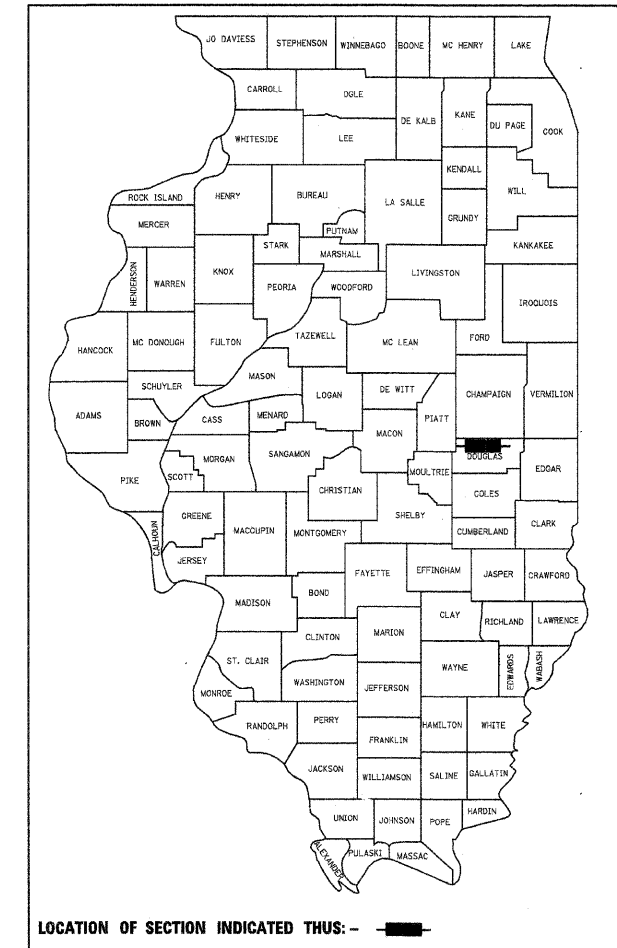


| ROUTE NO. | SECTION | COUNTY | TOTAL SHEETS | SHEET NO. |
|--------------------|----------------|----------|--------------|-----------|
| T.R. 56 | 09-05123-01-BR | DOUGLAS | 19 | 1 |
| GARRETT ROAD DIST. | | ILLINOIS | | |

CONTRACT NO. 91433

STATE OF ILLINOIS
DEPARTMENT OF TRANSPORTATION
DIVISION OF HIGHWAYS
**PLANS FOR PROPOSED
HIGHWAY BRIDGE PROGRAM**

SECTION 09-05123-01-BR
DOUGLAS COUNTY
GARRETT ROAD DISTRICT
PROJECT NO. BROS-0041(098)
T.R. 56
C-95-323-10



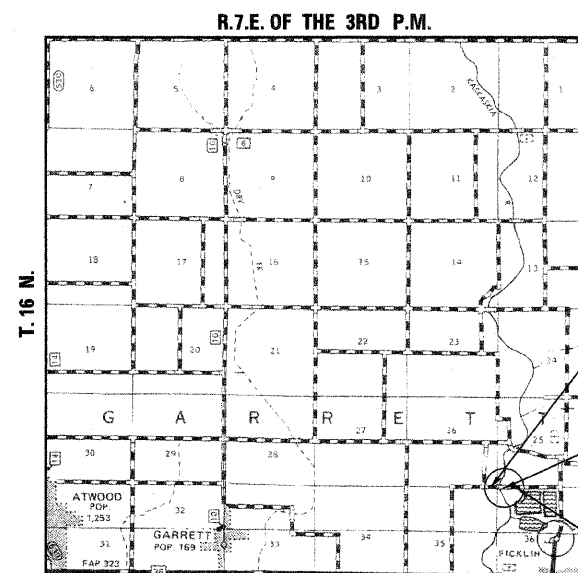
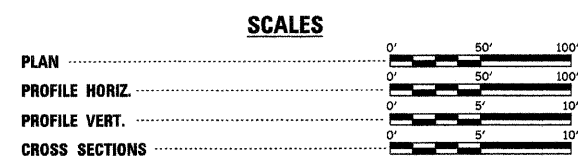
CLASSIFICATION: LOCAL ROAD (NON-URBAN)
DESIGN VOLUME: UNDER 250 ADT
CURRENT ADT: 116 (2011)
DESIGN SPEED: 30 MPH

TOLL FREE JOINT UTILITY LOCATING
INFORMATION FOR EXCAVATORS (J.U.L.I.E.)
TELEPHONE NUMBER 1-800-892-0123

| | | |
|--|-------------------|--|
| PASSED | <u>1/5</u> | 20 <u>11</u> |
| | <i>Ed J. ...</i> | ROAD DISTRICT COMMISSIONER |
| APPROVED | <u>1/5</u> | 20 <u>11</u> |
| | <i>J. ...</i> | COUNTY ENGINEER |
| PASSED | <u>2/3</u> | 20 <u>11</u> |
| | <i>D. ...</i> | DISTRICT FIVE ENGINEER OF LOCAL ROADS & STREETS |
| RELEASED FOR BID BASED ON LIMITED REVIEW | <u>February 3</u> | 20 <u>11</u> |
| | <i>J. ...</i> | DEPUTY DIRECTOR OF HIGHWAYS, REGION THREE ENGINEER |
| | | STATE OF ILLINOIS DEPARTMENT OF TRANSPORTATION |

| SHEET NO. | TITLE |
|-----------|---|
| 1. | COVER SHEET |
| 2. | SUMMARY OF QUANTITIES, GENERAL NOTES & TYPICAL SECTIONS |
| 3. | PLAN AND PROFILE SHEET |
| 4.-13 | BRIDGE PLANS |
| 14.-19. | STATION CROSS SECTIONS |

| STANDARDS | |
|-----------|---|
| 000001-06 | STANDARD SYMBOLS, ABBREVIATIONS AND PATTERNS |
| 280001-05 | TEMPORARY EROSION CONTROL SYSTEMS |
| 515001-03 | NAME PLATE FOR BRIDGES |
| 635006-03 | REFLECTOR AND TERMINAL MARKER PLACEMENT |
| 701901-01 | TRAFFIC CONTROL DEVICES |
| BLR 21-8 | TYPICAL APPLICATION OF TRAFFIC CONTROL DEVICES FOR CONSTRUCTION ON RURAL LOCAL HIGHWAYS |



LOCATION PLAN
GROSS LENGTH OF SECTION = 750.00 FEET = 0.142 MILES
NET LENGTH OF SECTION = 750.00 FEET = 0.142 MILES

SCALE IN MILES

IMPROVEMENT BEGINS
STA. 11+00

STA. 14+90.00 - PRECAST PRESTRESSED CONCRETE DECK BEAM BRIDGE (21" DEPTH), THREE SPANS @ 50'-0", 58'-0", 50'-0"; 159'-6" BK. TO BK. ABUTS.; 27'-0" ROADWAY; NO SKEW EXISTING S.N. 021-4012 PROPOSED S.N. 021-4307

IMPROVEMENT ENDS
STA. 18+50



Gary J. Cartwright 12-29-10
ILLINOIS PROFESSIONAL NO. 43408
EXPIRES 11-30-11

4440 ASH GROVE
SPRINGFIELD, IL 62711
(217) 793-8600
www.fehr-graham.com

FEHR-GRAHAM & ASSOCIATES, LLC
ENGINEERING AND SCIENCE CONSULTANTS
FREEMONT, IL ROCKFORD, IL ROCKFORD, IL MONMOUTH, IL SPRINGFIELD, IL