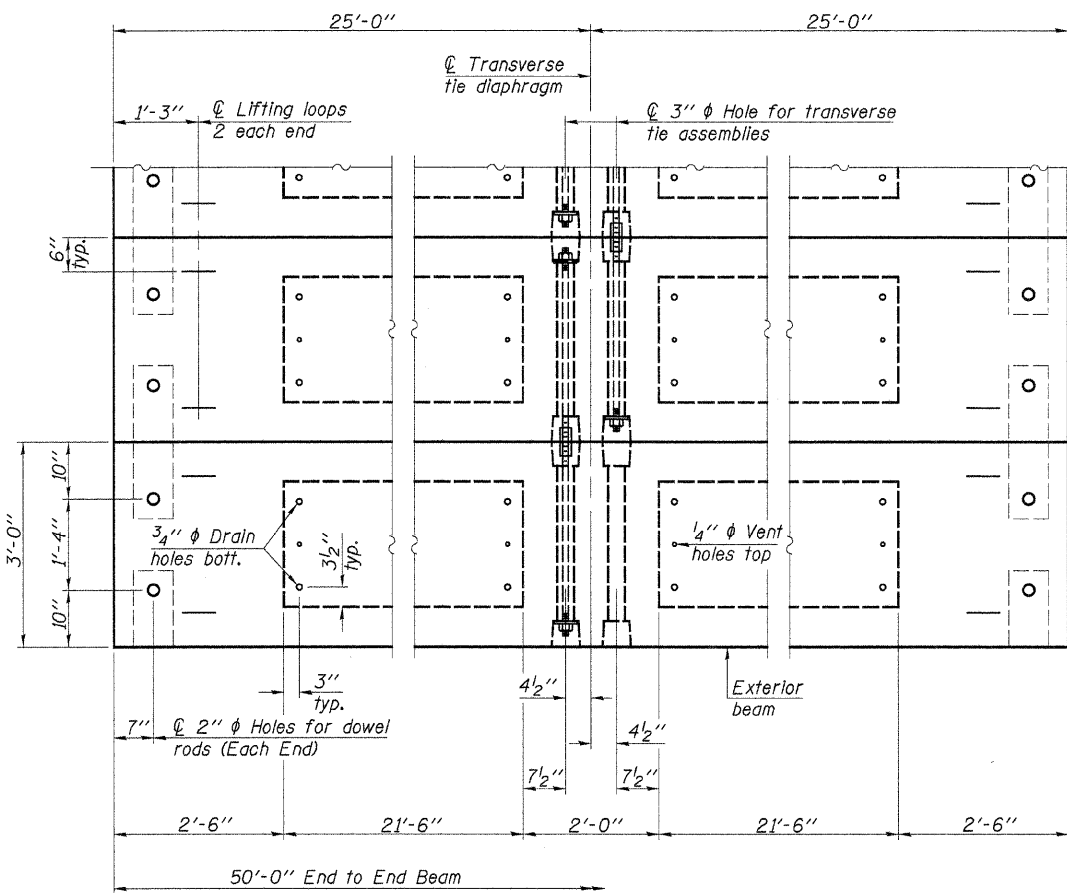
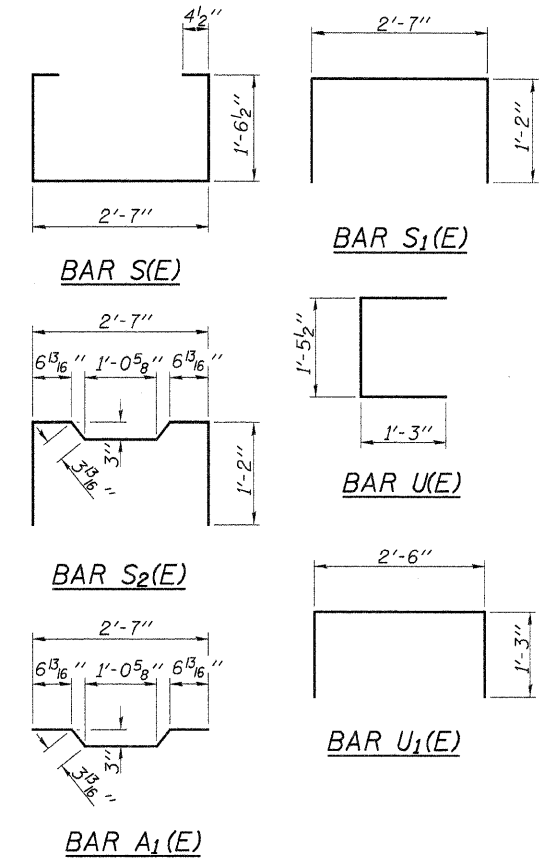
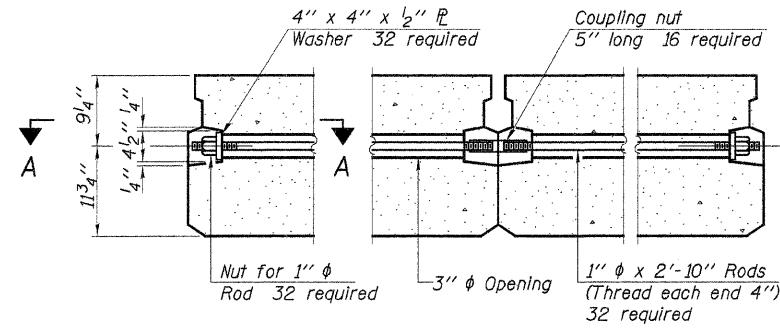
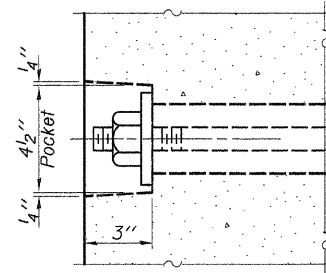


Note: All bearing pads shall be 1" thick.

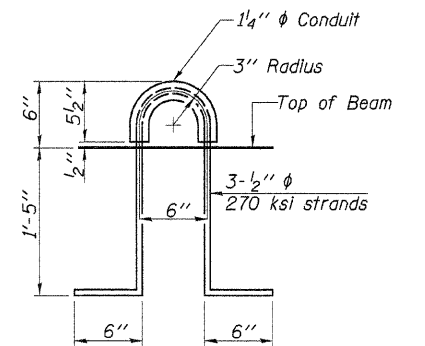
FIXED



Note: Connect beams in pairs with the transverse tie configuration shown.

NOTES

- Prestressing steel shall be uncoated high strength, low relaxation 7-wire strand, Grade 270. The nominal diameter shall be 1/2" and the nominal cross-sectional area shall be 0.153 sq. in.
- The 1" rods in the transverse tie assembly shall be tightened to a snug fit and the threads set. Pockets on exterior faces of bridge shall be filled with grout after transverse tie assembly is in place.
- Reinforcement bars shall conform to ASTM A 706, Grade 60.
- Two 1/8" fabric adjusting shims of the dimensions of the exterior bearing pad shall be provided for each bearing pad location. (96 Required)
- A minimum 2 1/2" diameter lifting pin shall be used to engage the lifting loops during handling.
- Corrosion inhibitor, per Article 1020.05(b)(12) and 1021.06 of the Standard Specifications, shall be used in the concrete for precast prestressed concrete deck beams.
- Compressive strength of prestressed concrete, f'c, shall be 6000 psi.
- Compressive strength of prestressed concrete at release, f'cl, shall be 5000 psi.
- Rail post inserts, specified elsewhere, shall be cast into the exterior face of the outside beams. See Special Provisions for review and distribution of shop drawings.



BILL OF MATERIAL - SPANS 1 & 3

Precast Prestressed Conc. Deck Bms. (21" depth)	Sq. Ft.	2,700
Estimated Total Weight (One Beam) = 30,500 Pounds		

**21" X 36" PPC DECK BEAM DETAILS
SPANS 1 & 3
S.N. 021-4307**

DESIGNED -	A.L.S.
CHECKED -	A.R.K.
DRAWN -	S.A.P.
CHECKED -	A.L.S. & A.R.K.

PDB-2136-0D 03-12-10

FEHR-GRAHAM & ASSOCIATES, LLC ENGINEERING AND SCIENCE CONSULTANTS FREEPORT, IL ROCKFORD, IL ROCHELLE, IL MONROE, WI SPRINGFIELD, IL	TWP. RTE.	SECTION	COUNTY	TOTAL SHEETS	SHEET NO.
	56	09-05123-01-BR	DOUGLAS	19	7
4440 ASH GROVE SPRINGFIELD, IL 62711 (217)-793-9600 www.fehr-graham.com			CONTRACT NO. 91433		
GARRETT ROAD DIST. ILLINOIS					