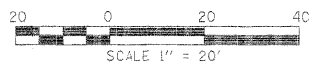


ROUTE NO.	DISTRICT	COUNTY	SHEET NO.	TOTAL SHEETS
FAS 1523	*	Champaign	38	5

*09-00956-00-BR



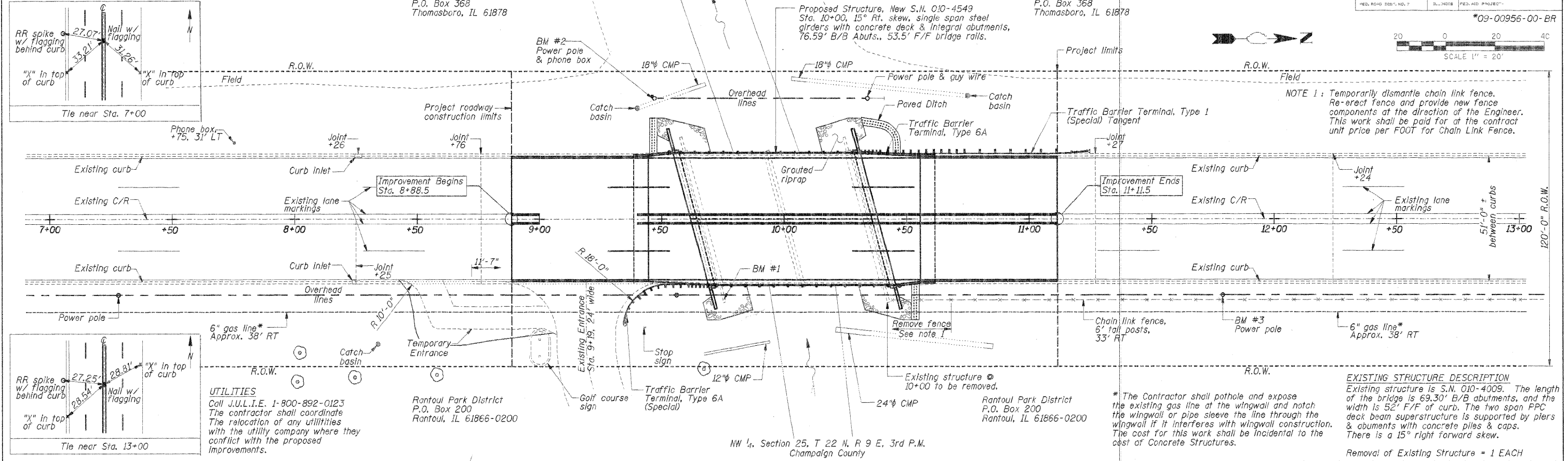
BM #1 - Chiseled "□" in top of SE wingwall, Elev. 100.04
 BM #2 - Spike in power pole at STA 9+47, 49' LT., Elev. 97.11
 BM #3 - Spike in power pole at STA 11+79, 31' RT., Elev. 100.57

Schuler Homes
 P.O. Box 368
 Thomasboro, IL 61878

Schuler Homes
 P.O. Box 368
 Thomasboro, IL 61878

NE 1/4, Section 26, T 22 N, R 9 E, 3rd P.M.
 Champaign County

NW 1/4, Section 25, T 22 N, R 9 E, 3rd P.M.
 Champaign County



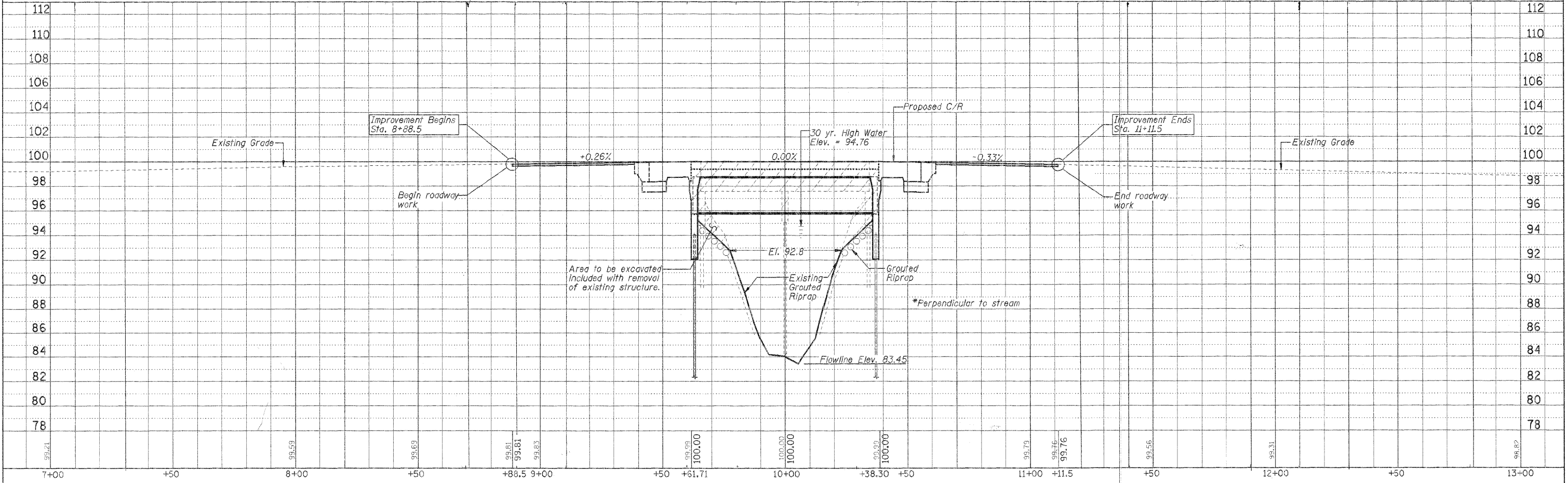
NOTE 1: Temporarily dismantle chain link fence. Re-erect fence and provide new fence components at the direction of the Engineer. This work shall be paid for at the contract unit price per FOOT for Chain Link Fence.

UTILITIES
 Call J.U.L.I.E. 1-800-892-0123
 The contractor shall coordinate the relocation of any utilities with the utility company where they conflict with the proposed improvements.

Rantoul Park District
 P.O. Box 200
 Rantoul, IL 61866-0200

Rantoul Park District
 P.O. Box 200
 Rantoul, IL 61866-0200

EXISTING STRUCTURE DESCRIPTION
 Existing structure is S.N. 010-4009. The length of the bridge is 69.30' B/B abutments, and the width is 52' F/F of curb. The two span PPC deck beam superstructure is supported by piers & abutments with concrete piles & caps. There is a 15° right forward skew.
 Removal of Existing Structure = 1 EACH



DATE: _____
 SURVEYED: _____
 ALIGNED: _____
 CHECKED: _____
 DRAWN: _____
 NO. _____

DATE: _____
 SURVEYED: _____
 ALIGNED: _____
 CHECKED: _____
 DRAWN: _____
 NO. _____

FRAUENHOFER & ASSOCIATES
 A Division of Engineering Resources Associates, Inc.
 Consulting Engineers, Scientists, & Surveyors

PLAN & PROFILE STA. 7+00 TO STA. 13+00