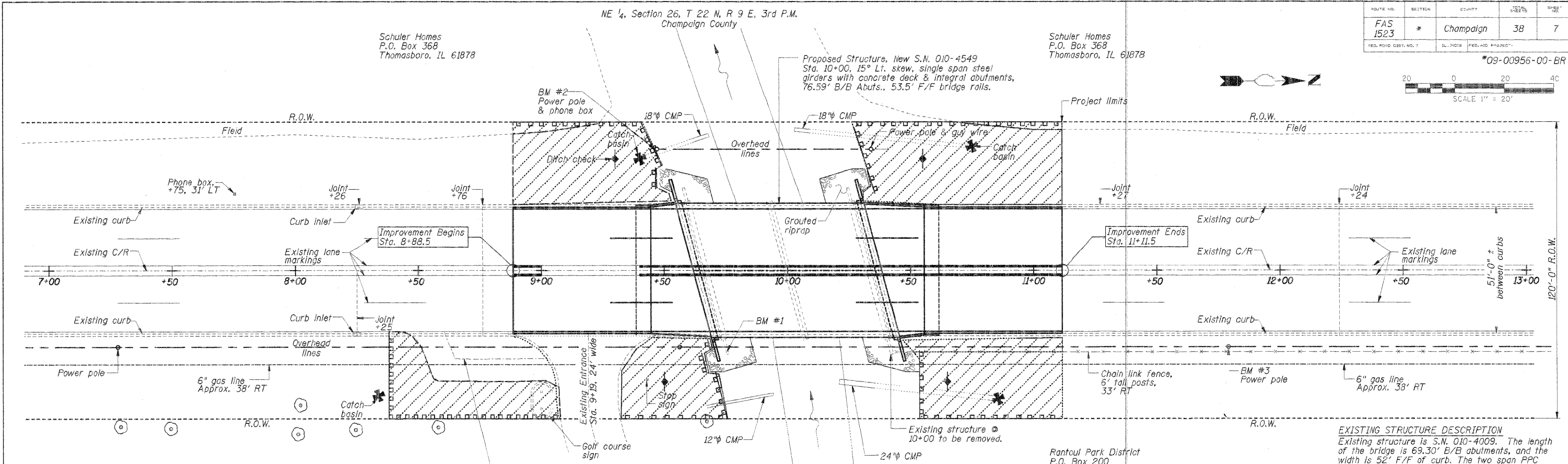
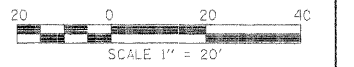


ROUTE NO.	SECTION	COUNTY	SHEET NO.	TOTAL SHEETS
FAS 1523	*	Champaign	38	7
FED. ROAD DIST. NO. 7		ILL. DIST. NO.	FED. AID PROJECT NO.	

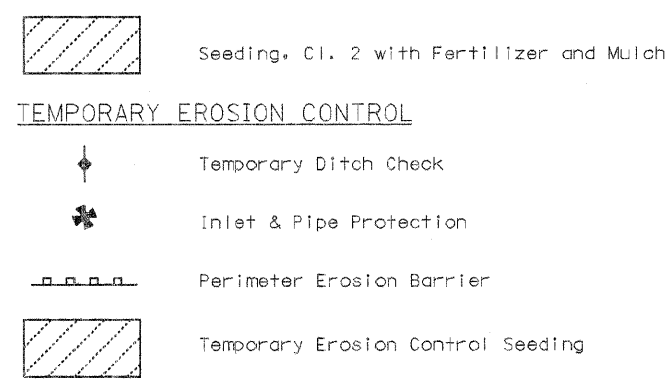
*09-00956-00-BR



EROSION CONTROL SEQUENCE

1. Placement of perimeter erosion control barrier prior to commencement of any work. See Standard 280001.
2. Construct a temporary entrance.
3. Removal of the existing structure & pavement removal.
4. Earth excavation, structure excavation, & asphalt surface removal.
5. Construction of the substructure.
6. Placement of steel and concrete deck & concrete approach pavements.
7. Place grouted riprap.
8. Placement of bituminous surface, coarse.
9. Install guardrail and bridge rail.
10. Removal and proper clean up of the temporary erosion controls.
11. Placement of the permanent erosion controls.

PERMANENT EROSION CONTROL



25000400, 25000500, 25000600

NITROGEN FERTILIZER NUTRIENT; POTASSIUM FERTILIZER NUTRIENT; PHOSPHORUS FERTILIZER NUTRIENT

LOCATION	POUND
STA. 8+38.00 TO STA. 9+61.71 RT	15
STA. 8+88.50 TO STA. 9+61.71 LT	10
STA. 10+38.30 TO STA. 11+11.50 LT/RT	15
(110 LBS/ACRE) TOTAL 40	

25000200, 25100115

SEEDING CLASS 2; MULCH METHOD 2

LOCATION	ACRE
STA. 8+38.00 TO STA. 9+61.71 RT	0.10
STA. 8+88.50 TO STA. 9+61.71 LT	0.05
STA. 10+38.30 TO STA. 11+11.50 LT/RT	0.12
TOTAL 0.27	

28000305

TEMPORARY DITCH CHECKS

LOCATION	FOOT
STA. 9+30 LT	10
STA. 9+50 RT	10
STA. 10+55 LT	10
STA. 10+65 RT	10
TOTAL 40	

4020100

AGGREGATE FOR TEMPORARY ACCESS

LOCATION	TONS
TEMPORARY ENTRANCE @ STA. 8+60.50 RT	100
TOTAL 100	

28000400

PERIMETER EROSION BARRIER

LOCATION	FOOT
STA. 8+88.50 TO STA. 9+54.40 LT	100
STA. 8+38.00 TO STA. 9+12.00 RT	120
STA. 9+32.00 TO STA. 9+77.80 RT	90
STA. 10+22.71 TO STA. 11+11.50 LT	135
STA. 10+45.60 TO STA. 11+11.50 LT	100
TOTAL 545	

21101615

TOP SOIL FURNISH & PLACE, 4"

LOCATION	SO. YD
STA. 8+38.00 TO STA. 9+61.71 RT	469
STA. 8+88.50 TO STA. 9+61.71 LT	223
STA. 10+38.30 TO STA. 11+11.50 LT/RT	573
TOTAL 1265	

28000250

TEMPORARY EROSION CONTROL SEEDING

LOCATION	POUND
STA. 8+38.00 TO STA. 9+61.71 RT	10
STA. 8+88.50 TO STA. 9+61.71 LT	5
STA. 10+38.30 TO STA. 11+11.50 LT/RT	15
(100 LBS/ACRE) TOTAL 30	

EXISTING STRUCTURE DESCRIPTION
 Existing structure is S.N. 010-4009. The length of the bridge is 69.30' B/B abutments, and the width is 52' F/F of curb. The two span PPC deck beam superstructure is supported by piers & abutments with concrete piles & caps. There is a 15° right forward skew.
 Removal of Existing Structure = 1 EACH

NOTE: Turf and topsoil removal and disposal shall be incidental to Removal of Existing Structures.

BILL OF MATERIAL - EROSION CONTROL

ITEM	UNIT	QUANTITY
Top Soil Furnish & Place, 4"	SO. YD.	1265
Seeding, Class 2	ACRE	0.27
Nitrogen Fertilizer Nutrient	POUND	40
Phosphorus Fertilizer Nutrient	POUND	40
Potassium Fertilizer Nutrient	POUND	40
Mulch, Method 2	ACRE	0.27
Temporary Erosion Control Seeding	POUND	30
Temporary Ditch Checks	EACH	40
Perimeter Erosion Barrier	FOOT	545
Inlet & Pipe Protection	EACH	4
Aggregate for Temporary Access	TONS	100