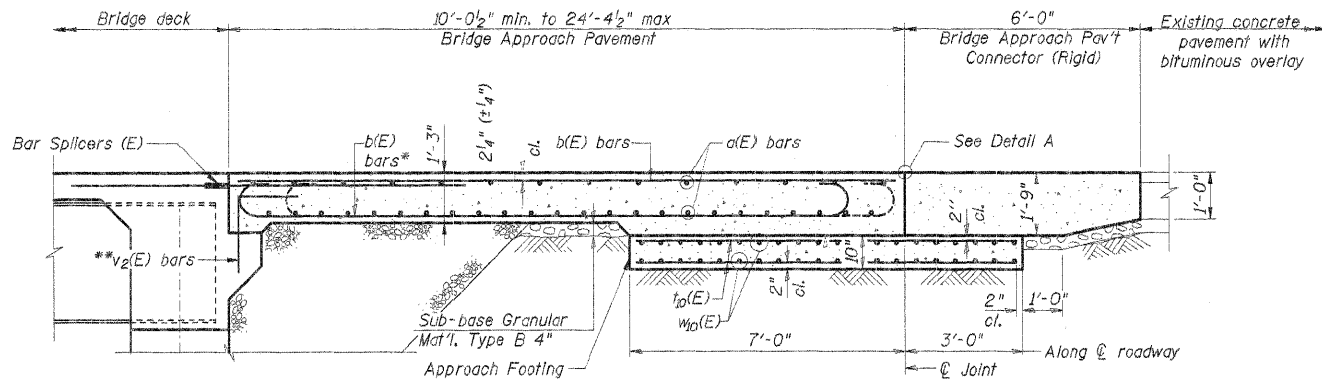
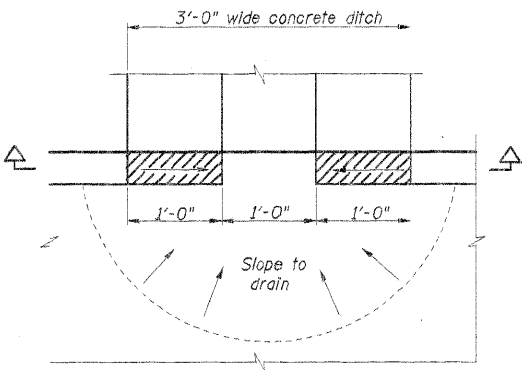


Contract No. 91452

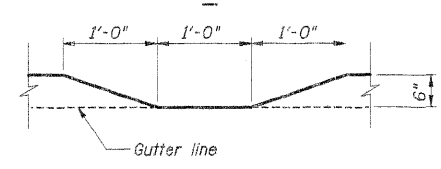


SECTION A3-A3

Bar splicers are billed with Superstructure.
 * Tilt hooked #9 b(E) bars as required to maintain clearance.
 ** v2(E) are billed with Superstructure.
 *** Cost included with Concrete Superstructure.



CURB CUT-OUT DETAIL



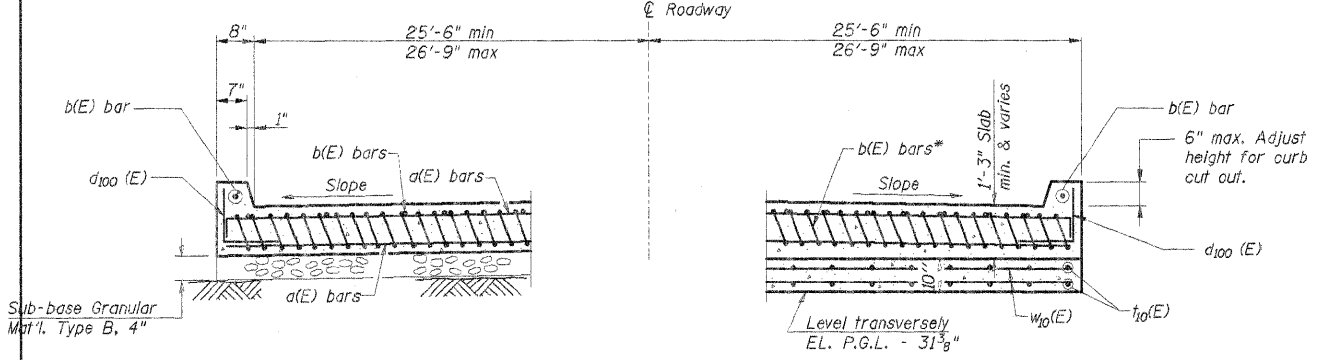
CURB CUT-OUT SECTION

REINFORCING LIST (PART 1)
NORTH BRIDGE
APPROACH PAVEMENT

Bar	No.	Size	Length	Shape
a1 (E)	47	# 5	28'-8"	—
a2 (E)	4	# 5	29'-6"	—
a12 (E)	1	# 5	27'-2"	—
a13 (E)	1	# 5	25'-0"	—
a14 (E)	1	# 5	22'-9"	—
a15 (E)	1	# 5	20'-7"	—
a16 (E)	1	# 5	18'-5"	—
a17 (E)	1	# 5	16'-3"	—
a18 (E)	1	# 5	14'-1"	—
a19 (E)	1	# 5	11'-11"	—
a20 (E)	1	# 5	9'-9"	—
a21 (E)	1	# 5	7'-7"	—
a22 (E)	1	# 5	5'-4"	—
a23 (E)	1	# 5	26'-3"	—
a24 (E)	1	# 5	24'-1"	—
a25 (E)	1	# 5	21'-11"	—
a26 (E)	1	# 5	19'-10"	—
a27 (E)	1	# 5	17'-8"	—
a28 (E)	1	# 5	15'-6"	—
a29 (E)	1	# 5	13'-4"	—
a30 (E)	1	# 5	11'-3"	—
a31 (E)	1	# 5	9'-1"	—
a32 (E)	1	# 5	6'-11"	—
a33 (E)	1	# 5	4'-9"	—
a100 (E)	21	# 5	29'-2"	—
a101 (E)	1	# 5	4'-11"	—
a102 (E)	1	# 5	9'-6"	—
a103 (E)	1	# 5	14'-3"	—
a104 (E)	1	# 5	18'-9"	—
a105 (E)	1	# 5	23'-3"	—
a106 (E)	1	# 5	27'-11"	—
a116 (E)	1	# 5	7'-10"	—
a117 (E)	1	# 5	12'-6"	—
a118 (E)	1	# 5	17'-2"	—
a119 (E)	1	# 5	21'-10"	—
a120 (E)	1	# 5	26'-6"	—
b31 (E)	20	# 9	12'-0"	—
b32 (E)	20	# 9	14'-3"	—
b33 (E)	20	# 9	16'-6"	—
b34 (E)	20	# 9	18'-8"	—
b35 (E)	20	# 9	20'-11"	—
b36 (E)	20	# 9	23'-2"	—
b37 (E)	7	# 9	23'-10"	—
d100 (E)	30	# 5	2'-4"	—
t10 (E)	104	# 4	9'-8"	—
w10 (E)	80	# 5	28'-4"	—

REINFORCING LIST (PART 2)
NORTH BRIDGE
APPROACH PAVEMENT

Bar	No.	Size	Length	Shape
b50 (E)	2	# 5	10'-0"	—
b51 (E)	1	# 5	10'-4"	—
b52 (E)	1	# 5	10'-8"	—
b53 (E)	1	# 5	11'-0"	—
b54 (E)	1	# 5	11'-4"	—
b55 (E)	1	# 5	11'-8"	—
b56 (E)	1	# 5	12'-0"	—
b57 (E)	1	# 5	12'-4"	—
b58 (E)	1	# 5	12'-8"	—
b59 (E)	1	# 5	13'-0"	—
b60 (E)	1	# 5	13'-4"	—
b61 (E)	1	# 5	13'-8"	—
b62 (E)	1	# 5	14'-0"	—
b63 (E)	1	# 5	14'-4"	—
b64 (E)	1	# 5	14'-8"	—
b65 (E)	1	# 5	15'-0"	—
b66 (E)	1	# 5	15'-4"	—
b67 (E)	1	# 5	15'-8"	—
b68 (E)	1	# 5	16'-0"	—
b69 (E)	1	# 5	16'-4"	—
b70 (E)	1	# 5	16'-8"	—
b71 (E)	1	# 5	17'-0"	—
b72 (E)	1	# 5	17'-4"	—
b73 (E)	1	# 5	17'-8"	—
b74 (E)	1	# 5	18'-0"	—
b75 (E)	1	# 5	18'-4"	—
b76 (E)	1	# 5	18'-8"	—
b77 (E)	1	# 5	19'-0"	—
b78 (E)	1	# 5	19'-4"	—
b79 (E)	1	# 5	19'-8"	—
b80 (E)	1	# 5	20'-0"	—
b81 (E)	1	# 5	20'-4"	—
b82 (E)	1	# 5	20'-8"	—
b83 (E)	1	# 5	21'-0"	—
b84 (E)	1	# 5	21'-4"	—
b85 (E)	1	# 5	21'-8"	—
b86 (E)	1	# 5	22'-0"	—
b87 (E)	1	# 5	22'-4"	—
b88 (E)	1	# 5	22'-8"	—
b89 (E)	1	# 5	23'-0"	—
b90 (E)	2	# 5	23'-4"	—
b100 (E)	1	# 5	6'-6"	—
b102 (E)	1	# 5	8'-0"	—
b103 (E)	1	# 5	13'-0"	—

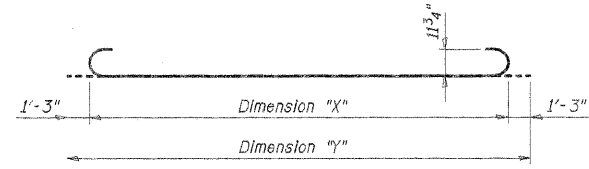


SECTION A4-A4

(See Plan for dimensions not shown)

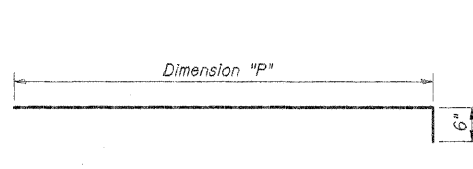
NEAR ABUTMENT

AT APPROACH FOOTING



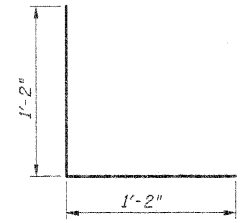
BAR b31 (E) thru b37 (E)

Bar	"X"	Length
b31 (E)	9'-6"	12'-0"
b32 (E)	11'-9"	14'-3"
b33 (E)	14'-0"	16'-6"
b34 (E)	16'-2"	18'-8"
b35 (E)	18'-5"	20'-11"
b36 (E)	20'-8"	23'-2"
b37 (E)	21'-4"	23'-10"

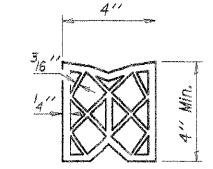


BAR a100 (E) thru a106 (E)

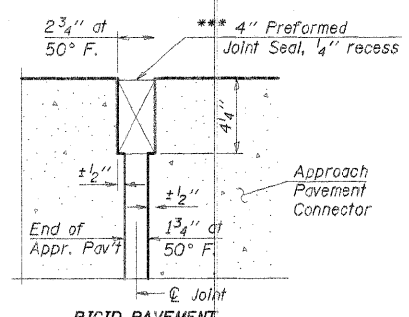
Bar	"P"	Length
a100 (E)	28'-8"	29'-2"
a101 (E)	4'-5"	4'-11"
a102 (E)	9'-0"	9'-6"
a103 (E)	13'-7"	14'-3"
a104 (E)	18'-3"	18'-9"
a105 (E)	22'-9"	23'-3"
a106 (E)	27'-5"	27'-11"



BAR d100 (E)



PREFORMED JOINT SEAL



RIGID PAVEMENT DETAIL A

*** Cost included with Concrete Superstructure.

BILL OF MATERIAL
SOUTH BRIDGE
APPROACH PAVEMENT

Reinforcement Bars, Epoxy Coated	Lbs.	14320
Concrete Superstructure	Cu. Yds.	52
Concrete Structures	Cu. Yds.	16.3
Bridge Deck Grooving	Sq. Yd.	100
Protective Coat	Sq. Yd.	105
Sub-base Granular Mat'l, Type B 4"	Sq. Yd.	18
Earth Excavation	Cu. Yd.	22

NOTES:
 Approach slab concrete shall be measured and paid for as Concrete Superstructures.
 Approach footing concrete shall be measured and paid for as Concrete Structures.
 Reinforcement bars designated (E) shall be epoxy coated.

The approach footing maximum applied service bearing pressure (Qmax) = 2.0 ksf.

DSGN	J. Hoffmann				
DR	E.A. Clark				
CHK	J.R. Wolf				
APVD	J.A. Fraunhoffer	NO.	DATE	REVISION	BY

FRAUNHOFER & ASSOCIATES
 A Division of Engineering Resource Associates, Inc.
 Consulting Engineers, Scientists, & Surveyors

3002 CROSSING COURT
 CHAMPAIGN, IL 61822
 PHONE (217) 351-6268
 FAX (217) 355-1802

NORTH BRIDGE APPROACH PAV'T (SHEET 2 OF 2)
 FAS 1523 (CH 55) OVER UPPER SALT FORK
 SEC 09-00956-00-BR
 CHAMPAIGN COUNTY

SHEET	11
DWG NO.	7052apcr.dgn
DATE	FEB 2011
PROJ NO.	7052