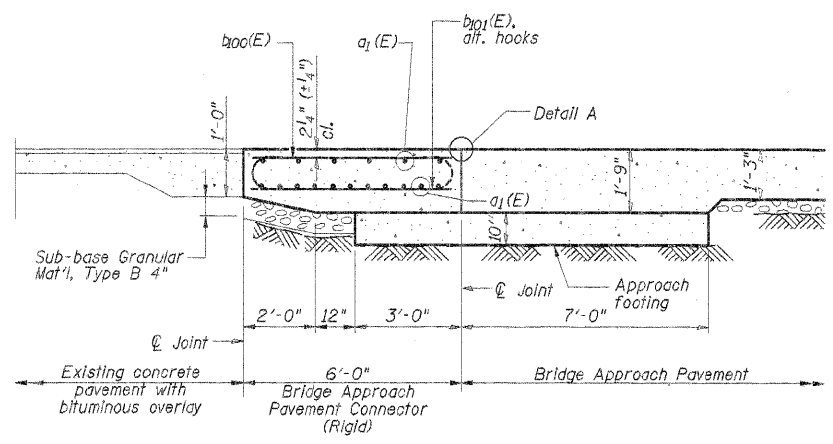
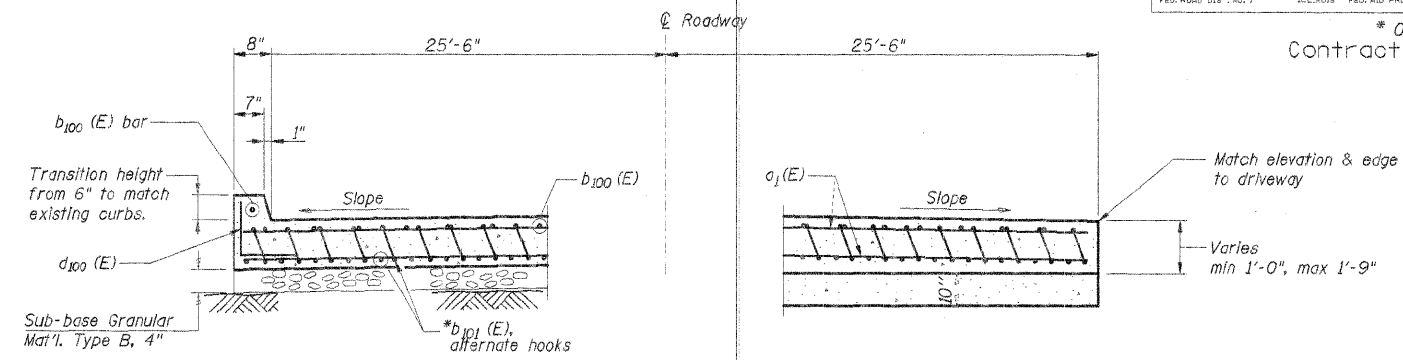


ROUTE NO.	SECTION	COUNTY	DIST. SHEET	SHEET NO.
FAS1523	*	CHAMPAIGN	38	12
FED. ROAD DIST. NO. 7		ILLINOIS FED. AID PROJECT		

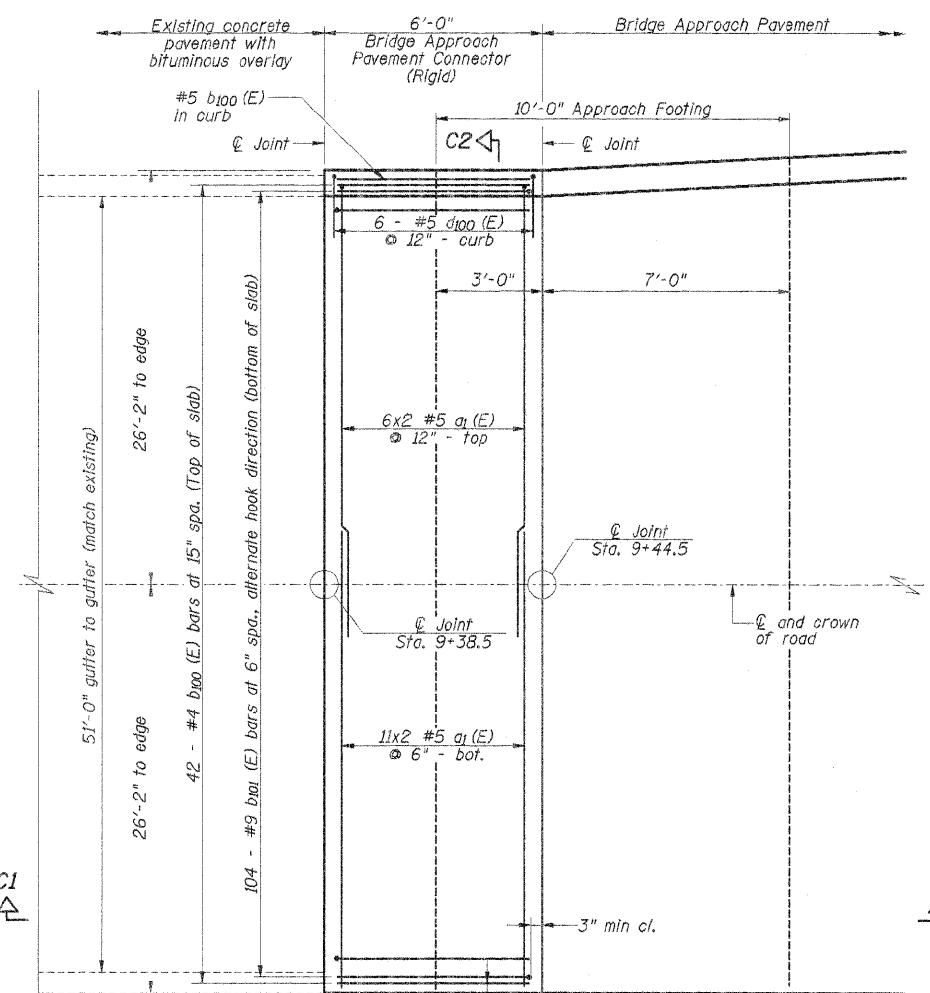
* 09-00956-00-BR
Contract No. 91452



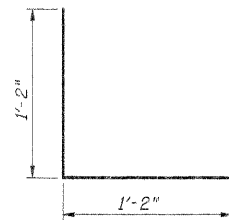
SECTION C1-C1



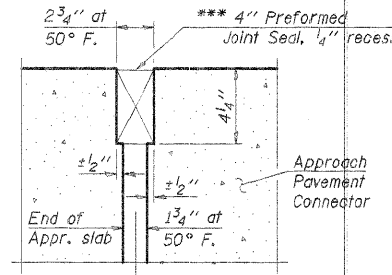
SECTION C2-C2



PLAN



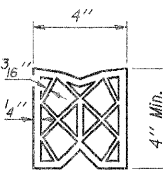
BAR d100(E)



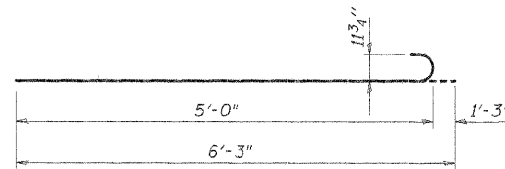
RIGID PAVEMENT

DETAIL A

*** Cost is incidental to Concrete Superstructure.



PREFORMED JOINT SEAL



BAR b101(E)

**BILL OF MATERIAL
SOUTH BRIDGE APPROACH
PAVEMENT CONNECTOR (RIGID)**

Bar	No.	Size	Length	Shape
a ₁ (E)	34	# 5	29'-0"	—
b ₁₀₀ (E)	43	# 4	5'-6"	—
b ₁₀₁ (E)	104	# 9	6'-3"	—
d ₁₀₀ (E)	6	# 5	2'-4"	┘
Reinforcement Bars, Epoxy Coated			Lbs.	3420
Concrete Superstructure			Cu. Yds.	21.5
Bridge Deck Grooving			Sq. Yds.	34
Protective Coat			Sq. Yds.	36
Sub-base Granular Mat'l Type B, 4"			Sq. Yds.	18

DSGN	J. Hoffmann				
DR	B.A. Clark				
CHK	J.R. Wolf				
APVD	J.A. Fraunhoffer	NO.	DATE	REVISION	BY

FRAUENHOFER & ASSOCIATES
A Division of Engineering Resource Associates, Inc.
Consulting Engineers, Scientists, & Surveyors

3002 CROSSING COURT
CHAMPAIGN, IL 61822
PHONE (217) 261-6268
FAX (217) 355-1902

S. BRIDGE APPROACH PAV'T CONNECTOR (RIGID)
FAS 1523 (CH 55) OVER UPPER SALT FORK
SEC 09-00956-00-BR
CHAMPAIGN COUNTY

SHEET	12
DWG NO.	7052apav.dgn
DATE	FEB 2011
PROJ NO.	7052