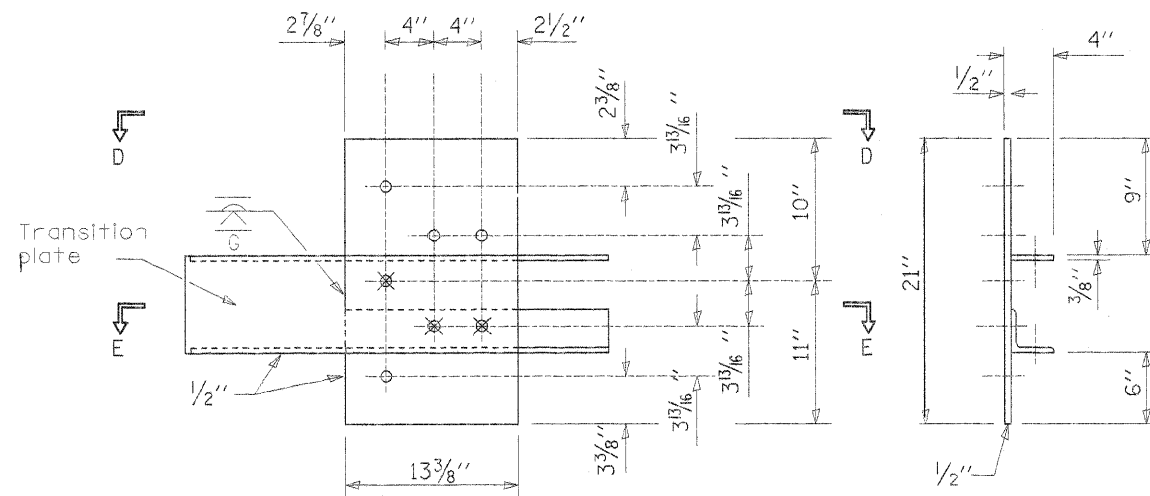


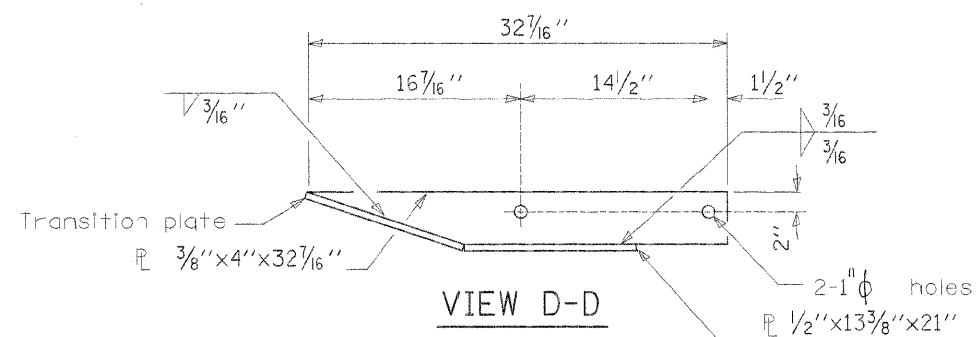
ROUTE NO.	SECTION	COUNTY	SHEET NO.	SHEET NO.
FAS1523	*	CHAMPAIGN	38	20
FED. ROAD DIST. NO. 7	ILL. DIST. NO.	FED. AID PROJECT-		

\* 09-00956-00-BR  
Contract No. 91452

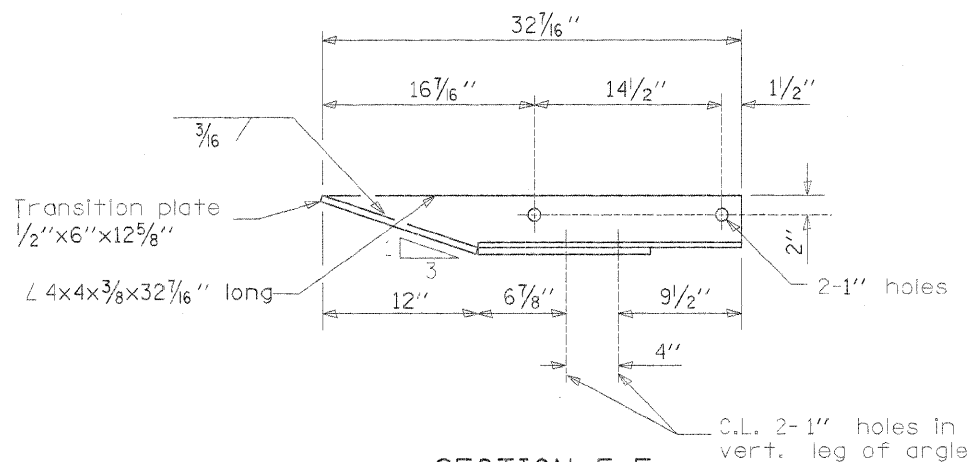


**GUARDRAIL CONNECTION PLATE ASSEMBLY DETAILS**

(Mirror for opposite end)



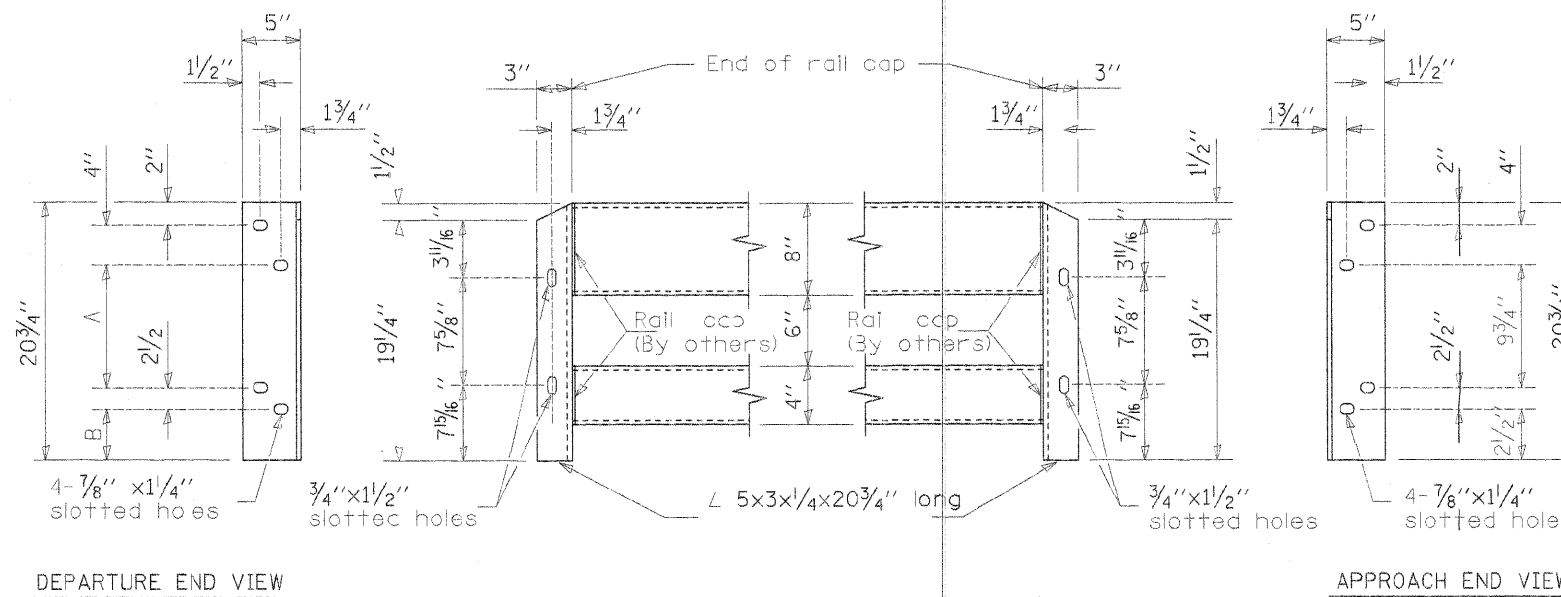
**VIEW D-D**



**SECTION E-E**

- C.L. 4-1" holes for 7/8" H.S. bolts and nuts
- ⊗ Drill and tap 3 holes for 7/8" H.S. bolts.

**LEGEND**



**CONNECTION ANGLES**

(Install angles to rail caps using 3/8" washers and self-locking nuts or nuts and jam nuts, to be provided by others.)

Sheet 3 of 5

DSGN	K.J. Hoffmann				
DR	K.J. Hoffmann				
CHK	J.R. Wolf				
APVD	J.A. Fraunhoffer	NO.	DATE	REVISION	BY

**FRAUNHOFER & ASSOCIATES**  
A Division of Engineering Resource Associates, Inc.  
Consulting Engineers, Scientists, & Surveyors

3002 CROSSING COURT  
CHAMPAIGN, IL 61822  
PHONE (217) 351-6268  
FAX (217) 355-1902

**TRAFFIC BARRIER TERMINAL TYPE 6A (SPECIAL)**

FAS 1523 (CH 55) OVER UPPER SALT FORK  
SEC 09-00956-00-BR  
CHAMPAIGN COUNTY

SHEET	20
DWG NO.	7052*6A.dgn
DATE	FEB 2011
PROJ NO.	7052