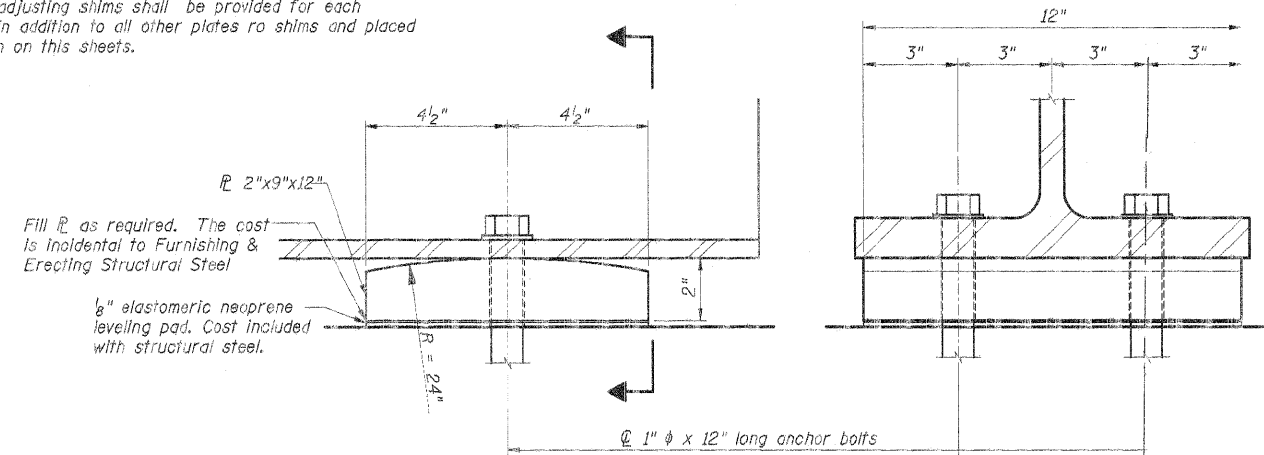


NOTES:
Reinforcing Bars and Concrete in diaphragm are billed with the Superstructure. See sheets 27 & 28.
Two $\frac{1}{8}$ " adjusting shims shall be provided for each bearing in addition to all other plates no shims and placed as shown on this sheets.

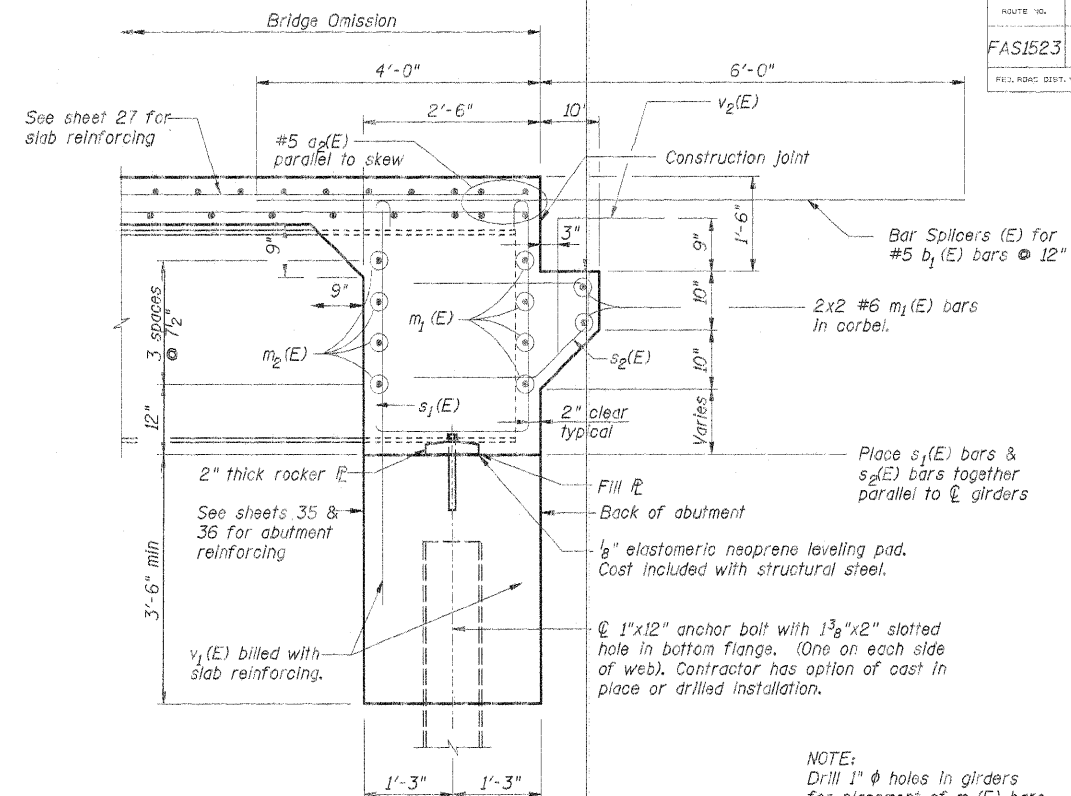


ELEVATION AT ABUTMENT

SECTION

ROCKER PLATE DETAIL

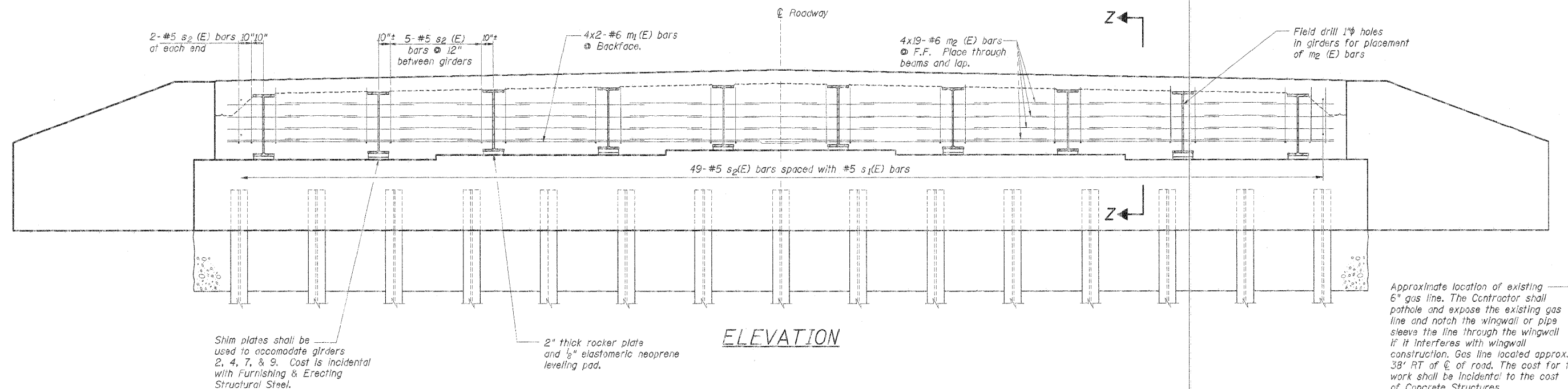
20 Plates and 40 bolts required
Cost is incidental to Furnishing & Erecting Structural Steel.



SECTION Z-Z

(Perpendicular to Q of abutment)

NOTE:
Drill 1" ϕ holes in girders for placement of m2(E) bars



ELEVATION

Approximate location of existing 6" gas line. The Contractor shall pothole and expose the existing gas line and notch the wingwall or pipe sleeve the line through the wingwall if it interferes with wingwall construction. Gas line located approx. 38' RT of Q of road. The cost for this work shall be incidental to the cost of Concrete Structures.

Work sheets 35, 36, & 37 together.

DSGN	K.J. Hoffmann				
DR	S.P. Pirin				
CHK	J.R. Wolf				
APVD	A. Fraenhoffer	NO.	DATE	REVISION	BY



FRAUENHOFER & ASSOCIATES
A division of Engineering Resource Associates, Inc.
Consulting Engineers, Scientists, & Surveyors

3002 CROSSING COURT
CHAMPAIGN, IL 61822
PHONE (217) 351-6268
FAX (217) 355-3002

ABUTMENT DETAILS (SHEET 3 OF 3)

FAS 1523 (CH 55) OVER UPPER SALT FORK
SEC 09-00956-00-BR
CHAMPAIGN COUNTY

SHEET	37
DWG NO.	7052ABT.dgn
DATE	FEB 2011
PROJ NO.	7052