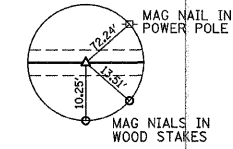
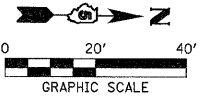


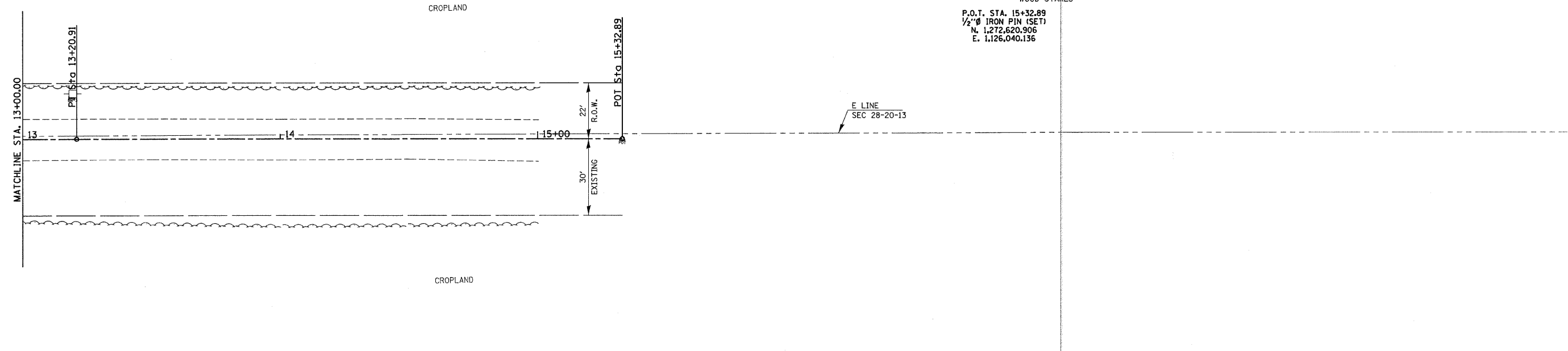
TRIMBLE TRUST  
S 1/2, SE 1/4, SEC 28, T. 20 N., R. 13 W., 2ND P.M.



P.O.T. STA. 15+32.89  
1/2" Ø IRON PIN (SET)  
N. 1,272,620.906  
E. 1,126,040.136

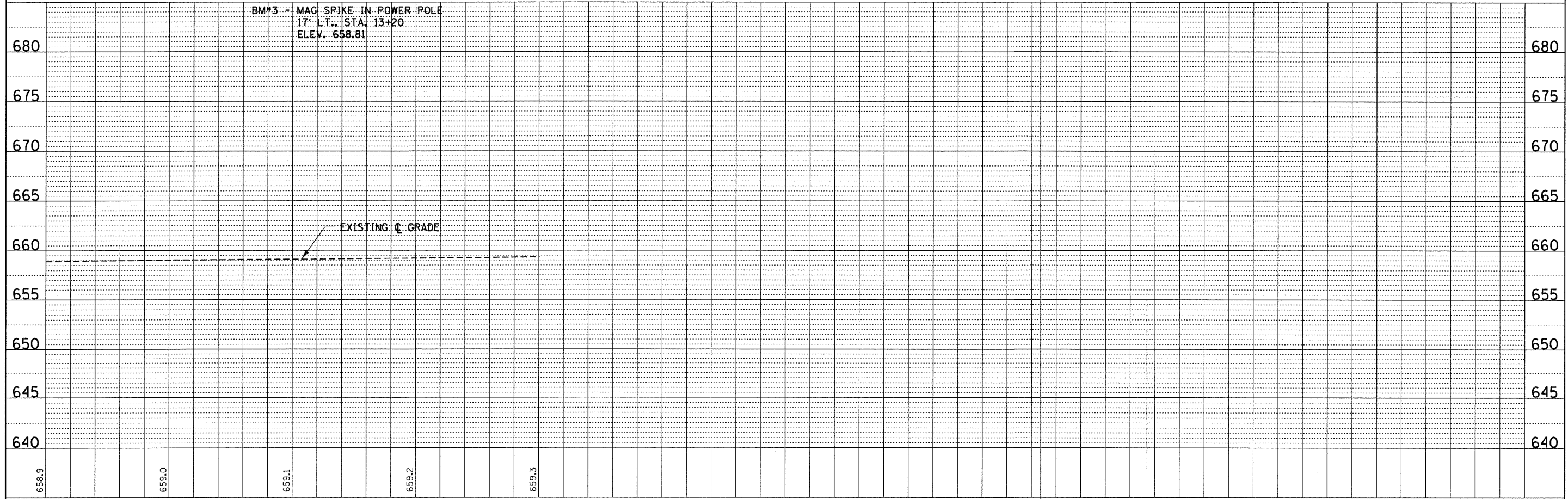


PLAN	SURVEYED	DATE
	PLOTTED	
	NOTE BOOK	
	NO.	
	BY	
	DATE	



MARK SHEPARD FARMS, INC.  
S 1/2, SEC 27, T. 20 N., R. 13 W., 2ND P.M.

PROFILE	SURVEYED	DATE
	PLOTTED	
	NOTE BOOK	
	NO.	
	BY	
	DATE	



FILE NAME = 180323-eh-r-pp3.dgn	USER NAME =	DESIGNED - J.W.F.	REVISED -	<b>STATE OF ILLINOIS VERMILION COUNTY HIGHWAY DEPARTMENT</b>	<b>PLAN &amp; PROFILE T.R. 78 / 600E ROAD</b>	T.R.	SECTION	COUNTY	TOTAL SHEETS	SHEET NO.
HAMPTON, LENZINI AND RENWICK, INC. 3085 STEVENSON DRIVE, SUITE 201 SPRINGFIELD, ILLINOIS 62769		DRAWN - D.T.M.	REVISED -			78	09-14138-00-BR	VERMILION	27	8
ILLINOIS PROFESSIONAL DESIGN FIRM LS / PE / SE CORP. 184.000899	PLOT SCALE =	CHECKED - S.W.M.	REVISED -			OAKWOOD ROAD DISTRICT		CONTRACT NO. 91458		
	PLOT DATE = 3/2/28:11	DATE - 11/23/10	REVISED -			SCALE: H20:V5	SHEET NO. 1 OF 4 SHEETS	STA. 4+72.99 TO STA. 7+00.00	ILLINOIS FED. AID PROJECT	