

F.A. RTE.	SECTION	COUNTY	TOTAL SHEETS	SHEET NO.
CH 7	05-00198-00-BR	MACON	29	1
		ILLINOIS	CONTRACT NO. 95513	

STATE OF ILLINOIS
DEPARTMENT OF TRANSPORTATION

PLANS FOR PROPOSED HIGHWAY BRIDGE PROGRAM

JOB # C-97-063-07

PROJECT # BRM-5169(38)

SECTION 05-00198-00-BR

FAU 7449 (CH 7) OVER FINLEY CREEK

MACON COUNTY

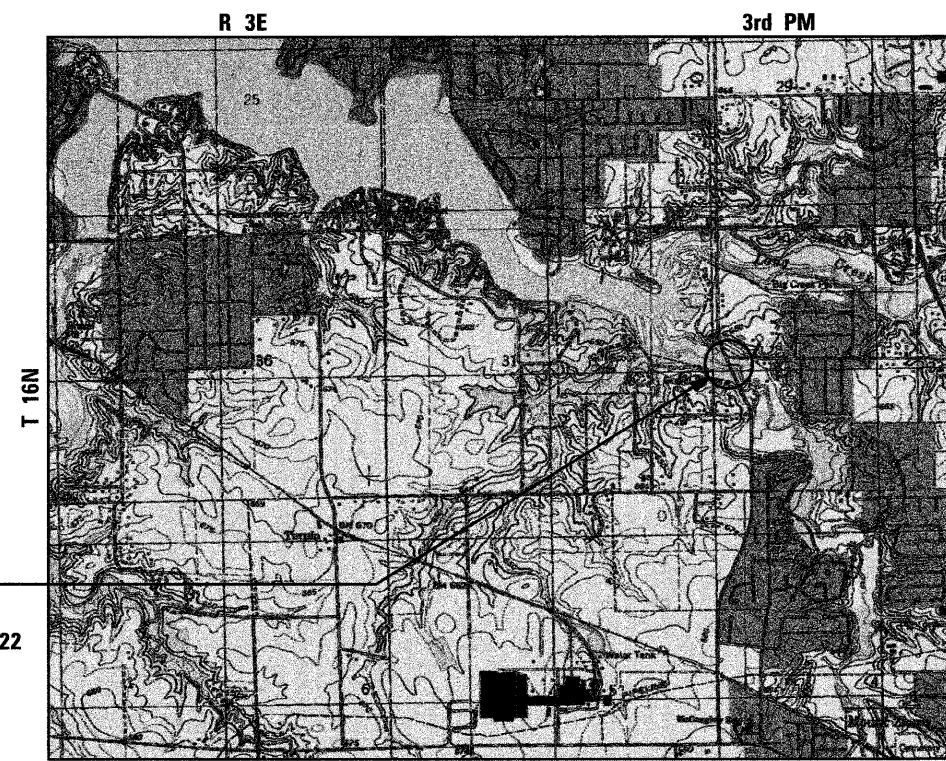
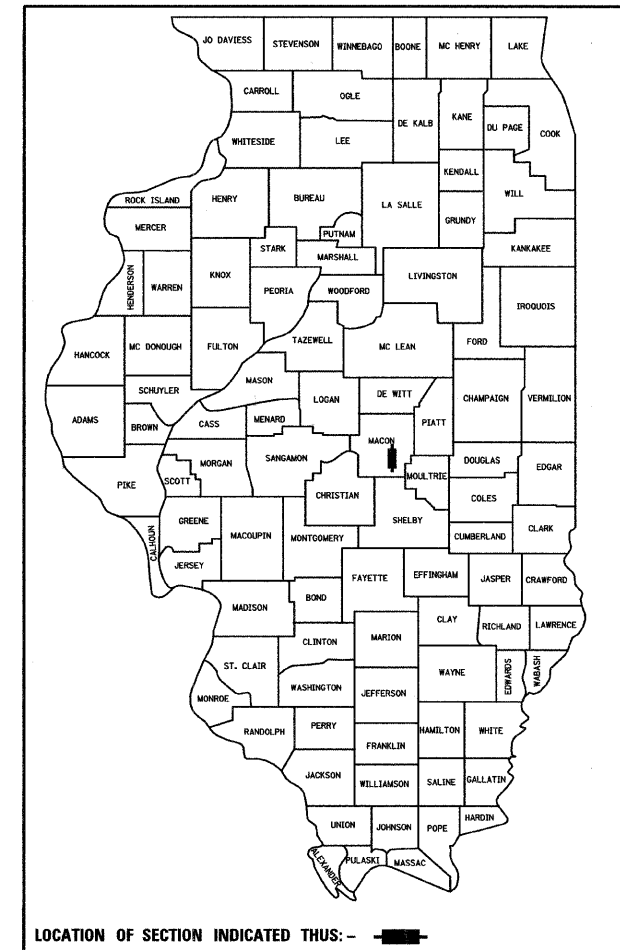
CONTRACT NO. 95513

INDEX OF SHEETS

- 1 COVER SHEET
- 2 GENERAL NOTES AND QUANTITIES
- 3 TYPICAL SECTIONS
- 4 PLAN AND PROFILE
- 5 GRADING PLAN
- 6 TEMPORARY TRAFFIC SIGNALS
- 7-18 BRIDGE PLANS
- 19-29 CROSS SECTIONS

STANDARDS

- 000001-06 STANDARD SYMBOLS, ABBREVIATIONS AND PATTERNS
- 280001-05 TEMPORARY EROSION CONTROL SYSTEMS
- 515001-03 NAME PLATE FOR BRIDGES
- 606001-04 CONCRETE CURB TYPE B AND COMBINATION CONCRETE CURB AND GUTTER
- 630201-06 PCCHMA STABILIZATION AT STEEL PLATE BEAM GUARD RAIL
- 630301-05 SHOULDER WIDENING FOR TYPE 1 (SPECIAL) GUARDRAIL TERMINALS
- 631011-07 TRAFFIC BARRIER TERMINAL, TYPE 2
- 631026-05 TRAFFIC BARRIER TERMINAL, TYPE 5
- 631031-09 TRAFFIC BARRIER TERMINAL, TYPE 6
- 635006-03 REFLECTOR AND TERMINAL MARKER PLACEMENT
- 701006-03 OFF-RD OPERATIONS, 2L, 2W, 15'(4.5m) TO 24'(600mm) FROM PAVEMENT EDGE
- 701301-04 LANE CLOSURE, 2L, 2W SHORT TIME OPERATIONS
- 701701-07 URBAN LANE CLOSURE, MULTILANE INTERSECTION
- 701901-01 TRAFFIC CONTROL DEVICES
- 780001-02 TYPICAL PAVEMENT MARKINGS
- 857001-01 STANDARD PHASE DESIGNATION DIAGRAMS AND PHASE SEQUENCES
- 880001-01 SPAN WIRE MOUNTED SIGNALS AND FLASHING BEACON INSTALLATION
- BLR 21-8 TYPICAL APPLICATION OF TRAFFIC CONTROL DEVICES FOR CONSTRUCTION ON RURAL HIGHWAYS



T 16N

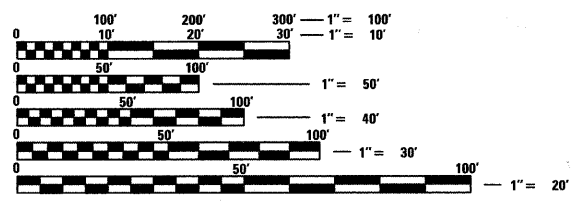


FUNCTIONAL CLASSIFICATION - MINOR ARTERIAL (URBAN)
2011 ADT = 6800
2031 ADT = 8500
DESIGN SPEED = 45 MPH

APPROVED April 19 2011
Ernie Bird
COUNTY ENGINEER

PASSED April 25 2011
Maurice Kostel
DISTRICT SEVEN ENGINEER OF LOCAL ROADS AND STREETS

Releasing For Bid Based on Limited Review April 25 2011
Royce L. Dushell
DEPUTY DIRECTOR OF HIGHWAYS
REGION FOUR ENGINEER
STATE OF ILLINOIS
DEPARTMENT OF TRANSPORTATION



FULL SIZE PLANS HAVE BEEN PREPARED USING STANDARD ENGINEERING SCALES. REDUCED SIZED PLANS WILL NOT CONFORM TO STANDARD SCALES. IN MAKING MEASUREMENTS ON REDUCED PLANS, THE ABOVE SCALES MAY BE USED.

J.U.L.I.E.
JOINT UTILITY LOCATION INFORMATION FOR EXCAVATION
1-800-892-0123

HLC PROJECT NO. 5127
HLC FIELD BOOK NO. 479

PROPOSED SECTION 05-00198-00-BR
BEGINS STATION 24+05.22
ENDS STATION 28+00
PROPOSED SN 058-3388
EXISTING SN 058-3194

LOCATION MAP

TOTAL LENGTH 394.78 FEET = 0.075 MILES
NET LENGTH 394.78 FEET = 0.075 MILES

THE PROPOSED IMPROVEMENT CONSISTS OF REMOVAL OF EXISTING STRUCTURE AND REPLACEMENT WITH A THREE SPAN PRECAST PRESTRESSED CONCRETE DECK BEAM (17" DEPTH) BRIDGE, PILE BENT PIERS AND ABUTMENTS, 30'-0" CLEAR ROADWAY AND 121'-5 1/2" BACK TO BACK ABUTMENTS, 30 DEGREE SKEW, AND OTHER MINOR COLLATERAL WORK.



Patrick P. Wilson
4/19/11
expires 11/30/11

HOMER L. CHASTAIN & ASSOCIATES, LLP
CONSULTING ENGINEERS
DECATUR (817) 422-8544
CHICAGO (773) 714-0050
ROCKFORD (815) 489-0050
184-001397