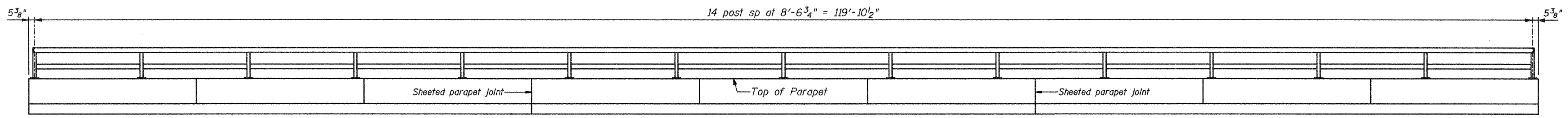
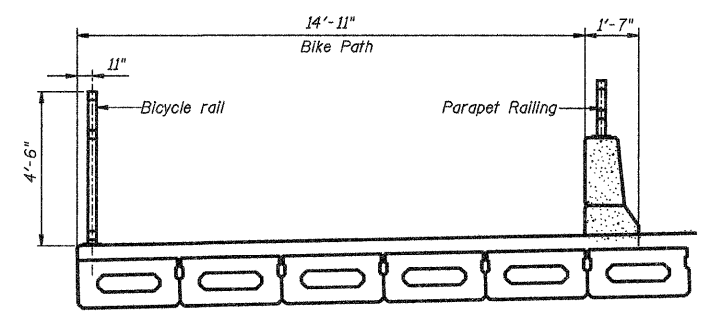
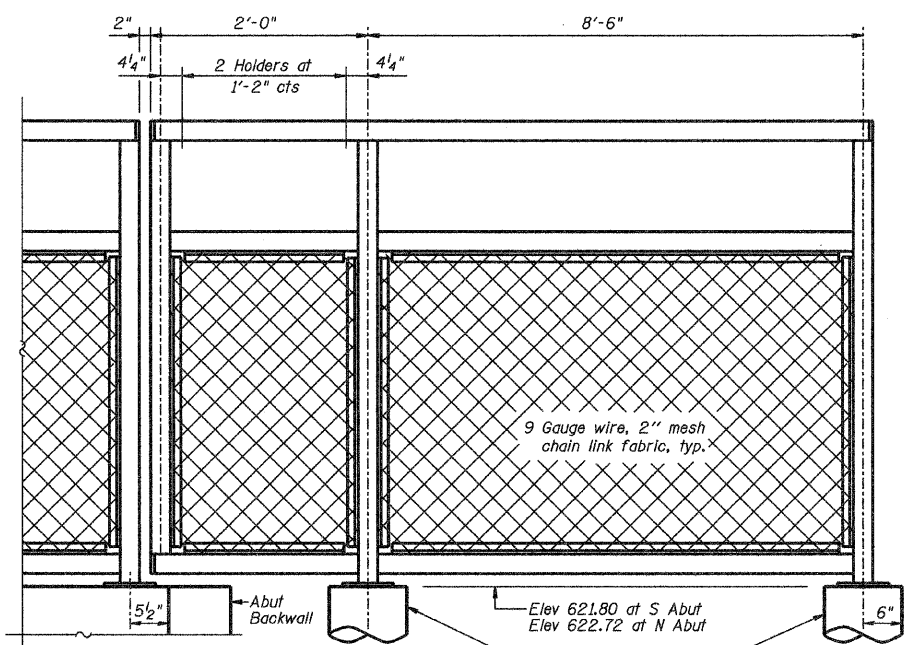
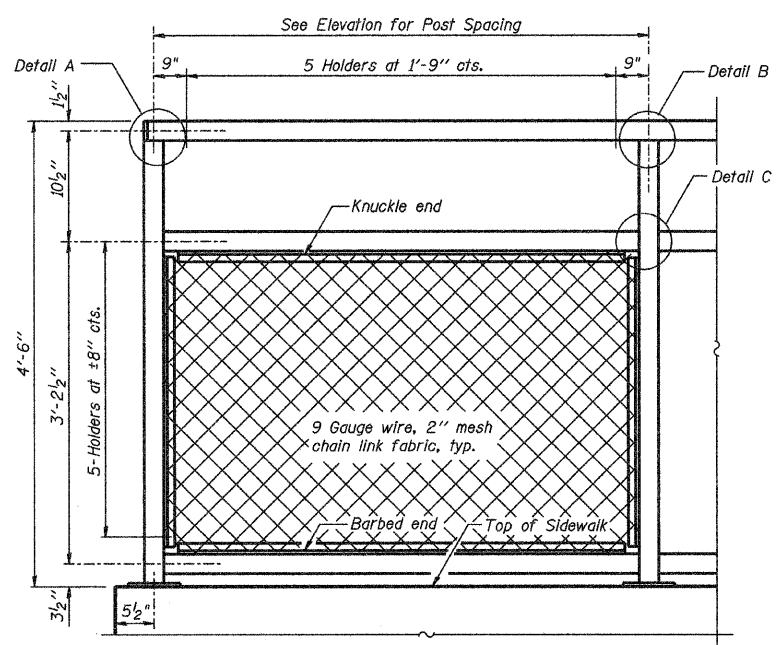


**BICYCLE RAILING ELEVATION**



**PARAPET RAILING ELEVATION**



**SECTION THRU BIKE PATH**

**FOOTING LOCATION**

Description	Station	Offset
S Abut #1	25+56.08	30.80' Lt
S Abut #2	25+47.63	31.71' Lt
N Abut #1	26+79.63	30.80' Lt
N Abut #2	26+88.08	31.71' Lt

**NOTES**

The chain link fabric shall be black vinyl coated and conform to the requirements of Article 1006.27(a)(1) of the Standard Specifications.

All posts, railing, splices, anchor devices and bent plates shall be painted using one of the two following paint systems:

- Inorganic Zinc-rich/Waterborne Acrylic for shop and field applications.
- Organic Zinc-rich/Epoxy/Urethane for full shop application.

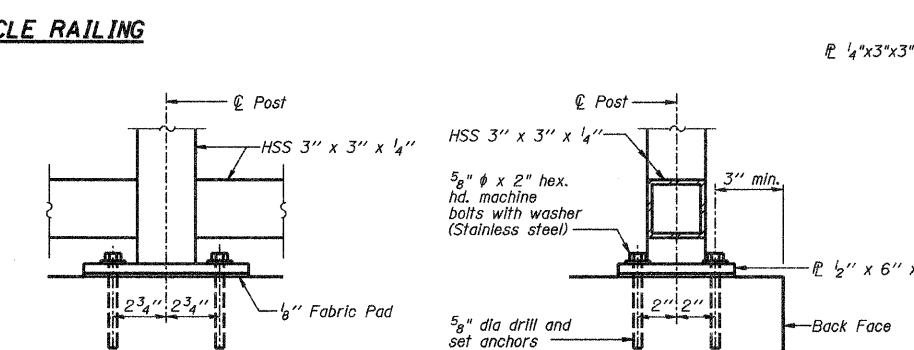
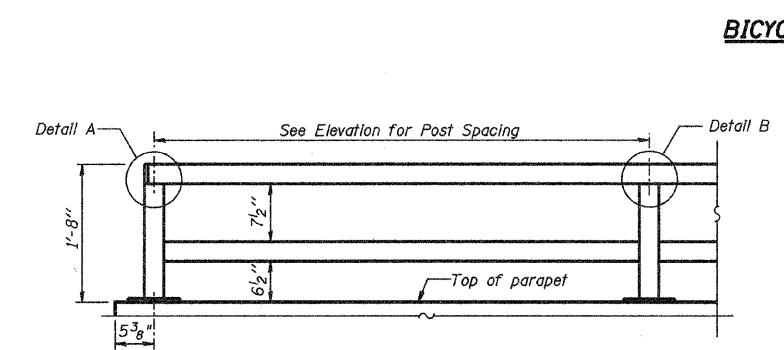
Finish paint color shall be NI-Black. See Special Provision "Cleaning and Painting New Metal Structures."

Footings for bicycle railing end panels shall be included in cost of Bicycle Railing, Special.

There will be a conflict with the bicycle railing concrete footings and the CLSM behind the abutment. The Contractor shall make adjustments so that full footing depth can be achieved.

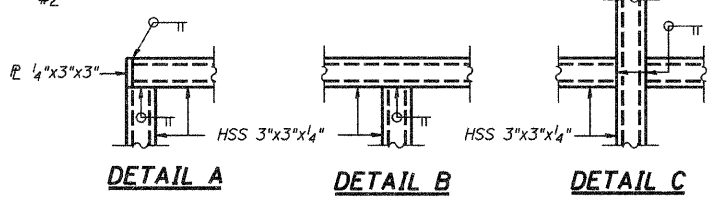
**BILL OF MATERIAL**

Item	Unit	Quantity
Bicycle Railing, Special	Foot	140
Parapet Railing	Foot	120

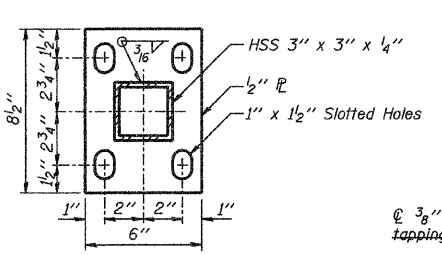


**ANCHOR BOLT DETAILS**

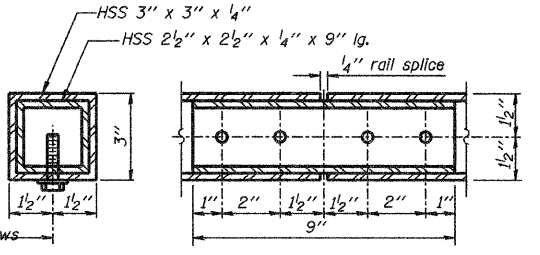
The Contractor shall drill and set 5/8 inch diameter anchor rods according to Article 509.06 of the Standard Specifications. Embedment shall be according to the manufacturer's specifications and shall not exceed 5 inches.



**DETAIL A DETAIL B DETAIL C**



**BASE P**



**RAIL SPLICE**

(10'-0" Maximum Post Spacing)

FILE NAME =	USER NAME = rking	DESIGNED ACB	REVISED -
I:\Municipalities\Moon_County\5127 Finl	Creek Bridge\CADD_Structural\Revised\Bicyc	DRAWN RLK	REVISED -
PLOT SCALE = 4.0000 "/ IN.	CHECKED JMB	DATE 1-11-11	REVISED -
PLOT DATE = 4/18/2011	DATE 1-11-11	REVISED -	REVISED -

**HOMER L. CHASTAIN & ASSOCIATES, LLP**  
CONSULTING ENGINEERS

DECATUR (317) 422-8544  
CHICAGO (773) 714-0050  
ROCKFORD (815) 489-0050  
184-001897

**BICYCLE RAIL DETAILS**  
**BALTIMORE AVE (CH 7) OVER FINLEY CREEK**

SCALE: SHEET NO. 7 OF 12 SHEETS STA. TO STA.

F.A.S. RTE.	SECTION	COUNTY	TOTAL SHEETS	SHEET NO.
CH 7	05-00198-BR	MACON	29	13

CONTRACT NO. [ILLINOIS] FED. AID PROJECT