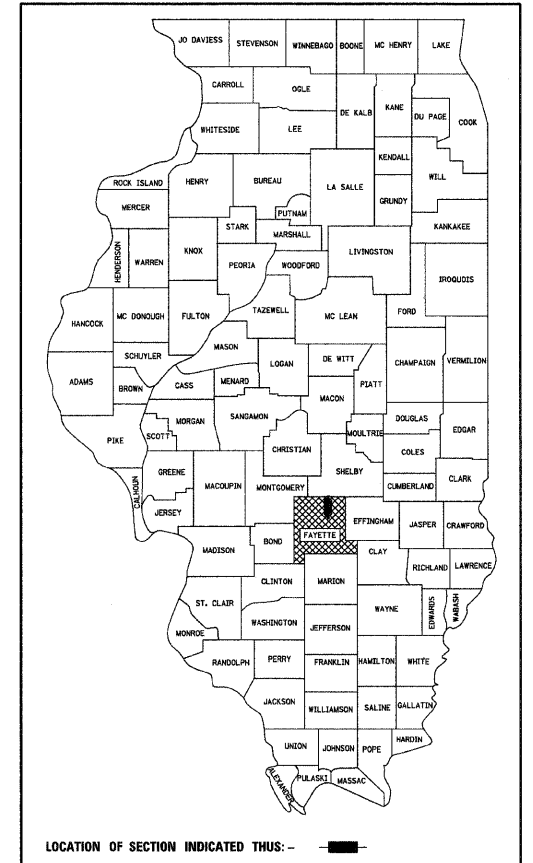


STATE OF ILLINOIS  
DEPARTMENT OF TRANSPORTATION

PLANS FOR PROPOSED  
HIGHWAY BRIDGE PROGRAM

FAS 1714 (CH 2)  
BIG CREEK  
SECTION 09-00119-00-BR  
PROJECT NO. BRS-1714(111)  
FAYETTE COUNTY  
JOB NO. C-97-046-11

F.A.S. RTE.	SECTION	COUNTY	TOTAL SHEETS	SHEET NO.
1714	09-00119-00-BR	FAYETTE	12	1
ILLINOIS				



FAYETTE COUNTY  
HIGHWAY DEPARTMENT

APPROVED 3-28, 20 11  
*[Signature]*  
FAYETTE COUNTY, COUNTY ENGINEER

PASSED 4-15, 20 11  
*[Signature]*  
DISTRICT SEVEN ENGINEER OF LOCAL ROADS & STREETS

RELEASING FOR BID  
BASED ON LIMITED  
REVIEW 4/15, 20 11  
*[Signature]*  
DEPUTY DIRECTOR OF HIGHWAYS, REGION FOUR ENGINEER

**PRINTED BY THE AUTHORITY  
OF THE STATE OF ILLINOIS**



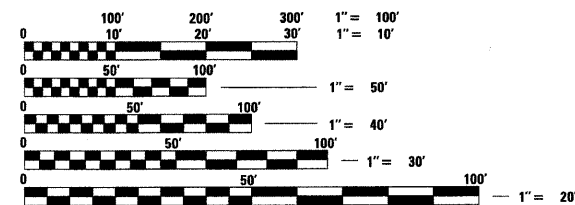
*[Signature]* 03-25-11  
GARY L. HAHN  
CENTRALIA, ILLINOIS  
ILLINOIS LICENSED PROFESSIONAL  
ENGINEER NO. 62-42606  
EXPIRES NOV. 30, 2011

- INDEX OF SHEETS**
- COVER SHEET
  - SUMMARY OF QUANTITIES, GENERAL NOTES, AND TYPICAL SECTIONS
  - PLAN AND PROFILE OF ROADWAY
  - GENERAL PLAN AND ELEVATION
  - 5.-6. PRECAST PRESTRESSED CONCRETE DECK BEAM DETAILS
  - STEEL RAILING, TYPE S1 DETAILS
  8. ABUTMENT DETAILS
  9. HP PILE DETAILS
  - 10.-12. CROSS SECTIONS OF ROADWAY

- HIGHWAY STANDARDS
- 000001-06 STANDARD SYMBOLS, ABBREVIATIONS AND PATTERNS
  - 280001-05 TEMPORARY EROSION CONTROL SYSTEMS
  - 515001-03 NAME PLATE FOR BRIDGES
  - 630001-09 STEEL PLATE BEAM GUARDRAIL
  - 630301-05 SHOULDER WIDENING FOR TYPE 1 (SPECIAL) GUARDRAIL TERMINALS
  - 635006-03 REFLECTOR AND TERMINAL MARKER PLACEMENT
  - 701901-01 TRAFFIC CONTROL DEVICES
  - B.L.R. 21-8 TYPICAL APPLICATION OF TRAFFIC CONTROL DEVICES FOR CONSTRUCTION ON RURAL LOCAL HIGHWAYS
  - B.L.R. 27-1 TRAFFIC BARRIER TERMINAL, TYPE 5A

SOIL BORINGS (SEE SPECIFICATIONS)

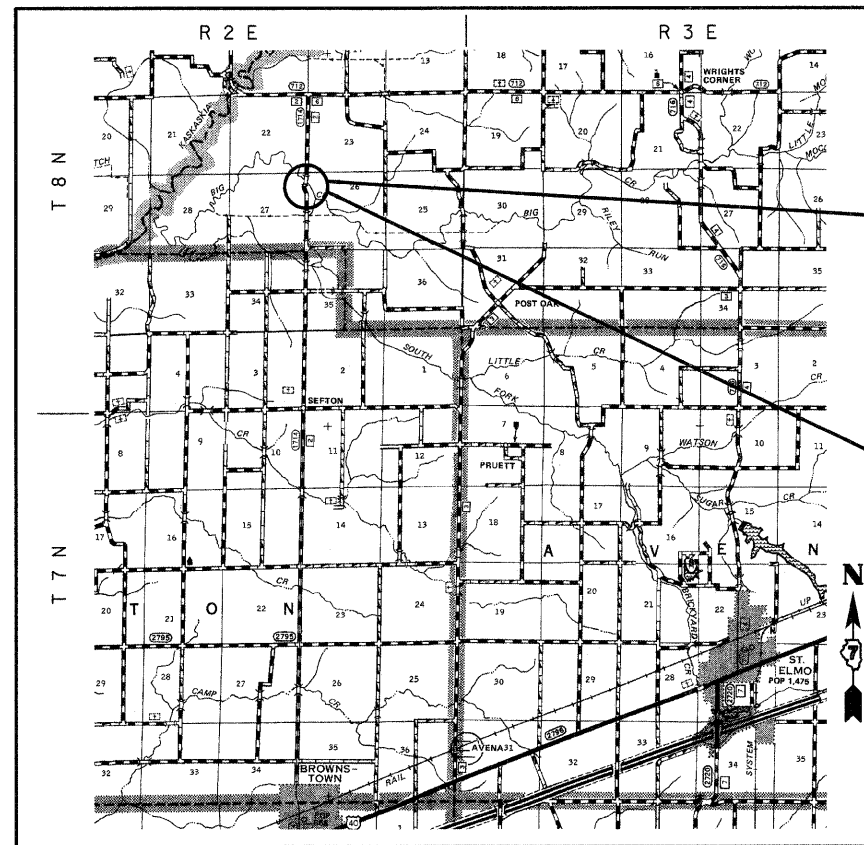
DESIGN CLASSIFICATION: RURAL MAJOR COLLECTOR  
ADT<sub>2011</sub> : 300  
ADT<sub>2031</sub> : 375  
DESIGN SPEED - 40 MPH



FULL SIZE PLANS HAVE BEEN PREPARED USING STANDARD ENGINEERING SCALES, REDUCED SIZED PLANS WILL NOT CONFORM TO STANDARD SCALES, IN MAKING MEASUREMENTS ON REDUCED PLANS, THE ABOVE SCALES MAY BE USED.

J.U.L.I.E.  
JOINT UTILITY LOCATING INFORMATION FOR EXCAVATORS  
1-800-892-0123 Website: <http://www.illinois1call.com>

CONTRACT NO. 95648



SECTION BEGINS  
STA. 5+50.00

SECTION 09-00119-00-BR INCLUDES THE CONSTRUCTION OF A SINGLE SPAN PRECAST PRESTRESSED CONCRETE DECK BEAM BRIDGE CARRYING FAS 1714 (CH 2) OVER BIG CREEK, 82'-6" BK. TO BK. ABUTMENTS X 28' WIDE. NO SKEW. EXISTING STRUCTURE NO. 026-3028 PROPOSED STRUCTURE NO. 026-3449

SECTION ENDS  
STA. 14+50.00

LOCATION: NEAR THE NW CORNER, SECTION 26, T8N, R2E, 3RD P.M.  
NET LENGTH OF PROJECT: 900.00 FT = 0.170 MI