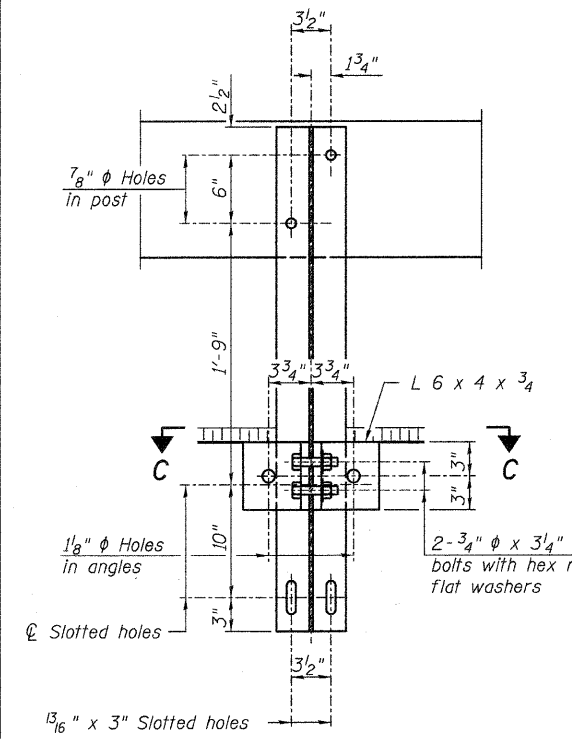
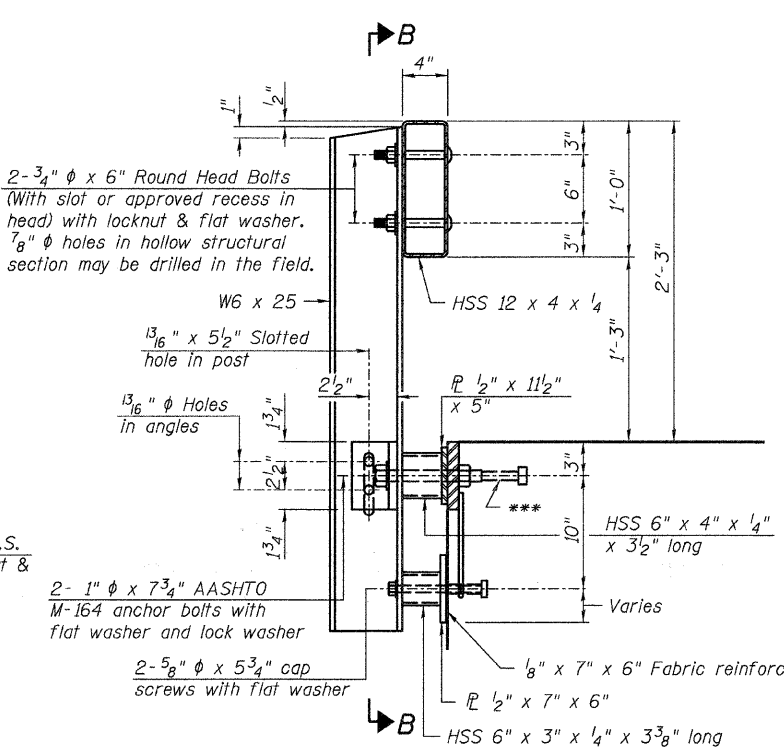


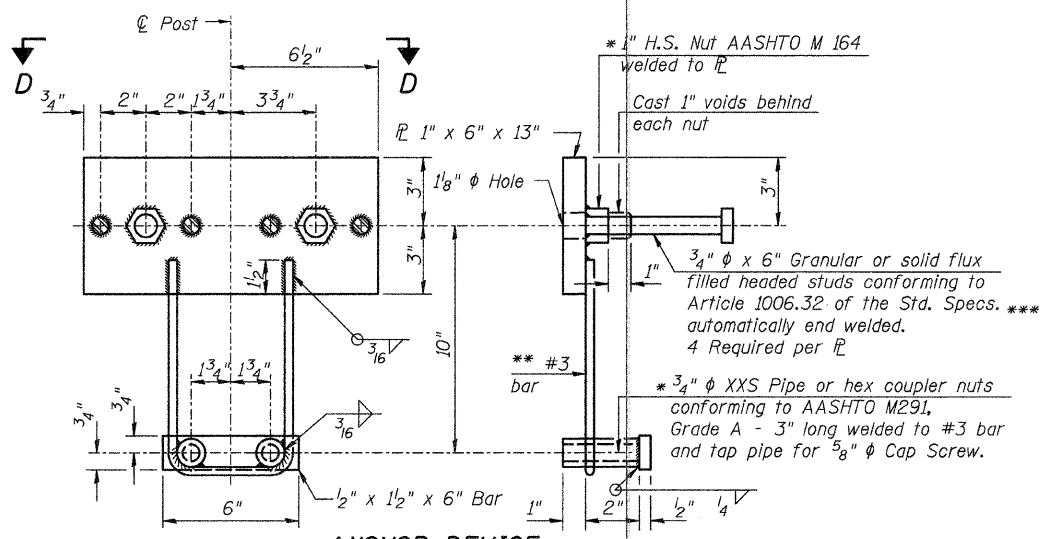
**RAIL POST SPACING**



**SECTION B-B**

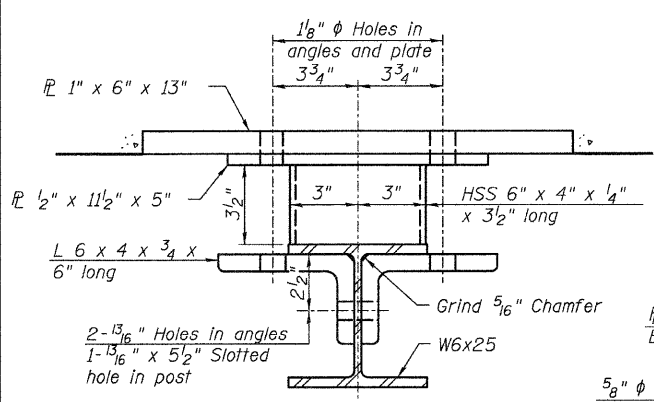


**SECTION AT RAILING POST**

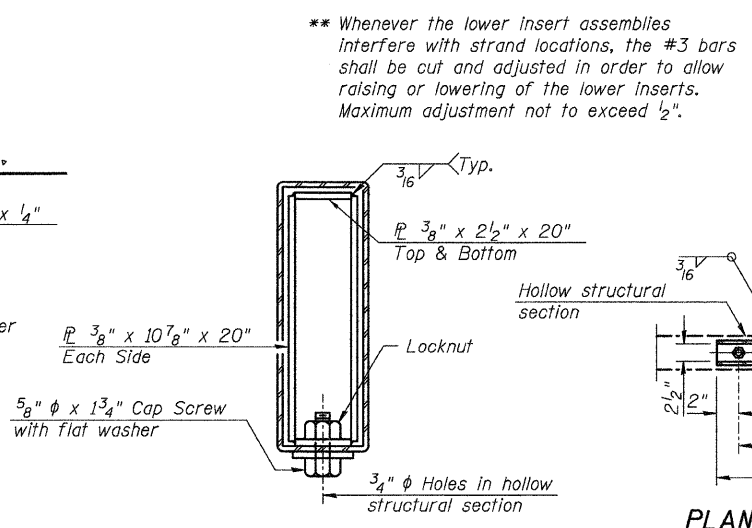


**ANCHOR DEVICE**

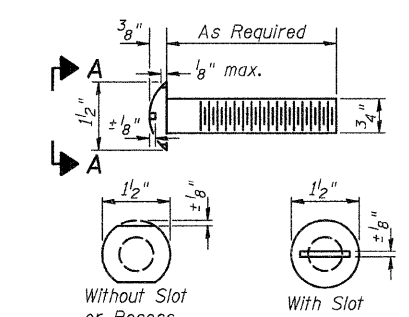
**Notes:**  
 All field drilled holes shall be coated with an approved zinc rich paint before erection.  
 For multi-span bridges, sufficient 1/4" x 6" x 1'-2" galvanized steel shims shall be provided to align rail between adjacent spans. Cast included with Steel Railing, Type S-1.  
 All steel rail elements shall be galvanized according to Article 509.05 of the Standard Specifications.  
 The studs of the anchor devices shall be placed below the top reinforcement bars and the outermost longitudinal reinforcement bar shall be placed directly above the studs of the rail post anchor device.



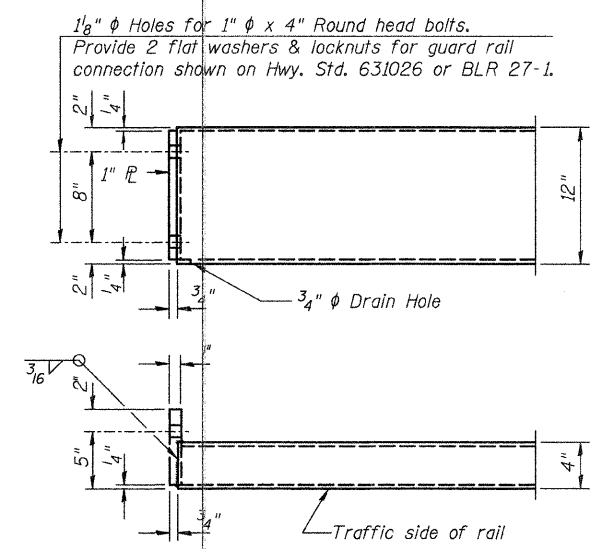
**SECTION C-C**



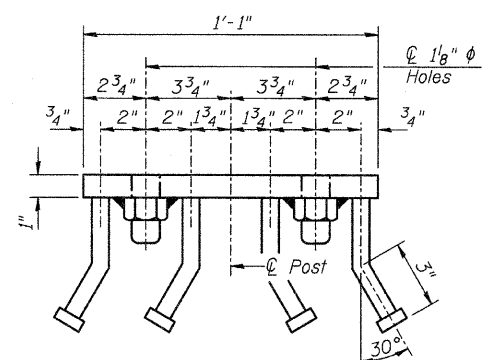
**SECTIONS AT RAIL SPLICE**



**VIEW A-A ROUND HEAD BOLT**



**END OF RAIL DETAILS**



**VIEW D-D**

**BILL OF MATERIAL**

Item	Unit	Quantity
Steel Railing, Type S1	Foot	166

**STEEL RAILING, TYPE S1 DETAILS  
 STRUCTURE NO. 026-3449**

F.A.S. RTE.	SECTION	COUNTY	TOTAL SHEETS	SHEET NO.
1714	09-00119-00-BR	FAYETTE	12	7
CONTRACT NO. 95648				
ILLINOIS FED. AID PROJECT				

03/25/2011 RAAI #50509

**RHUTASEL and ASSOCIATES, INC.**  
 CONSULTING ENGINEERS • LAND SURVEYORS  
 CENTRALIA, ILLINOIS FREEBURG, ILLINOIS  
 ILLINOIS DESIGN FIRM LICENSE NO. 184-000287