

GENERAL NOTES:

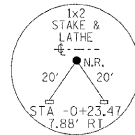
THIS SECTION SHALL BE CONSTRUCTED IN ACCORDANCE WITH THE PLANS, SPECIAL PROVISIONS AND "STANDARD SPECIFICATIONS FOR ROAD AND BRIDGE CONSTRUCTION", ADOPTED JANUARY 1, 2007.

THE WORK INVOLVED ON THIS SECTION CONSISTS OF THE REMOVAL OF THE EXISTING STRUCTURE, THE CONSTRUCTION OF A 106 FOOT LONG TRIPLE SPAN (33', 40', 33') PRECAST PRESTRESSED CONCRETE DECK BEAM BRIDGE, EARTH APPROACHES, AGGREGATE SURFACE COURSE AND OTHER MISCELLANEOUS ITEMS NECESSARY TO COMPLETE THIS SECTION.

ALL ELEVATIONS ARE BASED ON U.S.G.S. MEAN SEA LEVEL DATUM.

IT SHALL BE THE CONTRACTOR'S RESPONSIBILITY TO CONTACT ALL THE UTILITIES, AFFECTING THE PROJECT, PRIOR TO CONSTRUCTION.

NOTE: CONSTRUCTION TRANSITIONS
 STA. 2+35 TO STA. 2+85
 STA. 7+15 TO STA. 7+65
 ALL QUANTITIES ARE INCLUDED IN THE PROPOSAL



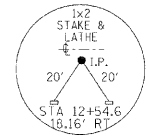
P.I. STA = 3+88.44
 $\Delta = 00^{\circ}37'34''$ RT



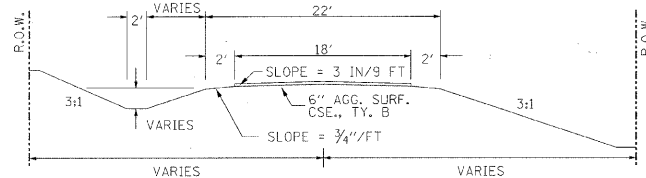
| T.R. | SECTION | COUNTY | TOTAL SHEETS | SHEET NO. |
|--------------------------------|----------------|------------------|--------------|-----------|
| 273 | 09-16122-00-BR | WAYNE | 16 | 2 |
| FED. ROAD DIST. NO. 7 ILLINOIS | | DIVERSION DITCH | | |
| PROJECT # BR05-191062 | | CONTRACT # 95650 | | |
| LEC JOB # H10102NA | | | | |

323 W. 3RD ST.
 P.O. BOX 160
 MT. CARMEL, IL
 62863
 PHONE:
 (618)-262-8651
 FAX:
 (618)-263-3327

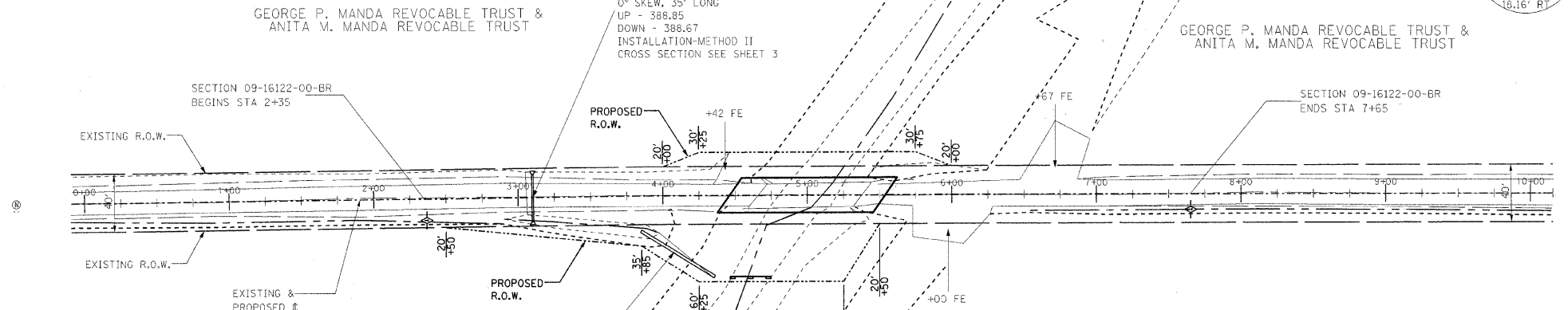
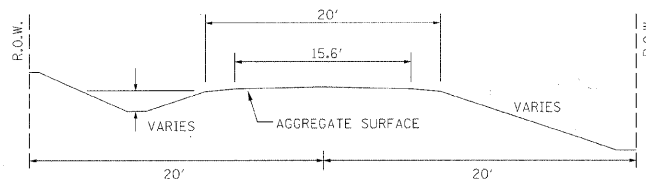
405 W. STATE ST
 SUITE 1
 PRINCETON, IN
 47370
 PHONE:
 (812)-386-7611
 FAX:
 (812)-385-2812



TYPICAL CROSS SECTION PROPOSED



TYPICAL CROSS SECTION EXISTING



UTILITIES:
 J.U.L.I.E. 1-800-892-0123

JAMES RANDALL HEDRICK

MARTIN E. MAYES ETAL.

EXISTING BRIDGE STA 5+03.7; STRUCTURE NUMBER: 096-3112
 A 73' LONG DOUBLE SPAN BRIDGE WITH 4" STEEL DECK WITH
 7-24"x7" I-BEAMS ON CONCRETE MUDWALLS WITH A WOOD
 PILE PIER.

ONE (1) EACH-REMOVAL OF EXISTING STRUCTURES ALLOWED IN
 THIS PROPOSAL.

PROPOSED STRUCTURE: NO. 096-3455, STA 5+00,
 A 106' LONG TRIPLE SPAN (33', 40', 33') P.P.C.D.B. BRIDGE
 WITH 17" DEPTH BEAMS, SPILL THROUGH TYPE ABUTMENTS,
 24' WIDTH, 0% GRADE, 35' LT FWD. SKEW.

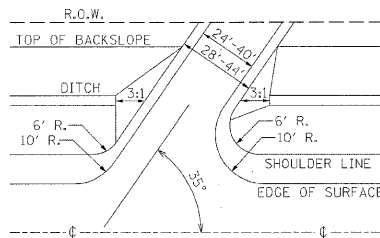
SEE SHEETS 5-16 FOR THE DESIGN AND BILL OF MATERIALS.

NOTE: FILL NEXT TO BRIDGE TO BE
 AGGREGATE SURFACE COURSE

TEMPORARY DITCH CHECKS
 AGGREGATE (EROSION CONTROL)

14.0 FOOT TEMPORARY DITCH CHECKS
 22.0 TONS AGGREGATE (EROSION CONTROL)
 0.3 ACRES SEEDING, CLASS 2 SPECIAL REQUIRED

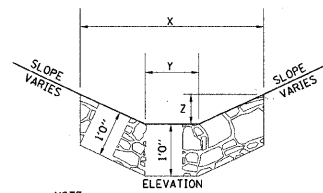
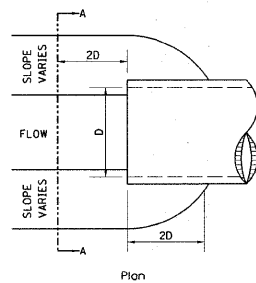
FIELD ENTRANCE DETAIL



NOTE: CONSTRUCT SPECIAL DITCH
 STA 2+35 TO STA 3+85 RT
 STA 6+50 TO STA 7+65 RT

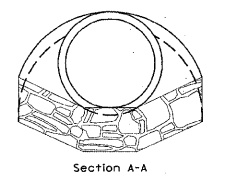
NOTE: CONSTRUCT STONE LINED DITCH
 STA 3+10 17' TO 20' LT (0.62 TON/LIN FT)
 STA 3+05 TO STA 3+85 RT (0.62 TON/LIN FT)
 STA 4+35 TO STA 4+40 RT (0.62 TON/LIN FT)
 55 TON STONE LINED DITCH ALLOWED IN PROPOSAL.
 SEE STONE LINED DITCH DETAIL.

STONE LINED DITCH DESIGN

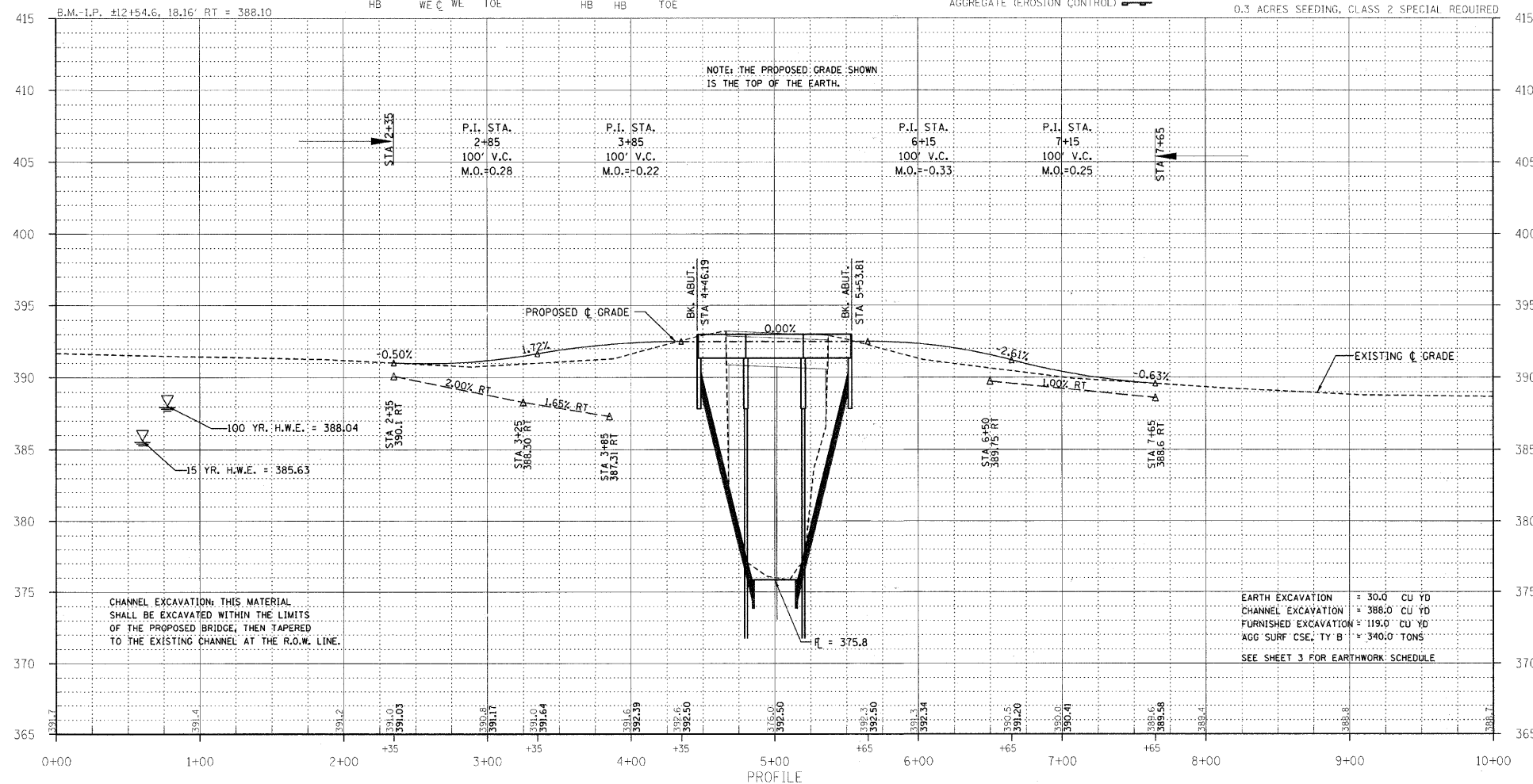


NOTE:
 BOTTOM OF DITCH

| NOTE: | SLOPE | | |
|-------|----------|------|------------------|
| | 1 1/2h | 2h | 3h |
| 2 FT | X = 5 FT | 6 FT | 8 FT |
| | Y = 2 FT | 2 FT | 2 FT |
| | Z = 1 FT | 1 FT | 1 FT |
| | 0.40 | 0.48 | 0.62 TON/LIN. FT |



NOTE: FOR PLACEMENT, QUALITY
 GRADATION AND OTHER MISCELLANEOUS
 REQUIREMENTS FOR STONE LINED
 DITCH-SEE SPECIAL PROVISIONS.



PROFESSIONAL DESIGN FIRM
 LAND SURVEY &
 PROFESSIONAL ENGINEERING
 CORPORATION
 184-00887
 (62-052435)(35-002769)



AARON M. MEFFORD
 NAME
 SIGNATURE
 DATE
 4-7-11
 11-30-11
 EXPIRES

DIVERSION DITCH
 TOWNSHIP ROUTE 273
 WAYNE COUNTY, ILLINOIS

SHEET TITLE:
 PLAN & PROFILE

SCALE: VARIES
 BY: AMM
 DATE: 4/08/11
 REV:

2 OF 16
 SHEETS
 SHEET NO.
 2