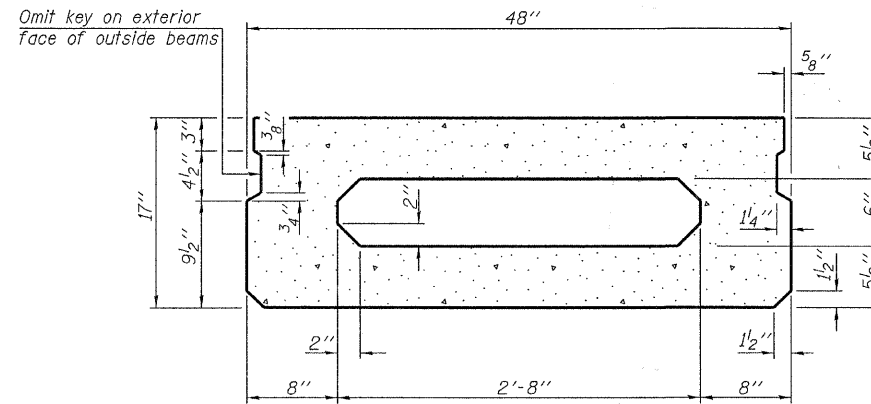
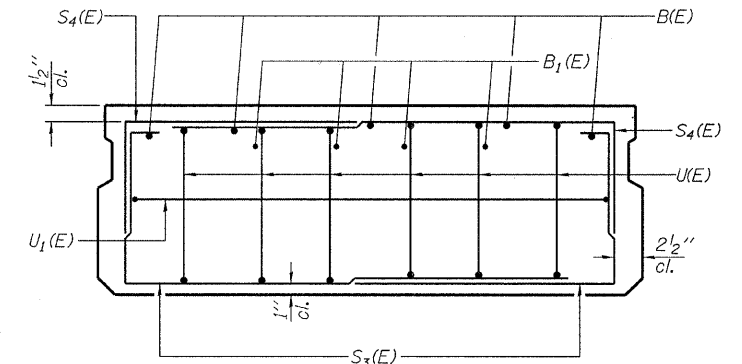


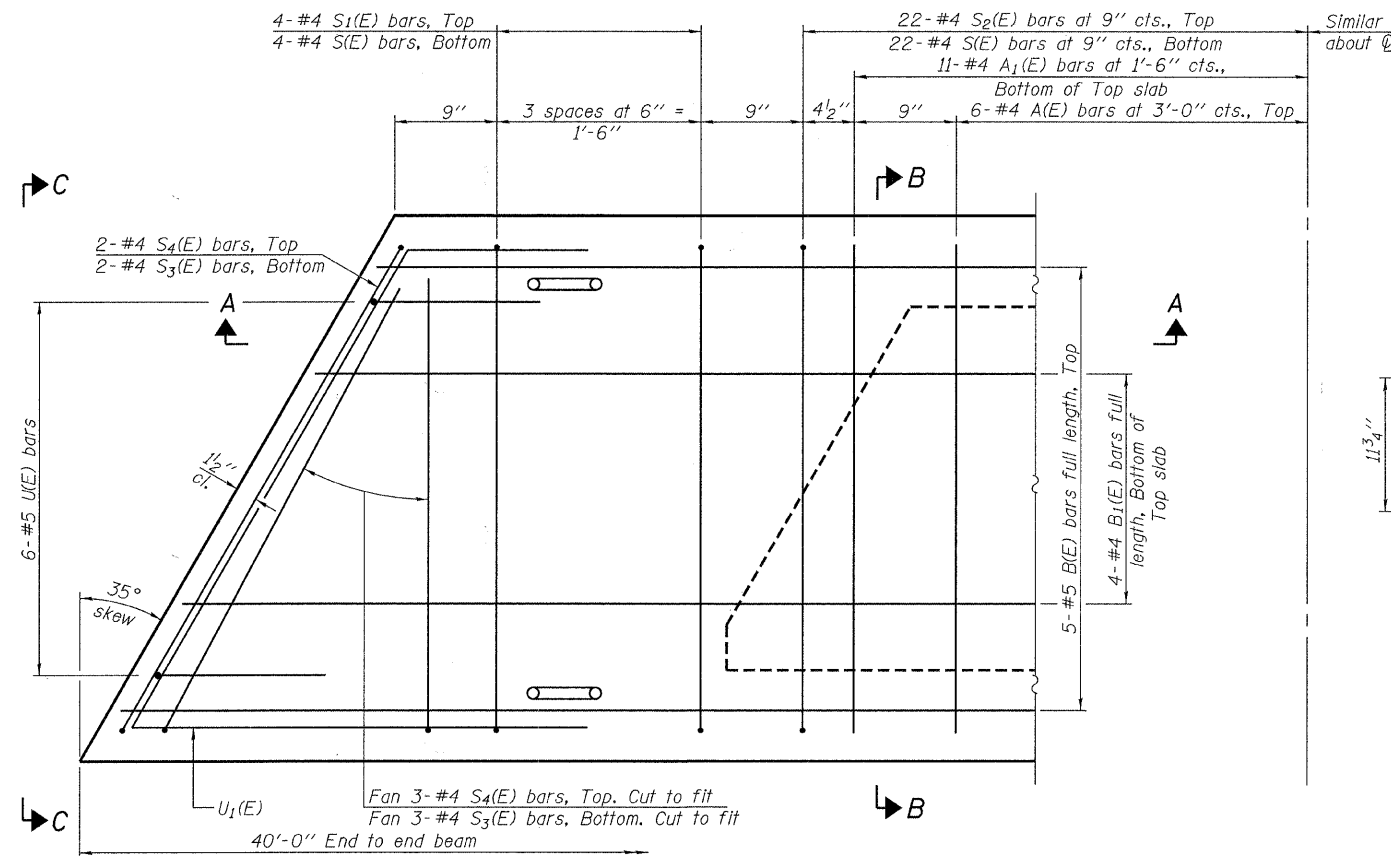
SECTION A-A



SECTION B-B
(Showing dimensions)

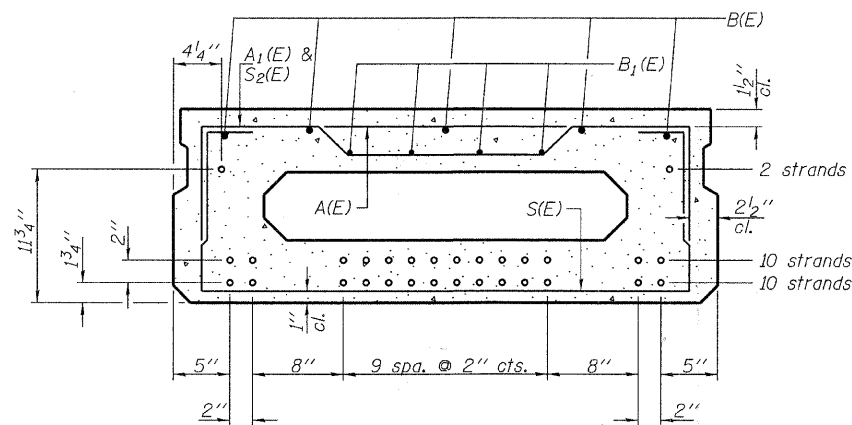


VIEW C-C



PLAN VIEW

Note: Spacing of S(E) and S2(E) bars may be adjusted up to 4" in the immediate area of the transverse tie diaphragms to miss the block outs for the transverse ties.



SECTION B-B

(Showing reinforcement and permissible strand locations)

Note: Place the number of strands specified in each row symmetrically about the centerline of beam in the permissible strand locations shown.

BAR LIST
ONE BEAM ONLY
(For information only)

Bar	No.	Size	Length	Shape
A(E)	12	#4	3'-7"	—
A1(E)	22	#4	3'-10"	—
B(E)	5	#5	39'-8"	—
B1(E)	4	#4	39'-8"	—
S(E)	52	#4	6'-9"	⌈
S1(E)	8	#4	5'-3"	⌈
S2(E)	44	#4	5'-6"	⌈
S3(E)	10	#4	4'-8"	⌈
S4(E)	10	#4	3'-11"	⌈
U(E)	12	#5	3'-8"	⌈
U1(E)	2	#4	9'-3"	⌈

Note: See sheets 5 & 6 of 12 for additional details and Bill of Material.

MINIMUM BAR LAP

#4 bar = 2'-0"
#5 bar = 2'-6"

PD-1748-L

7-1-10

FILE NAME = 100030-shr-bridge.dgn	USER NAME =	DESIGNED - A.S.L.	REVISED -	STATE OF ILLINOIS WAYNE COUNTY HIGHWAY DEPARTMENT	17" x 48" PPC DECK BEAM - SPAN 2 STRUCTURE NO. 096-3455	T.R.	SECTION	COUNTY	TOTAL SHEETS	SHEET NO.	
HAMPTON, LENZINI AND RENWICK, INC. 3005 STEPHENSON DRIVE, SUITE 201 SPRINGFIELD, ILLINOIS 62703	PLOT SCALE =	CHECKED - S.W.M.	REVISED -			273	09-16122-00-BR	WAYNE	16	8	
ILLINOIS PROFESSIONAL DESIGN FIRM LS / PE / SE CORP. 184-00089	PLOT DATE = 4/5/2011	DRAWN - D.A.B.	REVISED -			MASSILON TOWNSHIP		CONTRACT NO. 95650		ILLINOIS FED. AID PROJECT	
		CHECKED - S.W.M.	REVISED -			SHEET NO. 4 OF 12 SHEETS					