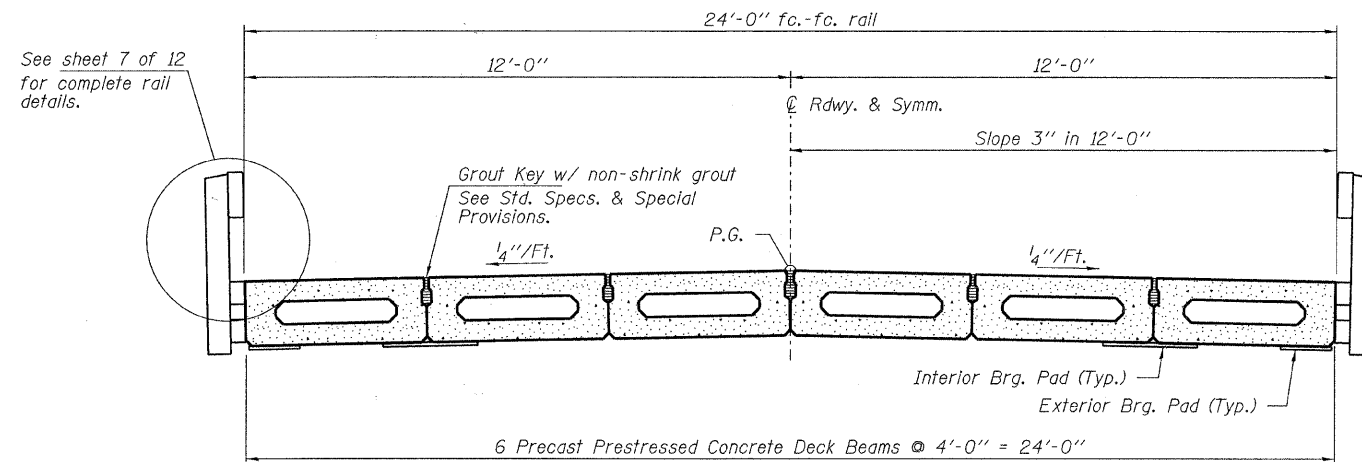
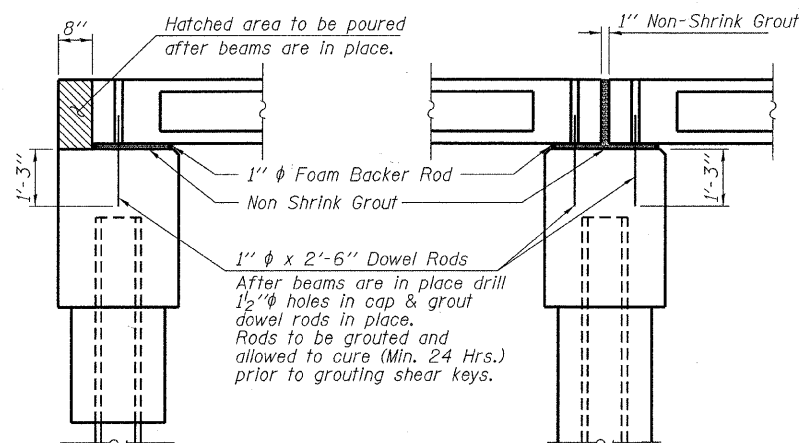


**ELEVATION**  
Showing Rail Post Spacing  
See sheet 7 of 12 for Railing Details.

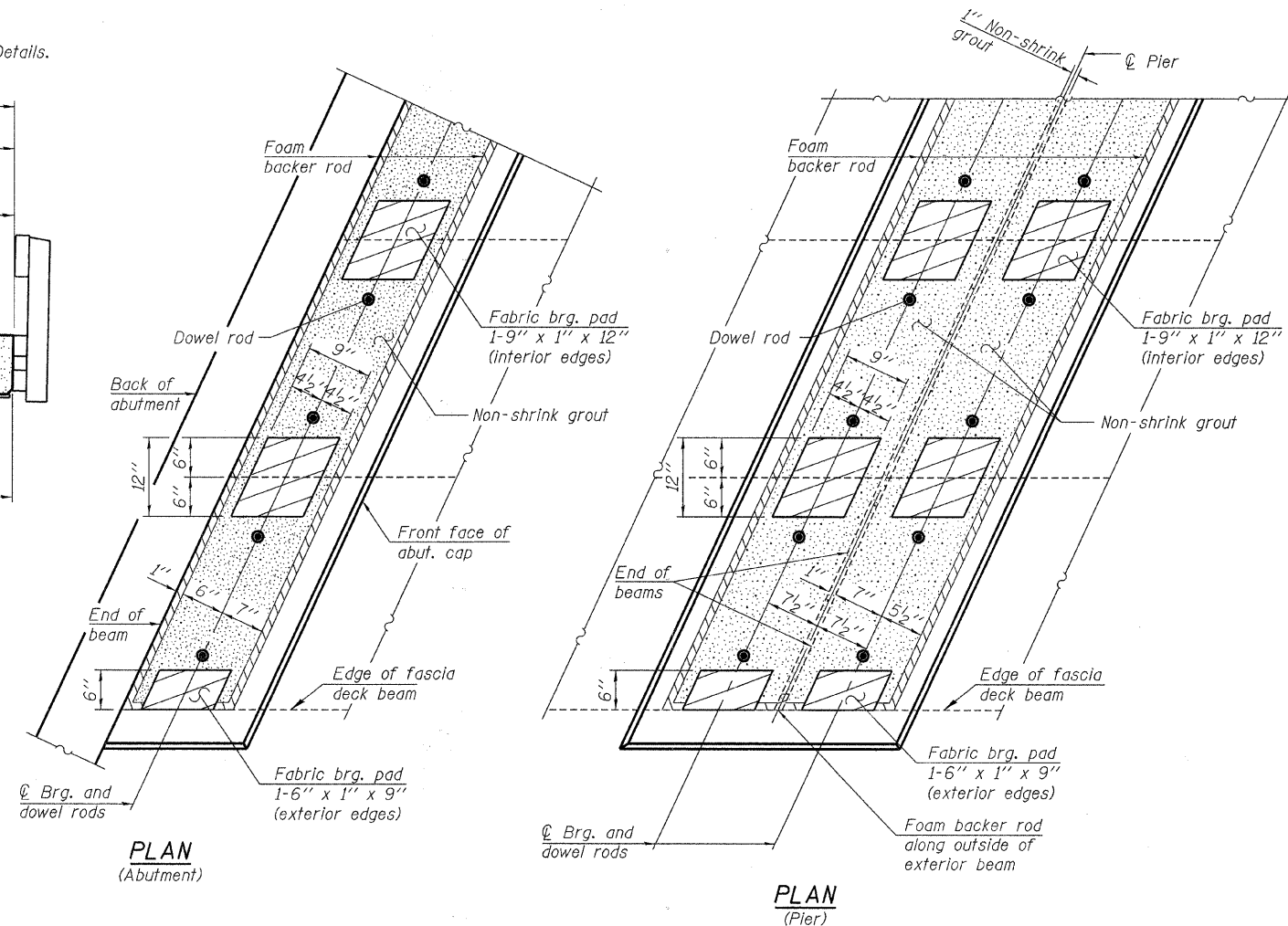


**CROSS SECTION**  
See sheets 2 thru 5 of 12 for Superstructure.



**SECTION AT ABUTMENTS**  
© Rt. L's

**SECTION AT PIERS**  
© Rt. L's



**PLAN**  
(Abutment)

**PLAN**  
(Pier)

**Notes:**  
The bearing seat surfaces shall be adjusted by shimming the bearing to assure firm and even bearing prior to placement of grout. 2-1/8" fabric adjusting shims of the dimensions of the exterior bearing pad shown shall be provided for each bearing.

FILE NAME = 100030-sh1-bridge.dgn	USER NAME =	DESIGNED - A.S.L.	REVISED -
HAMPTON, LENZINI AND RENWICK, INC. 3005 STEVENSON DRIVE, SUITE 201 SPRINGFIELD, ILLINOIS 62703	PLOT SCALE =	CHECKED - S.W.M.	REVISED -
ILLINOIS PROFESSIONAL DESIGN FIRM L.S. / P.E. / S.E. CORP. 184-00095	PLOT DATE = 4/5/2011	DRAWN - D.A.B.	REVISED -
		CHECKED - S.W.M.	REVISED -

**STATE OF ILLINOIS**  
**WAYNE COUNTY HIGHWAY DEPARTMENT**

**SUPERSTRUCTURE DETAILS**  
**STRUCTURE NO. 096-3455**

SHEET NO. 6 OF 12 SHEETS

T.R.	SECTION	COUNTY	TOTAL SHEETS	SHEET NO.
273	09-16122-00-BR	WAYNE	16	10
MASSILON TOWNSHIP			CONTRACT NO. 95650	
ILLINOIS FED. AID PROJECT				