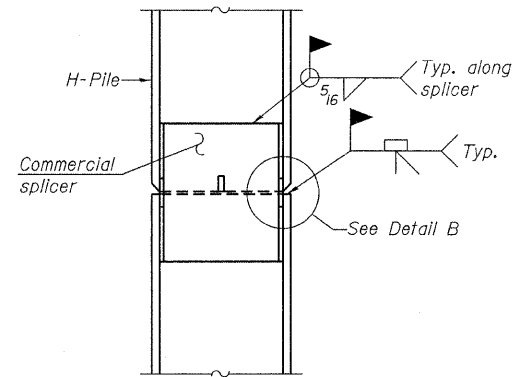
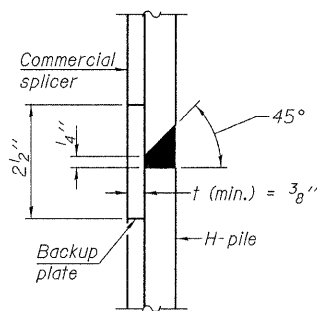


**STEEL PILE TABLE**

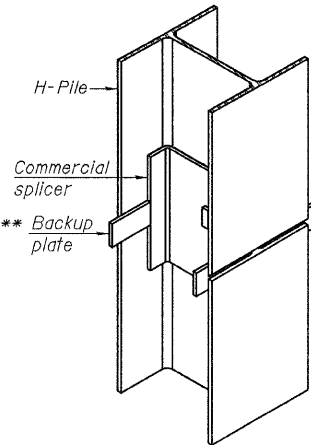
Designation	Depth d	Flange width b <sub>f</sub>	Web and Flange thickness t	Encasement diameter A
HP 14x117	14 <sup>1</sup> / <sub>4</sub> "	14 <sup>7</sup> / <sub>8</sub> "	1 <sup>3</sup> / <sub>16</sub> "	30"
x102	14"	14 <sup>3</sup> / <sub>4</sub> "	1 <sup>1</sup> / <sub>16</sub> "	30"
x89	13 <sup>7</sup> / <sub>8</sub> "	14 <sup>3</sup> / <sub>4</sub> "	5 <sup>5</sup> / <sub>8</sub> "	30"
x73	13 <sup>5</sup> / <sub>8</sub> "	14 <sup>5</sup> / <sub>8</sub> "	1 <sup>1</sup> / <sub>2</sub> "	30"
HP 12x84	12 <sup>1</sup> / <sub>4</sub> "	12 <sup>1</sup> / <sub>4</sub> "	1 <sup>1</sup> / <sub>16</sub> "	24"
x74	12 <sup>3</sup> / <sub>8</sub> "	12 <sup>1</sup> / <sub>4</sub> "	5 <sup>5</sup> / <sub>8</sub> "	24"
x63	12"	12 <sup>3</sup> / <sub>8</sub> "	1 <sup>1</sup> / <sub>2</sub> "	24"
x53	11 <sup>3</sup> / <sub>4</sub> "	12"	7 <sup>1</sup> / <sub>16</sub> "	24"
HP 10x57	10"	10 <sup>1</sup> / <sub>4</sub> "	9 <sup>9</sup> / <sub>16</sub> "	24"
x42	9 <sup>3</sup> / <sub>4</sub> "	10 <sup>3</sup> / <sub>8</sub> "	7 <sup>1</sup> / <sub>16</sub> "	24"
HP 8x36	8"	8 <sup>3</sup> / <sub>8</sub> "	7 <sup>1</sup> / <sub>16</sub> "	18"



**ELEVATION**

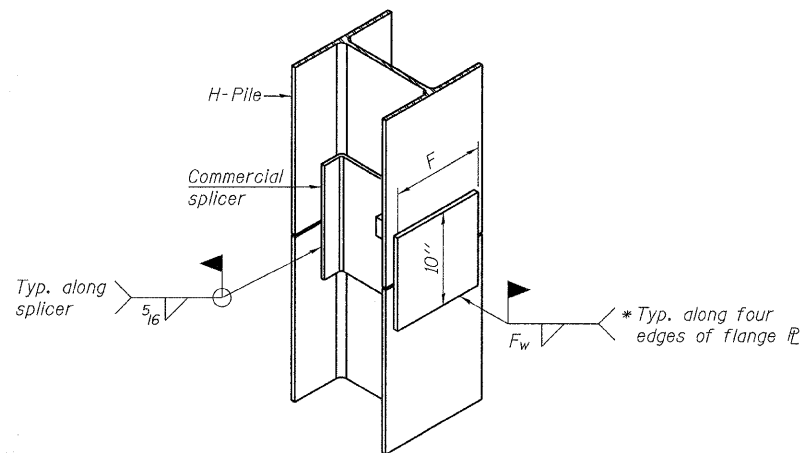


**DETAIL "B"**



**ISOMETRIC VIEW**

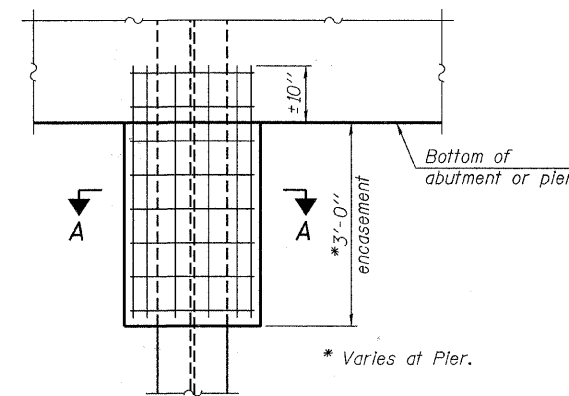
**WELDED COMMERCIAL SPLICE**



**ISOMETRIC VIEW**

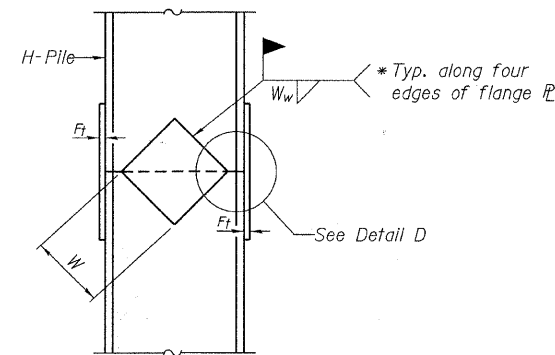
**WELDED COMMERCIAL SPLICE ALTERNATE**

- \* Interrupt welds 1/4" from end of web and/or each flange.
- \*\* Remove portions of backup plates that extend outside the flanges.
- \*\*\* Weld size per pile shoe manufacturer (5/16" min.).

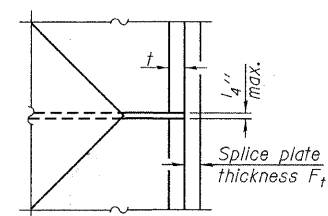


**ELEVATION**

**PILE ENCASEMENT**

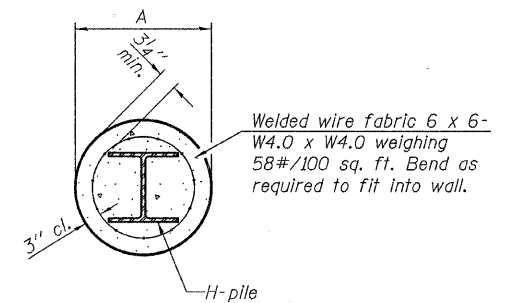


**ELEVATION**



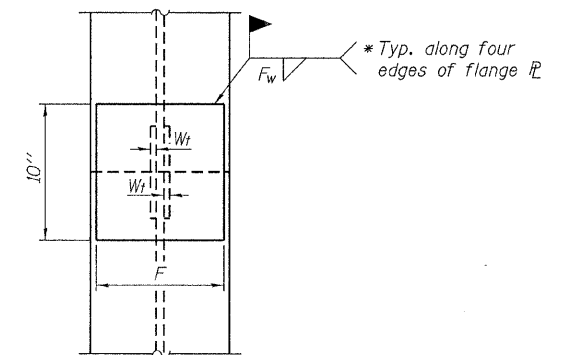
**DETAIL D**

**WELDED PLATE FIELD SPLICE**



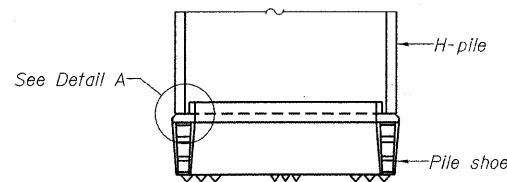
**SECTION A-A**

Note:  
Forms for encasement may be omitted when soil conditions permit.

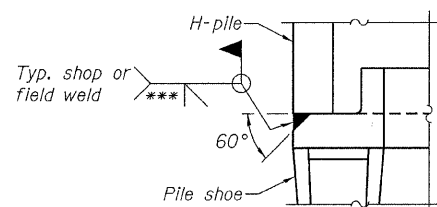


**END VIEW**

Designation	F	F <sub>t</sub>	F <sub>w</sub>	W	W <sub>t</sub>	W <sub>w</sub>
HP 14x117	12 <sup>1</sup> / <sub>2</sub> "	1"	7 <sup>7</sup> / <sub>8</sub> "	7 <sup>3</sup> / <sub>4</sub> "	5 <sup>5</sup> / <sub>8</sub> "	1 <sup>1</sup> / <sub>2</sub> "
x102	12 <sup>1</sup> / <sub>2</sub> "	7 <sup>7</sup> / <sub>8</sub> "	3 <sup>3</sup> / <sub>4</sub> "	7 <sup>3</sup> / <sub>4</sub> "	5 <sup>5</sup> / <sub>8</sub> "	1 <sup>1</sup> / <sub>2</sub> "
x89	12 <sup>1</sup> / <sub>2</sub> "	3 <sup>3</sup> / <sub>4</sub> "	1 <sup>1</sup> / <sub>16</sub> "	7 <sup>3</sup> / <sub>4</sub> "	5 <sup>5</sup> / <sub>8</sub> "	1 <sup>1</sup> / <sub>2</sub> "
x73	12 <sup>1</sup> / <sub>2</sub> "	5 <sup>5</sup> / <sub>8</sub> "	9 <sup>9</sup> / <sub>16</sub> "	7 <sup>3</sup> / <sub>4</sub> "	5 <sup>5</sup> / <sub>8</sub> "	1 <sup>1</sup> / <sub>2</sub> "
HP 12x84	10"	7 <sup>7</sup> / <sub>8</sub> "	1 <sup>1</sup> / <sub>16</sub> "	6 <sup>1</sup> / <sub>2</sub> "	5 <sup>5</sup> / <sub>8</sub> "	1 <sup>1</sup> / <sub>2</sub> "
x74	10"	7 <sup>7</sup> / <sub>8</sub> "	1 <sup>1</sup> / <sub>16</sub> "	6 <sup>1</sup> / <sub>2</sub> "	5 <sup>5</sup> / <sub>8</sub> "	1 <sup>1</sup> / <sub>2</sub> "
x63	10"	5 <sup>5</sup> / <sub>8</sub> "	1 <sup>1</sup> / <sub>2</sub> "	6 <sup>1</sup> / <sub>2</sub> "	1 <sup>1</sup> / <sub>2</sub> "	3 <sup>3</sup> / <sub>8</sub> "
x53	10"	5 <sup>5</sup> / <sub>8</sub> "	1 <sup>1</sup> / <sub>2</sub> "	6 <sup>1</sup> / <sub>2</sub> "	1 <sup>1</sup> / <sub>2</sub> "	3 <sup>3</sup> / <sub>8</sub> "
HP 10x57	8"	3 <sup>3</sup> / <sub>4</sub> "	9 <sup>9</sup> / <sub>16</sub> "	5 <sup>1</sup> / <sub>4</sub> "	1 <sup>1</sup> / <sub>2</sub> "	3 <sup>3</sup> / <sub>8</sub> "
x42	8"	5 <sup>5</sup> / <sub>8</sub> "	9 <sup>9</sup> / <sub>16</sub> "	5 <sup>1</sup> / <sub>4</sub> "	1 <sup>1</sup> / <sub>2</sub> "	3 <sup>3</sup> / <sub>8</sub> "
HP 8x36	7"	5 <sup>5</sup> / <sub>8</sub> "	7 <sup>1</sup> / <sub>16</sub> "	4 <sup>1</sup> / <sub>4</sub> "	1 <sup>1</sup> / <sub>2</sub> "	3 <sup>3</sup> / <sub>8</sub> "



**ELEVATION**



**DETAIL A**

**H-PILE SHOE ATTACHMENT**

F-HP 7-1-10

FILE NAME = 100030-shr-bridge.dgn	USER NAME =	DESIGNED - A.S.L.	REVISED -	<b>STATE OF ILLINOIS WAYNE COUNTY HIGHWAY DEPARTMENT</b>	<b>HP PILE DETAILS STRUCTURE NO. 096-3455</b>	T.R.	SECTION	COUNTY	TOTAL SHEETS	SHEET NO.	
HAMPTON, LENZINI AND RENWICK, INC. 336 STEVENSON DRIVE, SUITE 207 SPRINGFIELD, ILLINOIS 62703	PLOT SCALE =	CHECKED - S.W.M.	REVISED -			273	09-16122-00-BR	WAYNE	16	14	
ILLINOIS PROFESSIONAL DESIGN FIRM L.E. PEI & ASSOCIATES 184-000883	PLOT DATE = 4/5/2011	DRAWN - D.A.B.	REVISED -			CONTRACT NO. 95650					
		CHECKED - S.W.M.	REVISED -			ILLINOIS FED. AID PROJECT					

SHEET NO. 10 OF 12 SHEETS