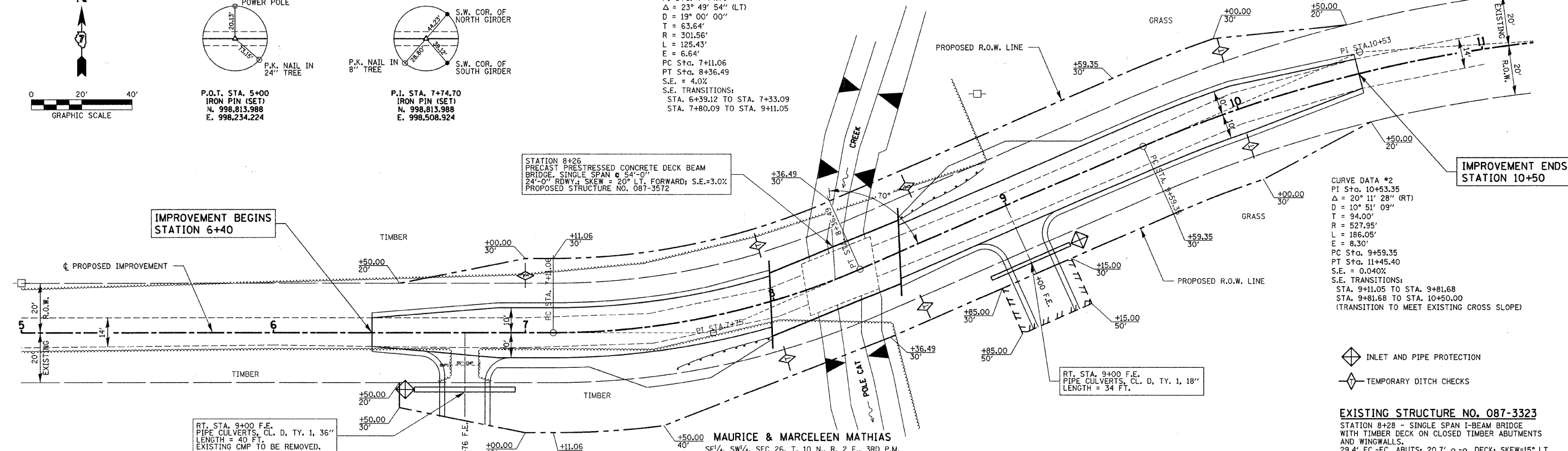


**CURVE DATA #1**  
 PI Sta. 7+74.70  
 $\Delta = 23^\circ 49' 54''$  (LT)  
 $D = 19^\circ 00' 00''$   
 $T = 63.64'$   
 $R = 301.56'$   
 $L = 125.43'$   
 $E = 6.64'$   
 PC Sta. 7+11.06  
 PT Sta. 8+36.49  
 S.E. = 4.0%  
 S.E. TRANSITIONS:  
 STA. 6+39.12 TO STA. 7+33.09  
 STA. 7+80.09 TO STA. 9+11.05

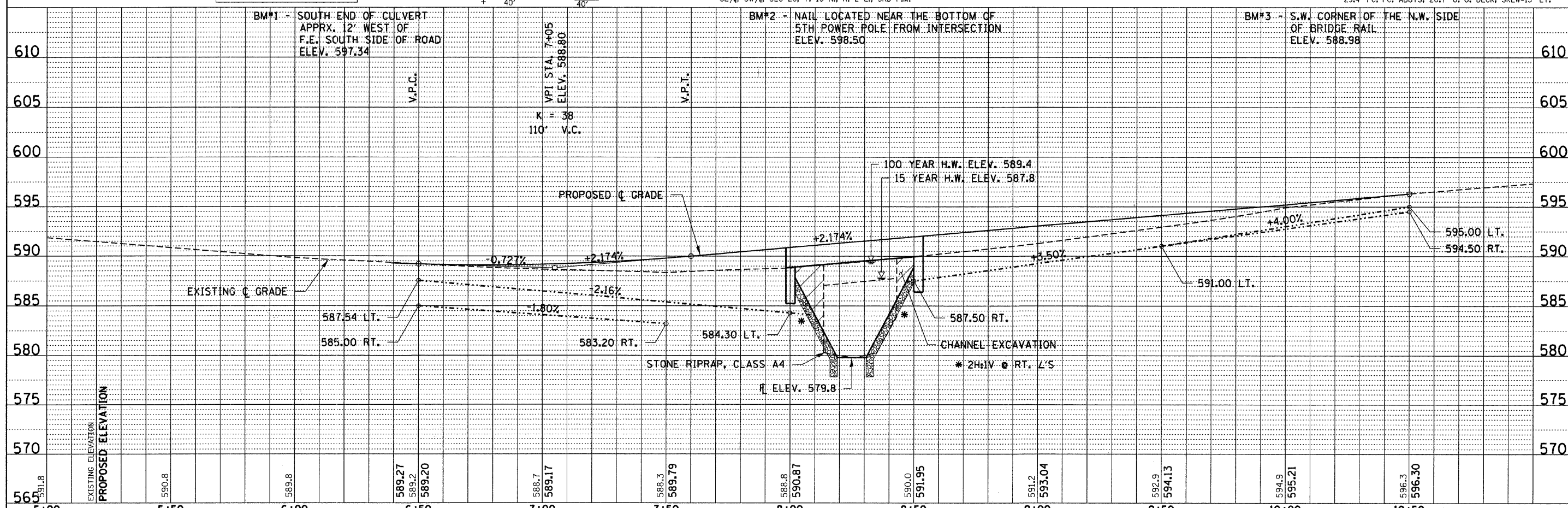
**MAURICE & MARCELEN MATHIAS**  
 SW 1/4, SE 1/4, SEC 26, T. 10 N., R. 2 E., 3RD P.M.

**CURVE DATA #2**  
 PI Sta. 10+53.35  
 $\Delta = 20^\circ 11' 28''$  (RT)  
 $D = 10^\circ 51' 09''$   
 $T = 94.00'$   
 $R = 527.95'$   
 $L = 186.05'$   
 $E = 8.30'$   
 PC Sta. 9+59.35  
 PT Sta. 11+45.40  
 S.E. = 0.040%  
 S.E. TRANSITIONS:  
 STA. 9+11.05 TO STA. 9+81.68  
 STA. 9+81.68 TO STA. 10+50.00  
 (TRANSITION TO MEET EXISTING CROSS SLOPE)

DATE	
BY	
REVISIONS	
NO.	
DATE	
BY	
REVISIONS	
NO.	
DATE	
BY	
REVISIONS	
NO.	
DATE	
BY	
REVISIONS	
NO.	



DATE	
BY	
REVISIONS	
NO.	
DATE	
BY	
REVISIONS	
NO.	
DATE	
BY	
REVISIONS	
NO.	



FILE NAME = 078476-shr-pp1.dgn	USER NAME =	DESIGNED - J.W.F.	REVISED -	<b>STATE OF ILLINOIS</b> <b>SHELBY COUNTY HIGHWAY DEPARTMENT</b>		<b>PLAN &amp; PROFILE</b> <b>T.R. 373 / CORLEY RIDGE ROAD</b>	T.R.	SECTION	COUNTY	TOTAL SHEETS	SHEET NO.
PLOT SCALE =	CHECKED - S.W.M.	REVISED -	373				07-04121-00-BR	SHELBY	18	5	
PLOT DATE = 4/4/2011	DATE - 02/18/10	REVISED -	COLD SPRING ROAD DISTRICT				CONTRACT NO. 95656				
			FED. ROAD DIST. NO.				ILLINOIS FED. AID PROJECT BROS-1731174				