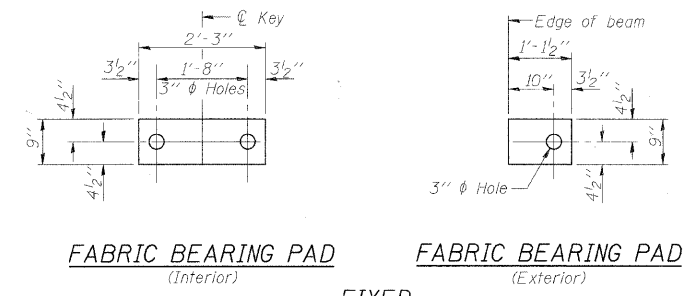


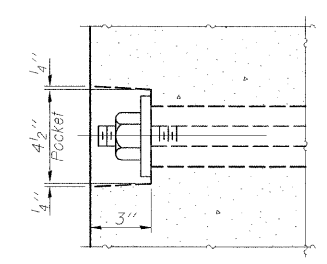
ROUTE NO.	SECTION	COUNTY	TOTAL SHEETS	SHEET NO.
TR-939	10-P4000-00-BR	MACON	21	11
FED. ROAD DIST. NO.		ILLINOIS PROJECT:		

CONTRACT NO. 95660

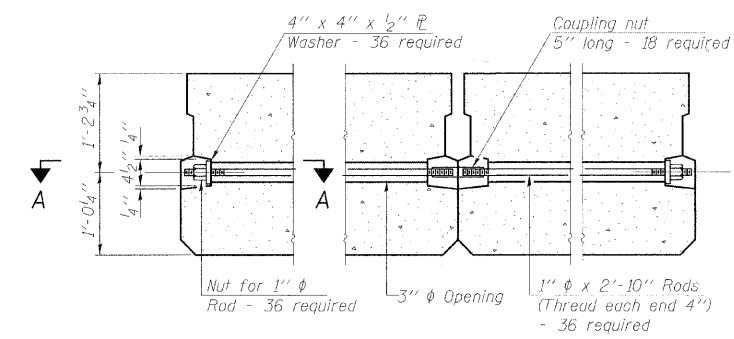


**FABRIC BEARING PAD**  
(Interior)      **FABRIC BEARING PAD**  
(Exterior)

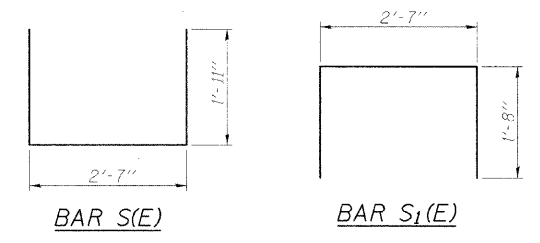
**FIXED**  
Notes:  
All bearing pads shall be 1" thick.  
Omit holes when using expansion bearings.  
Expansion bearing pad shall be bonded to the substructure.



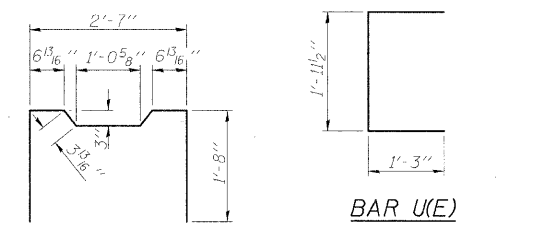
**SECTION A-A**



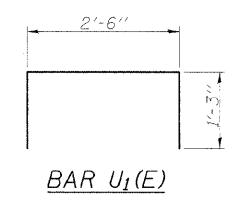
**TYPICAL TRANSVERSE TIE ASSEMBLY**  
(Hardware quantities listed include both spans)



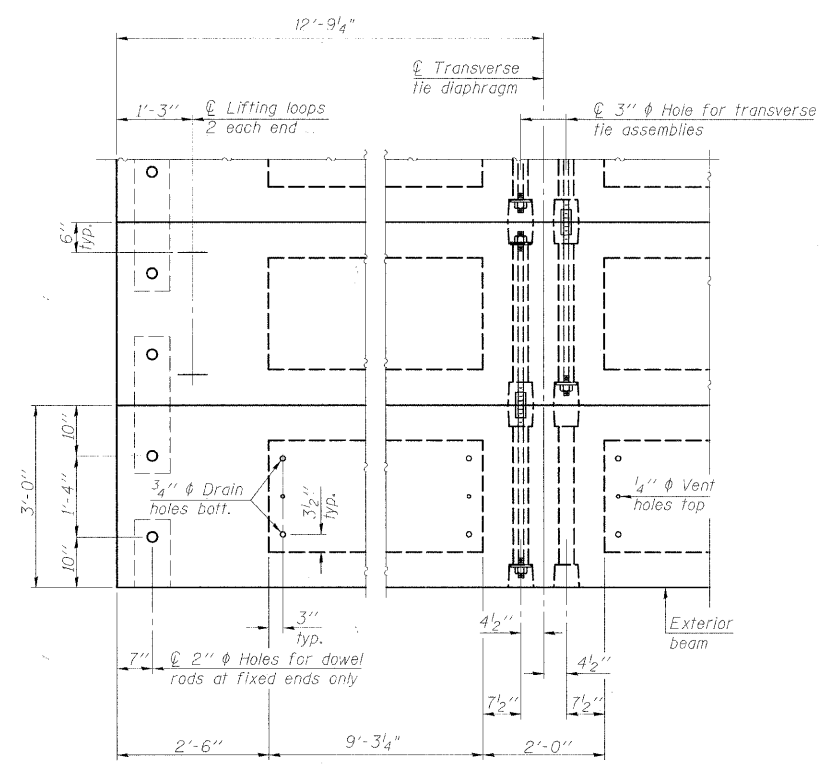
**BAR S(E)**      **BAR S1(E)**



**BAR U(E)**      **BAR S2(E)**

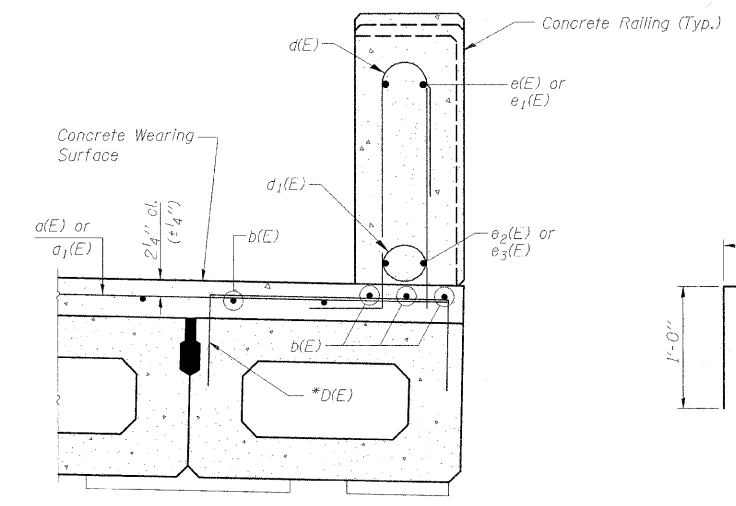


**BAR U1(E)**



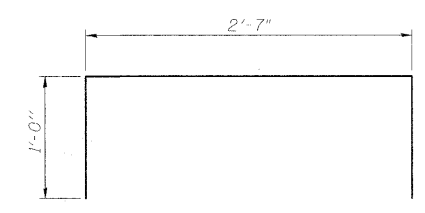
**PLAN VIEW**

Note: Connect beams in pairs with the transverse tie configuration shown.

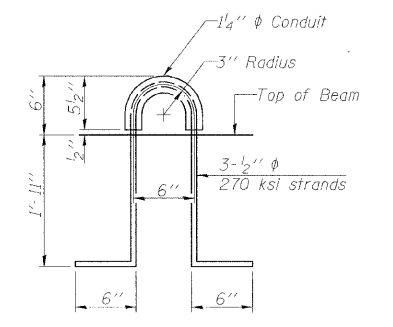


**SECTION THRU CONCRETE RAILING**

\* Place #4 D(E) bars at 9" cts. in fascia beams. D(E) bar included in cast of beam.



**BAR D(E)**



**LIFTING LOOP DETAIL**

**BILL OF MATERIAL**

Precast Prestressed Conc. Deck Bms. (27" depth)	Sq. Ft.	1532.5
---	---------	--------

**27" x 36" PPC DECK BEAM DETAILS  
STRUCTURE NO. 058-9201**

**NOTES**

Pressing steel shall be uncoated high strength, low relaxation 7-wire strand, Grade 270. The nominal diameter shall be 1/2" and the nominal cross-sectional area shall be 0.153 sq. in. The 1" phi rods in the transverse tie assembly shall be tightened to a snug fit and the threads set. Pockets on exterior faces of bridge shall be filled with grout after transverse tie assembly is in place.  
Reinforcement bars shall conform to ASTM A 706, Grade 60. (See Special Provisions).  
Two 1/8" fabric adjusting shims of the dimensions of the exterior bearing pad shall be provided for each bearing pad location.  
A minimum 2 1/2" phi lifting pin shall be used to engage the lifting loops during handling.  
Corrosion Inhibitor, per Article 1020.05(b)(12) and 1021.06 of the Standard Specifications, shall be used in the concrete for precast prestressed concrete deck beams.  
Compressive strength of prestressed concrete, f'c, shall be 6000 psi.  
Compressive strength of prestressed concrete at release, f'ci, shall be 5000 psi.

PPC DECK BEAM DETAILS (SPANS 1 AND 3)			Sheet No.
Date	Designed DCS	TR-939 (PARK DRIVE) OVER STEVENS CREEK SECTION 10-P4000-00-BR DECATUR PARK DISTRICT STA. 14+97.71 PROP. STR. NO. 058-9201	3
Revisions	Drawn BKN		
	Checked KWB		
	Approved KWB		
Prepared by:	<b>URS</b>		
345 East Ash Avenue Decatur, IL 62526		URS Job No. 36432943	of 13