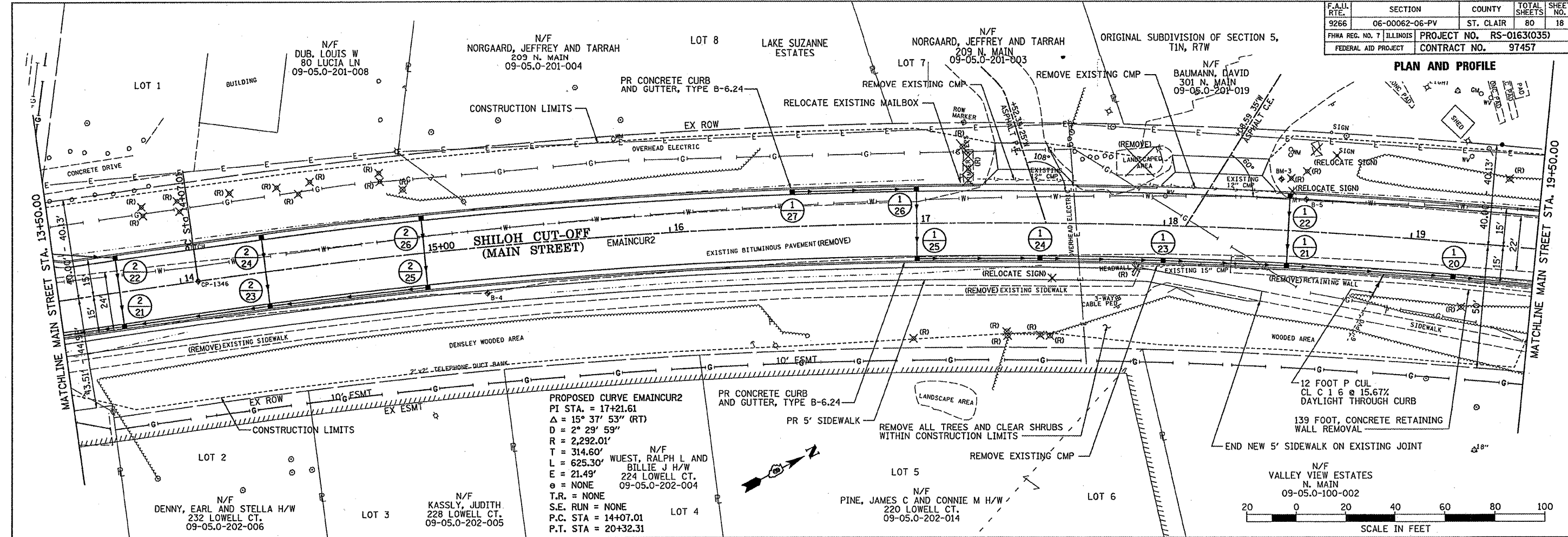
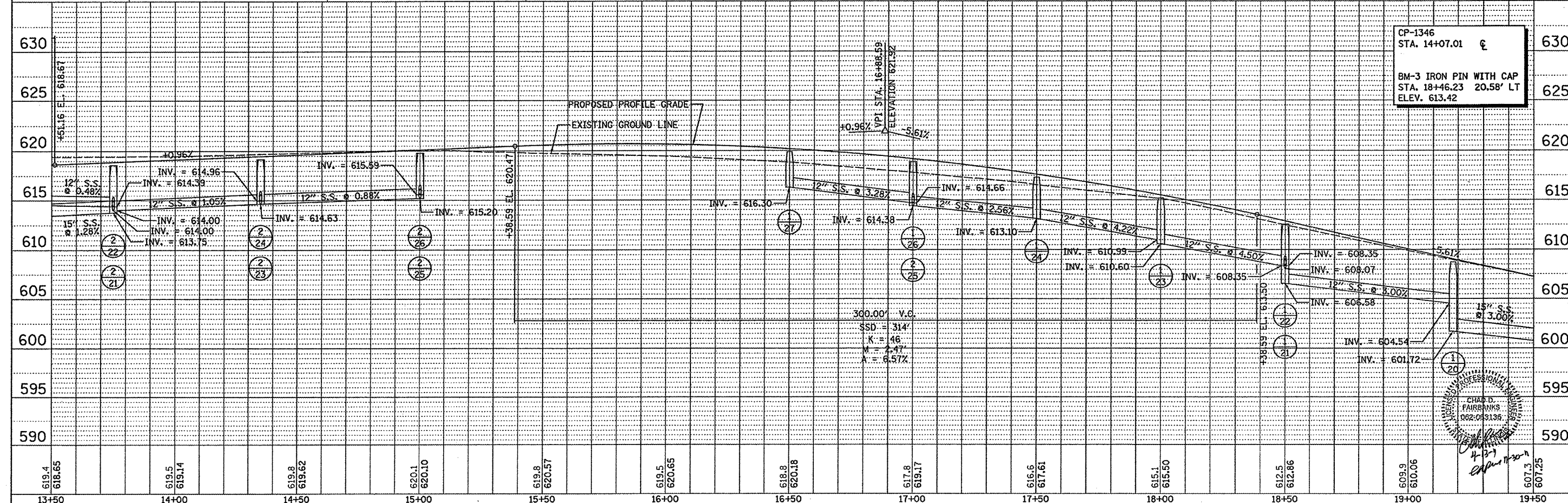
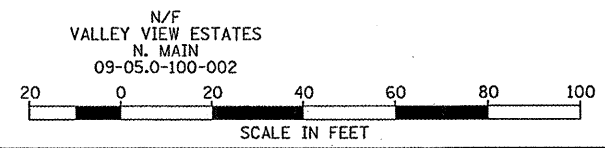


F.A.I. RTE.	SECTION	COUNTY	TOTAL SHEETS	SHEET NO.
9266	06-00062-06-PV	ST. CLAIR	80	18
FHWA REG. NO. 7	ILLINOIS	PROJECT NO.	RS-0163(035)	
FEDERAL AID PROJECT	CONTRACT NO.		97457	

PLAN AND PROFILE



PROPOSED CURVE EMAINCUR2
 PI STA. = 17+21.61
 $\Delta = 15^\circ 37' 53''$ (RT)
 $D = 2^\circ 29' 59''$
 $R = 2,292.01'$
 $T = 314.60'$
 $L = 625.30'$
 $E = 21.49'$
 $\theta = \text{NONE}$
 T.R. = NONE
 S.E. RUN = NONE
 P.C. STA. = 14+07.01
 P.T. STA. = 20+32.31



CP-1346
 STA. 14+07.01
 BM-3 IRON PIN WITH CAP
 STA. 18+46.23 20.58' LT
 ELEV. 613.42

