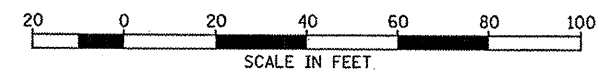
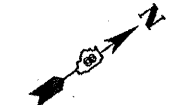


F.A.J. RTE.	SECTION	COUNTY	TOTAL SHEETS	SHEET NO.
9266	06-00062-06-PV	ST. CLAIR	80	28
FHWA REG. NO. 7 ILLINOIS	PROJECT NO. RS-0163(035)			
FEDERAL AID PROJECT	CONTRACT NO. 97457			

PLAN AND PROFILE



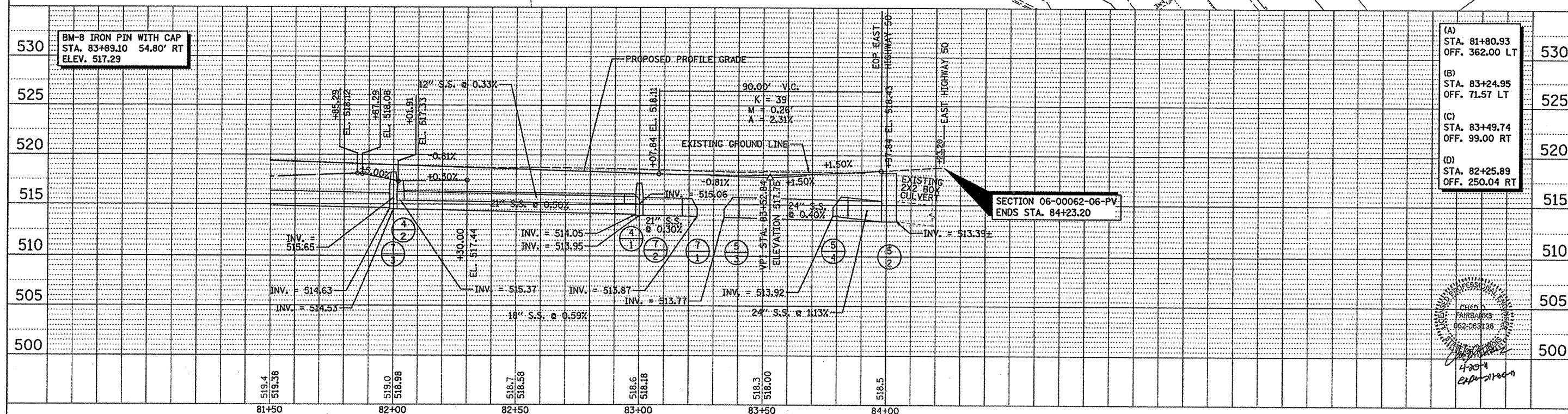
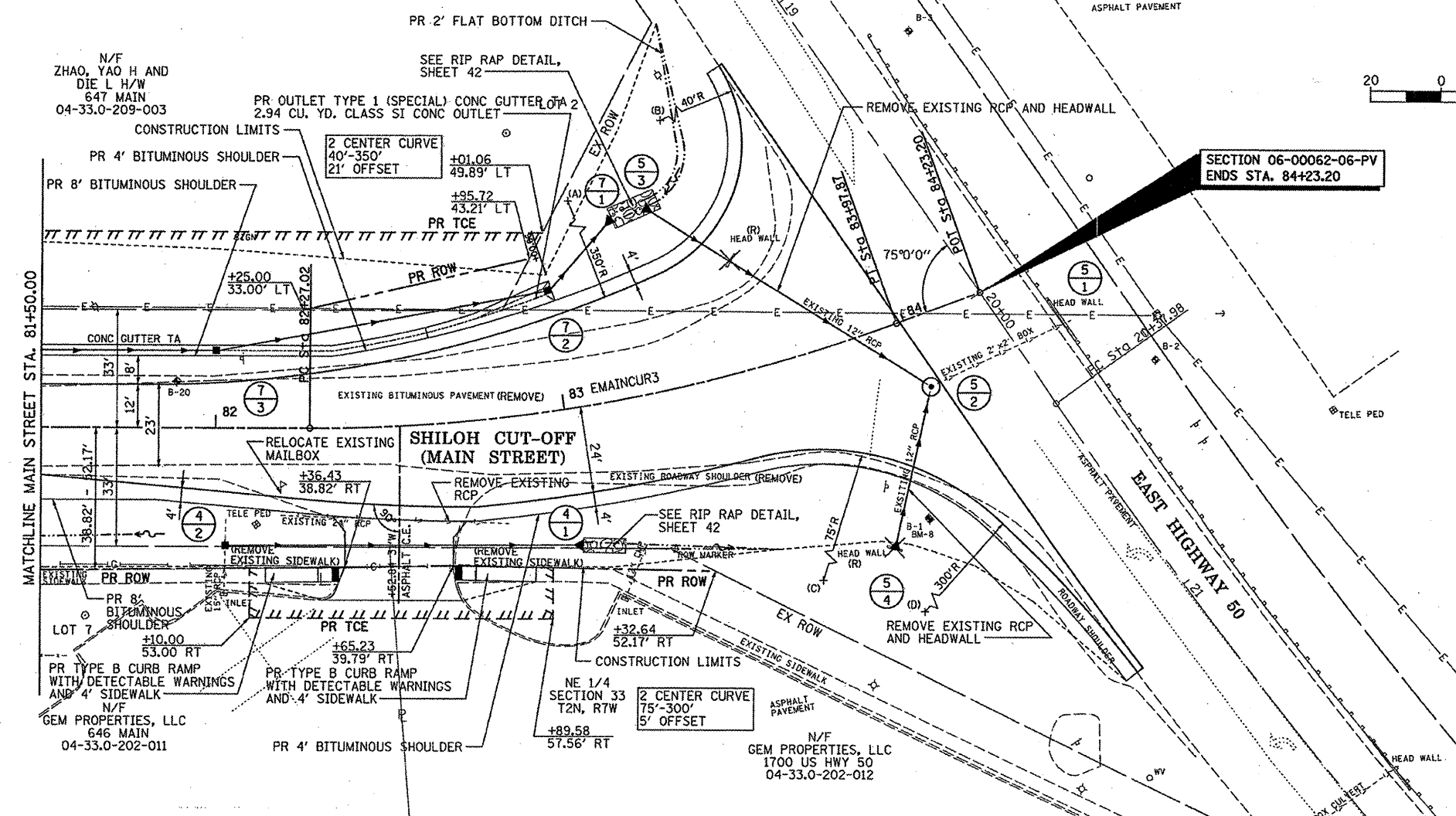
LAKEPOINTE CENTRE PROFESSIONAL PARK



N/F
DUNBAR BUILDERS
MANSON WAY
04-33.0-205-038

EXIST. CURVE E50C0R01
PI STA. = 26+08.98
 $\Delta = 33^\circ 17' 09''$ (LT)
D = 2° 59' 58"
R = 1,910.15'
T = 571.00'
L = 1,109.70'
E = 83.52'
P.C. STA. = 20+37.98
P.T. STA. = 31+47.68

PROPOSED CURVE EMAINCUR3
PI STA. = 83+13.36
 $\Delta = 20^\circ 23' 39''$ (LT)
D = 11° 56' 12"
R = 480.00'
T = 86.34'
L = 170.85'
E = 7.70'
e = NONE
T.R. = NONE
S.E. RUN = NONE
P.C. STA = 82+27.02
P.T. STA = 83+97.87



(A)	STA. 81+80.93	OFF. 362.00 LT	530
(B)	STA. 83+24.95	OFF. 71.57 LT	525
(C)	STA. 83+49.74	OFF. 99.00 RT	520
(D)	STA. 82+25.89	OFF. 250.04 RT	515

