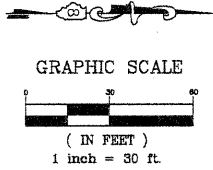


ROUTE NO.	SECTION	COUNTY	TOTAL SHEETS	SHEET NO.
T.R. 212 HAHN ROAD	10-10117-00-BR	CLINTON	16	3

CONTRACT NO. 97464

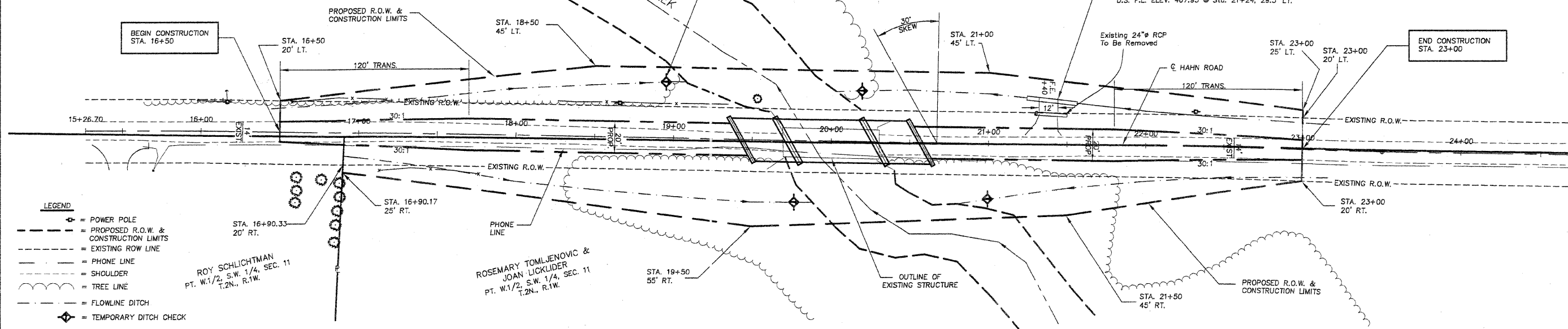


BENCHMARK 1: STA. 19+62.16, 16.64' RT. CHISELED SQUARE IN TOP OF WINGWALL ELEV. = 474.44

BENCHMARK 2: STA. 21+30.12, 18.96' LT. CHISELED SQUARE IN TOP OF HEADWALL ELEV. = 470.87

JAMES P. & JOYCE JENSEN
MID. PT. S.E. 1/4, SEC. 110
T.2N., R.1W.

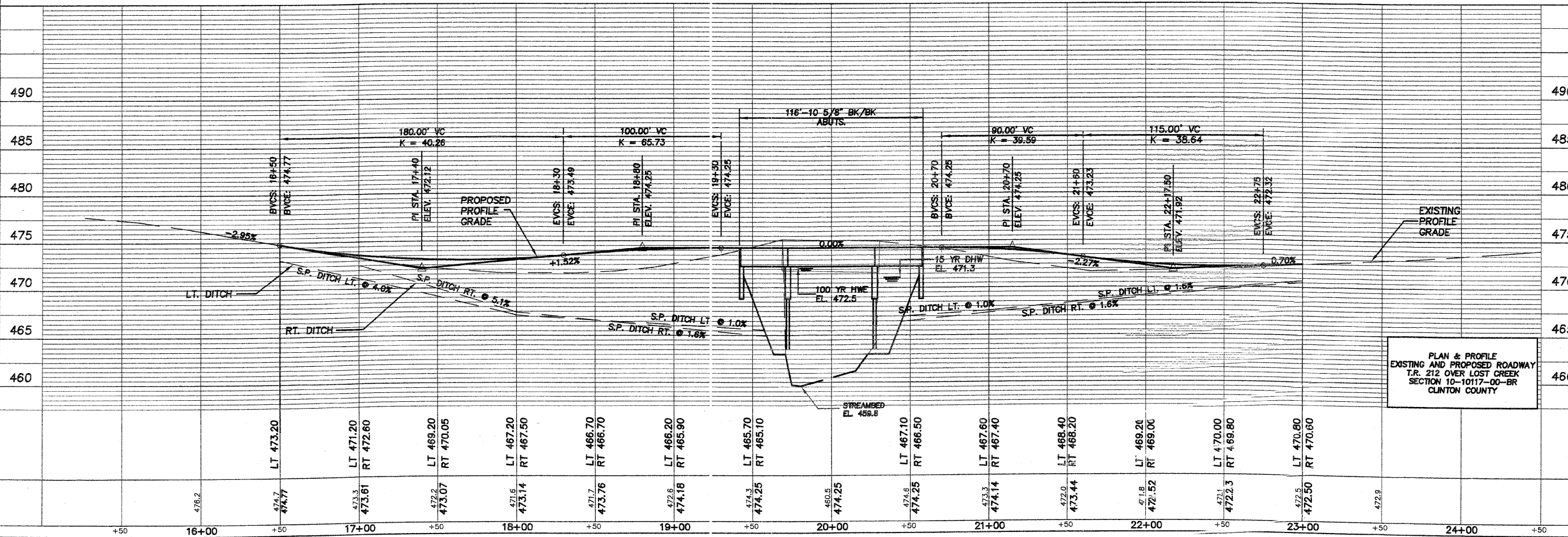
Pipe Culvert TYPE 1 RCP & End Sections (By Others)
30" x 32 LIN. FT. @ 1.6%
U.S. F.L. ELEV. 468.44 @ Sta. 21+56, 26.2' LT.
D.S. F.L. ELEV. 467.93 @ Sta. 21+24, 29.3' LT.



- LEGEND**
- ⊕ = POWER POLE
 - - - = PROPOSED R.O.W. & CONSTRUCTION LIMITS
 - - - = EXISTING ROW LINE
 - - - = PHONE LINE
 - - - = SHOULDER
 - ~~~~~ = TREE LINE
 - - - = FLOWLINE DITCH
 - ⬠ = TEMPORARY DITCH CHECK

DATE	BY	REVISION

DATE	BY	REVISION



PLAN & PROFILE
EXISTING AND PROPOSED ROADWAY
T.R. 212 OVER LOST CREEK
SECTION 10-10117-00-BR
CLINTON COUNTY