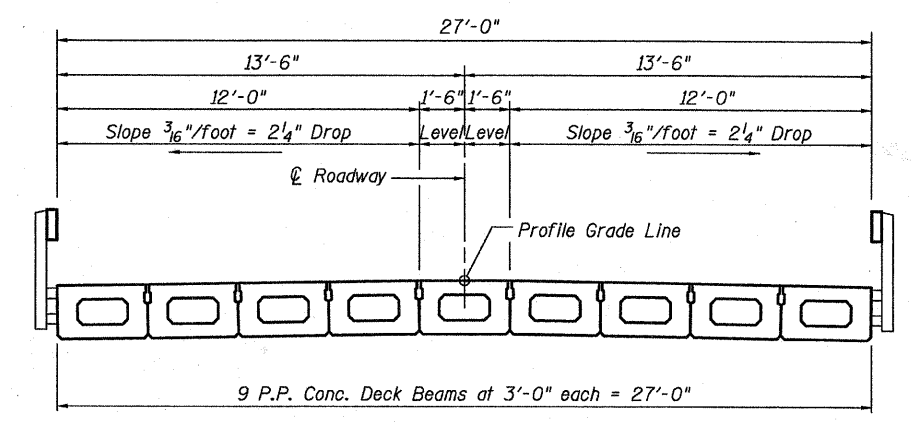
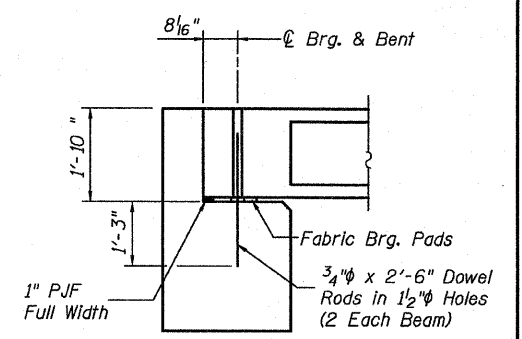


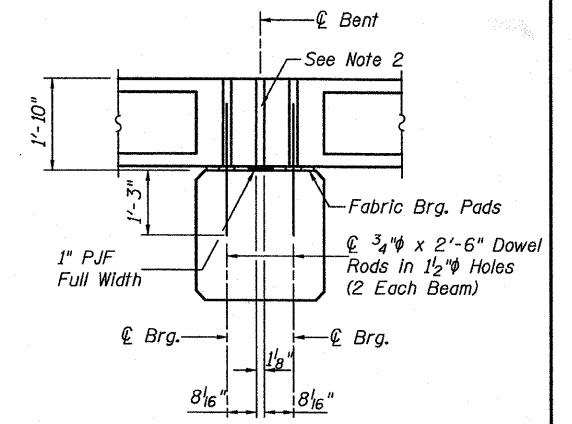
**TYPICAL ELEVATION**



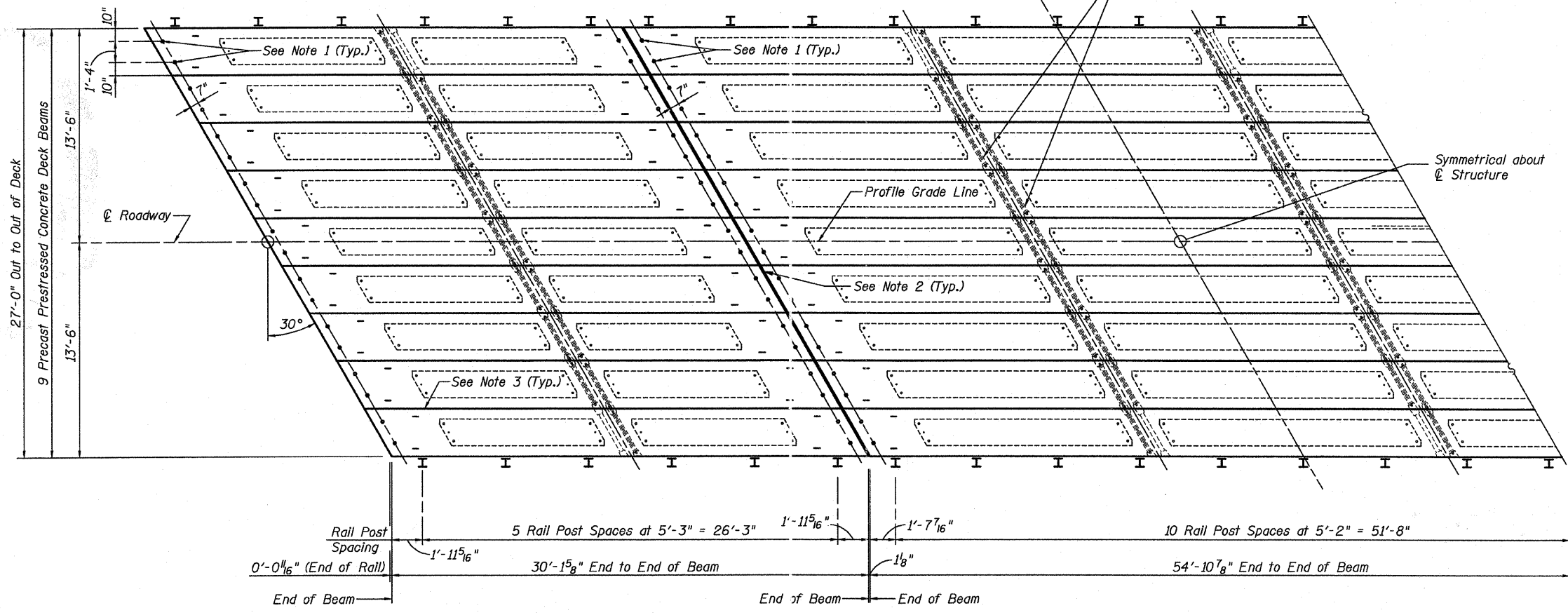
**CROSS SECTION**



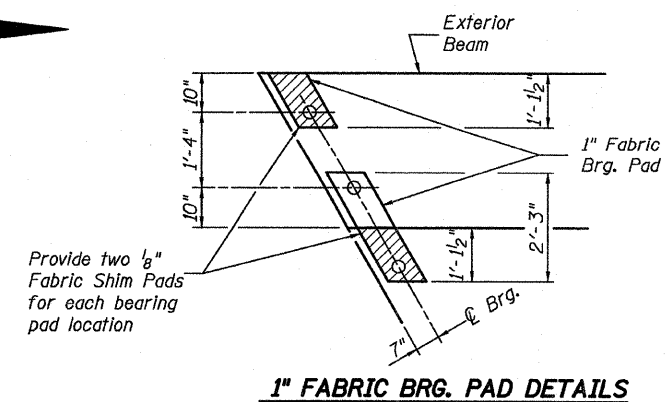
**SECTION AT ABUTS.**  
(Along <math>\text{C}</math> Beams)



**SECTION AT PIERS**  
(Along <math>\text{C}</math> Beams)



**PLAN** N



**1" FABRIC BRG. PAD DETAILS**

**NOTES**

1. After beams have been erected, holes shall be drilled into substructure and anchor dowels placed. Dowel holes shall be filled with non-shrink grout to top of beam and allowed to cure min. 24 hrs. prior to grouting the shear keys.
2. Nominal 1" joint at <math>\text{C}</math> Pier shall be filled with non-shrink grout.
3. Longitudinal keys shall be grouted.

FILE NAME = h:\6466\0144857-02-sstr.dgn	USER NAME = _USERDESCR_	DESIGNED - K.M.M.	REVISED -	<b>STATE OF ILLINOIS DEPARTMENT OF TRANSPORTATION</b>	<b>P.P.C. DECK BEAM SUPERSTRUCTURE</b>	T.R.	SECTION	COUNTY	TOTAL SHEETS	SHEET NO.
	PLOT SCALE = 4.0000 Ft / IN.	CHECKED - L.D.G.	REVISED -			212	10-10117-00-BR	CLINTON	16	5
	PLOT DATE = 3/29/2011	DRAWN - K.H.L.	REVISED -			<b>S.N. 014-4057</b>		<b>CONTRACT NO.</b>		
		CHECKED - B.G.H.	REVISED -			SHEET NO. 2 OF 10 SHEETS		ILLINOIS FED. AID PROJECT		
HENRY MEISENHEIMER & GENDE, INC. LAKE ROAD, P.O. BOX 70 CARLYLE, ILL. 62231 (618) 594-3711 WWW.HMGENGINEERS.COM										H.M.G. INC. 6466