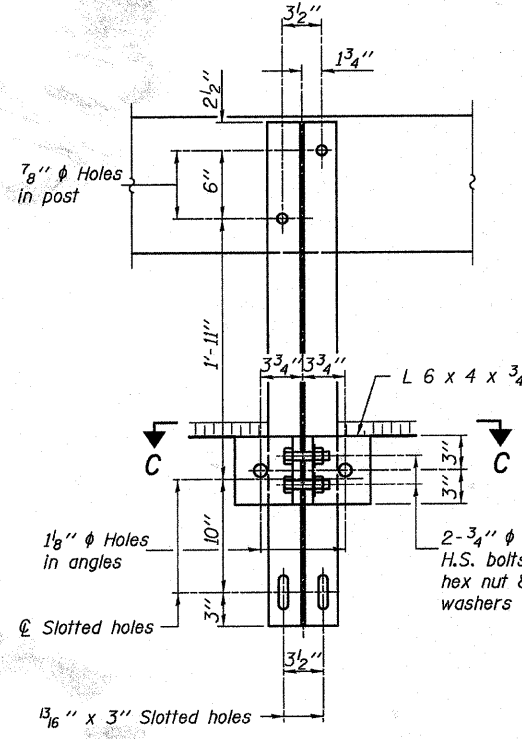
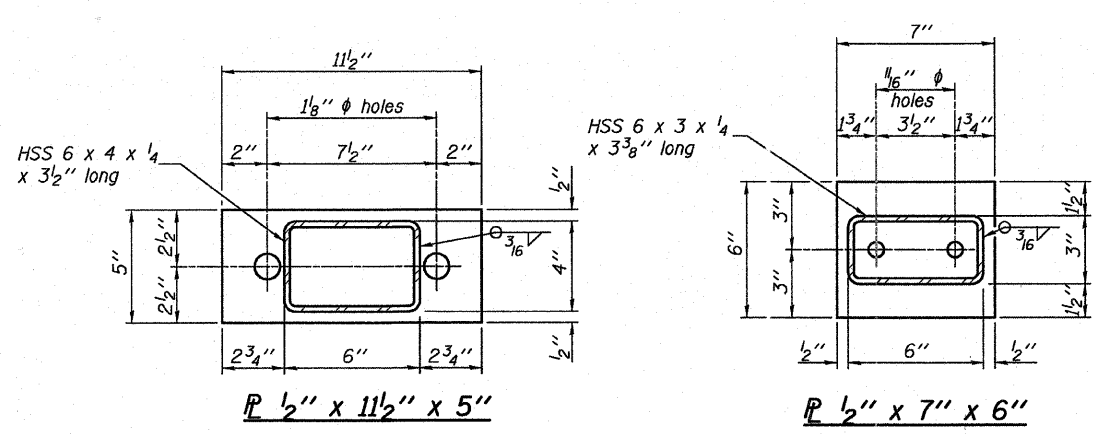
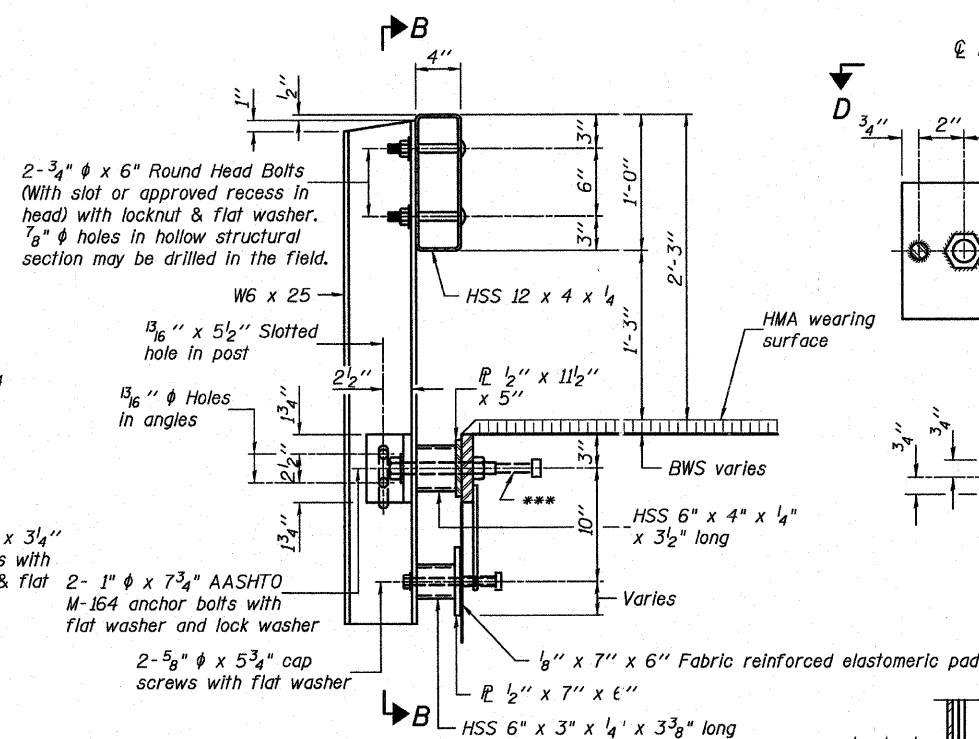


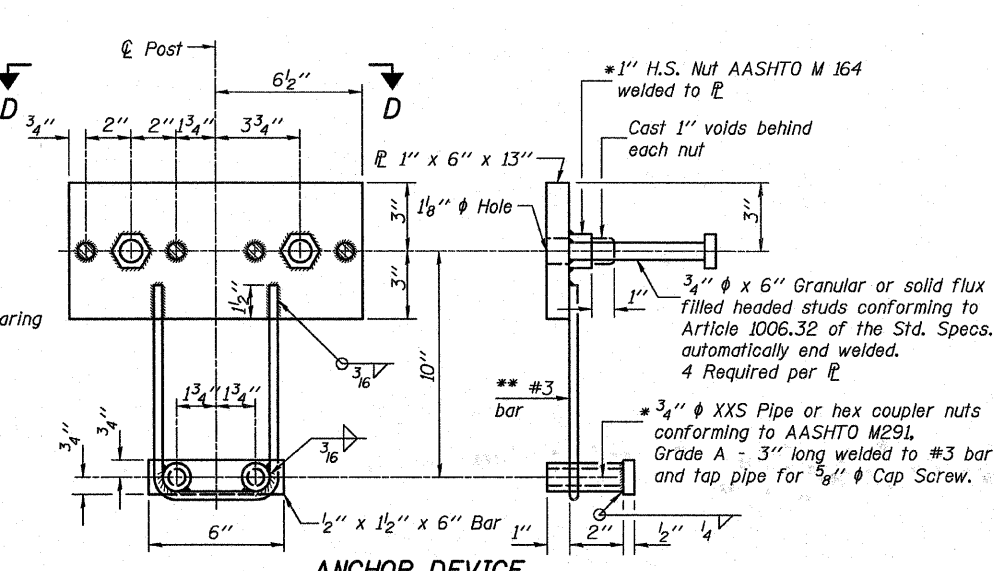
**VIEW A-A
ROUND HEAD BOLT**



SECTION B-B

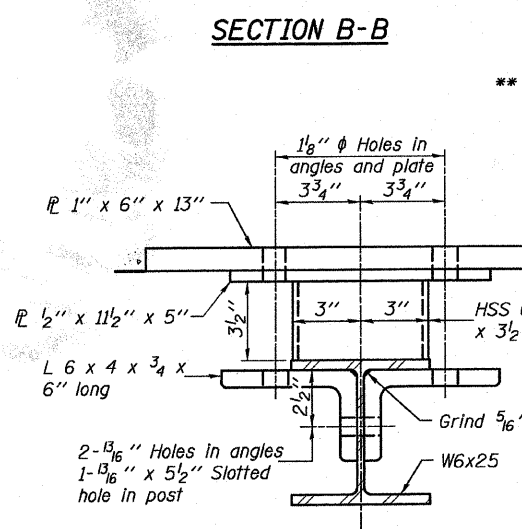


SECTION AT RAILING POST

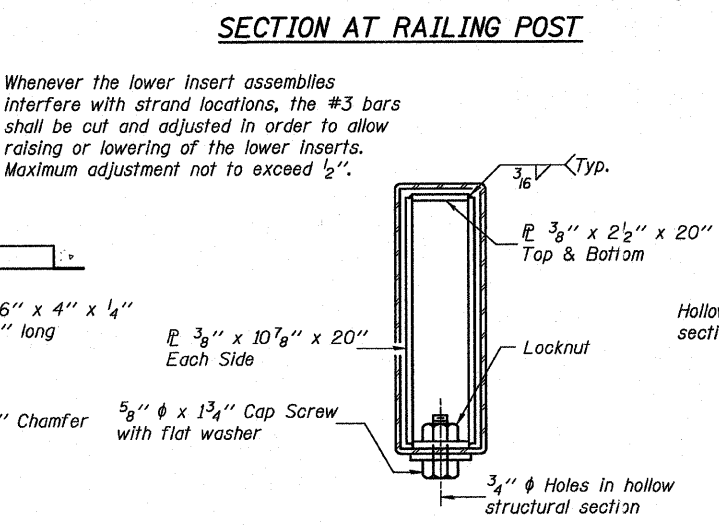


ANCHOR DEVICE

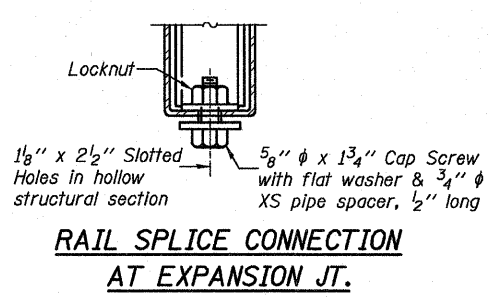
Notes:
 All field drilled holes shall be coated with an approved zinc rich paint before erection. For multi-span bridges, sufficient 1/4\"/>



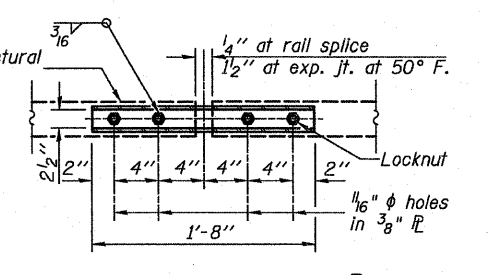
SECTION C-C



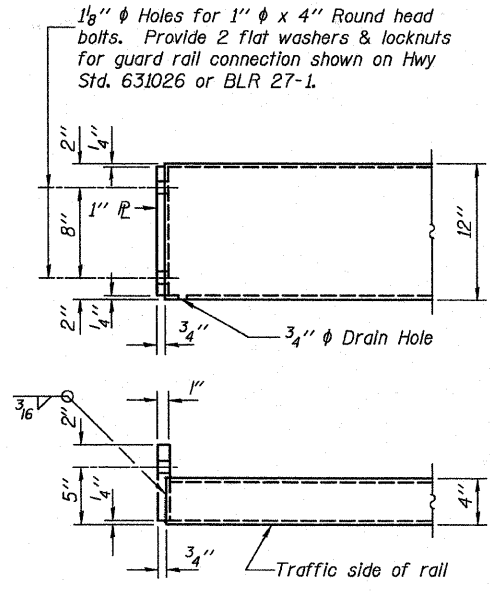
SECTIONS AT RAIL SPLICE



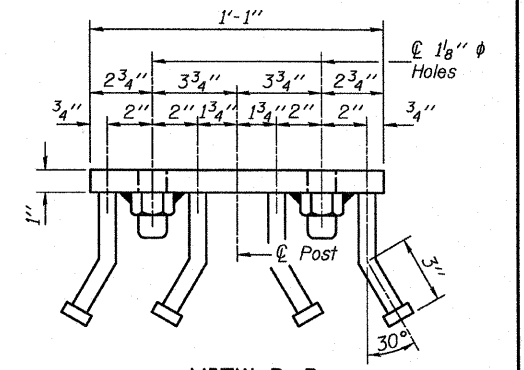
**RAIL SPLICE CONNECTION
AT EXPANSION JT.**



**PLAN-BOTT. SPLICE P
TYPICAL**



END OF RAIL DETAILS



VIEW D-D

BILL OF MATERIAL

Item	Unit	Quantity
Steel Railing, Type S-1	Foot	234

R-23A 7-1-10 (10'-9" Maximum Post Spacing)

FILE NAME = h:\6466\0144057-08-1.rtd.dgn

USER NAME = _USERDESCR_

DESIGNED - K.M.M.
 CHECKED - L.D.G.
 DRAWN - K.H.L.
 CHECKED - B.G.H.

REVISED -
 REVISED -
 REVISED -
 REVISED -

**STATE OF ILLINOIS
DEPARTMENT OF TRANSPORTATION**

STEEL RAILING, TYPE S-1

SHEET NO. 8 OF 10 SHEETS

T.R.	SECTION	COUNTY	TOTAL SHEETS	SHEET NO.
212	10-10117-00-BR	CLINTON	16	11
S.N. 014-4057		CONTRACT NO.		
ILLINOIS FED. AID PROJECT				