

GENERAL NOTES

- UNDERGROUND UTILITIES HAVE BEEN PLOTTED FROM AVAILABLE INFORMATION AND THEREFORE THEIR LOCATION MUST BE CONSIDERED APPROXIMATE ONLY. THE VERIFICATION OF THE LOCATION OF ALL UNDERGROUND UTILITIES EITHER SHOWN OR NOT SHOWN ON THESE PLANS SHALL BE THE RESPONSIBILITY OF THE CONTRACTOR, AND SAID UTILITIES SHALL BE LOCATED PRIOR TO GRADING OR CONSTRUCTION OF IMPROVEMENTS.
- ALL MATERIALS DEEMED SALVAGEABLE BY THE ENGINEER SHALL REMAIN THE PROPERTY OF ST. CLAIR COUNTY. ALL OTHER MATERIALS SHALL BE DISPOSED OF BY THE CONTRACTOR, AT HIS OWN EXPENSE.
- THE FOLLOWING ITEMS AND ESTIMATED QUANTITIES SHALL BE USED THROUGHOUT THIS PROJECT:
 0.2 ACRE, SEEDING CLASS 2; 18 POUND, NITROGEN FERTILIZER NUTRIENT; 18 POUND PHOSPHOROUS FERTILIZER NUTRIENT; 18 POUND, POTASSIUM FERTILIZER NUTRIENT; 0.2 ACRE, MULCH, METHOD 2; 23 GALLON, BITUMINOUS MATERIALS (PRIME COAT); 33 TON, HOT-MIX ASPHALT SURFACE COURSE, MIX "C", N70; 13 TON, INCIDENTAL HOT-MIX ASPHALT SURFACING.
- SEEDING DATES:
 SPRING - MARCH 1 TO JUNE 1 FALL - AUGUST 1 TO NOVEMBER 15
 SEEDING WILL NOT BE PERMITTED OUTSIDE THE LIMITS SHOWN ABOVE WITHOUT THE WRITTEN APPROVAL OF THE ENGINEER. FERTILIZER NUTRIENTS SHALL BE APPLIED AT THE RATE OF 270 POUNDS PER ACRE. THE PERCENT OF THE TOTAL WEIGHT OF THE READY MIX MATERIAL SHALL BE 33 1/3 % NITROGEN, 33 1/3 % PHOSPHORIC ACID AND 33 1/3 % WATER SOLUBLE POTASH. MULCH SHALL BE APPLIED AT THE RATE OF 2 TONS PER ACRE.
- THE FOLLOWING UTILITY COMPANIES MAY HAVE FACILITIES LOCATED WITHIN THE LIMITS OF CONSTRUCTION.
 CASEYVILLE WATER DEPARTMENT
 909 SOUTH MAIN ST.
 CASEYVILLE, IL 62232
 (618) 344-1234
- THE FOLLOWING FACTORS WERE USED TO DETERMINE THE REQUIRED AMOUNT OF MATERIALS NEEDED.
 BITUMINOUS MATERIALS (PRIME COAT) ON AGGREGATE BASE 0.375 GAL/SQ YD
 HOT MIX ASPHALT SURFACE COURSE, MIX "C", N70 112 LBS/SQYD/IN
- THE CONTRACTOR SHALL NOT BE ALLOWED TO SET THE DECK BEAMS UNTIL THE STEEL RAILING HAS BEEN DELIVERED TO THE JOB SITE OR TO THE CONTRACTORS YARD. PROOF OF SUCH DELIVERY MUST BE PRESENTED TO THE ENGINEER, AT HIS REQUEST, PRIOR TO THE PLACEMENT OF THE BEAMS.
- THE FOLLOWING MIXTURE REQUIREMENTS ARE APPLICABLE FOR THIS PROJECT:

FLEXIBLE PAVEMENT STRUCTURAL DESIGN INFORMATION	
AVERAGE ESTIMATED ADT UPON COMPLETION (2011) = 914	ROADWAY CLASSIFICATION: URBAN COLLECTOR
PROPOSED MATERIALS:	
AGGREGATE BASE COURSE, TYPE A 8"	4" INCIDENTAL HOT-MIX ASPHALT SURFACING

EARTHWORK SCHEDULE

LOCATION	EARTH EXCAVATION	EXCAVATION ADJUSTED FOR SHRINKAGE (25%)	EMBANKMENT	EARTHWORK BALANCE	FURNISHED EXCAVATION
	CUBIC YARDS	CUBIC YARDS	CUBIC YARDS	CUBIC YARDS	CUBIC YARDS
STA.90+70.94 - STA.94+57.51	49	37	186	-149	149

LOCATION	BRIDGE DECK	ROAD SURFACE
MIXTURE USE	SURFACE COURSE	INCIDENTAL
AC/PG	PG 64-22	PG 64-22
RAP % (MAX)	10%	10%
DESIGN AIR VOIDS	4.0% @ Ndes=70	4.0% @ Ndes=70
MIX COMPOSITION (GRADATION MIXTURE)	IL-9.5/IL-12.5	IL-9.5/IL-12.5
FRICTION AGG.	MIXTURE C	MIXTURE C
MIXTURE WEIGHT	112.0 lb/sq yd/in	112.0 lb/sq yd/in

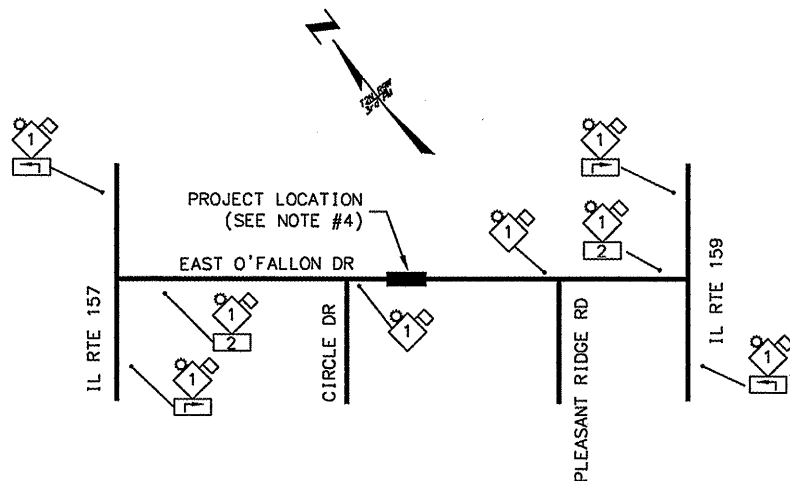
NOTES

- TYPE A FLASHING WARNING LIGHTS SHALL BE USED ON EACH ADVANCE WARNING SIGN.
- ALL ADVANCE WARNING SIGNS SHALL BE A MINIMUM OF 48"X48" AND HAVE A BLACK LEGEND ON AN ORANGE REFLECTORIZED BACKGROUND.
- ALL TYPE III BARRICADES SHALL HAVE TWO TYPE A FLASHING WARNING LIGHTS MOUNTED ON TOP OF EACH BARRICADE.
- SEE STANDARD BLR 21 FOR TRAFFIC CONTROL DETAIL AT THE BRIDGE LOCATION.

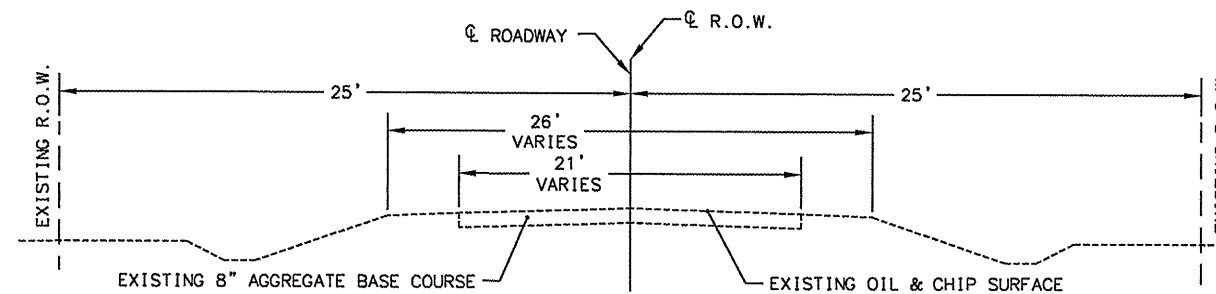
LEGEND

- ROAD CLOSED AHEAD W20-3(0)
- SUPPLEMENTAL PLATE: 2 MILE
- SUPPLEMENTAL PLATE: ARROW

TRAFFIC CONTROL PLAN

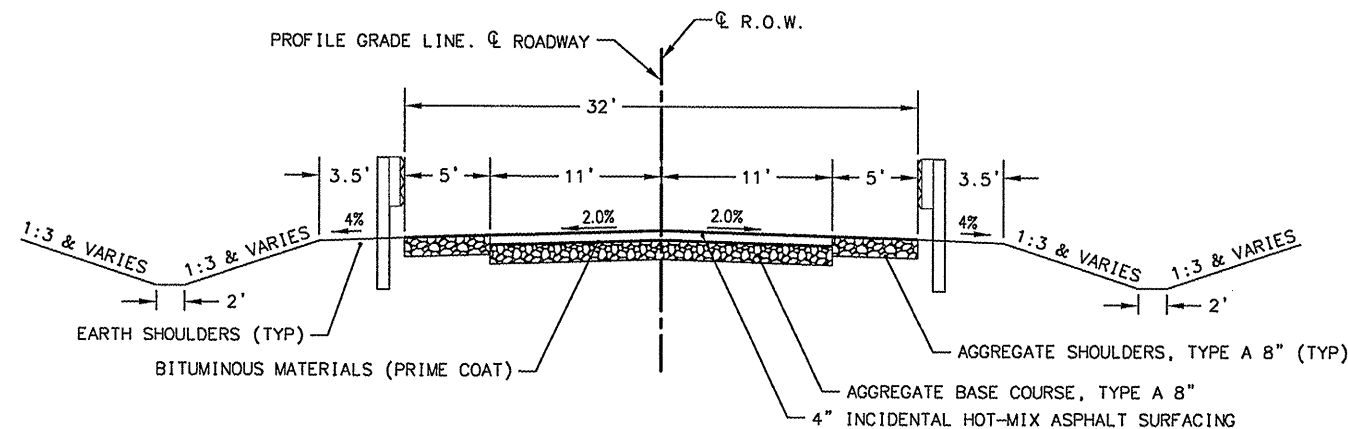


SECTION NO.	COUNTY HIGHWAY	COUNTY	SHEET OF SHEETS
06-00201-02-BR	CH 58	ST. CLAIR	2 OF 13
FHWA REG. NO. 7 ILLINOIS		PROJ: BRM-5011(309)	
GENERAL NOTES & TYP SEC		CONTRACT 97465	



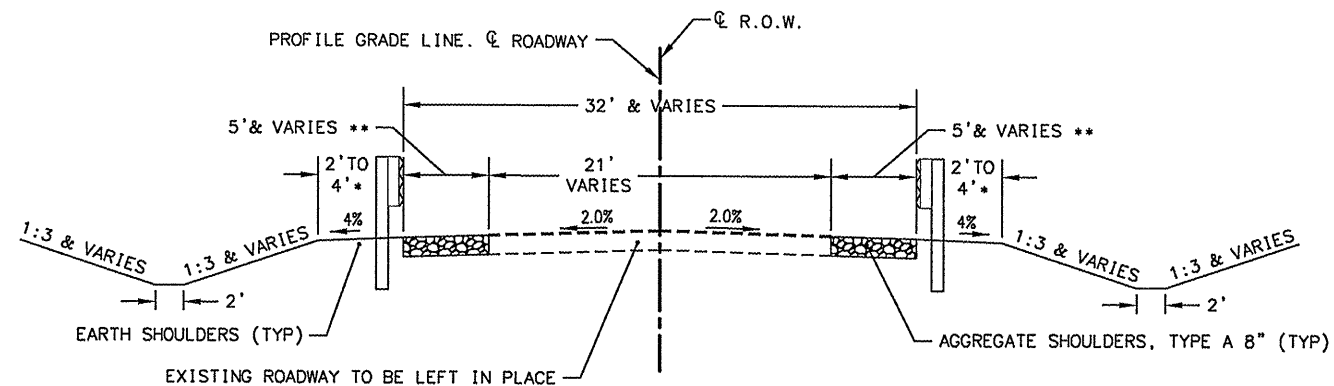
EXISTING TYPICAL SECTION

STA. 90+70.94 TO STA. 94+57.51



PROPOSED TYPICAL SECTION

STA. 92+15.01 TO STA. 92+27.06 & STA. 92+94.56 TO STA. 93+06.59



PROPOSED TYPICAL SECTION

STA. 90+70.94 TO STA. 92+15.01 & STA. 93+06.59 TO STA. 94+57.51

NOTES:

- * TRANSITION EARTH SHOULDER FROM 2' TO 4' STA 90+70.94 TO STA 91+22.10
TRANSITION EARTH SHOULDER FROM 4' TO 2' STA 93+99.50 TO STA 94+57.51
- ** TRANSITION ROCK SHOULDER FROM 0' TO 5' STA 90+70.94 TO STA 91+32.10
TRANSITION ROCK SHOULDER FROM 5' TO 0' STA 93+89.50 TO STA 94+57.51
- TRAFFIC BARRIER TERMINALS ARE LOCATED FROM STA 91+32.10 TO STA 92+27.80 AND FROM STA 92+93.80 TO STA 93+89.50

DRAWING FILE: general notes and typical sections.dwg

	INITIALS	DATE
DESIGNED	WES	11/10
CHECKED		
DRAWN	WES	11/10
CHECKED		
PREPARED BY ST. CLAIR COUNTY		