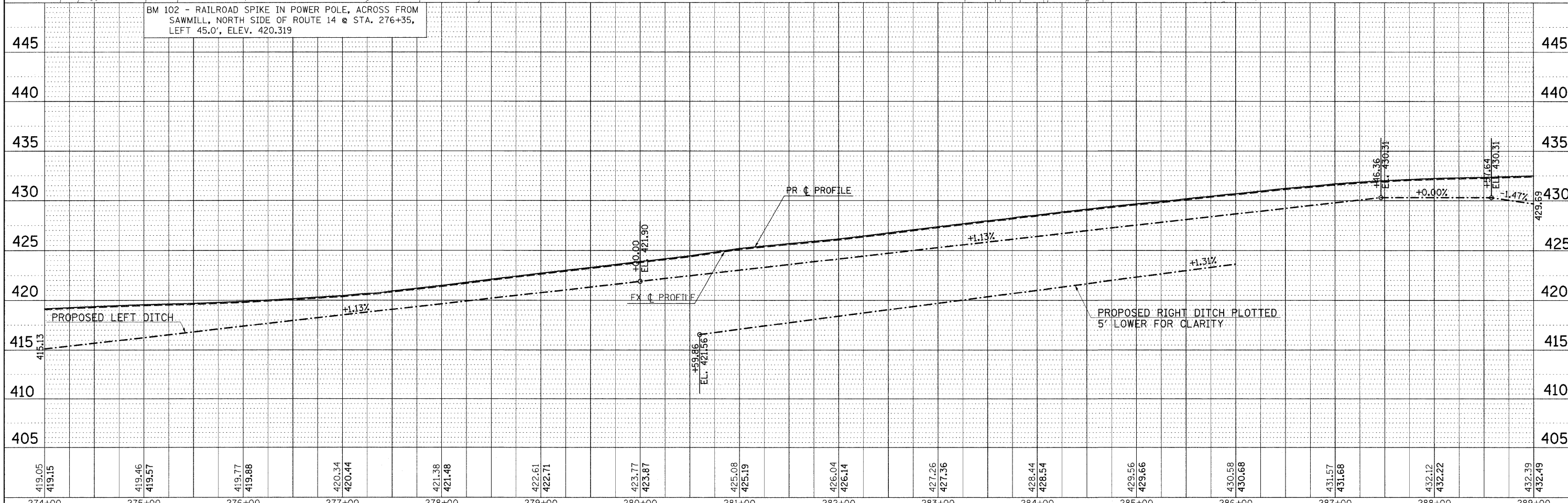
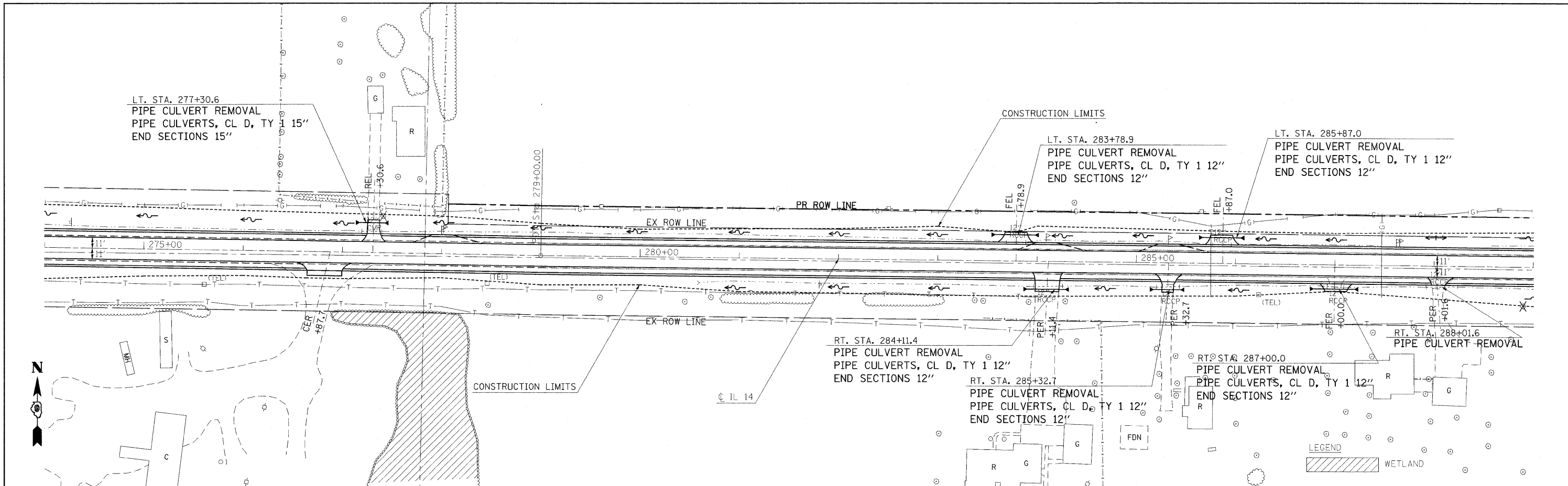


PLAN	DATE
NO.	
BY	
DATE	
REVISIONS	
NO.	
DATE	
BY	
DATE	

PROF. FILE	DATE
NO.	
BY	
DATE	
REVISIONS	
NO.	
DATE	
BY	
DATE	



BM 102 - RAILROAD SPIKE IN POWER POLE, ACROSS FROM SAWMILL, NORTH SIDE OF ROUTE 14 @ STA. 276+35, LEFT 45.0', ELEV. 420.319

419.05	419.15	419.46	419.57	419.77	419.88	420.34	420.44	421.38	421.48	422.61	422.71	423.77	423.87	425.08	425.19	426.04	426.14	427.26	427.36	428.44	428.54	429.56	429.66	430.58	430.68	431.57	431.68	432.12	432.22	432.39	432.49		
274+00	275+00	276+00	277+00	278+00	279+00	280+00	281+00	282+00	283+00	284+00	285+00	286+00	287+00	288+00	289+00																		

FILE NAME =
\$FILEL\$

USER NAME = #USER#
PLOT SCALE = #SCALE#
PLOT DATE = #DATE#

DESIGNED -
DRAWN -
CHECKED -
DATE -

REVISED -
REVISED -
REVISED -
REVISED -

**STATE OF ILLINOIS
DEPARTMENT OF TRANSPORTATION**

IL ROUTE 14 PLAN & PROFILE SHEET

SCALE: 50 SHEET NO. OF SHEETS STA. 274+00 TO STA. 289+00

F.A.P. RTE.	SECTION	COUNTY	TOTAL SHEETS	SHEET NO.
869	(1-1,1,3,6)R-1,RS-3(1,3,6)B-2		299	35
CONTRACT NO. 98797				
FED. ROAD DIST. NO. ILLINOIS FED. AID PROJECT				

* FRANKLIN & PERRY COUNTIES