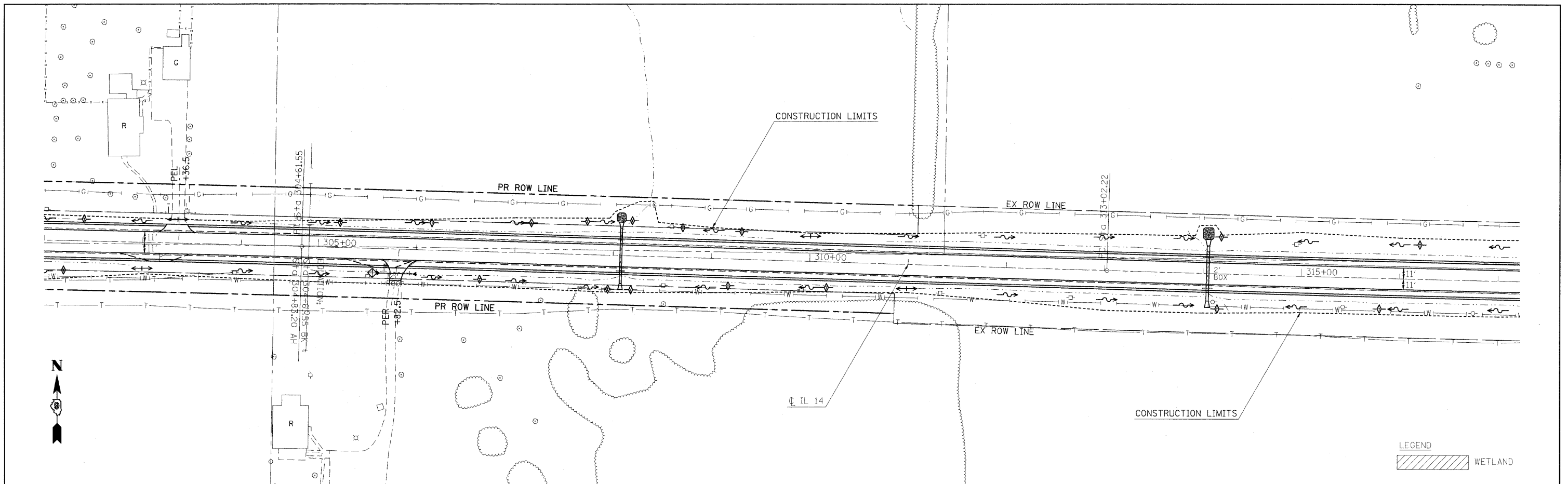


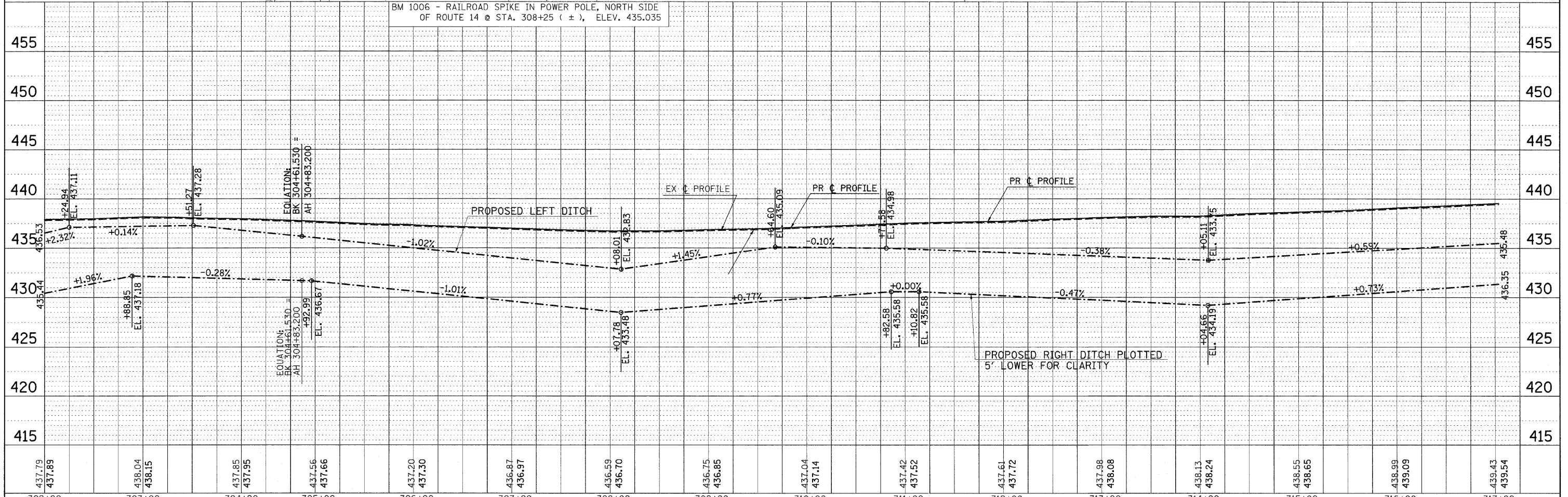
PLAN
 SURVEYED
 PLOTTED
 NOTE BOOK NO.
 ALIGNMENT CHECKED
 STRUCTURE NOTATIONS CHKD
 DATE

PROFILE
 SURVEYED
 PLOTTED
 NOTE BOOK NO.
 GRADES CHECKED
 STRUCTURE NOTATIONS CHKD
 DATE



LEGEND
 WETLAND

BM 1006 - RAILROAD SPIKE IN POWER POLE, NORTH SIDE OF ROUTE 14 @ STA. 308+25 (±), ELEV. 435.035



437.79	437.89	438.04	438.15	437.85	437.95	437.56	437.66	437.20	437.30	436.87	436.97	436.59	436.70	436.75	436.85	437.04	437.14	437.42	437.52	437.61	437.72	437.98	438.08	438.13	438.24	438.55	438.65	438.99	439.09	439.43	439.54
302+00	303+00	304+00	305+00	306+00	307+00	308+00	309+00	310+00	311+00	312+00	313+00	314+00	315+00	316+00	317+00																

FILE NAME =	USER NAME = #USER#	DESIGNED -	REVISED -	STATE OF ILLINOIS DEPARTMENT OF TRANSPORTATION	IL ROUTE 14 EROSION CONTROL SHEET	F.A.P. RTE.	SECTION	COUNTY	TOTAL SHEETS	SHEET NO.	
#FILE#		DRAWN -	REVISED -			869	(1-1,3,6)R-1,RS-3(I,3,6)B-2		299	78	
	PLOT SCALE = #SCALE#	CHECKED -	REVISED -			CONTRACT NO. 98797					
	PLOT DATE = #DATE#	DATE -	REVISED -			FED. ROAD DIST. NO. ILLINOIS FED. AID PROJECT					

SCALE: 50 SHEET NO. OF SHEETS STA. 302+00 TO STA. 317+00

* FRANKLIN & PERRY COUNTIES