

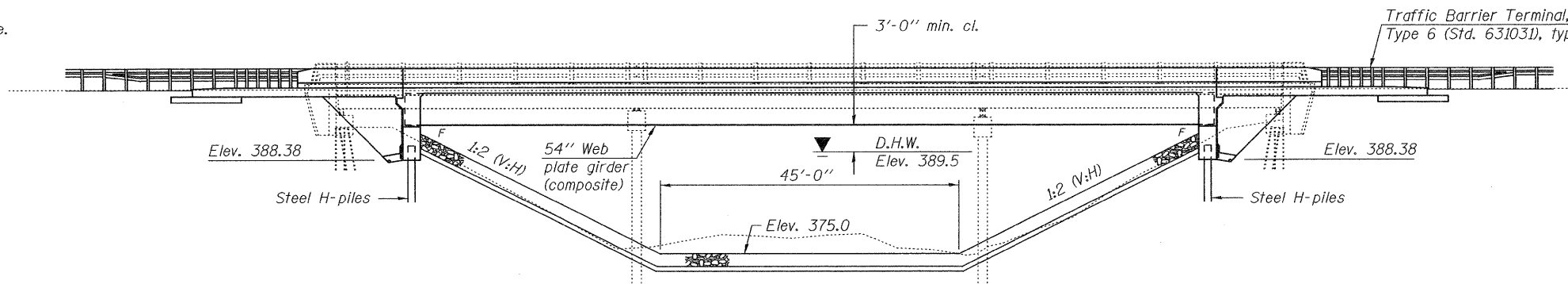
Bench Mark: Cut "□" on top of the SW corner of the SW end of a parapet extension of 073-0013, South side of Route 14 at Sta. 190+28 and 17 ft. right. Elev. 398.69

Existing structure: Struct. No. 073-0013, originally built in 1955 as S.B.I. Rt. 14, Section 2-B2. The existing structure consists of a 3 span continuous steel superstructure supported by pile bent piers and abutments. 137'-0" back to back abutments and 33'-8" out to out of deck. Structure to be removed and replaced. Traffic to be maintained utilizing stage construction.

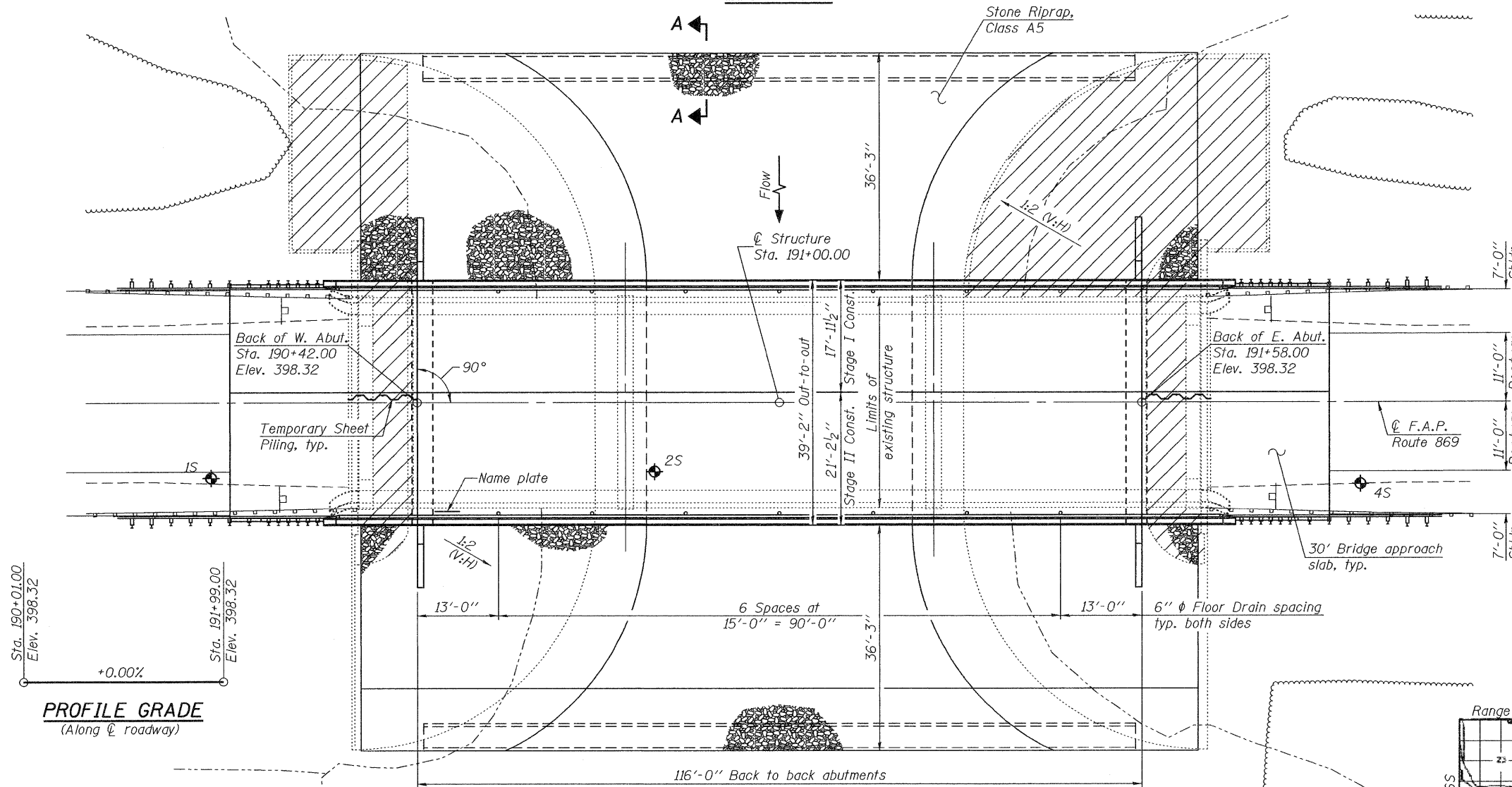
No salvage.

INDEX OF SHEETS

- 1 General Plan & Elevation
- 2 General Data
- 3 Stage Construction & Temporary Sheet Piling Details
- 4 Steel Railing (Temporary)
- 5 Temporary Concrete Barrier for Stage Construction
- 6-8 Top of Slab Elevations
- 9 Top of West Approach Slab Elevations
- 10 Top of East Approach Slab Elevations
- 11 Superstructure
- 12 Superstructure Details
- 13 Diaphragm Details
- 14-15 Bridge Approach Slab Details
- 16 Structural Steel
- 17 Structural Steel Details
- 18 West Abutment
- 19 East Abutment
- 20 HP Pile Details
- 21 Bar Splicer Assembly & Mechanical Splicer Details
- 22-24 Soil Boring Logs



ELEVATION



PLAN

Note: For Section A-A, see sheet 2 of 21.

STATION 191+00.00
BUILT 20 BY
STATE OF ILLINOIS
F.A.P. RTE. 869 SEC. 1B-2
LOADING HL-93
STRUCTURE NO. 073-0036

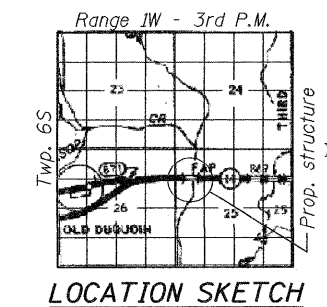
NAME PLATE
See Std. 515001

LOADING HL-93
Allow 50#/sq. ft. for future wearing surface.

SEISMIC DATA
Seismic Performance Zone (SPZ) = 3
Design Spectral Acceleration at 1.0 sec. (S_{D1}) = 0.324
Design Spectral Acceleration at 0.2 sec. (S_{D5}) = 0.755
Soil Site Class = D

DESIGN SPECIFICATIONS
2007 AASHTO LRFD Bridge Design Specifications
with 2008 and 2009 Interims

DESIGN STRESSES
FIELD UNITS
 $f_c = 3,500$ psi
 $f_y = 60,000$ psi (reinforcement)
 $f_y = 50,000$ psi (M270 Grade 50W)



LOCATION SKETCH

GENERAL PLAN & ELEVATION
ILLINOIS RTE. 14 OVER REESE CREEK
F.A.P. RTE. 869 - SEC. 1B-2
PERRY COUNTY
STATION 191+00.00
STRUCTURE NO. 073-0036



DESIGNED - <i>Michael D. Ryan</i>	EXAMINED - <i>Thomas J. ...</i>	DATE - 5/10/2011	STATE OF ILLINOIS DEPARTMENT OF TRANSPORTATION		GENERAL PLAN & ELEVATION STRUCTURE NO. 073-0036		F.A.P. RTE. 869	SECTION 1B-2	COUNTY PERRY	TOTAL SHEETS 23	SHEET NO. 05
CHECKED - <i>Jessica Forrest</i>	PASSED - <i>David Puzev</i>						SHEET NO. 1 OF 24 SHEETS		CONTRACT NO. 98797		ILLINOIS FED. AID PROJECT
DRAWN - <i>h.t. duong</i>											
CHECKED - <i>MDR/JCF</i>											