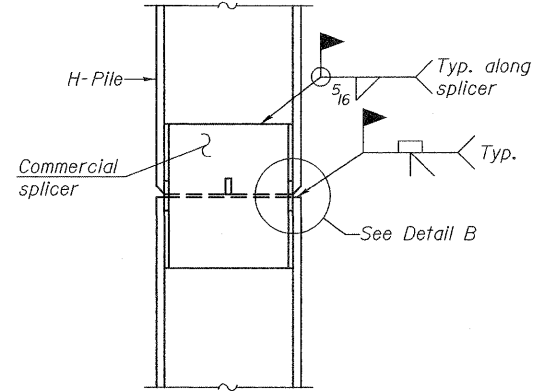
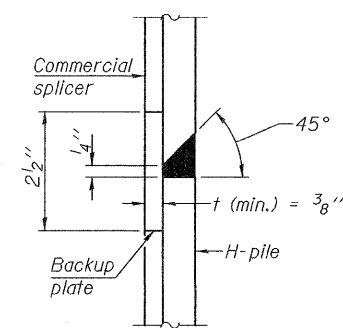


**STEEL PILE TABLE**

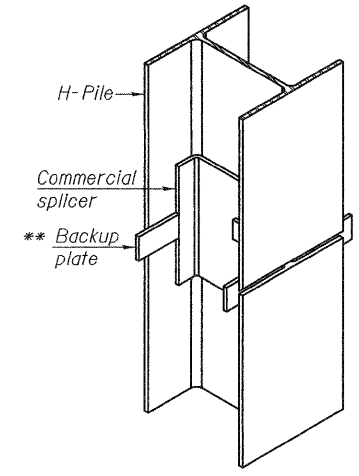
| Designation | Depth d | Flange width b <sub>f</sub> | Web and Flange thickness t | Encasement diameter A |
|-------------|---------|-----------------------------|----------------------------|-----------------------|
| HP 14x117   | 14 1/4" | 14 7/8"                     | 13/16"                     | 30"                   |
| x102        | 14"     | 14 3/4"                     | 1/16"                      | 30"                   |
| x89         | 13 7/8" | 14 3/4"                     | 5/8"                       | 30"                   |
| x73         | 13 5/8" | 14 5/8"                     | 1/2"                       | 30"                   |
| HP 12x84    | 12 1/4" | 12 1/4"                     | 1/16"                      | 24"                   |
| x74         | 12 1/8" | 12 1/4"                     | 5/8"                       | 24"                   |
| x63         | 12"     | 12 1/8"                     | 1/2"                       | 24"                   |
| x53         | 11 3/4" | 12"                         | 7/16"                      | 24"                   |
| HP 10x57    | 10"     | 10 1/4"                     | 9/16"                      | 24"                   |
| x42         | 9 3/4"  | 10 1/8"                     | 7/16"                      | 24"                   |
| HP 8x36     | 8"      | 8 1/8"                      | 7/16"                      | 18"                   |



**ELEVATION**

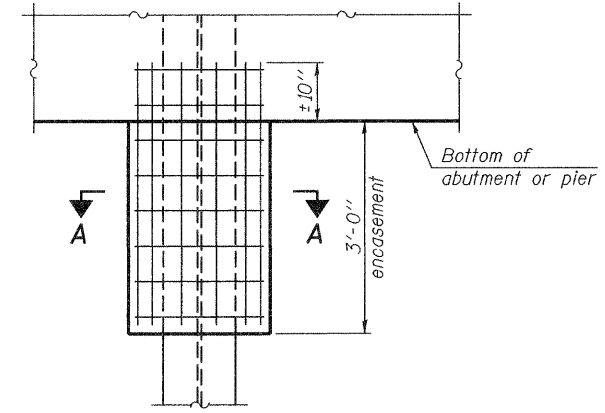


**DETAIL "B"**



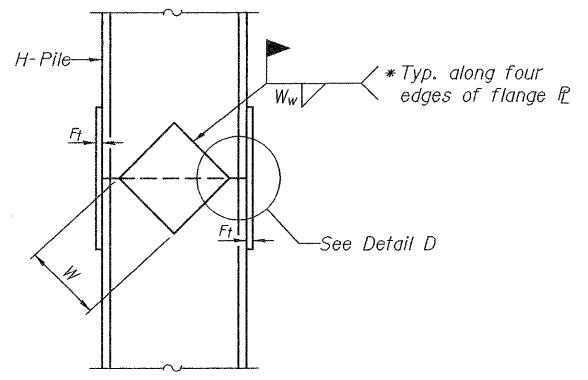
**ISOMETRIC VIEW**

**WELDED COMMERCIAL SPLICE**

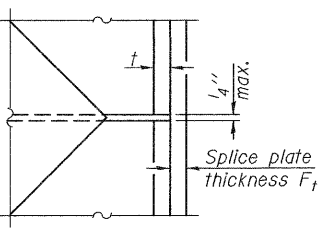


**ELEVATION**

**PILE ENCASEMENT**

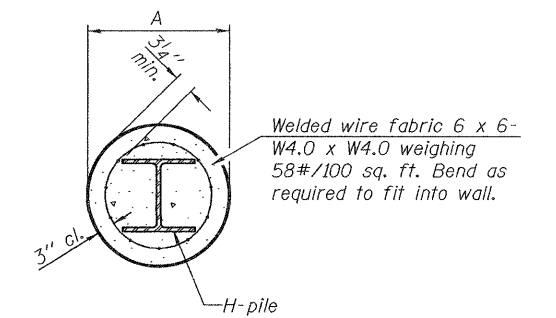


**ELEVATION**



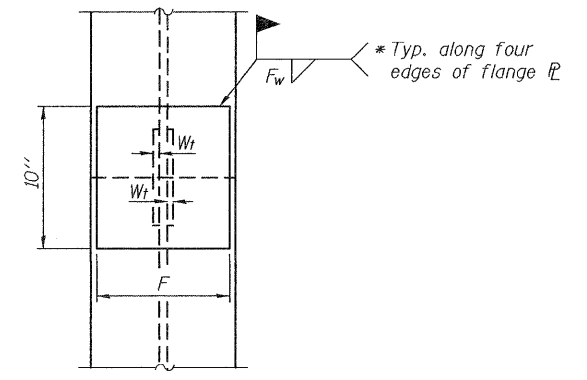
**DETAIL D**

**WELDED PLATE FIELD SPLICE**



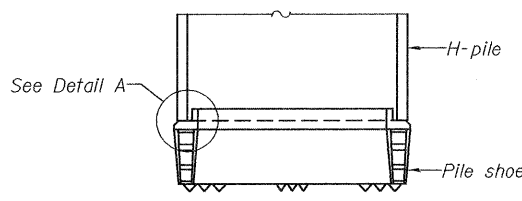
**SECTION A-A**

Note:  
Forms for encasement may be omitted when soil conditions permit.

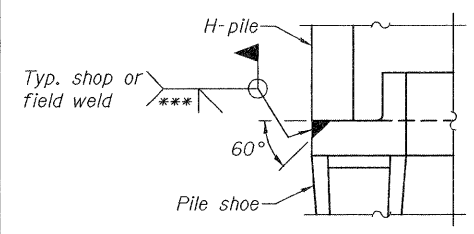


**END VIEW**

| Designation | F       | F <sub>t</sub> | F <sub>w</sub> | W      | W <sub>t</sub> | W <sub>w</sub> |
|-------------|---------|----------------|----------------|--------|----------------|----------------|
| HP 14x117   | 12 1/2" | 1"             | 7/8"           | 7 3/4" | 5/8"           | 1/2"           |
| x102        | 12 1/2" | 7/8"           | 3/4"           | 7 3/4" | 5/8"           | 1/2"           |
| x89         | 12 1/2" | 3/4"           | 1/16"          | 7 3/4" | 5/8"           | 1/2"           |
| x73         | 12 1/2" | 5/8"           | 9/16"          | 7 3/4" | 5/8"           | 1/2"           |
| HP 12x84    | 10"     | 7/8"           | 1/16"          | 6 1/2" | 5/8"           | 1/2"           |
| x74         | 10"     | 7/8"           | 1/16"          | 6 1/2" | 5/8"           | 1/2"           |
| x63         | 10"     | 5/8"           | 1/2"           | 6 1/2" | 1/2"           | 3/8"           |
| x53         | 10"     | 5/8"           | 1/2"           | 6 1/2" | 1/2"           | 3/8"           |
| HP 10x57    | 8"      | 3/4"           | 9/16"          | 5 1/4" | 1/2"           | 3/8"           |
| x42         | 8"      | 5/8"           | 9/16"          | 5 1/4" | 1/2"           | 3/8"           |
| HP 8x36     | 7"      | 5/8"           | 7/16"          | 4 1/4" | 1/2"           | 3/8"           |

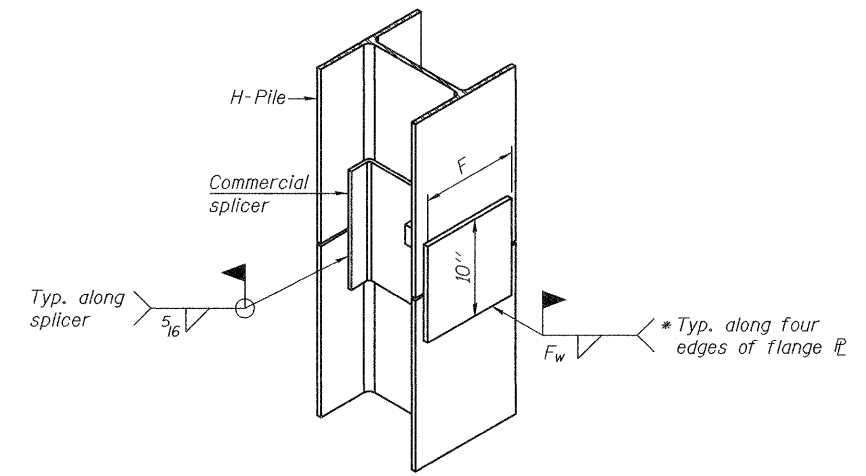


**ELEVATION**



**DETAIL A**

**H-PILE SHOE ATTACHMENT**



**ISOMETRIC VIEW**

**WELDED COMMERCIAL SPLICE ALTERNATE**

- \* Interrupt welds 1/4" from end of web and/or each flange.
- \*\* Remove portions of backup plates that extend outside the flanges.
- \*\*\* Weld size per pile shoe manufacturer (5/16" min.).

Note:  
The steel H-piles shall be according to AASHTO M270 Grade 50.

F-HP 7-1-10