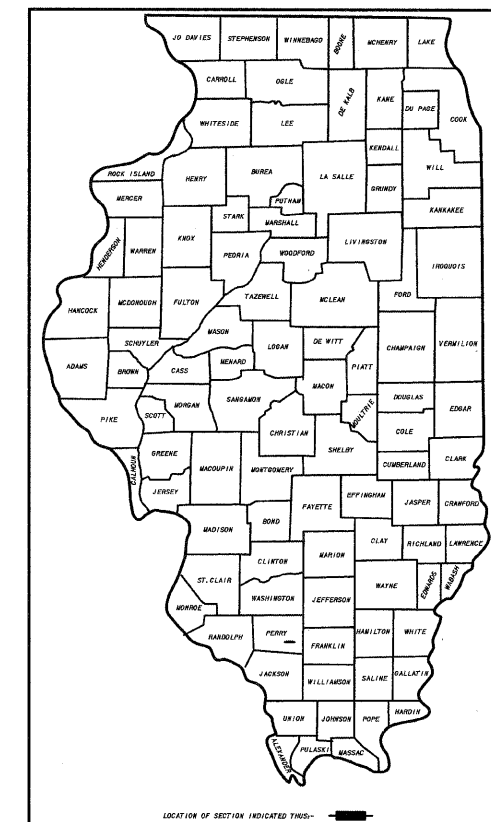


STATE OF ILLINOIS DEPARTMENT OF TRANSPORTATION DIVISION OF HIGHWAYS PLANS FOR PROPOSED FEDERAL PROJECT CITY OF DU QUOIN

SECTION 05-00047-00-RP
PROJECT NO. HPP-1207(102)
JOB NO. C-99-516-06 CONTRACT NO. 99273

INDUSTRIAL PARK DRIVE - PHASE III

SECTION	COUNTY	TOTAL SHEETS	SHEET NUMBER
05-0047-00-RP	PERRY	11	1
CITY OF DUQUOIN	PROJECT NO. HPP-1207(102)		
JOB NO. C-99-516-06	CONTRACT NO. 99273		

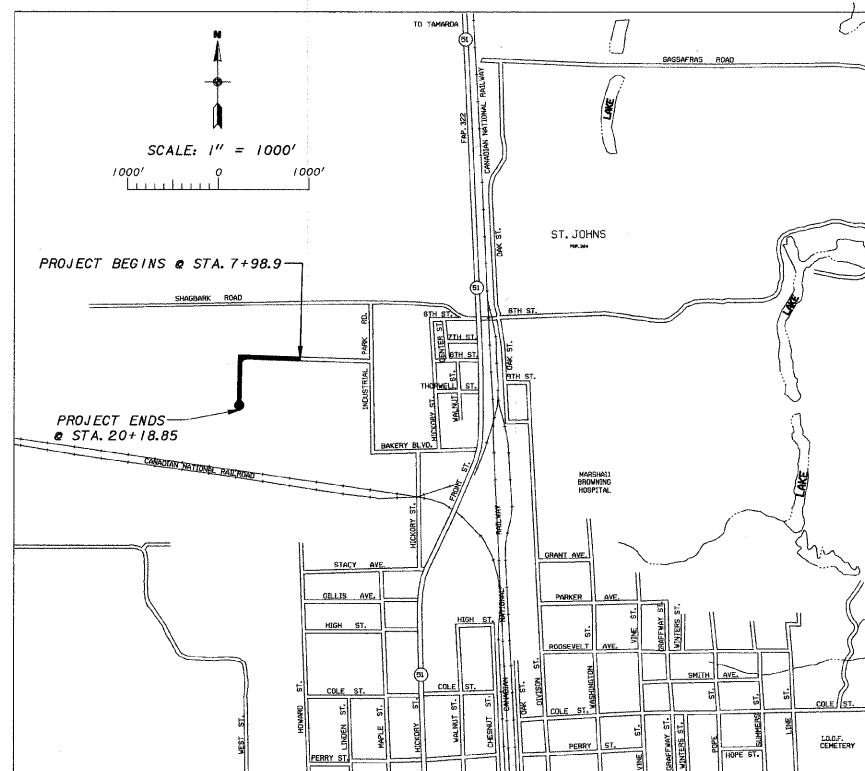


INDEX OF SHEETS

SHEET NO	DESCRIPTION
1	TITLE SHEET, INDEX OF SHEETS, LIST OF STANDARDS AND PROJECT LOCATION MAP
2	SUMMARY OF QUANTITIES, TYPICAL SECTIONS, PAVEMENT LAYOUT DETAIL FROM STA. 13+63.48 TO STA. 15+33.83, EXPANSION JOINT DETAIL- STA.7+98.9, PAVEMENT JOINT DETAIL AND STRUCTURAL DESIGN DATA
3-5	PLAN AND PROFILES
6-10	CROSS-SECTIONS
11	STORM WATER POLLUTION PREVENTION PLAN

LIST OF STANDARDS

STD.NO.	DESCRIPTION
280001-5	TEMPORARY EROSION CONTROL SYSTEMS
420001-07	PAVEMENT JOINTS
420101-04	24' (7.2m) JOINTED PCC PAVEMENT
542301-03	PRECAST REINFORCED CONCRETE FLARED END SECTION
701901-01	TRAFFIC CONTROL DEVICES
720001-01	SIGN PANEL MOUNTING DETAILS
720006-02	SIGN PANEL ERECTION DETAILS
720011-01	METAL POSTS FOR SIGNS, MARKERS & DELINEATORS
729001-01	APPLICATIONS OF TYPES A & B METAL POSTS (FOR SIGNS & MARKERS)
B.L.R. 21-8	TYPICAL APPLICATION OF TRAFFIC CONTROL DEVICES FOR CONSTRUCTION ON RURAL LOCAL HIGHWAYS



PROJECT LOCATION
NET LENGTH OF PROJECT - 1219.95 FT - 0.231 MI.

UTILITIES ON PROJECT

CITY OF DUQUOIN - WATER & SEWER
AMEREN ILLINOIS - MARION, IL. - ELECTRIC & GAS
FRONTIER - MARION, IL. - TELEPHONE
COMCAST - DUQUOIN, IL. - CABLE TV

SCALES
PLAN 1 INCH = 20 FEET
PROFILE HORIZ. 1 INCH = 20 FEET
PROFILE VERT. 1 INCH = 5 FEET
CROSS SECTIONS 1 INCH = 5 FEET HORIZ.
CROSS SECTIONS 1 INCH = 5 FEET VERT.

DESIGN SPEED 30MPH
CLASSIFICATION LOCAL ROAD (TRUCK ROUTE)
ADT 2031 <50
ADT 2011 <50
J.U.L.I.E 1-800-892-0123

APPROVED 4/7/11 2011
John Rednour
JOHN REDNOUR, MAYOR - CITY OF DUQUOIN

APPROVED 4/11/2011 2011
Dennis Hillebrenner
DENNIS HILLEBRENNER - DISTRICT 9 ENGINEER OF LOCAL ROADS & STREETS

RELEASING FOR BID 4/12 2011
BASED ON LIMITED REVIEW *Mary C. Lame*
MARY C. LAME, P.E. - DEPUTY DIRECTOR OF HIGHWAYS
REGION FIVE ENGINEER

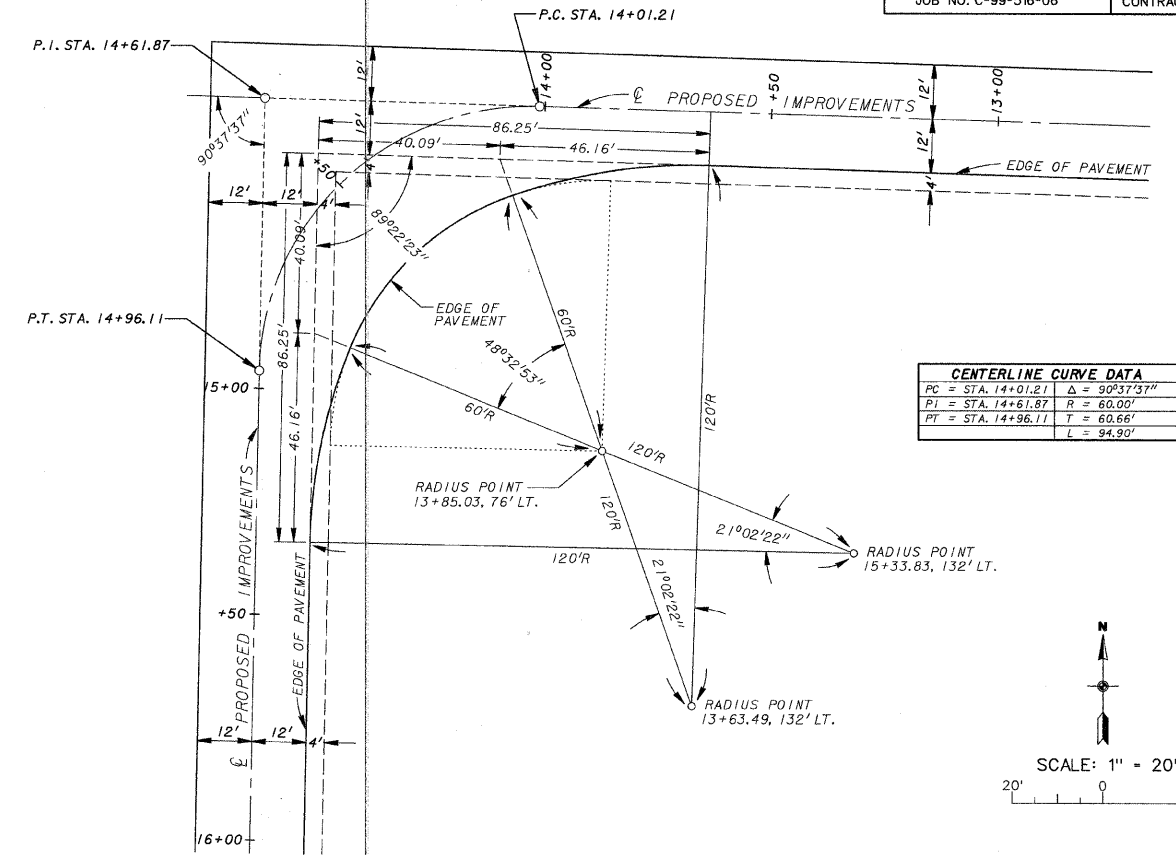
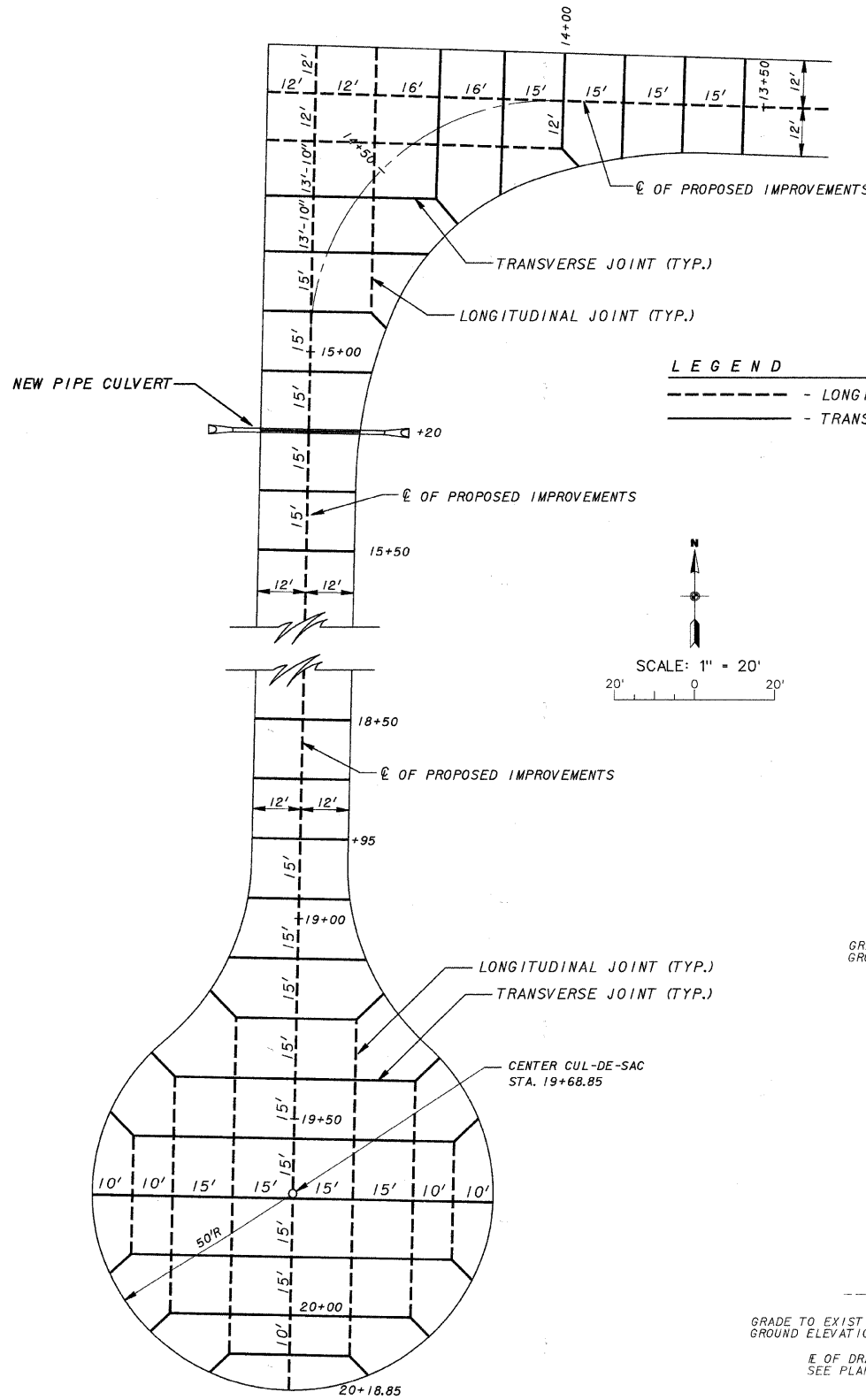
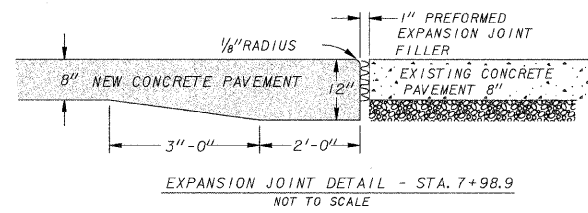


Ted R. Beggs
TED R. BEGGS, P.E.
REG. NO. 082-083738
DATE 4/12/11
EXPIRES 11-30-11

STATE OF ILLINOIS
DEPARTMENT OF TRANSPORTATION

SCALE AS SHOWN	J. T. BLANKINSHIP, INC. CONSULTING ENGINEERS & LAND SURVEYORS ILLINOIS PROFESSIONAL DESIGN FIRM NO.1394 P.O. BOX 40 401 S. 17TH STREET MURPHYSBORO, ILLINOIS 62966 PHONE 618-687-1771	FILE NO. E-8809
DATE MARCH 2011		DESIGN FILE E8809-01.dgn
DRAWN BY ASW/SDR		SHEET NO. 1 OF 11

SECTION	COUNTY	TOTAL SHEETS	SHEET NUMBER
05-0047-00-RP	PERRY	11	2
CITY OF DUQUOIN		PROJECT NO. HPP-1207(102)	
JOB NO. C-99-516-06		CONTRACT NO. 99273	

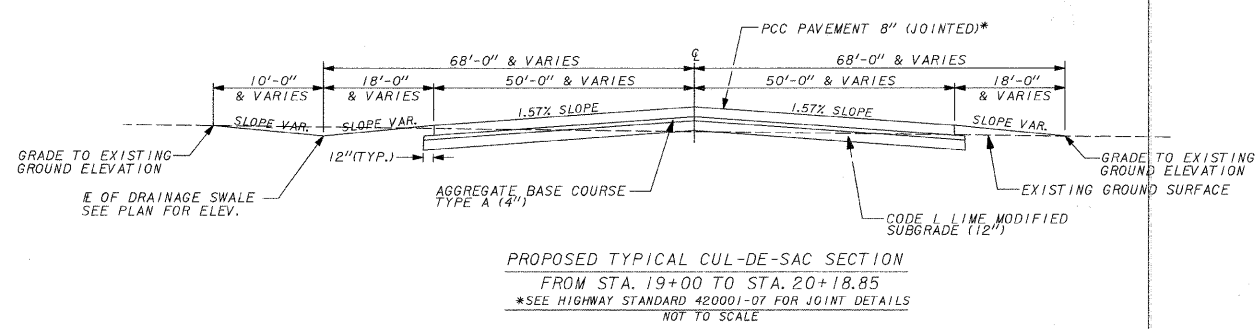
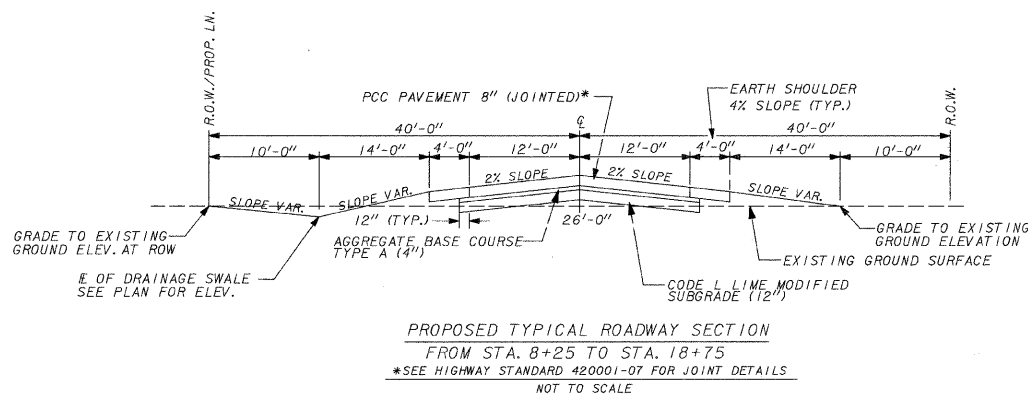


PC = STA. 14+01.21	Δ = 90°37'37"
PI = STA. 14+61.87	R = 60.00'
PT = STA. 14+96.11	T = 60.66'
	L = 94.90'

LEGEND
 - - - - - LONGITUDINAL JOINT
 ———— TRANSVERSE JOINT

PAVEMENT LAYOUT DETAIL FROM STA. 13+63.48 TO STA. 15+33.83
SCALE 1" = 20'

PAY ITEM CODE NO.	DESCRIPTION	UNIT	CONST. TY. CODE QUANTITIES
X2500900	SEEDING, CLASS 1 (SPECIAL)	ACRE	1.90
20200100	EARTH EXCAVATION	CU. YD.	980
20400800	FURNISHED EXCAVATION	CU. YD.	800
20800150	TRENCH BACKFILL	CU. YD.	5
28000250	TEMPORARY EROSION CONTROL SEEDING	POUND	200
28000305	TEMPORARY DITCH CHECKS	FOOT	70
28000400	PERIMETER EROSION BARRIER	FOOT	750
28000500	INLET AND PROTECTION	EACH	1
30201500	LIME	TON	140
31000600	PROCESSING LIME STABILIZED SOIL MIXTURE 12"	SQ. YD.	4,400
35100100	AGGREGATE BASE COURSE, TYPE A	TON	1,050
42000301	PORTLAND CEMENT CONCRETE PAVEMENT 8" (JOINTED)	SQ. YD.	4,112
54213657	PRECAST REINFORCED CONCRETE FLARED END SECTIONS 12"	EACH	2
542A0217	PIPE CULVERTS, CLASS A, TYPE 1 12"	FOOT	38
67100100	MOBILIZATION	L. SUM	1
72000100	SIGN PANEL - TYPE 1	SQ. FT.	12.5
72900200	METAL POST - TYPE B	FOOT	32



PAVEMENT JOINT DETAIL
SCALE 1" = 20'

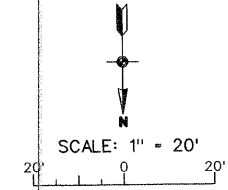
STRUCTURAL DESIGN DATA

DESIGN PERIOD - 20 YEAR
 STRUCTURAL DESIGN TRAFFIC: YEAR 2021 - <50
 PC = 30 SU = 10 MU = 10
 ROAD/STREET CLASSIFICATION: CLASS IV
 PERCENT OF STRUCTURAL DESIGN TRAFFIC IN DESIGN LANE
 P = 50 S = 50 M = 50
 TRAFFIC FACTOR: TF = 0.14
 MINIMUM SOIL SUPPORT: IIR = 2.8
 REQUIRED PAVEMENT - 6" PCC PAVEMENT
 DESIGN PAVEMENT - 8" (JOINTED)

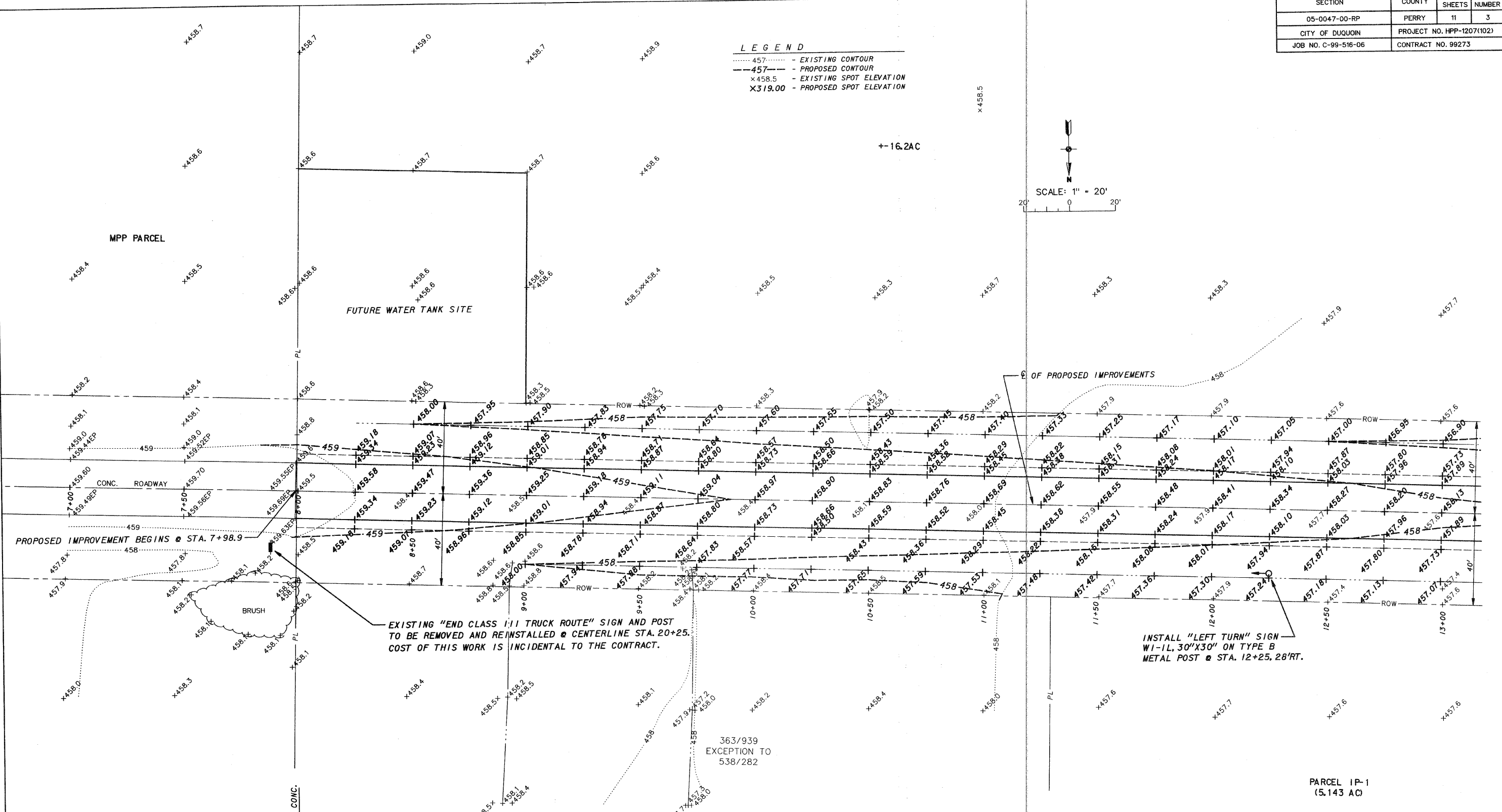
SCALE AS SHOWN	INDUSTRIAL PARK DRIVE - PHASE III
DATE MARCH 2011	SUMMARY OF QUANTITIES, TYPICAL SECTIONS, PAVEMENT LAYOUT DETAIL FROM STA. 13+63.48 TO STA. 15+33.83, EXPANSION JOINT DETAIL - STA. 7+98.9, PAVEMENT JOINT DETAIL AND STRUCTURAL DESIGN DATA
DRAWN BY SDR	

SECTION	COUNTY	TOTAL SHEETS	SHEET NUMBER
05-0047-00-RP	PERRY	11	3
CITY OF DUQUOIN		PROJECT NO. HPP-1207(102)	
JOB NO. C-99-516-06		CONTRACT NO. 99273	

LEGEND
 - - - - - EXISTING CONTOUR
 - - - - - 457 - PROPOSED CONTOUR
 x458.5 - EXISTING SPOT ELEVATION
 x319.00 - PROPOSED SPOT ELEVATION



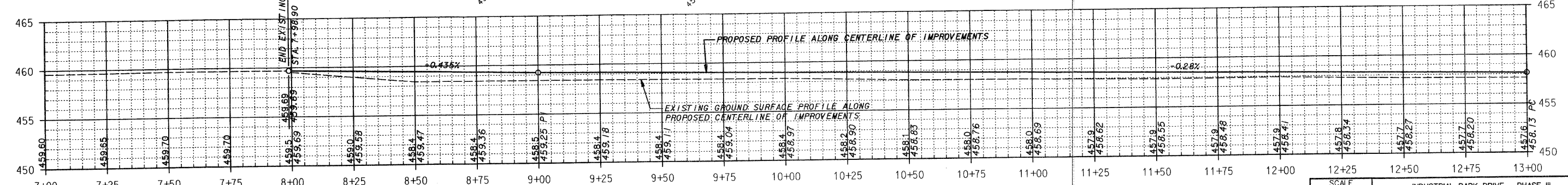
±16.2AC



PROPOSED IMPROVEMENT BEGINS @ STA. 7+98.9

EXISTING "END CLASS 1/1 TRUCK ROUTE" SIGN AND POST TO BE REMOVED AND REINSTALLED @ CENTERLINE STA. 20+25. COST OF THIS WORK IS INCIDENTAL TO THE CONTRACT.

INSTALL "LEFT TURN" SIGN W-1L, 30"X30" ON TYPE B METAL POST @ STA. 12+25, 28' RT.



SCALE AS SHOWN	INDUSTRIAL PARK DRIVE - PHASE III
DATE MARCH 2011	PLAN AND PROFILE
DRAWN BY SDR/ASW	STA. 7+98.9 TO STA. 13+00

SECTION	COUNTY	TOTAL SHEETS	SHEET NUMBER
05-0047-00-RP	PERRY	11	4
CITY OF DUQUOIN		PROJECT NO. HPP-1207(102)	
JOB NO. C-99-516-06		CONTRACT NO. 99273	

LEGEND

- - - 457 - - - EXISTING CONTOUR
- - - 457 - - - PROPOSED CONTOUR
- x 458.5 - EXISTING SPOT ELEVATION
- x 319.00 - PROPOSED SPOT ELEVATION

NOTE: SEE PAVEMENT LAYOUT DETAIL ON SHEET 2 FOR LAYOUT PLAN FROM STA. 13+63.48 TO STA. 15+33.83.

+ - 16.2 AC

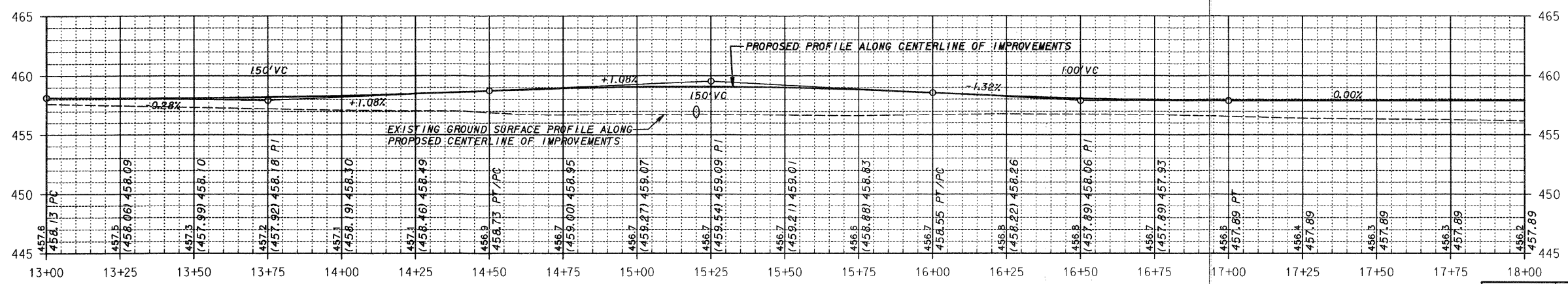
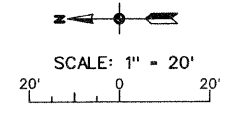
INSTALL "RIGHT TURN" SIGN W/ 1L, 30" X 30" ON TYPE B METAL POST @ STA. 16+75, 28' LT.

INSTALL PIPE CULVERT CLASS A, TYPE 1, 12" - 38 FT. AND 2-12" PRCF END SECTIONS
 U.S. FL. - 456.5 @ STA. 15+20, 25' LT.
 D.S. FL. - 456.4 @ STA. 15+20, 25' RT.

PARCEL 1P-1
(5.143 AC)

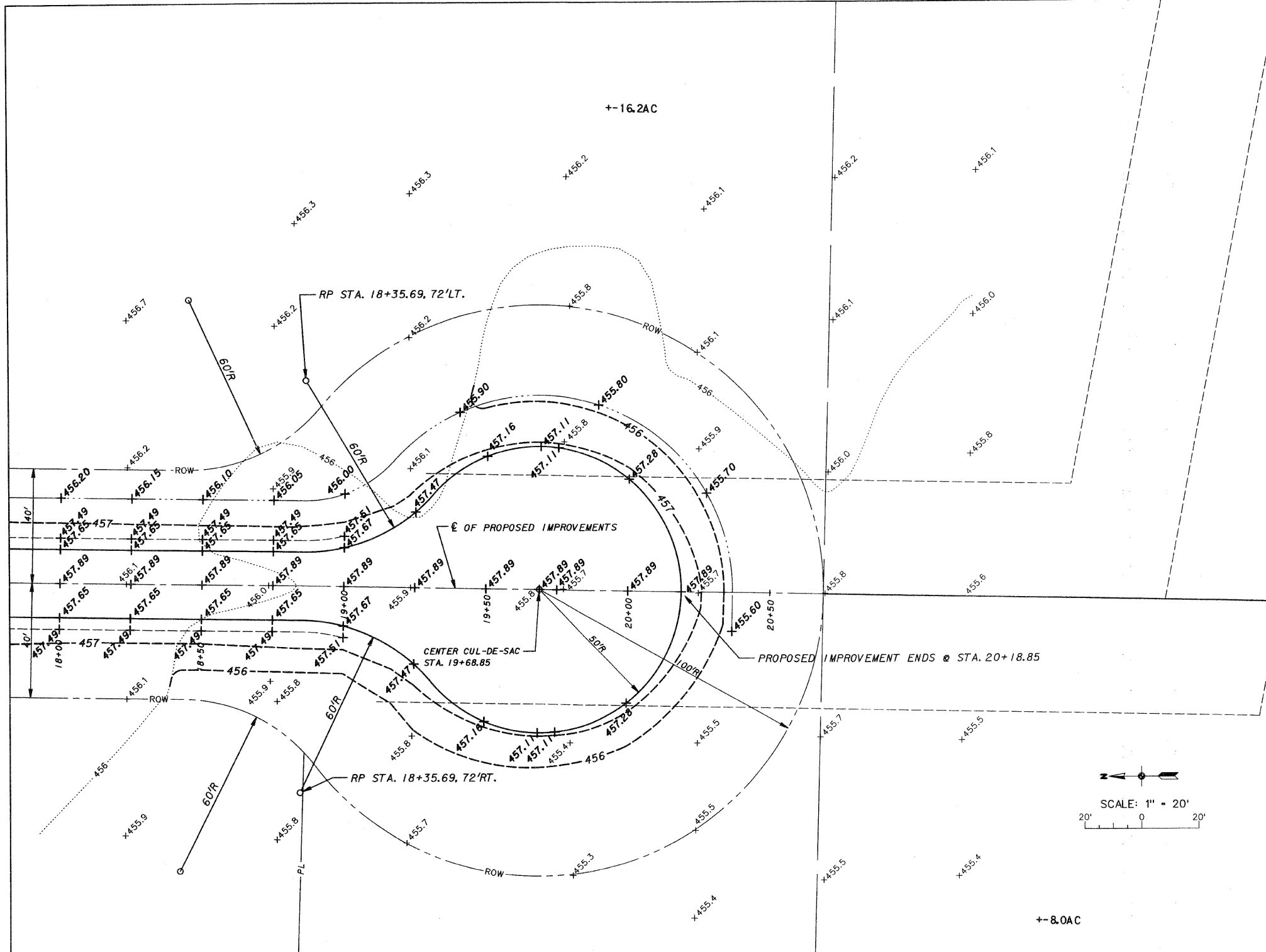
PARCEL 1P-2
(5.000 AC)

PARCEL 1P-3
(4.995 AC)



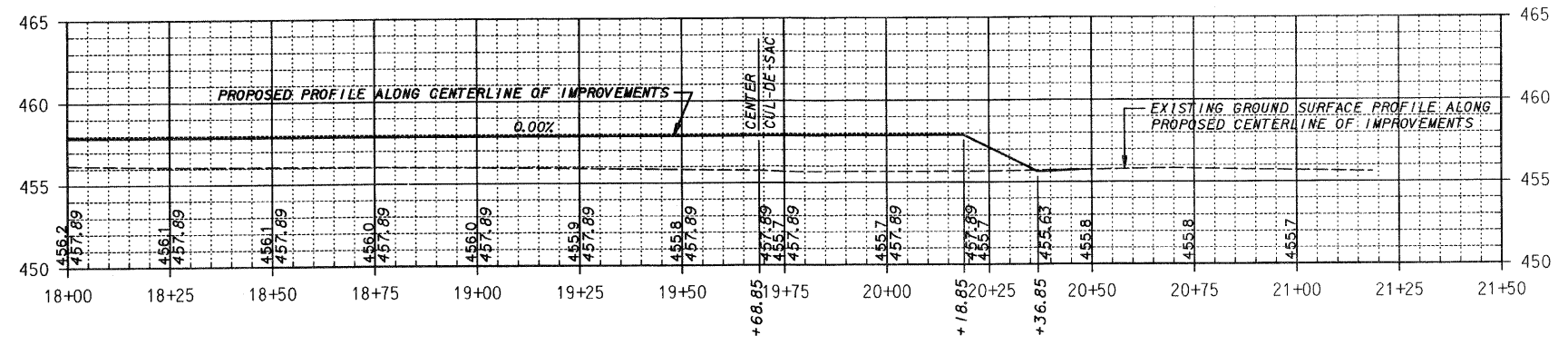
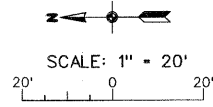
SCALE AS SHOWN	INDUSTRIAL PARK DRIVE - PHASE III
DATE MARCH 2011	PLAN AND PROFILE
DRAWN BY SDR/ASW	STA. 13+00 TO STA. 18+00

SECTION	COUNTY	TOTAL SHEETS	SHEET NUMBER
05-0047-00-RP	PERRY	11	5
CITY OF DUQUOIN	PROJECT NO. HPP-1207(102)		
JOB NO. C-99-516-06	CONTRACT NO. 99273		



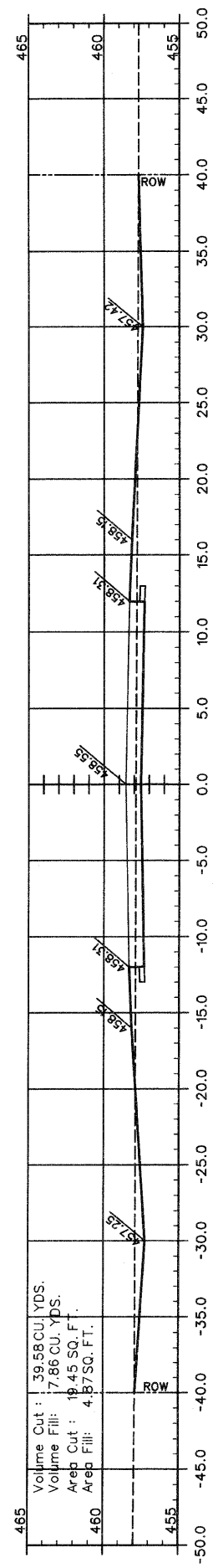
LEGEND

- 457..... - EXISTING CONTOUR
- 457 --- - PROPOSED CONTOUR
- x458.5 - EXISTING SPOT ELEVATION
- x319.00 - PROPOSED SPOT ELEVATION

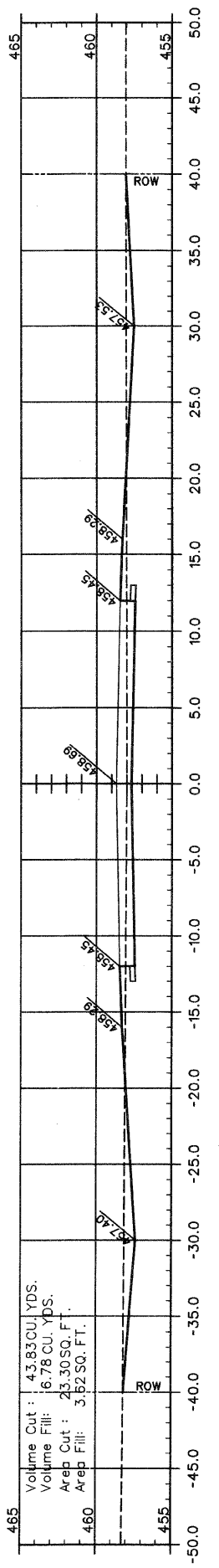


SCALE AS SHOWN	INDUSTRIAL PARK DRIVE - PHASE III
DATE MARCH 2011	PLAN AND PROFILE
DRAWN BY SDR/ASW	STA. 18+00 TO STA. 20+50

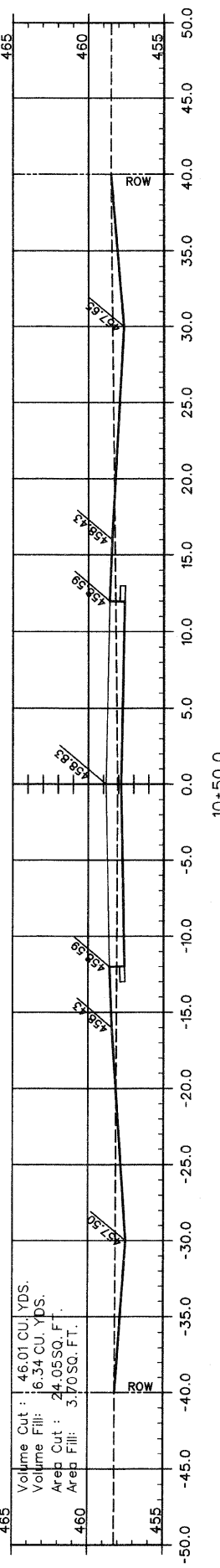
SECTION	COUNTY	TOTAL SHEETS	SHEET NUMBER
05-0047-00-RP	PERRY	11	6
CITY OF DUQUOIN		PROJECT NO. HPP-1207(102)	
JOB NO. C-99-516-06		CONTRACT NO. 99273	



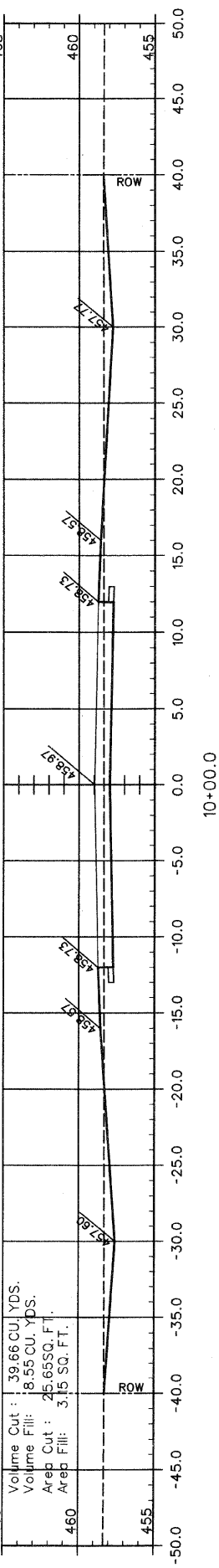
11+50.0



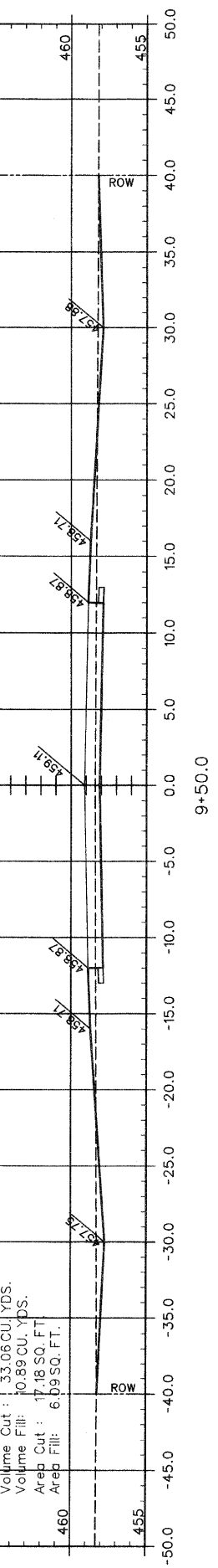
11+00.0



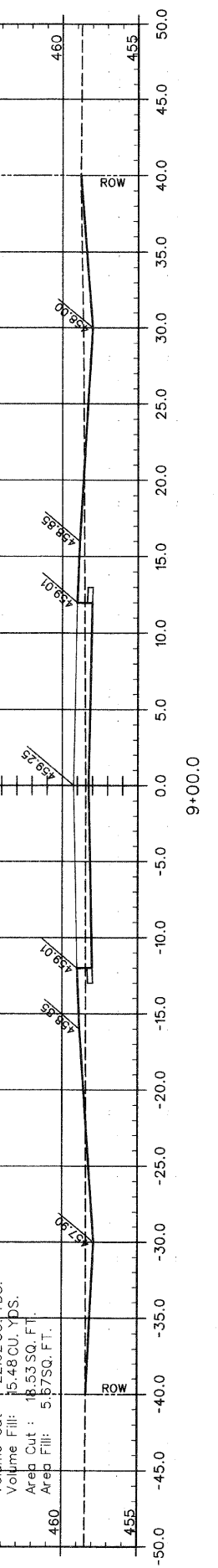
10+50.0



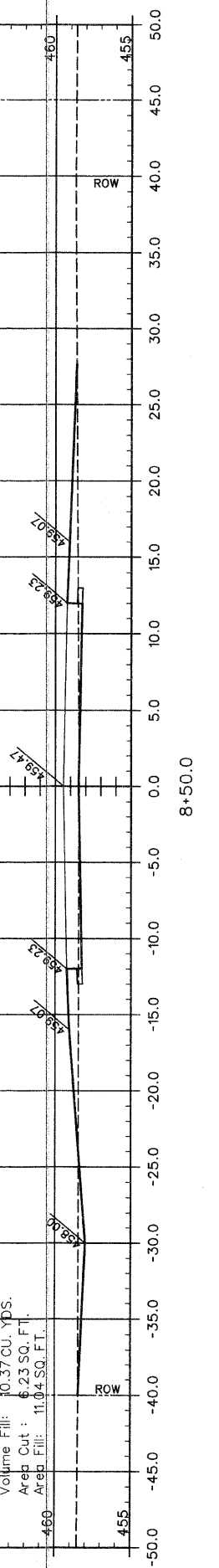
10+00.0



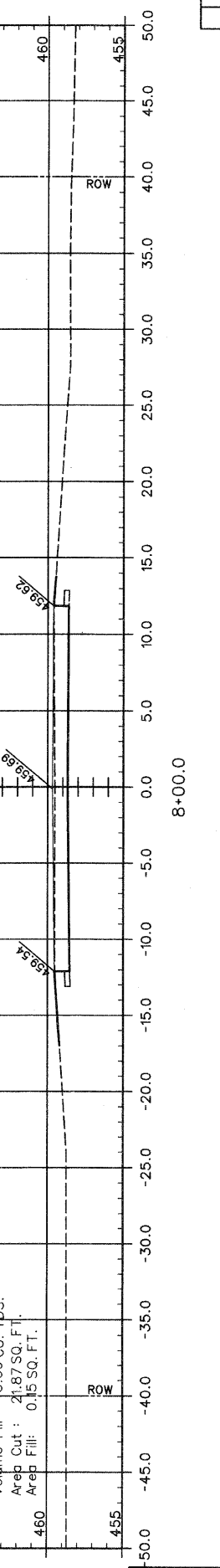
9+50.0



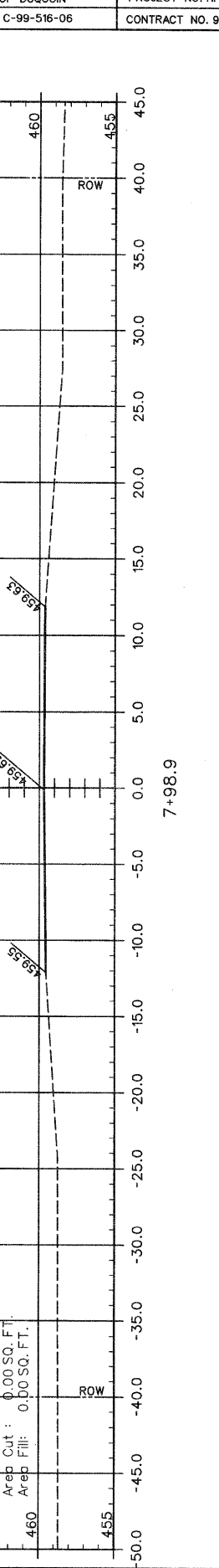
9+00.0



8+50.0



8+00.0



7+98.9

SCALE
1" = 5'

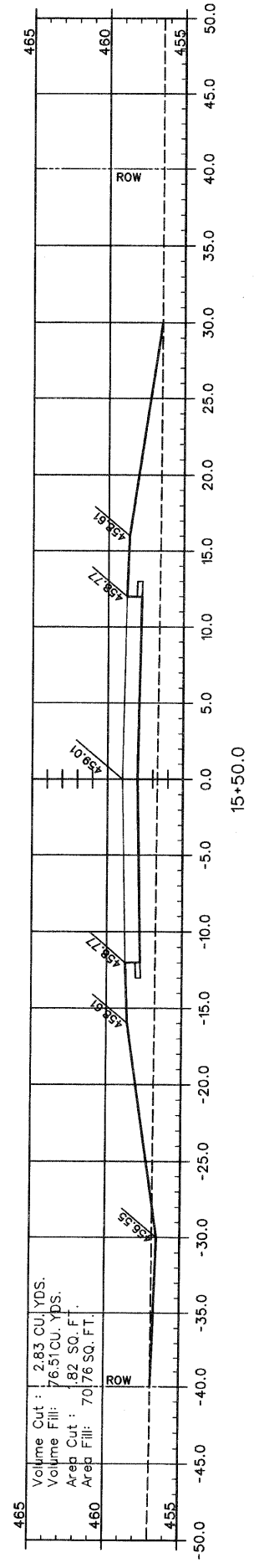
DATE
MARCH 2011

DRAWN BY
SDR

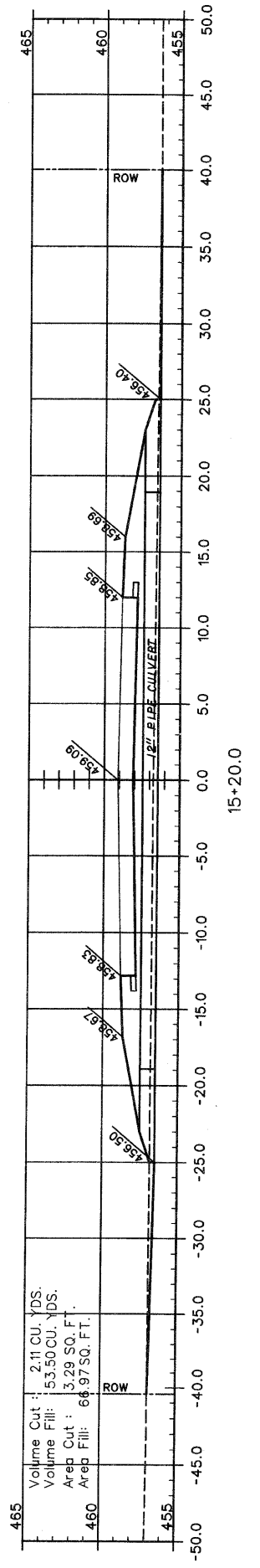
INDUSTRIAL PARK DRIVE - PHASE III

CROSS SECTIONS
STA. 7+98.9 TO STA. 11+50

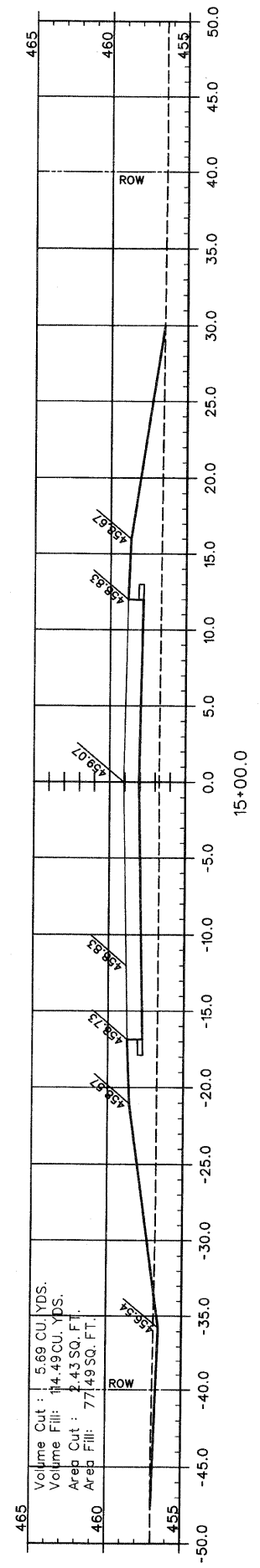
SECTION	COUNTY	TOTAL SHEETS	SHEET NUMBER
05-0047-00-RP	PERRY	11	7
CITY OF DUQUOIN	PROJECT NO. HPP-1207(102)		
JOB NO. C-99-516-06	CONTRACT NO. 99273		



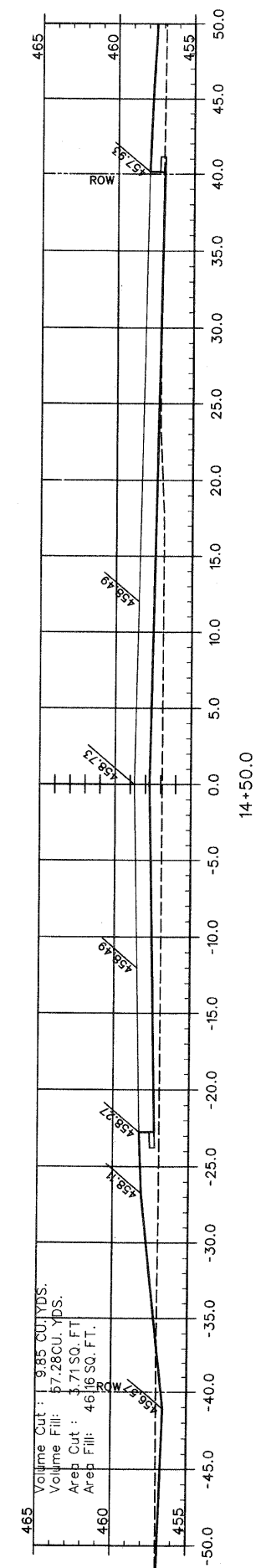
15+50.0



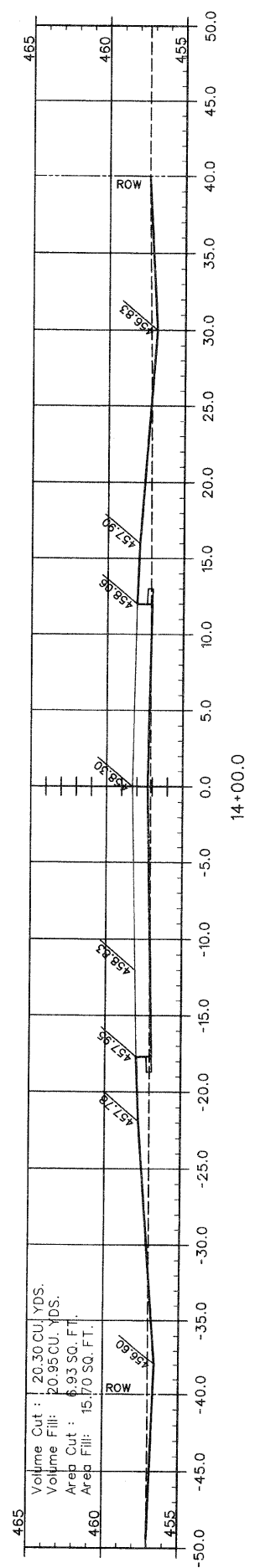
15+20.0



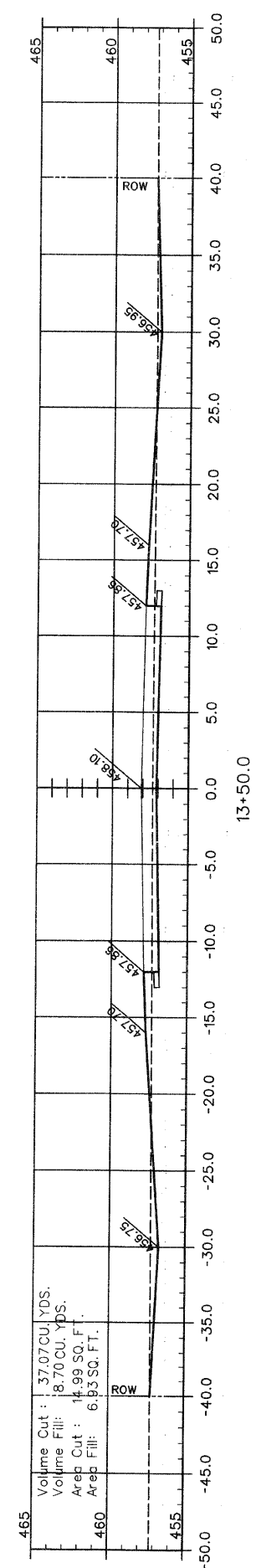
15+00.0



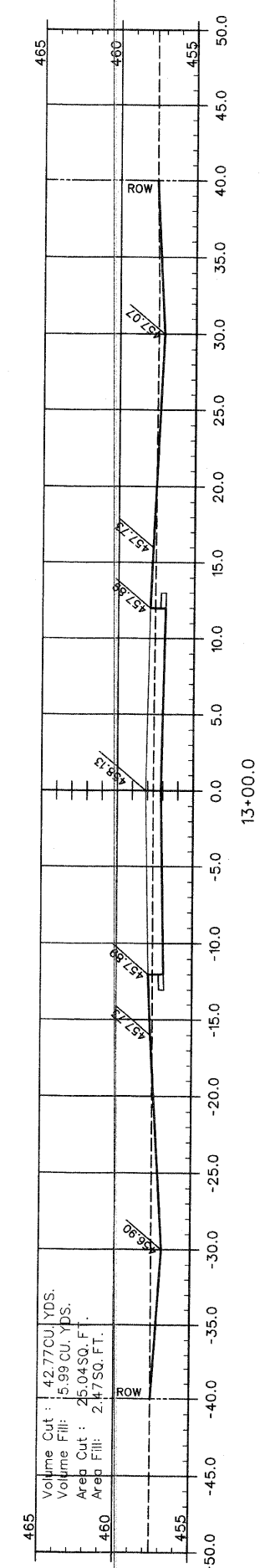
14+50.0



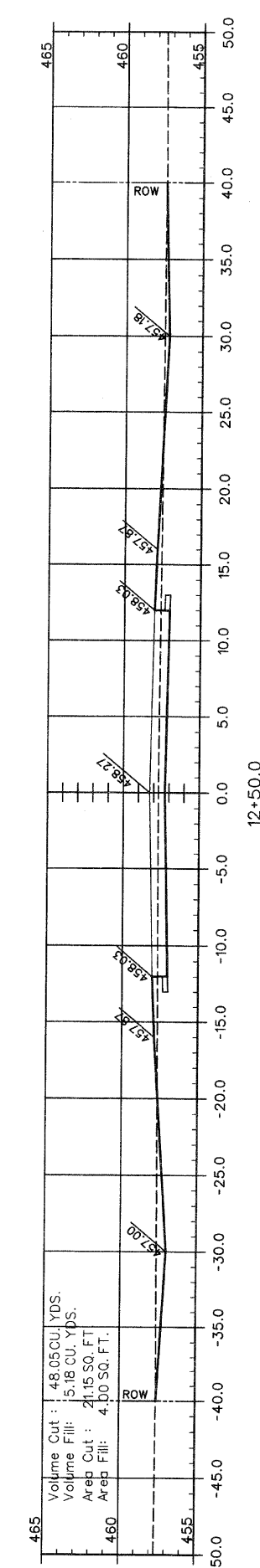
14+00.0



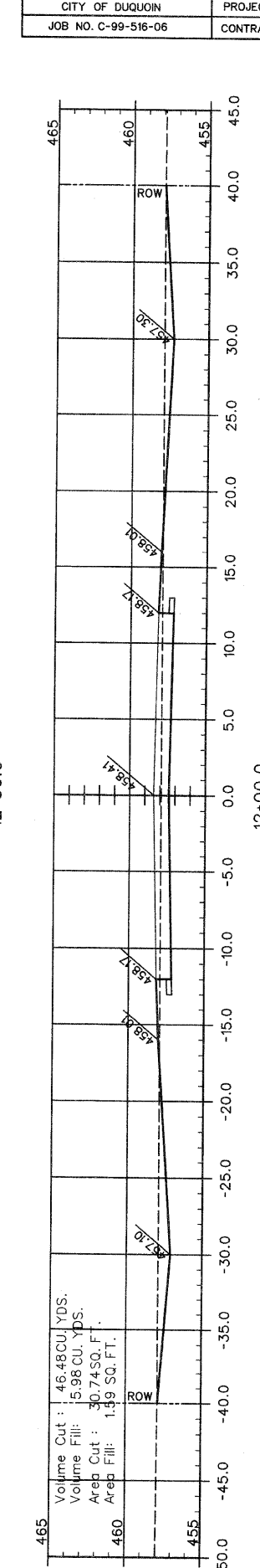
13+50.0



13+00.0



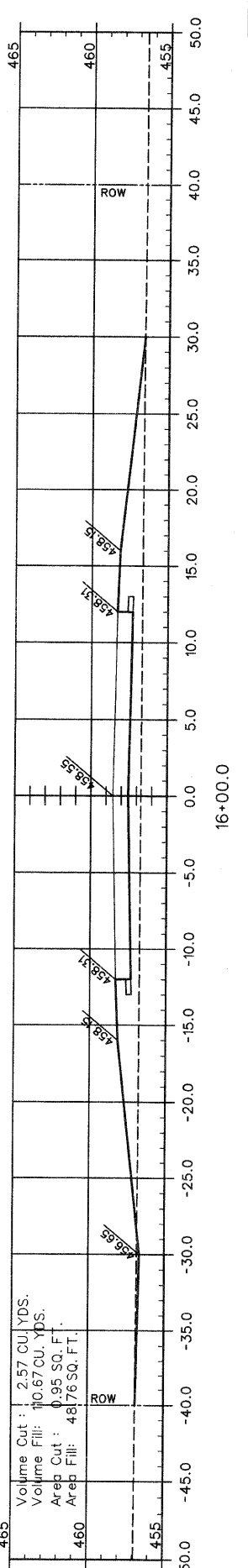
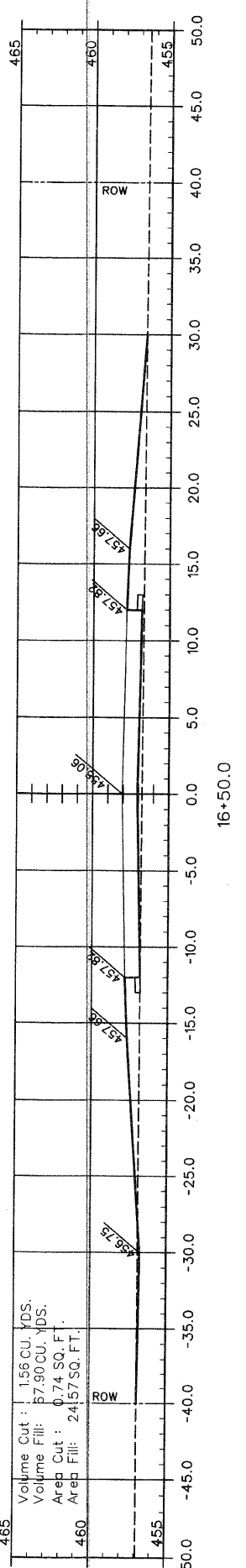
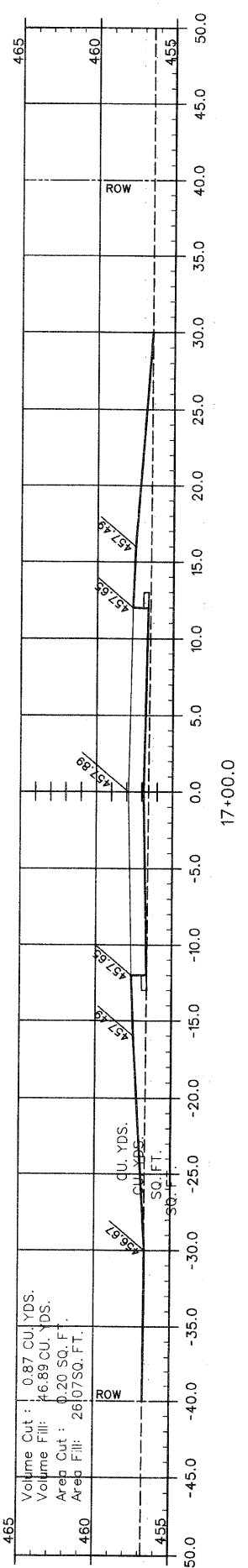
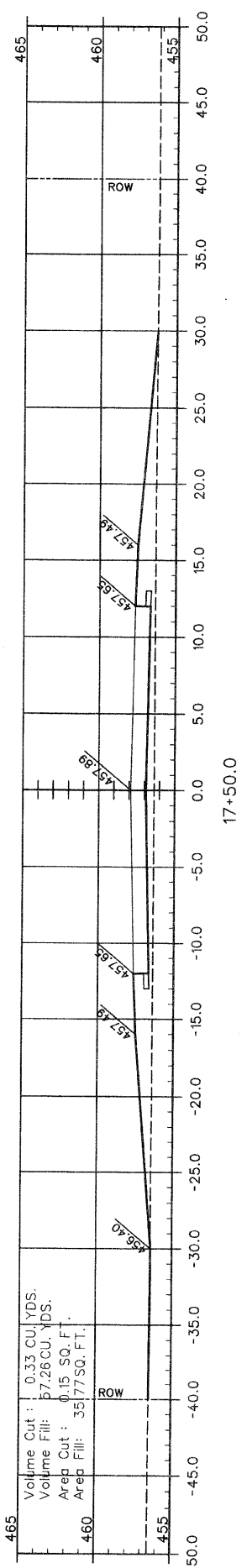
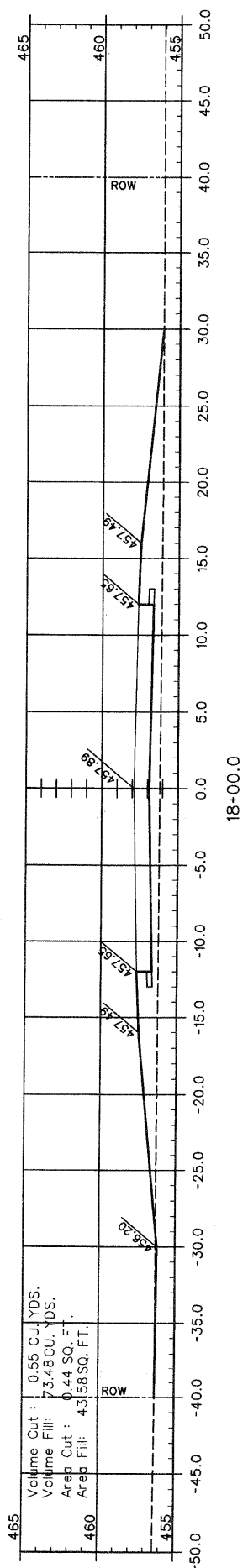
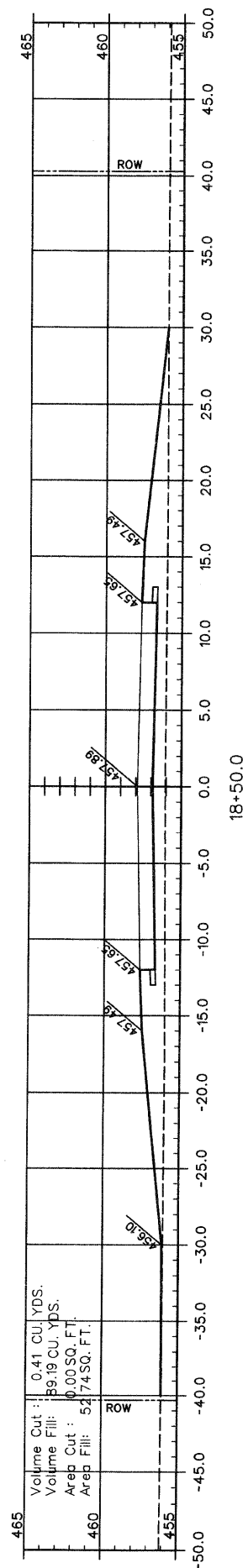
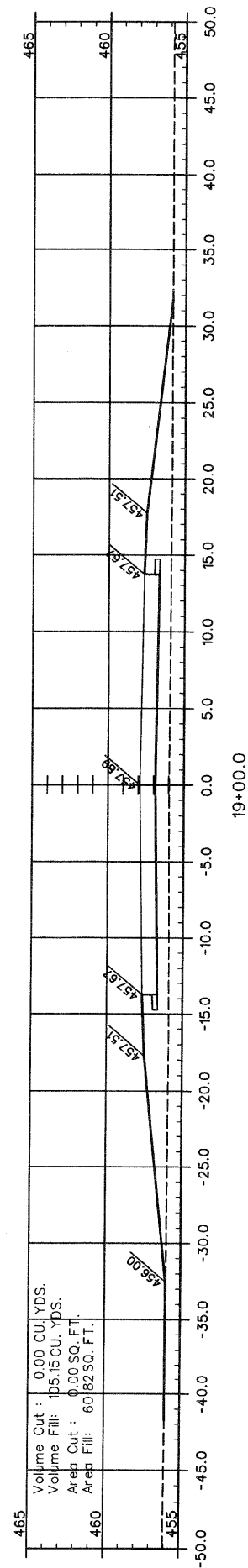
12+50.0



12+00.0

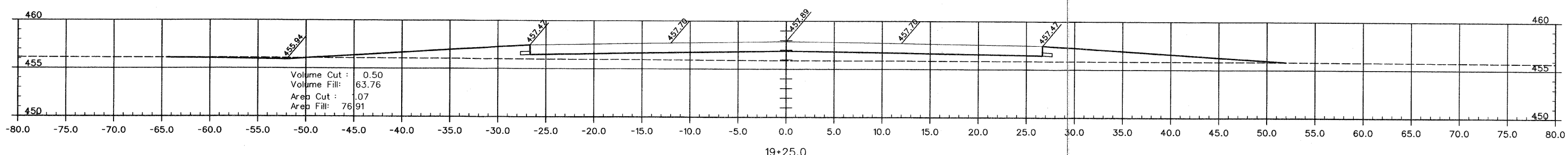
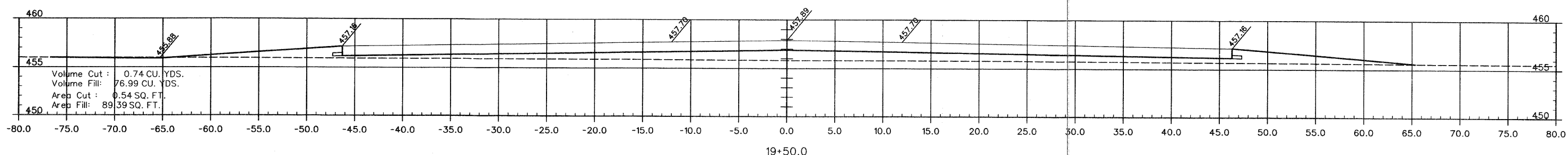
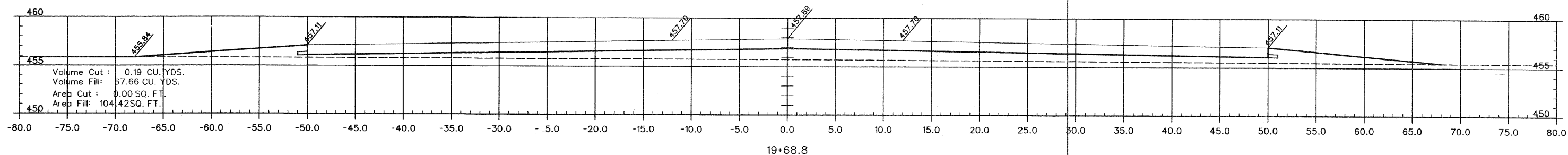
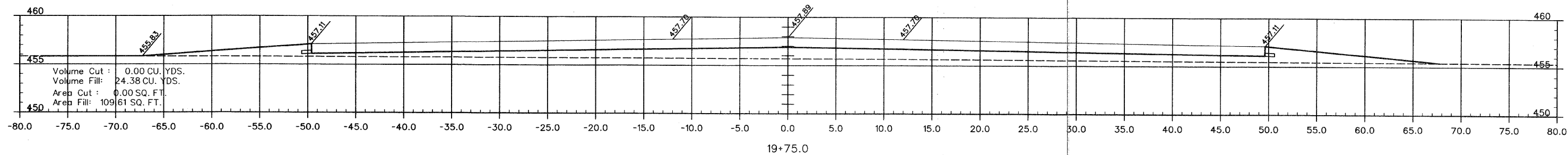
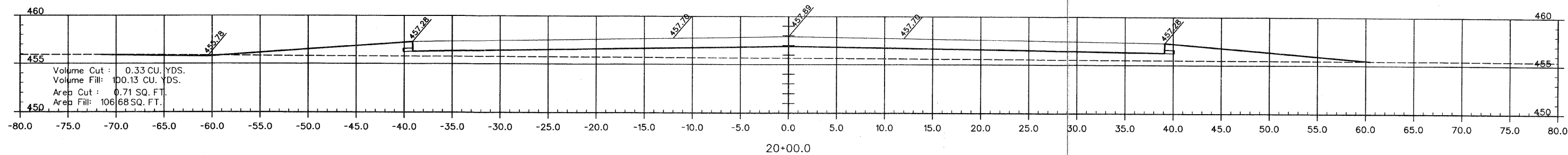
SCALE 1" = 20'	INDUSTRIAL PARK DRIVE - PHASE III
DATE MARCH 2011	
DRAWN BY SDR	
	CROSS SECTIONS STA. 12+00 TO STA. 15+50

SECTION	COUNTY	TOTAL SHEETS	SHEET NUMBER
05-0047-00-RP	PERRY	11	8
CITY OF DUQUOIN		PROJECT NO. HPP-1207(102)	
JOB NO. C-99-516-06		CONTRACT NO. 99273	



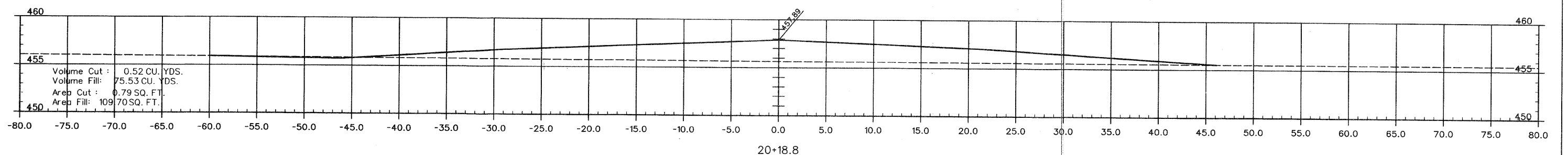
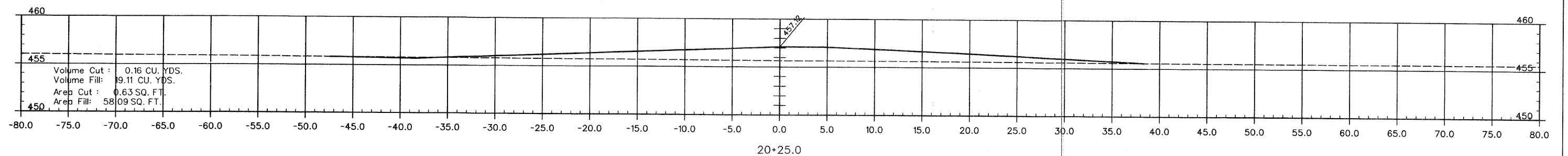
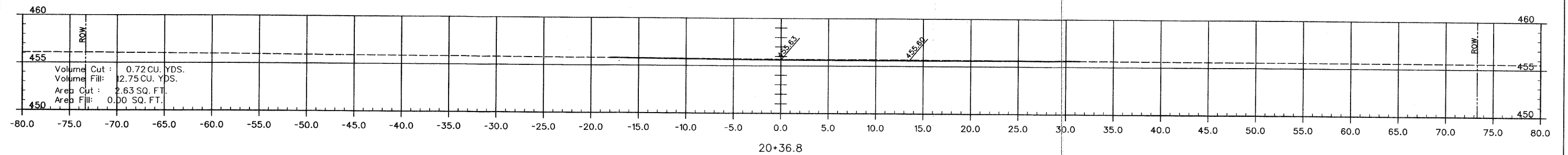
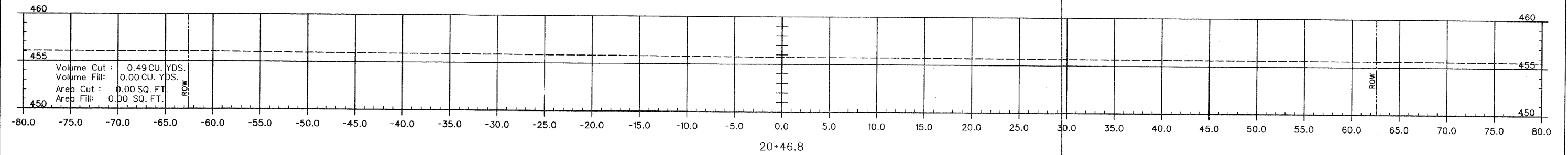
SCALE 1" = 5'	INDUSTRIAL PARK DRIVE - PHASE III
DATE MARCH 2011	
DRAWN BY SDR	
CROSS SECTIONS STA. 16+00 TO STA. 19+00	

SECTION	COUNTY	TOTAL SHEETS	SHEET NUMBER
05-0047-00-RP	PERRY	11	9
CITY OF DUQUOIN		PROJECT NO. HPP-1207(102)	
JOB NO. C-99-516-06		CONTRACT NO. 99273	



SCALE 1" = 5'	INDUSTRIAL PARK DRIVE - PHASE III
DATE MARCH 2011	CROSS SECTIONS
DRAWN BY SDR	STA. 19+25 TO STA. 20+00

SECTION	COUNTY	TOTAL SHEETS	SHEET NUMBER
05-0047-00-RP	PERRY	11	10
CITY OF DUQUOIN		PROJECT NO. HPP-1207(102)	
JOB NO. C-99-516-06		CONTRACT NO. 99273	



SCALE 1" = 5'	INDUSTRIAL PARK DRIVE - PHASE III
DATE MARCH 2011	CROSS SECTIONS
DRAWN BY SDR	STA. 20+18.8 TO STA. 20+46.8

SECTION	COUNTY	TOTAL SHEETS	SHEET NUMBER
05-0047-00-RP	PERRY	11	11
CITY OF DUQUOIN	PROJECT NO. HPP-1207(102)		
JOB NO. C-99-516-06	CONTRACT NO. 99273		

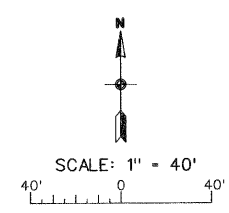
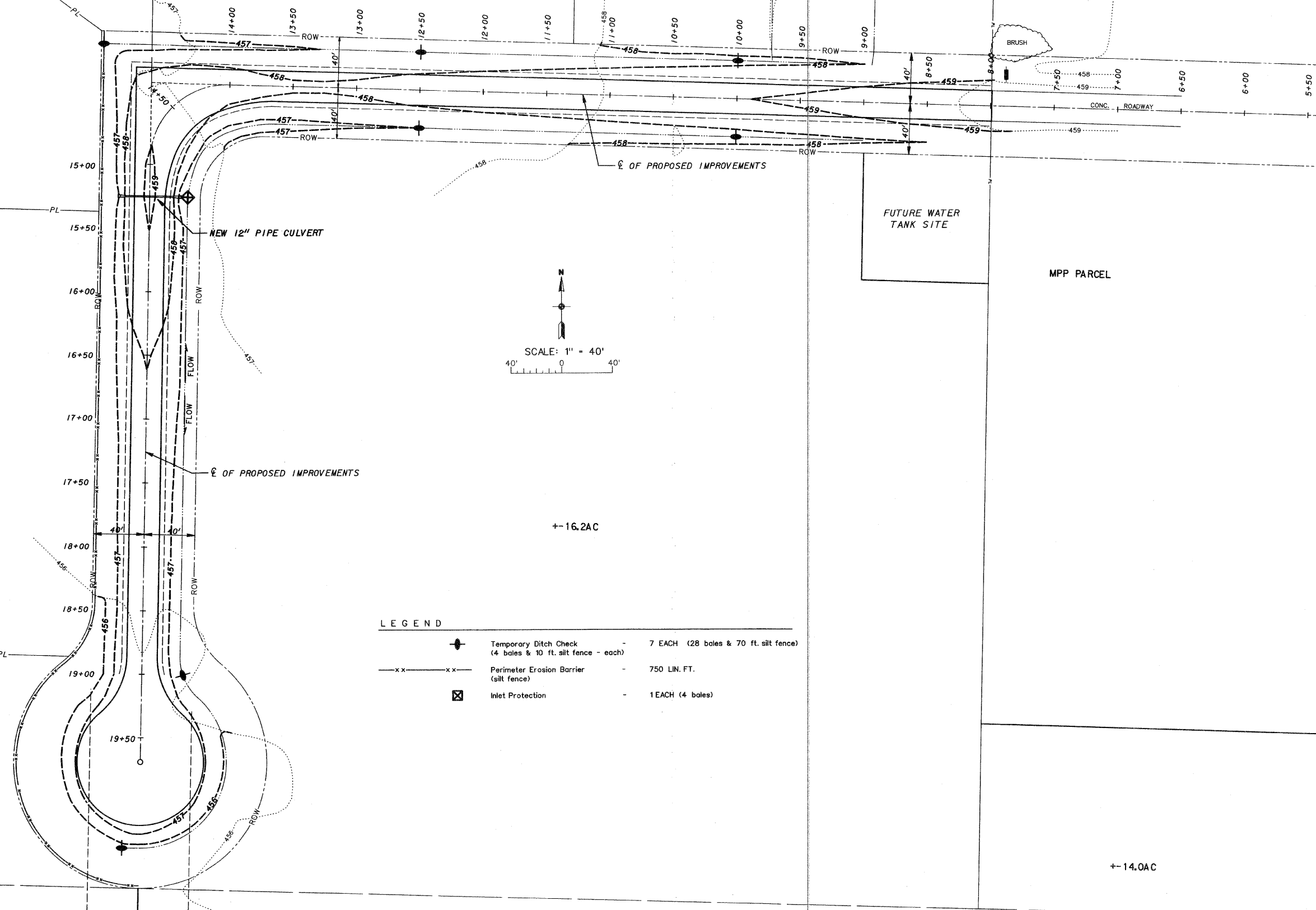
LEGEND
 - - - 457 - - - EXISTING CONTOUR
 - - - 457 - - - PROPOSED CONTOUR

PARCEL 1P-1
(5.143 AC)

363/939
EXCEPTION TO
538/282

PARCEL 1P-2
(5.000 AC)

PARCEL 1P-3
(4.995 AC)



LEGEND

	Temporary Ditch Check (4 bales & 10 ft. silt fence - each)	- 7 EACH (28 bales & 70 ft. silt fence)
	Perimeter Erosion Barrier (silt fence)	- 750 LIN. FT.
	Inlet Protection	- 1 EACH (4 bales)

+--8.0AC

+--16.2AC

+--14.0AC

SCALE 1"=40'	INDUSTRIAL PARK DRIVE - PHASE III
DATE MARCH 2011	STORMWATER POLLUTION PREVENTION PLAN
DRAWN BY SDR	