

B.M. - Double Nail in Power Pole
 43' Lt. Sta. 15+23
 Assumed Elev. 492.90

Existing Structure - Concrete deck on steel stringers with closed concrete abutments. 16.0' W x 26.0' L

CURVE DATA

PI Sta = 0+36.77
 $\Delta = 32^{\circ}47'20''$ T = 36.78'
 $D = 45^{\circ}50'12''$ L = 71.53'
 R = 125.00' E = 5.30'

CURVE DATA

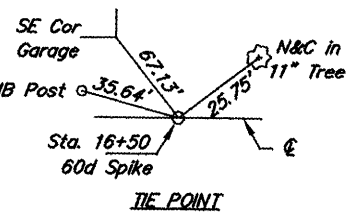
PI Sta = 2+58.79
 $\Delta = 40^{\circ}58'37''$ T = 46.71'
 $D = 45^{\circ}50'12''$ L = 89.40'
 R = 125.00' E = 8.44'

ROUTE	SECTION	COUNTY	TOTAL SHEETS	SHEET NO.
TR 151A	08-08106-00-BR	JACKSON	12	2
PROJECT NO. BROS-077(54)			CONTRACT NO. 99357	

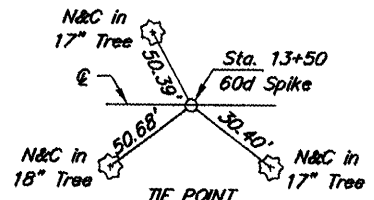
EXISTING CURVE
 $D = 6^{\circ}04'25''$
 $R = 943.35'$

Begin Temporary Stream Crossing
 Sta. 13+67.03 Bk = Sta. 0+00 Ah

EXISTING CURVE
 $D = 3^{\circ}25'10''$
 $R = 1675.64'$



SCALES:
 1" = 40' HOR
 1" = 10' VER



CURVE DATA

PI Sta = 1+05.69
 $\Delta = 30^{\circ}34'15''$ T = 34.16'
 $D = 45^{\circ}50'12''$ L = 66.69'
 R = 125.00' E = 4.58'

CURVE DATA

PI Sta = 1+92.53
 $\Delta = 18^{\circ}04'01''$ T = 19.87'
 $D = 45^{\circ}50'12''$ L = 39.42'
 R = 125.00' E = 1.57'

Station 1+51.5 - Pipe Culverts,
 Class D, Type 1 72" (Temporary) - 84 Foot
 Skewed 19' Rt. Forward
 US 18.8' Lt., DS 20.9' Rt.
 Match existing channel grade.

