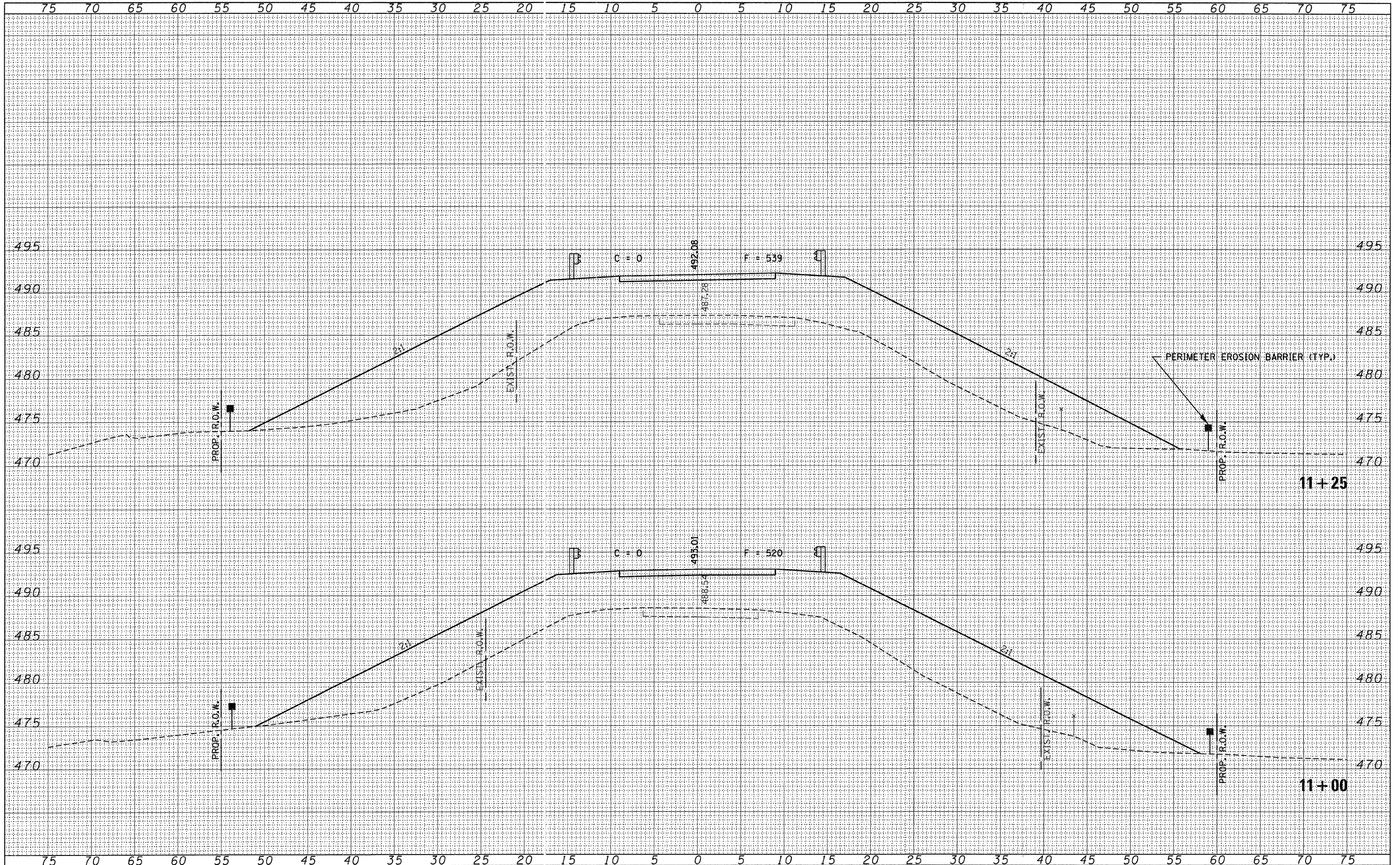


DATE	
BY	
FINAL SURVEY	SURVEYED
NOTE BOOK NO.	PLOTTED
AREAS CHECKED	DATE

DATE	
BY	
ORIGINAL SURVEY	SURVEYED
NOTE BOOK NO.	PLOTTED
AREAS CHECKED	DATE



FILE NAME = 090172-shr-sss.dgn  
 HAMPTON, LENZINI AND RENWICK, INC.  
 3088 STEVENSON DRIVE, SUITE 201  
 SPRINGFIELD, ILLINOIS 62761  
 ILLINOIS PROFESSIONAL DESIGN FIRM  
 LS / PE / SE CORP. 154.000369

USER NAME =  
 PLOT SCALE =  
 PLOT DATE = 2/4/2011

DESIGNED - L.F.S.  
 DRAWN - D.T.M.  
 CHECKED - S.W.M.  
 DATE - 11/13/09

REVISED -  
 REVISED -  
 REVISED -  
 REVISED -

STATE OF ILLINOIS  
 JEFFERSON COUNTY HIGHWAY DEPARTMENT

CROSS SECTIONS  
 DENKER ROAD  
 SCALE: 5H:5V  
 SHEET NO. OF SHEETS STA. 11+00 TO STA. 11+25

T.R.	SECTION	COUNTY	TOTAL SHEETS	SHEET NO.
165	05-16113-00-BR	JEFFERSON	33	17
WEBBER ROAD DISTRICT			CONTRACT NO. 99440	
ILLINOIS FED. AID PROJECT				