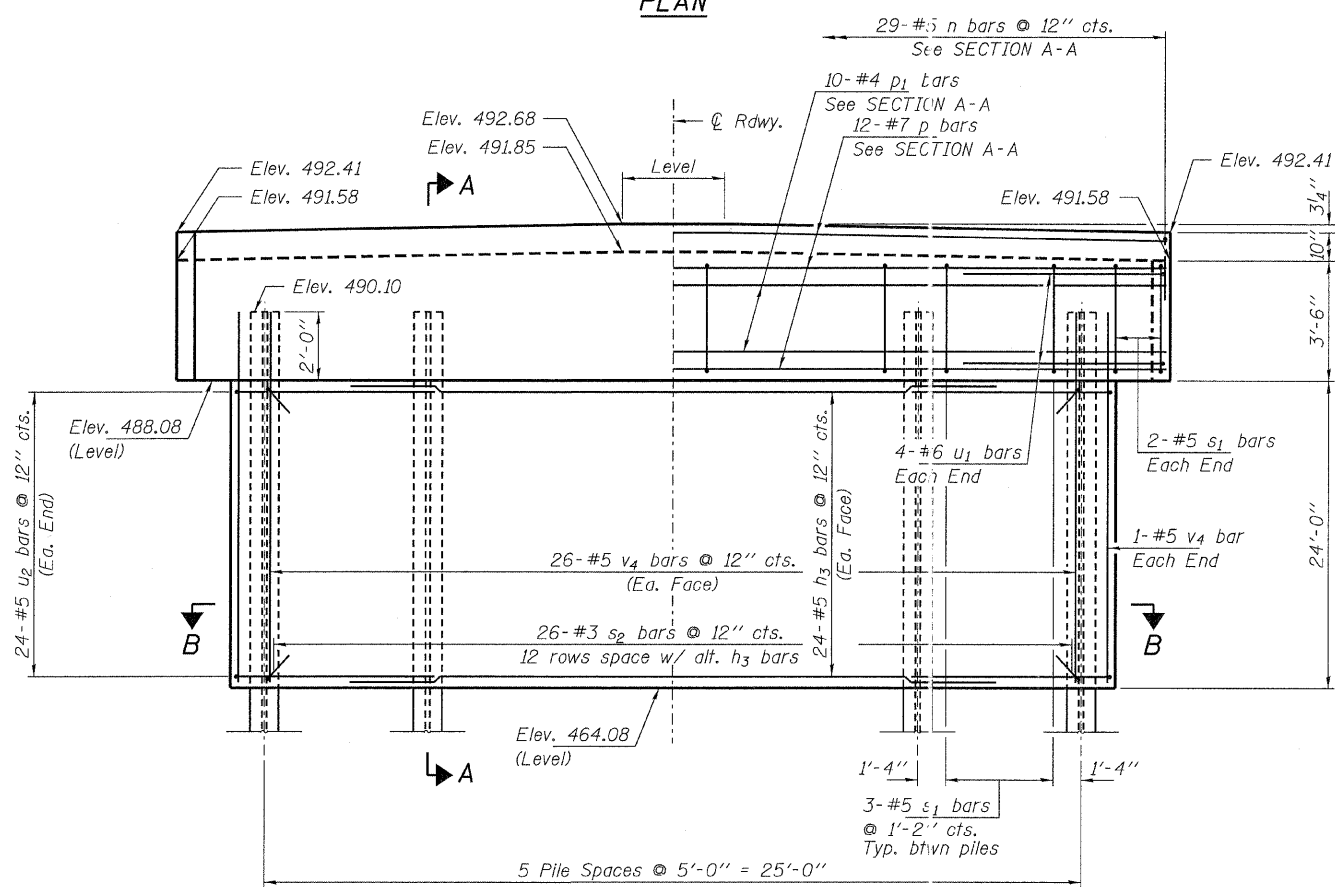
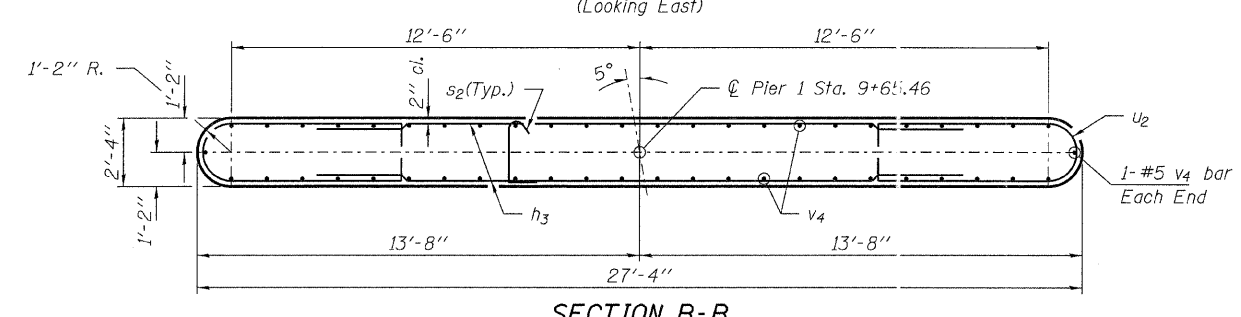


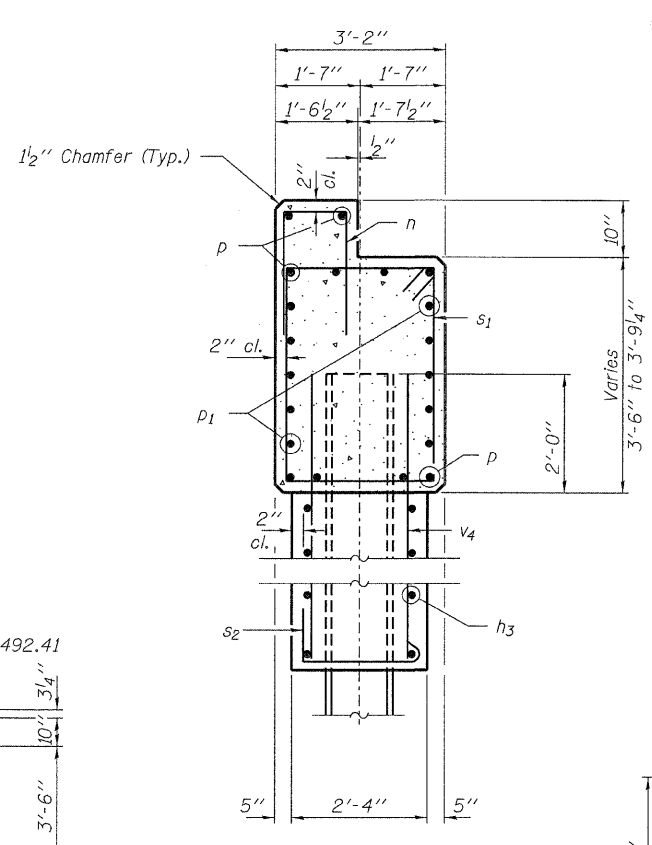
PLAN



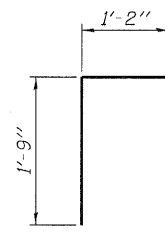
ELEVATION
(Looking East)



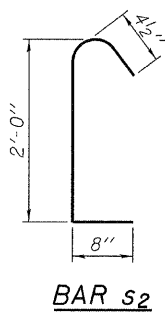
SECTION B-B



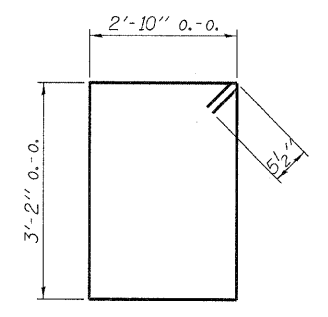
SECTION A-A



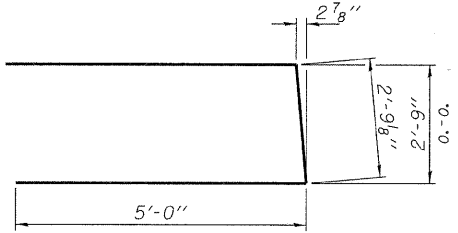
BAR n



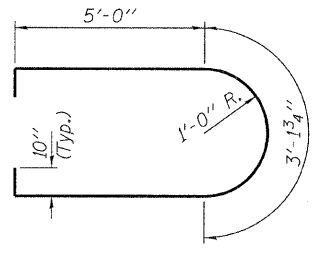
BAR s2



BAR s1



BAR u1



BAR u2

MIN. BAR LAP
#5 = 1'-8"

PILE DATA

Type: Steel HP12x53
 No. Req'd. (Pier 1): 6
 Factored Resistance Available (Rf): 209 Kips/Pile
 Nominal Required Bearing (Rn): 419 Kips/Pile
 Est. Length: 45 Ft/Pile

Notes: The Steel H-Piles shall be according to AASHTO M270 Grade 50.

BILL OF MATERIAL - PIER 1

BAR	NO.	SIZE	LENGTH	SHAPE
h3	48	#5	19'-0"	—
n	29	#5	4'-8"	□
p	12	#7	28'-4"	—
p1	10	#4	28'-4"	—
s1	19	#5	12'-11"	□
s2	312	#3	3'-1"	L
u1	8	#6	12'-10"	U
u2	48	#5	14'-10"	U
v4	54	#5	25'-10"	—
Concrete Structures			Cu. Yd.	69.3
Reinforcement Bars			Pound	4,950
Steel Piles HP12x53			Foot	270