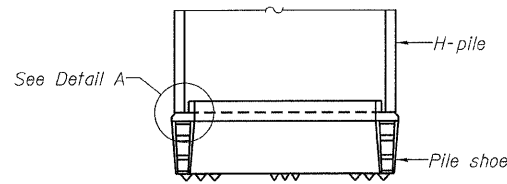
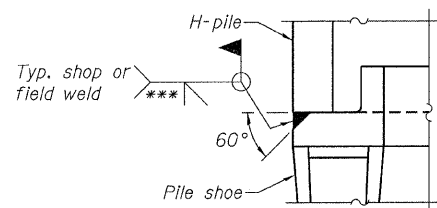


**STEEL PILE TABLE**

| Designation | Depth d | Flange width b <sub>f</sub> | Web and Flange thickness t | Encasement diameter A |
|-------------|---------|-----------------------------|----------------------------|-----------------------|
| HP 14x117   | 14 1/4" | 14 7/8"                     | 13/16"                     | 30"                   |
| x102        | 14"     | 14 3/4"                     | 1/16"                      | 30"                   |
| x89         | 13 7/8" | 14 3/4"                     | 5/8"                       | 30"                   |
| x73         | 13 5/8" | 14 5/8"                     | 1/2"                       | 30"                   |
| HP 12x84    | 12 1/4" | 12 1/4"                     | 1/16"                      | 24"                   |
| x74         | 12 1/8" | 12 1/4"                     | 5/8"                       | 24"                   |
| x63         | 12"     | 12 1/8"                     | 1/2"                       | 24"                   |
| x53         | 11 3/4" | 12"                         | 7/16"                      | 24"                   |
| HP 10x57    | 10"     | 10 1/4"                     | 9/16"                      | 24"                   |
| x42         | 9 3/4"  | 10 1/8"                     | 7/16"                      | 24"                   |
| HP 8x36     | 8"      | 8 1/8"                      | 7/16"                      | 18"                   |

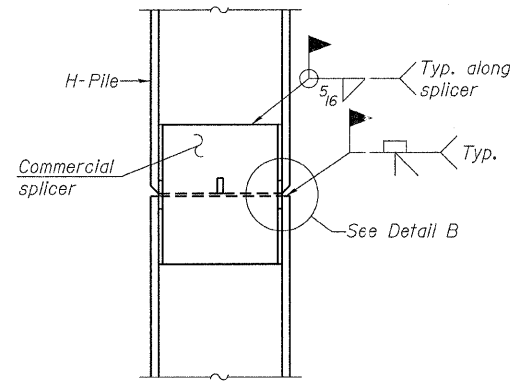


**ELEVATION**

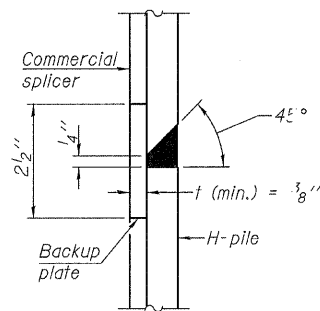


**DETAIL A**

**H-PILE SHOE ATTACHMENT**

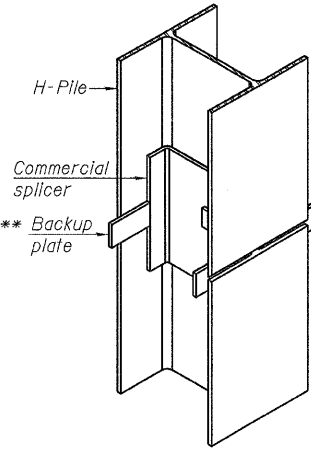


**ELEVATION**

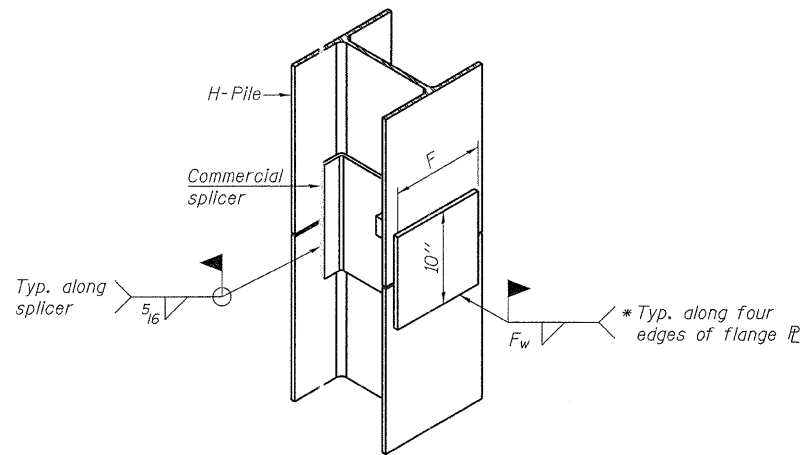


**DETAIL "B"**

**WELDED COMMERCIAL SPLICE**



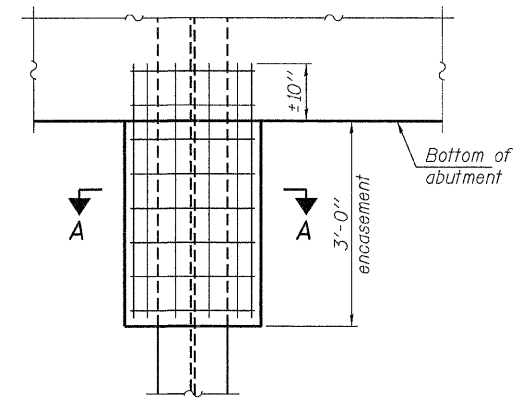
**ISOMETRIC VIEW**



**ISOMETRIC VIEW**

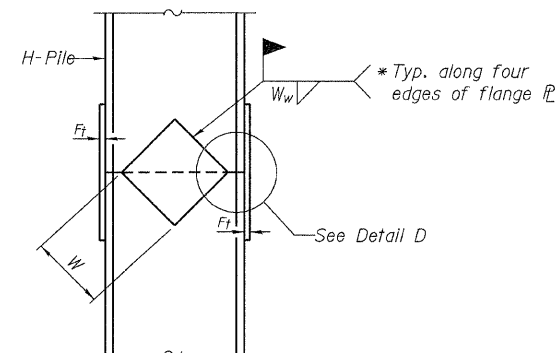
**WELDED COMMERCIAL SPLICE ALTERNATE**

- \* Interrupt welds 1/4" from end of web and/or each flange.
- \*\* Remove portions of backup plates that extend outside the flanges.
- \*\*\* Weld size per pile shoe manufacturer (5/16" min.).

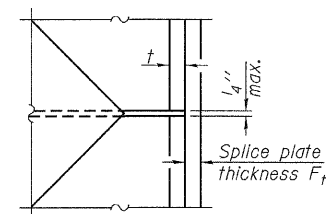


**ELEVATION**

**PILE ENCASEMENT**

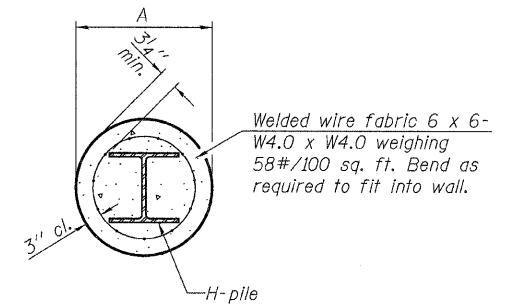


**ELEVATION**



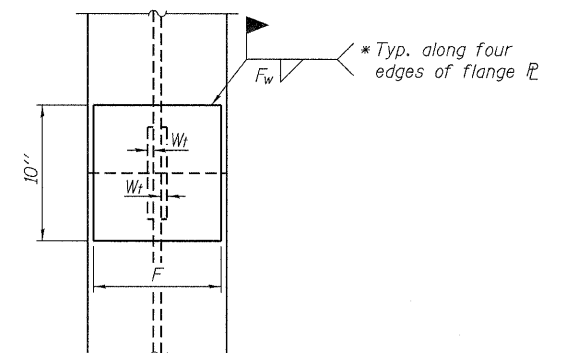
**DETAIL D**

**WELDED PLATE FIELD SPLICE**



Note:  
Forms for encasement may be omitted when soil conditions permit.

**SECTION A-A**



**END VIEW**

| Designation | F       | F <sub>t</sub> | F <sub>w</sub> | W      | W <sub>t</sub> | W <sub>w</sub> |
|-------------|---------|----------------|----------------|--------|----------------|----------------|
| HP 14x117   | 12 1/2" | 1"             | 7/8"           | 7 3/4" | 5/8"           | 1/2"           |
| x102        | 12 1/2" | 7/8"           | 3/4"           | 7 3/4" | 5/8"           | 1/2"           |
| x89         | 12 1/2" | 3/4"           | 1/16"          | 7 3/4" | 5/8"           | 1/2"           |
| x73         | 12 1/2" | 5/8"           | 9/16"          | 7 3/4" | 5/8"           | 1/2"           |
| HP 12x84    | 10"     | 7/8"           | 1/16"          | 6 1/2" | 5/8"           | 1/2"           |
| x74         | 10"     | 7/8"           | 1/16"          | 6 1/2" | 5/8"           | 1/2"           |
| x63         | 10"     | 5/8"           | 1/2"           | 6 1/2" | 1/2"           | 3/8"           |
| x53         | 10"     | 5/8"           | 1/2"           | 6 1/2" | 1/2"           | 3/8"           |
| HP 10x57    | 8"      | 3/4"           | 9/16"          | 5 1/4" | 1/2"           | 3/8"           |
| x42         | 8"      | 5/8"           | 9/16"          | 5 1/4" | 1/2"           | 3/8"           |
| HP 8x36     | 7"      | 5/8"           | 7/16"          | 4 1/4" | 1/2"           | 3/8"           |

Note:  
The steel H-piles shall be according to AASHTO M270 Grade 50.

F-HP 7-1-10

|  |               |                   |                    |  |   |                           |                |                    |              |                             |  |
|--|---------------|-------------------|--------------------|--|---|---------------------------|----------------|--------------------|--------------|-----------------------------|--|
| FILE NAME = 090172-shr-br:bridge.dgn   | USER NAME =   | DESIGNED - A.S.L. | REVISED - 05/26/10 | <b>STATE OF ILLINOIS<br/>JEFFERSON COUNTY HIGHWAY DEPARTMENT</b> | <b>HP PILE DETAILS<br/>STRUCTURE NO. 041-9932</b> | T.R.                      | SECTION        | COUNTY             | TOTAL SHEETS | SHEET NO.                   |  |
| HAMPTON, LENZINI AND RENWICK, INC.<br>3088 STEVENSON DRIVE, SUITE 201<br>SPRINGFIELD, ILLINOIS 62703 | PLLOT SCALE = | CHECKED - S.W.M.  | REVISED - 07/13/10 |  |   | 165B                      | 05-16113-00-BR | JEFFERSON          | 34           | 33                          |  |
| ILLINOIS PROFESSIONAL DESIGN FIRM<br>LS / PE / SE CORP. 184-00089                                    | PLLOT DATE =  | DRAWN - D.A.B.    | REVISED -          |  |   | WEBBER ROAD DISTRICT      |                | CONTRACT NO. 99440 |              | [ILLINOIS] FED. AID PROJECT |  |
|  |               | CHECKED - S.W.M.  | REVISED -          |  |   | SHEET NO. 11 OF 12 SHEETS |                |                    |              |                             |  |