

GENERAL NOTES:

THIS SECTION SHALL BE CONSTRUCTED IN ACCORDANCE WITH THE PLANS, SPECIAL PROVISIONS AND "STANDARD SPECIFICATIONS FOR ROAD AND BRIDGE CONSTRUCTION", ADOPTED JANUARY 1, 2007.

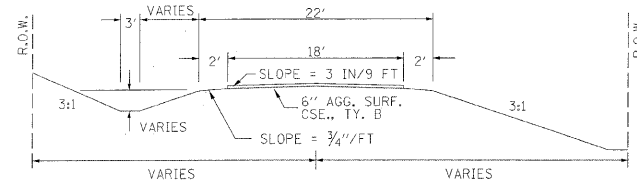
THE WORK INVOLVED ON THIS SECTION CONSISTS OF THE REMOVAL OF THE EXISTING STRUCTURE, THE CONSTRUCTION OF A 55 FOOT LONG SINGLE SPAN PRECAST, PRESTRESSED CONCRETE DECK BEAM BRIDGE, EARTH APPROACHES, AGGREGATE SURFACE COURSE AND OTHER MISCELLANEOUS ITEMS NECESSARY TO COMPLETE THIS SECTION.

ALL ELEVATIONS ARE BASED ON U.S.G.S. MEAN SEA LEVEL DATUM.

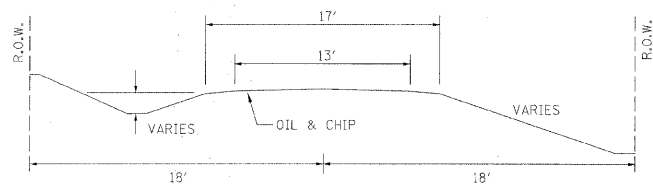
IT SHALL BE THE CONTRACTOR'S RESPONSIBILITY TO CONTACT ALL THE UTILITIES, AFFECTING THE PROJECT, PRIOR TO CONSTRUCTION.

THE EXISTING TANK CARS SHALL BE SALVAGED AND DELIVERED TO THE INDIAN CREEK TOWNSHIP YARD. THIS WORK SHALL BE CONSIDERED AS REMOVAL OF EXISTING STRUCTURES.

TYPICAL CROSS SECTION PROPOSED



TYPICAL CROSS SECTION EXISTING



UTILITIES:

J.U.L.I.E. 1-800-892-0123
FRONTIER
1-618-997-0707

NOTE: CONSTRUCT SPECIAL DITCH
STA 1+50 TO STA 4+83 LT
STA 1+50 TO STA 4+65 RT
STA 6+25 TO STA 8+00 LT

NOTE: PERIMETER EROSION BARRIER

STA 6+48 TO STA 6+93 LT

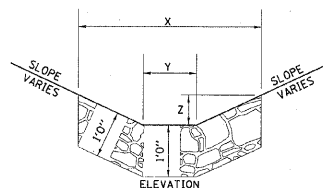
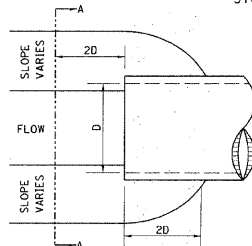
SHALL BE PLACED SO AS TO KEEP WETLAND PROTECTED DURING CONSTRUCTION.

NOTE: CONSTRUCT STONE LINED DITCH

STA 3+50 TO STA 4+83 LT (0.62 TON/LIN FT)
STA 4+00 TO STA 4+65 RT (0.62 TON/LIN FT)
STA 6+25 TO STA 7+00 LT (0.62 TON/LIN FT)
169 TON STONE LINED DITCH ALLOWED IN PROPOSAL.

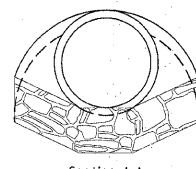
SEE STONE LINED DITCH DETAIL.

STONE LINED DITCH DESIGN



NOTE:
BOTTOM OF DITCH SLOPE

2 FT	x = 5 FT	6 FT	8 FT
	y = 2 FT	2 FT	2 FT
	z = 1 FT	1 FT	1 FT
	0.40	0.48	0.62 TON/LIN. FT

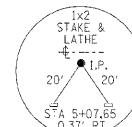


NOTE: FOR PLACEMENT, QUALITY GRADATION AND OTHER MISCELLANEOUS REQUIREMENTS FOR STONE LINED DITCH-SEE SPECIAL PROVISIONS.

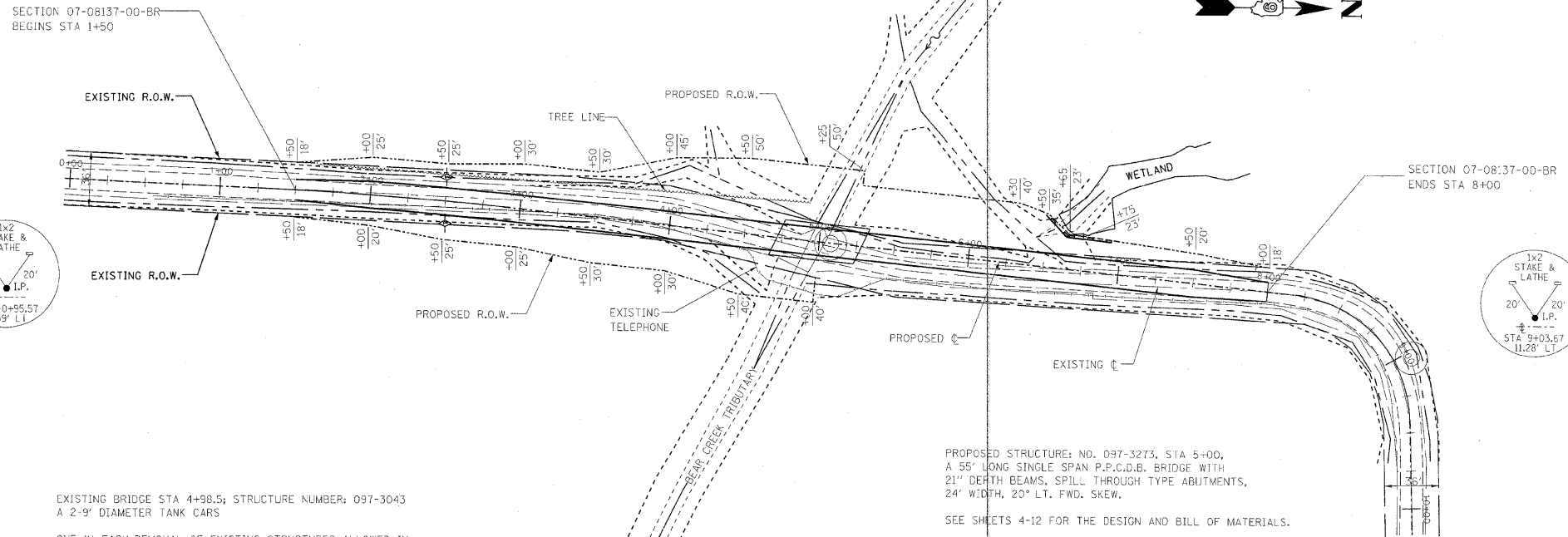
NOTE: CONSTRUCTION TRANSITION
STA. 1+50 TO STA 2+00
STA 7+50 TO STA 8+00

ALL QUANTITIES ARE INCLUDED IN THE PROPOSAL

CURVE #1
P.I. STA= 2+06.29
Δ RT. 3°07'07"
D= 154.35'
R= 3000'
T= 81.66'
L= 163.29'
E= 1.11'
B= NONE
T.R.= NONE
S.E. RUN= NONE
P.C. STA= 1+24.63
P.T. STA= 2+87.91



SECTION 07-08137-00-BR BEGINS STA 1+50



EXISTING BRIDGE STA 4+98.5; STRUCTURE NUMBER: 097-3043
A 2-9' DIAMETER TANK CARS

ONE (3) EACH-REMOVAL OF EXISTING STRUCTURES ALLOWED IN THIS PROPOSAL.

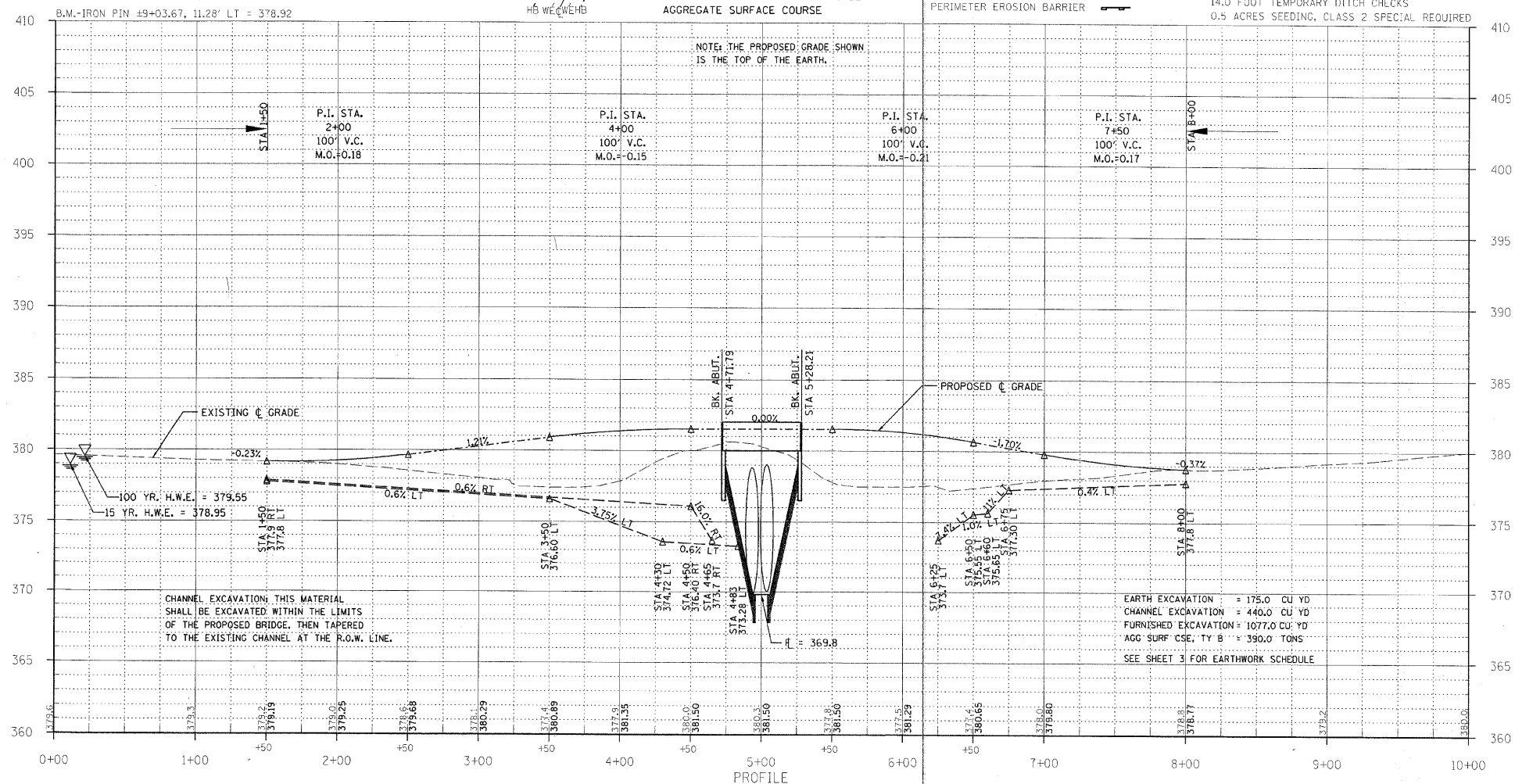
PROPOSED STRUCTURE: NO. 097-3273, STA 5+00,
A 55' LONG SINGLE SPAN P.P.C.D.B. BRIDGE WITH
21" DEPTH BEAMS, SPILL THROUGH TYPE ABUTMENTS,
24' WIDTH, 20' LT. FWD. SKEW.

SEE SHEETS 4-12 FOR THE DESIGN AND BILL OF MATERIALS.

NOTE: FILL NEXT TO BRIDGE TO BE AGGREGATE SURFACE COURSE

TEMPORARY DITCH CHECKS
PERIMETER EROSION BARRIER

0.2 ACRES TREE REMOVAL, ACRES
14.0 FOOT TEMPORARY DITCH CHECKS
0.5 ACRES SEEDING, CLASS 2 SPECIAL REQUIRED



CHANNEL EXCAVATION: THIS MATERIAL SHALL BE EXCAVATED WITHIN THE LIMITS OF THE PROPOSED BRIDGE, THEN TAPERED TO THE EXISTING CHANNEL AT THE R.O.W. LINE.

EARTH EXCAVATION = 175.0 CU YD
CHANNEL EXCAVATION = 440.0 CU YD
FURNISHED EXCAVATION = 1077.0 CU YD
AGG SURF. CSE. TY B = 390.0 TONS
SEE SHEET 3 FOR EARTHWORK SCHEDULE

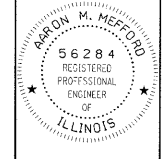
TR	SECTION	COUNTY	TOTAL SHEETS	SHEET NO.
28A	07-08137-00-BR	WHITE	13	2

323 W. 3RD ST.
P.O. BOX 160
MT. CARMEL, IL
62863
PHONE: (618)-262-8661
FAX: (618)-263-3327

405 W. STATE ST
SUITE 1
PRINCETON, IN
47570
PHONE: (812)-386-7611
FAX: (812)-385-2812



PROFESSIONAL DESIGN FIRM
LAND SURVEY & ENGINEERING CORPORATION
184-000897
(62-032435)(35-002769)



AARON M. MEFFORD
NAME
SIGNATURE
2-15-11
DATE
11-30-11 EXPIRES

TOWNSHIP ROUTE 28A
OVER BEAR CREEK TRIBUTARY
WHITE COUNTY, ILLINOIS

SHEET TITLE:
PLAN & PROFILE

SCALE: VARIES
BY: AMM
DATE: 2011
REV:

2 OF 13 SHEETS
SHEET NO. 2