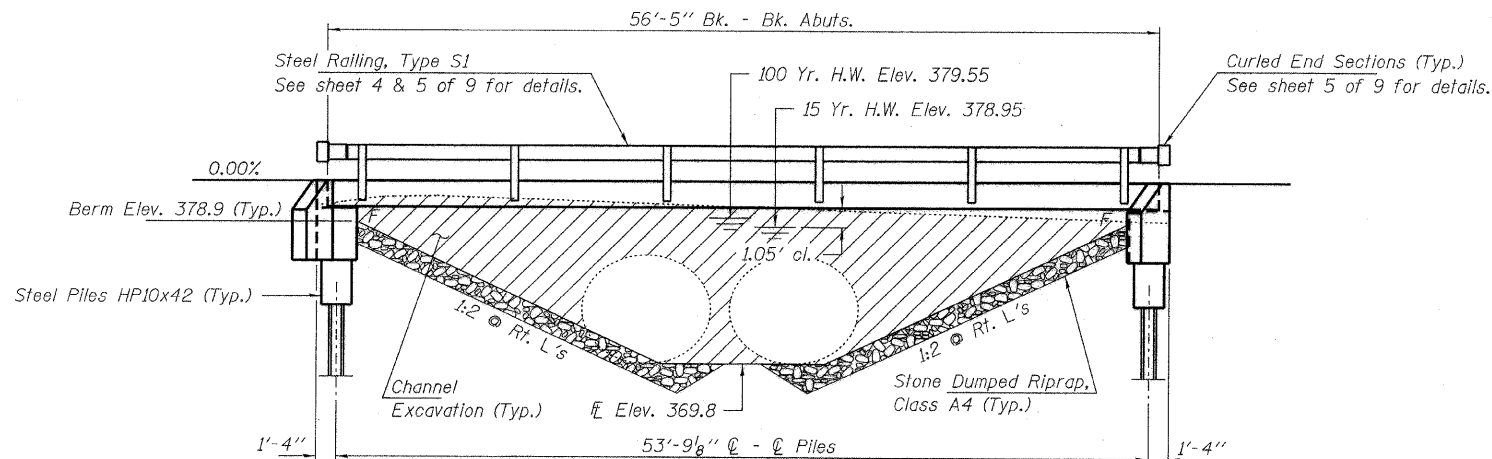
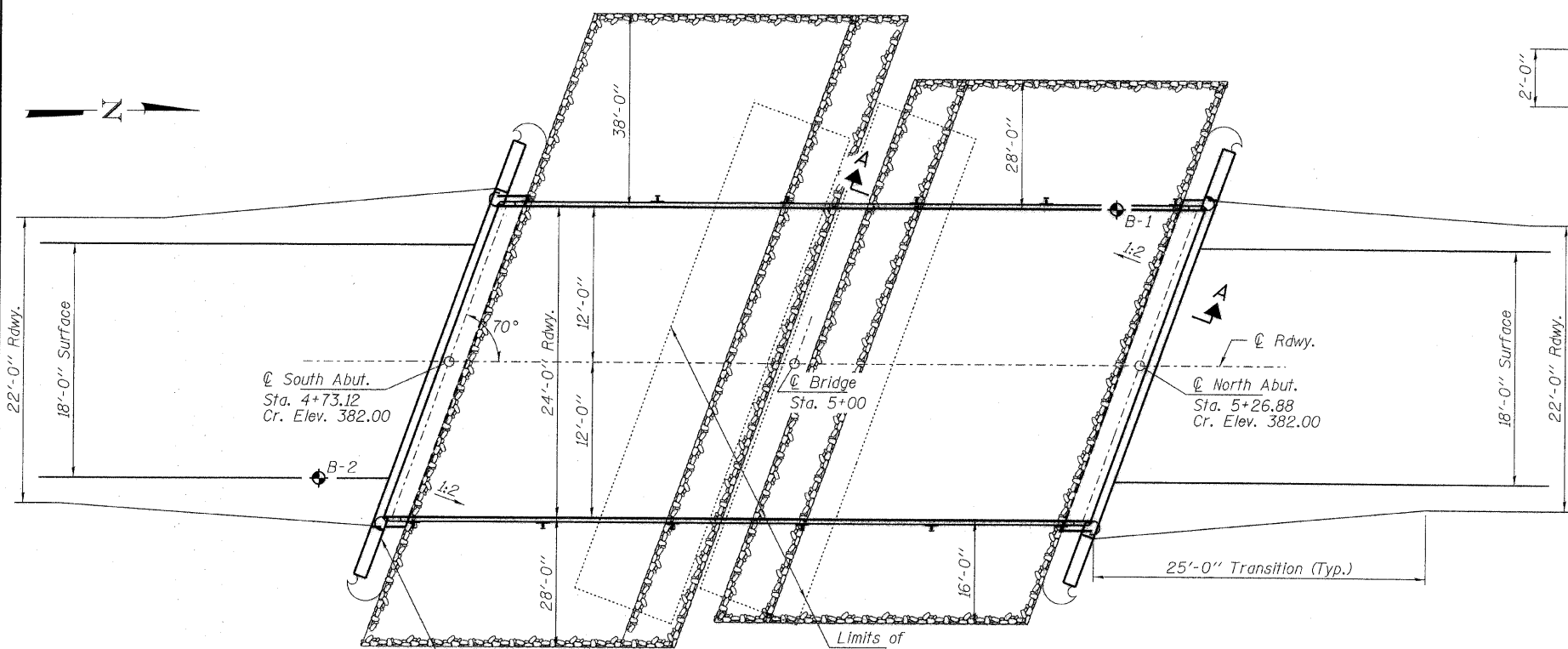


EXISTING STRUCTURE: STA. 4+98.5;
Structure Number 097-3043; Two-9' Diameter Tank Cars. Length = 40'

No Salvage.



ELEVATION



PLAN

DESIGN STRESSES

FIELD UNITS

f'c = 3,500 psi
fy = 60,000 psi (Reinf.)

PRECAST PRESTRESSED UNITS

f'c = 6,000 psi
f'cl = 5,000 psi
fpu = 270,000 psi (1/2" low lax. strands)
fpbt = 201,960 psi (1/2" low lax. strands)
fy = 60,000 psi (Reinf.)

LOADING HL-93

Design Specifications: 2010 AASHTO LRFD with all applicable Interims.
50#/Sq. Ft. Included in dead load for future wearing surface.

DESIGNED - A.S.L.
CHECKED - S.W.M.
DRAWN - D.T.M.
CHECKED - S.W.M.

SEISMIC DATA

Seismic Performance Zone (SPZ) = 3
Design Spectral Acceleration at 1.0 sec. (Sp1) = 0.316g
Design Spectral Acceleration at 0.2 sec. (Sp5) = 0.745g
Soil Site Class = D

WATERWAY INFORMATION

Drainage Area = 3.73 Sq. Mi.		Existing Low Grade Elev. 377.1 @ Sta. 5+30		Proposed Low Grade Elev. 378.9 @ Sta. 8+00		
Flood	Freq. Yr.	Q C.F.S.	Opening Sq. Ft. Exist. Prop.	Natural H.W.E. Exist. Prop.	Head - Ft. Exist. Prop.	Headwater EL. Exist. Prop.
Design	15	1554	127 272.5	378.95 0	0.37	378.95 374.32
Base	100	2690	127 300.7	379.55 0.05	0.97	379.60 380.52
Max. Calc.	500					

GENERAL NOTES

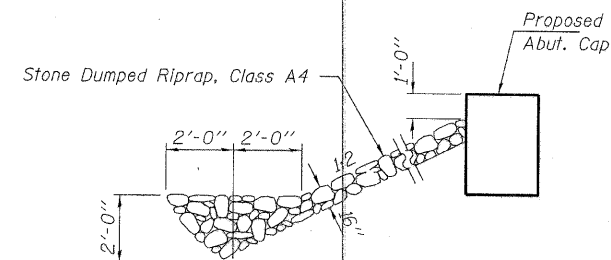
Layout of the slope protection system may be varied to suit ground conditions in the field as directed by the Engineer.
The Contractor shall drive test piles to 110% of the nominal required bearing specified in production locations at South Abutment or approved by the Engineer before ordering the remainder of piles.
Reinforcement bars shall conform to the requirements of ASTM A 706 Gr 60 (IL Modified). See Special Provisions.
Excavation required to construct the Abutments shall be included in the cost of Concrete Structures. No additional compensation will be allowed for Structure Excavation.
All proposed construction activities shall be in accordance with Nationwide Permit number 14 of the Department of the Army authorized under Section 404 of the Clean Water Act.
The IEPA has issued Section 401 Water Quality Certification for this activity. See Special Provisions for conditions.

BUILT 201 BY
WHITE COUNTY
SEC. 07-08137-00-BR
INDIAN CREEK ROAD DISTRICT
STR. NO. 097-3273
LOADING HL-93

NAME PLATE
See Std. 515001

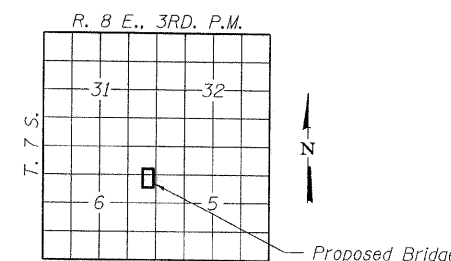
INDEX OF STRUCTURE SHEETS

1. General Plan & Elevation
2. Superstructure
- 3-4. Superstructure Details
5. Steel Railing, Type S-1
6. Abutments
7. HP Pile Details
- 8-9. Borings



SECTION A-A

Note: See Special Provisions for Stone Dumped Riprap, Class A4.



LOCATION SKETCH

TOTAL BILL OF MATERIAL

ITEM	UNIT	SUPER	SUB	TOTAL
Channel Excavation	Cu. Yd.			440
Stone Dumped Riprap, Class A4	Ton			350
Removal of Existing Structures	Each			1
Concrete Structures	Cu. Yd.		23.8	23.8
Concrete Encasement	Cu. Yd.		2.8	2.8
Precast Prestressed Concrete Deck Beams (21" Depth)	Sq. Ft.	1,320		1,320
Reinforcement Bars	Pound		2,530	2,530
Steel Railing, Type S1	Foot	106		106
Furnishing Steel Piles HP10x42	Foot		490	490
Driving Piles	Foot		490	490
Test Pile Steel HP10x42	Each		1	1
Name Plates	Each		1	1

I certify that to the best of my knowledge, information and belief, this bridge design is structurally adequate for the design loading shown on the plans. The design is an economical one for the style of structure and complies with requirements of the current "AASHTO LRFD Specifications."

Steven W. Megginson 2/10/11
ILLINOIS STRUCTURAL ENGINEER NO. 081-6064



Expires 11-30-2012

GENERAL PLAN AND ELEVATION
STRUCTURE NO. 097-3273

HAMPTON, LENZINI AND RENWICK, INC. CIVIL ENGINEERS - STRUCTURAL ENGINEERS - LAND SURVEYORS HLR 3086 STEVENSON DRIVE, SUITE 201 SPRINGFIELD, ILLINOIS 62703 217.546.3400 www.hlrengineering.com 184.000659 ILLINOIS PROFESSIONAL DESIGN FIRM LS / PE / SE CORPORATION PROJECT NUMBER: 09.0056.130 DATE: 02/10/11	SHEET NO. 1	T.R.	SECTION	COUNTY	TOTAL SHEETS	SHEET NO.
	9 SHEETS	28A	07-08137-00-BR	WHITE	13	5
			INDIAN CREEK ROAD DISTRICT	CONTRACT NO. 99441		
			FED. ROAD DIST. NO.	ILLINOIS	FED. AID PROJECT BROS-193(38)	