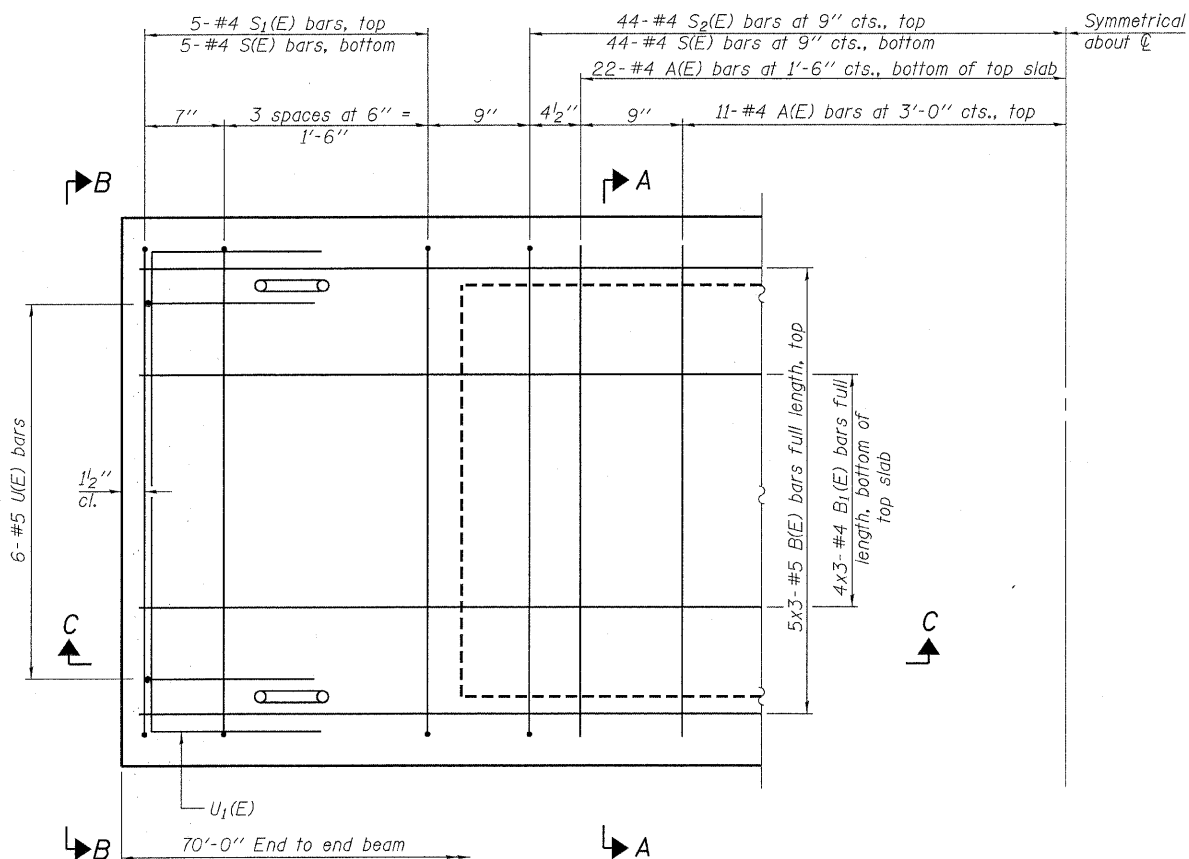
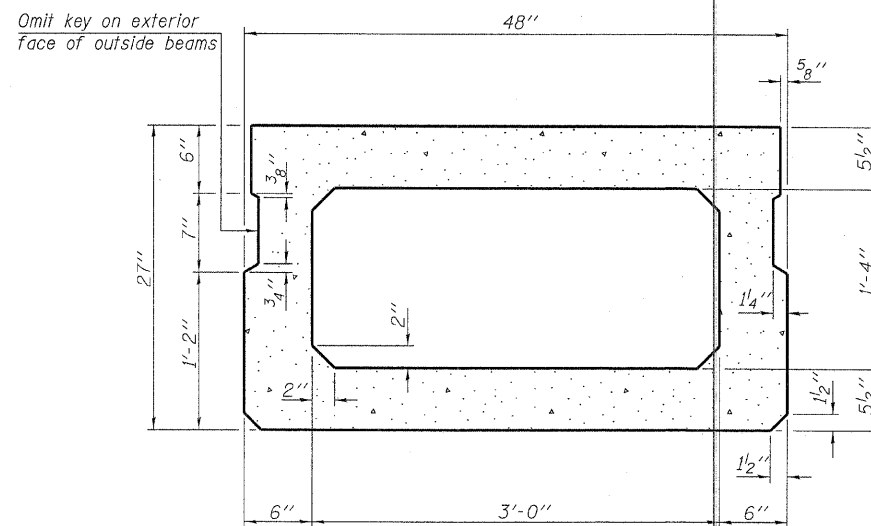


SECTION C-C

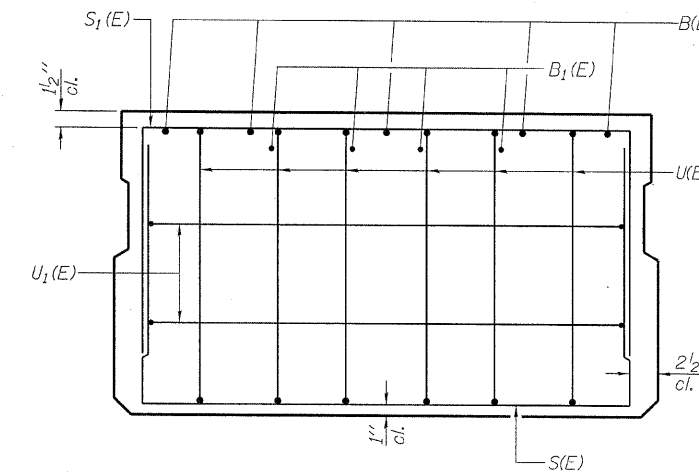


PLAN VIEW

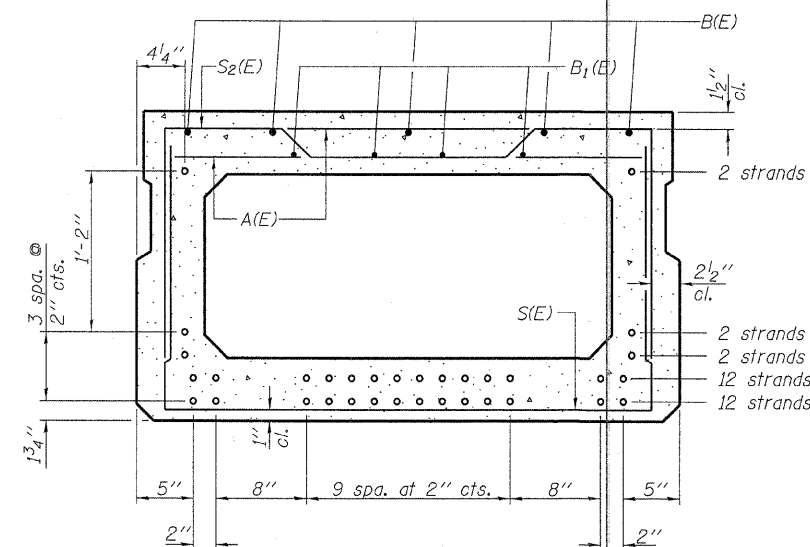
Note: Spacing of S(E) and S2(E) bars may be adjusted up to 4" in the immediate area of the transverse tie diaphragms to miss the block outs for the transverse ties.



SECTION A-A
(Showing dimensions)



VIEW B-B



SECTION A-A
(Showing reinforcement and permissible strand locations)

Note: Place the number of strands specified in each row symmetrically about the centerline of beam in the permissible strand locations shown.

BAR LIST
ONE BEAM ONLY

(For information only)

Bar	No.	Size	Length	Shape
A(E)	66	#4	3'-7"	—
B(E)	15	#5	24'-11"	—
B1(E)	12	#4	24'-7"	—
S(E)	98	#4	7'-5"	U
S1(E)	10	#4	6'-11"	U
S2(E)	88	#4	7'-2"	U
U(E)	12	#5	4'-6"	C
U1(E)	4	#4	6'-0"	U

Note: See sheet 3 & 4 of 9 for additional details and Bill of Material.

MINIMUM BAR LAP

#4 bar = 2'-0"
#5 bar = 2'-6"

DESIGNED - S.W.M.
CHECKED - V.J.H.
DRAWN - D.T.M.
CHECKED - S.W.M.

PD-2748-0

11-1-09

HAMPTON, LENZINI AND RENWICK, INC.
 CIVIL ENGINEERS - STRUCTURAL ENGINEERS - LAND SURVEYORS
 3085 STEVENSON DRIVE, SUITE 201
 SPRINGFIELD, ILLINOIS 62703
 217.546.3400 www.hlrengineering.com

184.000969
 ILLINOIS PROFESSIONAL DESIGN FIRM LS / PE / SE CORPORATION

PROJECT NUMBER: 09.0069.130 DATE: 04/27/10

SHEET NO. 2
9 SHEETS

T.R.	SECTION	COUNTY	TOTAL SHEETS	SHEET NO.
454	08-01116-00-BR	HAMILTON	13	6
BEAVER CREEK ROAD DISTRICT		CONTRACT NO. 99442		
FED. ROAD DIST. NO.	ILLINOIS	FED. AID PROJECT BROS-065(045)		

SUPERSTRUCTURE
27" X 48" PPC DECK BEAM
STRUCTURE NO. 033-3313