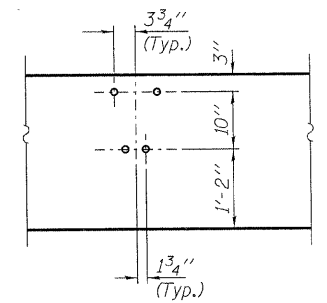
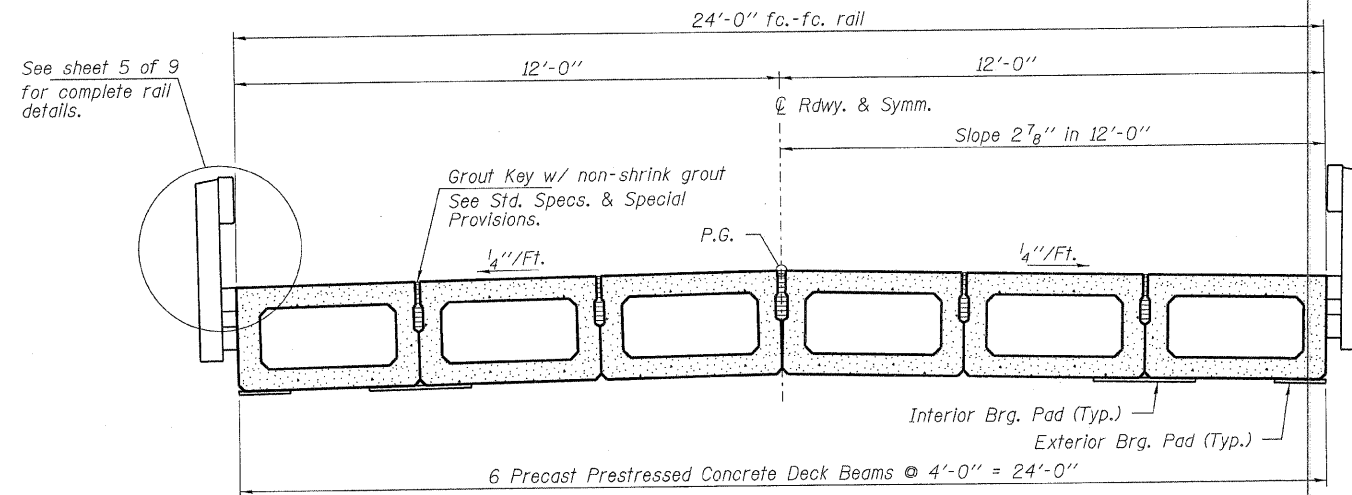


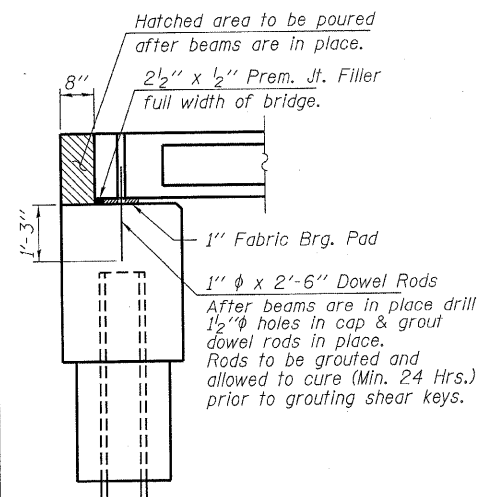
**ELEVATION**  
Showing Rail Post Spaces  
See sheet 5 of 9 for Railing Details.



**DETAIL A**



**CROSS SECTION**  
See sheets 2 & 3 of 9 for Superstructure.



**SECTION AT ABUTMENTS**  
© Rt. L's

DESIGNED - S.W.M.
CHECKED - V.J.H.
DRAWN - D.T.M.
CHECKED - S.W.M.

**SUPERSTRUCTURE DETAILS**  
**STRUCTURE NO. 033-3313**

<b>HAMPTON, LENZINI AND RENWICK, INC.</b> CIVIL ENGINEERS - STRUCTURAL ENGINEERS - LAND SURVEYORS <b>HLR</b> 3085 STEVENSON DRIVE, SUITE 201 SPRINGFIELD, ILLINOIS 62703 217.546.3400 www.hlrengineering.com 184.000659 ILLINOIS PROFESSIONAL DESIGN FIRM LS / PE / SE CORPORATION PROJECT NUMBER: 09.0099.130 DATE: 04/27/10	SHEET NO. 4	T.R.	SECTION	COUNTY	TOTAL SHEETS	SHEET NO.
	9 SHEETS	454	08-01116-00-BR	HAMILTON	13	8
			BEAVER CREEK ROAD DISTRICT	CONTRACT NO. 99442		
			FED. ROAD DIST. NO.	ILLINOIS FED. AID PROJECT BR05-065(045)		