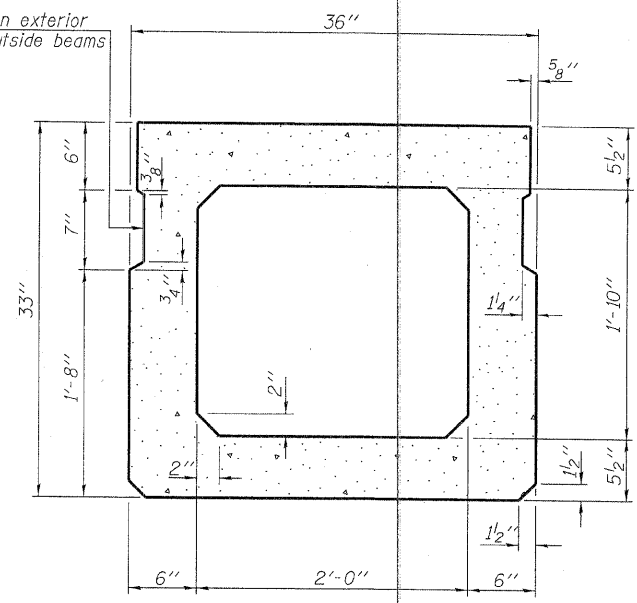
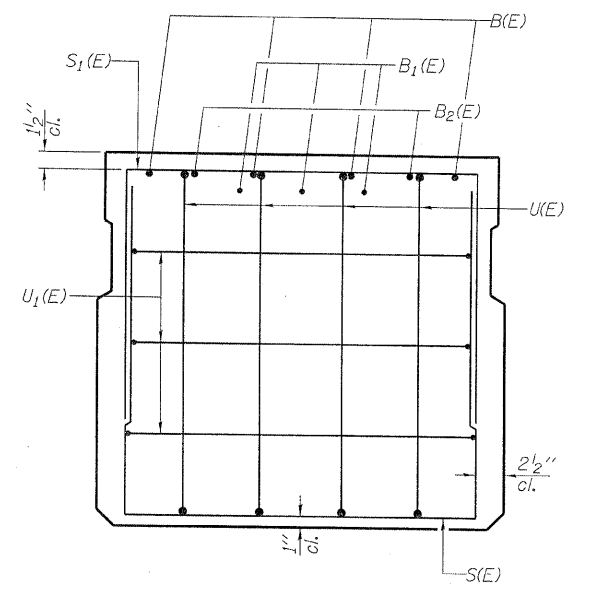


**SECTION A-A**

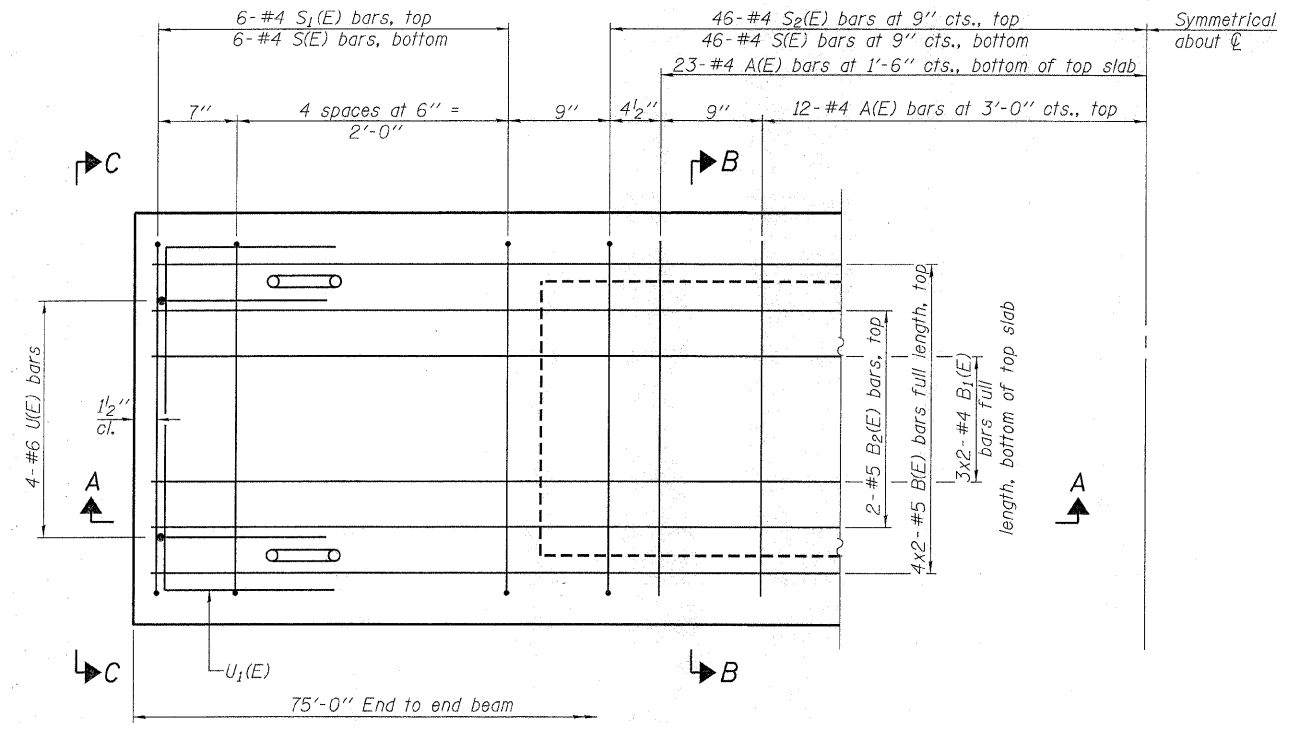
Omit key on exterior face of outside beams



**SECTION B-B**  
(Showing dimensions)

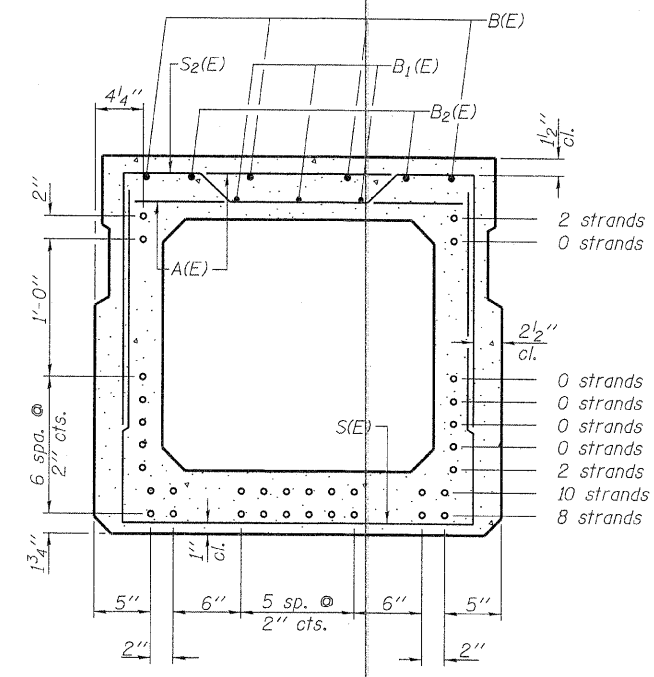


**VIEW C-C**



**PLAN VIEW**

Symmetrical about C



**SECTION B-B**  
(Showing reinforcement and permissible strand locations)

Note: Place the number of strands specified in each row symmetrically about the centerline of beam in the permissible strand locations shown.

**BAR LIST**  
**ONE BEAM ONLY**  
(For information only)

Bar	No.	Size	Length	Shape
A(E)	70	#4	2'-7"	—
B(E)	8	#5	38'-8"	—
B1(E)	6	#4	38'-8"	—
B2(E)	4	#5	10'-0"	—
S(E)	104	#4	7'-5"	—
S1(E)	12	#4	6'-3"	U
S2(E)	92	#4	6'-6"	U
U(E)	8	#6	5'-0"	C
U1(E)	6	#4	5'-0"	U

Note: See sheets 3 & 4 of 8 for additional details and Bill of Material.

Note:  
Spacing of S(E) and S2(E) bars may be adjusted up to 4" in the immediate area of the transverse tie diaphragms to miss the block outs for the transverse ties.  
Bars indicated thus 4x2-#5 etc. indicates 4 lines of bars with 2 lengths per line.

**MINIMUM BAR LAP**

#4 bar = 2'-0"  
#5 bar = 2'-6"

PD-3336-0 7-1-10

FILE NAME = 090262-sht-bridge.dgn	USER NAME =	DESIGNED - A.S.L.	REVISED -
HAMPTON, LENZINI AND RENWICK, INC. 3033 STEVENSON DRIVE, SUITE 201 SPRINGFIELD, ILLINOIS 62703	PLOT SCALE =	CHECKED - S.W.M.	REVISED -
ILLINOIS PROFESSIONAL DESIGN FIRM L3 / P.E. / S.E. CORP. 184-000289	PLOT DATE = 2/16/2011	DRAWN - D.A.B.	REVISED -
		CHECKED - S.W.M.	REVISED -

**STATE OF ILLINOIS**  
**HAMILTON COUNTY HIGHWAY DEPARTMENT**

**33" x 36" PPC DECK BEAM**  
**STRUCTURE NO. 033-3314**  
SHEET NO. 2 OF 8 SHEETS

T.R.	SECTION	COUNTY	TOTAL SHEETS	SHEET NO.
296B	08-09114-00-BR	HAMILTON	12	6
SOUTH CROUCH ROAD DISTRICT		CONTRACT NO. 99454		
ILLINOIS FED. AID PROJECT BROS-0105(049)				