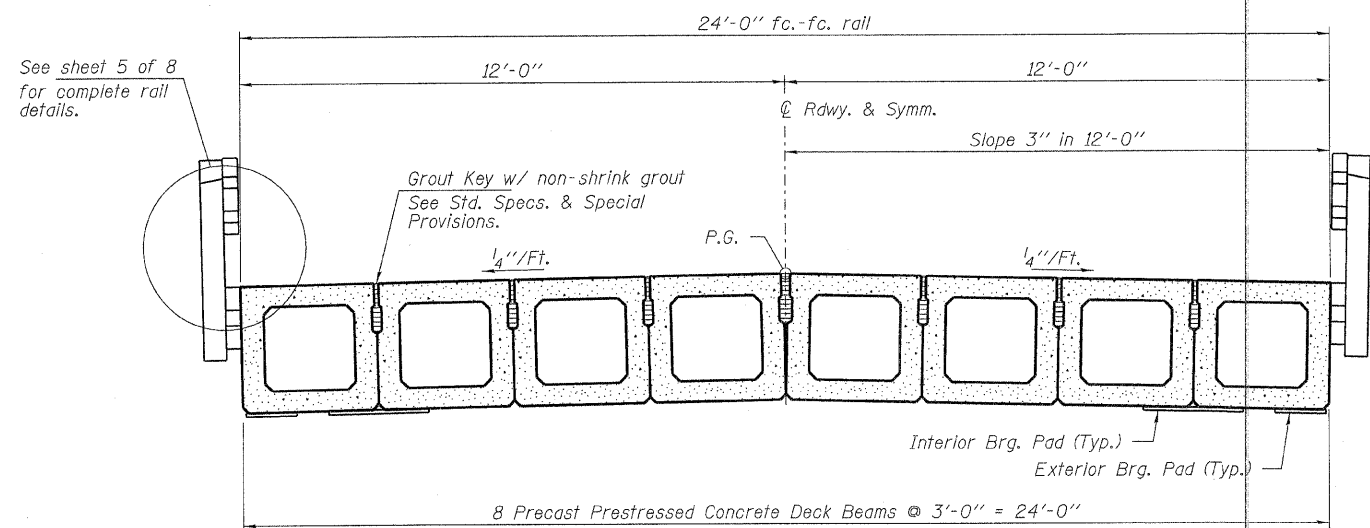
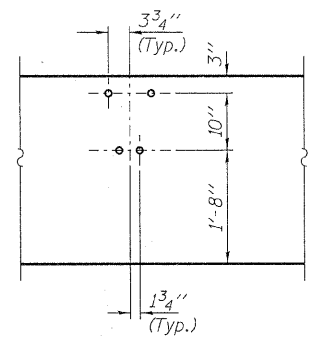


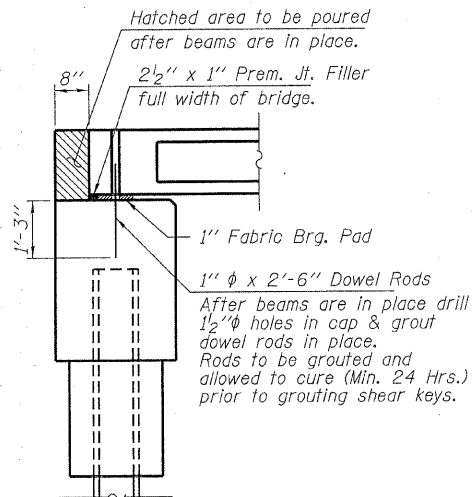
ELEVATION
Showing Rail Post Spaces
See sheet 5 of 8 for Railing Details.



CROSS SECTION
See sheets 2 & 3 of 8 for Superstructure.



DETAIL A



SECTION AT ABUTMENTS
© Rt. L's

FILE NAME = 090262-sht-bridge.dgn	USER NAME =	DESIGNED - A.S.L.	REVISED -	STATE OF ILLINOIS HAMILTON COUNTY HIGHWAY DEPARTMENT	SUPERSTRUCTURE DETAILS STRUCTURE NO. 033-3314	T.R.	SECTION	COUNTY	TOTAL SHEETS	SHEET NO.	
HAMPTON, LENZINI AND RENWICK, INC. 2005 STEVENSON DRIVE, SUITE 201 SPRINGFIELD, ILLINOIS 62703	PLOT SCALE =	CHECKED - S.W.M.	REVISED -			296B	08-09114-00-BR	HAMILTON	12	8	
HLR ILLINOIS PROFESSIONAL DESIGN FIRM 157 P.E. / REG. COMP. 184-000269	PLOT DATE = 2/16/2011	DRAWN - D.A.B.	REVISED -			SOUTH CROUCH ROAD DISTRICT		CONTRACT NO. 99454		ILLINOIS FED. AID PROJECT BRCS-0105(049)	
		CHECKED - S.W.M.	REVISED -			SHEET NO. 4 OF 8 SHEETS					