

STATE OF ILLINOIS  
DEPARTMENT OF TRANSPORTATION

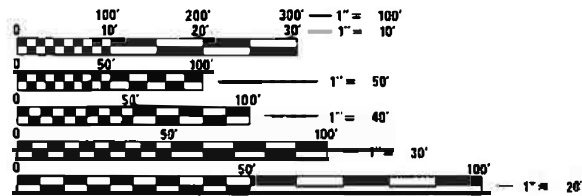
F.A. RTE.	SECTION	COUNTY	TOTAL SHEETS	SHEET NO.
VAR.	D5 ITS 2023-1	VARIOUS	28	1
ILLINOIS			CONTRACT NO. 70F54	

FOR INDEX OF SHEETS, SEE SHEET NO. 2

# PROPOSED HIGHWAY PLANS

VARIOUS ROUTES  
SECTION D5 ITS 2023-1  
ITS  
VARIOUS COUNTIES

C-95-068-21



FULL SIZE PLANS HAVE BEEN PREPARED USING STANDARD ENGINEERING SCALES. REDUCED SIZED PLANS WILL NOT CONFORM TO STANDARD SCALES. IN MAKING MEASUREMENTS ON REDUCED PLANS, THE ABOVE SCALES MAY BE USED.

J.U.L.I.E.  
JOINT UTILITY LOCATION INFORMATION FOR EXCAVATORS  
1-800-892-0123  
OR 811

PROJECT ENGINEER JEFF ALLEN  
PROJECT MANAGER ROGER BIGGS

CONTRACT NO. 70F54

SEE PAGE 4 & 5 FOR LOCATION MAP AND COORDINATES

STATE OF ILLINOIS  
DEPARTMENT OF TRANSPORTATION

SUBMITTED 3/24 2022  
Kensila Barnett sww  
REGIONAL ENGINEER

May 13, 2022 [Signature]  
ENGINEER OF DESIGN AND ENVIRONMENT

May 13, 2022 [Signature]  
DIRECTOR OF HIGHWAYS PROJECT IMPLEMENTATION

PRINTED BY THE AUTHORITY  
OF THE STATE OF ILLINOIS

GENERAL NOTES

- 1 THE FINAL LOCATIONS OF ALL ITS ITEMS SHALL BE VERIFIED BY THE ENGINEER IN THE FIELD.
- 2 PLAN SHEETS ARE NOT PROVIDED FOR THE REPLACEMENT OF EXISTING CCTV CAMERAS. HOWEVER A DATA SHEET IS PROVIDED THAT PROVIDES THE LOCATION VIA LAT. AND LONG. COORDINATES; PROGRAMMING DATA VIA (IP ADDRESS, SUBNET AND GATEWAY DATA; TRAFFIC CONTROL AND PROTECTION STANDARDS AND ESTIMATED LENGTH OF CAT. 6 CABLE TO INTERFACE.
- 3 EXISTING CAMERA SHALL BE RETURNED TO DEPARTMENT PER SPECIAL PROVISION

STANDARDS TO BE INCLUDED IN THE PLANS

000001-08	STANDARD SYMBOLS, ABBREVIATIONS AND PATTERNS
001001-02	AREAS OF REINFORCEMENT BARS
001006	DECIMAL OF AN INCH AND OF A FOOT
701101-05	OFF-ROAD OPERATIONS, MULTILANE, MORE THAN 15' (4.5 m) TO 24" (600 MM) FROM PAVMENT EDGE
701106-02	OFF-ROAD OPERATIONS, MULTILANE, 15' (4.5 m) TO 24" (600 MM) FROM I
701201-05	LANE CLOSER, 2L, 2W, DAY ONLY FOR SPEEDS ≥ 45 MPH
701400-11	APPROACH TO LANE CLOSER, FREEWAY/EXPRESSWAY
701411-09	LANE CLOSER, MULTILANE, AT ENTRANCE OR EXIT RAMP, FOR SPEEDS ≥ 45 MPH
701501-06	URBAN LANE CLOSURE, 2L, 2W, UNDIVIDED
701502-09	URBAN LANE CLOSURE, 2L, 2W, WITH BIDIRECTIONAL LEFT TURN LANE
701601-09	URBAN LANE CLOSURE, MULTILANE, 1W OR 2W WITH NONTRAVERSABLE MEDIAN
701701-10	URBAN LANE CLOSURE, MULTILANE INTERSECTION
701901-08	TRAFFIC CONTROL DEVICES
720016-04	MAST ARM MOUNTED STREET NAME SIGNS
814001-03	HANDHOLES
878001-11	CONCRETE FOUNDATION DETAILS
701401-13	LANE CLOSURE, FREEWAY/EXPRESSWAY
701406-13	LANE CLOSURE, FREEWAY/EXPRESSWAY, DAY OPERATIONS ONLY

INDEX OF SHEETS

- |       |   |
|-------|---|
| 1     | COVER SHEET   |
| 2     | GENERAL NOTES, STANDARDS TO BE INCLUDED IN PLANS, INDEX OF SHEETS |
| 3 - 4 | SUMMARY OF QUANTITIES   |
| 5     | LOCATION MAP FOR NEW SUREVIELLANCE LOCATIONS                      |
| 6     | LOCATION AND DATA SHEET FOR CCTV CAMERA REPLACEMENTS              |

PROPOSED SURVEILLANCE INSTALLATION PLAN SHEETS

- |    |   |
|----|---|
| 7  | I-55 & U.S. 24 - CHENOA - MCLEAN COUNTY                             |
| 8  | I-55 & COUNTY HIGHWAY 8 - LEXINGTON - MCLEAN COUNTY                 |
| 9  | I-55 & HISTORIC U.S. 66 (N 1900 E RD) - TOWANDA - MCLEAN COUNTY     |
| 10 | I-74 & COUNTY HIGHWAY 36 - DOWNS - MCLEAN COUNTY                    |
| 11 | I-74 & HIGHWAY 942 (CHESTNUT ST) - LEROY - MCLEAN COUNTY            |
| 12 | I-74 & U.S. 136 - MCLEAN COUNTY                                     |
| 13 | I-55 & U.S. 136 - MCLEAN - MCLEAN COUNTY                            |
| 14 | I-74 & COUNTY RD 2050 N (W WASHINGTON ST) - CARLOCK - MCLEAN COUNTY |
| 15 | I-74 & IL 54 - FAERMER CITY - PIATT COUNTY                          |
| 16 | I-74 & COUNTY HIGHWAY 2 - MANSFIELD - PIATT COUNTY                  |
| 17 | I-74 & PRAIRIEVIEW RD - MAHOMET - CHAMPAIGN COUNTY                  |
| 18 | I-57 & MONTICELLO RD - SAVOY - CHAMPAIGN COUNTY                     |
| 19 | I-72 & IL 47 - CHAMPAIGN COUNTY                                     |
| 20 | I-72 & IL 10 - PIATT COUNTY   |
| 21 | I-72 & OLD RT 47 - WHITEHEATH - PIATT COUNTY                        |
| 22 | I-72 & IL 105 (MARKET ST) - MONTICELLO - PIATT COUNTY               |
| 23 | I-72 & BRIDGE ST - MONTICELLO - PIATT COUNTY                        |
| 24 | I-72 & IL 48 - CISCO - PIATT COUNTY                                 |
| 25 | I-57 & IL 133 - ARCOLA - DOUGLAS COUNTY                             |
| 26 | I-39 & U.S. 51 BUS. - NORMAL - MCLEAN COUNTY                        |
| 27 | I-39 & FRANKLIN AVE - HUDSON - MCLEAN COUNTY                        |
| 28 | I-39 & IL 251 - KAPPA - MCLEAN COUNTY                               |

MODEL: \\MODELNAME\$  
FILE: \\MODEL: \\PROJECT\Documents\DOT\_Offices\District\_5\Projects\057054\CD\Drawings\Cover\_Sheet\_general\_notes\_index\_500.dgn

USER NAME = biggsrd	DESIGNED -	REVISED -
	DRAWN -	REVISED -
PLOT SCALE = 100.0000' / in.	CHECKED -	REVISED -
PLOT DATE = 3/28/2022	DATE -	REVISED -

**STATE OF ILLINOIS  
DEPARTMENT OF TRANSPORTATION**

**GENERAL NOTES, STANDARDS TO BE IN THE PLANS  
INDEX**

SCALE: SHEET OF SHEETS STA. TO STA.

F.A. RTE.	SECTION	COUNTY	TOTAL SHEETS	SHEET NO.
VAR.	D5 ITS 2023-1	VARIOUS	28	2
			CONTRACT NO. 70F54	
ILLINOIS FED. AID PROJECT				



# SUMMARY OF QUANTITIES

LOCATION OF WORK:      **VARIOUS  
COUNTIES  
VARIOUS  
ROUTES  
100% STATE**

CONSTRUCTION TYPE CODE:      **0021**

CODE NO.	ITEM	UNIT	TOTAL QUANTITY
67100100	MOBILIZATION	L SUM	1.0
70100420	TRAFFIC CONTROL AND PROTECTION, STANDARD 701411	EACH	5.0
70100450	TRAFFIC CONTROL AND PROTECTION, STANDARD 701201	L SUM	1.0
70100700	TRAFFIC CONTROL AND PROTECTION, STANDARD 701406	L SUM	1.0
70100800	TRAFFIC CONTROL AND PROTECTION, STANDARD 701401	L SUM	1.0
70102620	TRAFFIC CONTROL AND PROTECTION, STANDARD 701501	L SUM	1.0
70102622	TRAFFIC CONTROL AND PROTECTION, STANDARD 701502	L SUM	1.0
70102630	TRAFFIC CONTROL AND PROTECTION, STANDARD 701601	L SUM	1.0
70102635	TRAFFIC CONTROL AND PROTECTION, STANDARD 701701	L SUM	1.0
81028350	UNDERGROUND CONDUIT, PVC, 2" DIA.	FOOT	22,911.0
81400100	HANDHOLE	EACH	48.0
87300901	ELECTRIC CABLE IN CONDUIT, TRACER, NO. 12 1C	FOOT	16,078.0
87800415	CONCRETE FOUNDATION, TYPE E 36-INCH DIAMETER	FOOT	176.0
87900200	DRILL EXISTING HANDHOLE	EACH	4.0

MODEL: \\MODEL\MAME  
 FILE: \\MAILS\_PUB\Public\paw\_bentley.com\FW\DOT\Documents\DOT\_Offices\Dir\dir: S:\Project\057054\CADD\Drawn\Drawn\Cover Sheet - general notes - index - S00.dgn

USER NAME = blggsrd	DESIGNED -	REVISED -
	DRAWN -	REVISED -
PLOT SCALE = 100,0000' / in.	CHECKED -	REVISED -
PLOT DATE = 3/28/2022	DATE -	REVISED -

**STATE OF ILLINOIS  
DEPARTMENT OF TRANSPORTATION**

**SUMMARY OF QUANTITIES**

SCALE:      SHEET 1      OF 2      SHEETS      STA.      TO STA.

F.A. RTE.	SECTION	COUNTY	TOTAL SHEETS	SHEET NO.
VAR.	D5 ITS 2023-1	VARIOUS	28	3
			CONTRACT NO. 70F54	
			ILLINOIS FED. AID PROJECT	

# SUMMARY OF QUANTITIES

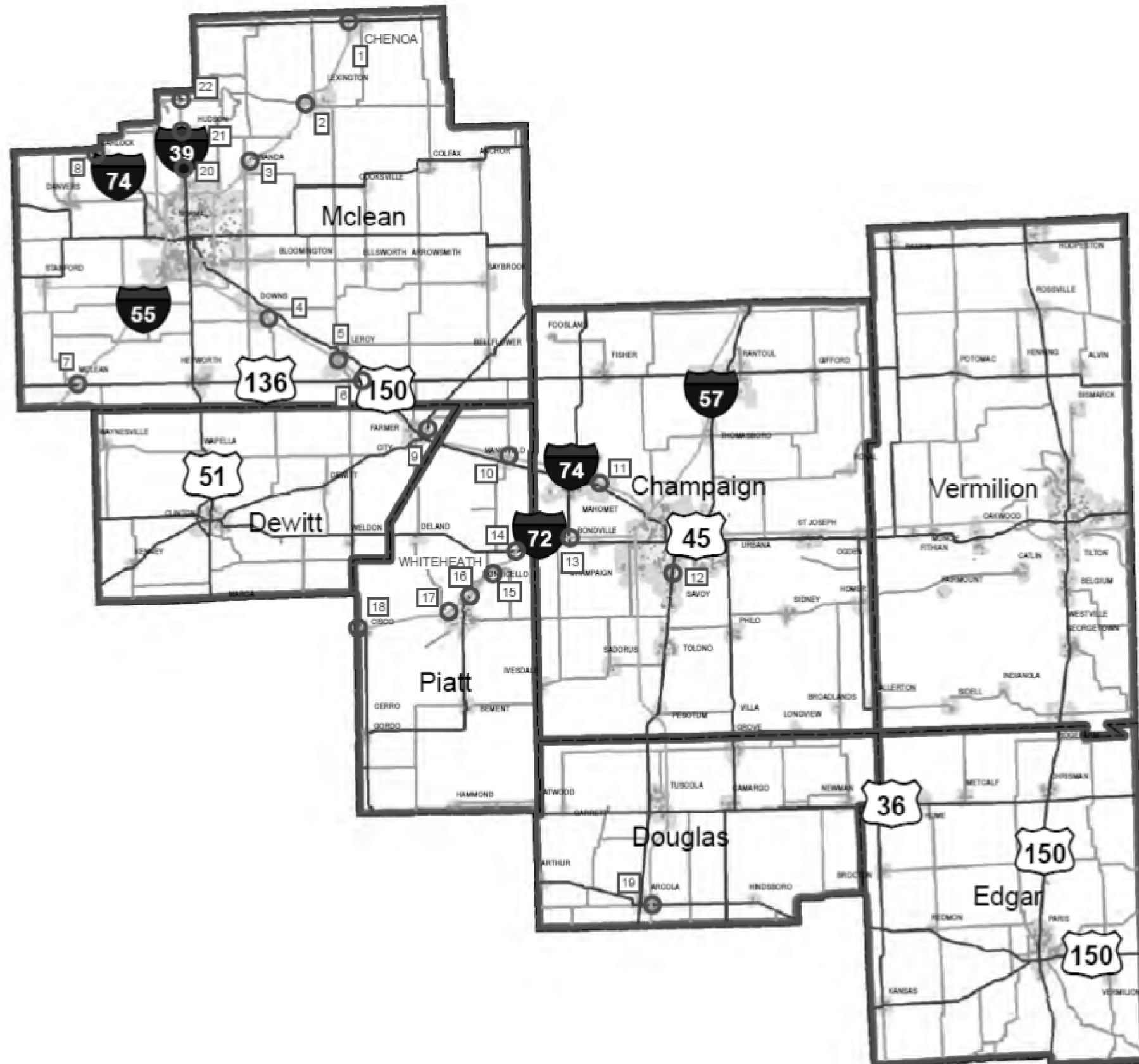
**LOCATION OF WORK:**            **VARIOUS  
COUNTIES  
VARIOUS  
ROUTES  
100% STATE**

**CONSTRUCTION TYPE CODE:**    **0021**

CODE NO.	ITEM	UNIT	TOTAL QUANTITY
X0323906	CAMERA POLE, 45 FT	EACH	22.0
X0324597	CLOSED CIRCUIT TELEVISION CABINET	EACH	22.0
X0326266	ETHERNET SWITCH	EACH	22.0
X0326905	CLOSED CIRCUIT TELEVISION DOME CAMERA, IP BASED	EACH	22.0
X1400006	FIBER OPTIC CABLE IN CONDUIT, 12 FIBERS, SINGLE MODE	FOOT	18,750.0
X1400127	CAT. 6 ETHERNET CABLE	FOOT	11,117.0
X1400393	REPLACE EXISTING CCTV CAMERA, POLE MOUNT, 50 FT. M. H.	EACH	72.0
X8710052	FIBER OPTIC TERMINATION PANEL, 12 FIBER, FO TERM PANEL 12F	EACH	22.0
X8730105	ELECTRIC CABLE IN CONDUIT, SIGNAL NO. 10 3C	FOOT	17,649.0

MODEL: s:\MODEL\MNF5  
 FILE: mnf5.pia\blu\blu\paw\bea\paw.com\P\W\DOT\Documents\DOT\Office\Dir\Dir: S:\Project\0570F54\CAD\data\Design\Cover Sheet\_general\_notes\_index\_SQO.dgn

# ILLINOIS DEPT. OF TRANSPORTATION DISTRICT 5



**PROPOSED PTZ CAMERA/INTERCHANGE LOCATIONS  
PER ORDER OF PLAN SHEETS**

- 1 I-55 @ U.S. 24 (Chenoa)
- 2 I-55 @ Lexington
- 3 I-55 @ Towanda
- 4 I-74 @ Downs
- 5 I-74 @ Leroy
- 6 I-74 & U.S. 136
- 7 I-55 @ Mclean (U.S. 136)
- 8 I-74 @ Carlock
- 9 I-74 @ Farmer City
- 10 I-74 @ Mansfield
- 11 I-74 @ Mahomet (Prairieview Rd.)
- 12 I-57 & Monticello Rd. (Savoy)
- 13 I-72 & IL 47
- 14 I-72 & IL 10
- 15 I-72 @ Whiteheath
- 16 I-72 & IL 105 (Monticello)
- 17 I-72 & Bridge St. (Monticello)
- 18 I-72 & IL 48 (Cisco)
- 19 I-57 & IL 133 (Arcola)
- 20 I-39 & U.S. 51 Bus. (Normal)
- 21 I-39 @ Hudson
- 22 I-39 & IL 251 (Kappa)

MODEL: I:\MODEL\MAMFS  
 FILE: I:\MAMFS\_Plan\I-39\I-39\_Vermilion\DOT\_Offices\District\_5\Project\DOT570F54\CADD\Drawings\Cover Sheet\_general\_notes\_index\_S000.dgn

USER NAME = blggsrd	DESIGNED - _____	REVISED - _____
	DRAWN - _____	REVISED - _____
PLOT SCALE = 100,000' / in.	CHECKED - _____	REVISED - _____
PLOT DATE = 3/25/2022	DATE - _____	REVISED - _____

**STATE OF ILLINOIS  
DEPARTMENT OF TRANSPORTATION**

<b>LOCATION MAP NEW SURVEILLANCE POINTS</b>			
SCALE: _____	SHEET 1	OF 1 SHEETS	STA. _____ TO STA. _____

F.A. RTE.	SECTION	COUNTY	TOTAL SHEETS	SHEET NO.
VAR.	D5 ITS 2023-1	VARIOUS	28	5
				CONTRACT NO. 70F54
ILLINOIS FED. AID PROJECT				

REPLACE EXISTING CCTV CAMERA, POLE MOUNT, 50 FT. M.H.										Distance of Cat. 6 Cable FT.
Route	MM	Location	County	IP Address	Subnet	Gateway	Lat	Long	TC&P Standard	Camera to Interface panel
I-55/I-74	156.5	I-55 & I-74 SW Split	McLean	10.5.11.193	255.255.255.0	10.5.11.254	40°26'25.03"N	89° 1'9.99"W	701411	50
I-55/I-74	158.4	I-55/I-74 & Oakland	McLean	10.5.11.194	255.255.255.0	10.5.11.254	40°27'58.19"N	89° 1'52.65"W	701501	50
I-55/I-74	159.8	I-55/I-74 & Market	McLean	10.5.11.195	255.255.255.0	10.5.11.254	40°29'6.59"N	89° 1'44.75"W	701411	50
I-55/I-74	163.4	I-55 & I-74 NW Split	McLean	10.5.11.197	255.255.255.0	10.5.11.254	40°32'10.65"N	89° 1'28.92"W	701406	75
I-55	164.6	I-55 & I-39	McLean	10.5.11.198	255.255.255.0	10.5.42.254	40°32'18.98"N	89° 0'11.06"W	701406	50
I-55	164.9	I-55 & US 51 BR	McLean	10.5.11.199	255.255.255.0	10.5.11.254	40°32'19.00"N	88°59'44.40"W	701411	100
I-55	167.3	I-55 & Veteran's Parkway	McLean	10.5.11.200	255.255.255.0	10.5.11.254	40°32'15.30"N	88°56'58.39"W	701411	50
I-57	211.6	I-57 & US 36	Douglas	10.5.42.199	255.255.255.0	10.5.42.254	39°47'28.76"N	88°15'53.42"W	701406	50
I-57	219.7	I-57 & US 45 (Pesotum)	Champaign	10.5.42.198	255.255.255.0	10.5.42.254	39°54'18.86"N	88°16'43.82"W	701406	50
I-57	226.4	I-57 @ MP 226.4 (Pesotum VMS)	Champaign	10.5.42.91	255.255.255.0	10.5.42.254	39°59'45.39"N	88°18'12.54"W	701406	60
I-57	231.5	I-57 & Curtis Rd.	Champaign	10.5.42.195	255.255.255.0	10.5.42.254	40° 4'9.65"N	88°18'11.96"W	701601	50
I-57	235.0	I-57 & I-72	Champaign	10.5.42.194	255.255.255.0	10.5.42.254	40° 7'12.86"N	88°18'16.49"W	701406	50
I-57	236.9	I-57 @ MP 236.9 (Bloomington Rd.)	Champaign	10.5.42.180	255.255.255.0	10.5.42.254	40.142874°	-88.287105°	701201	50
I-57	237.7	I-57 @ MP 237.7 (Mattis Ave.)	Champaign	10.5.42.181	255.255.255.0	10.5.42.254	40.151836°	-88.276957°	701201	50
I-57	238.2	I-57 & Market St.	Champaign	10.5.42.193	255.255.255.0	10.5.42.254	40°10'51.74"N	88°14'41.62"W	701201	50
I-57	242.8	I-57 @ MP 242.8 (Rantoul VMS)	Champaign	10.5.42.92	255.255.255.0	10.5.42.254	40°12'31.18"N	88°13'4.44"W	701406	60
I-57	250.1	I-57 & US 136	Champaign	10.5.138.31	255.255.255.0	10.5.138.254	40°18'30.68"N	88°11'1.43"W	701411	50
I-72	178.3	I 72 @ MP 178.3 (I 72 EB VMS)	Champaign	10.5.42.93	255.255.255.0	10.5.42.254	40° 7'12.94"N	88°22'13.15"W	701406	60
I-74	125.2	I-74 & Rivian	McLean	10.5.11.196	255.255.255.0	10.5.11.254	40°32'22.56"N	89° 3'46.87"W	701601	50
I-74	135.5	I-74 & US 51	McLean	10.5.11.192	255.255.255.0	10.5.11.254	40°26'8.97"N	88°59'25.07"W	701601	50
I-74	171.8	I-74 & IL 47	Champaign	10.5.42.184	255.255.255.0	10.5.42.254	40.198577°	-88.397182°	701406	50
I-74	172.8	I-74 @ MP 172.8 (Mahomet VMS)	Champaign	10.5.42.94	255.255.255.0	10.5.42.254	40°11'30.23"N	88°22'50.92"W	701406	50
I-74	177.9	I-74 @ MP 177.9 (Duncan Rd)	Champaign	10.5.42.182	255.255.255.0	10.5.42.254	40.158025°	-88.298145°	701501	50
I-74	179.5	I-74 @ MP 179.5 (Mattis Ave.)	Champaign	10.5.42.183	255.255.255.0	10.5.42.254	40.140540°	-88.277122°	701423	50
I-74	180.6	I-74 & Prospect Ave.	Champaign	10.5.42.25	255.255.255.0	10.5.42.254	40° 8'5.09"N	88°15'28.10"W	701601	130
I-74	181.4	I-74 & Neil St.	Champaign	10.5.42.188	255.255.255.0	10.5.42.254	40° 8'4.06"N	88°14'36.64"W	701601	391
I-74	182.5	I-74 & Lincoln Ave.	Champaign	10.5.42.100	255.255.255.0	10.5.42.254	40° 8'7.26"N	88°13'9.77"W	701601	410
I-74	183.9	I-74 & Cunningham Ave.	Champaign	10.5.42.190	255.255.255.0	10.5.42.254	40° 8'1.60"N	88°11'45.84"W	701601	50
I-74	185.4	I-74 & University Ave.	Champaign	10.5.42.191	255.255.255.0	10.5.42.254	40° 7'17.97"N	88°10'24.14"W	701601	50
I-74	189.1	I-74 @ MP 189.1 (St Joe VMS)	Champaign	10.5.42.95	255.255.255.0	10.5.42.254	40° 7'14.85"N	88° 6'16.60"W	701406	50
I-74	215.9	I-74 & Bowman Ave.	Vermilion	192.168.100.4	255.255.255.0	192.168.100.254	40° 6'50.66"N	87°36'37.21"W	701601	50
VP		VP & Morris	McLean	10.5.11.37	255.255.255.0	10.5.11.254	40°27'29.24"N	89° 0'21.25"W	701701	357
VP		VP & US 51	McLean	10.5.11.191	255.255.255.0	10.5.11.254	40°27'33.38"N	88°59'32.72"W	701601	50
VP		VP & Morrissey	McLean	10.5.11.38	255.255.255.0	10.5.11.254	40°27'34.50"N	88°58'13.18"W	701701	475
VP		VP & Ireland Grove	McLean	10.5.11.58	255.255.255.0	10.5.11.254	40°27'48.77"N	88°57'26.98"W	701701	100
VP		VP & Oakland	McLean	10.5.11.40	255.255.255.0	10.5.11.254	40°28'24.05"N	88°57'7.60"W	701701	420
VP		VP & Washington	McLean	10.5.11.42	255.255.255.0	10.5.11.254	40°28'49.49"N	88°57'8.81"W	701701	450
VP		VP & Empire	McLean	10.5.11.14	255.255.255.0	10.5.11.254	40°29'18.08"N	88°57'11.17"W	701701	70
VP		VP & GE	McLean	10.5.11.45	255.255.255.0	10.5.11.254	40°30'8.95"N	88°57'9.76"W	701701	420
VP		VP & College	McLean	10.5.11.55	255.255.255.0	10.5.11.254	40°30'37.92"N	88°57'13.36"W	701701	80
VP		VP & Fort Jesse	McLean	10.5.11.209	255.255.255.0	10.5.11.254	40°31'2.45"N	88°57'11.51"W	701701	85
IL 9		IL 9 (Empire) & Towanda	McLean	10.5.11.8	255.255.255.0	10.5.11.254	40°29'17.83"N	88°58'12.74"W	701701	90
IL 9		IL 9 (Empire) & Hershey	McLean	10.5.11.17	255.255.255.0	10.5.11.254	40°29'17.63"N	88°56'33.80"W	701701	195
IL 9		IL 9 (Empire) & Towanda-Barnes	McLean	10.5.11.72	255.255.255.0	10.5.11.254	40°29'17.74"N	88°54'10.44"W	701701	100
US 150		Clinton & Oakland	McLean	10.5.11.48	255.255.255.0	10.5.11.254	40.473958°	-88.984278°	701701	190
US 51		US 51 & College	McLean	10.5.11.205	255.255.255.0	10.5.11.254	40°30'39.22"N	88°59'42.90"W	701701	195
US 45		US 45 & Church	Champaign	10.5.42.205	255.255.255.0	10.5.42.254	40° 3'16.70"N	88°15'4.36"W	701701	84
US 45		US 45 & Curtis	Champaign	10.5.42.203	255.255.255.0	10.5.42.254	40° 4'9.08"N	88°14'56.27"W	701701	160
US 45		US 45 & Windsor	Champaign	10.5.42.22	255.255.255.0	10.5.42.254	40° 5'1.66"N	88°14'47.98"W	701701	220
US 45		Neil St & Kirby	Champaign	10.5.42.19	255.255.255.0	10.5.42.254	40° 5'53.83"N	88°14'39.83"W	701701	80
US 45		Neil St. & Green	Champaign	10.5.42.17	255.255.255.0	10.5.42.254	40° 6'36.24"N	88°14'35.86"W	701701	225
US 45		US 45 & Chandler	Champaign	10.5.138.11	255.255.255.0	10.5.138.254	40.282893°	-88.170294°	701701	85
US 45		US 45 & US 136	Champaign	10.5.138.3	255.255.255.0	10.5.138.254	40.308096°	-88.155592°	701701	90
US 150		Prospect & Springfield	Champaign	10.5.42.30	255.255.255.0	10.5.42.254	40° 6'45.12"N	88°15'27.41"W	701701	200
US 150		Prospect & University	Champaign	10.5.42.29	255.255.255.0	10.5.42.254	40° 6'58.09"N	88°15'28.82"W	701701	75
US 150		Prospect & Bradley	Champaign	10.5.42.27	255.255.255.0	10.5.42.254	40° 7'37.25"N	88°15'29.35"W	701701	80
Mattis Ave.		Mattis & Springfield	Champaign	10.5.42.37	255.255.255.0	10.5.42.254	40° 6'46.67"N	88°16'37.52"W	701701	70
Mattis Ave.		Mattis & Church	Champaign	10.5.42.35	255.255.255.0	10.5.42.254	40° 7'5.91"N	88°16'37.62"W	701701	345
Mattis Ave.		Mattis & Bradley	Champaign	10.5.42.32	255.255.255.0	10.5.42.254	40° 7'38.21"N	192.168.11.254	701701	175
Mattis Ave.		Mattis & Bloomington	Champaign	10.5.42.31	255.255.255.0	10.5.42.254	40° 8'22.02"N	88°16'37.36"W	701701	225
US 150		Springfield & Neil	Champaign	10.5.42.6	255.255.255.0	10.5.42.254	40° 6'45.65"N	88°14'37.09"W	701701	175
US 150		Springfield & Wright	Champaign	10.5.42.47	255.255.255.0	10.5.42.254	40° 6'45.27"N	88°13'44.69"W	701701	100
US 150		University & Lincoln	Champaign	10.5.42.103	255.255.255.0	10.5.42.254	40° 6'59.46"N	88°13'9.22"W	701701	115
US 150		University & Cunningham	Champaign	10.5.42.108	255.255.255.0	10.5.42.254	40° 6'58.21"N	88°12'16.60"W	701701	350
US 150		University & High Cross	Champaign	10.5.42.118	255.255.255.0	10.5.42.254	40° 6'47.65"N	88° 9'44.63"W	701701	125
IL 1		Gilbert & Main	Vermilion	10.5.74.13	255.255.255.0	10.5.74.154	40° 7'27.51"N	87°38'7.50"W	701701	85
IL 1		Gilbert & Fairchild	Vermilion	10.5.74.9	255.255.255.0	10.5.74.154	40° 8'18.92"N	87°38'7.47"W	701701	75
IL 1		Vermilion & Fairchild	Vermilion	10.5.74.8	255.255.255.0	10.5.74.154	40° 8'18.27"N	87°37'49.25"W	701701	250
IL 1		Vermilion & Winter	Vermilion	10.5.74.5	255.255.255.0	10.5.74.154	40° 9'35.45"N	87°37'50.19"W	701701	250
IL 1		Vermilion & Lake Shore Dr.	Vermilion	10.5.74.3	255.255.255.0	10.5.74.154	40°10'21.63"N	87°37'50.89"W	701701	300
US 136		US 136 & Maplewood	Champaign	10.5.138.8	255.255.255.0	10.5.138.254	40.312214°	-88.136762°	701701	200
US 136		Main & Bowman	Vermilion	10.5.74.23	255.255.255.0	10.5.74.154	40° 7'35.16"N	87°36'43.17"W	701701	275

VP = Veteran's Parkway (I-55 Bus.; Historic U.S. 66

MODEL: I:\MODEL\MMF5  
FILE: Mattis\_PoleMount.tbl  
PROJECT: D:\Projects\2023\05\45\CD\Drawings\Cover Sheet - general - notes - index - SC00.dgn

USER NAME = biggsrd	DESIGNED - _____	REVISED - _____
	DRAWN - _____	REVISED - _____
PLOT SCALE = 100,0000' / in.	CHECKED - _____	REVISED - _____
PLOT DATE = 3/23/2022	DATE - _____	REVISED - _____

STATE OF ILLINOIS  
DEPARTMENT OF TRANSPORTATION

SCHEDULE OF REPLACEMENT CAMERAS  
IP ADDRESS; COORDINATES; TC&P

SCALE: \_\_\_\_\_ SHEET 1 OF 1 SHEETS STA. \_\_\_\_\_ TO STA. \_\_\_\_\_

F.A. RTÉ.	SECTION	COUNTY	TOTAL SHEETS	SHEET NO.
VAR.	D5 ITS 2023-1	VARIOUS	28	6
CONTRACT NO. 70F54			ILLINOIS FED. AID PROJECT	

MODEL: \\MODEL\MAME  
 FILE: \\MAILS\_P\pub\sc-wa-behdfy.com\PIV\DOT\Documents\DOT\_Offices\Dir\dir: S\Project\057054\CADD\data\Drawn\057054-ahc\Intechange\Surveillance\cameras-1.dgn



**PTZ CAMERA INSTALLATION & FIBER OPTIC CONNECTION**

**I-55 & U.S. 24**

(NOT TO SCALE)

**CAMERA & CONDUIT /CABLE LAYOUT**

**CHENOA**



**BILL OF MATERIALS**

I-55 & U.S. 136  
MCLEAN

ITEM	UNIT	QUANTITY
UNDERGROUND CONDUIT, PVC, 2" DIA.	FOOT	1437.0
HANDHOLE	EACH	2.0
ELECTRIC CABLE IN CONDUIT, TRACER, NO. 12 1C	FOOT	690.0
CONCRETE FOUNDATION, TYPE E 36-INCH DIAMETER	FOOT	8.0
CAMERA POLE, 45 FT	EACH	1.0
CLOSED CIRCUIT TELEVISION CABINET	EACH	1.0
ETHERNET SWITCH	EACH	1.0
CLOSED CIRCUIT TELEVISION DOME CAMERA, IP BASED	EACH	1.0
FIBER OPTIC CABLE IN CONDUIT, 12 FIBERS, SINGLE MODE	FOOT	796.0
CAT. 6 ETHERNET CABLE	FOOT	45.0
FIBER OPTIC TERMINATION PANEL, 12 FIBER	EACH	1.0
ELECTRIC CABLE IN CONDUIT, SIGNAL NO. 10 3C	FOOT	1507.0

USER NAME = blggsrd	DESIGNED -	REVISED -
	DRAWN -	REVISED -
PLOT SCALE = 100,0000 ' / in.	CHECKED -	REVISED -
PLOT DATE = 3/25/2022	DATE -	REVISED -

**STATE OF ILLINOIS  
DEPARTMENT OF TRANSPORTATION**

**I-55 & US 24  
CHENOA**

SCALE: 1" = 50' SHEET 1 OF 1 SHEETS STA. TO STA.

F.A. RTE.	SECTION	COUNTY	TOTAL SHEETS	SHEET NO.
VAR.	D5 ITS 2023-1	MCLEAN	28	7
			CONTRACT NO. 70F54	
ILLINOIS FED. AID PROJECT				



# PTZ CAMERA INSTALLATION & FIBER OPTIC CONNECTION

I-55  
&  
CH 8

(NOT TO SCALE)

## CAMERA & CONDUIT /CABLE LAYOUT

LEXINGTON



CONC. FND, TY. E 36" = 8 FT.  
CAMERA POLE 45 FT. = 1 EA.  
CLOSED CIRCUIT TELEVISION DOME CAMERA, IP BASED = 1 EA.  
CLOSED CIRCUIT TELEVISION CABINET = 1 EA.  
FIBER OPTIC TERMINATION PANEL (12 FIBERS) = 1 EA.  
ETHERNET SWITCH = 1 EA. (MANAGED, 2 SM SFP)



EXIST. SERV. INST.  
45' PVC 2"  
1 NO. 10 3C, SIGNAL  
EXIST. ICN HANDHOLE

620' PVC - 2"  
1 FO 12F SM; 1 NO. 12 1C, TRACER;  
1 NO. 10 3C, SIGNAL

10' PVC - 2"  
1 FO 12FSM ; 1 NO. 12 1C, TRACER;  
1 NO. 10 3C, SIGNAL

### BILL OF MATERIALS

I-55 & CH 8 (PJ KELLER HWY)  
LEXINGTON

ITEM	UNIT	QUANTITY
UNDERGROUND CONDUIT, PVC, 2" DIA.	FOOT	675.0
HANDHOLE	EACH	2.0
ELECTRIC CABLE IN CONDUIT, TRACER, NO. 12 1C	FOOT	636.0
CONCRETE FOUNDATION, TYPE E 36-INCH DIAMETER	FOOT	8.0
CAMERA POLE, 45 FT	EACH	1.0
CLOSED CIRCUIT TELEVISION CABINET	EACH	1.0
ETHERNET SWITCH	EACH	1.0
CLOSED CIRCUIT TELEVISION DOME CAMERA, IP BASED	EACH	1.0
FIBER OPTIC CABLE IN CONDUIT, 12 FIBERS, SINGLE MODE	FOOT	745.0
CAT. 6 ETHERNET CABLE	FOOT	45.0
FIBER OPTIC TERMINATION PANEL, 12 FIBER	EACH	1.0
ELECTRIC CABLE IN CONDUIT, SIGNAL NO. 10 3C	FOOT	709.0

STATE OF ILLINOIS  
DEPARTMENT OF TRANSPORTATION

I-55 & CH 8  
LEXINGTON

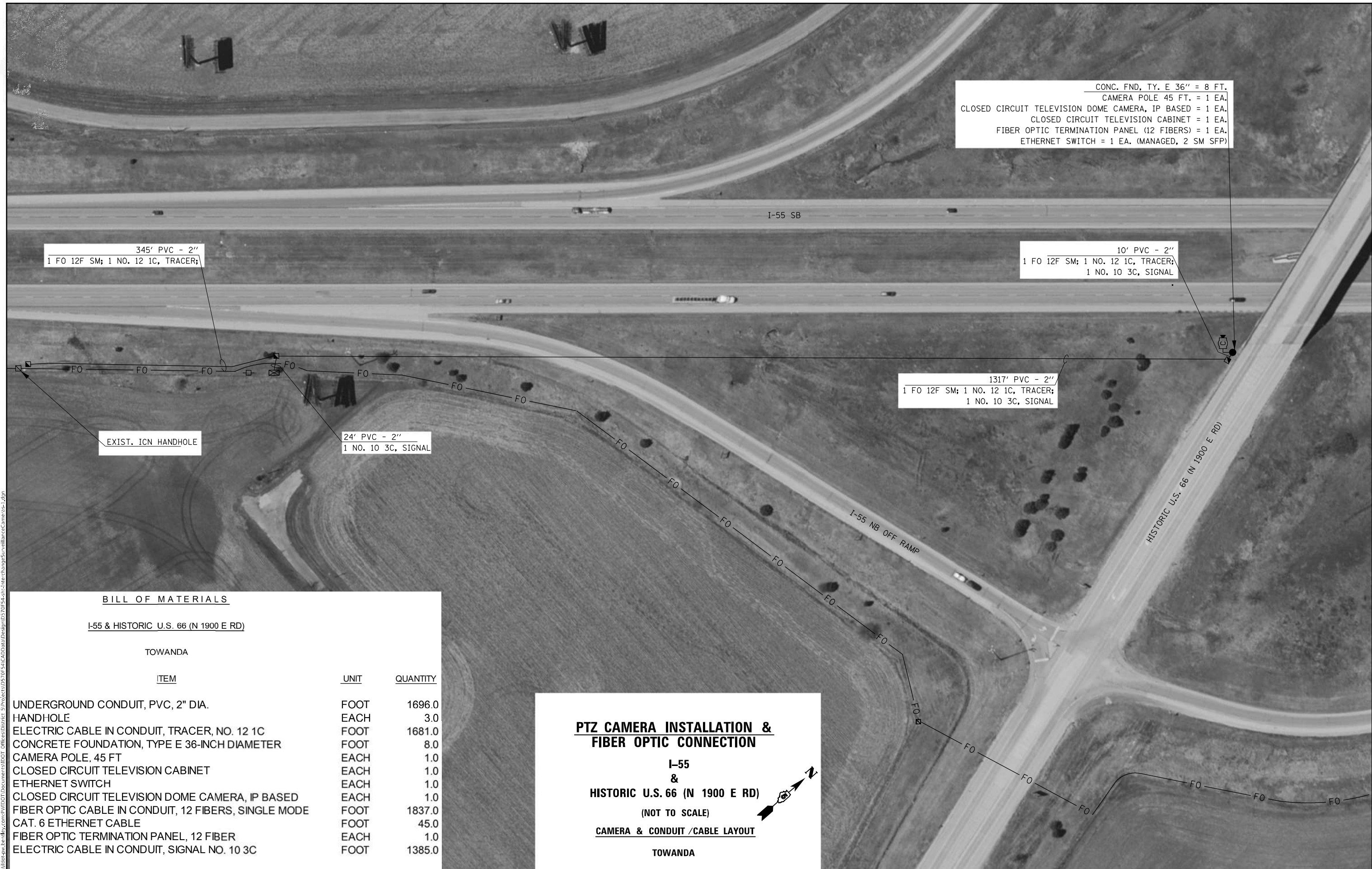
SCALE: 1" = 40' SHEET 1 OF 1 SHEETS STA. TO STA.

F.A. RTE.	SECTION	COUNTY	TOTAL SHEETS	SHEET NO.
	D5 ITS 2023-1	MCLEAN	28	8
CONTRACT NO. 70F54			ILLINOIS FED. AID PROJECT	

MODEL: \\MODEL\MAME  
 FILE: \\MAIL: p:\pub\cpx\beefy.com\PIV\DOT\Documents\DOT Office\Dir\dr: S:\Project\0570F54\CADD\Drawn\Drawn\0570F54.dwg: S:\Project\0570F54\c:\tech\charge\Survelliance\Camerac-1.dwg



MODEL: \\MODEL\MAME  
 FILE: \\MAILS\_P\Public\paw\_becdel\com\PIV\DOT\Documents\DOT\_Offices\Dir\dir: S:\Project\057054\ICDD\DATA\Drawings\057054-rtc\Intechange\Survelliance\Camerac-1.dgn



**BILL OF MATERIALS**

**I-55 & HISTORIC U.S. 66 (N 1900 E RD)**

**TOWANDA**

**ITEM**

**UNIT**

**QUANTITY**

UNDERGROUND CONDUIT, PVC, 2" DIA.	FOOT	1696.0
HANDHOLE	EACH	3.0
ELECTRIC CABLE IN CONDUIT, TRACER, NO. 12 1C	FOOT	1681.0
CONCRETE FOUNDATION, TYPE E 36-INCH DIAMETER	FOOT	8.0
CAMERA POLE, 45 FT	EACH	1.0
CLOSED CIRCUIT TELEVISION CABINET	EACH	1.0
ETHERNET SWITCH	EACH	1.0
CLOSED CIRCUIT TELEVISION DOME CAMERA, IP BASED	EACH	1.0
FIBER OPTIC CABLE IN CONDUIT, 12 FIBERS, SINGLE MODE	FOOT	1837.0
CAT. 6 ETHERNET CABLE	FOOT	45.0
FIBER OPTIC TERMINATION PANEL, 12 FIBER	EACH	1.0
ELECTRIC CABLE IN CONDUIT, SIGNAL NO. 10 3C	FOOT	1385.0

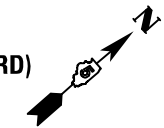
**PTZ CAMERA INSTALLATION & FIBER OPTIC CONNECTION**

**I-55 & HISTORIC U.S. 66 (N 1900 E RD)**

(NOT TO SCALE)

**CAMERA & CONDUIT /CABLE LAYOUT**

**TOWANDA**



USER NAME = blggsrd	DESIGNED -	REVISED -
PLOT SCALE = 120,0000' / in.	DRAWN -	REVISED -
PLOT DATE = 3/23/2022	CHECKED -	REVISED -
	DATE -	REVISED -

**STATE OF ILLINOIS  
DEPARTMENT OF TRANSPORTATION**

**I-55 & HISTORIC U.S. 66 (N 1900 E RD)  
TOWANDA**

SCALE: 1" = 60' SHEET 1 OF 1 SHEETS STA. TO STA.

F.A. RTE.	SECTION	COUNTY	TOTAL SHEETS	SHEET NO.
VAR.	D5 ITS 2023-1	MCLEAN	28	9
			CONTRACT NO. 70F54	
ILLINOIS FED. AID PROJECT				

**PTZ CAMERA INSTALLATION &  
FIBER OPTIC CONNECTION**

**I-74  
&  
CH 36**

(NOT TO SCALE)

**CAMERA & CONDUIT /CABLE LAYOUT**

**DOWNS**



**BILL OF MATERIALS**

I-74 & CH 36			
DOWNS			
ITEM	UNIT	QUANTITY	
UNDERGROUND CONDUIT, PVC, 2" DIA.	FOOT	1635.0	
HANDHOLE	EACH	3.0	
ELECTRIC CABLE IN CONDUIT, TRACER, NO. 12 1C	FOOT	709.0	
CONCRETE FOUNDATION, TYPE E 36-INCH DIAMETER	FOOT	8.0	
CAMERA POLE, 45 FT	EACH	1.0	
CLOSED CIRCUIT TELEVISION CABINET	EACH	1.0	
ETHERNET SWITCH	EACH	1.0	
CLOSED CIRCUIT TELEVISION DOME CAMERA, IP BASED	EACH	1.0	
FIBER OPTIC CABLE IN CONDUIT, 12 FIBERS, SINGLE MODE	FOOT	818.0	
CAT. 6 ETHERNET CABLE	FOOT	45.0	
FIBER OPTIC TERMINATION PANEL, 12 FIBER, FO TERM PANEL 12 EACH	FOOT	1.0	
ELECTRIC CABLE IN CONDUIT, SIGNAL NO. 10 3C	FOOT	976.0	

MODEL: S:\MODEL\VAHES  
 FILE NAME: c:\p\illinois\projects\DOT Documents\DOT - Office\Drawings\Projects\2023\2023-1\2023-1.dwg

USER NAME = biggsrd	DESIGNED -	REVISED -
PLOT SCALE = 1/8" = 1' / in.	DRAWN -	REVISED -
PLOT DATE = 3/25/2022	CHECKED -	REVISED -
	DATE -	REVISED -

**STATE OF ILLINOIS  
DEPARTMENT OF TRANSPORTATION**

**I-74 & CH 36  
DOWNS**

SCALE: 1" = 70' SHEET 1 OF 1 SHEETS STA. TO STA.

F.A. RTE.	SECTION	COUNTY	TOTAL SHEETS	SHEET NO.
VAR.	D5 ITS 2023-1	MCLFAN	28	10
			CONTRACT NO. 70F54	
ILLINOIS FED. AID PROJECT				



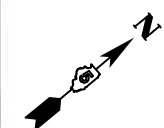
BILL OF MATERIALS

I-74 & HWY 942 (CHESTNUT ST.)

LEROY

ITEM	UNIT	QUANTITY
UNDERGROUND CONDUIT, PVC, 2" DIA.	FOOT	686.0
HANDHOLE	EACH	2.0
ELECTRIC CABLE IN CONDUIT, TRACER, NO. 12 1C	FOOT	678.0
CONCRETE FOUNDATION, TYPE E 36-INCH DIAMETER	FOOT	8.0
CAMERA POLE, 45 FT	EACH	1.0
CLOSED CIRCUIT TELEVISION CABINET	EACH	1.0
ETHERNET SWITCH	EACH	1.0
CLOSED CIRCUIT TELEVISION DOME CAMERA, IP BASED	EACH	1.0
FIBER OPTIC CABLE IN CONDUIT, 12 FIBERS, SINGLE MODE	FOOT	788.0
CAT. 6 ETHERNET CABLE	FOOT	45.0
FIBER OPTIC TERMINATION PANEL, 12 FIBER	EACH	1.0
ELECTRIC CABLE IN CONDUIT, SIGNAL NO. 10 3C	FOOT	733.0

**PTZ CAMERA INSTALLATION & FIBER OPTIC CONNECTION**



**I-74 & HIGHWAY 942 (CHESTNUT ST.)**  
(NOT TO SCALE)

**CAMERA & CONDUIT /CABLE LAYOUT**

**LEROY**

CONC. FND, TY. E 36" = 8 FT.  
CAMERA POLE 45 FT. = 1 EA.  
CLOSED CIRCUIT TELEVISION DOME CAMERA, IP BASED = 1 EA.  
CLOSED CIRCUIT TELEVISION CABINET = 1 EA.  
FIBER OPTIC TERMINATION PANEL (12 FIBERS) = 1 EA.  
ETHERNET SWITCH = 1 EA. (MANAGED, 2 SM SFP)



MODEL: I:\MODELS\M1115  
FILE: M1115.dwg  
PROJECT: I:\PROJECTS\2023\2023-1\M1115\DWG\M1115.dwg  
DATE: 3/25/2022

USER NAME = blggsrd	DESIGNED -	REVISED -
PLOT SCALE = 60,0000 */ in.	DRAWN -	REVISED -
PLOT DATE = 3/25/2022	CHECKED -	REVISED -
	DATE -	REVISED -

**STATE OF ILLINOIS  
DEPARTMENT OF TRANSPORTATION**

**I-74 & HIGHWAY 942  
LEROY**

SCALE: 1" = 30' SHEET 1 OF 1 SHEETS STA. TO STA.

F.A. RTE.	SECTION	COUNTY	TOTAL SHEETS	SHEET NO.
VAR.	D5 ITS 2023-1	MCLEAN	28	11
			CONTRACT NO. 70F54	
ILLINOIS FED. AID PROJECT				

**BILL OF MATERIALS**

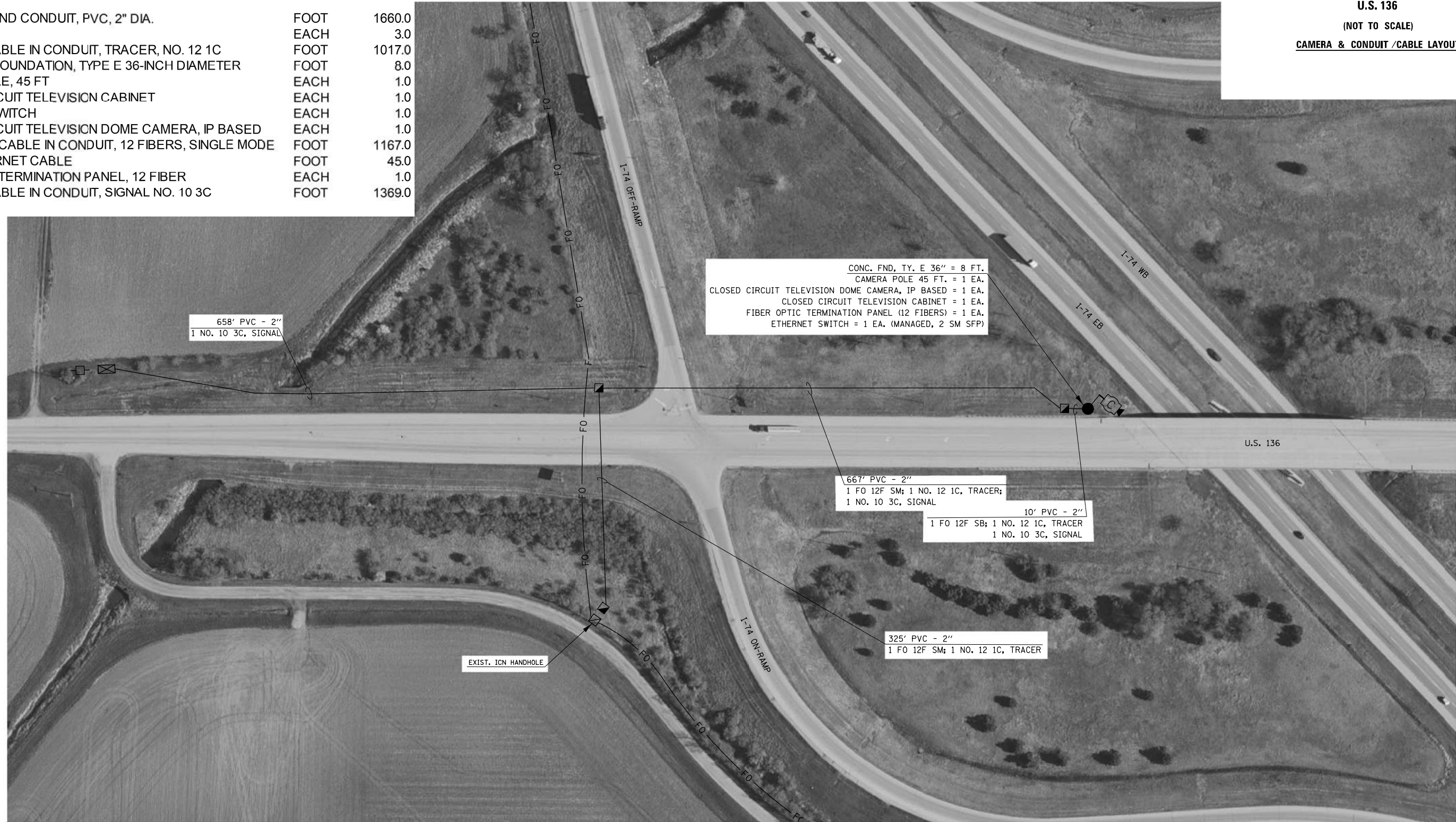
I-74 & U.S. 136

ITEM	UNIT	QUANTITY
UNDERGROUND CONDUIT, PVC, 2" DIA.	FOOT	1660.0
HANDHOLE	EACH	3.0
ELECTRIC CABLE IN CONDUIT, TRACER, NO. 12 1C	FOOT	1017.0
CONCRETE FOUNDATION, TYPE E 36-INCH DIAMETER	FOOT	8.0
CAMERA POLE, 45 FT	EACH	1.0
CLOSED CIRCUIT TELEVISION CABINET	EACH	1.0
ETHERNET SWITCH	EACH	1.0
CLOSED CIRCUIT TELEVISION DOME CAMERA, IP BASED	EACH	1.0
FIBER OPTIC CABLE IN CONDUIT, 12 FIBERS, SINGLE MODE	FOOT	1167.0
CAT. 6 ETHERNET CABLE	FOOT	45.0
FIBER OPTIC TERMINATION PANEL, 12 FIBER	EACH	1.0
ELECTRIC CABLE IN CONDUIT, SIGNAL NO. 10 3C	FOOT	1369.0

**PTZ CAMERA INSTALLATION & FIBER OPTIC CONNECTION**

I-74  
&  
U.S. 136  
(NOT TO SCALE)

**CAMERA & CONDUIT /CABLE LAYOUT**



USER NAME = biggsrd	DESIGNED -	REVISED -
	DRAWN -	REVISED -
PLOT SCALE = 136,8182' / in.	CHECKED -	REVISED -
PLOT DATE = 3/25/2022	DATE -	REVISED -

**STATE OF ILLINOIS  
DEPARTMENT OF TRANSPORTATION**

**I-74 & US 136**

SCALE: 1" = 70' SHEET 1 OF 1 SHEETS STA. TO STA.

F.A. RTE.	SECTION	COUNTY	TOTAL SHEETS	SHEET NO.
VAR.	D5 ITS 2023-1	MCLEAN	28	12
CONTRACT NO. 70F54			ILLINOIS FED. AID PROJECT	



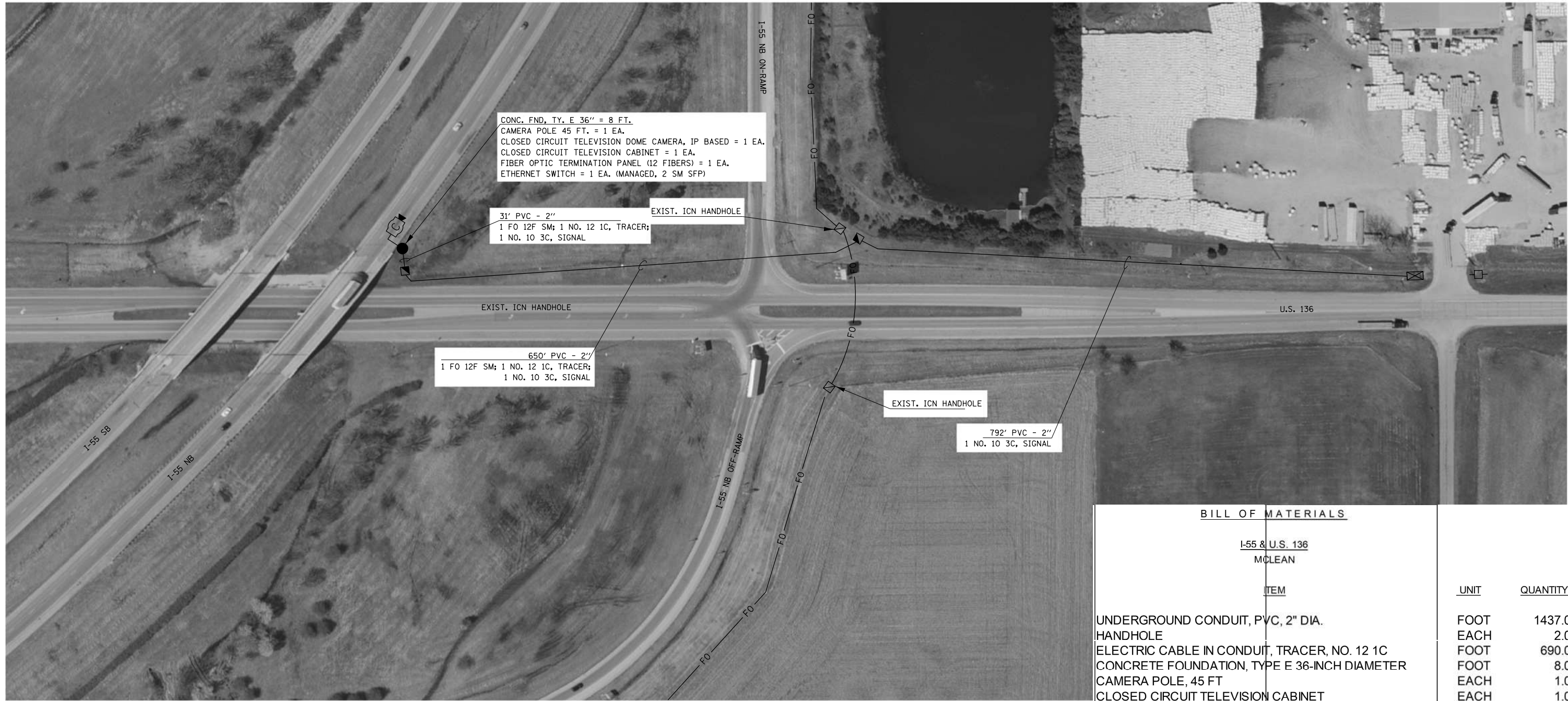
**PTZ CAMERA INSTALLATION & FIBER OPTIC CONNECTION**

I-55  
&  
U.S. 136

(NOT TO SCALE)

CAMERA & CONDUIT /CABLE LAYOUT

MCLEAN



CONC. FND, TY. E 36" = 8 FT.  
CAMERA POLE 45 FT. = 1 EA.  
CLOSED CIRCUIT TELEVISION DOME CAMERA, IP BASED = 1 EA.  
CLOSED CIRCUIT TELEVISION CABINET = 1 EA.  
FIBER OPTIC TERMINATION PANEL (12 FIBERS) = 1 EA.  
ETHERNET SWITCH = 1 EA. (MANAGED, 2 SM SFP)

31' PVC - 2"  
1 FO 12F SM; 1 NO. 12 1C, TRACER;  
1 NO. 10 3C, SIGNAL

650' PVC - 2"  
1 FO 12F SM; 1 NO. 12 1C, TRACER;  
1 NO. 10 3C, SIGNAL

792' PVC - 2"  
1 NO. 10 3C, SIGNAL

BILL OF MATERIALS			
I-55 & U.S. 136 MCLEAN			
ITEM	UNIT	QUANTITY	
UNDERGROUND CONDUIT, PVC, 2" DIA.	FOOT	1437.0	
HANDHOLE	EACH	2.0	
ELECTRIC CABLE IN CONDUIT, TRACER, NO. 12 1C	FOOT	690.0	
CONCRETE FOUNDATION, TYPE E 36-INCH DIAMETER	FOOT	8.0	
CAMERA POLE, 45 FT	EACH	1.0	
CLOSED CIRCUIT TELEVISION CABINET	EACH	1.0	
ETHERNET SWITCH	EACH	1.0	
CLOSED CIRCUIT TELEVISION DOME CAMERA, IP BASED	EACH	1.0	
FIBER OPTIC CABLE IN CONDUIT, 12 FIBERS, SINGLE MODE	FOOT	796.0	
CAT. 6 ETHERNET CABLE	FOOT	45.0	
FIBER OPTIC TERMINATION PANEL, 12 FIBER	EACH	1.0	
ELECTRIC CABLE IN CONDUIT, SIGNAL NO. 10 3C	FOOT	1507.0	

MODEL: I:\MODEL\NAME: FILE: NAME: P:\Public\paw\_bendley.com\PIV\DOT\Documents\DOT\_Offices\Dir\dr: S:\Project\1057054\CADD\data\Drawn\1057054.dwg; S:\Project\1057054\tech\change\SurvellianceCamera-1.dwg

USER NAME = biggsrd	DESIGNED -	REVISED -
PLOT SCALE = 1/40,000' / in.	DRAWN -	REVISED -
PLOT DATE = 3/23/2022	CHECKED -	REVISED -
	DATE -	REVISED -

**STATE OF ILLINOIS  
DEPARTMENT OF TRANSPORTATION**

<b>I-55 &amp; US 136 MCLEAN COUNTY</b>	
SCALE: 1" = 70'	SHEET 1 OF 1 SHEETS
STA.	TO STA.

F.A. RTE.	SECTION	COUNTY	TOTAL SHEETS	SHEET NO.
	D5 ITS 2023-1	MCLEAN	28	13
			CONTRACT NO. 70F54	
ILLINOIS FED. AID PROJECT				

**PTZ CAMERA INSTALLATION &  
FIBER OPTIC CONNECTION**

I-74  
&  
COUNTRY RD. 2050 N (W WASHINGTON ST.)

(NOT TO SCALE)

**CAMERA & CONDUIT / CABLE LAYOUT**

CARLOCK



**BILL OF MATERIALS**

I-74 & COUNTRY RD. 2050 N (W WASHINGTON ST.)  
CARLOCK

ITEM	UNIT	QUANTITY
UNDERGROUND CONDUIT, PVC, 2" DIA.	FOOT	1226.0
HANDHOLE	EACH	3.0
ELECTRIC CABLE IN CONDUIT, TRACER, NO. 12 1C	FOOT	775.0
CONCRETE FOUNDATION, TYPE E 36-INCH DIAMETER	FOOT	8.0
CAMERA POLE, 45 FT	EACH	1.0
CLOSED CIRCUIT TELEVISION CABINET	EACH	1.0
ETHERNET SWITCH	EACH	1.0
CLOSED CIRCUIT TELEVISION DOME CAMERA, IP BASED	EACH	1.0
FIBER OPTIC CABLE IN CONDUIT, 12 FIBERS, SINGLE MODE	FOOT	878.0
CAT. 6 ETHERNET CABLE	FOOT	45.0
FIBER OPTIC TERMINATION PANEL, 12 FIBER	EACH	1.0
ELECTRIC CABLE IN CONDUIT, SIGNAL NO. 12 3C	FOOT	501.0

USER NAME = biggsrd	DESIGNED -	REVISED -
	DRAWN -	REVISED -
PLOT SCALE = 1/40,000' = 1" / in.	CHECKED -	REVISED -
PLOT DATE = 3/25/2022	DATE -	REVISED -

**STATE OF ILLINOIS  
DEPARTMENT OF TRANSPORTATION**

I-57 & COUNTY RD. 2050 N (W WASHINGTON ST.)  
CARLOCK

SCALE: 1" = 60' SHEET 1 OF 1 SHEETS STA. TO STA.

F.A. RTE.	SECTION	COUNTY	TOTAL SHEETS	SHEET NO.
VAR.	D5 ITS 2023-1	VARIOUS	28	14

CONTRACT NO. 70F54

ILLINOIS FED. AID PROJECT

MODEL: SMO26148001.DWG  
FILE NAME: \\projects\2023\03-25-2022\I-57 & County Rd. 2050 N (W Washington St.)\Drawings\SMO26148001.dwg



# PTZ CAMERA INSTALLATION & FIBER OPTIC CONNECTION

I-74  
&  
IL 54

(NOT TO SCALE)

CAMERA & CONDUIT /CABLE LAYOUT

FARMER CITY



CONC. FND, TY, E 36" = 8 FT.  
CAMERA POLE 45 FT. = 1 EA.  
CLOSED CIRCUIT TELEVISION DOME CAMERA, IP BASED = 1 EA.  
CLOSED CIRCUIT TELEVISION CABINET = 1 EA.  
FIBER OPTIC TERMINATION PANEL (12 FIBERS) = 1 EA.  
ETHERNET SWITCH = 1 EA. (MANAGED, 2 SM SFP)

10' PVC - 2"  
1 FO 12F SM, 1 NO. 12 IC, TRACER  
1 NO. 10 3C, SIGNAL

675' PVC - 2"  
1 FO 12F SM, 1 NO. 12 IC, TRACER

## BILL OF MATERIALS

I-74 & IL 54  
FARMER CITY

ITEM	UNIT	QUANTITY
UNDERGROUND CONDUIT, PVC, 2" DIA.	FOOT	1632.0
HANDHOLE	EACH	2.0
ELECTRIC CABLE IN CONDUIT, TRACER, NO. 12 1C	FOOT	694.0
CONCRETE FOUNDATION, TYPE E 36-INCH DIAMETER	FOOT	8.0
CAMERA POLE, 45 FT	EACH	1.0
CLOSED CIRCUIT TELEVISION CABINET	EACH	1.0
ETHERNET SWITCH	EACH	1.0
CLOSED CIRCUIT TELEVISION DOME CAMERA, IP BASED	EACH	1.0
FIBER OPTIC CABLE IN CONDUIT, 12 FIBERS, SINGLE MODE	FOOT	800.0
CAT. 6 ETHERNET CABLE	FOOT	45.0
FIBER OPTIC TERMINATION PANEL, 12 FIBER	EACH	1.0
ELECTRIC CABLE IN CONDUIT, SIGNAL NO. 10 3C	FOOT	985.0

MODEL: \\MODEL\MAME  
 FILE NAME: p:\pub\cpx\hca\paw\com\p\INDOT\Documents\DOT Office\Dir\dr: S:\Project\057054\ICADD\data\Drawn\057054-01-1-ChangeSurveillanceCamera-1.dgn

USER NAME = blggsrd	DESIGNED -	REVISED -
	DRAWN -	REVISED -
PLOT SCALE = 200,0000' / in.	CHECKED -	REVISED -
PLOT DATE = 3/23/2022	DATE -	REVISED -

STATE OF ILLINOIS  
DEPARTMENT OF TRANSPORTATION

I-74 & IL 54  
FARMER CITY

SCALE: 1" = 100' SHEET 1 OF 1 SHEETS STA. TO STA.

F.A. RTE.	SECTION	COUNTY	TOTAL SHEETS	SHEET NO.
VAR.	D5 ITS 2023-1	MCLEAN	28	15
			CONTRACT NO. 70F54	
ILLINOIS FED. AID PROJECT				

# PTZ CAMERA INSTALLATION & FIBER OPTIC CONNECTION

I-74  
&  
CH 2

(NOT TO SCALE)

CAMERA & CONDUIT /CABLE LAYOUT

MANSFIELD



CONC. FND. TY. E 36" = 8 FT.  
CAMERA POLE 45 FT. = 1 EA.  
CLOSED CIRCUIT TELEVISION DOME CAMERA, IP BASED = 1 EA.  
CLOSED CIRCUIT TELEVISION CABINET = 1 EA.  
FIBER OPTIC TERMINATION PANEL (12 FIBERS) = 1 EA.  
ETHERNET SWITCH = 1 EA. (MANAGED, 2 SM SFP)

10' PVC - 2"  
1 FO 12F 5M; 1 NO. 12 1C, TRACER;  
1 NO. 10 3C, SIGNAL

99' PVC - 2"  
1 FO 12F 5M; 1 NO. 12 1C, TRACER;

## BILL OF MATERIALS

I-74 & CH 2  
MANSFIELD

ITEM	UNIT	QUANTITY
UNDERGROUND CONDUIT, PVC, 2" DIA.	FOOT	1568.0
HANDHOLE	EACH	2.0
ELECTRIC CABLE IN CONDUIT, TRACER, NO. 12 1C	FOOT	1010.0
CONCRETE FOUNDATION, TYPE E 36-INCH DIAMETER	FOOT	8.0
CAMERA POLE, 45 FT	EACH	1.0
CLOSED CIRCUIT TELEVISION CABINET	EACH	1.0
ETHERNET SWITCH	EACH	1.0
CLOSED CIRCUIT TELEVISION DOME CAMERA, IP BASED	EACH	1.0
FIBER OPTIC CABLE IN CONDUIT, 12 FIBERS, SINGLE MODE	FOOT	1116.0
CAT. 6 ETHERNET CABLE	FOOT	45.0
FIBER OPTIC TERMINATION PANEL, 12 FIBERS	EACH	1.0
ELECTRIC CABLE IN CONDUIT, SIGNAL NO. 10 3C	FOOT	605.0

MODEL: I:\MODEL\MANSFIELD\I-74 & CH 2\Drawings\I-74 & CH 2\Camera & Conduit\Cable Layout.dwg  
 FILE NAME: I:\MODEL\MANSFIELD\I-74 & CH 2\Drawings\I-74 & CH 2\Camera & Conduit\Cable Layout.dwg  
 PROJECT: I-74 & CH 2\Drawings\I-74 & CH 2\Camera & Conduit\Cable Layout.dwg

USER NAME = blggsrd	DESIGNED -	REVISED -
PLOT SCALE = 200,0000 ' / in.	DRAWN -	REVISED -
PLOT DATE = 3/25/2022	CHECKED -	REVISED -
	DATE -	REVISED -

STATE OF ILLINOIS  
DEPARTMENT OF TRANSPORTATION

I-74 & CH 2  
MANSFIELD

SCALE: 1" = 100' SHEET 1 OF 1 SHEETS STA. TO STA.

F.A. RTE.	SECTION	COUNTY	TOTAL SHEETS	SHEET NO.
VAR.	D5 ITS 2023-1	MCLEAN	28	16
			CONTRACT NO. 70F54	
ILLINOIS FED. AID PROJECT				

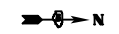


**PTZ CAMERA INSTALLATION & FIBER OPTIC CONNECTION**

**I-74 & PRAIRIEVIEW RD.**

(NOT TO SCALE)

**CAMERA & CONDUIT /CABLE LAYOUT**



60' PVC - 2"  
1 NO. 10 3C, SIGNAL  
DRILL EXIST. HH = 1 EA.

560' PVC - 2"  
1 FO 12F SM; 1 NO. 12 1C, TRACER;  
1 NO. 10 3C, SIGNAL  
DRILL EXIST. HANDHOLE = 1 EA.

10' PVC - 2"  
1 FO 12F SM; 1 NO. 12 1C, TRACER;  
1 NO. 10 3C, SIGNAL

CONC. FND, TY. E 36" = 8 FT.  
CAMERA POLE 45 FT. = 1 EA.  
CLOSED CIRCUIT TELEVISION DOME CAMERA, IP BASED = 1 EA.  
CLOSED CIRCUIT TELEVISION CABINET = 1 EA.  
FIBER OPTIC TERMINATION PANEL (12 FIBERS) = 1 EA.  
ETHERNET SWITCH = 1 EA. (MANAGED, 2 SM SFP)

BILL OF MATERIALS			
I-74 & PRAIRIEVIEW RD. MAHOMET			
ITEM	UNIT	QUANTITY	
UNDERGROUND CONDUIT, PVC, 2" DIA.	FOOT	647.0	
HANDHOLE	EACH	1.0	
ELECTRIC CABLE IN CONDUIT, TRACER, NO. 12 1C	FOOT	579.0	
CONCRETE FOUNDATION, TYPE E 36-INCH DIAMETER	FOOT	8.0	
CAMERA POLE, 45 FT	EACH	1.0	
CLOSED CIRCUIT TELEVISION CABINET	EACH	1.0	
ETHERNET SWITCH	EACH	1.0	
CLOSED CIRCUIT TELEVISION DOME CAMERA, IP BASED	EACH	1.0	
FIBER OPTIC CABLE IN CONDUIT, 12 FIBERS, SINGLE MODE	FOOT	685.0	
CAT. 6 ETHERNET CABLE	FOOT	45.0	
FIBER OPTIC TERMINATION PANEL, 12 FIBERS	EACH	1.0	
ELECTRIC CABLE IN CONDUIT, SIGNAL NO. 10 3C	FOOT	664.0	

MODEL: \\MODEL\MAME  
 FILE: \\MAILS\pub\sc\paw\_bentley.com\FWIDOT\Documents\IDOT\_Offices\Dir\trc\_5\Project\10570554\CADD\Drawn\Drawn\10570554-01-1-Technical\SurveillanceCamera-1.dgn

USER NAME = blggsrd	DESIGNED -	REVISED -
	DRAWN -	REVISED -
PLOT SCALE = 60,0000 * / in.	CHECKED -	REVISED -
PLOT DATE = 3/23/2022	DATE -	REVISED -

**STATE OF ILLINOIS  
DEPARTMENT OF TRANSPORTATION**

**I-74 & PRAIRIEVIEW RD.  
MAHOMET**

SCALE: 1" = 30'    SHEET 1 OF 1 SHEETS    STA.    TO STA.

F.A. RTE.	SECTION	COUNTY	TOTAL SHEETS	SHEET NO.
VAR.	D5 ITS 2023-1	MCLEAN	28	17
			CONTRACT NO. 70F54	
ILLINOIS FED. AID PROJECT				

**PTZ CAMERA INSTALLATION & FIBER OPTIC CONNECTION**

I-57 & MONTICELLO RD.

(NOT TO SCALE)



**CAMERA & CONDUIT/CABLE LAYOUT**



10' PVC - 2"  
1 FO 12F SM; 1 NO. 12 1C, TRACER;  
1 NO. 12 3C, SIGNAL

CONC. FND, TY. E 36" = 8 FT.  
CAMERA POLE 45 FT. = 1 EA.  
CLOSED CIRCUIT TELEVISION DOME CAMERA, IP BASED = 1 EA.  
CLOSED CIRCUIT TELEVISION CABINET = 1 EA.  
FIBER OPTIC DISTRIBUTION ENCLOSURE (12 FIBERS) = 1 EA.  
ETHERNET SWITCH = 1 EA. (MANAGED, 2 SM SFP)

332' PVC - 2"  
1 FO 12F SM; 1 NO. 12 1C, TRACER;  
1 NO. 12 3C, SIGNAL

10' PVC - 2"  
1 NO. 12 3C, SIGNAL

667' PVC - 2"  
1 FO 12F SM; 1 NO. 12 1C, TRACER

**BILL OF MATERIALS**

I-74 & MONTICELLO RD.  
TOLONO

ITEM	UNIT	QUANTITY
UNDERGROUND CONDUIT, PVC, 2" DIA.	FOOT	1022.0
HANDHOLE	EACH	3.0
ELECTRIC CABLE IN CONDUIT, TRACER, NO. 12 1C	FOOT	1031.0
CONCRETE FOUNDATION, TYPE E 36-INCH DIAMETER	FOOT	8.0
CAMERA POLE, 45 FT	EACH	1.0
CLOSED CIRCUIT TELEVISION CABINET	EACH	1.0
ETHERNET SWITCH	EACH	1.0
CLOSED CIRCUIT TELEVISION DOME CAMERA, IP BASED	EACH	1.0
FIBER OPTIC CABLE IN CONDUIT, 12 FIBERS, SINGLE MODE	FOOT	1174.0
CAT. 6 ETHERNET CABLE	FOOT	45.0
FIBER OPTIC TERMINATION PANEL, 12 FIBER, FO TERM PANEL 12F	EACH	1.0
ELECTRIC CABLE IN CONDUIT, SIGNAL NO. 10 3C	FOOT	386.0

MODEL: \\MODEL\MAME  
FILE NAME: \\pub\cva\beadefy.com\PI\DOT\Documents\DOT Office\Dir\Dir: S:\Project\1057054\ICADD\Draw\Draw\1057054.dwg; S:\Project\1057054\ICADD\Draw\Draw\1057054.dwg; S:\Project\1057054\ICADD\Draw\Draw\1057054.dwg; S:\Project\1057054\ICADD\Draw\Draw\1057054.dwg

USER NAME = blggsrd	DESIGNED -	REVISED -
	DRAWN -	REVISED -
PLOT SCALE = 1/40,000' / in.	CHECKED -	REVISED -
PLOT DATE = 3/25/2022	DATE -	REVISED -

**STATE OF ILLINOIS  
DEPARTMENT OF TRANSPORTATION**

**I-57 & MONTICELLO RD.**

SCALE: 1" = 70' SHEET 1 OF 1 SHEETS STA. TO STA.

F.A. RTE.	SECTION	COUNTY	TOTAL SHEETS	SHEET NO.
VAR.	D5 ITS 2023-1	MCLEAN	28	18
			CONTRACT NO. 70F54	
ILLINOIS FED. AID PROJECT				



**PTZ CAMERA INSTALLATION & FIBER OPTIC CONNECTION**

I-72  
&  
IL. 47



(NOT TO SCALE)

**CAMERA & CONDUIT/CABLE LAYOUT**



CONC. FND, TY. E 36" = 8 FT.  
CAMERA POLE 45 FT. = 1 EA.  
CLOSED CIRCUIT TELEVISION DOME CAMERA, IP BASED = 1 EA.  
CLOSED CIRCUIT TELEVISION CABINET = 1 EA.  
FIBER OPTIC DISTRIBUTION ENCLOSURE (12 FIBERS) = 1 EA.  
ETHERNET SWITCH = 1 EA. (MANAGED, 2 SM SFP)

10' PVC - 2"  
1 FO 12F SM; 1 NO. 12 1C, TRACER;  
1 NO. 12 3C, SIGNAL

560' PVC - 2"  
1 FO 12F SM; 1 NO. 12 1C, TRACER;  
1 NO. 12 3C, SIGNAL

EXIST. ICN HANDHOLE

80' PVC - 2"  
1 NO. 12 3C, SIGNAL

EXIST. LIGHTING CABINET

EXIST. SERVICE

**BILL OF MATERIALS**

I-72 & IL. 47

ITEM	UNIT	QUANTITY
UNDERGROUND CONDUIT, PVC, 2" DIA.	FOOT	671.0
HANDHOLE	EACH	2.0
ELECTRIC CABLE IN CONDUIT, TRACER, NO. 12 1C	FOOT	579.0
CONCRETE FOUNDATION, TYPE E 36-INCH DIAMETER	FOOT	8.0
CAMERA POLE, 45 FT	EACH	1.0
CLOSED CIRCUIT TELEVISION CABINET	EACH	1.0
ETHERNET SWITCH	EACH	1.0
CLOSED CIRCUIT TELEVISION DOME CAMERA, IP BASED	EACH	1.0
FIBER OPTIC CABLE IN CONDUIT, 12 FIBERS, SINGLE MODE	FOOT	685.0
CAT. 6 ETHERNET CABLE3	FOOT	45.0
FIBER OPTIC TERMINATION PANEL, 12 FIBER	EACH	1.0
ELECTRIC CABLE IN CONDUIT, SIGNAL NO. 10 3C	FOOT	684.0

MODEL: I:\MODEL\NAME: FILE: NAME: PROJECT: D:\PROJECTS\70F54\CADD\DATA\Drawings\I-72\70F54-ITC\ITC\ChangeSurveillanceCamera-2.dgn

USER NAME = blggsrd	DESIGNED -	REVISED -
PLOT SCALE = 100,000' / in.	DRAWN -	REVISED -
PLOT DATE = 3/23/2022	CHECKED -	REVISED -
	DATE -	REVISED -

**STATE OF ILLINOIS  
DEPARTMENT OF TRANSPORTATION**

**I-72 & IL 47**

SCALE: 1" = 50' SHEET 1 OF 1 SHEETS STA. TO STA.

F.A. RTE.	SECTION	COUNTY	TOTAL SHEETS	SHEET NO.
VAR.	D5 ITS 2023-1	MCLEAN	28	19
			CONTRACT NO. 70F54	
ILLINOIS FED. AID PROJECT				

CONC. FND, TY. E 36" = 8 FT.  
 CAMERA POLE 45 FT. = 1 EA.  
 CLOSED CIRCUIT TELEVISION DOME CAMERA, IP BASED = 1 EA.  
 CLOSED CIRCUIT TELEVISION CABINET = 1 EA.  
 FIBER OPTIC DISTRIBUTION ENCLOSURE (12 FIBERS) = 1 EA.  
 ETHERNET SWITCH = 1 EA. (MANAGED, 2 SM SFP)

PROP. IDOT HANDHOLE

IL. 10

525' PVC - 2"  
 1 FO 12F SM; 1 NO. 12 1C, TRACER;  
 1 NO. 12 3C, SIGNAL

10' PVC - 2"  
 1 FO 12F SM; 1 NO. 12 1C, TRACER;  
 1 NO. 12 3C, SIGNAL

57' PVC - 2"  
 1 NO. 12 3C, SIGNAL

EXIST. ICN HANDHOLE

EXIST. SERVICE

I-57 SB  
 I-57 NB

I-57 NB OFF-RAMP

**BILL OF MATERIALS**

I-72 & IL. 10

ITEM	UNIT	QUANTITY
UNDERGROUND CONDUIT, PVC, 2" DIA.	FOOT	592.0
HANDHOLE	EACH	2.0
ELECTRIC CABLE IN CONDUIT, TRACER, NO. 12 1C	FOOT	544.0
CONCRETE FOUNDATION, TYPE E 36-INCH DIAMETER	FOOT	8.0
CAMERA POLE, 45 FT	EACH	1.0
CLOSED CIRCUIT TELEVISION CABINET	EACH	1.0
ETHERNET SWITCH	EACH	1.0
CLOSED CIRCUIT TELEVISION DOME CAMERA, IP BASED	EACH	1.0
FIBER OPTIC CABLE IN CONDUIT, 12 FIBERS, SINGLE MODE	FOOT	662.0
CAT. 6 ETHERNET CABLE	FOOT	45.0
FIBER OPTIC TERMINATION PANEL, 12 FIBER, FO TERM PANEL 12F	EACH	1.0
ELECTRIC CABLE IN CONDUIT, SIGNAL NO. 10 3C	FOOT	626.0

**PTZ CAMERA INSTALLATION & FIBER OPTIC CONNECTION**

I-72  
 &  
 IL. 10

(NOT TO SCALE)

**CAMERA & CONDUIT/CABLE LAYOUT**

MODEL: I:\MODEL\NAME  
 FILE: NAME.dwg  
 PROJECT: I:\PROJECT\057054\CADD\Drawings\057054.dwg  
 USER: bllgsrd  
 DATE: 3/25/2022

USER NAME = bllgsrd	DESIGNED -	REVISED -
PLOT SCALE = 60,0000 */ in.	DRAWN -	REVISED -
PLOT DATE = 3/25/2022	CHECKED -	REVISED -
	DATE -	REVISED -

**STATE OF ILLINOIS  
 DEPARTMENT OF TRANSPORTATION**

**I-72 & IL 10**  
 SCALE: 1" = 30' SHEET 1 OF 1 SHEETS STA. TO STA.

F.A. RTE.	SECTION	COUNTY	TOTAL SHEETS	SHEET NO.
VAR.	D5 ITS 2023-1	MCLEAN	28	20
			CONTRACT NO. 70F54	
ILLINOIS FED. AID PROJECT				



**PTZ CAMERA INSTALLATION & FIBER OPTIC CONNECTION**

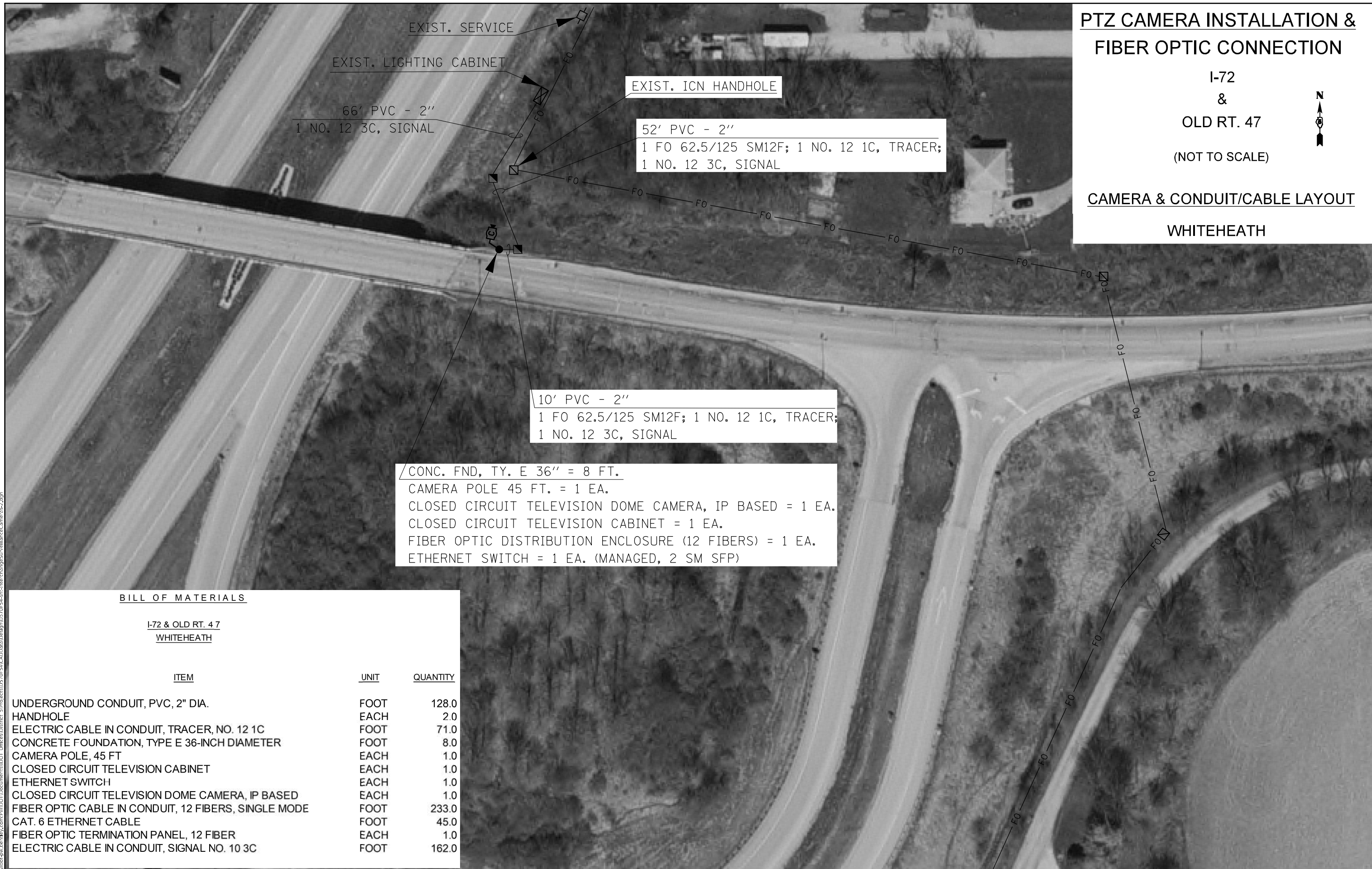
I-72  
&  
OLD RT. 47

(NOT TO SCALE)



**CAMERA & CONDUIT/CABLE LAYOUT**

**WHITEHEATH**



CONC. FND, TY. E 36" = 8 FT.  
CAMERA POLE 45 FT. = 1 EA.  
CLOSED CIRCUIT TELEVISION DOME CAMERA, IP BASED = 1 EA.  
CLOSED CIRCUIT TELEVISION CABINET = 1 EA.  
FIBER OPTIC DISTRIBUTION ENCLOSURE (12 FIBERS) = 1 EA.  
ETHERNET SWITCH = 1 EA. (MANAGED, 2 SM SFP)

**BILL OF MATERIALS**

I-72 & OLD RT. 47  
WHITEHEATH

ITEM	UNIT	QUANTITY
UNDERGROUND CONDUIT, PVC, 2" DIA.	FOOT	128.0
HANDHOLE	EACH	2.0
ELECTRIC CABLE IN CONDUIT, TRACER, NO. 12 1C	FOOT	71.0
CONCRETE FOUNDATION, TYPE E 36-INCH DIAMETER	FOOT	8.0
CAMERA POLE, 45 FT	EACH	1.0
CLOSED CIRCUIT TELEVISION CABINET	EACH	1.0
ETHERNET SWITCH	EACH	1.0
CLOSED CIRCUIT TELEVISION DOME CAMERA, IP BASED	EACH	1.0
FIBER OPTIC CABLE IN CONDUIT, 12 FIBERS, SINGLE MODE	FOOT	233.0
CAT. 6 ETHERNET CABLE	FOOT	45.0
FIBER OPTIC TERMINATION PANEL, 12 FIBER	EACH	1.0
ELECTRIC CABLE IN CONDUIT, SIGNAL NO. 10 3C	FOOT	162.0

MODEL: I:\MODEL\NAME: FILE: NAME: PROJECT: I:\PROJECTS\I-72 & OLD RT. 47\WHITEHEATH\I-72 & OLD RT. 47\WHITEHEATH\CAMERA & CONDUIT\CAMERA & CONDUIT.dwg

USER NAME = blggsrd	DESIGNED -	REVISED -
	DRAWN -	REVISED -
PLOT SCALE = 60,0000 * / in.	CHECKED -	REVISED -
PLOT DATE = 3/23/2022	DATE -	REVISED -

**STATE OF ILLINOIS  
DEPARTMENT OF TRANSPORTATION**

**I-72 & OLD RT 47  
WHITEHEATH**

SCALE: 1" = 30' SHEET 1 OF 1 SHEETS STA. TO STA.

F.A. RTE.	SECTION	COUNTY	TOTAL SHEETS	SHEET NO.
VAR.	D5 ITS 2023-1	MCCLEAN	28	21
			CONTRACT NO. 70F54	
ILLINOIS FED. AID PROJECT				









**PTZ CAMERA INSTALLATION & FIBER OPTIC CONNECTION**

I-72  
&  
IL. 48



(NOT TO SCALE)

**CAMERA & CONDUIT/CABLE LAYOUT**

CISCO

**BILL OF MATERIALS**

I-74 & IL. 48  
CISCO

ITEM	UNIT	QUANTITY
UNDERGROUND CONDUIT, PVC, 2" DIA.	FOOT	878.0
HANDHOLE	EACH	2.0
ELECTRIC CABLE IN CONDUIT, TRACER, NO. 12 1C	FOOT	710.0
CONCRETE FOUNDATION, TYPE E 36-INCH DIAMETER	FOOT	8.0
CAMERA POLE, 45 FT	EACH	1.0
CLOSED CIRCUIT TELEVISION CABINET	EACH	1.0
ETHERNET SWITCH	EACH	1.0
CLOSED CIRCUIT TELEVISION DOME CAMERA, IP BASED	EACH	1.0
FIBER OPTIC CABLE IN CONDUIT, 12 FIBERS, SINGLE MODE	FOOT	816.0
CAT. 6 ETHERNET CABLE	FOOT	45.0
FIBER OPTIC TERMINATION PANEL, 12 FIBER	EACH	1.0
ELECTRIC CABLE IN CONDUIT, SIGNAL NO. 10 3C	FOOT	912.0

CONC. FND, TY. E 36" = 8 FT.  
CAMERA POLE 45 FT. = 1 EA.  
CLOSED CIRCUIT TELEVISION DOME CAMERA, IP BASED = 1 EA.  
CLOSED CIRCUIT TELEVISION CABINET = 1 EA.  
FIBER OPTIC DISTRIBUTION ENCLOSURE (12 FIBERS) = 1 EA.  
ETHERNET SWITCH = 1 EA. (MANAGED, 2 SM SFP)

173' PVC - 2"  
1 FO 62.5/125 SM12F; 1 NO. 12 1C, TRACER;  
1 NO. 12 3C, SIGNAL

528' PVC - 2"  
1 FO 62.5/125 SM12F; 1 NO. 12 1C, TRACER;  
1 NO. 12 3C, SIGNAL

177' PVC - 2"  
1 FO 62.5/125 SM12F; 1 NO. 12 1C, TRACER;  
1 NO. 12 3C, SIGNAL

EXIST. ICN HANDHOLE

EXIST. ICN HANDHOLE

EXIST. LIGHTING CABINET

MODEL: I:\MODELS\MXFE... FILE: I:\MXFE... \I-74 & IL 48 - Camera.dwg

USER NAME = blggsrd	DESIGNED -	REVISED -
	DRAWN -	REVISED -
PLOT SCALE = 100,0000' / in.	CHECKED -	REVISED -
PLOT DATE = 3/23/2022	DATE -	REVISED -

**STATE OF ILLINOIS  
DEPARTMENT OF TRANSPORTATION**

**I-72 & IL 48  
CISCO**

SCALE: 1" = 50' SHEET 1 OF 1 SHEETS STA. TO STA.

F.A. RTE.	SECTION	COUNTY	TOTAL SHEETS	SHEET NO.
VAR.	D5 ITS 2023-1	MCLEAN	28	24
			CONTRACT NO. 70F54	
		ILLINOIS	FED. AID PROJECT	





**BILL OF MATERIALS**

I-39 & U.S. 51 BUS.  
NORMAL

ITEM	UNIT	QUANTITY
UNDERGROUND CONDUIT, PVC, 2" DIA.	FOOT	1145.0
HANDHOLE	EACH	2.0
ELECTRIC CABLE IN CONDUIT, TRACER, NO. 12 1C	FOOT	397.0
CONCRETE FOUNDATION, TYPE E 36-INCH DIAMETER	FOOT	8.0
CAMERA POLE, 45 FT	EACH	1.0
CLOSED CIRCUIT TELEVISION CABINET	EACH	1.0
ETHERNET SWITCH	EACH	1.0
CLOSED CIRCUIT TELEVISION DOME CAMERA, IP BASED	EACH	1.0
FIBER OPTIC CABLE IN CONDUIT, 12 FIBERS, SINGLE MODE	FOOT	503.0
CAT. 6 ETHERNET CABLE	FOOT	45.0
FIBER OPTIC TERMINATION PANEL, 12 FIBER	EACH	1.0
ELECTRIC CABLE IN CONDUIT, SIGNAL NO. 10 3C	FOOT	837.0

**PTZ CAMERA INSTALLATION & FIBER OPTIC CONNECTION**

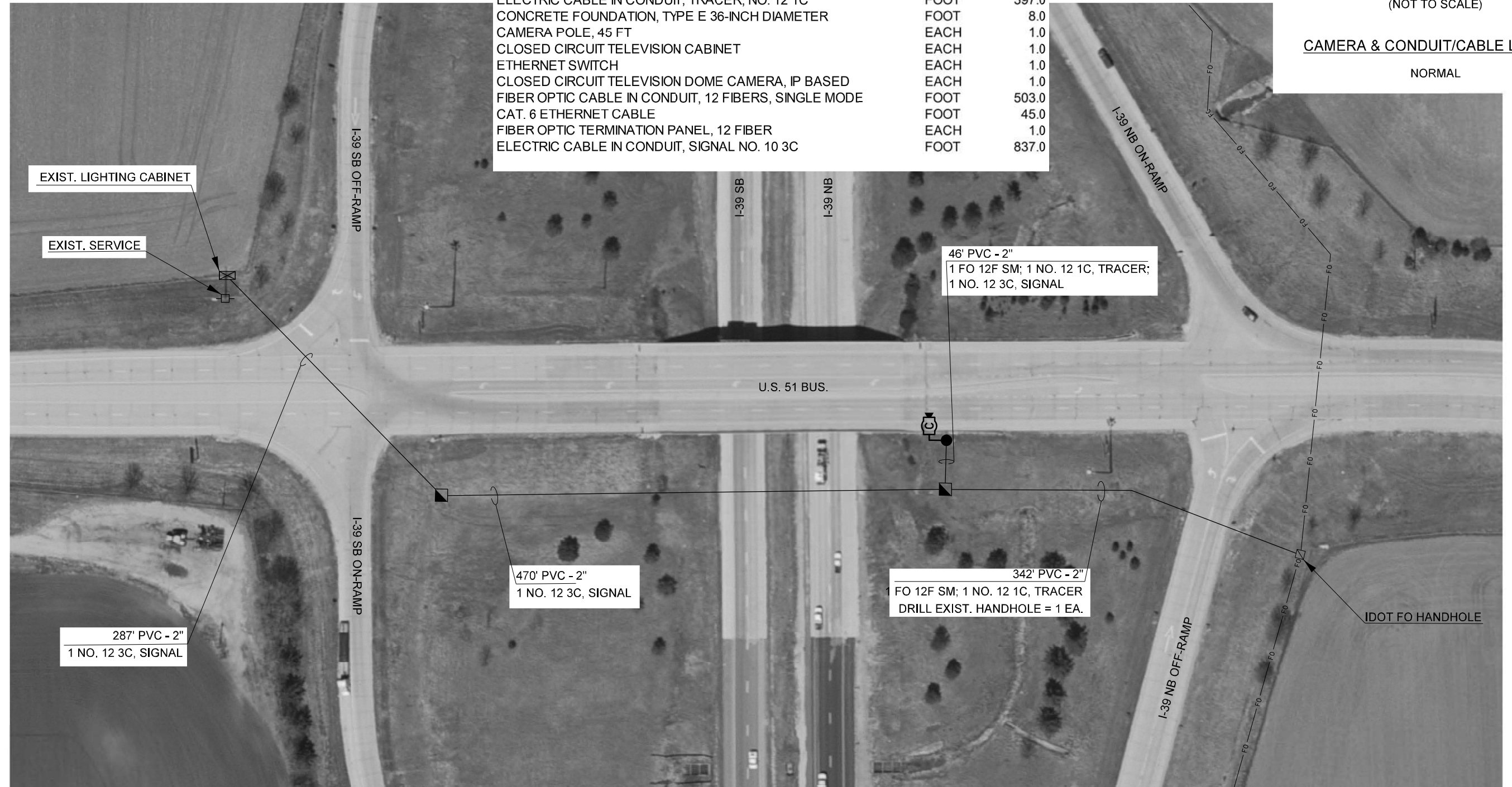
I-39  
&  
U.S. 51 Bus.

(NOT TO SCALE)



**CAMERA & CONDUIT/CABLE LAYOUT**

NORMAL



MODEL: 4100DEL.MXD  
FILE NAME: p:\u003cworkspace\benley.com\PI\DOT\Documents\IDOT Office\District 5\Project\0570F54\CADD\data\Design\0570F54.dwg;int:changeSurvey\benley.com\cameras-2.dgn

USER NAME = biggsrd	DESIGNED -	REVISED -
	DRAWN -	REVISED -
PLOT SCALE = 100,0000' / in.	CHECKED -	REVISED -
PLOT DATE = 3/25/2022	DATE -	REVISED -

**STATE OF ILLINOIS  
DEPARTMENT OF TRANSPORTATION**

**I-39 & US 51 BUS  
NORMAL**

SCALE: 1" = 50'    SHEET 1 OF 1 SHEETS    STA.    TO STA.

F.A. RTE.	SECTION	COUNTY	TOTAL SHEETS	SHEET NO.
VAR.	D5 ITS 2023-1	MCLEAN	28	26
			CONTRACT NO. 70F54	
		ILLINOIS	FED. AID PROJECT	



**BILL OF MATERIALS**

**I-39 & FRANKLIN AVE.  
HUDSON**

ITEM	UNIT	QUANTITY
UNDERGROUND CONDUIT, PVC, 2" DIA.	FOOT	466.0
HANDHOLE	EACH	2.0
ELECTRIC CABLE IN CONDUIT, TRACER, NO. 12 1C	FOOT	443.0
CONCRETE FOUNDATION, TYPE E 36-INCH DIAMETER	FOOT	8.0
CAMERA POLE, 45 FT	EACH	1.0
CLOSED CIRCUIT TELEVISION CABINET	EACH	1.0
ETHERNET SWITCH	EACH	1.0
CLOSED CIRCUIT TELEVISION DOME CAMERA, IP BASED	EACH	1.0
FIBER OPTIC CABLE IN CONDUIT, 12 FIBERS, SINGLE MODE	FOOT	593.0
CAT. 6 ETHERNET CABLE	FOOT	45.0
FIBER OPTIC TERMINATION PANEL, 12 FIBER	EACH	1.0
ELECTRIC CABLE IN CONDUIT, SIGNAL NO. 10 3C	FOOT	469.0

CONC. FND, TY. E 36" = 8 FT.  
 CAMERA POLE 45 FT. = 1 EA.  
 CLOSED CIRCUIT TELEVISION DOME CAMERA, IP BASED = 1 EA.  
 CLOSED CIRCUIT TELEVISION CABINET = 1 EA.  
 FIBER OPTIC DISTRIBUTION ENCLOSURE (12 FIBERS) = 1 EA.  
 ETHERNET SWITCH = 1 EA. (MANAGED, 2 SM SFP)

**PTZ CAMERA INSTALLATION &  
FIBER OPTIC CONNECTION**

**I-39  
&  
FRANKLIN AVE.**

(NOT TO SCALE)



**CAMERA & CONDUIT/CABLE LAYOUT**

**HUDSON**



MODEL: I:\MODEL\MNMF  
 FILE: I:\MODEL\MNMF\I-39 & FRANKLIN AVE.dwg  
 PROJECT: I:\PROJECTS\DOT\Office\I-39 & FRANKLIN AVE.dwg  
 DATE: 3/25/2022

USER NAME = blggsrd	DESIGNED -	REVISED -
	DRAWN -	REVISED -
PLOT SCALE = 60,0000 */ in.	CHECKED -	REVISED -
PLOT DATE = 3/25/2022	DATE -	REVISED -

**STATE OF ILLINOIS  
DEPARTMENT OF TRANSPORTATION**

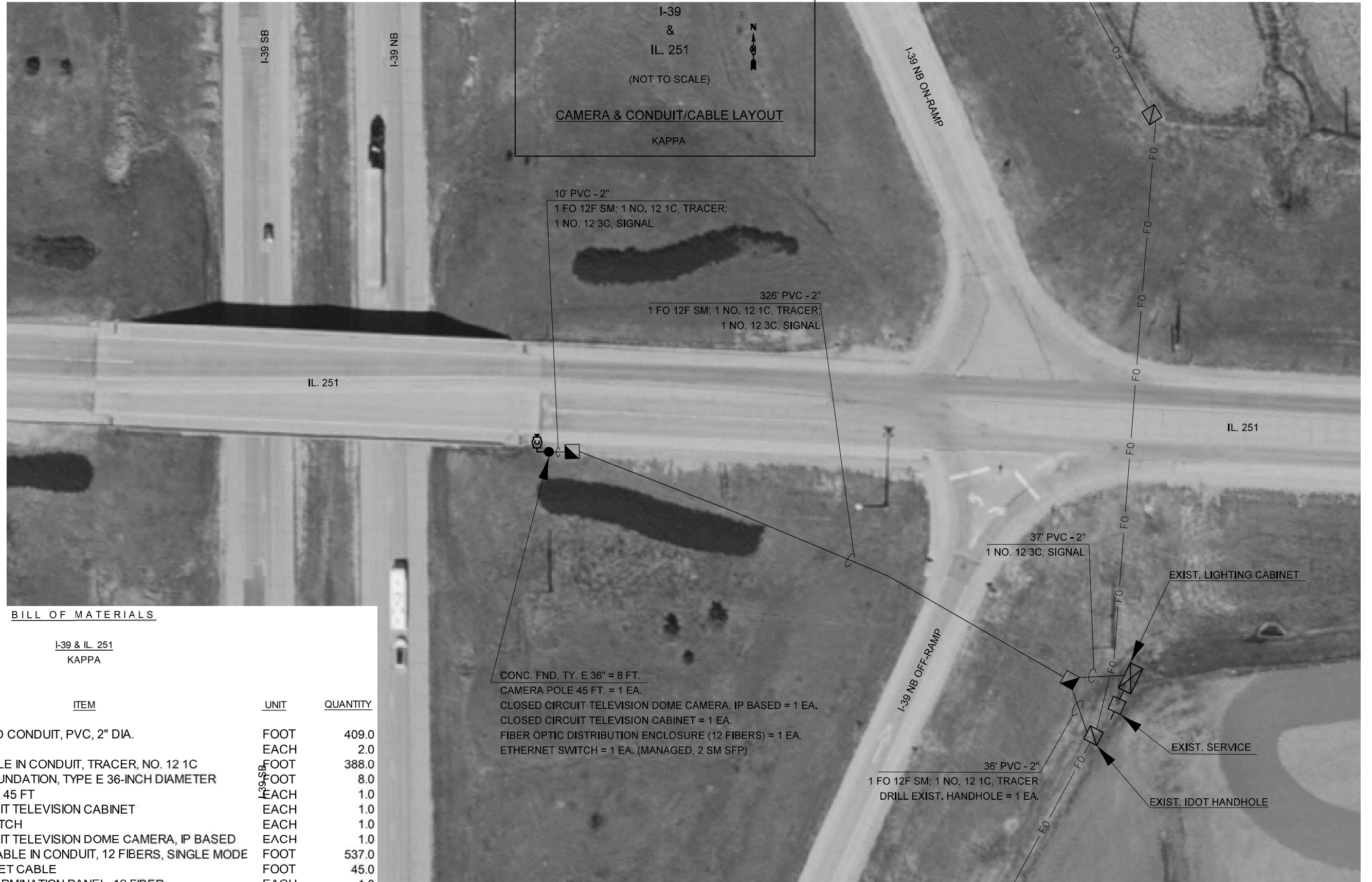
**I 39 & FRANKLIN AVE.**

SCALE: 1" = 30' SHEET 1 OF 1 SHEETS STA. TO STA.

F.A. RTE.	SECTION	COUNTY	TOTAL SHEETS	SHEET NO.
VAR.	D5 ITS 2023-1	MCLEAN	28	27
CONTRACT NO. 70F54			ILLINOIS FED. AID PROJECT	

**PTZ CAMERA INSTALLATION & FIBER OPTIC CONNECTION**

I-39  
&  
IL. 251  
(NOT TO SCALE)  
**CAMERA & CONDUIT/CABLE LAYOUT**  
KAPPA



**BILL OF MATERIALS**

**I-39 & IL. 251**  
KAPPA

ITEM	UNIT	QUANTITY
UNDERGROUND CONDUIT, PVC, 2" DIA.	FOOT	409.0
HANDHOLE	EACH	2.0
ELECTRIC CABLE IN CONDUIT, TRACER, NO. 12 1C	FOOT	388.0
CONCRETE FOUNDATION, TYPE E 36-INCH DIAMETER	FOOT	8.0
CAMERA POLE, 45 FT	EACH	1.0
CLOSED CIRCUIT TELEVISION CABINET	EACH	1.0
ETHERNET SWITCH	EACH	1.0
CLOSED CIRCUIT TELEVISION DOME CAMERA, IP BASED	EACH	1.0
FIBER OPTIC CABLE IN CONDUIT, 12 FIBERS, SINGLE MODE	FOOT	537.0
CAT. 6 ETHERNET CABLE	FOOT	45.0
FIBER OPTIC TERMINATION PANEL, 12 FIBER	EACH	1.0
ELECTRIC CABLE IN CONDUIT, SIGNAL NO. 10 3C	FOOT	407.0

CONC. FND. TY. E 36" = 8 FT.  
CAMERA POLE 45 FT. = 1 EA.  
CLOSED CIRCUIT TELEVISION DOME CAMERA, IP BASED = 1 EA.  
CLOSED CIRCUIT TELEVISION CABINET = 1 EA.  
FIBER OPTIC DISTRIBUTION ENCLOSURE (12 FIBERS) = 1 EA.  
ETHERNET SWITCH = 1 EA. (MANAGED, 2 SM SFP)

**STATE OF ILLINOIS**  
**DEPARTMENT OF TRANSPORTATION**

**I 39 & IL 250**

SCALE: 1" = 30' SHEET 1 OF 1 SHEETS STA. TO STA.

F.A. RTE.	SECTION	COUNTY	TOTAL SHEETS	SHEET NO.
VAR.	D5 ITS 2023-1	MCLEAN	28	28
CONTRACT NO. 70F54			ILLINOIS FED. AID PROJECT	

MODEL: \\MODEL\MAME  
 FILE: \\MAME\_Plan\Public\paw\_beaufy.com\PIV\DOT\Documents\DOT\_Offices\Dir\Dir: S\Project\I39&IL251\CADD\Drawn\Drawn\I39&IL251-Inte\ChangeSurvey\Inte\Camera-2.dgn