

STATE OF ILLINOIS  
DEPARTMENT OF TRANSPORTATION

| F.A.I. RTE. | SECTION            | COUNTY   | TOTAL SHEETS       | SHEET NO. |
|-------------|--------------------|----------|--------------------|-----------|
| 70          | D7 PATCHING 2022-7 | FAYETTE  | 4                  | 1         |
|             |                    | ILLINOIS | CONTRACT NO. 74B08 |           |

FOR INDEX OF SHEETS, SEE SHEET NO. 2

D-97-022-22

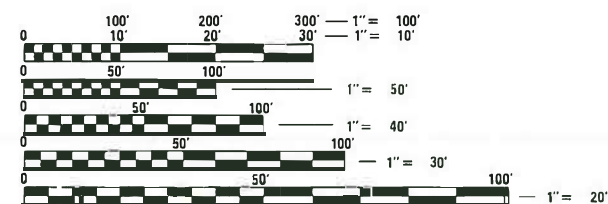
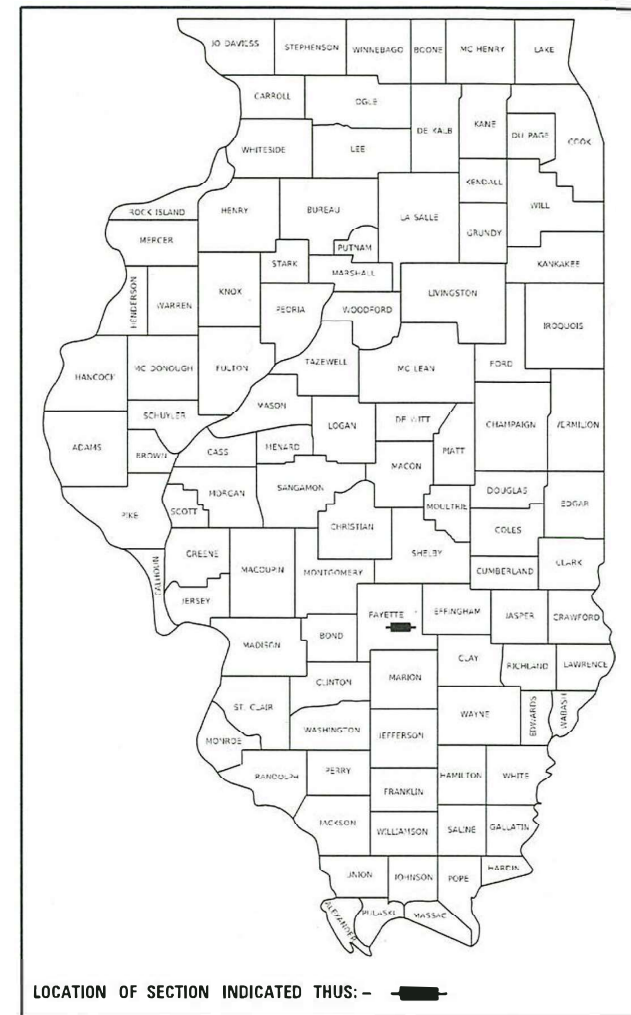
AADT (2018) = 1550

# PROPOSED HIGHWAY PLANS

FAI ROUTE 70 (I-70)  
SECTION D7 PATCHING 2022-7

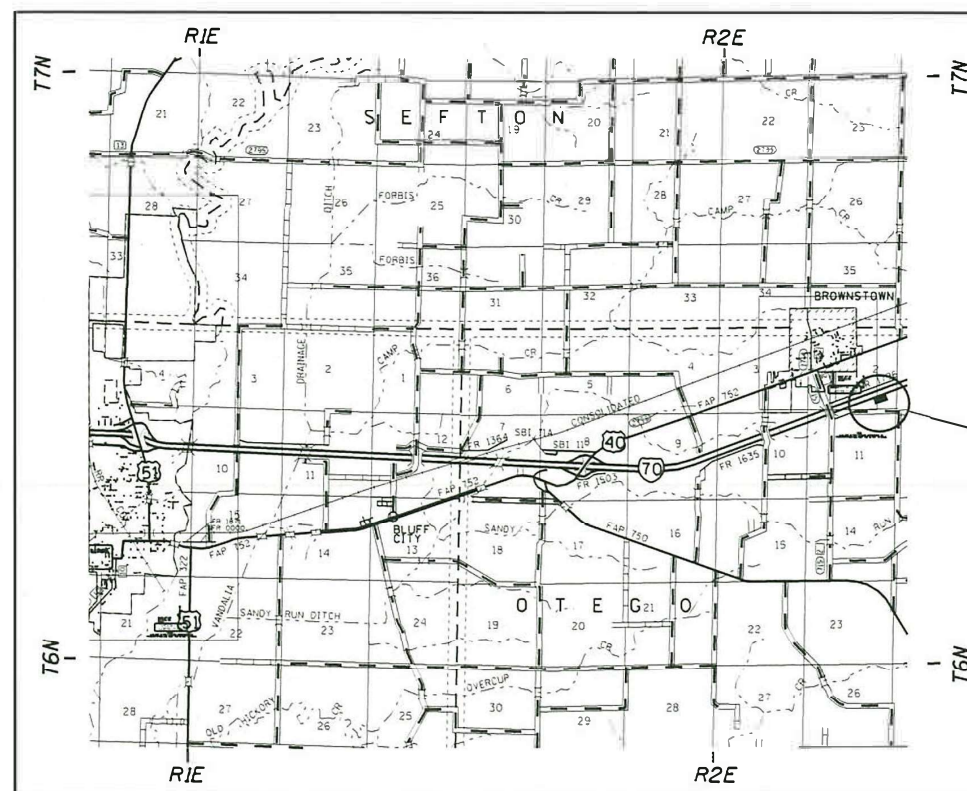
PAVEMENT PATCHING  
FAYETTE COUNTY

C-97-041-22



FULL SIZE PLANS HAVE BEEN PREPARED USING STANDARD ENGINEERING SCALES. REDUCED SIZED PLANS WILL NOT CONFORM TO STANDARD SCALES. IN MAKING MEASUREMENTS ON REDUCED PLANS, THE ABOVE SCALES MAY BE USED.

J.U.L.I.E.  
JOINT UTILITY LOCATION INFORMATION FOR EXCAVATORS  
1-800-892-0123  
OR 811



PROJECT LOCATION

PROJECT ENGINEER: DEBRA BARRETT  
PROJECT MANAGER: JACQUELYN SEALS

GROSS LENGTH = 5596.8 FT. = 1.06 MILE  
NET LENGTH = 5596.8 FT. = 1.06 MILE

CONTRACT NO. 74B08

STATE OF ILLINOIS  
DEPARTMENT OF TRANSPORTATION

SUBMITTED MARCH 23 20 22  
Jeffrey P. Myerles  
REGIONAL ENGINEER

May 13, 2022 [Signature]  
ENGINEER OF DESIGN AND ENVIRONMENT

May 13, 2022 [Signature]  
DIRECTOR OF HIGHWAYS PROJECT IMPLEMENTATION

PRINTED BY THE AUTHORITY  
OF THE STATE OF ILLINOIS

**GENERAL NOTES**

THIS PROJECT IS LOCATED AT THE BROWNSTOWN WEIGH STATION ALONG EASTBOUND 1-70 IN FAYETTE COUNTY. THE WORK INCLUDED IN SECTION D7 PATCHING 2022-7 CONSISTS OF PAVEMENT PATCHING, TRAFFIC CONTROL, AND ANY OTHER WORK NECESSARY TO COMPLETE THIS PROJECT.

THE ACTUAL LOCATIONS OF PAVEMENT PATCHING AND FINAL QUANTITIES SHALL BE DETERMINED BY THE ENGINEER IN THE FIELD.

PATCHING REINFORCEMENT SHALL BE #6 REBAR.

THE RESIDENT ENGINEER SHALL CONTACT THE ILLINOIS STATE POLICE AT THE WEIGH STATION, PHONE NUMBER IS 618-427-3708, TO INFORM THEM OF THE IMPENDING TEMPORARY CLOSURE OF THE WEIGH STATION.

**INDEX OF SHEETS**

| SHEET NO. | ITEM   |
|-----------|--|
| 1         | COVER SHEET  |
| 2         | GENERAL NOTES, INDEX OF SHEETS & LIST OF STANDARDS |
| 3         | SUMMARY OF QUANTITIES                              |
| 4         | PATCHING SCHEDULES                                 |

THE FOLLOWING STANDARDS ARE A PART OF THESE PLANS AND ARE INCLUDED AFTER SHEET NO. 4:

| STANDARD NO. | DESCRIPTION  |
|--------------|--|
| 000001-08    | STANDARD SYMBOLS, ABBREVIATIONS AND PATTERNS                                 |
| 001001-02    | AREAS OF REINFORCEMENT BARS  |
| 001006       | DECIMAL OF AN INCH AND OF A FOOT   |
| 420001-10    | PAVEMENT JOINTS  |
| 442001-04    | CLASS A PATCHES  |
| 442101-09    | CLASS B PATCHES  |
| 701101-05    | OFF-ROAD OPERATIONS, MULTILANE, 15' (4.5M) TO 24' (600MM) FROM PAVEMENT EDGE |
| 701451-05    | RAMP CLOSURE, FREEWAY/EXPRESSWAY   |
| 701901-08    | TRAFFIC CONTROL DEVICES  |

MODEL: Default  
FILE NAME: p:\ultra-cw-beadley.com\PIV\DOT\Documents\DOT Office\Dir\dir\_7\Project\74B08\CADD\DATA\CAD\Sheets\ID74B08-std-gen-note.dgn

|                               |            |           |
|-------------------------------|------------|-----------|
| USER NAME = stefenmk          | DESIGNED - | REVISED - |
|                               | DRAWN -    | REVISED - |
| PLOT SCALE = 100,0000 ' / in. | CHECKED -  | REVISED - |
| PLOT DATE = 3/4/2022          | DATE -     | REVISED - |

**STATE OF ILLINOIS  
DEPARTMENT OF TRANSPORTATION**

**INDEX OF SHEETS & GENERAL NOTES**

SCALE: SHEET 2 OF 4 SHEETS STA. TO STA.

| F.A.J. RTE. | SECTION            | COUNTY  | TOTAL SHEETS              | SHEET NO. |
|-------------|--------------------|---------|---------------------------|-----------|
| 70          | D7 PATCHING 2022-7 | FAYETTE | 4                         | 2         |
|             |                    |         | CONTRACT NO. 74B08        |           |
|             |                    |         | ILLINOIS FED. AID PROJECT |           |

100% STATE

| SUMMARY OF QUANTITIES |  |       | TOTAL QUANTITIES | CONSTRUCTION TYPE CODE |  |  |
|-----------------------|--|-------|------------------|------------------------|--|--|
| CODE NO               | ITEM                                     | UNIT  |                  | 0006                   |  |  |
| 4420050               | WELDED WIRE REINFORCEMENT                | SQ YD | 446.2            | 446.2                  |  |  |
| 4420577               | CLASS A PATCHES, TYPE II, 12 INCH        | SQ YD | 108.7            | 108.7                  |  |  |
| 4420581               | CLASS A PATCHES, TYPE III, 12 INCH       | SQ YD | 17.8             | 17.8                   |  |  |
| 4420583               | CLASS A PATCHES, TYPE IV, 12 INCH        | SQ YD | 1143.8           | 1143.8                 |  |  |
| 44201043              | CLASS B PATCHES, TYPE II, 16 INCH        | SQ YD | 10.7             | 10.7                   |  |  |
| 44201047              | CLASS B PATCHES, TYPE III, 16 INCH       | SQ YD | 21.3             | 21.3                   |  |  |
| 44201048              | CLASS B PATCHES, TYPE IV, 16 INCH        | SQ YD | 424.9            | 424.9                  |  |  |
| 44201299              | DOWEL BARS 1 1/2"                        | EACH  | 108              | 108                    |  |  |
| 44213000              | PATCHING REINFORCEMENT                   | SQ YD | 1270.3           | 1270.3                 |  |  |
| 44213200              | SAW CUTS                                 | FOOT  | 3190.5           | 3190.5                 |  |  |
| 44213204              | TIE BARS 3/4"                            | EACH  | 301              | 301                    |  |  |
| 67100100              | MOBILIZATION                             | L SUM | 1                | 1                      |  |  |
| 70100820              | TRAFFIC CONTROL AND PROTECTION, STANDARD | L SUM | 1                | 1                      |  |  |
|                       | 701451                                   |       |                  |                        |  |  |

REV. - MS

Model: Default  
 File: Main: P:\Project-74808\CAD\CADData\CAD\Sheets\74808-14-S00.dgn

|                              |            |           |
|------------------------------|------------|-----------|
| USER NAME = steffenmk        | DESIGNED - | REVISED - |
|                              | DRAWN -    | REVISED - |
| PLOT SCALE = 100.0000' / in. | CHECKED -  | REVISED - |
| PLOT DATE = 3/4/2022         | DATE -     | REVISED - |

STATE OF ILLINOIS  
 DEPARTMENT OF TRANSPORTATION

SUMMARY OF QUANTITIES

SCALE: SHEET OF SHEETS STA. TO STA.

|             |                    |         |                           |           |
|-------------|--------------------|---------|---------------------------|-----------|
| F.A.I. RTE. | SECTION            | COUNTY  | TOTAL SHEETS              | SHEET NO. |
| 70          | D7 PATCHING 2022-7 | FAYETTE | 4                         | 3         |
|             |                    |         | CONTRACT NO. 74808        |           |
|             |                    |         | ILLINOIS FED. AID PROJECT |           |

| PATCHING SCHEDULE |        |         |        |       | 44200577<br>CLASS A PATCHES,<br>TY II, 12 INCH | 44200581<br>CLASS A PATCHES,<br>TY III, 12 INCH | 44200583<br>CLASS A PATCHES,<br>TY IV, 12 INCH | 44201043<br>CLASS B PATCHES,<br>TYPE II, 16 INCH | 44201047<br>CLASS B PATCHES,<br>TYPE III, 16 INCH | 44201048<br>CLASS B PATCHES,<br>TYPE IV, 16 INCH | 44213204<br>TIE BARS, 3/4" | 44213000<br>PATCHING<br>REINFORCEMENT | 44201299<br>DOWEL BARS<br>1 1/2" | 44200050<br>WELDED WIRE<br>REINFORCEMENT | 44213200<br>SAW CUTS |
|-------------------|--------|---------|--------|-------|--|---|--|--|---|--|----------------------------|---------------------------------------|----------------------------------|--|----------------------|
| PATCH<br>NUMBER   | LANE   | STATION | LENGTH | WIDTH | SQ YD  | SQ YD   | SQ YD  | SQ YD  | SQ YD   | SQ YD  | EACH                       | SQ YD                                 | EACH                             | SQ YD                                    | FOOT                 |
|                   |        |         | FOOT   | FOOT  |  |   |  |  |   |  |                            |                                       |                                  |  |                      |
| 1                 | Scale  | 03+75   | 6.0    | 16.0  | 10.7   |   |  |  |   |  |                            | 10.7                                  |                                  |  | 77.5                 |
| 2                 | Scale  | 03+88   | 6.0    | 16.0  | 10.7   |   |  |  |   |  |                            | 10.7                                  |                                  |  | 77.5                 |
| 3                 | Scale  | 04+23   | 6.0    | 16.0  | 10.7   |   |  |  |   |  |                            | 10.7                                  |                                  |  | 77.5                 |
| 4                 | Scale  | 04+88   | 7.0    | 16.0  | 12.4   |   |  |  |   |  |                            | 12.4                                  |                                  |  | 79.5                 |
| 5                 | Scale  | 06+40   | 6.0    | 16.0  | 10.7   |   |  |  |   |  |                            | 10.7                                  |                                  |  | 77.5                 |
| 6                 | Scale  | 07+09   | 6.0    | 16.0  | 10.7   |   |  |  |   |  |                            | 10.7                                  |                                  |  | 77.5                 |
| 7                 | Scale  | 07+93   | 6.0    | 16.0  | 10.7   |   |  |  |   |  |                            | 10.7                                  |                                  |  | 77.5                 |
| 8                 | Scale  | 09+92   | 6.0    | 16.0  | 10.7   |   |  |  |   |  |                            | 10.7                                  |                                  |  | 77.5                 |
| 9                 | Scale  | 11+06   | 6.0    | 16.0  | 10.7   |   |  |  |   |  |                            | 10.7                                  |                                  |  | 77.5                 |
| 10                | Scale  | 11+80   | 10.0   | 16.0  |  | 17.8  |  |  |   |  |                            | 17.8                                  |                                  |  | 85.5                 |
| 11                | Scale  | 12+50   | 6.0    | 16.0  | 10.7   |   |  |  |   |  |                            | 10.7                                  |                                  |  | 77.5                 |
| 12                | Scale  | 14+66   | 300.0  | 16.0  |  |   |  | 533.3  |   |  | 99                         | 533.3                                 |                                  |  | 665.5                |
| 13                | Scale  | 17+66   | 127.0  | 17.0  |  |   |  | 239.9  |   |  | 41                         | 239.9                                 |                                  |  | 323.5                |
| 14                | Scale  | 20+40   | 115.0  | 14.0  |  |   |  | 178.9  |   |  | 37                         | 178.9                                 |                                  |  | 287.5                |
| 15                | Bypass | 20+40   | 115.0  | 15.0  |  |   |  | 191.7  |   |  | 37                         | 191.7                                 |                                  |  | 291.5                |
| 16                | Bypass | 26+15   | 216.0  | 14.0  |  |   |  |  |   | 336.0  | 71                         |                                       | 24.0                             | 336.0                                    | 475.5                |
| 17                | Bypass | 29+45   | 50.0   | 16.0  |  |   |  |  |   | 88.9   | 16                         |                                       | 28.0                             | 88.9                                     | 149.5                |
| 18                | Scale  | 29+47   | 12.0   | 16.0  |  |   |  |  | 21.3  |  |                            |                                       | 28.0                             | 21.3                                     | 73.5                 |
| 19                | Scale  | 29+83   | 6.0    | 16.0  |  |   |  | 10.7   |   |  |                            |                                       | 28.0                             |  | 61.5                 |
| <b>TOTAL:</b>     |        |         |        |       | 108.7  | 17.8  | 1143.8   | 10.7   | 21.3  | 424.9  | 301.0                      | 1270.3                                | 108.0                            | 446.2                                    | 3190.5               |

STATION 0+00 STARTS AT THE END OF BITUMINOUS/BEGINNING OF CONCRETE

REV. - MS

MODEL: Default  
FILE: M:\msc\paw\benley.com\PROJECTS\DOT\_Offices\District\_7\Project\74808\CADD\DATA\CAD\Sheet\DOT74808-sh-schedule.dgn

|                              |            |           |
|------------------------------|------------|-----------|
| USER NAME = steffennk        | DESIGNED - | REVISED - |
|                              | DRAWN -    | REVISED - |
| PLOT SCALE = 100.0000' / in. | CHECKED -  | REVISED - |
| PLOT DATE = 3/7/2022         | DATE -     | REVISED - |

**STATE OF ILLINOIS  
DEPARTMENT OF TRANSPORTATION**

| SCHEDULE OF QUANTITIES |       |           |              |
|------------------------|-------|-----------|--------------|
| SCALE:                 | SHEET | OF SHEETS | STA. TO STA. |
|                        |       |           |              |

| F.A.I. RTE.               | SECTION            | COUNTY  | TOTAL SHEETS | SHEET NO. |
|---------------------------|--------------------|---------|--------------|-----------|
| 70                        | D7 PATCHING 2022-7 | FAYETTE | 4            | 4         |
| ILLINOIS FED. AID PROJECT |                    |         |              |           |

CONTRACT NO. 74808