

STATE OF ILLINOIS  
DEPARTMENT OF TRANSPORTATION

| F.A.P. RTE. | SECTION    | COUNTY   | TOTAL SHEETS       | SHEET NO. |
|-------------|------------|----------|--------------------|-----------|
| 786         | (110, 111) | LASALLE  | 10                 | 1         |
|             |            | ILLINOIS | CONTRACT NO. 66M16 |           |

**INDEX OF SHEETS**

- 1 COVER SHEET
- 2 GENERAL NOTES
- 3-4 SUMMARY OF QUANTITIES
- 5 TYPICAL SECTIONS
- 6-7 SCHEDULES
- 8-10 DETAILS

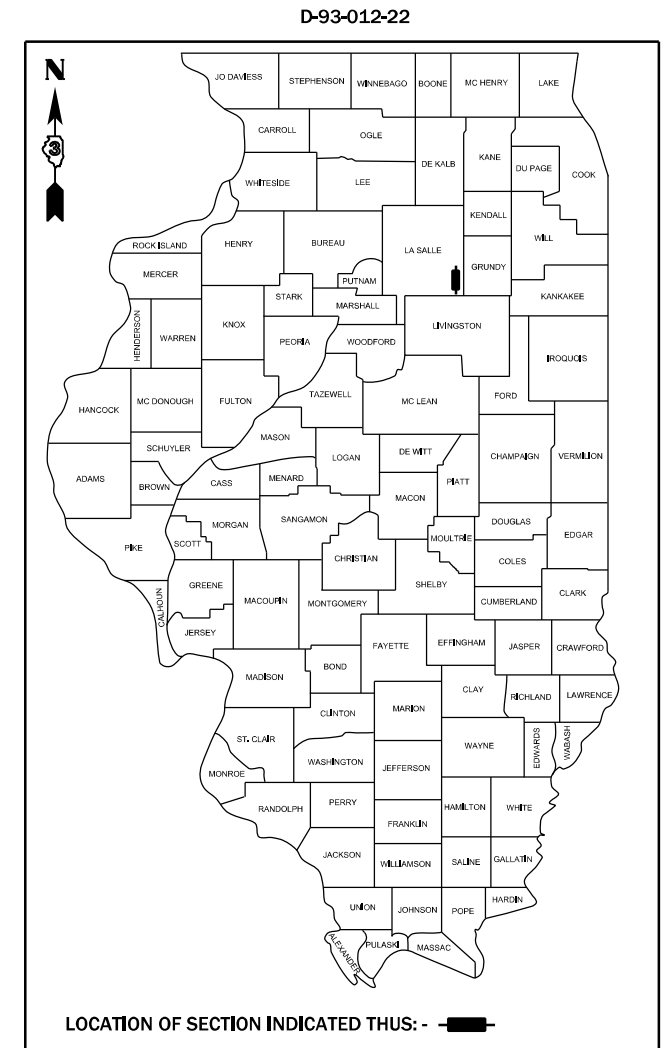
**HIGHWAY STANDARDS**

- 000001-08 STANDARD SYMBOLS, ABBREVIATIONS AND PATTERNS
- 001006 DECIMAL OF AN INCH AND OF A FOOT
- 406201-01 MAILBOX TURNOUT
- 482001-02 HMA SHOULDER ADJACENT TO FLEXIBLE PAVEMENT
- 482006-03 HMA SHOULDER ADJACENT TO RIGID PAVEMENT
- 642006-01 SHOULDER RUMBLE STRIPS, 8 INCH
- 701006-05 OFF-ROAD OPERATIONS 2L, 2W, 15' (4.5 m) TO 24" (600 mm) FROM PAVEMENT EDGE
- 701311-03 LANE CLOSURE, 2L, 2W, MOVING OPERATIONS - DAY ONLY
- 701326-04 LANE CLOSURE, 2L, 2W, PAVEMENT WIDENING, FOR SPEEDS ≥ 45 MPH
- 701901-08 TRAFFIC CONTROL DEVICES

**PROPOSED  
HIGHWAY PLANS**

FAP ROUTE 786 (IL 170)  
SECTION (110, 111) SFY  
PROJECT: HSIP - GYZS (422)  
SHOULDER WIDENING AND RUMBLE STRIPS  
LASALLE COUNTY

C-93-032-22



IL 170 - MINOR ARTERIAL  
2019 ADT = 1250  
P.V. = 74.4% S.U. = 10.4% M.U. = 15.2%

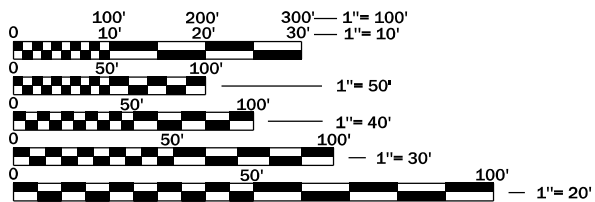
STATE OF ILLINOIS  
DEPARTMENT OF TRANSPORTATION

SUBMITTED March 21, 2022

*[Signature]*  
REGIONAL ENGINEER

May 13, 2022  
*[Signature]*  
ENGINEER OF DESIGN AND ENVIRONMENT

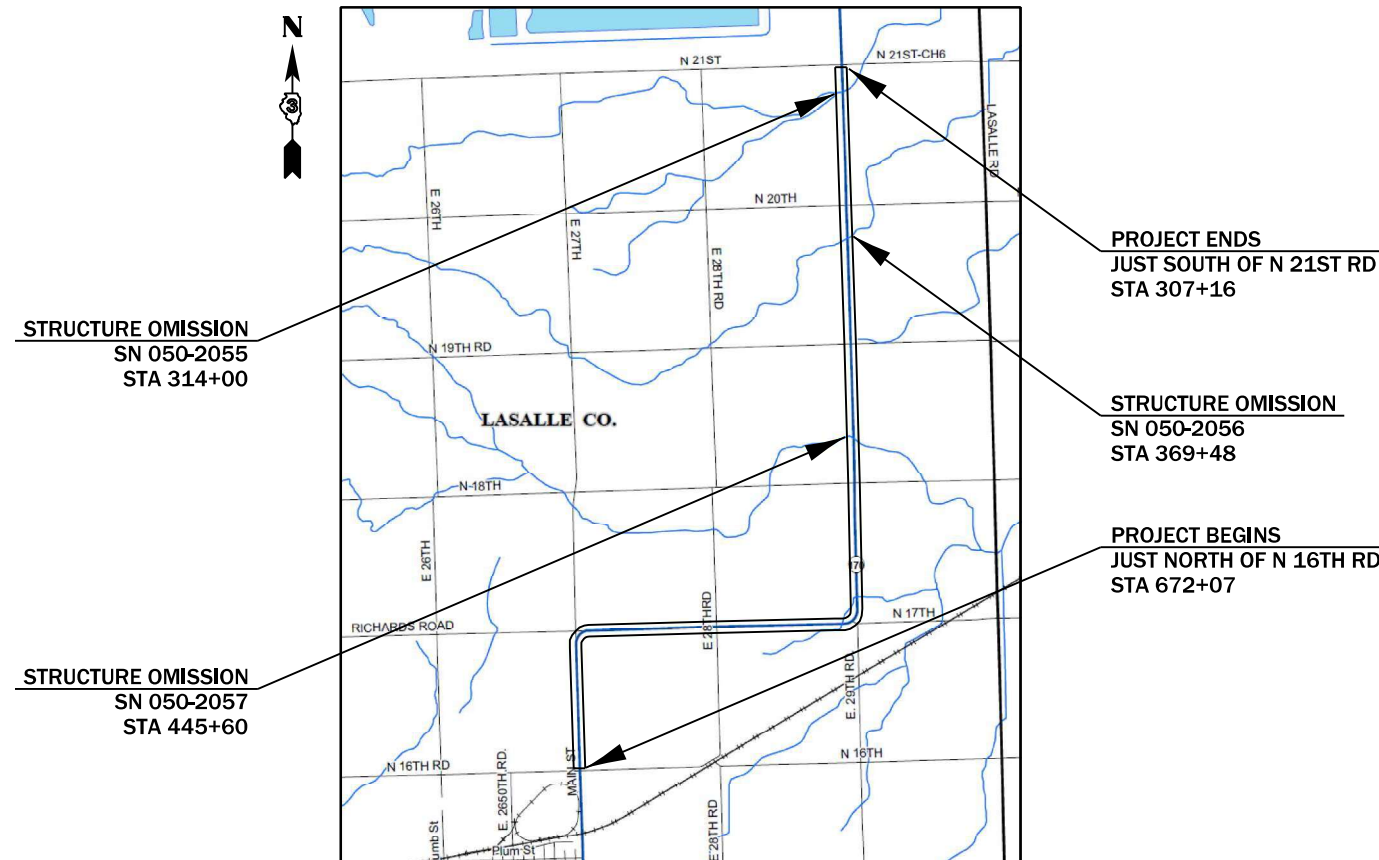
May 13, 2022  
*[Signature]*  
DIRECTOR OF HIGHWAYS PROJECT IMPLEMENTATION



FULL SIZE PLANS HAVE BEEN PREPARED USING STANDARD ENGINEERING SCALES. REDUCED SIZED PLANS WILL NOT CONFORM TO STANDARD SCALES. IN MAKING MEASUREMENTS ON REDUCED PLANS, THE ABOVE SCALES MAY BE USED.

J.U.L.I.E.  
JOINT UTILITY LOCATION INFORMATION FOR EXCAVATION  
1-800-892-0123  
OR 811

PROJECT ENGINEER: JOE KANNEL, P.E.  
UNIT CHIEF: MARC BUDZYNSKI, P.E.  
DISTRICT 3 NO. (815) 434-6131  
CONTRACT NO. 66M16



GROSS LENGTH = 36,491 FT. = 6.91 MILES  
NET LENGTH = 35,641 FT. = 6.75 MILES

PRINTED BY THE AUTHORITY  
OF THE STATE OF ILLINOIS

**GENERAL NOTES**

THE HMA SURFACE OF ALL MAILBOX TURNOUTS, PRIVATE ENTRANCES, COMMERCIAL ENTRANCES, AND SIDE ROADS SHALL BE MADE NEATLY, IN A WORKMANLIKE MANNER, AND SHALL ACCURATELY CONFORM TO THE SHAPES AND DIMENSIONS SHOWN ON THE PLAN DETAILS. IF REQUIRED BY THE ENGINEER, THE CONTRACTOR SHALL SAW CUT THE HMA SURFACE TO CONFORM TO THE SHAPES AND DIMENSIONS SHOWN ON THE PLAN DETAILS. THIS WORK WILL BE INCLUDED IN THE COST OF THE HMA SURFACE.

ABANDONED UNDERGROUND UTILITIES THAT CONFLICT WITH CONSTRUCTION SHALL BE DISPOSED OF OUTSIDE THE LIMITS OF THE RIGHT OF WAY ACCORDING TO ARTICLE 202.03 OF THE STANDARD SPECIFICATIONS AND AS DIRECTED BY THE ENGINEER. THIS WORK WILL NOT BE PAID FOR SEPARATELY, BUT WILL BE INCLUDED IN THE COST OF EARTH EXCAVATION.

THE FOLLOWING RATES OF APPLICATION HAVE BEEN USED IN CALCULATING PLAN QUANTITIES:

|                 |     |                  |
|-----------------|-----|------------------|
| HMA RESURFACING | 112 | LBS / SQ YD / IN |
|-----------------|-----|------------------|

ALL DAMAGE TO DEPARTMENT OWNED UNDERGROUND FACILITIES, CAUSED BY THE CONTRACTOR SHALL BE REPAIRED TO THE SATISFACTION OF THE DEPARTMENT AT THE CONTRACTOR'S EXPENSE. THIS SHALL INCLUDE ALL TEMPORARY REPAIRS REQUIRED TO KEEP THE FACILITY OPERATIONAL WHILE MATERIAL IS BEING OBTAINED TO MAKE PERMANENT REPAIRS. SPLICING OF ELECTRIC CABLE WILL NOT BE ALLOWED. ELECTRIC CABLE SHALL BE REPLACED FROM POLE TO POLE OR CONTROLLER.

THE CONTRACTOR SHALL CONTACT JULIE AT LEAST 48 HOURS PRIOR TO EXCAVATION TO DETERMINE WHICH UTILITIES ARE IN THE AREA.

**COMMITMENTS:**

| HMA MIXTURE REQUIREMENT TABLE                |                         |                         |
|--|-------------------------|-------------------------|
| LOCATION(S) :                                | ENTIRE PROJECT SHOULDER | ENTIRE PROJECT SHOULDER |
| MIXTURE USE(S) :                             | BOTTOM LIFT(S)          | TOP LIFT (2")           |
| BINDER GRADE (PG) :                          | PG 64-22                | PG 64-22                |
| DESIGN AIR VOIDS :                           | 4.0% @ N50              | 4.0% @ N50              |
| MIXTURE COMPOSITION :<br>(MIXTURE GRADATION) | IL-19.0                 | IL-9.5 FG               |
| FRICTION AGGREGATE :                         | -                       | -                       |
| MIXTURE WEIGHT :                             | 112.0 LB/SY/IN          | 112.0 LB/SY/IN          |
| QUALITY MANAGEMENT PROGRAM :                 | QC/QA                   | QC/QA                   |
| SUBLOT SIZE :                                | N/A                     | N/A                     |
| DENSITY TEST METHOD :                        | CORES                   | CORES                   |
| MATERIAL TRANSFER DEVICE (REQUIRED?) :       | NO                      | NO                      |

STATE OF ILLINOIS  
DEPARTMENT OF TRANSPORTATION  
DISTRICT THREE  
AS BUILT INFORMATION

\_\_\_\_\_  
SUPERVISING CONSTRUCTION FIELD ENGINEER

\_\_\_\_\_  
RESIDENT ENGINEER / TECHNICIAN

START & END DATES  
OF CONSTRUCTION:

INSPECTORS:

STATE OF ILLINOIS  
DEPARTMENT OF TRANSPORTATION  
DISTRICT THREE

PREPARED BY: \_\_\_\_\_  
DISTRICT STUDIES & PLANS ENGINEER

DATE: \_\_\_\_\_

EXAMINED BY: \_\_\_\_\_  
DISTRICT CONSTRUCTION ENGINEER

\_\_\_\_\_  
DISTRICT MATERIALS ENGINEER

\_\_\_\_\_  
DISTRICT OPERATIONS ENGINEER

MODEL: \\MODELM\MAILS  
FILE: \\MAILS\c:\p\work\asbld\bu02\miskim\075064\0366M16-sh-covr.dgn

|                              |            |           |
|------------------------------|------------|-----------|
| USER NAME = budzynskim       | DESIGNED - | REVISED - |
|                              | DRAWN -    | REVISED - |
| PLOT SCALE = 100,0000' / in. | CHECKED -  | REVISED - |
| PLOT DATE = 3/21/2022        | DATE -     | REVISED - |

**STATE OF ILLINOIS  
DEPARTMENT OF TRANSPORTATION**

**GENERAL NOTES**

SCALE: SHEET OF SHEETS STA. TO STA.

| F.A.P. RTE.               | SECTION        | COUNTY  | TOTAL SHEETS       | SHEET NO. |
|---------------------------|----------------|---------|--------------------|-----------|
| 786                       | (110, 111) SFY | LASALLE | 10                 | 2         |
| ILLINOIS FED. AID PROJECT |                |         | CONTRACT NO. 66M16 |           |

MODEL: \\MODELM\JM\FILES  
 FILE: \\MODELM\JM\WORKSPACE\budzynskim\075064\0366M16-shr-cover.dgn

| CODE NO.   | ITEM  | UNIT   | TOTAL QUANTITY | CONSTR. CODE         |        |
|------------|---|--------|----------------|----------------------|--------|
|            |   |        |                | 90% FED<br>10% STATE | SAFETY |
|            |   |        |                | 0021                 | RURAL  |
| 40600290   | BITUMINOUS MATERIALS (TACK COAT)                | POUND  | 14100          | 14100                |        |
| 40800050   | INCIDENTAL HOT-MIX ASPHALT SURFACING            | TON    | 1.9            | 1.9                  |        |
| 44000157   | HOT-MIX ASPHALT SURFACE REMOVAL, 2"             | SQ YD  | 16             | 16                   |        |
| 48203029   | HOT-MIX ASPHALT SHOULDERS, 8"                   | SQ YD  | 31301          | 31301                |        |
| 64200108   | SHOULDER RUMBLE STRIPS, 8 INCH                  | FOOT   | 69915          | 69915                |        |
| * 66900200 | NON-SPECIAL WASTE DISPOSAL                      | CU YD  | 40             | 40                   |        |
| * 66900530 | SOIL DISPOSAL ANALYSIS                          | EACH   | 1              | 1                    |        |
| * 66901001 | REGULATED SUBSTANCES PRE-CONSTRUCTION PLAN      | L SUM  | 1              | 1                    |        |
| * 66901003 | REGULATED SUBSTANCES FINAL CONSTRUCTION REPORT  | L SUM  | 1              | 1                    |        |
| * 66901006 | REGULATED SUBSTANCES MONITORING                 | CAL DA | 1              | 1                    |        |
| 67100100   | MOBILIZATION                                    | L SUM  | 1              | 1                    |        |
| 70100500   | TRAFFIC CONTROL AND PROTECTION, STANDARD 701326 | L SUM  | 1              | 1                    |        |
| 70103815   | TRAFFIC CONTROL SURVEILLANCE                    | CAL DA | 10             | 10                   |        |
| * 78001110 | PAINT PAVEMENT MARKING - LINE 4"                | FOOT   | 143412         | 143412               |        |

\*= SPECIALTY ITEM

|                              |            |           |   |                              |       |    |        |             |                |                           |              |           |
|------------------------------|------------|-----------|---|------------------------------|-------|----|--------|-------------|----------------|---------------------------|--------------|-----------|
| USER NAME = budzynskim       | DESIGNED - | REVISED - | <b>STATE OF ILLINOIS<br/>DEPARTMENT OF TRANSPORTATION</b> | <b>SUMMARY OF QUANTITIES</b> |       |    |        | F.A.P. RTE. | SECTION        | COUNTY                    | TOTAL SHEETS | SHEET NO. |
| PLOT SCALE = 100.0000' / in. | DRAWN -    | REVISED - |   |                              |       |    |        | 786         | (110, 111) SFY | LASALLE                   | 10           | 3         |
| PLOT DATE = 3/21/2022        | CHECKED -  | REVISED - |   | SCALE:                       | SHEET | OF | SHEETS | STA.        | TO STA.        | ILLINOIS FED. AID PROJECT |              |           |
| DATE -                       | REVISED -  |           |   |                              |       |    |        |             |                | CONTRACT NO. 66M16        |              |           |

| CODE NO. | ITEM                          | UNIT  | TOTAL QUANTITY | CONSTR. CODE         |       |
|----------|-------------------------------|-------|----------------|----------------------|-------|
|          |                               |       |                | 90% FED<br>10% STATE |       |
|          |                               |       |                | SAFETY               |       |
|          |                               |       |                | 0021                 | RURAL |
| X0800001 | SHOULDER REMOVAL (SPECIAL)    | SQ YD | 31301          | 31301                |       |
| Z0030850 | TEMPORARY INFORMATION SIGNING | SQ FT | 42             | 42                   |       |

MODEL: \\MODELMANETS  
 FILE: \\manets\_csm\work\mido\budzynskim\075064\0366M16-shr-cover.dgn

|                               |            |           |
|-------------------------------|------------|-----------|
| USER NAME = budzynskim        | DESIGNED - | REVISED - |
|                               | DRAWN -    | REVISED - |
| PLOT SCALE = 100.0000 ' / in. | CHECKED -  | REVISED - |
| PLOT DATE = 3/21/2022         | DATE -     | REVISED - |

**STATE OF ILLINOIS  
DEPARTMENT OF TRANSPORTATION**

**SUMMARY OF QUANTITIES**

SCALE: SHEET OF SHEETS STA. TO STA.

| F.A.P. RTE.               | SECTION        | COUNTY  | TOTAL SHEETS | SHEET NO. |
|---------------------------|----------------|---------|--------------|-----------|
| 786                       | (110, 111) SFY | LASALLE | 10           | 4         |
| CONTRACT NO. 66M16        |                |         |              |           |
| ILLINOIS FED. AID PROJECT |                |         |              |           |



| SHOULDER REMOVAL & REPLACEMENT SCHEDULE |           |         |              |                                  |                        |                       |                                  |                                    |  |
|---|-----------|---------|--------------|----------------------------------|------------------------|-----------------------|----------------------------------|------------------------------------|--|
| LOCATION                                |           | SIDE    | LENGTH       | SHOULDER<br>REMOVAL<br>(SPECIAL) | HMA<br>SHOULDERS<br>8" | BIT MTLs<br>TACK COAT | SHOULDER<br>RUMBLE<br>STRIPS, 8" | *PAINT PVMT<br>MARKING<br>WHITE 4" |  |
| STA                                     | TO STA    | LT / RT | FOOT         | SQ YD                            | SQ YD                  | POUND                 | FOOT                             | FOOT                               |  |
| N 21ST RD = STA 304+65                  |           |         |              |                                  |                        |                       |                                  |                                    |  |
| 307+16                                  | TO 312+55 | LT & RT | 539          | 480                              | 480                    | 216                   | 1078                             | 2156                               |  |
| 312+55                                  | TO 312+94 | LT      | 39           | 18                               | 18                     | 8                     | 39                               | 78                                 |  |
| STRUCTURE OMISSION                      |           |         |              |                                  |                        |                       |                                  | 896                                |  |
| SN 050-2055 = STA 314+00                |           |         |              |                                  |                        |                       |                                  |                                    |  |
| 315+18                                  | TO 315+60 | RT      | 42           | 19                               | 19                     | 9                     | 42                               | 84                                 |  |
| 315+60                                  | TO 357+47 | LT & RT | 4187         | 3722                             | 3722                   | 1675                  | 8284                             | 16748                              |  |
| N 20TH RD = STA 357+73                  |           |         |              |                                  |                        |                       |                                  |                                    |  |
| 357+97                                  | TO 368+02 | LT & RT | 1005         | 894                              | 894                    | 402                   | 1960                             | 4020                               |  |
| 368+02                                  | TO 368+30 | LT      | 28           | 13                               | 13                     | 6                     | 28                               | 56                                 |  |
| STRUCTURE OMISSION                      |           |         |              |                                  |                        |                       |                                  | 932                                |  |
| SN 050-2056 = STA 369+48                |           |         |              |                                  |                        |                       |                                  |                                    |  |
| 370+63                                  | TO 370+94 | RT      | 31           | 14                               | 14                     | 7                     | 31                               | 62                                 |  |
| 370+94                                  | TO 410+22 | LT & RT | 3928         | 3492                             | 3492                   | 1572                  | 7761                             | 15712                              |  |
| 410+22                                  | TO 410+37 | RT      | 15           | 7                                | 7                      | 3                     | 15                               | 30                                 |  |
| N 19TH RD = STA 410+60                  |           |         |              |                                  |                        |                       |                                  |                                    |  |
| 410+86                                  | TO 443+52 | LT & RT | 3266         | 2904                             | 2904                   | 1307                  | 6532                             | 13064                              |  |
| 443+52                                  | TO 444+55 | LT      | 103          | 46                               | 46                     | 21                    | 103                              | 206                                |  |
| STRUCTURE OMISSION                      |           |         |              |                                  |                        |                       |                                  | 784                                |  |
| SN 050-2057 = STA 445+60                |           |         |              |                                  |                        |                       |                                  |                                    |  |
| 446+51                                  | TO 447+67 | RT      | 116          | 52                               | 52                     | 24                    | 116                              | 232                                |  |
| 447+67                                  | TO 463+39 | LT & RT | 1572         | 1398                             | 1398                   | 629                   | 3144                             | 6288                               |  |
| N 18TH RD = STA 463+62                  |           |         |              |                                  |                        |                       |                                  |                                    |  |
| 463+89                                  | TO 515+00 | LT & RT | 5111         | 4544                             | 4544                   | 2045                  | 10142                            | 20444                              |  |
| 515+00                                  | TO 516+25 | RT      | 125          | 56                               | 56                     | 25                    | 125                              | 250                                |  |
| N 17TH RD = STA 516+25                  |           |         |              |                                  |                        |                       |                                  |                                    |  |
| 516+25                                  | TO 517+17 | RT      | 92           | 41                               | 41                     | 19                    | 92                               | 184                                |  |
| 517+17                                  | TO 567+88 | LT & RT | 5071         | 4508                             | 4508                   | 2029                  | 10142                            | 20284                              |  |
| E 28TH RD = STA 568+12                  |           |         |              |                                  |                        |                       |                                  |                                    |  |
| 568+36                                  | TO 617+12 | LT & RT | 4876         | 4335                             | 4335                   | 1951                  | 9752                             | 19504                              |  |
| 617+12                                  | TO 617+68 | LT      | 56           | 25                               | 25                     | 12                    | 56                               | 112                                |  |
| <b>PAGE ONE SUBTOTAL</b>                |           |         | <b>30202</b> | <b>26568</b>                     | <b>26568</b>           | <b>11960</b>          | <b>59442</b>                     | <b>122126</b>                      |  |

\*QUANTITY REPRESENTS TWO SEPARATE APPLICATIONS

MODEL: \\MODELM\JAMES  
FILE: \\MODELM\JAMES\work\shd\shd\budzynskim\075054\0366M16-shd-cover.dgn

|                              |            |           |
|------------------------------|------------|-----------|
| USER NAME = budzynskim       | DESIGNED - | REVISED - |
|                              | DRAWN -    | REVISED - |
| PLOT SCALE = 100.0000' / in. | CHECKED -  | REVISED - |
| PLOT DATE = 3/21/2022        | DATE -     | REVISED - |

**STATE OF ILLINOIS  
DEPARTMENT OF TRANSPORTATION**

**SCHEDULES**

SCALE: SHEET OF SHEETS STA. TO STA.

|                           |                |         |              |           |
|---------------------------|----------------|---------|--------------|-----------|
| F.A.P. RTE.               | SECTION        | COUNTY  | TOTAL SHEETS | SHEET NO. |
| 786                       | (110, 111) SFY | LASALLE | 10           | 6         |
| CONTRACT NO. 66M16        |                |         |              |           |
| ILLINOIS FED. AID PROJECT |                |         |              |           |

| SHOULDER REMOVAL & REPLACEMENT SCHEDULE (CONT.) |           |         |        |                            |                  |                    |                            |                              |
|---|-----------|---------|--------|----------------------------|------------------|--------------------|----------------------------|------------------------------|
| LOCATION  |           | SIDE    | LENGTH | SHOULDER REMOVAL (SPECIAL) | HMA SHOULDERS 8" | BIT MTLs TACK COAT | SHOULDER RUMBLE STRIPS, 8" | *PAINT PVMT MARKING WHITE 4" |
| STA   | TO STA    | LT / RT | FOOT   | SQ YD                      | SQ YD            | POUND              | FOOT                       | FOOT                         |
| N 17TH RD = STA 617+68                          |           |         |        |                            |                  |                    |                            |                              |
| 617+68  | TO 618+42 | LT      | 74     | 33                         | 33               | 15                 | 74                         | 148                          |
| 618+42  | TO 622+53 | LT & RT | 411    | 366                        | 366              | 165                | 822                        | 1644                         |
| 622+53  | TO 623+22 | LT      | 69     | 31                         | 31               | 14                 | 69                         | 138                          |
| E 27TH RD = STA 623+22                          |           |         |        |                            |                  |                    |                            |                              |
| 623+22  | TO 623+98 | LT      | 76     | 34                         | 34               | 16                 | 76                         | 152                          |
| 623+98  | TO 671+91 | LT & RT | 4793   | 4261                       | 4261             | 1918               | 9416                       | 19172                        |
| 671+91  | TO 672+07 | LT      | 16     | 8                          | 8                | 4                  | 16                         | 32                           |
| N 16TH RD = STA 672+36                          |           |         |        |                            |                  |                    |                            |                              |
| PAGE TWO SUBTOTAL                               |           |         | 5439   | 4733                       | 4733             | 2132               | 10473                      | 21286                        |
| TOTAL   |           |         | 35641  | 31301                      | 31301            | 14092              | 69915                      | 143412                       |

| MAILBOX TURNOUT SCHEDULE |    |                     |                        |                    |
|--------------------------|----|---------------------|------------------------|--------------------|
| STA / SIDE               |    | HMA SURF REMOVAL 2" | INCIDENTAL HMA SURF 2" | BIT MTLs TACK COAT |
|                          |    | SQ YD               | TON                    | POUND              |
| 348+78                   | LT | 6.0                 | 0.7                    | 3                  |
| 360+53                   | RT | 6.0                 | 0.7                    | 3                  |
| 400+65                   | RT | 4.0                 | 0.5                    | 2                  |
| 504+18                   | LT | NO WORK             | -                      | -                  |
| 625+38                   | LT | NO WORK             | -                      | -                  |
| 664+00                   | LT | NO WORK             | -                      | -                  |
| TOTAL                    |    | 16.0                | 1.9                    | 8                  |

THE FIRST 4 FEET OF THE MBTO ADJACENT TO THE TRAVELED WAY IS PAID AS SHOULDER REMOVAL (SPECIAL) AND HMA SHOULDERS 8". THE REMAINING AREA OF THE MBTO IS PAID AS HMA SURFACE REMOVAL 2" AND INCIDENTAL HMA SURFACE 2".

\*QUANTITY REPRESENTS TWO SEPARATE APPLICATIONS

| SURVEY MONUMENT TABLE |   |                        |                        |                                |                |
|-----------------------|---|------------------------|------------------------|--------------------------------|----------------|
| MONUMENT NUMBER       | DESCRIPTION   | EXISTING MONUMENT TYPE | PROPOSED MONUMENT TYPE | MONUMENT RECORD TO BE RECORDED | RESPONSIBILITY |
| N/A                   | NO CENTERLINE CONTROL OR LAND SURVEY PERMANENT SURVEY MARKERS TO BE SET ON THIS JOB | N/A                    | N/A                    | N/A                            | N/A            |

ONLY THE ORIGINAL SCOPE OF THIS JOB HAS BEEN SEARCHED FOR MONUMENTS. R.E. MUST INFORM PLATS AND PLANS TO SEARCH FOR ADDITIONAL MONUMENTS PRIOR TO CONSTRUCTION IF ADDENDUMS ARE ADDED.

NO KNOWN LAND SURVEY OR CENTERLINE CONTROL MONUMENTS WILL BE DISTURBED BY THE CONSTRUCTION.

UNKNOWN MONUMENTS MAY EXIST. IF AN UNLISTED MONUMENT IS FOUND, R.E. IS REQUIRED TO PROTECT THE MONUMENT FROM DAMAGE UNTIL A PLATS AND PLANS LAND SURVEYOR CAN DOCUMENT THE MONUMENT. PLATS AND PLANS WILL RESET SUCH MONUMENTS IN KIND FOLLOWING CONSTRUCTION.

NO MONUMENT RECORDS ARE REQUIRED FOR THIS JOB.

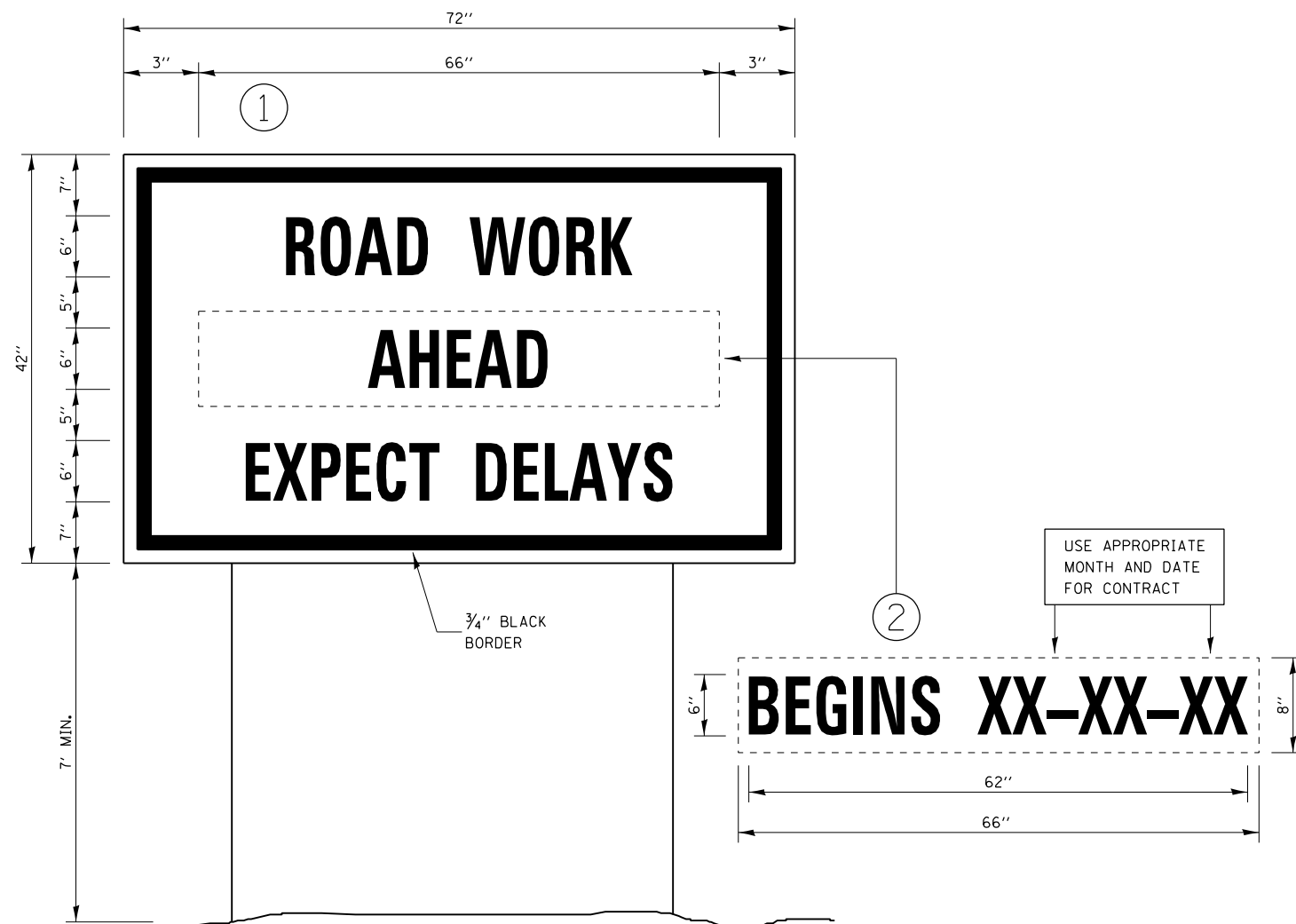
MODEL: \\MODELM\MAILS  
FILE: \\MAILS\csp\work\side\budzynskim\075064\0366416-sh-cove.dgn

|                              |            |           |
|------------------------------|------------|-----------|
| USER NAME = budzynskim       | DESIGNED - | REVISED - |
|                              | DRAWN -    | REVISED - |
| PLOT SCALE = 100,0000' / in. | CHECKED -  | REVISED - |
| PLOT DATE = 3/21/2022        | DATE -     | REVISED - |

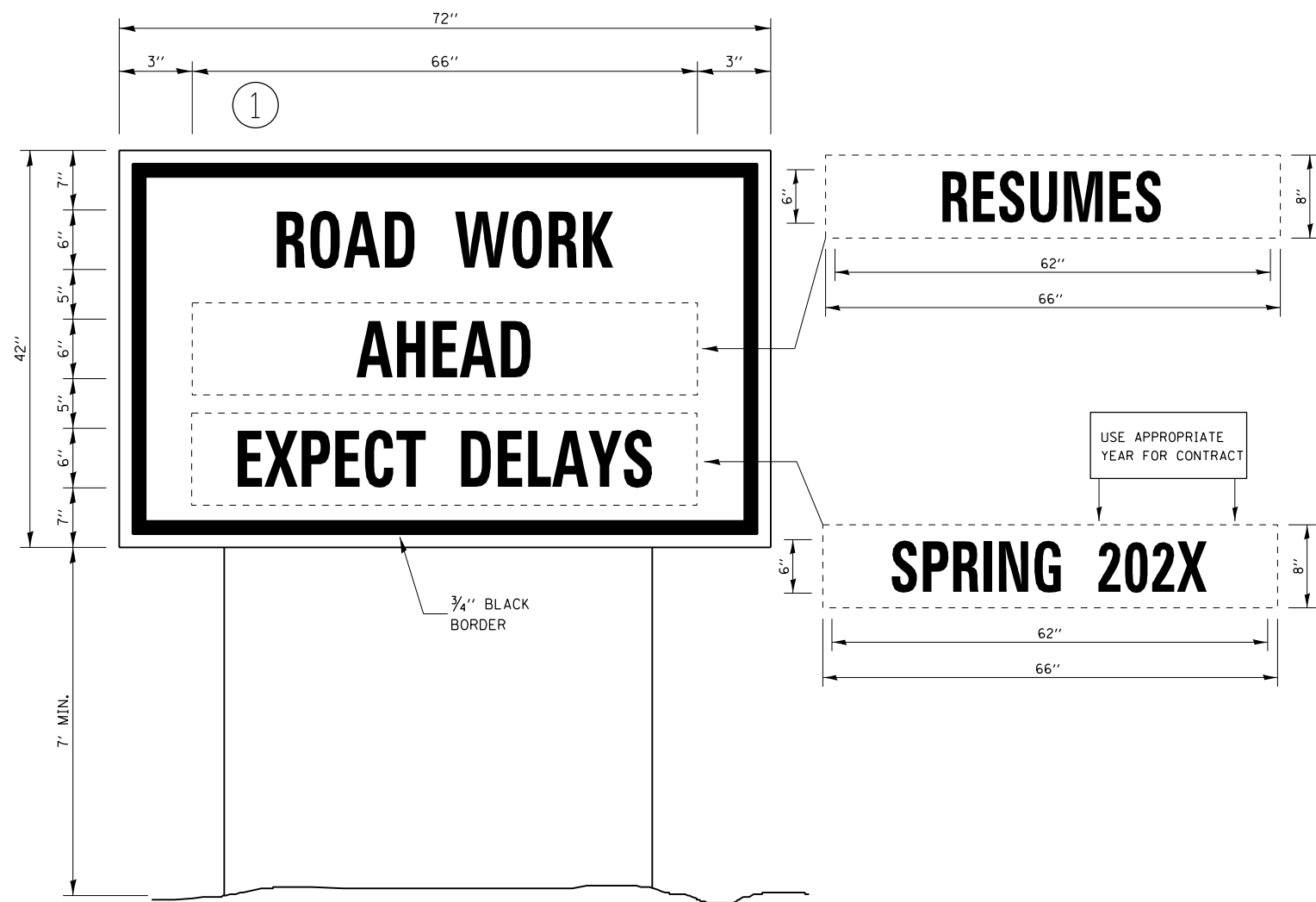
STATE OF ILLINOIS  
DEPARTMENT OF TRANSPORTATION

| SCHEDULES |       |           |              |
|-----------|-------|-----------|--------------|
| SCALE:    | SHEET | OF SHEETS | STA. TO STA. |
|           |       |           |              |

|                           |                |         |                    |           |
|---------------------------|----------------|---------|--------------------|-----------|
| F.A.P. RTE.               | SECTION        | COUNTY  | TOTAL SHEETS       | SHEET NO. |
| 786                       | (110, 111) SFY | LASALLE | 10                 | 7         |
|                           |                |         | CONTRACT NO. 66M16 |           |
| ILLINOIS FED. AID PROJECT |                |         |                    |           |



**TEMPORARY INFORMATION SIGNING**



**WINTER SHUT DOWN SIGNING**

**NOTES:**

1. USE 6" D BLACK LETTERING ON FLOURESENT ORANGE BACKGROUND.
2. ERECT SIGNS AT LOCATIONS IN ADVANCE OF THE "ROAD CONSTRUCTION AHEAD" SIGNS AS DIRECTED BY THE ENGINEER.
3. ERECT SIGN ① WITH INSTALLED PANEL ② A MINIMUM OF ONE WEEK PRIOR TO THE START OF THE LANE CLOSURE.
4. REMOVE PANEL ② ON THAT DATE.
5. SEE SPECIAL PROVISION "TEMPORARY INFORMATION SIGNING" FOR ADDITIONAL INFORMATION.
6. WILL BE PAID FOR PER SQ FT AS "TEMPORARY INFORMATION SIGNING". EACH SIGN = 21 SQ FT AND THE DATE PANEL ② WILL NOT BE MEASURED SEPARATELY FOR PAYMENT.

MODEL NAME: MAM16  
FILE NAME: sign\_workshop\budzynskim\075064\0366M16-shr-cover.dgn

|                              |            |           |
|------------------------------|------------|-----------|
| USER NAME = budzynskim       | DESIGNED - | REVISED - |
|                              | DRAWN -    | REVISED - |
| PLOT SCALE = 100.0000' / in. | CHECKED -  | REVISED - |
| PLOT DATE = 3/21/2022        | DATE -     | REVISED - |

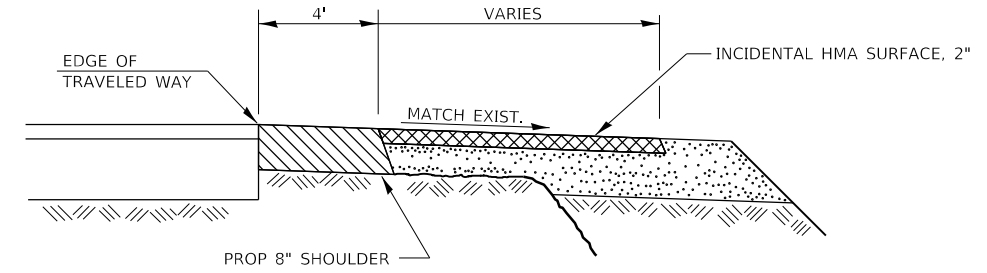
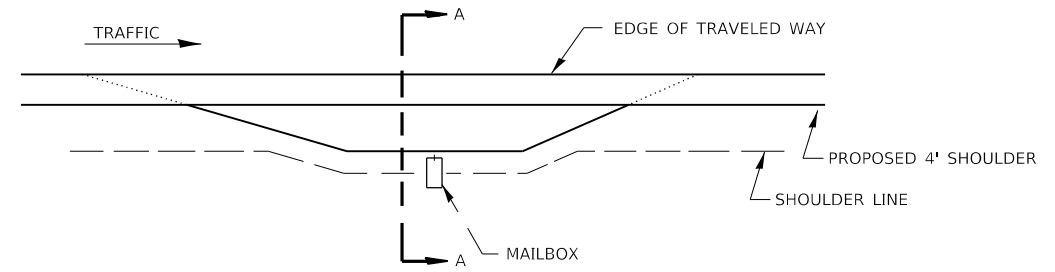
**STATE OF ILLINOIS  
DEPARTMENT OF TRANSPORTATION**

**DETAILS**

SCALE: SHEET OF SHEETS STA. TO STA.

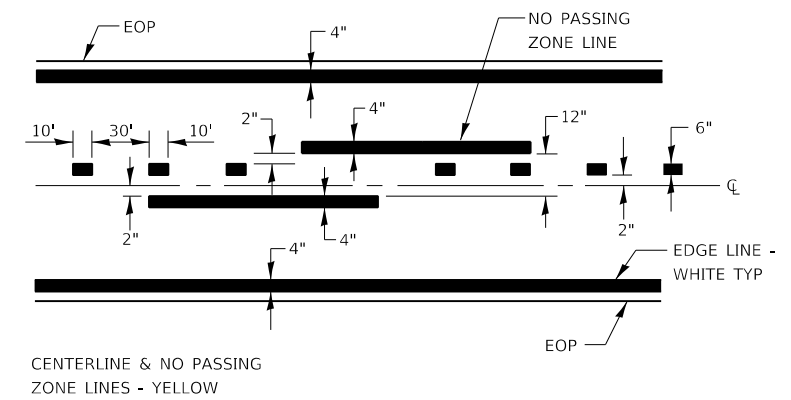
| F.A.P. RTE.               | SECTION        | COUNTY  | TOTAL SHEETS | SHEET NO. |
|---------------------------|----------------|---------|--------------|-----------|
| 786                       | (110, 111) SFY | LASALLE | 10           | 8         |
| CONTRACT NO. 66M16        |                |         |              |           |
| ILLINOIS FED. AID PROJECT |                |         |              |           |





**SECTION A-A**

**RURAL MAILBOX TURNOUT DETAILS**



**PAVEMENT MARKING**

MODEL: \\MODELMARKETS  
 FILE: \\markets\_cad\work\sidejob\budzynskim\075064\0366M16-shr-cover.dwg

|                              |            |           |
|------------------------------|------------|-----------|
| USER NAME = budzynskim       | DESIGNED - | REVISED - |
|                              | DRAWN -    | REVISED - |
| PLOT SCALE = 100,0000' / in. | CHECKED -  | REVISED - |
| PLOT DATE = 3/21/2022        | DATE -     | REVISED - |

**STATE OF ILLINOIS  
DEPARTMENT OF TRANSPORTATION**

**DETAILS**

SCALE: SHEET OF SHEETS STA. TO STA.

|                           |                |         |              |           |
|---------------------------|----------------|---------|--------------|-----------|
| F.A.P. RTE.               | SECTION        | COUNTY  | TOTAL SHEETS | SHEET NO. |
| 786                       | (110, 111) SFY | LASALLE | 10           | 9         |
| CONTRACT NO. 66M16        |                |         |              |           |
| ILLINOIS FED. AID PROJECT |                |         |              |           |

