

F.A. RTE.	SECTION	COUNTY	TOTAL SHEETS	SHEET NO.
-	*	SCOTT	6	1
		ILLINOIS	CONTRACT NO. 93787	
* 21-00056-00-SC & 21-00057-00-SC				

06-17-2022 LETTING ITEM 124

STATE OF ILLINOIS
DEPARTMENT OF TRANSPORTATION
DIVISION OF HIGHWAYS

PLANS FOR PROPOSED
SURFACE TRANSPORTATION/RURAL PROGRAM
SCOTT COUNTY
SECTION 21-00056-00-SC & 21-00057-00-SC
COUNTY HIGHWAY 9 & COUNTY HIGHWAY 14
PROJECT NO. 2GF2(075)
JOB NO. C-96-001-23



INDEX OF SHEETS

1	COVER SHEET
2	GENERAL NOTES, LEGEND, SUMMARY OF QUANTITIES, SCHEDULES OF QUANTITIES, TYPICAL SECTION
3-4	COUNTY HIGHWAY 9 - ROADWAY PLANS
5-6	COUNTY HIGHWAY 14 - ROADWAY PLANS

REQUIRED STANDARDS

000001-08	STANDARD SYMBOLS, ABBREVIATIONS, AND PATTERNS
701006-05	OFF-RD OPERATIONS, 2L, 2W, 15' (4.5m) TO 24" (600mm) FROM PAVEMENT EDGE
701201-05	LANE CLOSURE, 2L, 2W, DAY ONLY, FOR SPEEDS ≥ 45 MPH
701301-04	LANE CLOSURE, 2L, 2W, SHORT TERM OPERATIONS
701306-04	LANE CLOSURE 2L, 2W SLOW MOVING OPERATIONS DAY ONLY, FOR SPEEDS > 45MPH
701311-03	LANE CLOSURE 2L, 2W MOVING OPERATIONS - DAY ONLY
701901-08	TRAFFIC CONTROL DEVICES
BLR 21-9	TYPICAL APPLICATION OF TRAFFIC CONTROL DEVICES FOR CONSTRUCTION ON RURAL LOCAL HIGHWAYS
BLR 22-7	TYPICAL APPLICATION OF TRAFFIC CONTROL DEVICES FOR CONSTRUCTION ON RURAL LOCAL HIGHWAYS (TWO-LANE TWO-WAY RURAL TRAFFIC) (ROAD CLOSED TO THRU TRAFFIC)

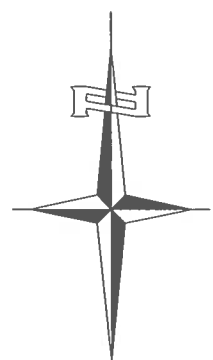
GAS & ELECTRIC
ILLINOIS ELECTRIC COOPERATIVE

TELEPHONE & INTERNET
FRONTIER COMMUNICATIONS



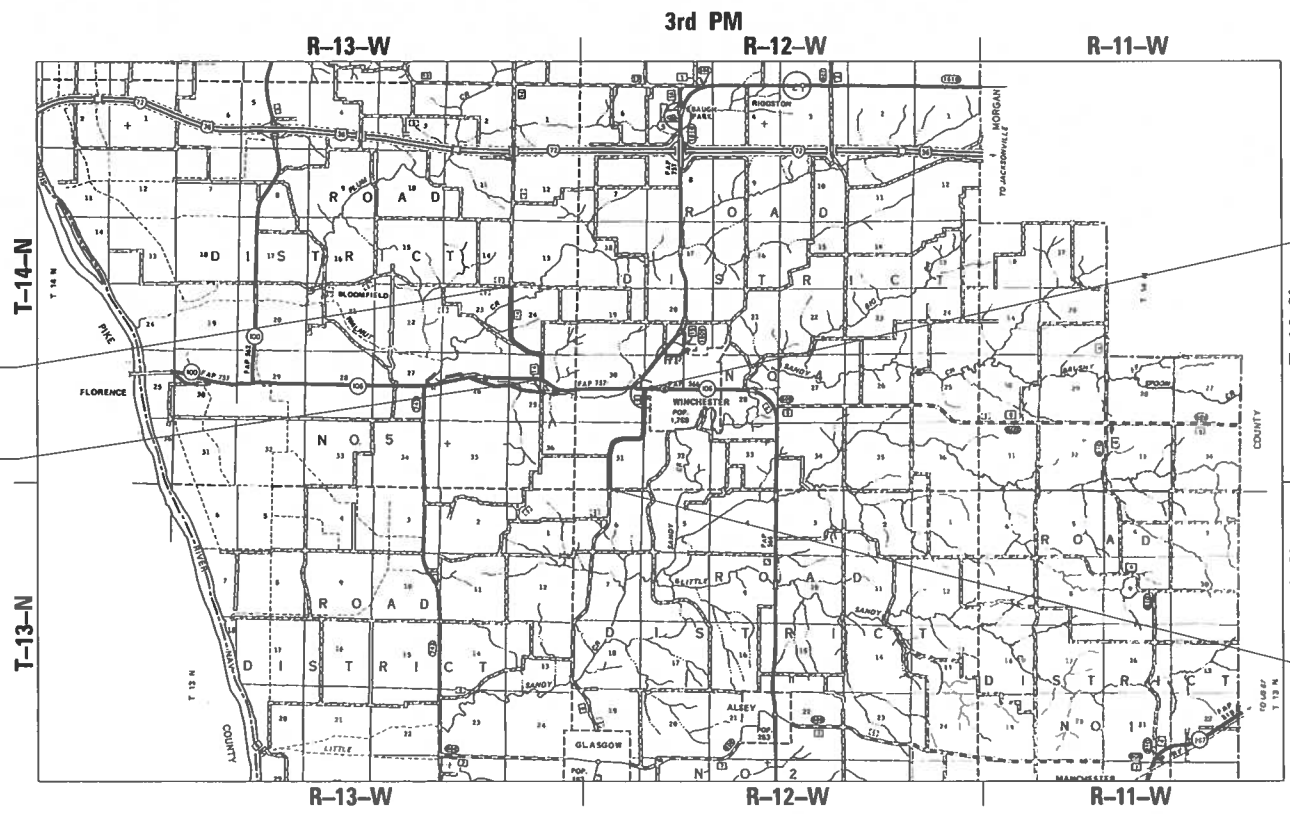
FULL SIZE PLANS HAVE BEEN PREPARED USING STANDARD ENGINEERING SCALES. REDUCED SIZE PLANS WILL NOT CONFORM TO STANDARD SCALES. IN MAKING MEASUREMENTS ON REDUCED PLANS THE ABOVE SCALES MAY BE USED.

J.U.L.I.E.
JOINT UTILITY LOCATION INFORMATION FOR EXCAVATION
1-800-892-0123 OR 811



SEC 21-00057-00-SC
CH 14 ENDS
STATION 394+18.00

SEC 21-00057-00-SC
CH 14 BEGINS
STATION 300+15.00



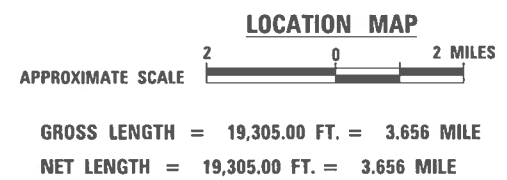
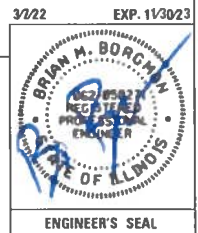
SEC 21-00056-00-SC
CH 9 ENDS
STATION 199+96.00

SEC 21-00056-00-SC
CH 9 BEGINS
STATION 100+00.00

DESCRIPTION OF WORK
THIS PROJECT CONSISTS OF FULL-DEPTH RECLAMATION, 10" WITH CEMENT, BITUMINOUS SURFACE TREATMENT, A-2 AND RELATED WORK ON SCOTT COUNTY HIGHWAY 9 FROM VAN METER LANE TO IL 106 AND ON SCOTT COUNTY HIGHWAY 14 FROM IL 106 TO BLOOMFIELD ROAD.

APPROVED	<i>March 4, 2022</i>	20	22
	<i>Scott County Engineer</i>		
PASSED	<i>March 30, 2022</i>	20	22
	<i>District Six Engineer of Local Roads & Streets</i>		
Releasing For Bid Based on Limited Review	<i>March 30, 2022</i>	20	22
	<i>Deputy Director of Highways, Region Four Engineer</i>		
	STATE OF ILLINOIS DEPARTMENT OF TRANSPORTATION		

HUTCHISON ENGINEERING, INC
CONSULTING ENGINEERS
JACKSONVILLE, ILLINOIS
2022 JOB NO 4936



CONTRACT NO. 93787

PLOT DATE : 3/18/2022 Ch 9 & Ch 14 (Scott County) (C:\000\CAD00\Drawings\93787-C001.dgn)
PLOT SCALE : 1/8"=100'-0" / 1"=1200'-0"
USER NAME : CThomas

GENERAL NOTES

1. THE LOCATION OF UNDERGROUND UTILITIES SHOWN ON THE PLANS REPRESENTS THE BEST KNOWLEDGE OF THE COUNTY AND THE INDICATED ADJUSTMENTS OR RECONSTRUCTION ARE CONSIDERED TO BE REASONABLY ACCURATE. IT SHALL BE THE CONTRACTOR'S RESPONSIBILITY TO VERIFY LOCATIONS OF UNDERGROUND INSTALLATIONS BEFORE STARTING CONSTRUCTION OPERATIONS. THE CONTRACTOR SHALL INDEMNIFY THE COUNTY, ITS OFFICERS, AND EMPLOYEES AGAINST ALL CLAIMS DUE TO DAMAGE TO CORPORATE OR PRIVATE PROPERTY RESULTING FROM HIS CONSTRUCTION OPERATIONS AS DESCRIBED IN ARTICLE 107.20 AND 107.26 OF THE STANDARD SPECIFICATIONS FOR ROAD AND BRIDGE CONSTRUCTION.
2. THE CONTRACTOR SHALL NOTIFY THE AGENCIES AND UTILITIES AT LEAST 10 (TEN) DAYS PRIOR TO ANY CONSTRUCTION IN THE AREA AND SHALL COMPLY WITH ALL RESTRICTIONS FOR EQUIPMENT MOVEMENTS AND CLEARANCES AS REGARDS TO THEIR FACILITIES.
3. BEFORE STARTING ANY WORK, THE CONTRACTOR MUST CALL J.U.L.I.E. AT 1-800-892-0123 FOR FIELD LOCATIONS OF BURIED ELECTRICAL, TELEPHONE, GAS FACILITIES, AND ALL PUBLIC UTILITIES. A 48 HOUR NOTIFICATION IS REQUIRED.
4. WHEN DURING CONSTRUCTION OPERATIONS ANY LOOSE MATERIAL IS DEPOSITED IN THE FLOW LINE OF DITCHES, GUTTER OR DRAINAGE STRUCTURES SO THAT THE NATURAL FLOW OF WATER IS OBSTRUCTED, IT SHALL BE REMOVED AT THE CLOSE OF EACH WORKING DAY. AT THE CONCLUSION OF THE CONSTRUCTION OPERATIONS, ALL DRAINAGE STRUCTURES SHALL BE FREE FROM ALL DIRT AND DEBRIS. THIS WORK WILL NOT BE PAID FOR SEPARATELY BUT SHALL BE INCLUDED IN THE COST OF THE PROJECT.
5. ALL REFERENCES TO "THE DEPARTMENT" OR "ENGINEER" IN THE IDOT STANDARD SPECIFICATIONS OR THE PROJECT PLANS AND SPECIFICATIONS SHALL ALSO INCLUDE THE SCOTT COUNTY ENGINEER OR HIS DESIGNEE.
6. THE CONTRACTOR SHALL BE REQUIRED TO PROVIDE ACCESS TO ABUTTING PROPERTY AT ALL TIMES DURING THE CONSTRUCTION OF THIS IMPROVEMENT, UNLESS ARRANGEMENTS ARE MADE IN WRITING BY THE CONTRACTOR WITH THE PROPERTY OWNERS, WITH A COPY OF THE ARRANGEMENT TO BE PROVIDED TO THE ENGINEER.
7. TRAFFIC CONTROL SIGNS REMOVED MUST BE RESET AT THEIR PERMANENT LOCATIONS IN A WORKMANLIKE MANNER AND VISIBLE TO TRAFFIC ON THE ROADWAY. THESE SIGNS SHALL BE INSTALLED IN ACCORDANCE WITH THE 'MANUAL ON UNIFORM TRAFFIC CONTROL DEVICES FOR STREET AND HIGHWAYS', LATEST EDITION. THE COST OF SUCH WORK SHALL BE INCLUDED IN THE COST OF THE PROJECT.
8. SIDEROADS WITH EXISTING CHIP SEAL SURFACES WILL BE RESURFACED WITH THE BITUMINOUS SURFACE TREATMENT, AFTER GRADING, TO THE END OF THE RADIUS RETURNS OR AS DIRECTED BY THE ENGINEER.
9. WHERE SECTION OR SUBSECTION STONES OR MARKERS ARE ENCOUNTERED, THE ENGINEER SHALL BE NOTIFIED BEFORE SUCH STONES ARE REMOVED. THE CONTRACTOR SHALL PROTECT AND CAREFULLY PRESERVE ALL PROPERTY MARKERS UNTIL THE OWNER, AN AUTHORIZED SURVEYOR, OR AGENT HAS WITNESSED OR OTHERWISE REFERENCED THEIR LOCATION.
10. ALL PROPOSED PAVEMENT WIDTHS ARE MEASURED EDGE TO EDGE OF PAVEMENT UNLESS OTHERWISE SHOWN ON THE PLANS. INTERSECTION RETURN RADII ARE MEASURED TO THE EDGE OF PAVEMENT.
11. THE SURFACE PROFILE MILLING QUANTITY AND LOCATIONS WILL BE AT THE DISCRETION OF THE ENGINEER.

APPLICATION RATES USED IN QUANTITY CALCULATIONS

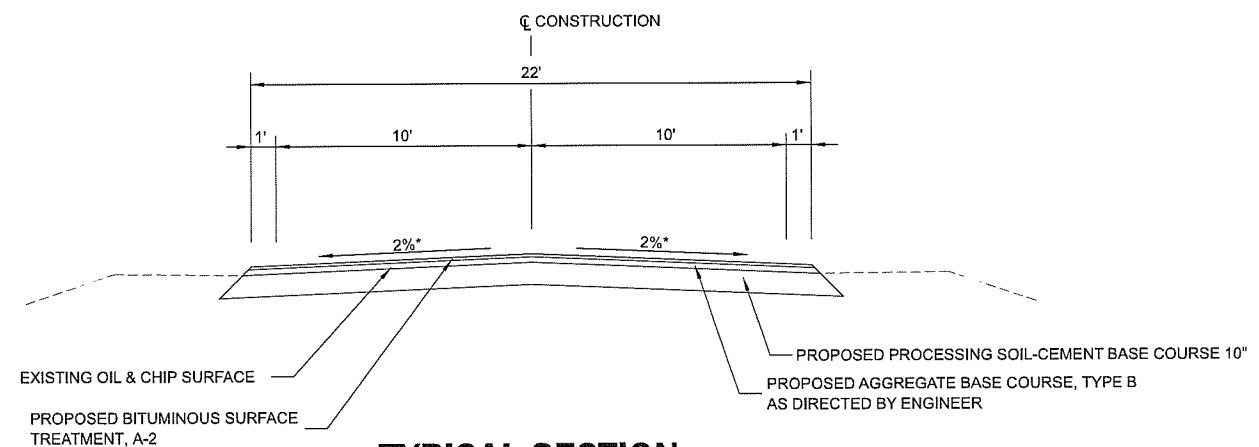
- GRANULAR MATERIALS - 25LB/SY
- BITUMINOUS MATERIALS (PRIME COAT) - 0.25 GAL/SY (8.40 LB/GAL)
- BITUMINOUS MATERIALS (COVER COAT) - 0.35 GAL/SY (8.40 LB/GAL)
- BITUMINOUS MATERIALS (SEAL COAT) - 0.30 GAL/SY (8.40 LB/GAL)

SUPERELEVATION SCHEDULE			
CURVE	RADIUS	e	TRANSITION LENGTH
1	2620.00'	REMOVE CROWN	50'
2	515.00'	6%	125'
3	515.00'	6%	125'
4	6530.00'	NORMAL CROWN	0'
5	385.00'	7%	142'
6	829.35'	5%	109'

CODE NO.	ITEM	UNIT	TOTAL QUANTITY	CONSTR. CODE	
				ROADWAY	
				21-00056-00-SC	21-00057-00-SC
35101400	AGGREGATE BASE COURSE, TYPE B	TON	2592	0	2592
35200410	PROCESSING SOIL-CEMENT BASE COURSE 10"	SQ YD	47190	24435	22755
35200500	CEMENT	100 WT	32208	16677	15531
40200800	AGGREGATE SURFACE COURSE, TYPE B	TON	200	100	100
67100100	MOBILIZATION	L SUM	1	0.5	0.5
* LR403200	BITUMINOUS MATERIALS (PRIME COAT)	TON	50	26	24
* LR403300	SURFACE PROFILE MILLING	SQ YD	47190	24435	22755
* LR403400	BITUMINOUS MATERIALS (COVER AND SEAL COATS)	TON	129	67	62
* LR403500	COVER COAT AGGREGATE	TON	590	305	285
# 20076600	TRAINEES	Hour	500		
* LR403600	SEAL COAT AGGREGATE	TON	590	305	285
# 20076604	TRAINEES TRAINING PROGRAM GRADUATE	Hour	500		
* X7010216	TRAFFIC CONTROL AND PROTECTION, (SPECIAL)	L SUM	1	0.5	0.5

* SEE SPECIAL PROVISIONS # 0042

PAVEMENT SCHEDULE												
STATION TO STATION	WIDTH	LENGTH	SQ YD	LR403200	LR403400	LR403500	LR403600	35200410	35200500	35101400	LR403300	
				BITUMINOUS MATERIALS (PRIME COAT)	BITUMINOUS MATERIALS (COVER & SEAL COAT)	COVER COAT AGGREGATE	SEAL COAT AGGREGATE	PROCESSING SOIL-CEMENT BASE COURSE 10"	CEMENT	AGGREGATE BASE COURSE, TYPE B	SURFACE PROFILE MILLING	
				TON				SQ YD	100 WT	TON	SQ YD	
COUNTY HIGHWAY 9 (SEC. 21-00056-00-SC)												
100+00	199+96	22'	9996'	24,435	26	67	305	305	24435	16677		24435
COUNTY HIGHWAY 14 (SEC. 21-00057-00-SC)												
300+15	394+18	22'	9403'	22,755	24	62	285	285	22755	15531	2592	22755
TOTALS					50	129	590	590	47190	32208	2592	47190



TYPICAL SECTION

COUNTY HIGHWAY 9
STA 100+00.00 TO STA 199+96.00
COUNTY HIGHWAY 14
STA 300+15.00 TO STA 393+24.00

*SEE SUPERELEVATION SCHEDULE

MODEL & MODEL NAME: V:\ASB\CH 9 & CH 14 (Scott County)\CADD\CADD Sheets\4894-C001.dgn

USER NAME = CThomas	DESIGNED -	REVISED -
PLOT SCALE = 100.0000' / in.	DRAWN -	REVISED -
PLOT DATE = 3/17/2022	CHECKED -	REVISED -
	DATE -	REVISED -

**SCOTT COUNTY
HIGHWAY DEPARTMENT**

**GENERAL NOTES, LEGEND, SUMMARY OF QUANTITIES,
SCHEDULES OF QUANTITIES, TYPICAL SECTION**

SCALE: NONE SHEET 1 OF 1 SHEETS STA. TO STA.

F.A.S. RTE.	SECTION	COUNTY	TOTAL SHEETS	SHEET NO.
-	-	SCOTT	6	2
ILLINOIS FED. AID PROJECT			CONTRACT NO. 93787	

* 21-00056-00-SC & 21-00057-00-SC



MODEL: 1400BELMAME
FILE NAME: W3936 - Ch 9 & CH 14 (Scott County)\CADD\CADD Sheets\4936-Ch9-PR.dgn

USER NAME	= CThomas	DESIGNED	-	REVISED	-
DRAWN	-	REVISIONS	-	REVISED	-
PLOT SCALE	= 200.000000002' / in.	CHECKED	-	REVISED	-
PLOT DATE	= 3/17/2022	DATE	-	REVISED	-

**SCOTT COUNTY
HIGHWAY DEPARTMENT**

**PLAN
COUNTY HIGHWAY 9 (WINCHESTER-GLASGOW ROAD)**

SCALE: 1"=100' SHEET 1 OF 2 SHEETS STA. 100+00.00 TO STA. 150+00.00

F.A.S. RTE.	SECTION	COUNTY	TOTAL SHEETS	SHEET NO.
	*	SCOTT	6	3
CONTRACT NO. 93787				
ILLINOIS FED. AID PROJECT				

* 21-00056-00-SC & 21-00057-00-SC



MODEL: \\MODEL\NAME
 FILE NAME: \\3939 - CH 9 & CH 14 (Scott County)\CADD\CADD Sheets\4936-CH9-PP.dgn

USER NAME	CTThomas	DESIGNED	-	REVISED	-
DRAWN	-	REVISIONS	-	REVISIONS	-
PLOT SCALE	200.000000002' / in.	CHECKED	-	REVISIONS	-
PLOT DATE	3/17/2022	DATE	-	REVISIONS	-

**SCOTT COUNTY
HIGHWAY DEPARTMENT**

**PLAN
COUNTY HIGHWAY 9 (WINCHESTER-GLASGOW ROAD)**

SCALE: 1"=100' SHEET 2 OF 2 SHEETS STA. 150+00.00 TO STA. 200+06.97

F.A.S. RTE.	SECTION	COUNTY	TOTAL SHEETS	SHEET NO.
	*	SCOTT	6	4
CONTRACT NO. 93787				
ILLINOIS FED. AID PROJECT				

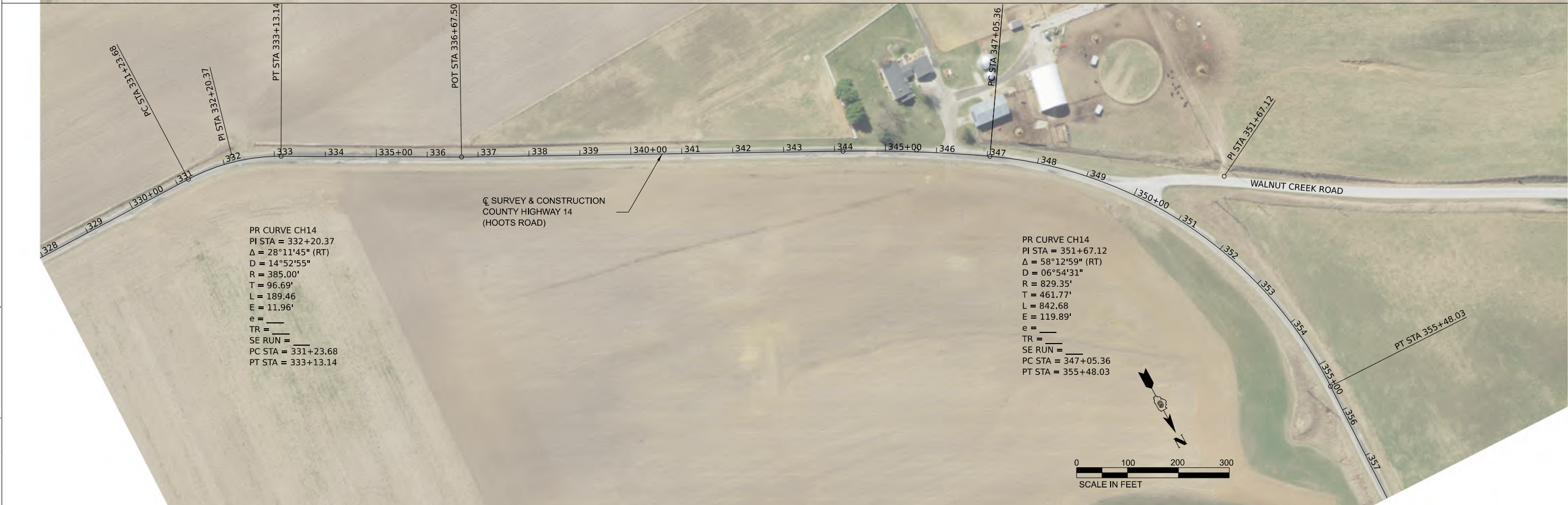
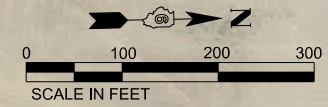
* 21-00056-00-SC & 21-00057-00-SC



PR CURVE CH14
 PI STA = 304+61.38
 $\Delta = 01^{\circ}15'26''$ (LT)
 $D = 00^{\circ}52'39''$
 $R = 6,530.00'$
 $T = 71.335'$
 $L = 149.229'$
 $E = 0.308'$
 $e =$
 $TR =$
 SE RUN =
 PC STA = 303+89.74
 PT STA = 305+33.03

SECTION 21-00057-00-SC
 BEGINS
 STATION 300+15.00

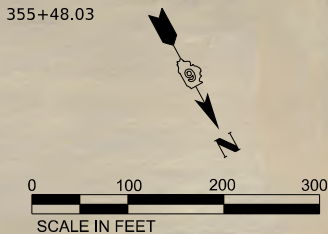
CL SURVEY & CONSTRUCTION
 COUNTY HIGHWAY 14
 (HOOTS ROAD)



PR CURVE CH14
 PI STA = 332+20.37
 $\Delta = 28^{\circ}11'45''$ (RT)
 $D = 14^{\circ}52'55''$
 $R = 385.00'$
 $T = 96.69'$
 $L = 189.46'$
 $E = 11.96'$
 $e =$
 $TR =$
 SE RUN =
 PC STA = 331+23.68
 PT STA = 333+13.14

CL SURVEY & CONSTRUCTION
 COUNTY HIGHWAY 14
 (HOOTS ROAD)

PR CURVE CH14
 PI STA = 351+67.12
 $\Delta = 58^{\circ}12'59''$ (RT)
 $D = 06^{\circ}54'31''$
 $R = 829.35'$
 $T = 461.77'$
 $L = 842.68'$
 $E = 119.89'$
 $e =$
 $TR =$
 SE RUN =
 PC STA = 347+05.36
 PT STA = 355+48.03



MODEL: \\MODEL\NAME FILES
 FILE NAME: \\3936 - CH 9 & CH 14 (Scott County)\CADD\CADD Sheets\4936-CH14-PR.dgn

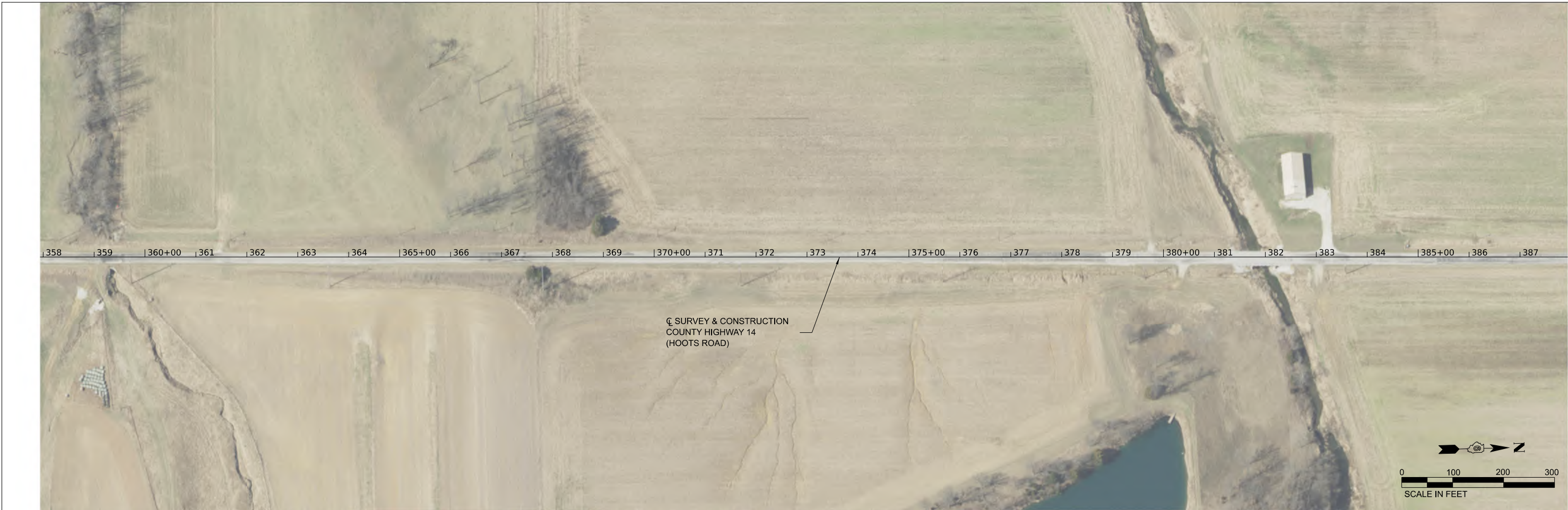
USER NAME = CThomas	DESIGNED - Designed By	REVISED - Revised By1
	DRAWN - Drawn By	REVISED - Revised By2
PLOT SCALE = 200.00000002' / 1 in.	CHECKED - Checked By	REVISED - Revised By3
PLOT DATE = 3/17/2022	DATE - Checked Date	REVISED - Revised By4

**SCOTT COUNTY
 HIGHWAY DEPARTMENT**

PLAN COUNTY HIGHWAY 14 (HOOTS ROAD)	
SCALE: 1"=100'	SHEET 1 OF 2 SHEETS
STA. 300+00.00	TO STA. 358+00.00

F.A.S. RTE.	SECTION	COUNTY	TOTAL SHEETS	SHEET NO.
	*	SCOTT	6	5
CONTRACT NO. 93787				
ILLINOIS FED. AID PROJECT				

* 21-00056-00-SC & 21-00057-00-SC



MODEL: 1400DELIMAMES
 FILE NAME: \\39395 - CH 9 & CH 14 (Scott County)\CADD\CADD Sheets\4936-CH14.dgn

USER NAME	= CThomas	DESIGNED	-	REVISED	-
DRAWN	-	REVISIONS	-	REVISIONS	-
PLOT SCALE	= 200.000000002' / in.	CHECKED	-	REVISIONS	-
PLOT DATE	= 3/17/2022	DATE	-	REVISIONS	-

**SCOTT COUNTY
HIGHWAY DEPARTMENT**

**PLAN
COUNTY HIGHWAY 14 (HOOTS ROAD)**

SCALE: 1"=100' SHEET 2 OF 2 SHEETS STA. 358+00.00 TO STA. 394+18.16

F.A.S. RTE.	SECTION	COUNTY	TOTAL SHEETS	SHEET NO.
	*	SCOTT	6	6
CONTRACT NO. 93787				
ILLINOIS FED. AID PROJECT				

* 21-00056-00-SC & 21-00057-00-SC