

06-17-2022 LETTING ITEM 134

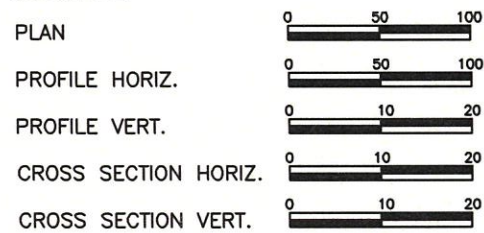
STATE OF ILLINOIS
 DEPARTMENT OF TRANSPORTATION
**PLANS FOR PROPOSED
 LOCAL AGENCY PROJECT**
 FAS 836/COUNTY HIGHWAY 10 RESURFACING
 STR FUNDS
 SECTION 18-00094-00-RS
 PROJECT NO. MFAJ (120)
 CITY OF OAKDALE, ILLINOIS
 WASHINGTON COUNTY
 JOB NO. C-98-009-22

F.A.S ROUTE	SECTION	COUNTY	TOTAL SHEETS	SHEET NUMBER
836	18-00094-00-RS	WASHINGTON	25	1
FEDERAL AID PROJECT			CONTRACT 97772	

INDEX OF SHEETS

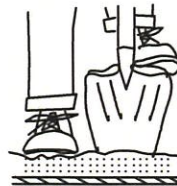
1. COVER SHEET
- 2.-3. SUMMARY OF QUANTITIES, GENERAL NOTES, COMMITMENTS AND SCHEDULES
- 4.-10. TYPICAL SECTIONS
- 11.-18. ROADWAY PLANS
- 19.-25. CROSS SECTIONS

SCALES:



FAS 836/COUNTY HIGHWAY 10
 ROADWAY DESIGNATION: MAJOR COLLECTOR
 DESIGN SPEED: 50 M.P.H
 ADT: CURRENT (2019): 500 (WEST OF ELKTON)
 (2019): 400 (WEST OF OAKDALE)
 (2019): 1050 (OAKDALE)

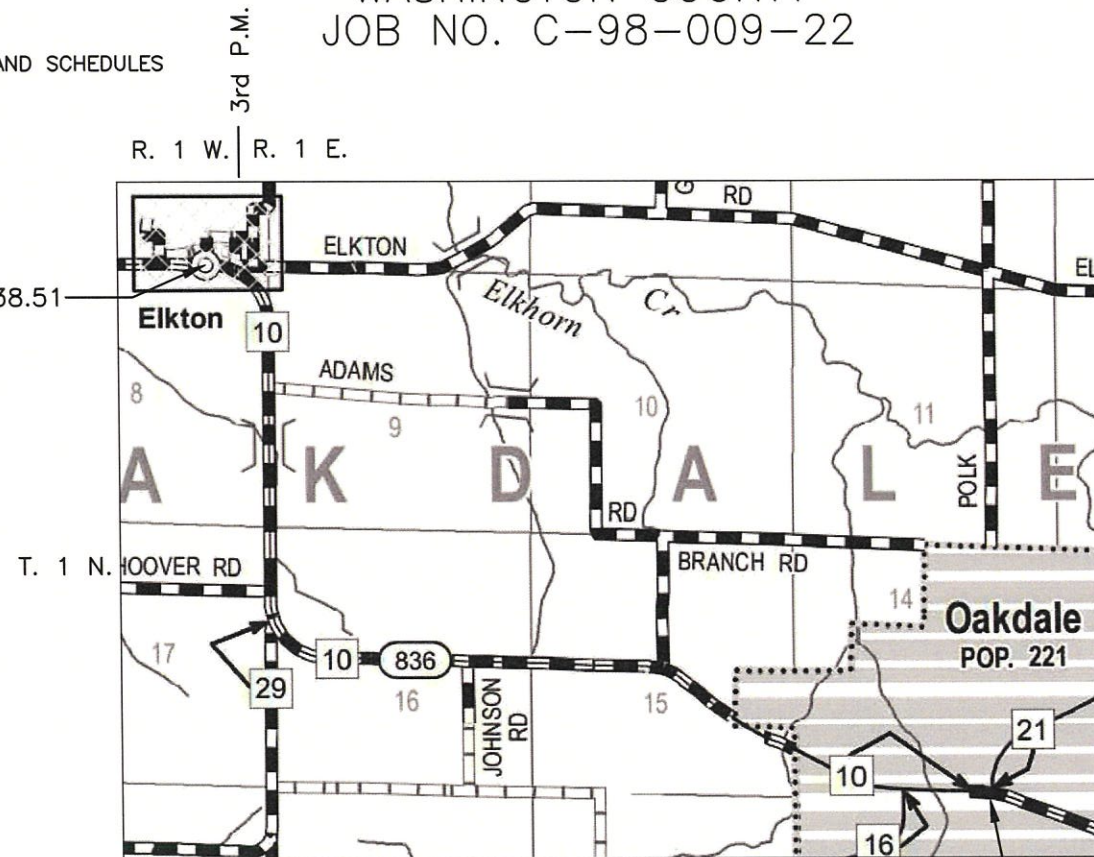
HOLD IT ! CALL BEFORE YOU DIG !
 Phone J.U.L.I.E.



The owner would like to remind you that underground utility facilities can be damaged by shovel blades or other digging equipment. You can prevent damage or possible personal danger by phoning 800/892-0123 at least 48 hours before you dig. That's the toll-free number for "J.U.L.I.E.", which stands for Joint Utilities Location Information for Excavators.

If there are any pipes, cables, lines or mains in the excavation area, utility personnel will be out to mark the facilities so you can work around them.

Toll Free 800/892-0123

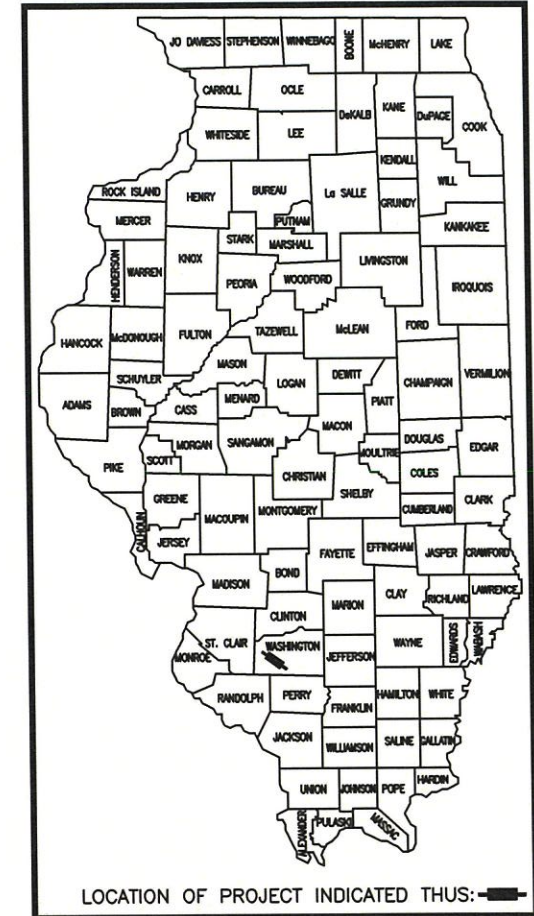


LOCATION MAP

NET LENGTH
 COUNTY HIGHWAY 10 = 23,497' = 4.450 miles
 GROSS LENGTH
 COUNTY HIGHWAY 10 = 23,497' = 4.450 miles

VOLKERT

CONSULTING ENGINEERS • LAND SURVEYORS
 CORPORATE OFFICE REGIONAL OFFICE
 4 INDUSTRIAL DRIVE 1500 EASTPORT PLAZA DRIVE
 FREEBURG, ILLINOIS 62243 COLLINSVILLE, IL 62234
 (618) 539-3178 (618) 345-8918



ILLINOIS DEPARTMENT OF TRANSPORTATION

APPROVED: 4/11/22 DATE
 x [Signature] WASHINGTON COUNTY ENGINEER

PASSED: 4/14/22 DATE
[Signature] LOCAL ROADS AND STREET ENGINEER

RELEASING FOR BID BASED ON LIMITED REVIEW: 4/14/22 DATE
[Signature] REGION ENGINEER



PRINTED BY AUTHORITY OF THE STATE OF ILLINOIS

[Signature]
 DAVID M. MARTH
 APRIL 8, 2022
 Date of Signing
 NOVEMBER 2023
 Date of License Expiration

SUMMARY OF QUANTITIES

CODE	PAY ITEM	UNIT	QUANTITY HIGHWAY 10	TOTAL QUANTITY
20200600	EXCAVATION AND GRADING EXISTING SHOUDLER	UNIT	456	456
20400800	FURNISHED EXCAVATION	CU YD	634	634
25000200	SEEDING CLASS 2	ACRE	0.5	0.5
25000400	NITROGEN FERTILIZER NUTRIENT	POUND	36	36
25000500	PHOSPHORUS FERTILIZER NUTRIENT	POUND	36	36
25000600	POTASSIUM FERTILIZER NUTRIENT	POUND	36	36
25100115	MULCH METHOD 2	ACRE	0.5	0.5
28000250	TEMPORARY EROSION CONTROL SEEDING	POUND	40	40
28000400	PERIMETER EROSION BARRIER	FOOT	1,729	1,729
40600370	LONGITUDINAL JOINT SEALANT	FOOT	23,495	23,495
40600290	BITUMINOUS MATERIALS (TACK COAT)	POUND	30,681	30,681
40604050	HOT-MIX ASPHALT SURFACE COURSE, IL-9.5, MIX "C" N50	TON	6,681	6,681
44000156	HOT-MIX ASPHALT SURFACE REMOVAL 1 3/4"	SQ YD	57,432	57,432
48102100	AGGREGATE SHOULDER WEDGE, TYPE B	TON	740	740
48203037	HOT-MIX ASPHALT SHOULDER, 10"	SQ YD	10,745	10,745
△ 63000003	STEEL PLATE BEAM GUARDRAIL, TYPE A 9 FOOT POSTS	FOOT	1,100	1,100
△ 63100167	TRAFFIC BARRIER TERMINAL, TYPE 1 (SPECIAL) TANGENT	EACH	8	8
63200310	GUARDRAIL REMOVAL	FOOT	1,316	1,316
67100100	MOBILIZATION	L SUM	1	1
70100450	TRAFFIC CONTROL AND PROTECTION STANDARD 701201	L SUM	1	1
70100460	TRAFFIC CONTROL AND PROTECTION STANDARD 701306	L SUM	1	1
70100500	TRAFFIC CONTROL AND PROTECTION STANDARD 701326	L SUM	1	1
70300100	SHORT TERM PAVEMENT MARKING	FOOT	2,350	2,350
70300150	SHORT TERM PAVEMENT MARKING REMOVAL	SQ FT	783	783
70300221	TEMPORARY PAVEMENT MARKING - LINE 4" - PAINT	FOOT	64,953	64,953
△ 72501000	TERMINAL MARKER DIRECT APPLIED	EACH	8	8
△ 78000200	THERMOPLASTIC PAVEMENT MARKING - LINE 4"	FOOT	64,952	64,952
△ 78100100	RAISED REFLECTIVE PAVEMENT MARKER	EACH	294	294
△ 78200005	GUARDRAIL REFLECTORS TYPE A	EACH	20	20
# 20076600	TRAINEES	Hour		500
78300201	PAVEMENT MARKING REMOVAL - GRINDING	SQ FT	21,651	21,651
LR443200	STRIP REFLECTIVE CRACK CONTROL TREATMENT	FOOT	45,590	45,590
# 20076604	TRAINEES TRAINING PROGRAM GRADUATE	Hour		500
20034105	MATERIAL TRANSFER DEVICE	TON	6,681	6,681

△ SPECIALTY ITEMS # 0042

GENERAL NOTES

THE THICKNESS OF THE HOT-MIX ASPHALT SHOWN ON THE PLANS IS THE NOMINAL THICKNESS. DEVIATIONS FROM THE NOMINAL THICKNESS WILL BE PERMITTED WHEN SUCH DEVIATIONS OCCUR DUE TO IRREGULARITIES IN THE EXISTING SURFACE ON WHICH THE HOT-MIX ASPHALT IS PLACED.

THE CONTRACTOR SHALL BE AWARE THAT THERE ARE MANHOLES AND VALVES LOCATED WITHIN THE RESURFACING LIMITS. CARE SHALL BE TAKEN IN THESE LOCATIONS TO ENSURE THAT THESE ITEMS ARE NOT DAMAGED DURING MILLING OR RECLAMATION OPERATIONS.

AN ESTIMATED 6700 TONS OF HOT-MIX ASPHALT MATERIAL WILL BE REMOVED FROM THIS PROJECT DURING MILLING OPERATIONS.

FACTORS USED FOR QUANTITY CALCULATIONS ARE AS FOLLOWS:
PAVING

ALL HOT-MIX ASPHALT 0.056 TONS/SQ.YD./INCH
BITUMINOUS MATERIALS (TACK COAT) 0.05 POUNDS/SQ.FT.
BITUMINOUS MATERIALS (FOG COAT) 0.025 POUNDS/SQ.FT.
BITUMINOUS MATERIALS (PRIME COAT) 0.25 POUNDS/SQ.FT.

THE FOLLOWING HMA MIXTURE REQUIREMENTS ARE APPLICABLE FOR THIS PROJECT:

LOCATION(S):	STA. 177+38.51 - STA. 412+33.28	STA. 177+38.51 - STA. 405+33.43
MIXTURE USE(S):	SURFACE	SHOULDER
PG:	PG 64-22	PG 64-22
DESIGN AIR VOIDS:	4% @ N50	4% @ N50
MIXTURE COMPOSITION: (MIXTURE GRADATION)	IL 9.5	IL 19.0
FRICTION AGGREGATE:	MIX "C"	N/A
MIXTURE WEIGHT:	112 LB/SQ YD-INCH	112 LB/SQ YD-INCH
QUALITY MANAGEMENT PROGRAM:	QCP	QC/QA
MATERIAL TRANSFER DEVICE REQUIRED	YES	NO

1/ WHEN A NUMBER OF ROLLER PASSES IS SPECIFIED THE CONTRACTOR MAY OPT OUT TO USE INTELLIGENT COMPACTION IN LIEU OF DENSITY TESTING UNDER THE QUALITY CONTROL FOR PERFORMANCE (QCP) PROGRAM.

LONGITUDINAL JOINT SEALANT SHALL BE PLACED UNDER THE SURFACE LIFT HMA ALONG THE LONGITUDINAL CENTERLINE JOINT THROUGHOUT THE PROJECT LIMITS.

ALL DISTURBED EARTHWORK AREAS SHALL BE SEEDED IMMEDIATELY UPON COMPLETION OF EARTHWORK ACTIVITIES AT EACH LOCATION WITH TEMPORARY EROSION CONTROL SEEDING.

ALL EARTHWORK AREAS SHALL HAVE PERIMETER EROSION CONTROL BARRIER INSTALLED IMMEDIATELY UPON COMPLETING AT EACH LOCATION AS SHOWN IN THE PLANS.

HMA SURFACE COURSE OVERLAY SHALL BE PLACED OVER HOT-MIX ASPHALT SHOULDERS 10" CONCURRENTLY WITH THE MAINLINE OVERLAY AT THE CROSS SLOPES SHOWN IN THE PLANS.

KNOWN UTILITIES WITHIN PROJECT LIMITS:

NATURAL GAS & ELECTRIC AMEREN ILLINOIS
TELEPHONE & CABLE TV EGYPTIAN TELEPHONE
NATURAL GAS SUNCO ENERGY TRANSFER
WATER WASHINGTON COUNTY WATER
ELECTRIC TRI-COUNTY ELECTRIC

F.A.S ROUTE	SECTION	COUNTY	TOTAL SHEETS	SHEET NUMBER
836	18-00094-00-RS	WASHINGTON	25	2
FEDERAL AID PROJECT		CONTRACT 97772		

APPLICABLE IDOT
HIGHWAY STANDARDS

280001-07	701306-04
482001-02	701311-03
630001-12	701326-04
630301-09	701901-08
701001-02	725001-01
701006-05	780001-05
701011-04	782006-01
701201-05	
701301-04	

COMMITMENTS

NONE

F.A.S ROUTE	SECTION	COUNTY	TOTAL SHEETS	SHEET NUMBER
836	18-00094-00-RS	WASHINGTON	25	3
FEDERAL AID PROJECT			CONTRACT 97772	

PAVEMENT MARKING SCHEDULE

ITEM	SHORT TERM PVMT. MARKING	SHORT TERM PVMT. MARKING REMOVAL	TEMP PVMT. MARKING	PVMT. MARKING REMOVAL	THERMOPLASTIC PVMT. MK LINE 4"			
	FOOT	SQ FT	FOOT	SQ FT	FOOT			
DESCRIPTION	YELLOW				WHITE (EDGE LANE LINE)	YELLOW (DOUBLE CENTER LINE)	YELLOW (SINGLE CENTER LINE)	YELLOW (SKIP DASH LINE)
RT. STA. 177+38 TO 412+35	2,350	783	23,497	21,651	23,497			
LT. STA. 177+38 TO 412+35			23,497		23,497			
STA. 177+38 TO 298+34			3,024					3,024
RT. STA. 287+43 TO 298+34			1,091				1,091	
STA. 298+34 TO 302+51			834			834		
RT. STA. 302+51 TO 312+33			245					245
LT. STA. 302+51 TO 312+33			982				982	
STA. 312+33 TO 313+57			248			248		
RT. STA. 313+57 TO 323+41			984				984	
LT. STA. 313+57 TO 323+41			246					246
LT. STA. 323+41 TO 331+76			835				835	
RT. STA. 323+41 TO 331+91			213					213
LT. STA. 331+91 TO 342+88			274					274
RT. STA. 331+91 TO 342+88			1,097				1,097	
STA. 342+88 TO 359+45			3,314			3,314		
RT. STA. 359+45 TO 371+00			289					289
LT. STA. 359+45 TO 371+00			1,155				1,155	
STA. 371+00 TO 380+27			232					232
RT. STA. 380+27 TO 390+88			1,061				1,061	
LT. STA. 380+27 TO 390+88			265					265
STA. 390+88 TO 393+93			610			610		
LT. STA. 393+93 TO 398+93			500				500	
STA. 393+93 TO 412+35			461					461
TOTAL	2,350	783	64,953	21,651	46,994	5,006	7,705	5,248

PAVEMENT SCHEDULE

LOCATION	HMA SURFACE REM. 1 3/4"	STRIP REFLECTIVE CC TREATMENT	BITUMINOUS MATERIALS (TACK COAT)	HMA SURFACE COURSE MIX C N50	HMA SHOULDER 10"	AGG WEDGE SHOULDER TYPE B	LONGITUDINAL JOINT SEALANT	MATERIAL TRANSFER DEVICE
	SQ YD	FOOT	POUND	TON	SQ YD	TON	FOOT	TON
STA - STA								
177+38.00 TO 412+35.00	57,432	45,590	30,681	6,681	10,745	740	23,495	6,681
TOTAL	57,432	45,590	30,681	6,681	10,745	740	23,495	6,681

GUARDRAIL SCHEDULE

LOCATION	GUARDRAIL REMOVAL	SPBGR TYPE A 9' POSTS	TRAFFIC BARRIER TERMINAL, TYPE 1 (SPECIAL) TANGENT
	FOOT	FOOT	25 FOOT
STA - STA			
369+50.00 TO 371+75.89 LT & RT	451.78		
400+94.45 TO 404+05.96 RT	311.51		
400+94.45 TO 405+33.43 LT	438.98		
404+31.21 TO 405+44.75 RT	113.54		
369+75.00 TO 371+50.00 LT		175	
369+75.00 TO 371+50.00 RT		175	
401+05.00 TO 404+80.00 RT		375	
401+20.00 TO 404+95.00 LT		375	
369+50.00 TO 369+75.00 RT			1
369+50.00 TO 369+75.00 LT			1
371+50.00 TO 371+75.00 RT			1
371+50.00 TO 371+75.00 LT			1
400+80.00 TO 401+05.00 RT			1
400+95.00 TO 401+20.00 LT			1
404+80.00 TO 405+05.00 RT			1
404+95.00 TO 405+20.00 LT			1
TOTAL	1,315.81	1,100	8 (200')

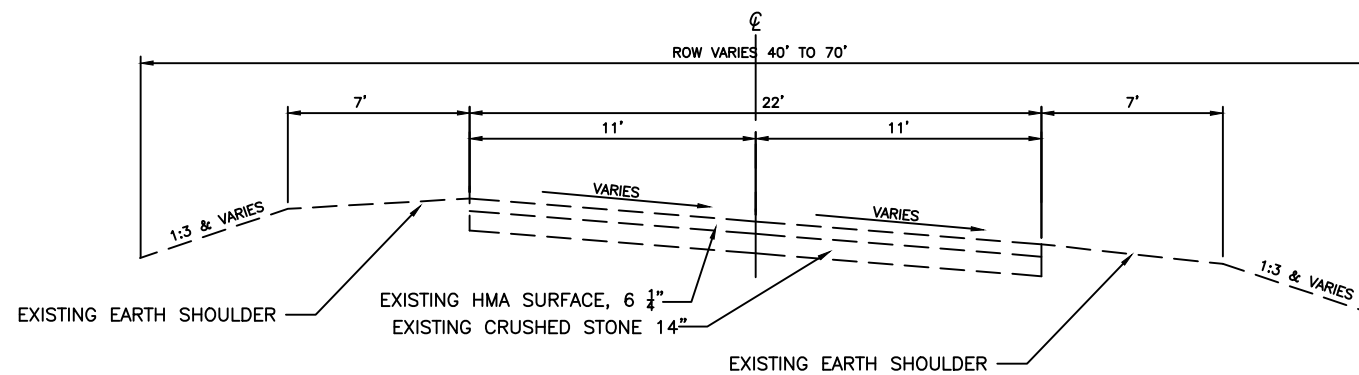
SEEDING SCHEDULE

LOCATION	SEEDING CLASS 2	NITROGEN FERTILIZER NUTRIENT	PHOSPHORUS FERTILIZER NUTRIENT	POTASSIUM FERTILIZER NUTRIENT	MULCH METHOD 2
	ACRE	POUND	POUND	POUND	TON
STA - STA					
369+00 TO 372+00 RT	0.1	9	9	9	0.1
369+00 TO 372+00 LT	0.1	9	9	9	0.1
400+00 TO 405+50 RT	0.1	9	9	9	0.1
400+00 TO 405+50 LT	0.1	9	9	9	0.1
TOTAL	0.5	36	36	36	0.5

EARTHWORK SCHEDULE

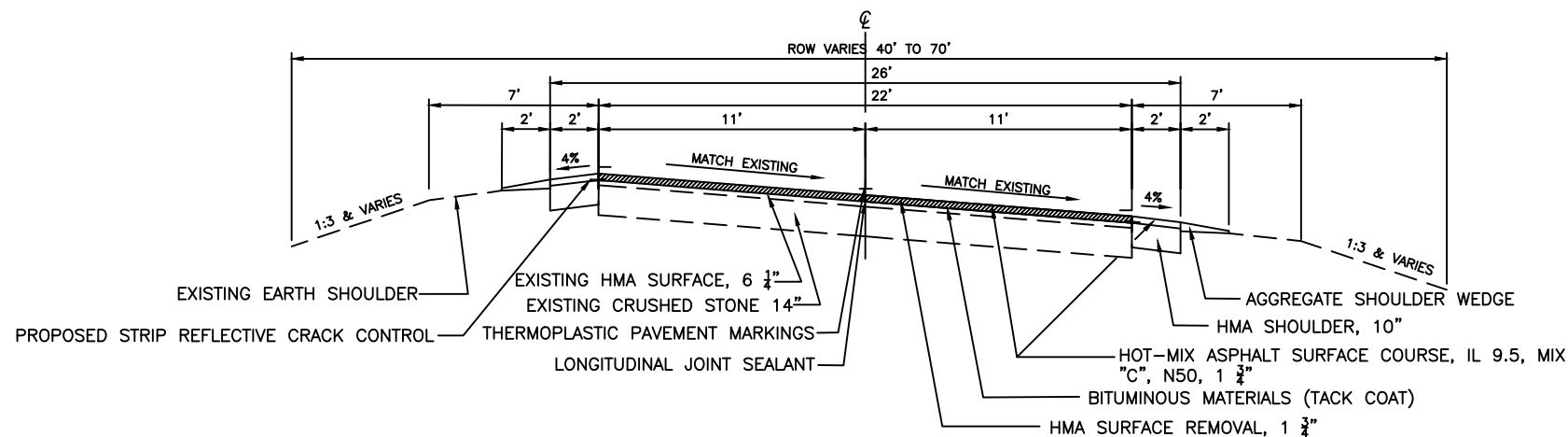
LOCATION	EARTH EXCAVATION	EMBANKMENT	FURNISHED EXCAVATION
	S.F.	C.Y.	C.Y.
STA - STA			
368+50 TO 372+50 RT & LT	0	232	232
399+50 TO 406+00 RT & LT	0	402	402
TOTAL	0	634	634

F.A.S ROUTE	SECTION	COUNTY	TOTAL SHEETS	SHEET NUMBER
836	18-00094-00-RS	WASHINGTON	25	4
FEDERAL AID PROJECT		CONTRACT 97772		



EXISTING TYPICAL SUPERELEVATED SECTION

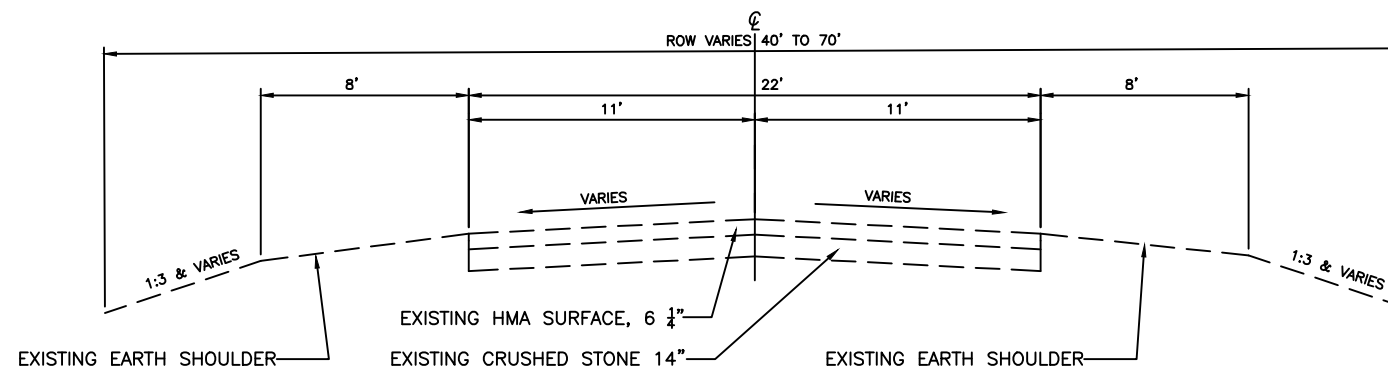
STA. 177+38.51 TO 198+98.31
 STA. 253+31.15 TO 273+86.24
 STA. 336+89.45 TO 347+25.86
 STA. 349+79.84 TO 358+99.85
 STA. 361+50.09 TO 368+52.18
 STA. 368+99.17 TO 369+50.00
 STA. 371+75.89 TO 375+79.37
 STA. 385+48.73 TO 390+46.70
 SCALE: NTS



PROPOSED TYPICAL SUPERELEVATED SECTION

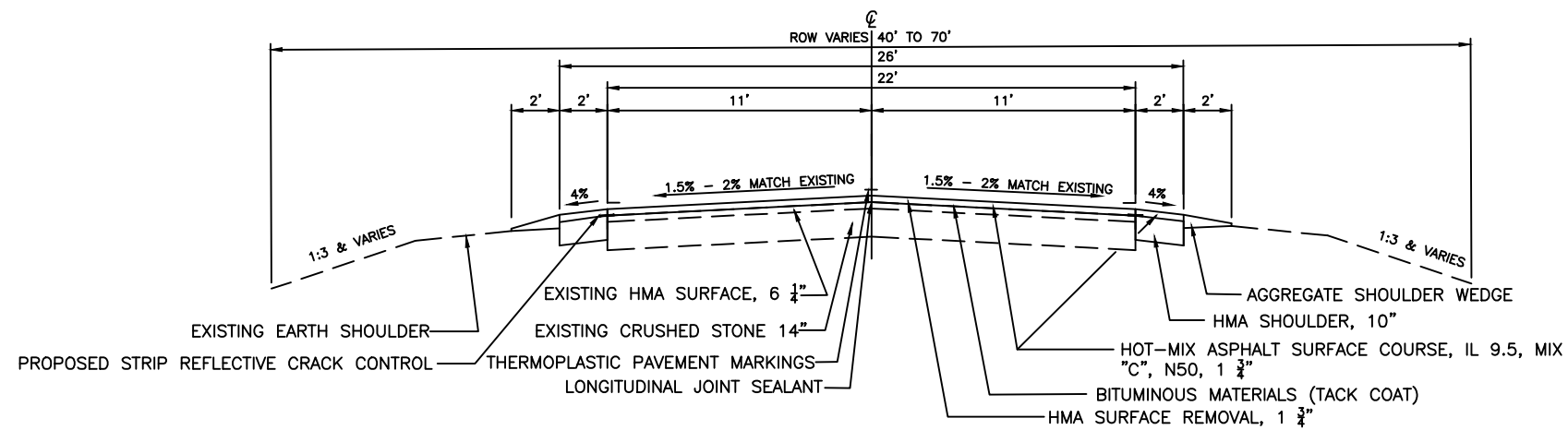
STA. 177+38.51 TO 198+98.31
 STA. 253+31.15 TO 273+86.24
 STA. 336+89.45 TO 347+25.86
 STA. 349+79.84 TO 358+99.85
 STA. 361+50.09 TO 368+52.18
 STA. 368+99.17 TO 369+50.00
 STA. 371+75.89 TO 375+79.37
 STA. 385+48.73 TO 390+46.70
 SCALE: NTS

F.A.S ROUTE	SECTION	COUNTY	TOTAL SHEETS	SHEET NUMBER
836	18-00094-00-RS	WASHINGTON	25	5
FEDERAL AID PROJECT		CONTRACT 97772		



EXISTING TYPICAL TANGENT SECTION

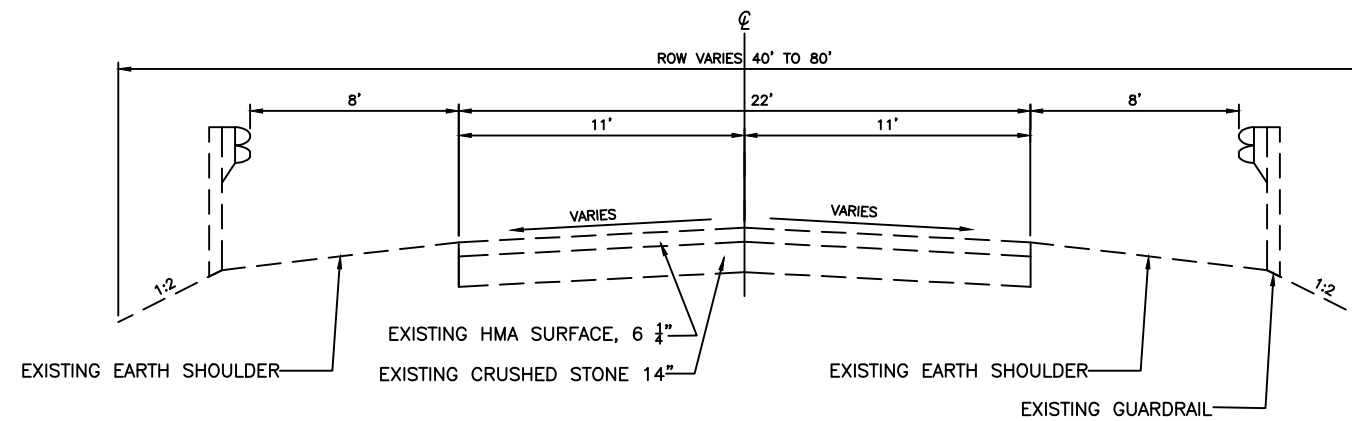
STA. 198+98.31 TO 253+31.15
 STA. 273+86.24 TO 336+89.45
 STA. 347+25.86 TO 349+79.84
 STA. 358+99.85 TO 361+50.09
 STA. 368+52.18 TO 368+99.17
 STA. 375+79.37 TO 385+48.73
 SCALE: NTS



PROPOSED TYPICAL TANGENT SECTION

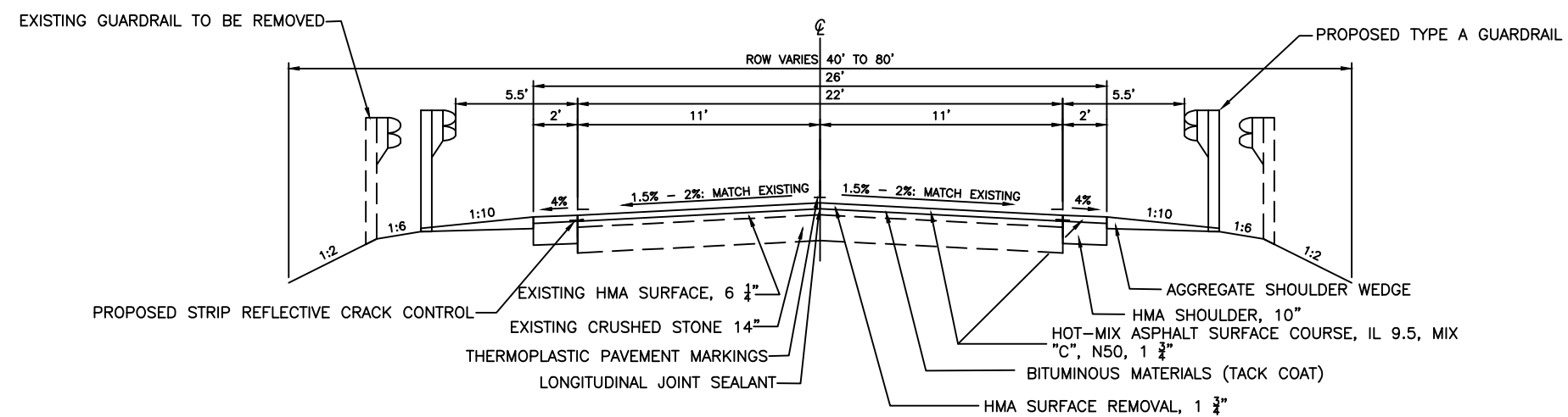
STA. 198+98.31 TO 253+31.15
 STA. 273+86.24 TO 336+89.45
 STA. 347+25.86 TO 349+79.84
 STA. 358+99.85 TO 361+50.09
 STA. 368+52.18 TO 368+99.17
 STA. 375+79.37 TO 385+48.73
 SCALE: NTS

F.A.S ROUTE	SECTION	COUNTY	TOTAL SHEETS	SHEET NUMBER
836	18-00094-00-RS	WASHINGTON	25	6
FEDERAL AID PROJECT		CONTRACT 97772		



EXISTING TYPICAL GUARDRAIL SECTION

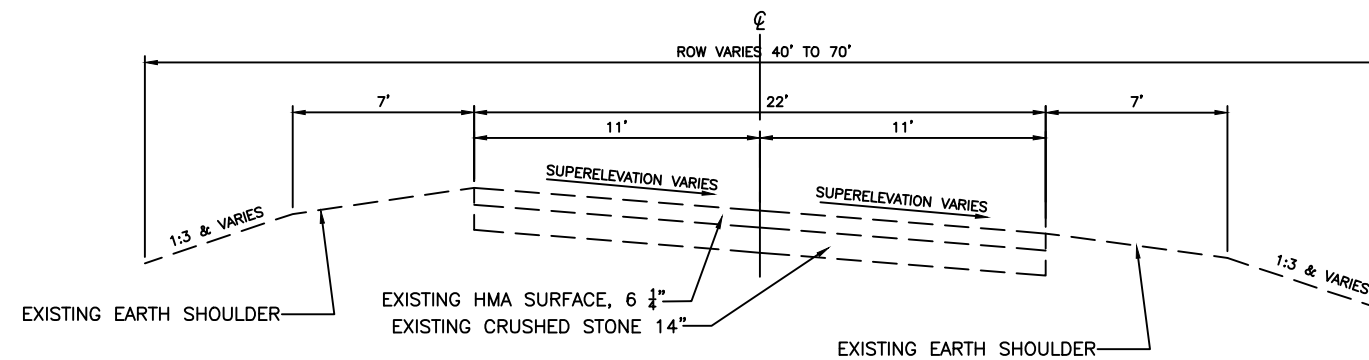
STA. 369+50.00 TO 371+75.89
SCALE: NTS



PROPOSED TYPICAL GUARDRAIL SECTION

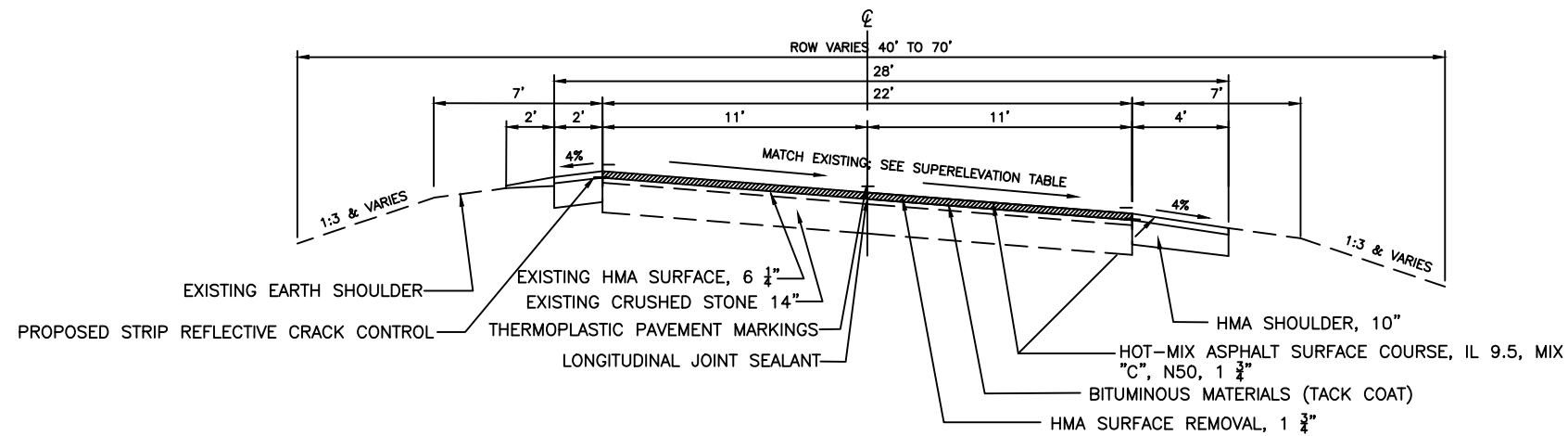
STA. 369+50.00 TO 371+75.89
SCALE: NTS

F.A.S ROUTE	SECTION	COUNTY	TOTAL SHEETS	SHEET NUMBER
836	18-00094-00-RS	WASHINGTON	25	7
FEDERAL AID PROJECT		CONTRACT 97772		



EXISTING TYPICAL SUPERELEVATED SECTION

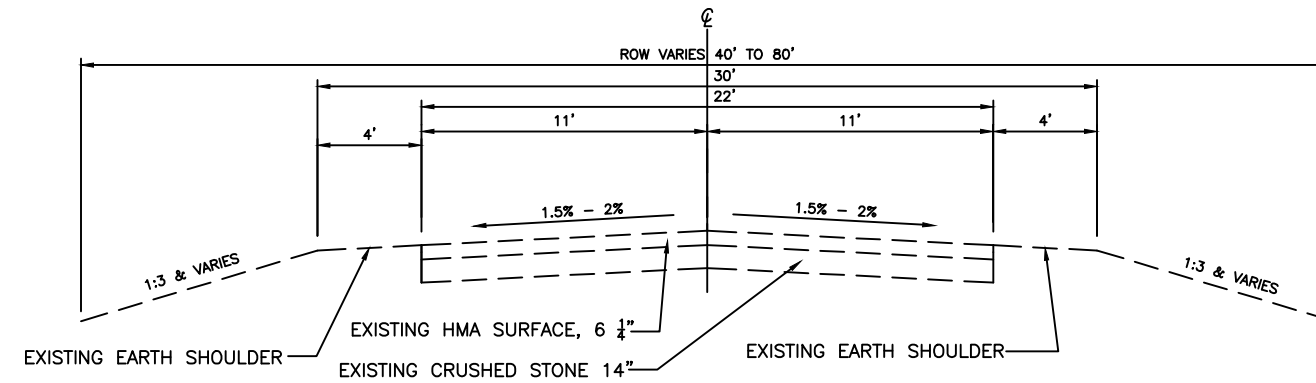
STA. 390+46.70 TO 392+57.00
SCALE: NTS



PROPOSED TYPICAL SUPERELEVATED SECTION

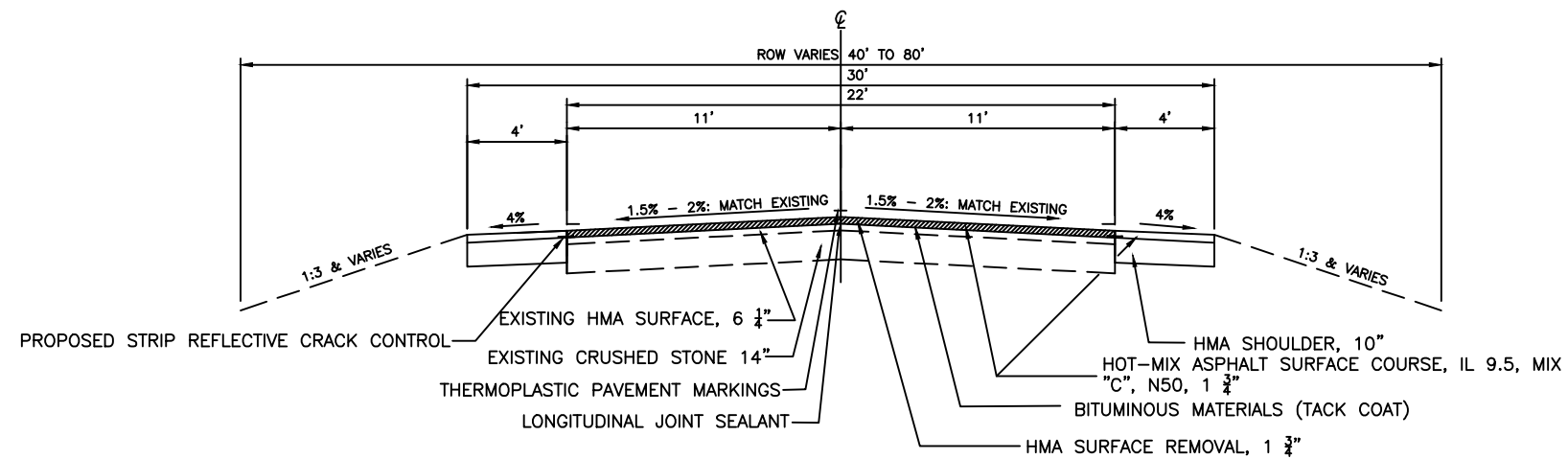
STA. 390+46.70 TO 392+57.00
SCALE: NTS

F.A.S ROUTE	SECTION	COUNTY	TOTAL SHEETS	SHEET NUMBER
836	18-00094-00-RS	WASHINGTON	25	8
FEDERAL AID PROJECT		CONTRACT 97772		



EXISTING TYPICAL TANGENT SECTION

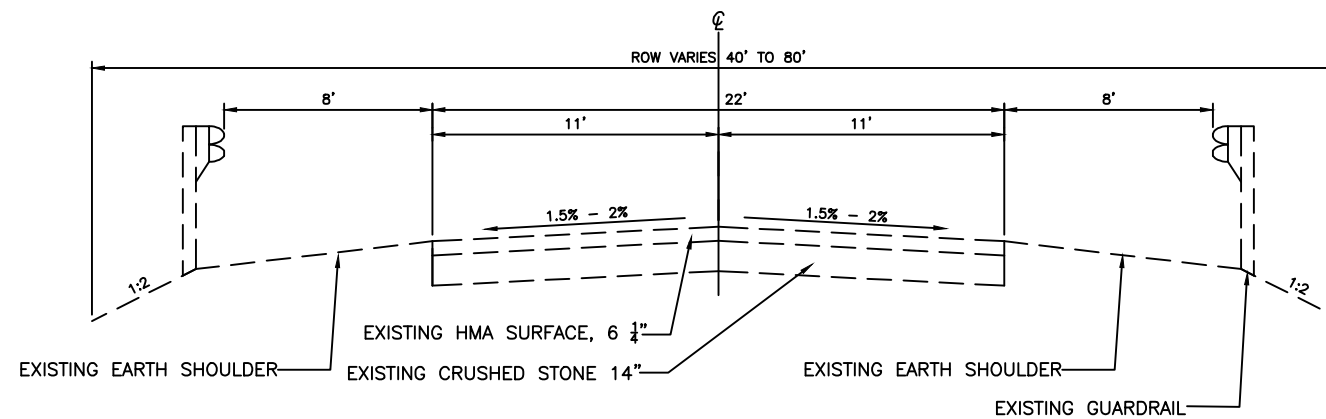
STA. 392+57.00 TO 400+75.00
SCALE: NTS



PROPOSED TYPICAL TANGENT SECTION

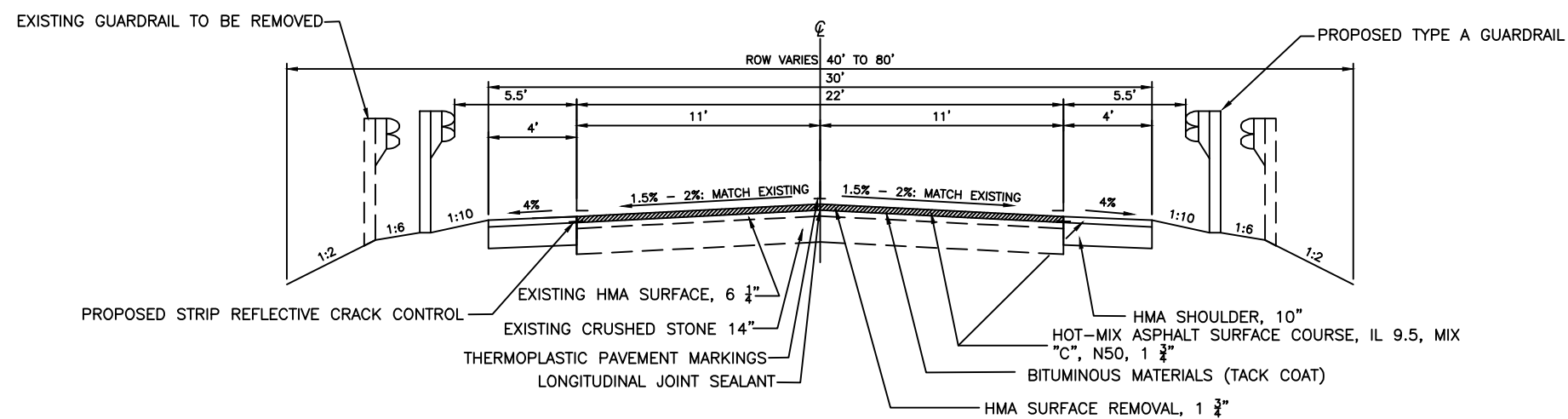
STA. 392+57.00 TO 400+75.00
SCALE: NTS

F.A.S ROUTE	SECTION	COUNTY	TOTAL SHEETS	SHEET NUMBER
836	18-00094-00-RS	WASHINGTON	25	9
FEDERAL AID PROJECT		CONTRACT 97772		



EXISTING TYPICAL GUARDRAIL SECTION

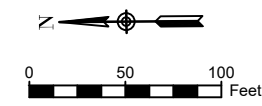
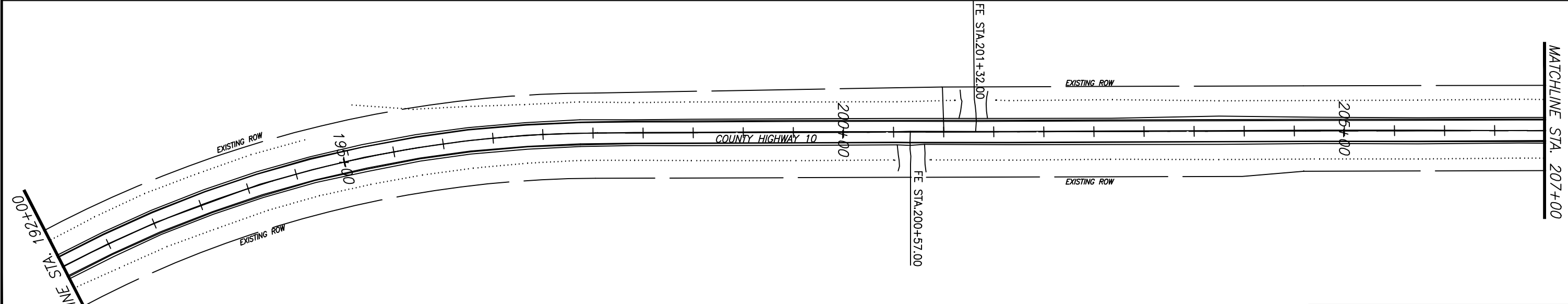
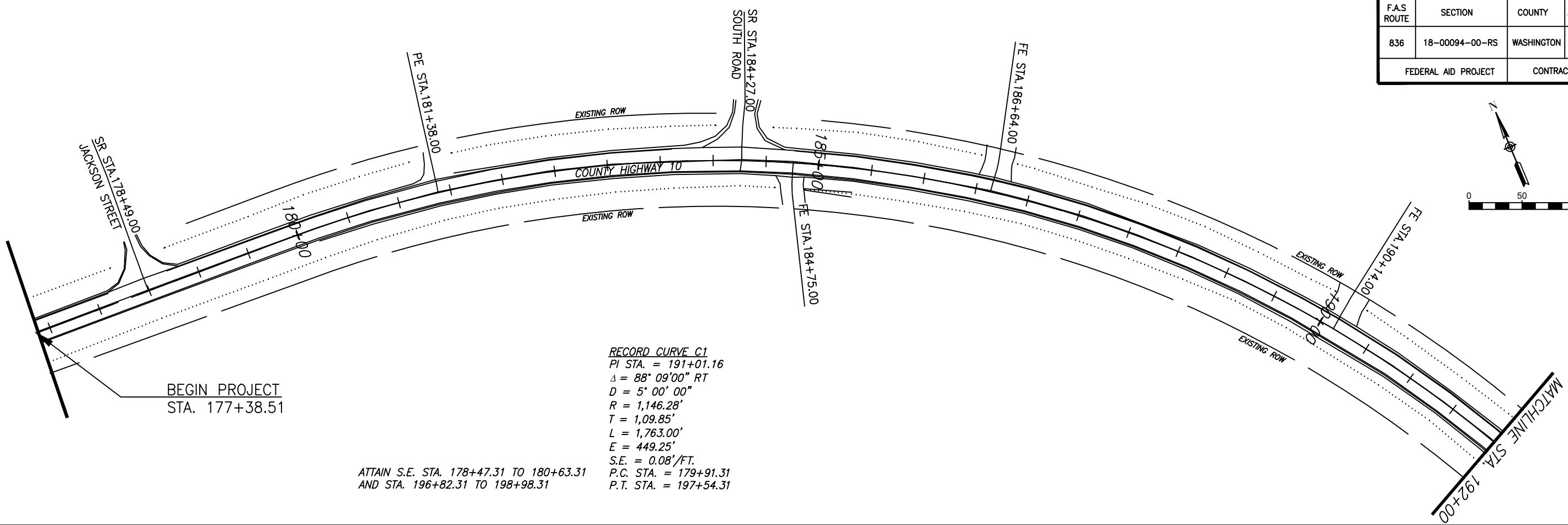
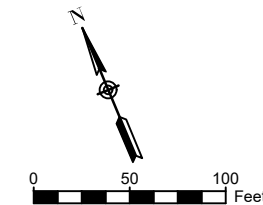
STA. 400+75.00 TO 405+33.43
SCALE: NTS



PROPOSED TYPICAL GUARDRAIL SECTION

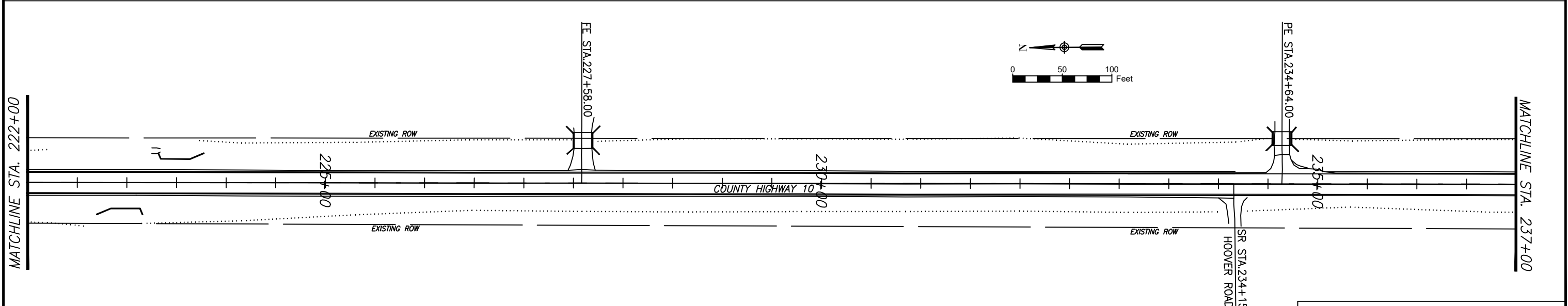
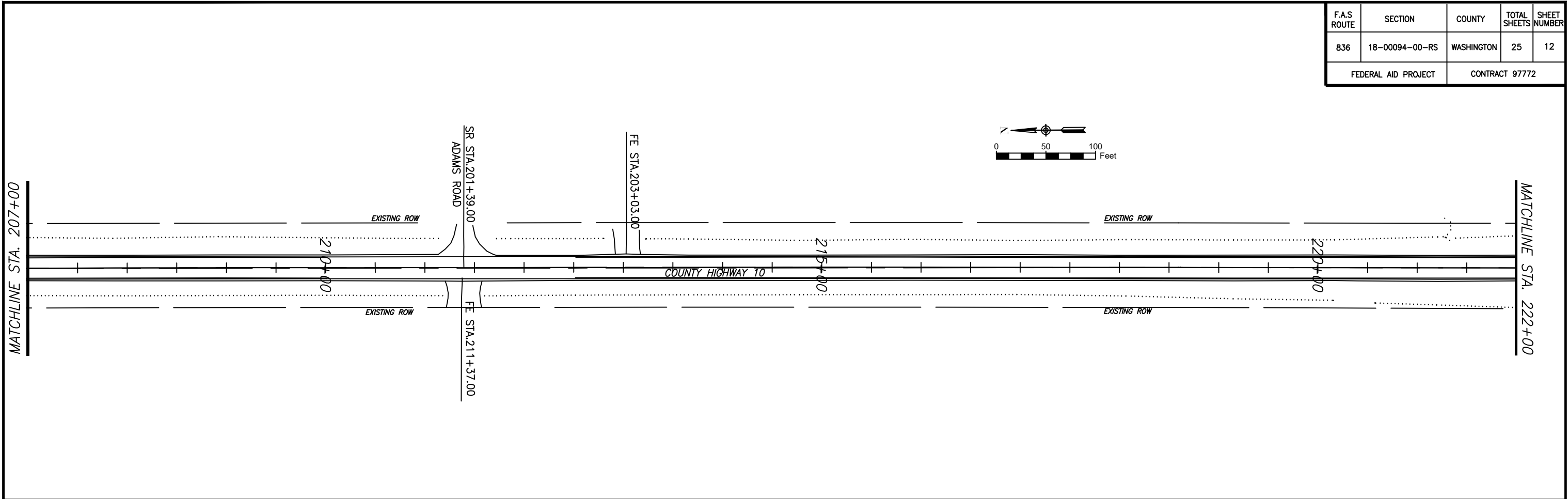
STA. 400+75.00 TO 405+33.43
SCALE: NTS

F.A.S ROUTE	SECTION	COUNTY	TOTAL SHEETS	SHEET NUMBER
836	18-0094-00-RS	WASHINGTON	25	11
FEDERAL AID PROJECT		CONTRACT 97772		



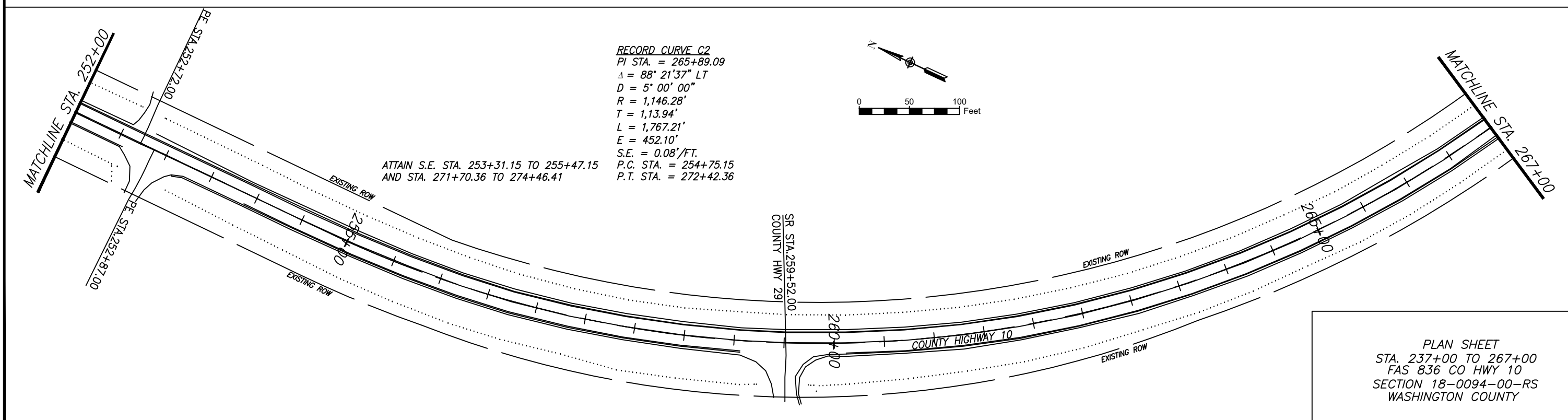
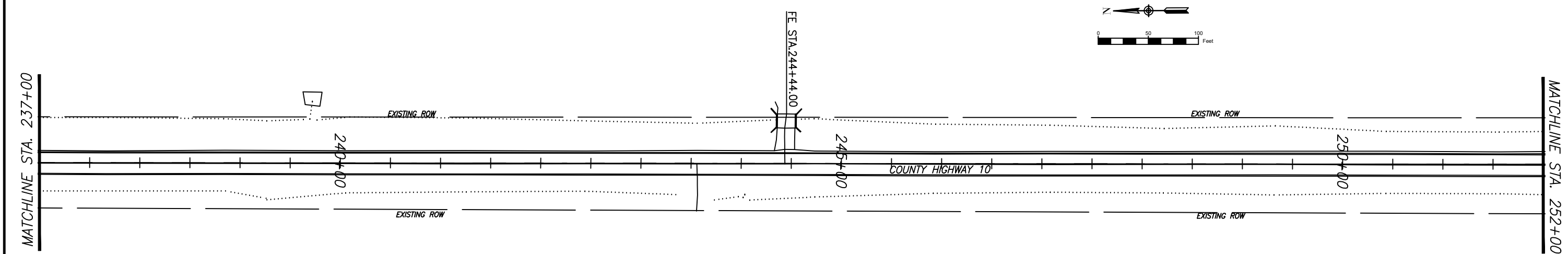
PLAN SHEET
 STA. 177+38.51 TO 207+00
 FAS 836 CO HWY 10
 SECTION 18-0094-00-RS
 WASHINGTON COUNTY

F.A.S ROUTE	SECTION	COUNTY	TOTAL SHEETS	SHEET NUMBER
836	18-0094-00-RS	WASHINGTON	25	12
FEDERAL AID PROJECT		CONTRACT 97772		



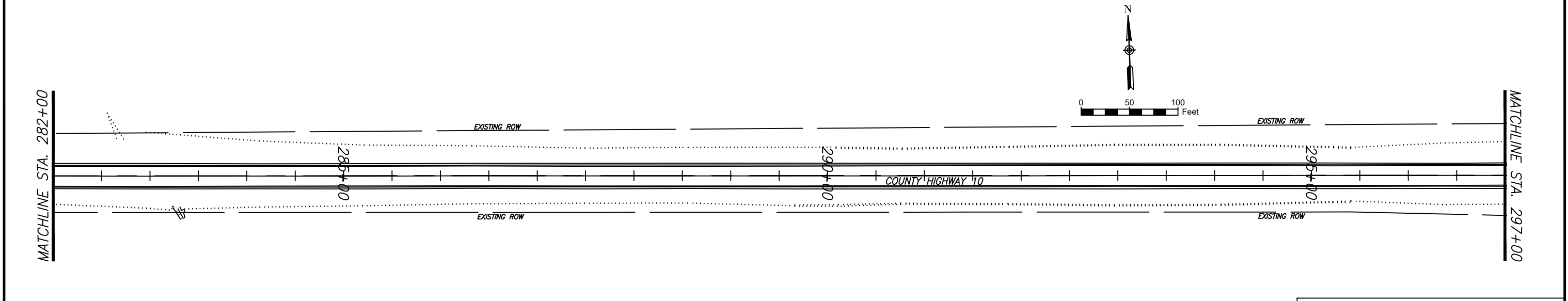
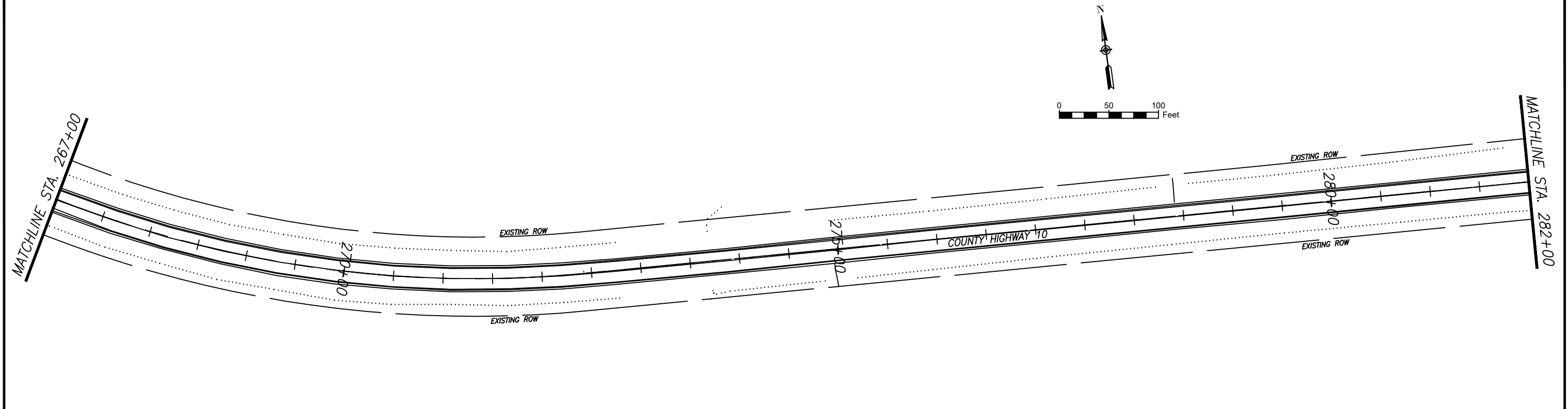
PLAN SHEET
 STA. 207+00 TO 237+00
 FAS 836 CO HWY 10
 SECTION 18-0094-00-RS
 WASHINGTON COUNTY

F.A.S ROUTE	SECTION	COUNTY	TOTAL SHEETS	SHEET NUMBER
836	18-00094-00-RS	WASHINGTON	25	13
FEDERAL AID PROJECT		CONTRACT 97772		



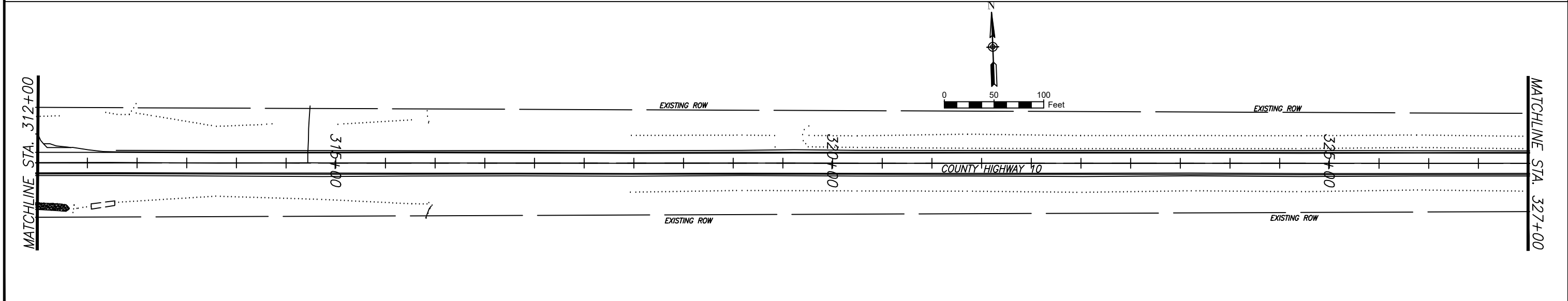
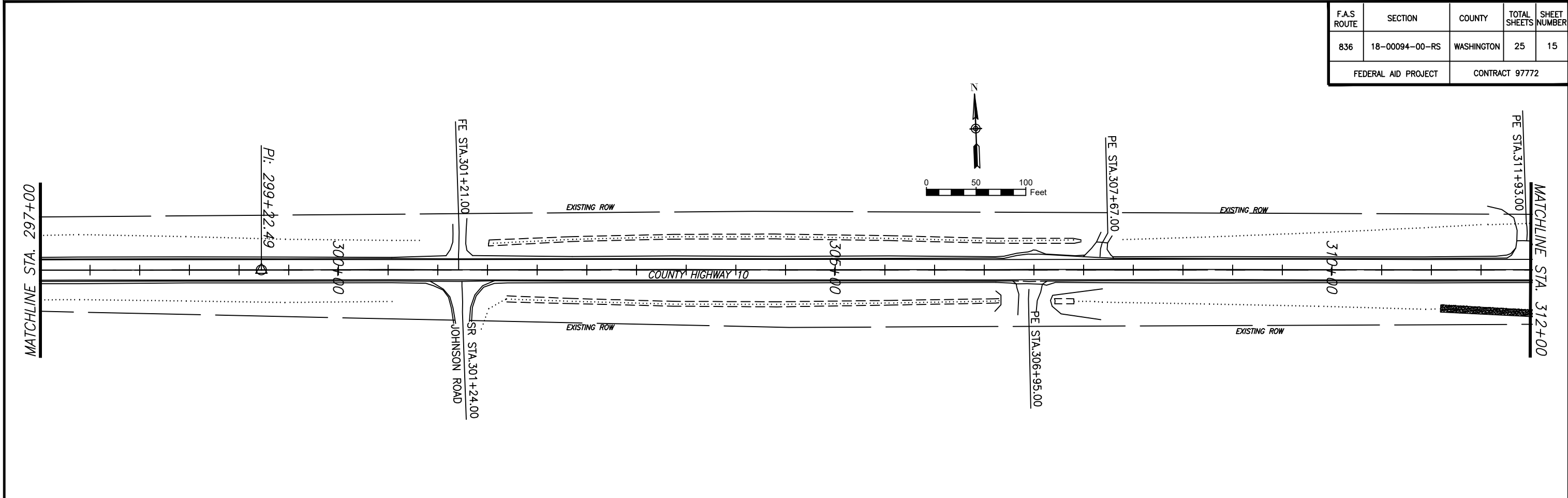
PLAN SHEET
 STA. 237+00 TO 267+00
 FAS 836 CO HWY 10
 SECTION 18-0094-00-RS
 WASHINGTON COUNTY

F.A.S ROUTE	SECTION	COUNTY	TOTAL SHEETS	SHEET NUMBER
836	18-00094-00-RS	WASHINGTON	25	14
FEDERAL AID PROJECT		CONTRACT 97772		



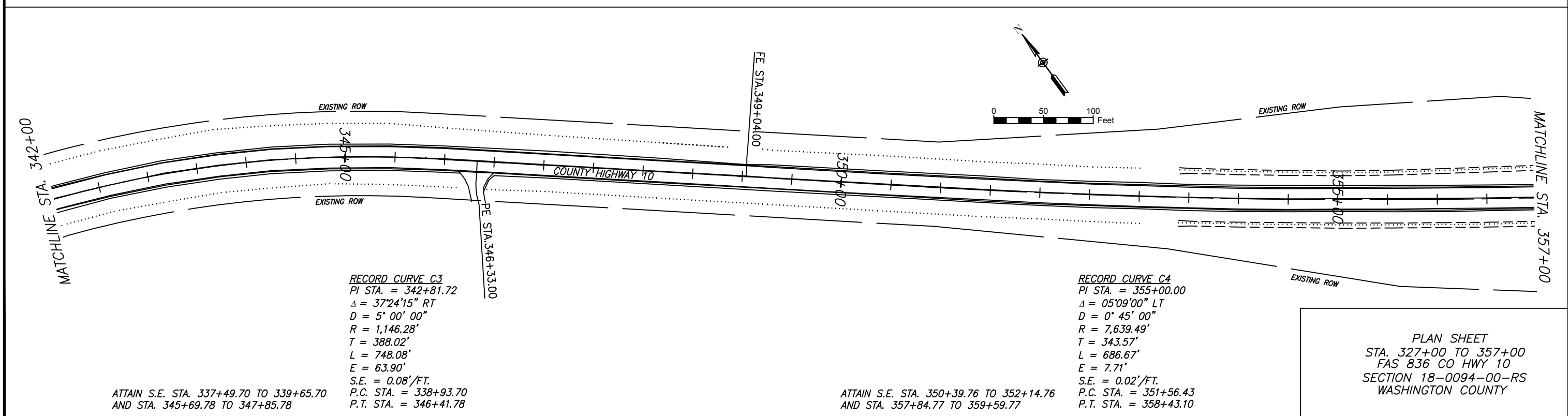
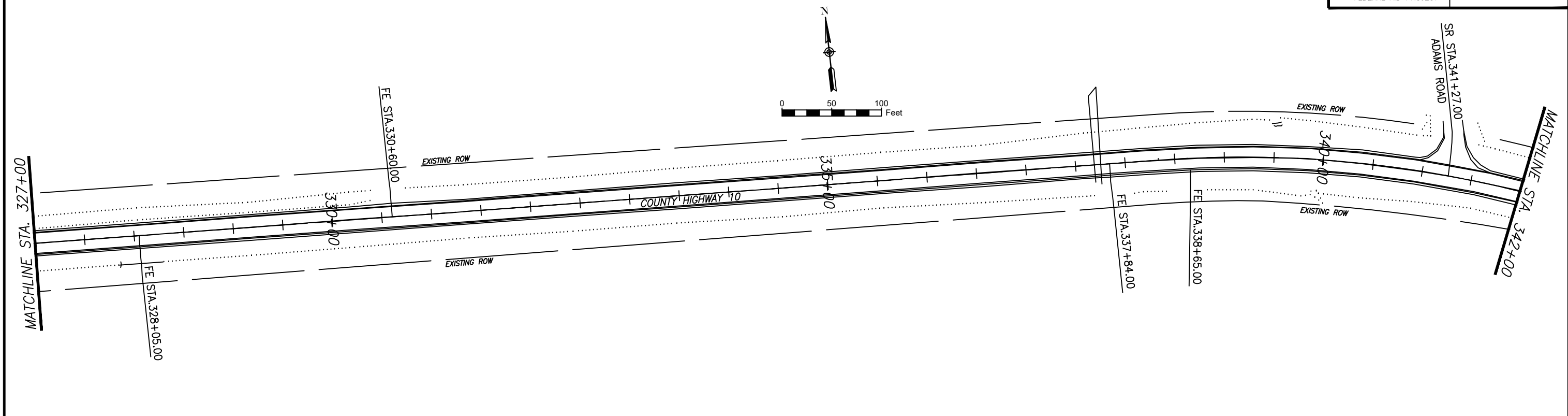
PLAN SHEET
 STA. 267+00 TO 297+00
 FAS 836 CO HWY 10
 SECTION 18-0094-00-RS
 WASHINGTON COUNTY

F.A.S ROUTE	SECTION	COUNTY	TOTAL SHEETS	SHEET NUMBER
836	18-00094-00-RS	WASHINGTON	25	15
FEDERAL AID PROJECT		CONTRACT 97772		



PLAN SHEET
 STA. 297+00 TO 327+00
 FAS 836 CO HWY 10
 SECTION 18-0094-00-RS
 WASHINGTON COUNTY

F.A.S ROUTE	SECTION	COUNTY	TOTAL SHEETS	SHEET NUMBER
836	18-00094-00-RS	WASHINGTON	25	16
FEDERAL AID PROJECT		CONTRACT 97772		



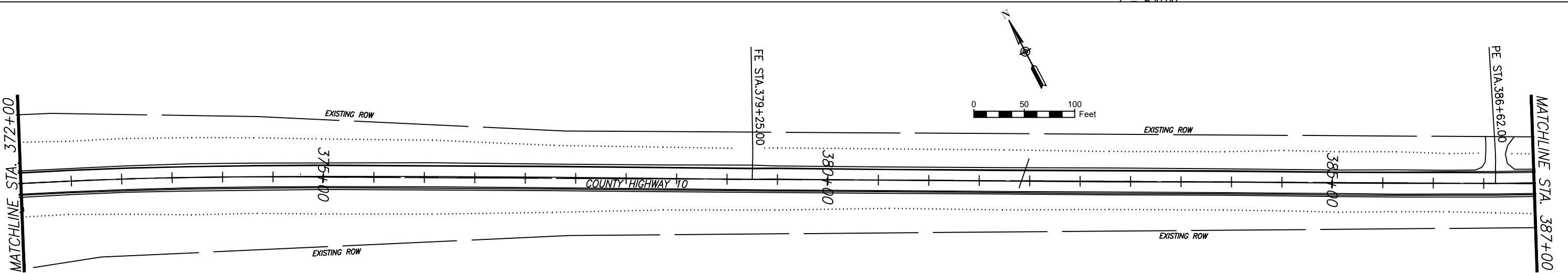
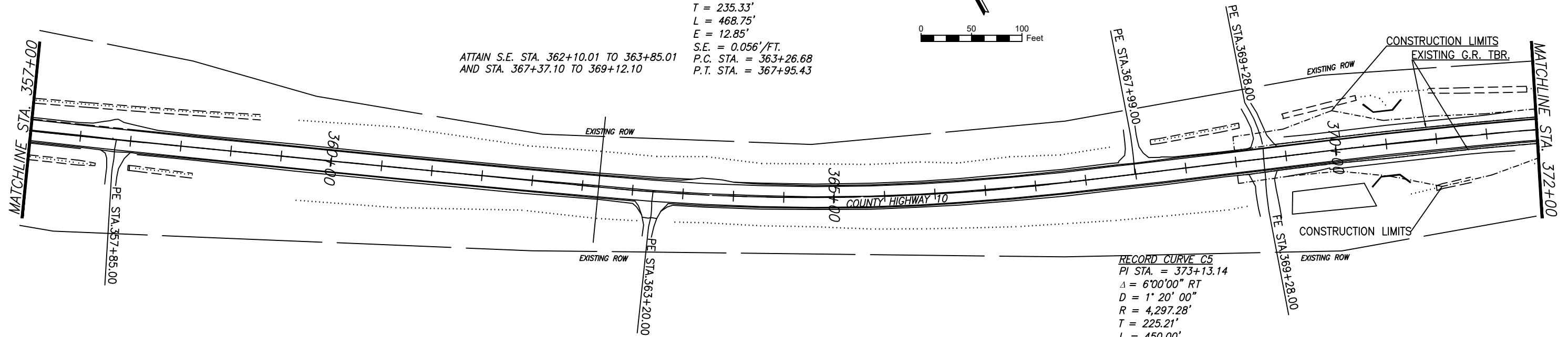
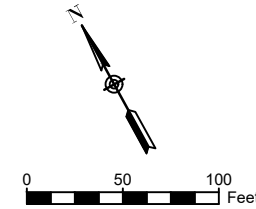
PLAN SHEET

OAKDALE ELKTION RESURFACING IMPROVEMENTS
 WASHINGTON COUNTY, ILLINOIS

F.A.S ROUTE	SECTION	COUNTY	TOTAL SHEETS	SHEET NUMBER
836	18-0094-00-RS	WASHINGTON	25	17
FEDERAL AID PROJECT		CONTRACT 97772		

RECORD CURVE C5
 PI STA. = 365+62.01
 $\Delta = 12^{\circ}30'00''$ LT
 $D = 2^{\circ}40'00''$
 $R = 2,148.79'$
 $T = 235.33'$
 $L = 468.75'$
 $E = 12.85'$
 $S.E. = 0.056'/FT.$
 P.C. STA. = 363+26.68
 P.T. STA. = 367+95.43

ATTAIN S.E. STA. 362+10.01 TO 363+85.01
 AND STA. 367+37.10 TO 369+12.10

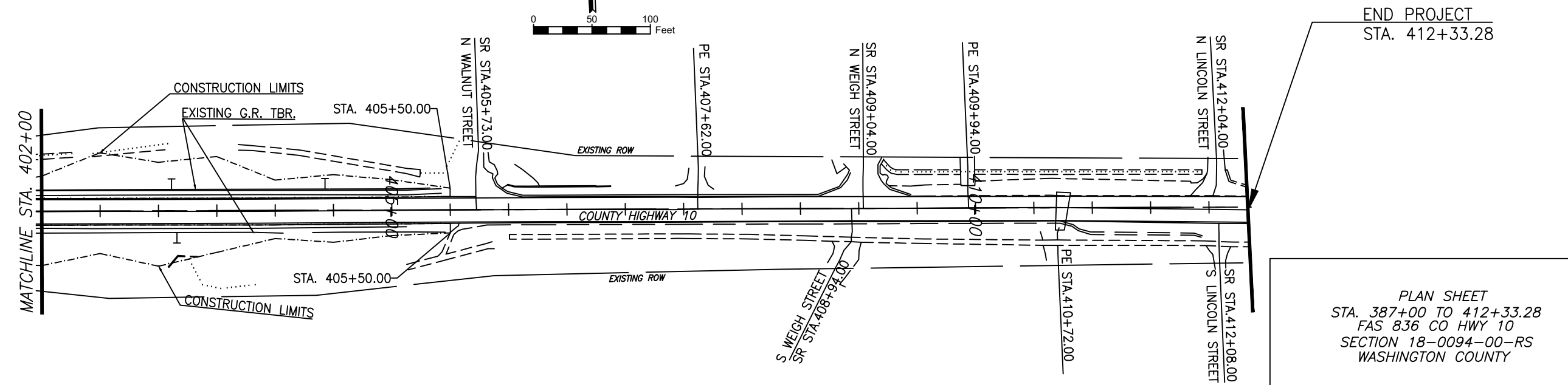
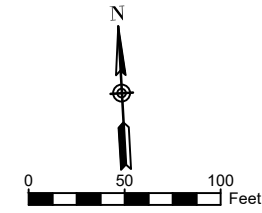
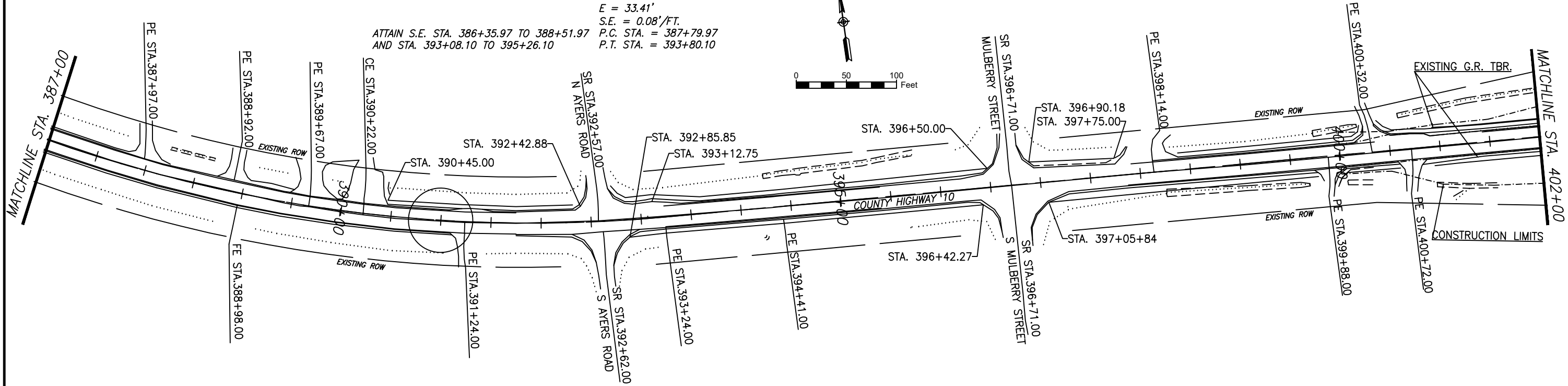
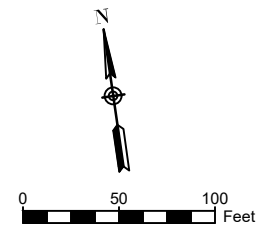


PLAN SHEET
 STA. 357+00 TO 387+00
 FAS 836 CO HWY 10
 SECTION 18-0094-00-RS
 WASHINGTON COUNTY

F.A.S ROUTE	SECTION	COUNTY	TOTAL SHEETS	SHEET NUMBER
836	18-00094-00-RS	WASHINGTON	25	18
FEDERAL AID PROJECT		CONTRACT 97772		

RECORD CURVE C5
 PI STA. = 390+84.96
 $\Delta = 25^{\circ}00'10''$ RT
 $D = 4' 10' 00''$
 $R = 1,375.40'$
 $T = 304.99'$
 $L = 600.13'$
 $E = 33.41'$
 $S.E. = 0.08'/FT.$
 P.C. STA. = 387+79.97
 P.T. STA. = 393+80.10

ATTAIN S.E. STA. 386+35.97 TO 388+51.97
 AND STA. 393+08.10 TO 395+26.10



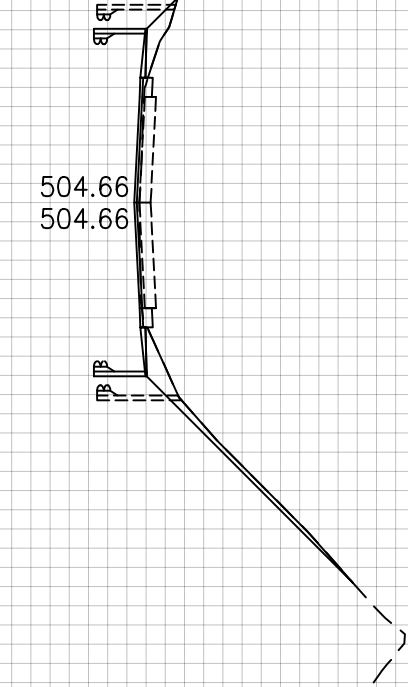
PLAN SHEET
 STA. 387+00 TO 412+33.28
 FAS 836 CO HWY 10
 SECTION 18-0094-00-RS
 WASHINGTON COUNTY

F.A.S. ROUTE	SECTION	COUNTY	TOTAL SHEETS	SHEET NUMBER
836	18-00094-00-RS	WASHINGTON	25	19
FEDERAL AID PROJECT		CONTRACT 97772		

510
505
500
495
490
485

EXISTING R.O.W.

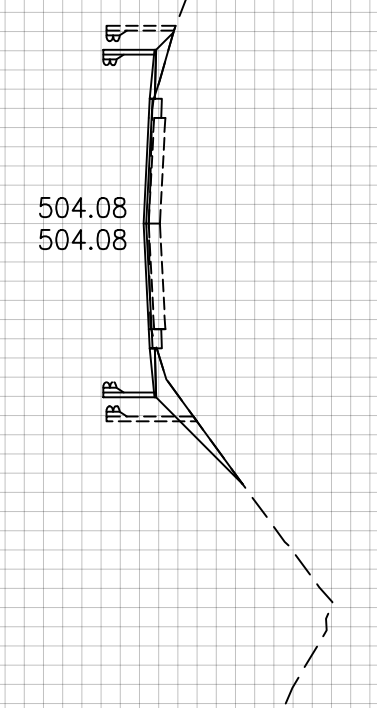
F = 20.56 S.F.
EMB = 33.32 C.Y.



510
505
500
495
490
485

EXISTING R.O.W.

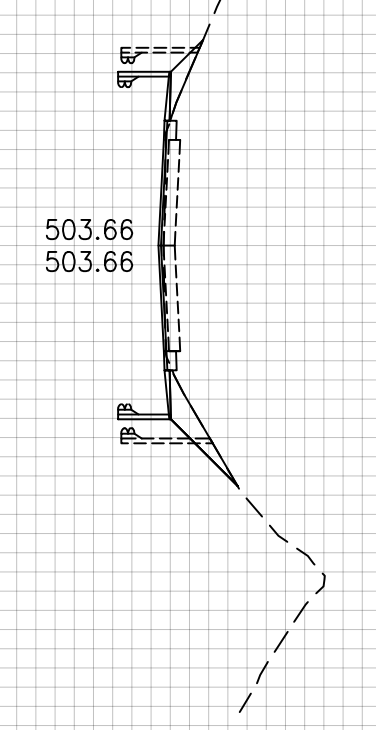
F = 15.43 S.F.
EMB = 26.31 C.Y.



510
505
500
495
490
485

EXISTING R.O.W.

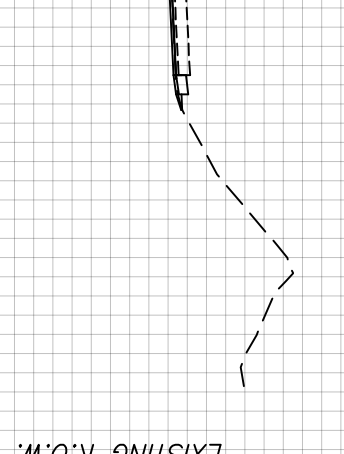
F = 12.98 S.F.
EMB = 12.02 C.Y.



510
505
500
495
490
485

EXISTING R.O.W.

503.40
503.40



510
505
500
495
490
485

EXISTING R.O.W.

510
505
500
495
490
485

EXISTING R.O.W.

510
505
500
495
490
485

EXISTING R.O.W.

510
505
500
495
490
485

EXISTING R.O.W.

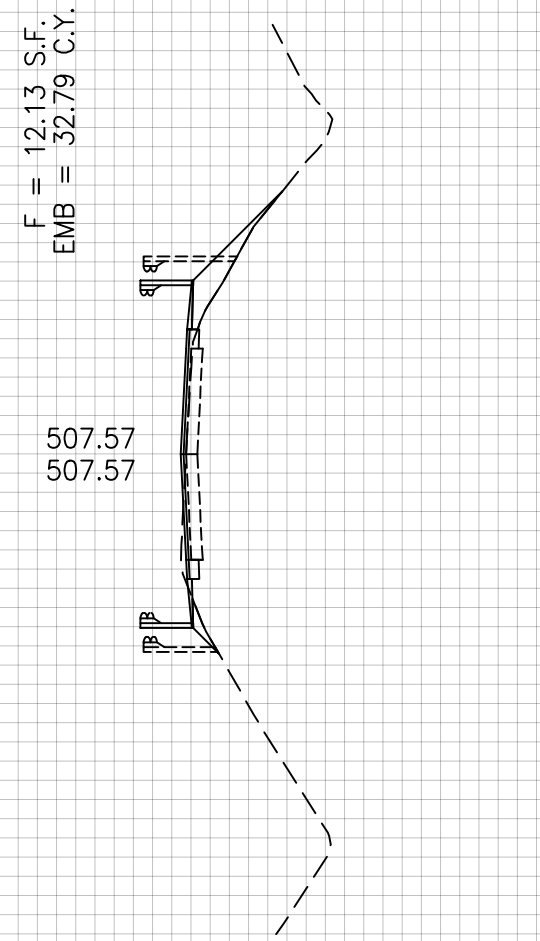
50 45 40 35 30 25 20 15 10 5 0 5 10 15 20 25 30 35 40 45 50

STATION 368+50

F.A.S. ROUTE	SECTION	COUNTY	TOTAL SHEETS	SHEET NUMBER
836	18-00094-00-RS	WASHINGTON	25	20
FEDERAL AID PROJECT		CONTRACT 97772		

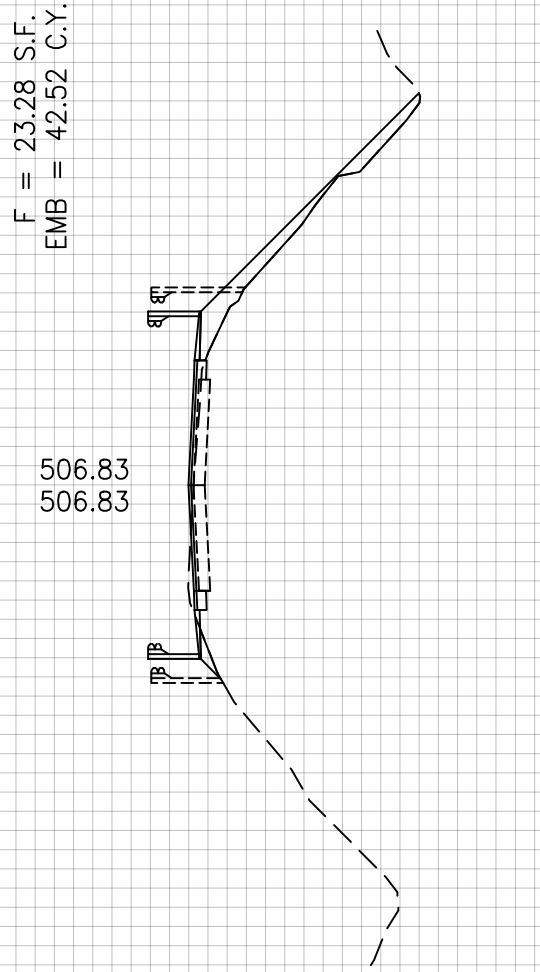
515
510
505
500
495
490

EXISTING R.O.W.



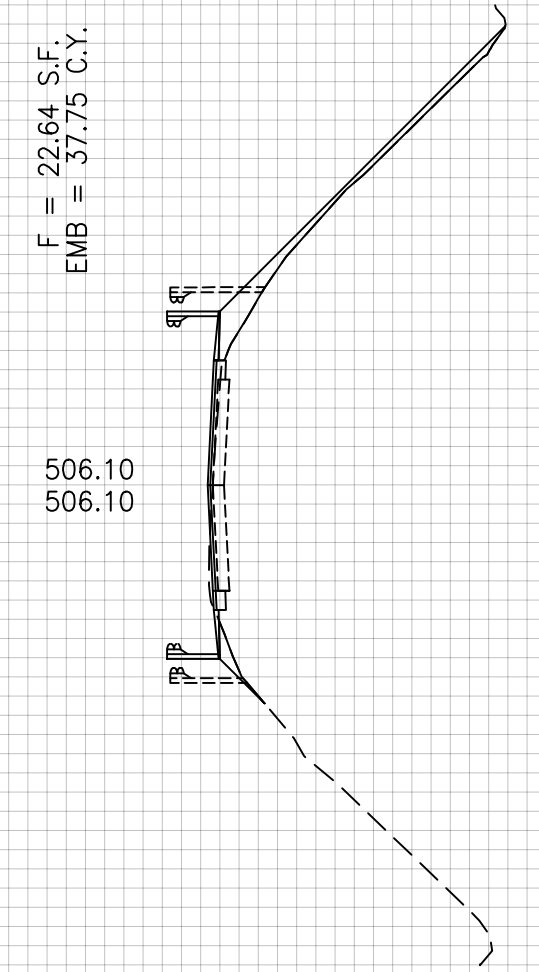
515
510
505
500
495
490

EXISTING R.O.W.



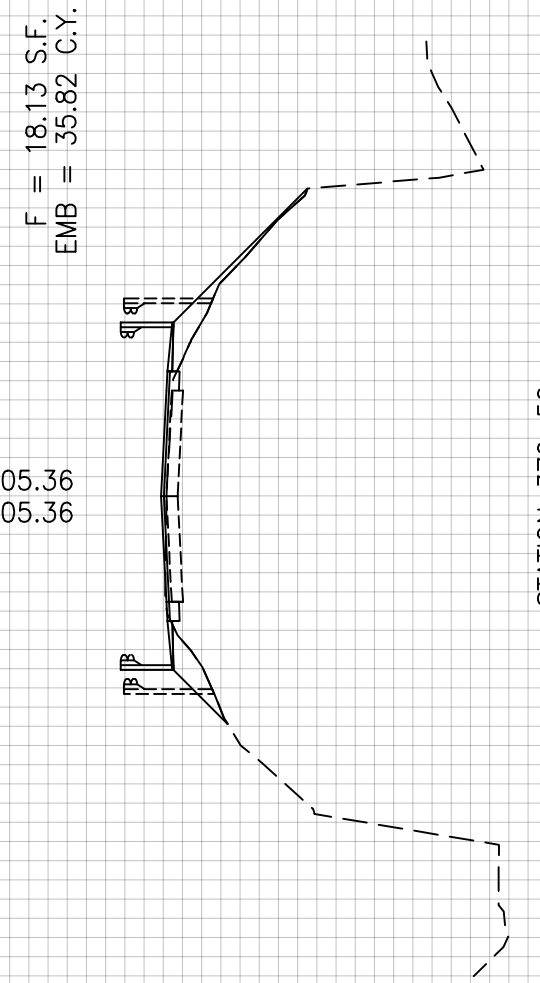
515
510
505
500
495
490
485

EXISTING R.O.W.



515
510
505
500
495
490
485
480

EXISTING R.O.W.



515
510
505
500
495
490

EXISTING R.O.W.

515
510
505
500
495
490

EXISTING R.O.W.

515
510
505
500
495
490
485

EXISTING R.O.W.

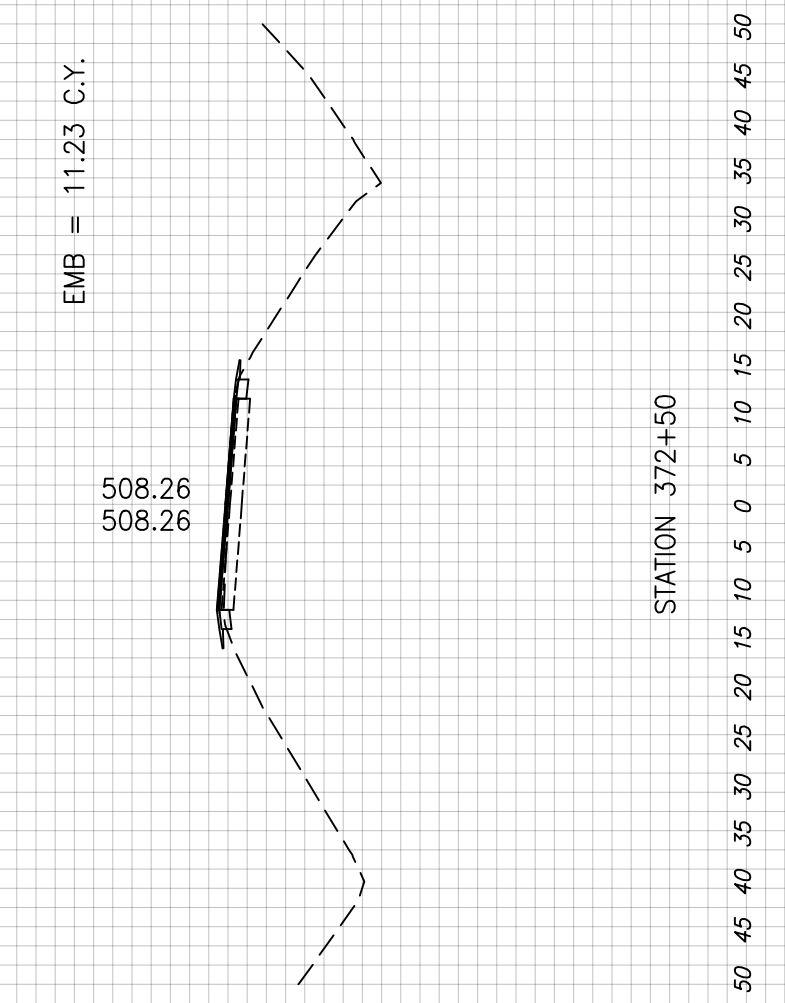
515
510
505
500
495
490
485
480

EXISTING R.O.W.

F.A.S. ROUTE	SECTION	COUNTY	TOTAL SHEETS	SHEET NUMBER
836	18-00094-00-RS	WASHINGTON	25	21
FEDERAL AID PROJECT		CONTRACT 97772		

515
510
505
500
495

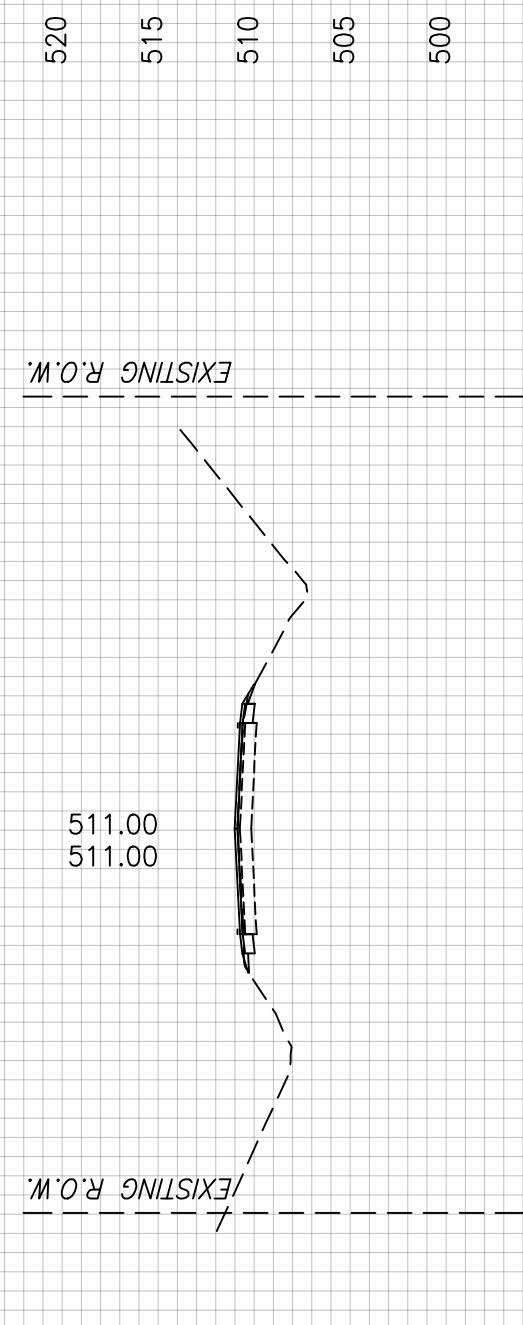
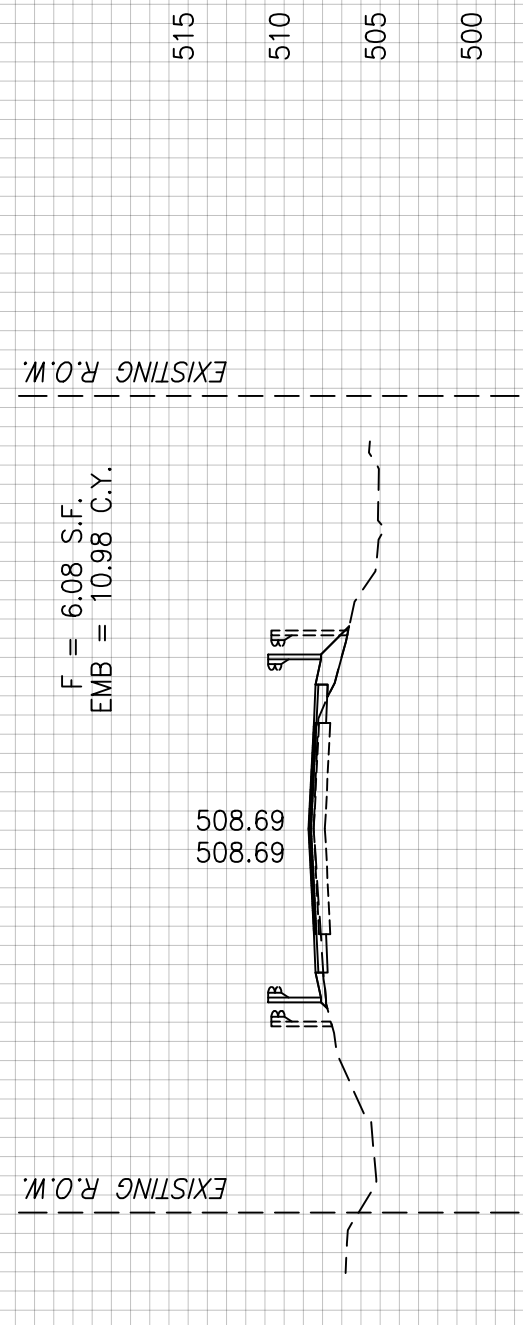
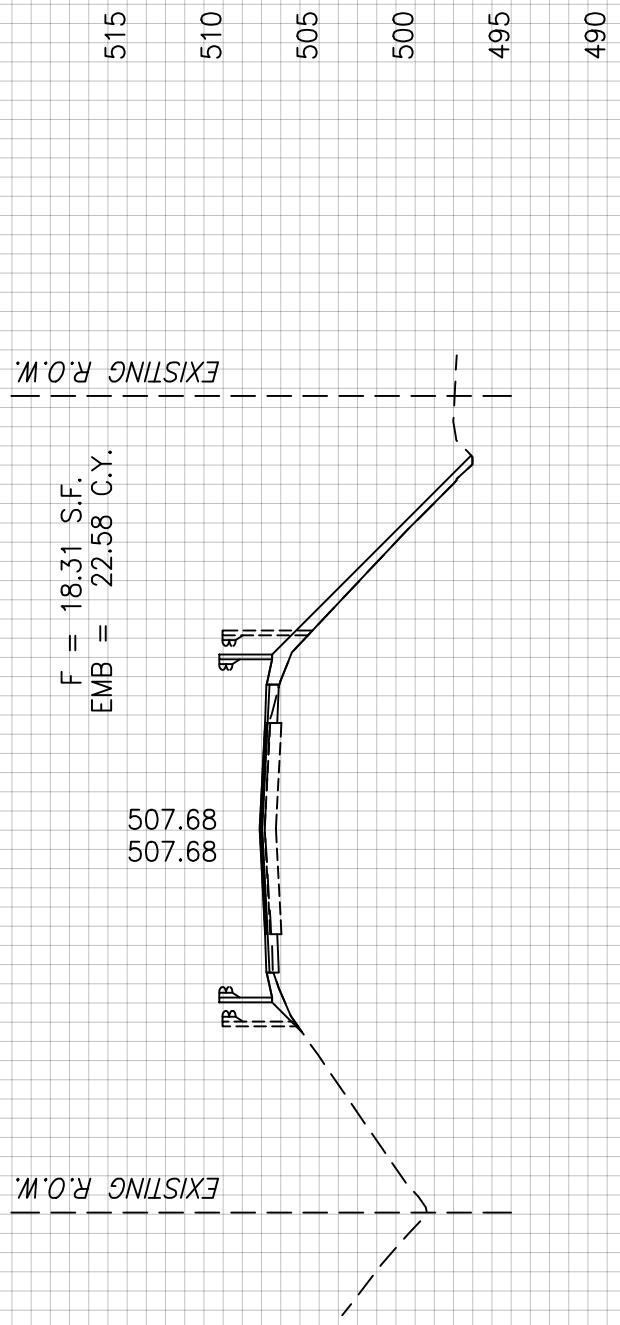
EXISTING R.O.W.



515
510
505
500
495

EXISTING R.O.W.

F.A.S. ROUTE	SECTION	COUNTY	TOTAL SHEETS	SHEET NUMBER
836	18-00094-00-RS	WASHINGTON	25	22
FEDERAL AID PROJECT		CONTRACT 97772		



50 45 40 35 30 25 20 15 10 5 0 5 10 15 20 25 30 35 40 45 50

F.A.S. ROUTE	SECTION	COUNTY	TOTAL SHEETS	SHEET NUMBER
836	18-00094-00-RS	WASHINGTON	25	23
FEDERAL AID PROJECT		CONTRACT 97772		

515
510
505
500
495
490
485
480

EXISTING R.O.W.

F = 32.52 S.F.
EMB = 62.98 C.Y.

505.67
505.67

EXISTING R.O.W.

515
510
505
500
495
490
485
480

STATION 403+00

515
510
505
500
495
490
485
480

EXISTING R.O.W.

F = 35.50 S.F.
EMB = 61.88 C.Y.

505.67
505.67

EXISTING R.O.W.

515
510
505
500
495
490
485
480

STATION 402+50

515
510
505
500
495
490
485
480

EXISTING R.O.W.

F = 31.33 S.F.
EMB = 56.96 C.Y.

506.20
506.20

EXISTING R.O.W.

515
510
505
500
495
490
485
480

STATION 402+00

515
510
505
500
495
490
485

EXISTING R.O.W.

F = 30.19 S.F.
EMB = 44.91 C.Y.

506.81
506.81

EXISTING R.O.W.

515
510
505
500
495
490
485

STATION 401+50

50 45 40 35 30 25 20 15 10 5 0 5 10 15 20 25 30 35 40 45 50

F.A.S ROUTE	SECTION	COUNTY	TOTAL SHEETS	SHEET NUMBER
836	18-00094-00-RS	WASHINGTON	25	24
FEDERAL AID PROJECT		CONTRACT 97772		

515
510
505
500
495
490
EXISTING R.O.W.

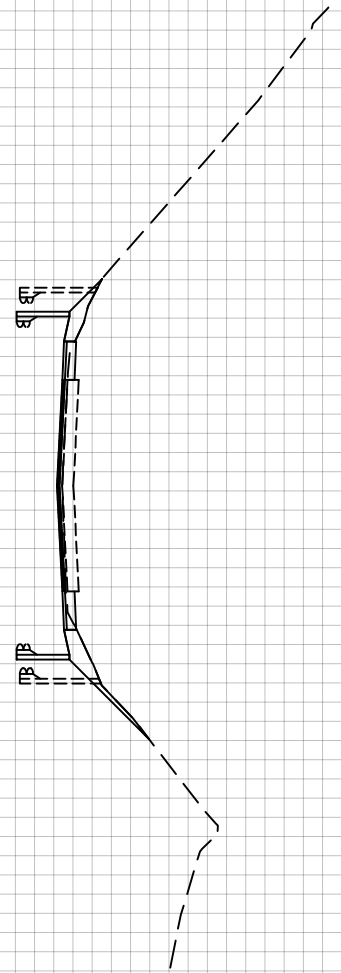
485
515
510
505
500
495
490
EXISTING R.O.W. 80 FT

515
510
505
500
495
490
485
EXISTING R.O.W.

515
510
505
500
495
490
485
EXISTING R.O.W.

F = 9.62 S.F.
EMB = 21.57 C.Y.

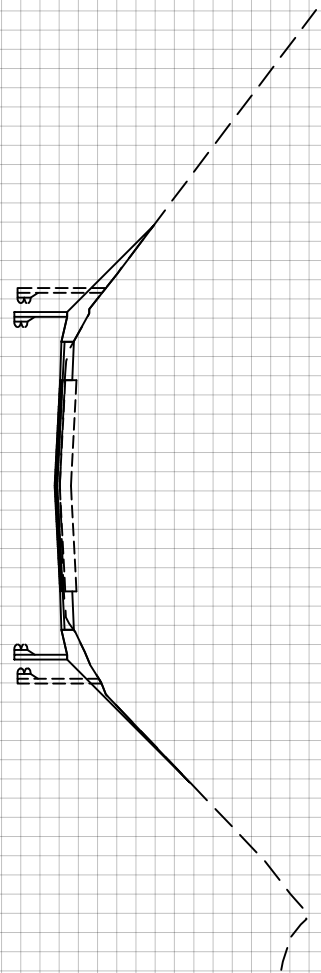
507.01
507.01



STATION 405+00

F = 13.68 S.F.
EMB = 21.39 C.Y.

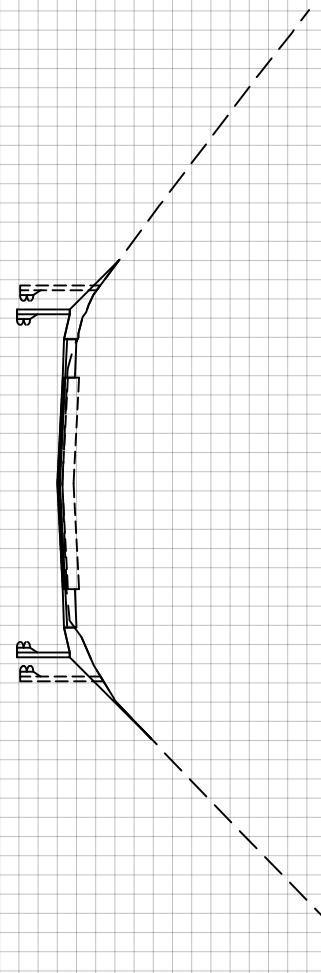
506.42
506.42



STATION 404+50

F = 9.42 S.F.
EMB = 28.00 C.Y.

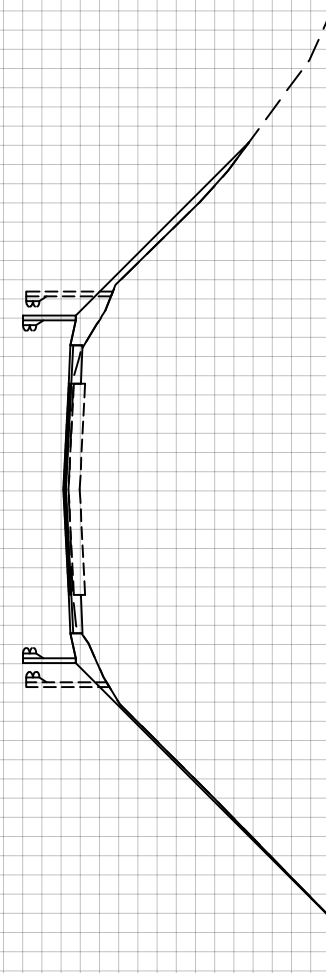
505.83
505.83



STATION 404+00

F = 20.82 S.F.
EMB = 49.39 C.Y.

505.67
505.67



STATION 403+50

50 45 40 35 30 25 20 15 10 5 0 5 10 15 20 25 30 35 40 45 50

EXISTING R.O.W.

EXISTING R.O.W.

EXISTING R.O.W.

EXISTING R.O.W.

F.A.S. ROUTE	SECTION	COUNTY	TOTAL SHEETS	SHEET NUMBER
836	18-00094-00-RS	WASHINGTON	25	25
FEDERAL AID PROJECT		CONTRACT 97772		

