

F.A.S. RTE.	SECTION	COUNTY	TOTAL SHEETS	SHEET NO.
	21-00062-04-SW	MONROE	13	1
		ILLINOIS	CONTRACT NO. 97775	

INDEX OF SHEETS

06-17-2022 LETTING ITEM 135

1. COVER SHEET
2. GENERAL NOTES, COMMITMENTS AND HIGHWAY STANDARDS
3. SUMMARY OF QUANTITIES
4. TYPICAL SECTIONS
5. SCHEDULE OF QUANTITIES
6. PLAN AND PROFILE
7. PAVEMENT MARKING PLAN
- 8-9. ADA DETAILS
10. TRAFFIC SIGNAL GENERAL NOTES, SUMMARY OF QUANTITIES, & DETAILS
11. TRAFFIC SIGNAL PLAN
12. TRAFFIC SIGNAL CABLE DIAGRAM
13. TRAFFIC SIGNAL PEDESTRIAN PUSH-BUTTON DETAIL

STATE OF ILLINOIS
DEPARTMENT OF TRANSPORTATION
PLANS FOR PROPOSED
FEDERAL AID HIGHWAY

ITEP FUNDING

FAS 850 – COUNTRY CLUB LANE – C.H. 2
FAU 9322 – HH ROAD AND FAP 312 – IL RTE 3
NORTH WATERLOO PEDESTRIAN CROSSING
SECTION 21-00062-04-SW
PROJECT NO. NU63(081)
COUNTY OF MONROE
JOB NO. C-98-065-22



LOCATION OF SECTION INDICATED THUS:

STRUCTURE NUMBERS

NONE

SCALES

PLAN 1" = 50'
PROFILE 1" = 25'



DESIGN CLASSIFICATION

ROAD NAME = IL RT 3/ HH RD/ COUNTRY CLUB LANE
RD CLASS. = PRINCIPAL ARTERIAL/MAJOR COLLECTOR/MAJOR COLLECTOR
2019 ADT = 25000 VPD/ 3000 VPD/ 4600 VPD
DESIGN SPEED: 50 MPH/40 MPH/35 MPH
POSTED SPEED: 45 MPH/35 MPH/ 30 MPH

UTILITIES

CALL J.U.L.I.E. BEFORE YOU DIG
800-892-0123

ELECTRIC:

CITY OF WATERLOO
WATERLOO, IL 62298
(618) 939-8600

MONROE COUNTY ELECTRIC CO-OP
WATERLOO, IL 62298
(618) 939-7171

TELEPHONE:

HARRISONVILLE TELEPHONE COMPANY
WATERLOO, ILLINOIS 62298
(618) 939-6112

GAS:

AMEREN ILLINOIS
BELLEVILLE, ILLINOIS 62221
(618) 236-4372

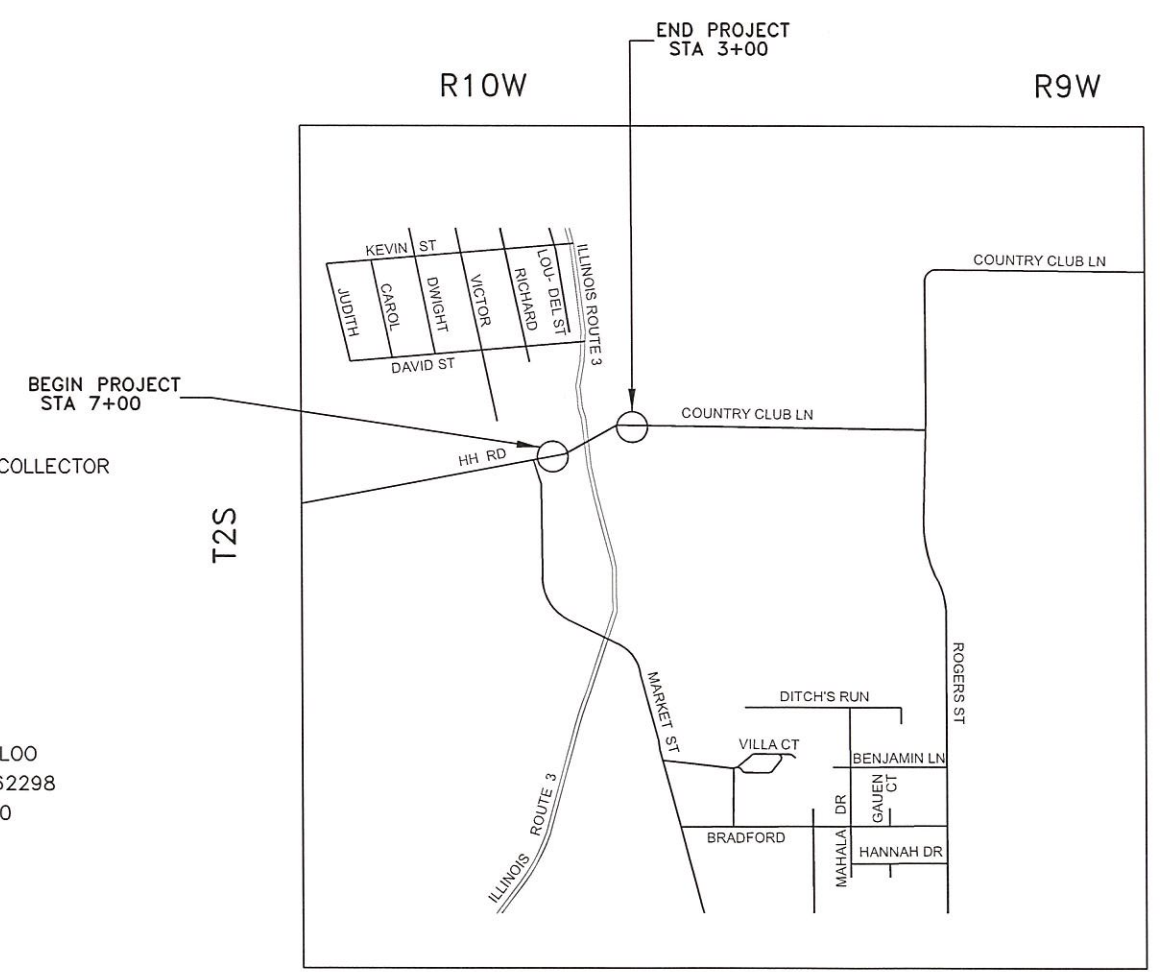
CITY OF WATERLOO
WATERLOO, IL 62298
(618) 939-8600

WATER:

CITY OF WATERLOO
WATERLOO, IL 62298
(618) 939-8600

CABLE TV:

CHARTER COMMUNICATIONS
MARYVILLE, IL 62062
(618) 345-8003



LOCATION MAP

GROSS LENGTH = 600.00 FEET = 0.114 MILES
NET LENGTH = 600.00 FEET = 0.114 MILES



STATE OF ILLINOIS
DEPARTMENT OF TRANSPORTATION

APPROVED March 25 20 22

Monroe County Engineer
Monroe County Highway Department

Passed 3/30 20 22

District 8 Engineer
Local Roads and Streets

Released for Bid Based on Limited Review 3/30 20 22

Region 5 Engineer

DRAWN BY CASEY L CARNAHAN DATE 03/24/2022
CHECKED BY AARON W METZGER DATE 03/24/2022

DESIGN CERTIFICATION
These plans were prepared by me or a full time member of my staff under my personal supervision.

County Engineer, Date 3-25-22
Illinois Registered Professional Engineer No. 055382
Expiration Date: 11/30/23

PRINTED BY THE AUTHORITY
OF THE STATE OF ILLINOIS

DRAWING FILE: S:\NORTH WATERLOO PEDESTRIAN CROSSING COVER

GENERAL NOTES

1. TRAFFIC CONTROL AND PROTECTION AND PROPER BARRICADES SHALL BE MAINTAINED BY THE CONTRACTOR.
2. THE CONTRACTOR WILL BE REQUIRED TO HAVE TWO FLAGGERS ON-SITE DURING ALL MAINLINE PAVING OPERATIONS.
3. THE CONTRACTOR IS RESPONSIBLE FOR CONTACTING THE MONROE COUNTY HIGHWAY DEPARTMENT AT LEAST 48 HOURS IN ADVANCE PRIOR TO COMMENCEMENT OF ANY CONSTRUCTION ACTIVITIES OR WORK REQUIRING INSPECTION OR APPROVAL.
4. USE ALL FLUORESCENT ORANGE 48" CONSTRUCTION SIGNS.
5. NO OVERNIGHT LANE CLOSURES WILL BE ALLOWED ON THIS PROJECT.
6. FACTORS USED FOR QUANTITY CALCULATIONS ARE AS FOLLOWS:
 ALL HOT-MIX ASPHALT - 112.0 LBS/SQ YD PER 1" THICKNESS
 ALL BITUMINOUS MATERIAL (TACK COAT) - 0.05 LB/SQ FT
7. THE THICKNESS OF THE BITUMINOUS MIXTURE SHOWN ON THE PLANS IS THE NOMINAL THICKNESS, DEVIATIONS FROM THE NOMINAL THICKNESS WILL BE PERMITTED WHEN SUCH DEVIATIONS OCCUR DUE TO IRREGULARITIES IN THE EXISTING SURFACE OR BASE ON WHICH THE BITUMINOUS MIXTURE IS PLACED.
8. ALL TEMPORARY PAVEMENT MARKINGS WILL BE PLACED IN SUCH A MANNER SO AS NOT TO INTERFERE WITH THE PLACEMENT OF PERMANENT PAVEMENT MARKINGS.
9. THERMOPLASTIC PAVEMENT MARKINGS SHALL MATCH EXISTING EXCEPT WHERE INDICATED ON THE PLANS AND AS DIRECTED BY THE ENGINEER.
10. ACCESS SHALL BE PROVIDED TO/FROM PRIVATE ENTRANCES AT ALL LOCATIONS DURING ALL STAGES.
11. THE CONTRACTOR SHALL VERIFY ALL DIMENSIONS AND CONDITIONS IN THE FIELD PRIOR TO CONSTRUCTION AND ORDERING MATERIALS.
12. 1/2" EXPANSION MATERIAL SHALL BE PLACED BETWEEN CURB AND SIDEWALK AT ALL LOCATIONS.
13. FORMS FOR COMBINATION CONCRETE CURB AND GUTTER SHALL BE OF METAL ONLY, EXCEPT THAT WOOD FORMS SHALL BE USED ON SHORT RADIUS CURVES.
14. AGGREGATE BASE SHALL BE PLACED AND COMPACTED, AS NEEDED, AND AS APPROVED BY THE ENGINEER, TO OBTAIN PROPER SIDEWALK SLOPE COST FOR THIS WORK IS CONSIDERED INCLUDED IN THE COST OF 4 INCH SIDEWALK.
15. EXISTING SIGNS SHALL BE REMOVED, STORED AND RE-ERECTED AS SHOWN IN THE PLANS. SIGNS NOT RE-ERECTED WILL REVERT BACK TO THE RESPONSIBLE PARTY. ANY DAMAGE TO SIGNS SHALL BE THE RESPONSIBILITY OF THE CONTRACTOR.
16. EXISTING DITCHES/SWALES MAY NEED TO BE REGRADED OR RESHAPED TO ENSURE ALL FLOWS ENTER THE PROPER DITCH, CULVERT OR OTHER DRAINAGE APPURTENANCES DURING AND AT THE COMPLETION OF THE PROJECT. COST FOR THIS WORK IS CONSIDERED INCLUDED IN THE COST OF EARTH EXCAVATION.
17. IT SHALL BE THE RESPONSIBILITY OF THE CONTRACTOR TO MAINTAIN POSITIVE DRAINAGE DURING VARIOUS STAGES OF CONSTRUCTION THIS INCLUDES ALL LABOR, EQUIPMENT AND MATERIALS USED BEYOND WHAT IS SPECIFIED IN THE PLANS. NECESSARY ITEMS SUCH AS TEMPORARY DITCHES OR PIPES WILL NOT BE PAID FOR SEPARATELY AND SHALL BE CONSIDERED INCLUDED IN THE COST OF EARTH EXCAVATION.

HIGHWAY STANDARDS

STANDARD SYMBOLS	000001-08
EROSION CONTROL	280001-07
SIDEWALK	424001-11 424006-05 424011-04 424016-05 424021-06 424031-02
DRAINAGE	542301-03
CURB AND GUTTER	606001-08
MEDIAN	606301-04
TRAFFIC CONTROL	701306-04 701311-03 701602-10 701701-10 701901-08
SIGNING	720001-01
PAVEMENT MARKING	780001-05 781001-04 782001-01
SIGNALS	814001-03 838001-01 857001-01 873001-02 876001-04 878001-11 880006-01 886001-01 886006-01

SALVAGE: NONE

COMMITMENTS: NONE

HOT-MIX ASPHALT MIXTURE REQUIRMENTS	
LOCATIONS	ALL
MIXTURE USE	SURFACE
AC/PG	PG 64-22
RAP % (MAX)	SEE SPECIAL PROVISIONS
DESIGN AIR VOIDS	4.0% @ Ndes= 70
MIXTURE COMPOSITION (GRADATION MIXTURE)	IL-9.5
FRICTION AGGREGATE	MIXTURE D
MIXTURE WEIGHT	112.0 LB/SQ YD/IN
QUALITY MANAGEMENT PROGRAM	QC/QA
SUBLOT SIZE	N/A
MATERIAL TRANSFER DEVICE	NO

DRAWING FILE: S:\NORTH WATERLOO PEDESTRIAN CROSSING\COVER

USER NAME -	DESIGNED -	REVISED -
	DRAWN -	REVISED -
PLOT SCALE = 100,000' / in.	CHECKED -	REVISED -
PLOT DATE -	DATE -	REVISED -

MONROE COUNTY
HIGHWAY DEPARTMENT

GENERAL NOTES, COMMITMENTS AND HIGHWAY STANDARDS

SCALE: N/A SHEET 1 OF 1 SHEETS STA. TO STA.

F.A.S. RTE.	SECTION	COUNTY	TOTAL SHEETS	SHEET NO.
	21-00082-04-SW	MONROE	13	2
CONTRACT NO. 97775			[UNLESS] FROM PROJECT	

SUMMARY OF QUANTITIES				
SP	CODE	ITEM	UNIT	QUANTITY
	20200100	EARTH EXCAVATION	CU YD	25
	20800150	TRENCH BACKFILL	CU YD	3.6
	25100115	MULCH METHOD, 2	ACRE	0.25
	40600290	BITUMINOUS MATERIALS (TACK COAT)	POUND	1160
	40600990	TEMPORARY RAMP	SQ YD	22
	40604062	HOT-MIX ASPHALT SURFACE COURSE, IL-9.5, MIX "D" N70	TON	290
	42400100	PORTLAND CEMENT CONCRETE SIDEWALK, 4 INCH	SQ FT	2350
	42400800	DETECTABLE WARNINGS	SQ FT	120
	44000157	HOT-MIX ASPHALT SURFACE REMOVAL, 2"	SQ YD	2563
	44000500	COMBINATION CURB AND GUTTER REMOVAL	FT	162
	44000600	SIDEWALK REMOVAL	SQ FT	386
	54213657	PRECAST REINFORCED CONCRETE END SECTION, 12"	EACH	1
	550A0050	STORM SEWERS, CLASS A, TYPE I, 12"	FT	39
	60605000	COMBINATION CURB AND GUTTER, TYPE B-6.24	FT	279
	60618300	CONCRETE MEDIAN SURFACE, 4 INCH	SQ FT	750
Δ	66900200	NON-SPECIAL WASTE DISPOSAL	CU YD	16
Δ	66900530	SOIL DISPOSAL ANALYSIS	EACH	1
Δ	66901001	REGULATED SUBSTANCES PRE-CONSTRUCTION PLAN	L SUM	1
Δ	66901003	REGULATED SUBSTANCES FINAL CONSTRUCTION REPORT	L SUM	1
Δ	66901006	REGULATED SUBSTANCES MONITORING	CAL DAYS	5
	67100100	MOBILIZATION	L SUM	1
	70300100	SHORT TERM PAVEMENT MARKING	FT	120
	70300150	SHORT TERM PAVEMENT MARKING REMOVAL	SQ FT	40
	70300211	TEMPORARY PAVEMENT MARKING LETTERS AND SYMBOLS - PAINT	SQ FT	166.4
	70300221	TEMPORARY PAVEMENT MARKING - LINE 4" - PAINT	FT	2616
	70300251	TEMPORARY PAVEMENT MARKING - LINE 8" - PAINT	FT	378
	70300261	TEMPORARY PAVEMENT MARKING - LINE 12" - PAINT	FT	586
	70300281	TEMPORARY PAVEMENT MARKING - LINE 24" - PAINT	FT	96
	72000100	SIGN PANEL - TYPE 1	SQ FT	5.64
	72400100	REMOVE SIGN PANEL ASSEMBLY - TYPE A	EACH	2
	72400500	RELOCATE SIGN PANEL ASSEMBLY - TYPE A	EACH	1
	78000100	THERMOPLASTIC PAVEMENT MARKING - LETTERS AND SYMBOLS	SQ FT	166.4
Δ	78000200	THERMOPLASTIC PAVEMENT MARKING - LINE 4"	FT	2616
Δ	78000500	THERMOPLASTIC PAVEMENT MARKING - LINE 8"	FT	378
Δ	78000600	THERMOPLASTIC PAVEMENT MARKING - LINE 12"	FT	586

SUMMARY OF QUANTITIES				
SP	CODE	ITEM	UNIT	QUANTITY
Δ	78000650	THERMOPLASTIC PAVEMENT MARKING - LINE 24"	FT	96
Δ	78100100	RAISED REFLECTIVE PAVEMENT MARKER	EACH	34
	78300200	RAISED REFLECTIVE PAVEMENT MARKER REMOVAL	EACH	34
	78300201	PAVEMENT MARKING REMOVAL - GRINDING	SQ FT	2026
Δ	80300100	LOCATING UNDERGROUND CABLE	FT	495
Δ	81028340	UNDERGROUND CONDUIT, PVC, 1 1/2" DIA.	FT	168
Δ	81028350	UNDERGROUND CONDUIT, PVC, 2" DIA.	FT	159
Δ	81028370	UNDERGROUND CONDUIT, PVC, 3" DIA.	FT	133
Δ	81400100	HANDHOLE	EACH	2
Δ	87301215	ELECTRIC CABLE IN CONDUIT, SIGNAL NO. 14 2C	FT	1312
Δ	87301225	ELECTRIC CABLE IN CONDUIT, SIGNAL NO. 14 3C	FT	1354
Δ	87301245	ELECTRIC CABLE IN CONDUIT, SIGNAL NO. 14 5C	FT	230
Δ	87301255	ELECTRIC CABLE IN CONDUIT, SIGNAL NO. 14 7C	FT	230
Δ	87301305	ELECTRIC CABLE IN CONDUIT LEAD IN NO. 14 1 PAIR	FT	905
Δ	87301900	ELECTRIC CABLE IN CONDUIT EQUIPMENT, GROUNDING CONDUCTOR, NO. 6 1C	FT	587
Δ	87502680	TRAFFIC SIGNAL POST, ALUMINUM 14 FT.	EACH	3
Δ	87800100	CONCRETE FOUNDATION, TYPE A	FT	21
Δ	87900200	DRILL EXISTING HANDHOLE	EACH	4
Δ	88102825	PEDESTRIAN SIGNAL HEAD, POLYCARBONATE, LED, 1-FACE, BRACKET MOUNTED WITH COUNT DOWN TIMER	EACH	6
Δ	88500520	INDUCTION LOOP DETECTOR AMPLIFIER WITH CALL DELAY AND CALL CARRY-OVER, DIGITAL DESIGN	EACH	4
Δ	88600600	DETECTOR LOOP REPLACEMENT	FT	677
Δ	89501250	RELOCATE EXISTING TRAFFIC SIGNAL EQUIPMENT	EACH	1
Δ	89502200	MODIFY EXISTING CONTROLLER	EACH	1
Δ	89502300	REMOVE ELECTRIC CABLE FROM CONDUIT	FT	1138
Δ	89502385	REMOVE EXISTING CONCRETE FOUNDATION	EACH	1
*	X0322936	REMOVE EXISTING FLARED END SECTION	EACH	1
*	X2501000	SEEDING, CLASS 2 (SPECIAL)	ACRE	0.25
*	X4402020	CONCRETE MEDIAN SURFACE REMOVAL	SQ FT	1115
*	X5510100	STORM SEWER REMOVAL	FT	10
*	X7010216	TRAFFIC CONTROL AND PROTECTION, (SPECIAL)	L SUM	1
*Δ	X7800200	PAINT PAVEMENT MARKING CURB	FT	208
*Δ	X8760200	ACCESSIBLE PEDESTRIAN SIGNALS	EACH	6
*Δ	X8760201	PEDESTRIAN PUSH-BUTTON POST	EACH	3
*Δ	X8950450	REMOVE EXISTING UNDERGROUND CONDUIT	FT	48

Δ SPECIALTY ITEMS

Δ SPECIALTY ITEMS

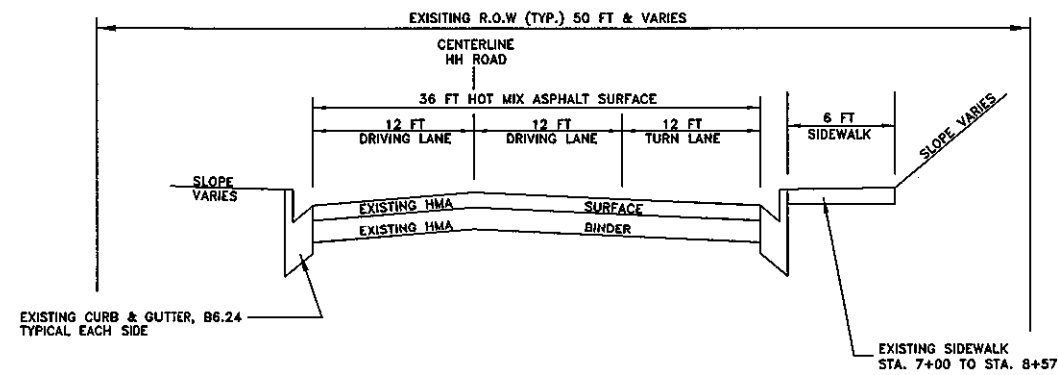
USER NAME -	DESIGNED -	REVISED -
PLOT SCALE = 100,000' / in.	DRAWN -	REVISED -
PLOT DATE -	CHECKED -	REVISED -
	DATE -	REVISED -

MONROE COUNTY
HIGHWAY DEPARTMENT

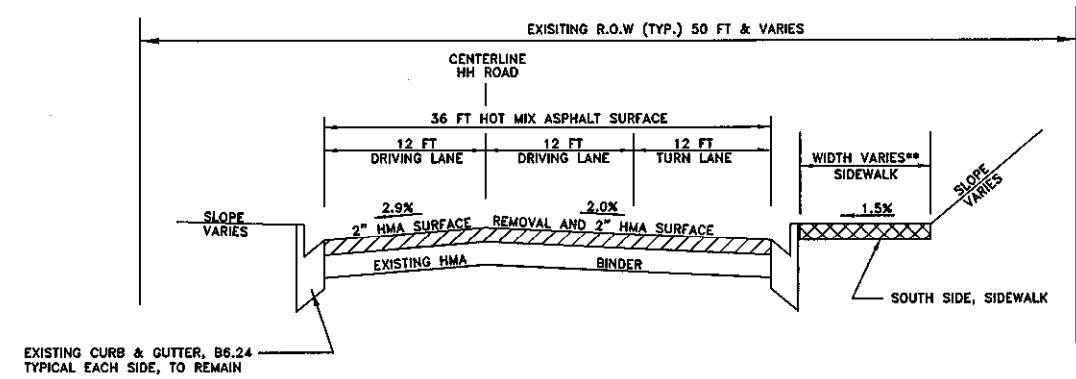
SUMMARY OF QUANTITIES	
SCALE: NA	SHEET 1 OF 1 SHEETS STA. TO STA.

F.A.S. RTE.	SECTION	COUNTY	TOTAL SHEETS	SHEET NO.
	21-00062-04-SW	MONROE	13	3
CONTRACT NO. 97775			ILLINOIS FED. AID PROJECT	

DRAWING FILE: S:\NORTH WATERLOO PEDESTRIAN CROSSING.COVER

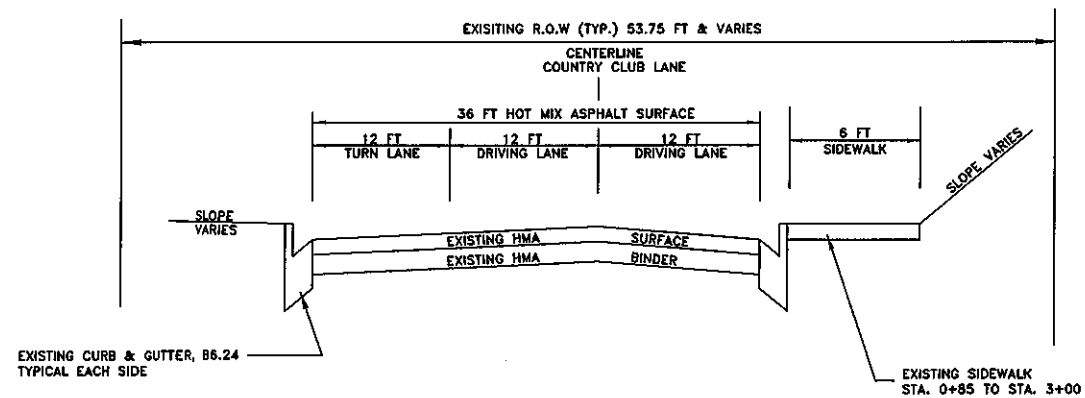


EXISTING SECTION
HH ROAD
STA. 7+00 TO STA. 9+57

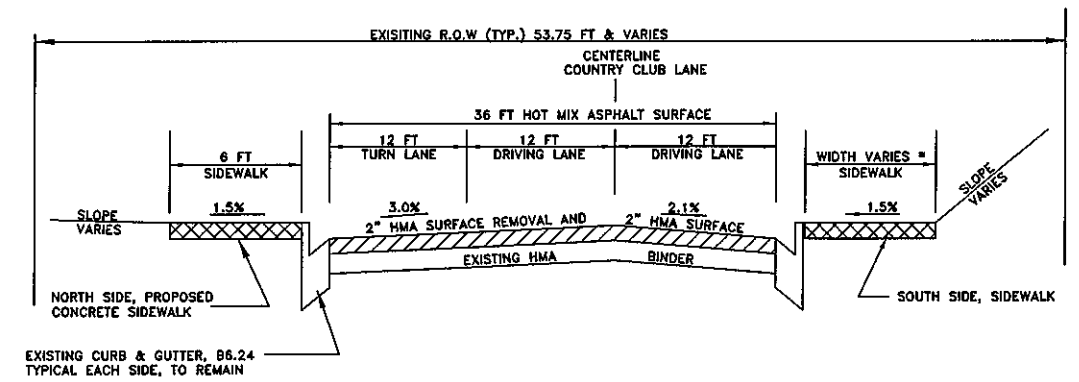


PROPOSED SECTION
HH ROAD
STA. 7+00 TO STA. 9+57

** PROPOSED 7 FT SIDEWALK STA. 8+57 TO STA. 9+57
EXISTING 6 FT SIDEWALK STA. 7+00 TO STA. 8+57



EXISTING SECTION
COUNTRY CLUB LANE
STA. 0+35 TO STA. 3+00



PROPOSED SECTION
COUNTRY CLUB LANE
STA. 0+35 TO STA. 3+00

* PROPOSED 7 FT SIDEWALK STA. 0+35 TO STA. 0+85
EXISTING 6 FT SIDEWALK STA. 0+85 TO STA. 3+00

USER NAME =	DESIGNED -	REVISED -
	DRAWN -	REVISED -
PLOT SCALE =	CHECKED -	REVISED -
PLOT DATE =	DATE -	REVISED -

MONROE COUNTY
HIGHWAY DEPARTMENT

TYPICAL SECTIONS

SCALE: SHEET OF SHEETS STA. TO STA.

F.A. RTE.	SECTION	COUNTY	TOTAL SHEETS	SHEET NO.
	21-00062-04-SW	MONROE	13	4
CONTRACT NO. 97775				
ILLINOIS FED. AID PROJECT				

HOT-MIX ASPHALT QUANTITIES				
LOCATION	HMA SURFACE COURSE IL - 9.5 MIX "D" N70	HMA SURFACE REMOVAL 2"	BITUMINOUS MATERIALS (TACK COAT)	TEMPORARY RAMP
	TON	SQ YD	LB	SQ YD
STA. 7+00 TO STA. 9+57	147.5	1304	590	11.2
STA. 0+35 TO STA. 3+00	142.5	1259	570	10.8
TOTAL	290	2563	1160	22

DRAINAGE QUANTITIES						
LOCATION	SIDE	PRECAST REINFORCED CONCRETE END SECTION, 12"	STORM SEWER CLASS A TYPE I, 12"	REMOVE EXISTING FLARED END SECTION	STORM SEWER REMOVAL	TRENCH BACKFILL
		EACH	FOOT	EACH	FOOT	CU YD
STA. 0+30 TO 0+60 STA	RT	1	39	1	10	3.6
TOTAL		1	39	1	10	3.6

EARTH EXCAVATION QUANTITIES					
LOCATION	EARTH EXCAVATION	EARTH EXCAVATION W/ 25% SHRINKAGE	EMBANKMENT REQUIRED	EARTH EXCAVATION BALANCE	NON-SPECIAL WASTE DISPOSAL
	CU YD	CU YD	CU YD	CU YD	CU YD
STA. 7+00 TO STA. 3+00	25	18.75	0	18.75	16
TOTAL	25	18.75	0	18.75	16

*ALL EXCESS MATERIAL EXCAVATED SHALL BECOME PROPERTY OF THE CONTRACTOR. THE COST FOR HAULING AND DISPOSAL OF EXCESS MATERIAL SHALL BE INCLUDED IN THE COST OF EARTH EXCAVATION OR NON-SPECIAL WASTE DISPOSAL.

SIGN SCHEDULE						
LOCATION			DESCRIPTION			*SIGN PANEL TYPE 1
STATION	OFFSET	SIDE	SIGN	SHAPE	SIZE	SQ FT
		LT/RT				
HH ROAD						
9+49.47	43.50	LT	R10-3EL	RECTANGLE	9X15	0.94
9+39.02	20.19	RT	R10-3EL	RECTANGLE	9X15	0.94
9+46.03	31.2	RT	R10-3EL	RECTANGLE	9X15	0.94
COUNTRY CLUB LANE						
0+41.62	35.16	RT	R10-3EL	RECTANGLE	9X15	0.94
0+56.59	21.75	LT	R10-3ER	RECTANGLE	9X15	0.94
IL ROUTE 3						
2174+58.29	36.26	RT	R10-3ER	RECTANGLE	9X15	0.94
TOTAL						5.64

*SEE TRAFFIC SIGNAL PLANS FOR ADDITIONAL INFORMATION

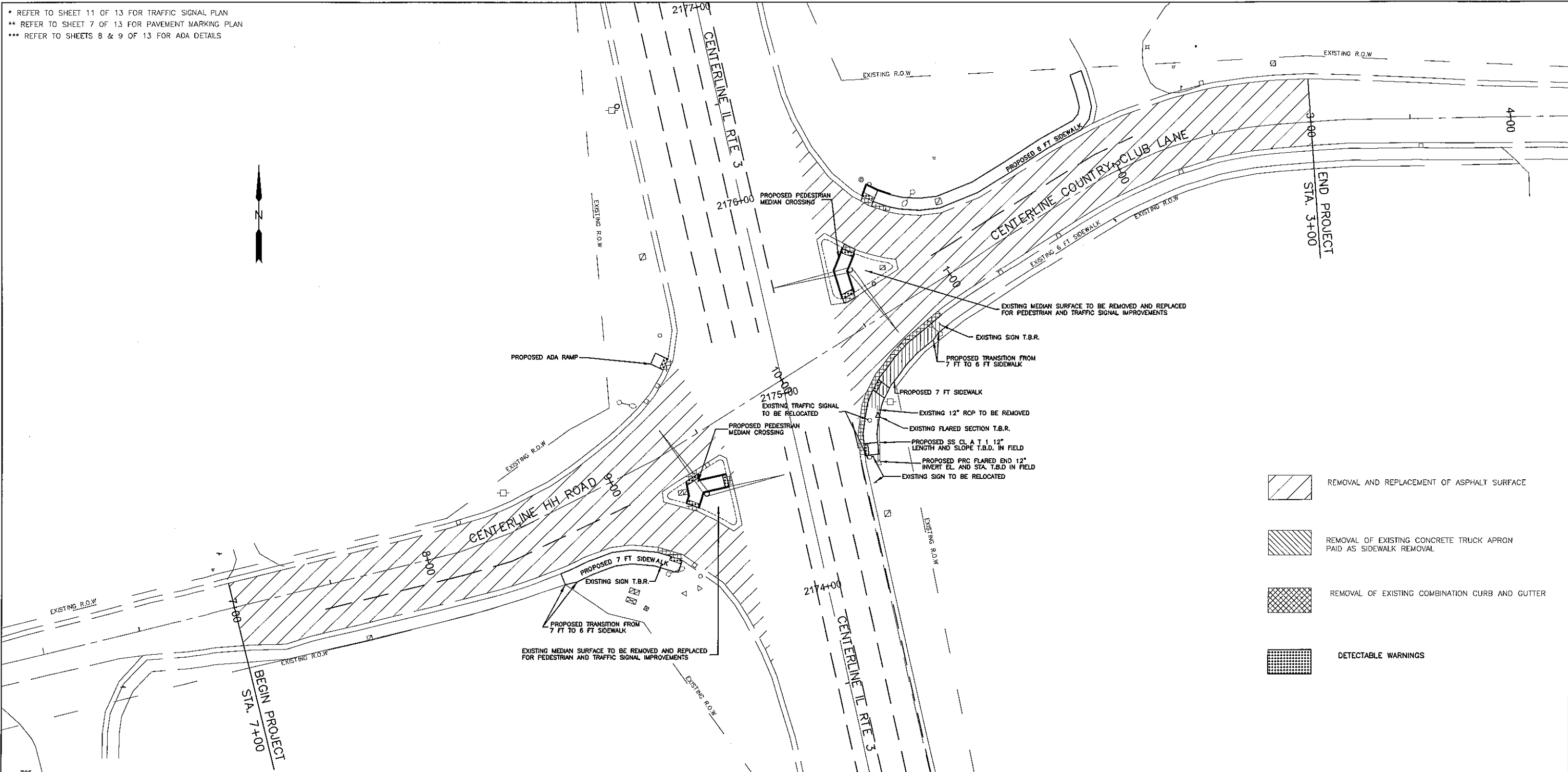
TEMPORARY PAVEMENT MARKING QUANTITIES									
LOCATION	TEMPORARY PAVEMENT MARKING - LINE 4"		TEMPORARY PAVEMENT MARKING LETTERS AND SYMBOLS	TEMPORARY PAVEMENT MARKING LINE 24"	TEMPORARY PAVEMENT MARKING LINE 12"	TEMPORARY PAVEMENT MARKING LINE 8"	SHORT TERM PAVEMENT MARKING	SHORT TERM PAVEMENT MARKING REMOVAL	PAVEMENT MARKING REMOVAL GRINDING
	YELLOW SOLID	WHITE SOLID							
	FOOT	FOOT	SQUARE FOOT	FOOT	FOOT	FOOT	FOOT	SQUARE FOOT	SQUARE FOOT
STA. 7+00 TO STA. 3+00	884	1732	166.4	96	586	378	120	40	2026
SUBTOTAL	884	1732							
TOTAL	2616		166.4	96	586	378	120	40	2026





PERMANENT PAVEMENT MARKING QUANTITIES									
LOCATION	THERMOPLASTIC PAVEMENT MARKING - LINE 4"		THERMOPLASTIC PAVEMENT MARKING LETTERS AND SYMBOLS	THERMOPLASTIC PAVEMENT MARKING LINE 24"	THERMOPLASTIC PAVEMENT MARKING LINE 12"	THERMOPLASTIC PAVEMENT MARKING LINE 8"	RAISED REFLECTIVE PAVEMENT MARKERS		RAISED REFLECTIVE PAVEMENT MARKER REMOVAL
	YELLOW SOLID	WHITE SOLID					2-WAY AMBER	1-WAY WHITE	
	FOOT	FOOT	SQUARE FOOT	FOOT	FOOT	FOOT	EACH	EACH	EACH
STA. 7+00 TO STA. 3+00	884	1732	166.4	96	586	378	13	21	34
SUBTOTAL	884	1732					13	21	
TOTAL	2616		166.4	96	586	378	34		34

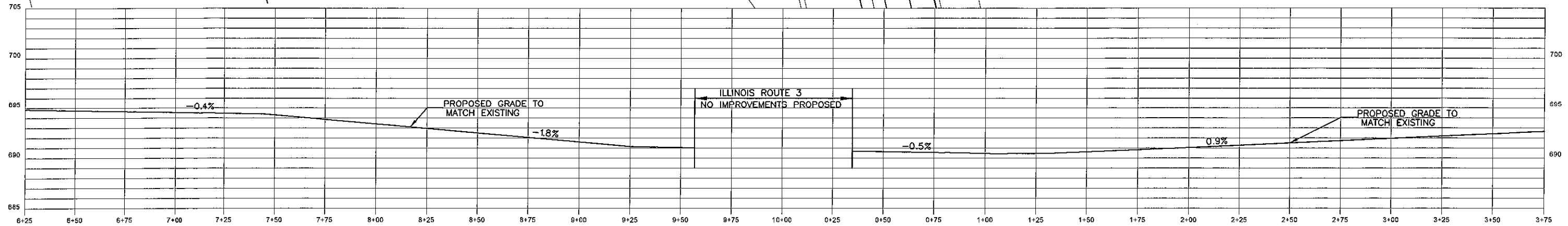
DRAWING FILE: S:\NORTH WATERLOO PEDESTRIAN CROSSING\COVER

USER NAME =	DESIGNED -	REVISED -	MONROE COUNTY HIGHWAY DEPARTMENT	SCHEDULE OF QUANTITIES			F.A.S. RTE.	SECTION	COUNTY	TOTAL SHEETS	SHEET NO.
PLOT SCALE = 100,000' / in.	DRAWN -	REVISED -		SCALE: NA	SHEET 1	OF 1 SHEETS	STA.	21-00062-04-SW	MONROE	13	5
PLOT DATE =	CHECKED -	REVISED -					TO STA.				
	DATE -	REVISED -									CONTRACT NO. 97775
ILLINOIS FED. AID PROJECT											

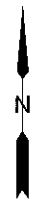
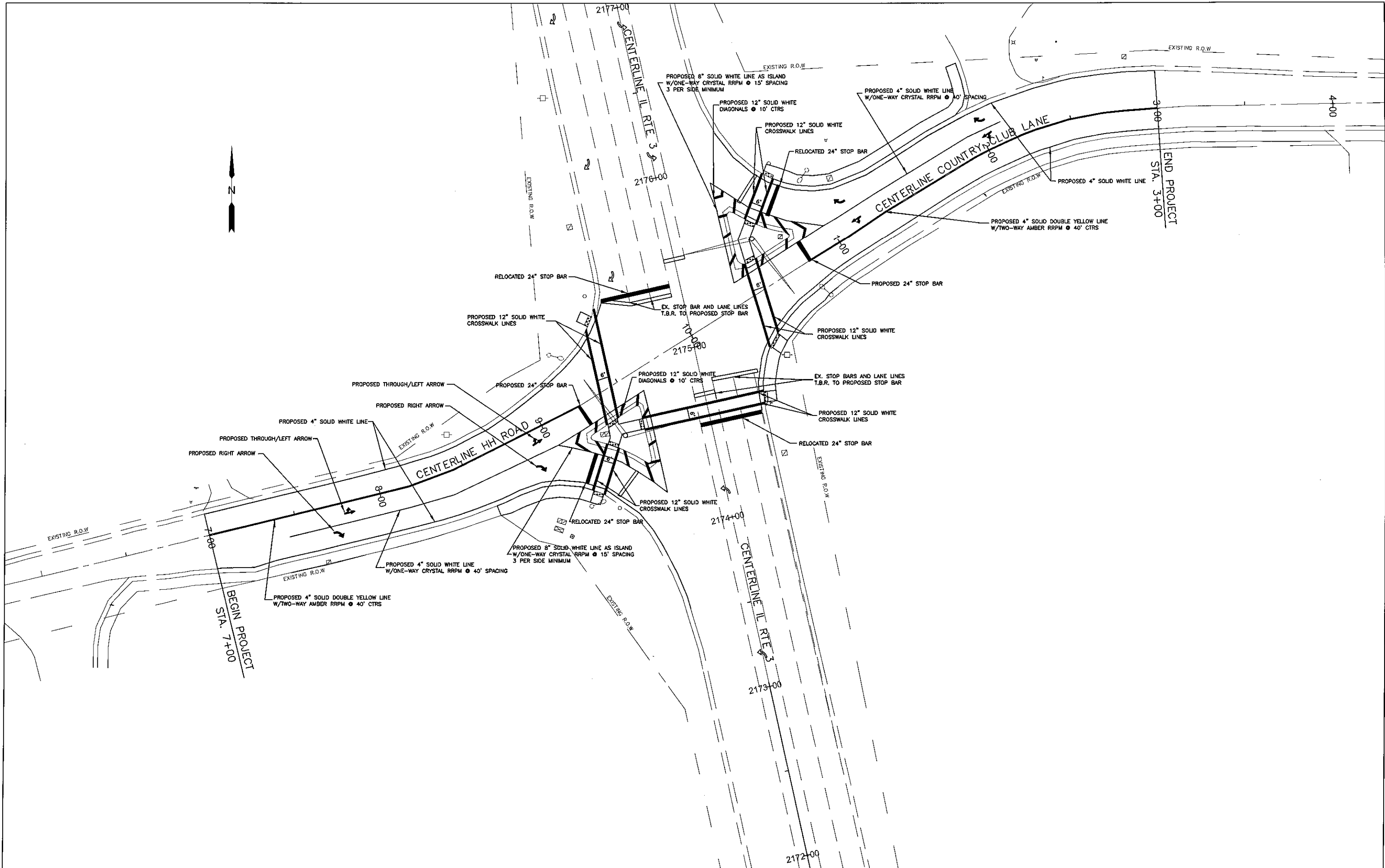
* REFER TO SHEET 11 OF 13 FOR TRAFFIC SIGNAL PLAN
 ** REFER TO SHEET 7 OF 13 FOR PAVEMENT MARKING PLAN
 *** REFER TO SHEETS 8 & 9 OF 13 FOR ADA DETAILS



-  REMOVAL AND REPLACEMENT OF ASPHALT SURFACE
-  REMOVAL OF EXISTING CONCRETE TRUCK APRON PAID AS SIDEWALK REMOVAL
-  REMOVAL OF EXISTING COMBINATION CURB AND GUTTER
-  DETECTABLE WARNINGS



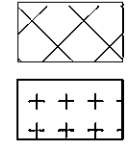
USER NAME =	DESIGNED -	REVISED -	MONROE COUNTY HIGHWAY DEPARTMENT	PLAN AND PROFILE				F.A. RTE.	SECTION	COUNTY	TOTAL SHEETS	SHEET NO.	
PLOT SCALE =	DRAWN -	REVISED -		SCALE:	SHEET	OF	SHEETS	STA.	TO STA.	21-00062-04-SW	MONROE	13	6
PLOT DATE =	CHECKED -	REVISED -								CONTRACT NO. 97775			
	DATE -	REVISED -								ILLINOIS FED. AID PROJECT			



USER NAME * DESIGNED - DRAWN - PLOT SCALE * CHECKED - PLOT DATE * DATE -			REVISED - REVISED - REVISED - REVISED -			MONROE COUNTY HIGHWAY DEPARTMENT		PAVEMENT MARKING PLAN			F.A. RTE. 21-00062-04-SW		COUNTY MONROE		TOTAL SHEETS 13		SHEET NO. 7	
						SCALE: SHEET 1 OF 1 SHEETS STA. TO STA.			CONTRACT NO. 97775 ILLINOIS FED. AID PROJECT									

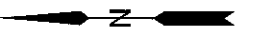
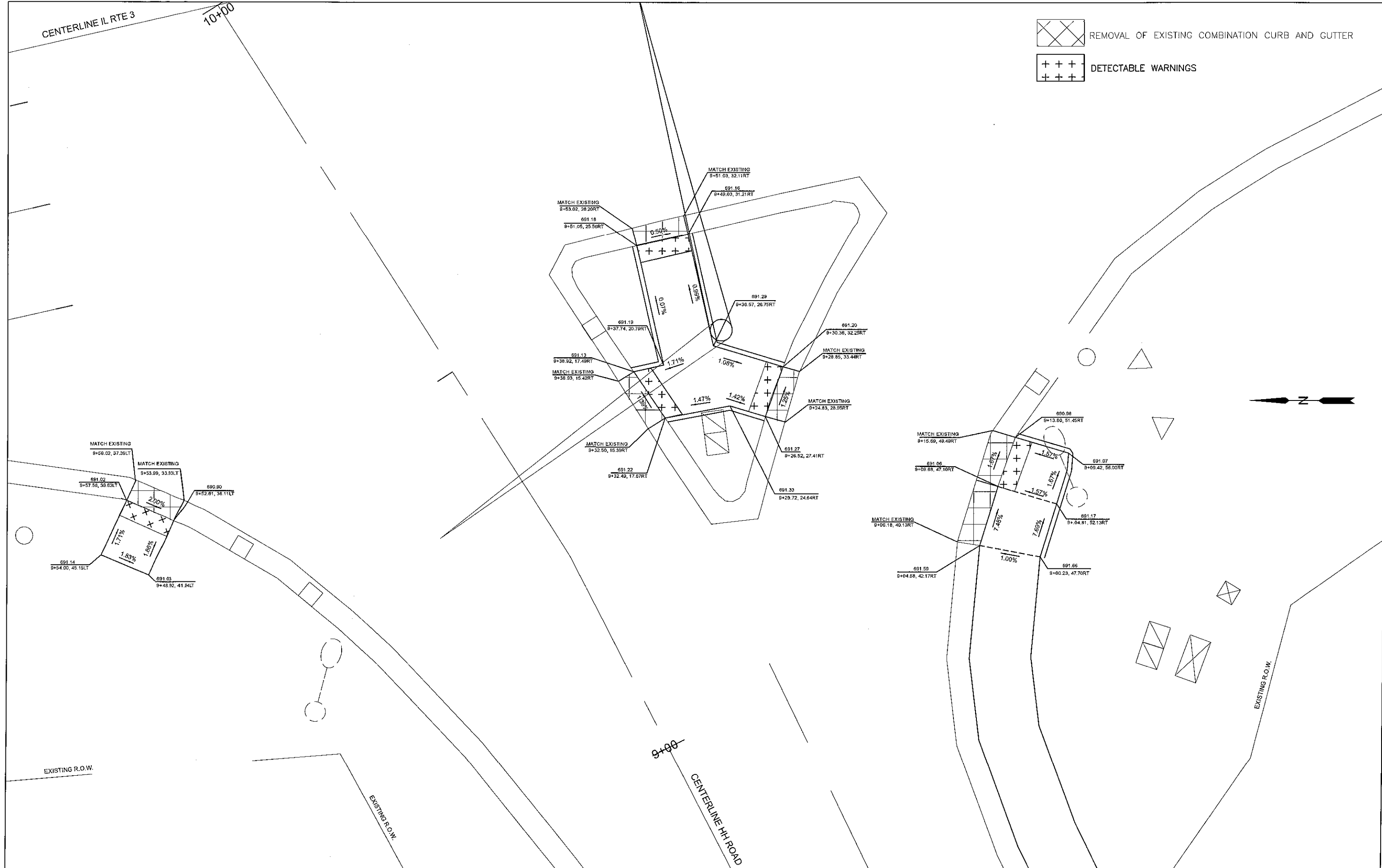
CENTERLINE IL RTE 3

10+00



REMOVAL OF EXISTING COMBINATION CURB AND GUTTER

DETECTABLE WARNINGS



USER NAME *	DESIGNED -	REVISED -
	DRAWN -	REVISED -
PLOT SCALE *	CHECKED -	REVISED -
PLOT DATE *	DATE -	REVISED -

MONROE COUNTY
HIGHWAY DEPARTMENT

ADA DETAILS

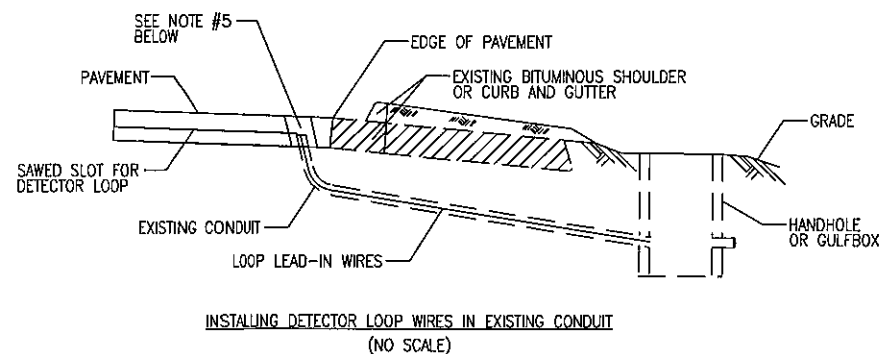
SCALE: 1" = 10' SHEET 2 OF 2 SHEETS STA. TO STA.

F.A. RTE.	SECTION	COUNTY	TOTAL SHEETS	SHEET NO.
	21-00062-04-SW	MONROE	13	9
CONTRACT NO. 97775				
ILLINOIS FED. AID PROJECT				

GENERAL NOTES

- TRAFFIC SIGNALS SHALL BE OPERATIONAL AND ALL TRAFFIC SIGNAL WORK SHALL BE COMPLETED DURING THE ILLINOIS 3 PEDESTRIAN IMPROVEMENTS.
- ALL MOUNTING HARDWARE SHALL BE ALUMINUM. ALL BOLTS, SCREWS, NUTS, AND WASHERS SHALL BE STAINLESS STEEL. ANTI-SEIZE PASTE COMPOUND SHALL BE USED ON ALL MOUNTING HARDWARE FIELD CONNECTIONS.
- THE LOCATION OF THE TRAFFIC SIGNAL POST SHALL BE APPROVED BY THE ENGINEER BEFORE FOUNDATIONS ARE CONSTRUCTED. POLE CENTER SHALL BE LOCATED A MINIMUM OF 4 FEET FROM THE BACK OF CURB.
- ALL TRAFFIC SIGNAL CABLES SHALL BE #14 AWG STRANDED COPPER UNLESS OTHERWISE SPECIFIED. TERMINAL ENDS SHALL HAVE CRIMPED-ON FORK TONGUE CONNECTORS.
- THE LOCATION OF ALL DETECTOR LOOPS SHALL BE APPROVED BY THE IDOT BEFORE ANY SLOTS ARE SAWED IN THE PAVEMENT.
- DETECTOR LOOP LEAD-IN SPLICES SHALL BE MADE IN A HANDHOLE PER ARTICLE 873.03 OF THE STANDARD SPECIFICATIONS FOR ROAD AND BRIDGE CONSTRUCTION AND STANDARD DRAWING 885001. CONDUCTORS SHALL BE SPLICED IN A RIGID MOLD. ROSIN-CORE SOLDER SHALL BE USED.
- CALL DELAY SHALL NOT FUNCTION WHEN THE RELATED PHASES ARE IN THE GREEN MODE.
- ALL HANDHOLES SHALL BE CAST-IN-PLACE PORTLAND CEMENT CONCRETE (PER ARTICLE 814.03(A)). THE CAST-IN-PLACE LEGEND ON THE COVER SHALL BE "TRAFFIC SIGNALS". SLOPE HANDHOLE COVERS TO MATCH PROPOSED GRADE ELEVATIONS.
- ALL INDUCTIVE LOOP DETECTORS SUPPLIED FOR THIS PROJECT SHALL HAVE THE CAPACITY OF OPERATING WITH BOTH DELAY AND EXTENSION MODES ACTIVE. IF A TIME SETTING IS PROGRAMMED, THEY SHALL BE RACK MOUNTED.
- CABLE MARKING TAPE SHALL BE INCLUDED WITH THE PAY ITEM "UNDERGROUND CONDUIT" AND INSTALLED PER ARTICLE 810.04 OF THE STANDARD SPECIFICATION FOR ROAD AND BRIDGE CONSTRUCTION.
- A 1/4" DIAMETER CONTINUOUS NYLON PULL ROPE SHALL BE FURNISHED AND INSTALLED IN ALL NEW CONDUITS. THIS WORK SHALL BE INCLUDED WITH THE CONDUIT PAY ITEMS.
- QUADRUPLE DETECTOR LOOPS SHALL HAVE 3 TURNS WITH SIX WIRES IN THE CENTER SLOT.
- ALL EXISTING TRAFFIC SIGNAL EQUIPMENT TO BE REMOVED SHALL REMAIN THE PROPERTY OF IDOT AND SHALL BE DELIVERED TO THEIR MAINTENANCE FACILITY AS DIRECTED BY THE ENGINEER.
- LOCATE UNDERGROUND CABLES PRIOR TO ATTEMPTING TO CONSTRUCT THIS PROJECT.
- ANY EXTENDERS NECESSARY FOR INSTALLATION OF THE PEDESTRIAN PUSH BUTTONS SHALL BE INCIDENTAL TO THE PRICE FOR PEDESTRIAN PUSH-BUTTON.
- THE FOLLOWING IDOT STANDARDS SHALL APPLY TO CONSTRUCTION OF THE SIGNALS: 000001-08, 606301-04, 720001-01, 814001-03, 838001-01, 857001-01, 873001-02, 876001-04, 878001-11, 880006-01, 886001-01, 886006-01.

CODE NUMBER	ITEM	UNIT	QUANTITY
60618300	CONCRETE MEDIAN SURFACE, 4 INCH	SQ FT	750
72000100	SIGN PANEL - TYPE 1	SQ FT	5.64
80300100	LOCATING UNDERGROUND CABLE	FOOT	495
81028340	UNDERGROUND CONDUIT, PVC, 1 1/2" DIA.	FOOT	168
81028350	UNDERGROUND CONDUIT, PVC, 2" DIA.	FOOT	159
81028370	UNDERGROUND CONDUIT, PVC, 3" DIA.	FOOT	133
81400100	HANDHOLE	EACH	2
87301215	ELECTRIC CABLE IN CONDUIT, SIGNAL NO. 14 2C	FOOT	1312
87301225	ELECTRIC CABLE IN CONDUIT, SIGNAL NO. 14 3C	FOOT	1354
87301245	ELECTRIC CABLE IN CONDUIT, SIGNAL NO. 14 5C	FOOT	230
87301255	ELECTRIC CABLE IN CONDUIT, SIGNAL NO. 14 7C	FOOT	230
87301305	ELECTRIC CABLE IN CONDUIT, LEAD IN, NO. 14 1 PAIR	FOOT	905
87301900	ELECTRIC CABLE IN CONDUIT, EQUIPMENT GROUNDING CONDUCTOR, NO. 6 1C	FOOT	587
87502680	TRAFFIC SIGNAL POST, ALUMINUM 14 FT.	EACH	3
87800100	CONCRETE FOUNDATION, TYPE A	FOOT	21
87900200	DRILL EXISTING HANDHOLE	EACH	4
88102825	PEDESTRIAN SIGNAL HEAD, POLYCARBONATE, LED, 1-FACE, BRACKET MOUNTED WITH COUNT DOWN TIMER	EACH	6
88500520	INDUCTION LOOP DETECTOR AMPLIFIER WITH CALL DELAY AND CALL CARRY-OVER, DIGITAL DESIGN	EACH	4
88600600	DETECTOR LOOP REPLACEMENT	FOOT	677
89501250	RELOCATE EXISTING TRAFFIC SIGNAL EQUIPMENT	EACH	1
89502200	MODIFY EXISTING CONTROLLER	EACH	1
89502300	REMOVE ELECTRIC CABLE FROM CONDUIT	FOOT	1138
89502385	REMOVE EXISTING CONCRETE FOUNDATION	EACH	1
X4402020	CONCRETE MEDIAN SURFACE REMOVAL	SQ FT	1115
X8760200	ACCESSIBLE PEDESTRIAN SIGNALS	EACH	6
X8760201	PEDESTRIAN PUSH-BUTTON POST	EACH	3
X8950450	REMOVE EXISTING UNDERGROUND CONDUIT	FOOT	48



- DRILL OUT PAVEMENT SEALANT AND CLEAN EXISTING CONDUIT.
- REMOVE EXISTING DETECTOR LOOP WIRES TO HANDHOLE OR GULFBOX.
- INSTALL NEW LOOP LEAD-IN WIRES IN EXISTING CONDUIT.
- SPLICE NEW DETECTOR LOOP WIRES TO EXISTING LOOP LEAD IN CABLE IN HANDHOLE OR GULFBOX.
- FILL HOLE WITH APPROVED SEALER. PREVENT SEALER FROM ENTERING CONDUIT
- LOCATING UNDERGROUND CABLE WILL BE PAID FOR SEPARATELY.

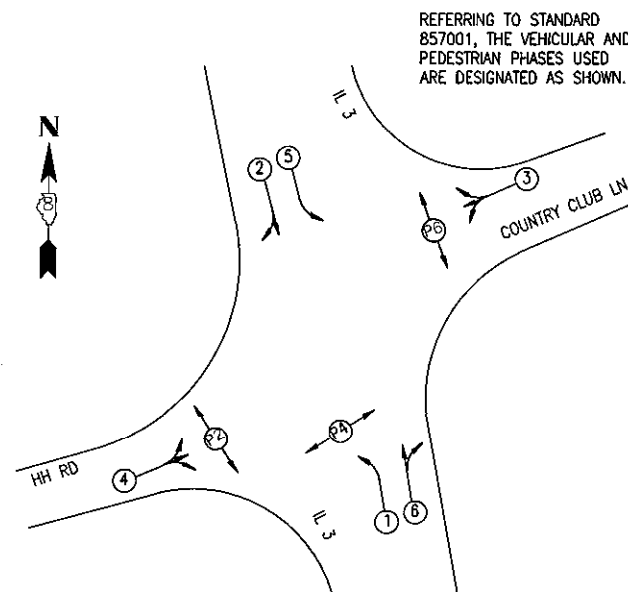
NOT A PAY ITEM. THE COST OF THIS WORK SHALL BE INCLUDED IN THE PAY ITEM "DETECTOR LOOP REPLACEMENT"

EXISTING FULL-ACTUATED CONTROLLER

*EXISTING SEQUENCE OF OPERATION

PHASE	1	2	3	4	5	6	7	8
MOVEMENT	←	← P2	←	← P4	←	← P6	NOT USED	NOT USED
CONCURRENT MOVEMENT PERMITTED	5 OR 6	5 OR 6	NONE	NONE	1 OR 2	1 OR 2		

*SEQUENCE TO REMAIN AS IS, A 6 PHASE.



LOOP	PHASE	LOOP SIZE (FT)	REQUIRED # OF TURNS	CALCULATED INDUCTANCE MICROHENRIES	CALCULATED RESISTANCE OHMS
HH ROAD EB THRU/LT	4	6' X 50' (Q)	3-6-3	814.16	2.230
HH ROAD EB RT	4	6' X 50' (Q)	3-6-3	815.48	2.260
COUNTRY CLUB LANE WB THRU/LT	3	6' X 50' (Q)	3-6-3	858.38	3.235
COUNTRY CLUB LANE WB RT	3	6' X 50' (Q)	3-6-3	858.38	3.235

THE ABOVE VALUES ARE CALCULATED OF COMBINED LOOP AND LEAD-IN INDUCTANCE AND RESISTANCE. ACTUAL MEASURED VALUES SHOULD BE WITHIN +/- 20% OF THESE VALUES

MODEL NAME: 21FILES



USER NAME = \$USERS	DESIGNED - MLS	REVISED -
PLOT SCALE = \$SCALE\$	DRAWN - DCL	REVISED -
PLOT DATE = \$DATE\$	CHECKED - JWS	REVISED -
	DATE - JAN 2022	REVISED -

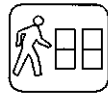
**MONROE COUNTY
HIGHWAY DEPARTMENT**

TRAFFIC SIGNAL GENERAL NOTES, SUMMARY OF QUANTITIES & DETAILS
IL 3/HH RD/COUNTRY CLUB LN

SCALE: NTS SHEET 1 OF 4 SHEETS STA. TO STA.

F.A.P. ROUTE	SECTION	COUNTY	TOTAL SHEETS	SHEET NO.
312	21-00062-04-SW	MONROE	13	10
CONTRACT NO. 97775				
ILLINOIS FED. AID PROJECT				

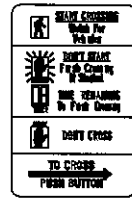
12" X 16" LED



PEDESTRIAN SIGNAL HEADS WITH COUNTDOWN



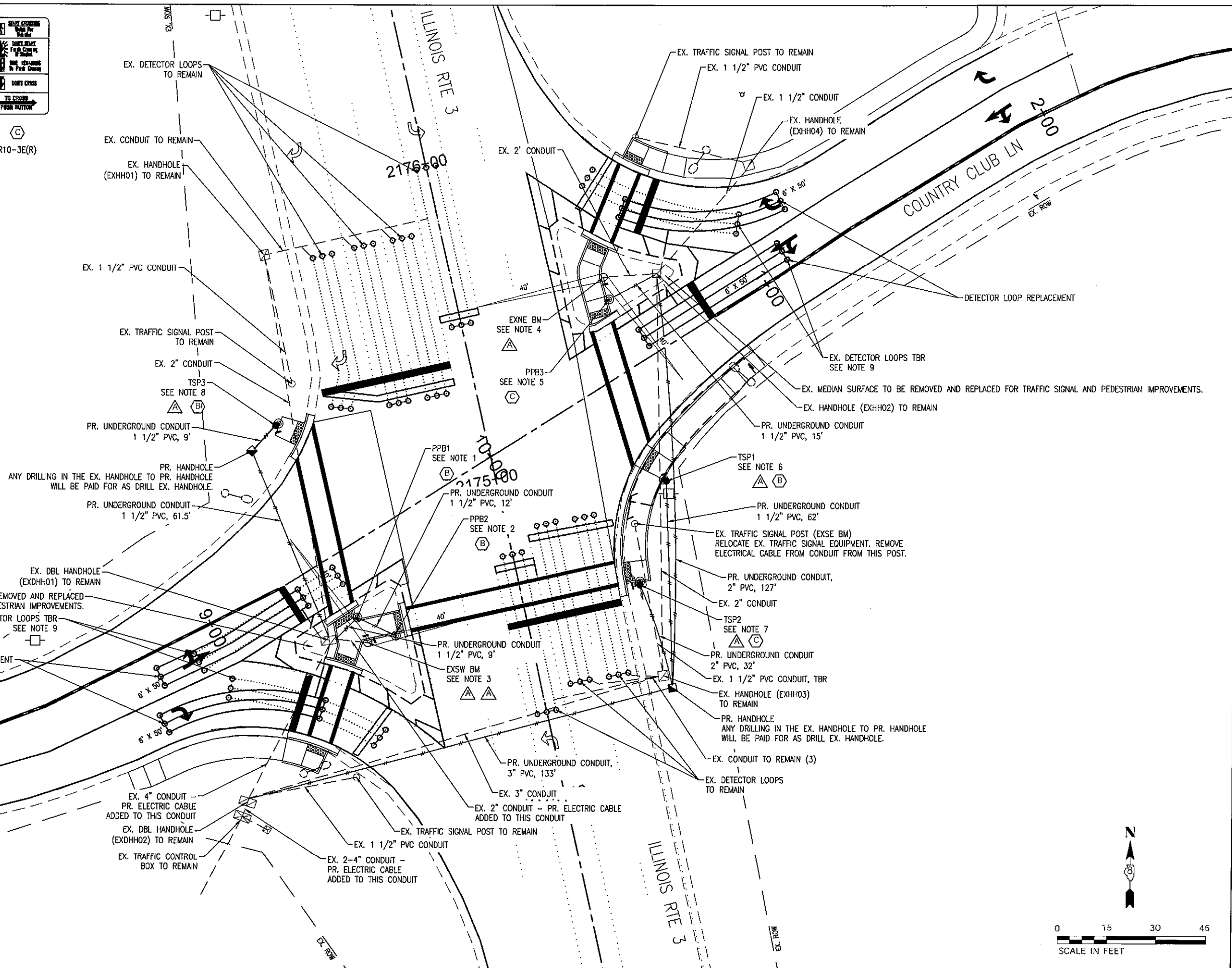
R10-3E(L)



R10-3E(R)

NOTES

1. PPB1. STA. 9+39.02, 20.19' RT. PR. PED. PUSH-BUTTON POST W/ PED. PUSH BUTTON AND CONCRETE FOUNDATION, TY A. ANY DRILLING IN THE EX. HANDHOLE TO PPB1 WILL BE PAID FOR AS DRILL EX. HANDHOLE.
2. PPB2. STA. 2174+59.36, 40.27' LT. PR. PED. PUSH-BUTTON POST W/ PED. PUSH BUTTON AND CONCRETE FOUNDATION, TY A.
3. EXSW BM. EX. MAST ARM TO REMAIN. INSTALL TWO NEW PEDESTRIAN SIGNAL HEADS ON EX. MAST ARM. NECESSARY ELECTRIC CABLE FOR THESE IMPROVEMENTS WILL BE STRUNG IN THE EX. CONDUIT.
4. EXNE BM. EX. MAST ARM TO REMAIN. INSTALL ONE NEW PEDESTRIAN SIGNAL HEAD ON EX. MAST ARM. NECESSARY ELECTRIC CABLE FOR THESE IMPROVEMENTS WILL BE STRUNG IN THE EX. CONDUIT.
5. PPB3. STA. 0+56.59, 21.75' LT. PR. PED. PUSH-BUTTON POST W/ PED. PUSH BUTTON AND CONCRETE FOUNDATION, TY A. ANY DRILLING IN THE EX. HANDHOLE TO PPB3 WILL BE PAID FOR AS DRILL EX. HANDHOLE.
6. TSP1. STA. 0+41.62, 35.16' RT. PR. TRAFFIC SIGNAL POST W/ PED. PUSH BUTTON, PED. SIGNAL HEAD AND CONCRETE FOUNDATION, TY A.
7. TSP2. STA. 2174+58.29, 36.26' RT. RELOCATE EX. TRAFFIC SIGNAL POST (EXSE BM) AND EX. SIGNAL HEADS. INSTALL PR. PED. PUSH BUTTON, PED. SIGNAL HEAD AND CONCRETE FOUNDATION, TY A.
8. TSP3. STA. 9+49.47, 43.50' LT. PR. TRAFFIC SIGNAL POST W/ PED. PUSH BUTTON, PED. SIGNAL HEAD AND CONCRETE FOUNDATION, TY A.
9. THE EX. DETECTOR LOOP WILL BE REMOVED AS NECESSARY TO NOT INTERFERE WITH THE DETECTOR LOOP REPLACEMENT (TY 1). THIS WILL INCLUDE REMOVING THE ELECTRIC CABLE TO THE EX. HANDHOLE TO REMAIN. NO ADDITIONAL COMPENSATION SHALL BE ALLOWED. SEE SPECIAL PROVISIONS FOR ADDITIONAL INFORMATION.
10. PR. CONDUIT UNDER THE PAVEMENT WILL NEED TO BE BORED UNDERNEATH THE PAVEMENT STRUCTURE.



MODEL: SMODELNAMES
FILE NAME: SFILELS



USER NAME = SUSERS	DESIGNED - MLS	REVISED -
DRAWN - DCL	REVISED -	
PLOT SCALE = SSCALE	CHECKED - JWS	REVISED -
PLOT DATE = SDATE	DATE - JAN 2022	REVISED -

MONROE COUNTY
HIGHWAY DEPARTMENT

TRAFFIC SIGNAL PLAN
IL 3/HH RD/COUNTRY CLUB LN

SCALE: 1"=20'

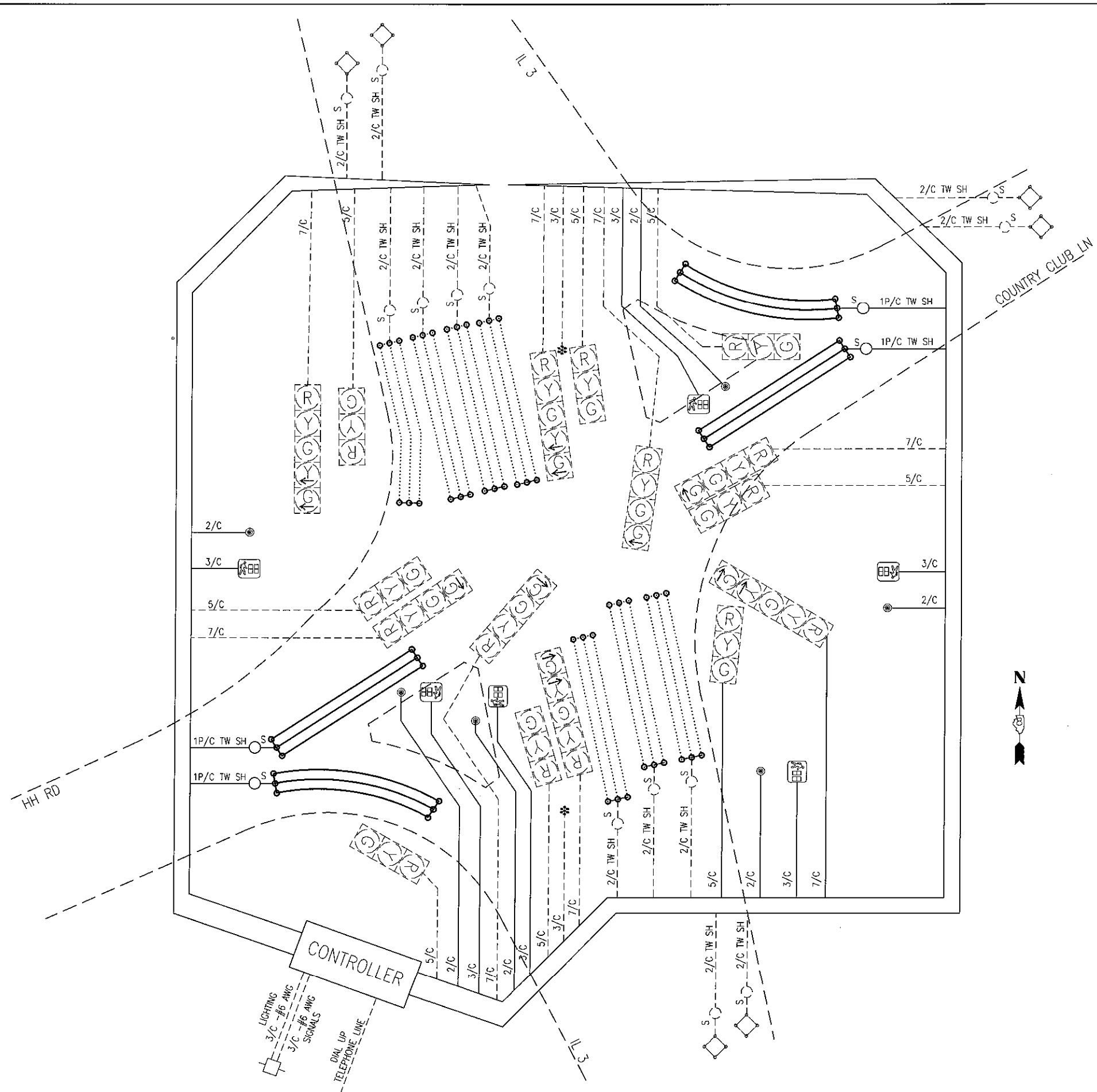
SHEET 2 OF 4 SHEETS STA. TO STA.

F.A.P. ROUTE	SECTION	COUNTY	TOTAL SHEETS	SHEET NO.
312	21-00062-04-SW	MONROE	13	11
CONTRACT NO. 97775				

ILLINOIS FED. AID PROJECT

LEGEND

- EXISTING CABLE
- PROPOSED CABLE
- TW SH INDICATES TWISTED SHIELDED CABLE
- 2/C INDICATES NUMBER OF CONDUCTORS IN CABLE
- ⊠ EXISTING CONTROLLER
- ⊙ PROPOSED PEDESTRIAN PUSH-BUTTON
- ⊠ BE PROPOSED PEDESTRIAN SIGNAL HEAD
- ⊠ G EXISTING 12" TRAFFIC SIGNAL SECTION. LETTER INDICATES COLOR.
- ⋯ EXISTING DETECTOR LOOP, CD INDICATES CALL DELAY
- ⋯ PROPOSED DETECTOR LOOP, CD INDICATES CALL DELAY
- * ILLUMINATED "LEFT TURN YIELD" SIGN (FUTURE)



USER NAME - \$USERS	DESIGNED - MLS	REVISED -
DRAWN - DCL	CHECKED - JWS	REVISED -
DATE - JAN 2022	REVISIONS	

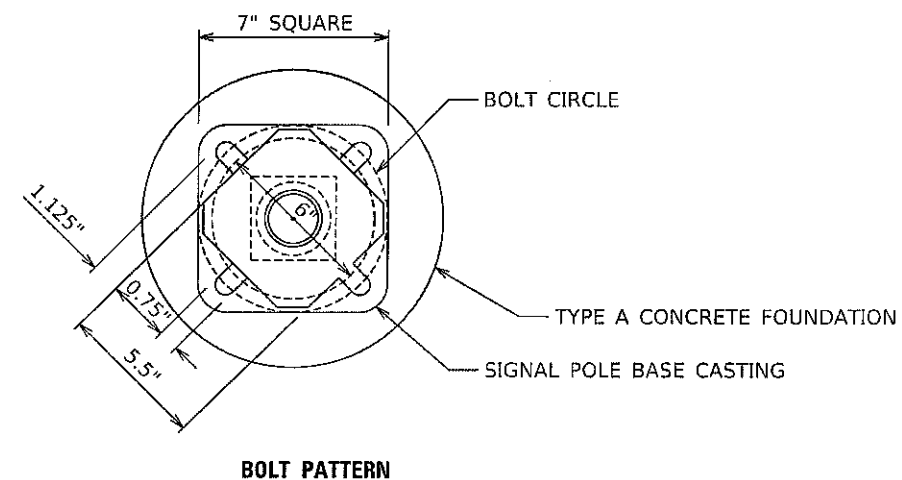
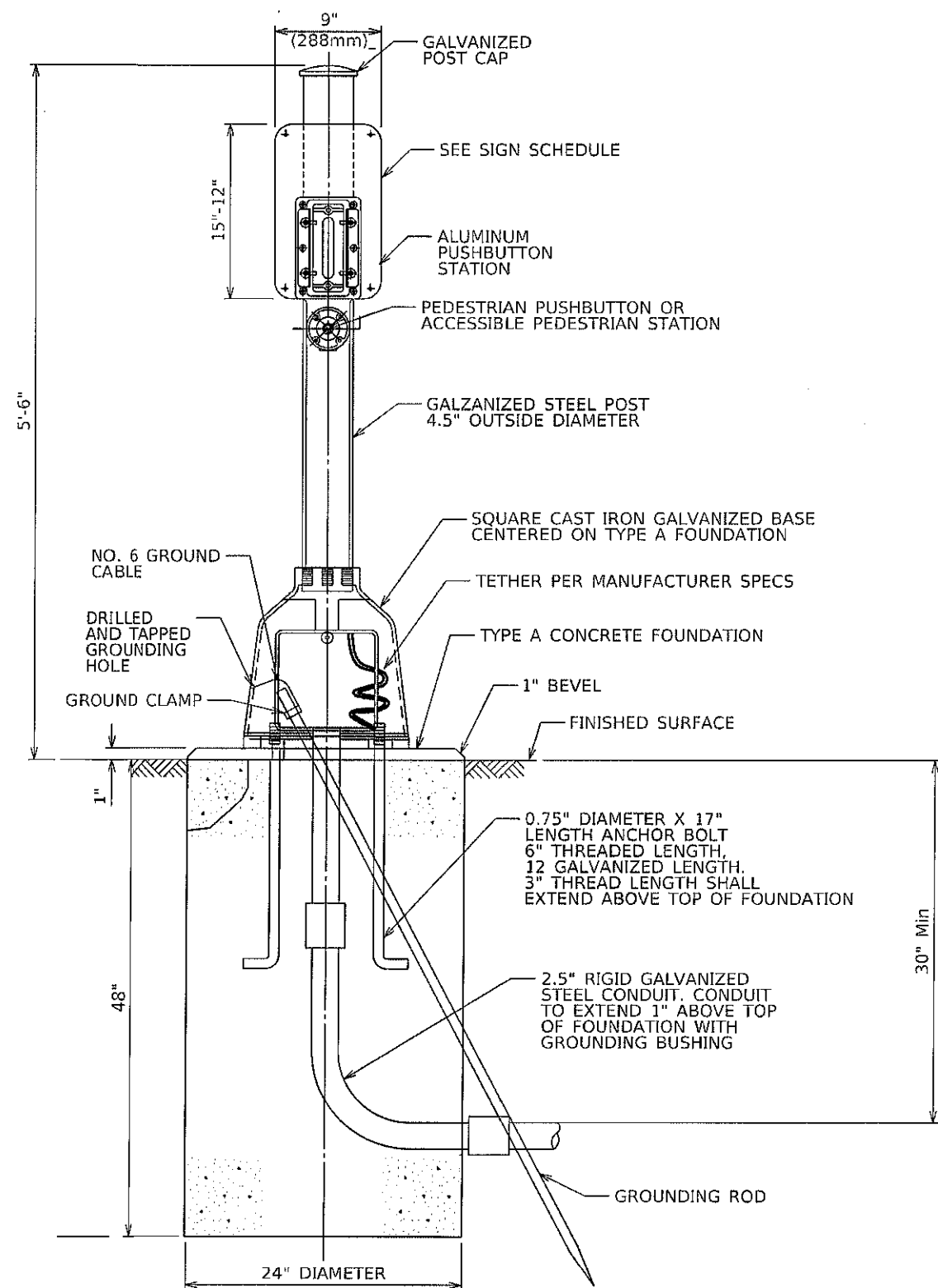
**MONROE COUNTY
HIGHWAY DEPARTMENT**

**TRAFFIC SIGNAL CABLE DIAGRAM
IL 3/HH RD/COUNTRY CLUB LN**

SCALE: NTS SHEET 3 OF 4 SHEETS STA. TO STA.

F.A.P. ROUTE	SECTION	COUNTY	TOTAL SHEETS	SHEET NO.
312	21-00062-04-SW	MONROE	13	12
CONTRACT NO. 97775				
ILLINOIS FED. AID PROJECT				

MODEL: SNOIDELMAMES
FILE NAME: 8F1E15



MODEL: SIGNALNAVES
FILE NAME: 311E15



USER NAME - \$USERS	DESIGNED - MLS	REVISED -
PLOT SCALE - \$SCALE\$	DRAWN - DCL	REVISED -
PLOT DATE - \$DATE\$	CHECKED - JWS	REVISED -
	DATE - JAN 2022	REVISED -

MONROE COUNTY
HIGHWAY DEPARTMENT

TRAFFIC SIGNAL DETAILS - PEDESTRIAN PUSH-BUTTON
IL 3/HH RD/COUNTRY CLUB LN

SCALE: NTS SHEET 4 OF 4 SHEETS STA. TO STA.

F.A.P. ROUTE	SECTION	COUNTY	TOTAL SHEETS	SHEET NO.
312	21-00062-04-SW	MONROE	13	13
CONTRACT NO. 97775				
ILLINOIS FED. AID PROJECT				