

STATE OF ILLINOIS
DEPARTMENT OF TRANSPORTATION

F.A.P. RTE.	SECTION	COUNTY	TOTAL SHEETS	SHEET NO.
681	2022-1 VEGETATION CONTROL	IROQUOIS	4	1
		ILLINOIS	CONTRACT NO. 66M61	

INDEX OF SHEETS

1	COVER SHEET
2	GENERAL NOTES
3	SUMMARY OF QUANTITIES
4	NATIVE PLANTING PLAN

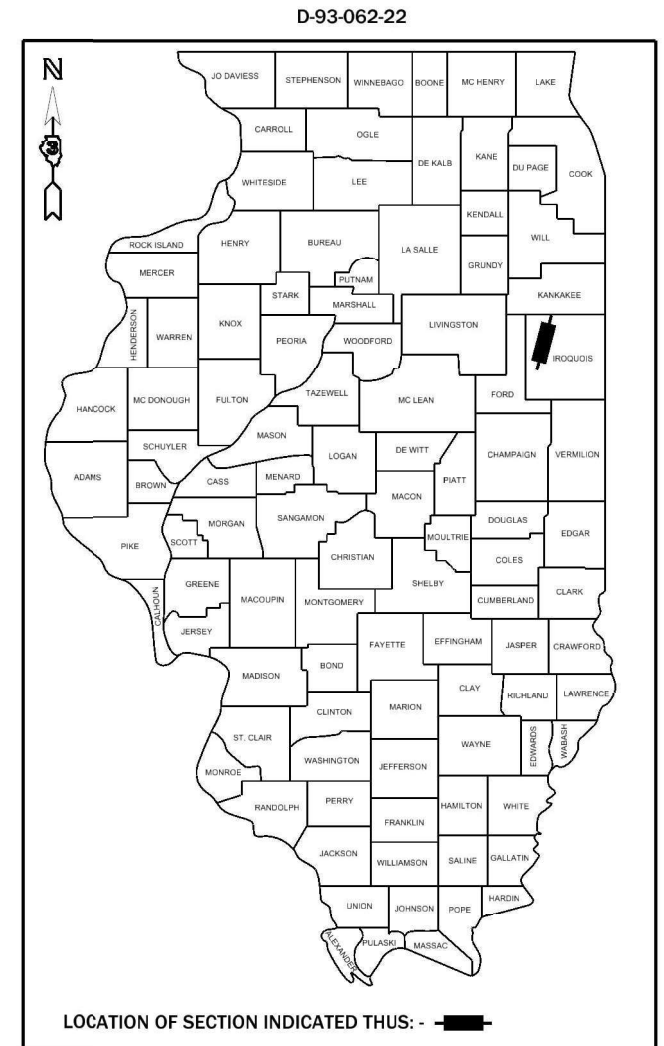
LIST OF ILLINOIS DOT HIGHWAY STANDARDS

000001-08	STANDARD SYMBOLS, ABBREVIATIONS AND PATTERNS
001006	DECIMAL OF AN INCH AND OF A FOOT
701001-02	OFF-ROAD OPERATIONS 2L, 2W, MORE THAN 15' (4.5 m) AWAY
701006-05	OFF-ROAD OPERATIONS 2L, 2W, 15' (4.5 m) TO 24" (600 mm) FROM PAVEMENT EDGE
701011-04	OFF-ROAD MOVING OPERATIONS 2L, 2W, DAY ONLY
701201-05	LANE CLOSURE, 2L, 2W, DAY ONLY, FOR SPEEDS ≥ 45 MPH
701901-08	TRAFFIC CONTROL DEVICES

PROPOSED HIGHWAY PLANS

FAP 681 (IL 116)
SECTION 2022-1 VEGETATION CONTROL
PROJECT STATE
NATIVE PLANTING
IROQUOIS COUNTY

C-93-084-22



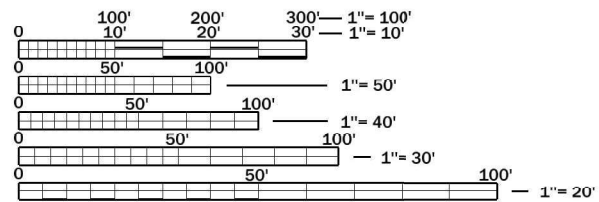
FUNCTIONAL CLASSIFICATION:
MINOR ARTERIAL
2019 IL 116 ADT=1,650 SU=11.2% MU=15.2%

STATE OF ILLINOIS
DEPARTMENT OF TRANSPORTATION

SUBMITTED March 28 20 22
[Signature]
REGIONAL ENGINEER

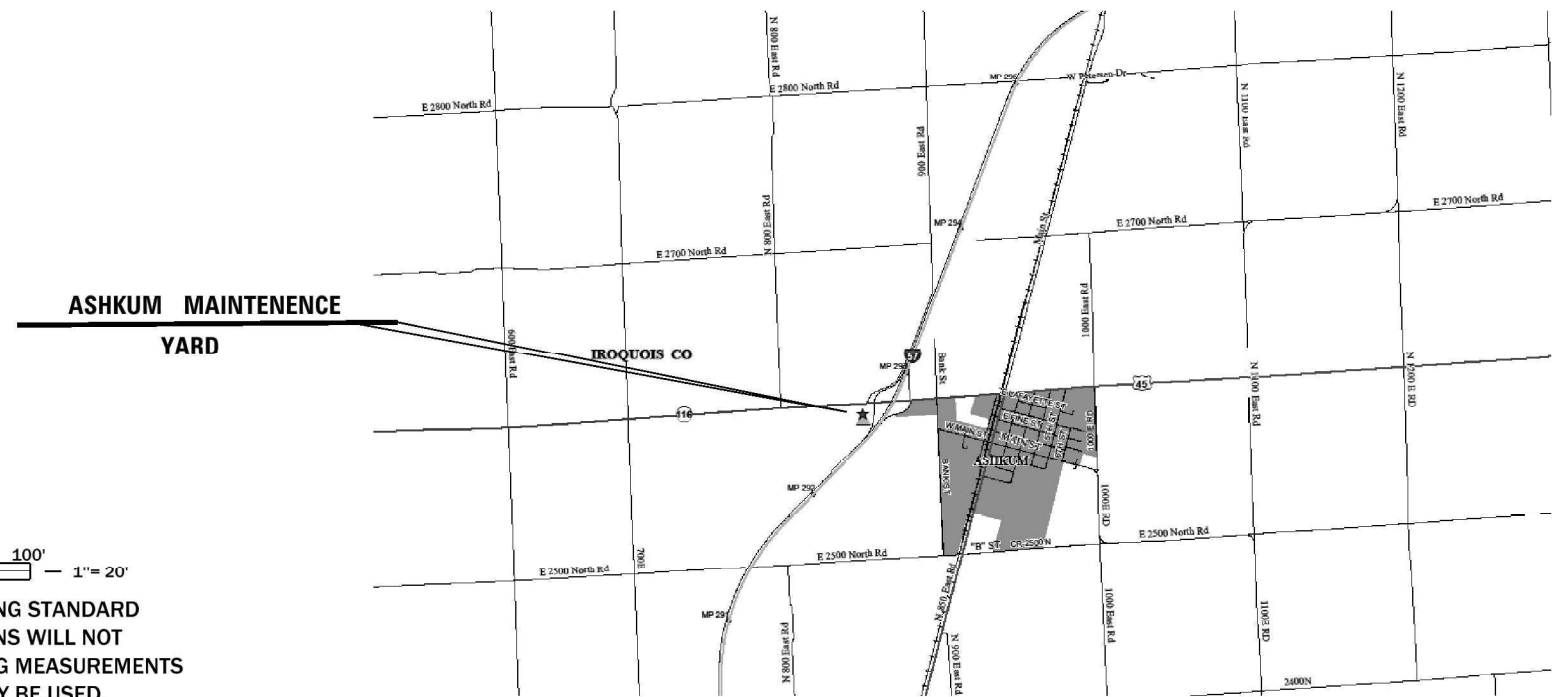
May 13, 2022
[Signature]
ENGINEER OF DESIGN AND ENVIRONMENT

May 13, 2022
[Signature]
DIRECTOR OF HIGHWAYS PROJECT IMPLEMENTATION



FULL SIZE PLANS HAVE BEEN PREPARED USING STANDARD ENGINEERING SCALES. REDUCED SIZED PLANS WILL NOT CONFORM TO STANDARD SCALES. IN MAKING MEASUREMENTS ON REDUCED PLANS, THE ABOVE SCALES MAY BE USED.

J.U.L.I.E.
JOINT UTILITY LOCATION INFORMATION FOR EXCAVATION
1-800-892-0123
OR 811



LOCATION MAP NOT TO SCALE

PROJECT ENGINEER: JACOB OYIER, P.E.
UNIT CHIEF: STEPHENIE CARMIN
DISTRICT 3 NO. (815) 434-6131
CONTRACT NO. 66M61

**PRINTED BY THE AUTHORITY
OF THE STATE OF ILLINOIS**

GENERAL NOTES

SEEDING WILL NOT BE PERMITTED AT ANY TIME WHEN THE GROUND IS FROZEN, WET, OR IN AN UNTILLABLE CONDITION. LOCATIONS TO BE SEEDED WILL BE DETERMINED BY THE ENGINEER.

ALL EXCAVATED MATERIAL, WHICH INCLUDES DIGGING OR GRADING OF ANY SOIL OR FILL MATERIAL, WITH THE EXCEPTION OF AGGREGATE FILLS, MUST BE INCORPORATED WITHIN THE PROJECT LIMITS DUE TO ENVIRONMENTAL DOCUMENTATION REQUIREMENTS.

ANY REFERENCE TO A STANDARD IN THESE PLANS SHALL BE INTERPRETED TO MEAN THE EDITION AS INDICATED BY THE SUBNUMBER SHOWN IN THE LIST OF STANDARDS OR THE COPY INCLUDED IN THESE PLANS.

THE FOLLOWING RATES OF APPLICATION HAVE BEEN USED IN CALCULATING PLAN QUANTITIES:

Ashkum Maintenance Yard Site		
Product	Application Rate	
Gypsum	40.00	Lbs/1,000 SF
Milorganite	12.00	Lbs/1,000 SF
MAP (11-52-0)	4.00	Lbs/1,000 SF
SOP (0-0-50)	4.00	Lbs/1,000 SF

Non-Selective Herbicide Mixture - Broadcast Spray Application #1		
Product	Application Rate	
RoundUp Custom	96.00	Ounces/Acre
Nonionic Surfactant	9.60	Ounces/Acre
Blue Spray Pattern Indicator	15.00	Ounces/Acre
Water	30.00	Gallons/Acre Minimum

Broadleaf Selective Herbicide Mixture - Spot Spray Application #1		
Product	Application Rate	
Milestone	0.35	Ounces/Gallon of Solution
Transline	0.50	Ounces/Gallon of Solution
Nonionic Surfactant	0.32	Ounces /Gallon of Solution
Blue Spray Pattern Indicator	1.00	Ounces/Gallon of Solution
Water	1.00	Gallon

Non-Selective Herbicide Mixture - Broadcast Spray Application #2		
Product	Application Rate	
RoundUp Custom	96.00	Ounces/Acre
Nonionic Surfactant	9.60	Ounces/Acre
Blue Spray Pattern Indicator	15.00	Ounces/Acre
Water	30.00	Gallons/Acre Minimum

Seeding of Prairie Seed Mix for Mesic Soils (Non-Sandy Soils)		
Product	Application Rate	
Specified PLS Seed Mix	289.63	Ounces/Acre
ReGreen Cover Crop	20.00	Lbs/Acre
Mychorizal Inoculant	40.00	Lbs/Acre
Rhizobial Inoculant	TBD	Ounces/Acre

THE CONTRACTOR'S ATTENTION IS DIRECTED TO THE PRESENCE OF DEPARTMENT-OWNED UNDERGROUND ELECTRICAL CABLE WITHIN THE LIMITS OF THE PROPOSED IMPROVEMENT. THE CONTRACTOR SHALL REQUEST THE ILLINOIS DEPARTMENT OF TRANSPORTATION IN ASHKUM (815-698-2223) TO LOCATE THE UNDERGROUND FACILITIES, PROVIDING A MINIMUM OF 72 HOURS NOTICE. THE DEPARTMENT IS NOT A MEMBER OF THE JOINT UTILITY LOCATING INFORMATION FOR EXCAVATORS (JULIE) SYSTEM.

ALL DAMAGE TO DEPARTMENT OWNED UNDERGROUND FACILITIES, CAUSED BY THE CONTRACTOR SHALL BE REPAIRED TO THE SATISFACTION OF THE DEPARTMENT AT THE CONTRACTOR'S EXPENSE. THIS SHALL INCLUDE ALL TEMPORARY REPAIRS REQUIRED TO KEEP THE FACILITY OPERATIONAL WHILE MATERIAL IS BEING OBTAINED TO MAKE PERMANENT REPAIRS. SPLICING OF ELECTRIC CABLE WILL NOT BE ALLOWED. ELECTRIC CABLE SHALL BE REPLACED FROM POLE TO POLE OR CONTROLLER.

MEMBERS OF JULIE KNOWN TO BE WITHIN THE LIMITS OF THE IMPROVEMENT ARE: NICOR GAS, FRONTIER, EASTERN ILLINI ELECTRIC, AND THE STATE OF ILLINOIS.

THE CONTRACTOR SHALL CONTACT JULIE AT LEAST 48 HOURS PRIOR TO EXCAVATION TO DETERMINE WHICH UTILITIES ARE IN THE AREA.

STATE OF ILLINOIS
DEPARTMENT OF TRANSPORTATION
DISTRICT THREE
AS BUILT INFORMATION

SUPERVISING CONSTRUCTION FIELD ENGINEER

RESIDENT ENGINEER / TECHNICIAN

START & END DATES
OF CONSTRUCTION:

INSPECTORS:

STATE OF ILLINOIS
DEPARTMENT OF TRANSPORTATION
DISTRICT THREE

PREPARED BY: _____
DISTRICT STUDIES & PLANS ENGINEER

DATE: _____

EXAMINED BY: _____
DISTRICT CONSTRUCTION ENGINEER

DISTRICT MATERIALS ENGINEER

DISTRICT OPERATIONS ENGINEER

STATE OF ILLINOIS
DEPARTMENT OF TRANSPORTATION

GENERAL NOTES

F A P RTE.	SECTION	COUNTY	TOTAL SHEETS	SHEET NO.
681	2022-1 VEGETATION CONTROL	IROQUOIS	4	2
CONTRACT NO. 66M61				
ILLINOIS FED. AID PROJECT				

SCALE: _____ SHEET ____ OF ____ SHEETS STA. _____ TO STA. _____

MODEL: Default
FILE NAME: P:\11\1101-pw_bentley.com\PROJECTS\DOT_Office\District_3\Project\66M61\CAD\66M61.dwg-shr-cover.dgn

MODEL: D:\r\it
 FILE NAME: P:\w\dot-pw\beetley.com\FWIDOT\Documents\DOT_Offices\District_3\Projects\66M61\CAD\Drawn\366M61_sht-500.dgn

CODE NO.	ITEM	UNIT	TOTAL QUANTITY	CONSTR. CODE
				FUND CODE 07A0
				100% STATE
				ROADWAY
				0031
				RURAL
67100100	MOBILIZATION	L SUM	1	1
K1006756	WILDFLOWER SEEDING (SPECIAL)	ACRE	3	3
X2511630	EROSION CONTROL BLANKET (SPECIAL)	SQ YD	9680	9680

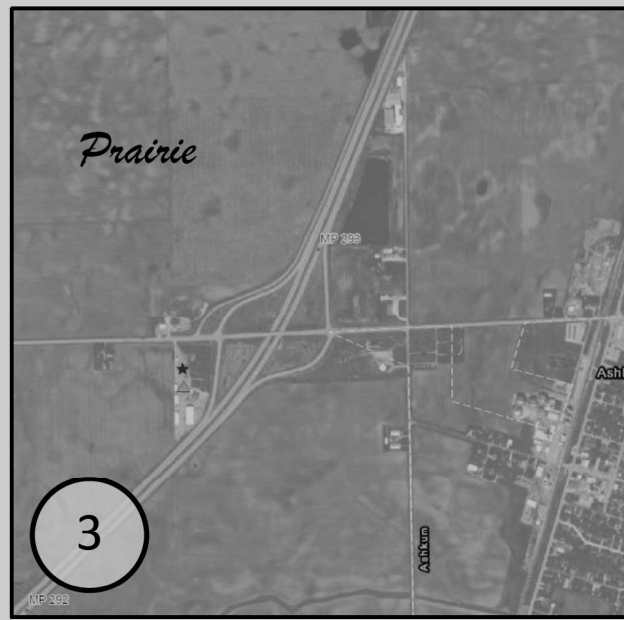
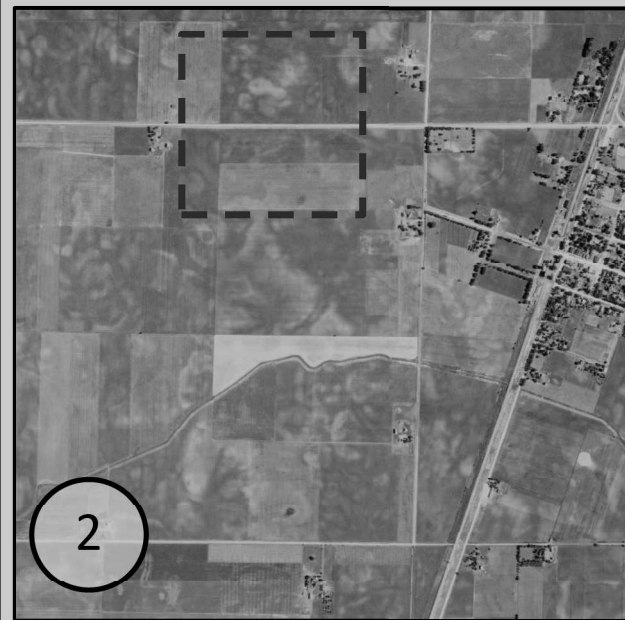
USER NAME = carminsa	DESIGNED - _____	REVISED - _____
	DRAWN - _____	REVISED - _____
PLOT SCALE = 50.9331' / in.	CHECKED - _____	REVISED - _____
PLOT DATE = 3/26/2022	DATE - _____	REVISED - _____

**STATE OF ILLINOIS
 DEPARTMENT OF TRANSPORTATION**

SCHEDULE OF QUANTITIES

SCALE: _____ SHEET ___ OF ___ SHEETS STA. _____ TO STA. _____

F.A.P. RTE.	SECTION	COUNTY	TOTAL SHEETS	SHEET NO.
168	2022-1 VEGETATION CONTROL	IROQUOIS	4	3
CONTRACT NO. 66M61				
ILLINOIS FED. AID PROJECT				



Soil	Drainage	Vegetation
69 – Milford silty clay loam	Poorly Drained; Frequent Ponding; Hydric; Moderately Slow Permeability	Marsh Grasses and Sedges; Wet Glacial Drift Upland Prairie 93%; Pondered Depressional Sedge Meadow 5%
146 – Elliott silt loam	Somewhat poorly drained; No ponding; Slow Permeability	Prairie Grass; Moist Glacial Drift Upland Prairie 94%; Pondered Depressional Sedge Meadow 4%
189 – Martinton silt loam	Somewhat poorly drained; No ponding; Moderately Slow Permeability	Prairie Grass; Moist Glacial Drift Upland Prairie 92%; Wet Glacial Drift Upland Prairie 4%
235 – Bryce Silty clay	Poorly drained; Frequent Ponding; Hydric; Very Slow Permeability	Marsh Grasses and Sedges; Wet Glacial Drift Upland Prairie 95%; Pondered Depressional Sedge Meadow 2%
238 – Rantoul silty clay	Very Poorly Drained; Frequent Ponding; Hydric; Very Slow Permeability	Marsh Grasses and Sedges; Pondered Depressional Sedge Meadow 100%

I-57 Exit 293 Interchange

Ashkum Maintenance Yard

County: Iroquois

Team Section: 323-Ashkum

Drawn By: Andy Stahr

Native Planting Plan

1 – Aerial Photo 04/2017:

Google Earth accessed 10/26/2021

2 – 1940 Aerial Photo:


GIS Clearinghouse accessed 10/26/2021

3 – 1800 Land Plats of Illinois

(Historic Vegetation Map): IDOT GIS accessed 10/26/2021

4 – Soil Map:

Web Soil Survey accessed 10/26/2021

 Mesic Prairie Seed (1.5 Acres)

02/19/2022



District 3 – 700 E Norris Drive, Ottawa, IL 61350
Bureau of Operations – (815) 434-8445

MODEL: Default; FILE: \\nas101.pw.bentley.com\P\IDOT\Documents\IDOT Office\District 3\Project\32366M6\1-Sub-Ashkum Planting - Plan.dgn

USER NAME = carmlnsa	DESIGNED -	REVISED -
	DRAWN -	REVISED -
PLOT SCALE = 100,0000' / in.	CHECKED -	REVISED -
PLOT DATE = 3/26/2022	DATE -	REVISED -

STATE OF ILLINOIS
DEPARTMENT OF TRANSPORTATION

NATIVE PLANTING PLAN

SCALE: SHEET OF SHEETS STA. TO STA.

F.A.P. RTE.	SECTION	COUNTY	TOTAL SHEETS	SHEET NO.
681	2022-2 VEGETATION CONTROL	IROQUOIS	4	4
			CONTRACT NO. 66M61	
		ILLINOIS	FED. AID PROJECT	