

06-17-2022 LETTING ITEM 176  
 FOR INDEX OF SHEETS, SEE SHEET NO. 2  
 FOR SUMMARY OF QUANTITIES, SEE SHEET NO. 3

STATE OF ILLINOIS  
 DEPARTMENT OF TRANSPORTATION

FAI RTE.	SECTION	COUNTY	TOTAL SHEETS	SHEET NO.
55		MCLEAN	4	1
		ILLINOIS	CONTRACT NO. 46597	

D5 GRDRL DELIN MAINT INT 23-07

TRAFFIC DATA

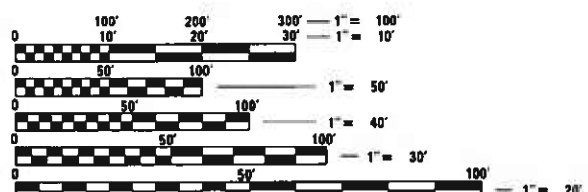
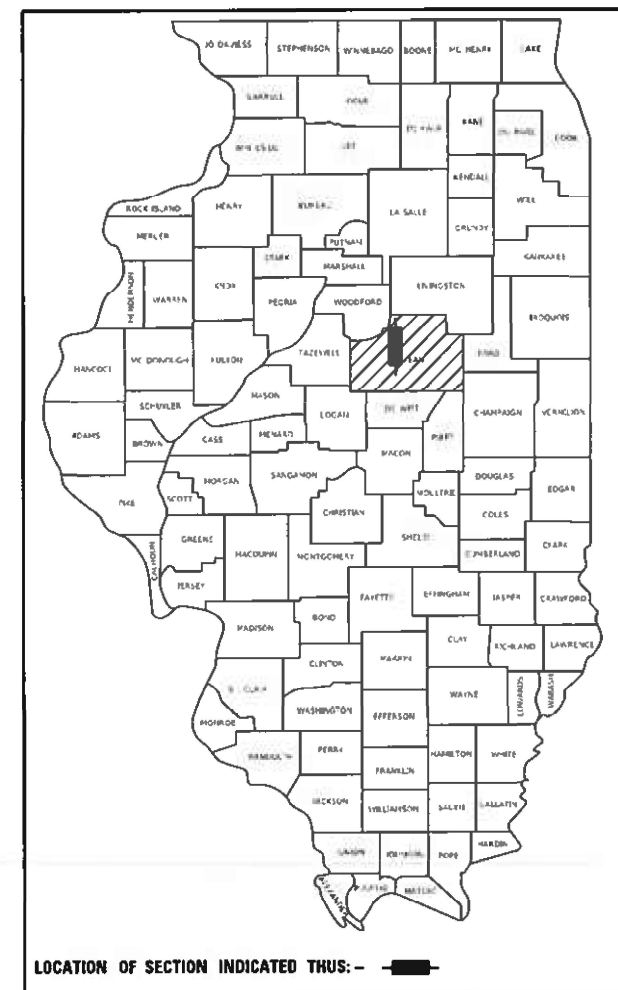
FAI RTE. 55 (I-55)	
2022 ADT =	37,300
PV % =	66.40%
SU % =	3.60%
MU % =	30.00%
FUNCTIONAL CLASSIFICATION	
INTERSTATE	

PROPOSED  
 HIGHWAY PLANS

FAI ROUTE 55 (I-55)  
 SECTION D5 GRDRL DELIN MAINT INT 23-07  
 MISCELLANEOUS  
 MCLEAN COUNTY

M-60-007-23

NW OF NORMAL NEAR I-55-74 SPLIT

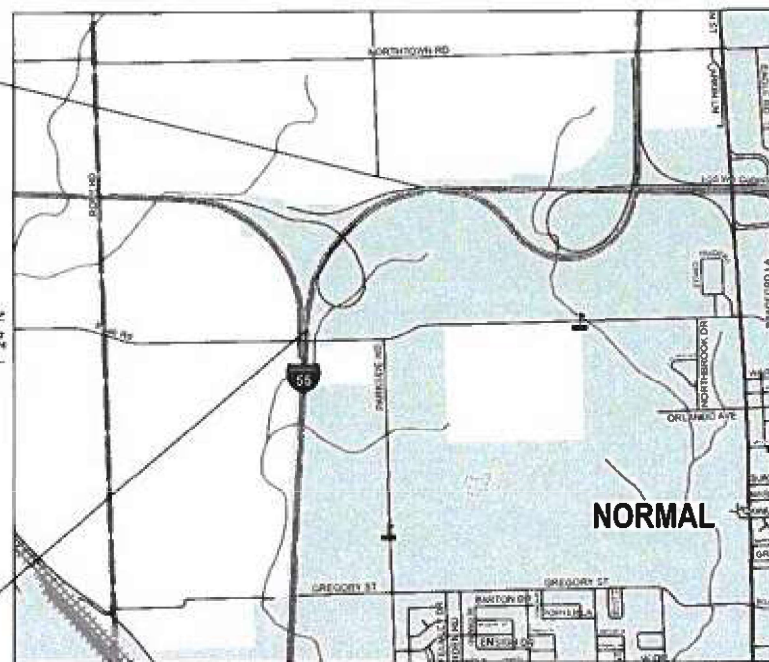


FULL SIZE PLANS HAVE BEEN PREPARED USING STANDARD ENGINEERING SCALES. REDUCED SIZED PLANS WILL NOT CONFORM TO STANDARD SCALES. IN MAKING MEASUREMENTS ON REDUCED PLANS, THE ABOVE SCALES MAY BE USED.

J.U.L.I.E.  
 JOINT UTILITY LOCATION INFORMATION FOR EXCAVATORS  
 1-800-892-0123 TOWNSHIPS  
 OR 811 NORMAL

END SECTION  
 D5 GRDRL DELIN MAINT INT 23-07  
 STA. 255+00.00

BEGIN SECTION  
 D5 GRDRL DELIN MAINT INT 23-07  
 STA. 300+00.00



GROSS LENGTH = 4,500.00 FT. = 0.852 MILE  
 NET LENGTH = 4,500.00 FT. = 0.852 MILE

PROJECT ENGINEER: RYAN T. CARROLL  
 DESIGNER: TYLER J. PIERSON  
 PHONE: (217)-465-4181  
 CONTRACT NO. 46597

STATE OF ILLINOIS  
 DEPARTMENT OF TRANSPORTATION

SUBMITTED 3/15 2022  
Kenneth A. Blomquist SEN  
 REGIONAL ENGINEER

May 13, 2022 [Signature]  
 ENGINEER OF DESIGN AND ENVIRONMENT

May 13, 2022 [Signature]  
 DIRECTOR OF HIGHWAYS PROJECT IMPLEMENTATION

PRINTED BY THE AUTHORITY  
 OF THE STATE OF ILLINOIS

## INDEX OF SHEETS

<u>DESCRIPTION</u>	<u>SHEET NO.</u>
COVER	1
INDEX OF SHEETS, LIST OF HIGHWAY STANDARDS, & COMMITMENTS	2
SUMMARY OF QUANTITIES	3
SHOULDER CLOSURE TRAFFIC CONTROL DETAIL	4

## LIST OF STANDARDS

<u>STANDARD NO.</u>	<u>DESCRIPTION</u>
000001-08	STANDARD SYMBOLS, ABBREVIATIONS AND PATTERNS
001006	DECIMAL OF AN INCH AND OF A FOOT
701101-05	OFF-ROAD OPERATIONS, MULTILANE, 15' (4.5 M) TO 24" (600 MM) FROM PAVEMENT
701400-11	APPROACH TO LANE CLOSURE, FREEWAY/EXPRESSWAY
701426-09	LANE CLOSURE, MULTILANE, INTERMITTENT OR MOVING OPERATION, FOR SPEEDS > 45 MPH
701901-08	TRAFFIC CONTROL DEVICES

## GENERAL NOTES

G.N.-100A  
ELECTRONIC FILES AND/OR ELECTRONIC SURVEY INFORMATION INCLUDING CADD FILES WILL NOT BE AVAILABLE TO THE CONTRACTOR.

## COMMITMENTS

THERE ARE NO COMMITMENTS FOR THIS CONTRACT

MODEL: \\MODEL\MNMF  
FILE NAME: \\PUB\cpx\bea\p\p\DOT\Documents\DOT Office\Dir\dir: S\Project\0546597\CaddData\Caddsheet\0546597-2\ht-index, List of Standards, General Notes, and Commitments.dgn

USER NAME = PiersonJ	DESIGNED -	REVISED -
	DRAWN -	REVISED -
PLOT SCALE = 40,0000 * / in.	CHECKED -	REVISED -
PLOT DATE = 3/15/2022	DATE -	REVISED -

**STATE OF ILLINOIS  
DEPARTMENT OF TRANSPORTATION**

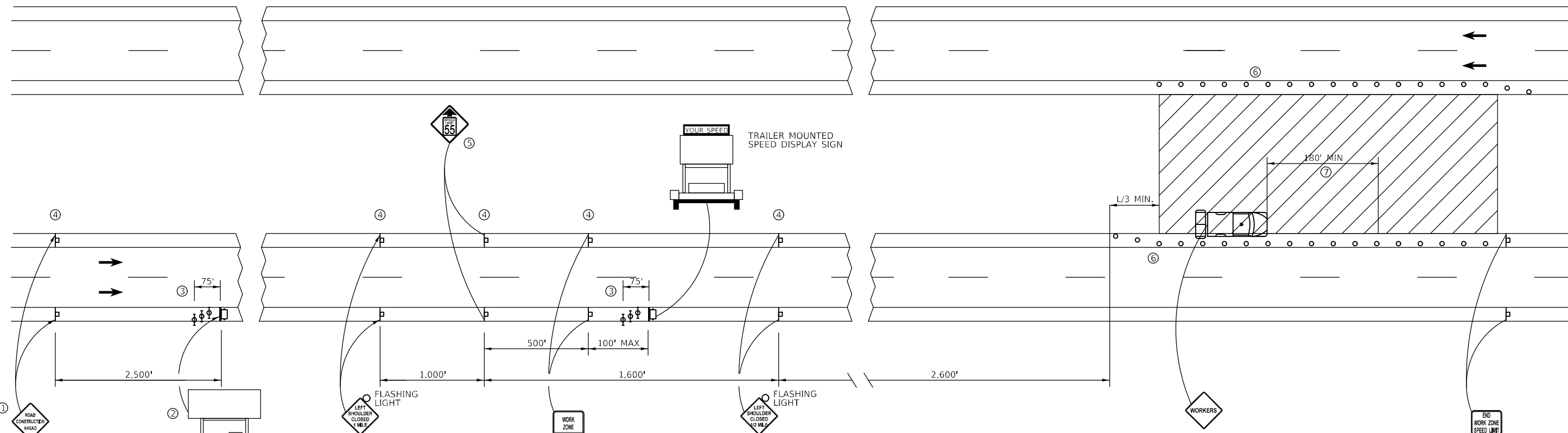
**INDEX OF SHEETS, GENERAL NOTES,  
LIST OF STANDARDS, AND COMMITMENTS**

SCALE: SHEET 1 OF 1 SHEETS STA. TO STA.

F.A.I. RTE.	SECTION	COUNTY	TOTAL SHEETS	SHEET NO.
55	*	MCLEAN	4	2
			CONTRACT NO. 46597	
		ILLINOIS	FED. AID PROJECT	



MODEL: \\MODELNAME  
 FILE: \\NAME.dwg  
 PROJECT: \\PROJECTNAME  
 USER: \\USER  
 DATE: 3/15/2022



**NOTES**

PORTABLE CHANGEABLE MESSAGE SIGN

- ① THE ROAD CONSTRUCTION AHEAD SIGN SHALL BE LOCATED 3 MILES IN ADVANCE OF THE PROJECT LIMITS.
- ② THE MESSAGE BOARD SHALL BE USED TO DISPLAY STATUS OF LANES WITHIN THE PROJECT. THE PRIMARY MESSAGE SHALL BE: "LEFT SHOULDER CLOSED" / "X MILES AHEAD"
- ③ THREE, TYPE II BARRICADES, DRUMS, OR VERTICAL BARRICADES AT 25' CENTERS.
- ④ THIS SIGN SHALL BE OMITTED WHEN MEDIAN WIDTH IS LESS THAN 10'.
- ⑤ THIS SIGN SHALL ONLY BE USED IF THE EXISTING SPEED LIMIT IS GREATER THAN 65 MPH.
- ⑥ CONES, DRUMS, OR BARRICADES SHALL BE PLACED AT 25' CENTERS FOR 1/3 DISTANCE IN THE TAPER AND AT 50' CENTERS THROUGH THE REMAINDER OF THE WORK ZONE.
- ⑦ THE DISTANCE BETWEEN THE WORK AND THE TMA SHALL BE A MINIMUM OF 180'.

**SYMBOLS**

- ↑ ARROW BOARD
- ☐ TRAILER MOUNTED SIGN
- ☐ SIGN
- ☐ TYPE II BARRICADE, DRUM, OR VERTICAL BARRICADE WITH MONODIRECTIONAL FLASHING LIGHT
- CONE, DRUM, OR BARRICADE
- ☐ TRUCK WITH FLASHING AMBER LIGHT
- ☐ TRUCK/TRAILER MOUNTED ATTENUATOR

WORK ZONE

**GENERAL NOTES**

CALCULATE L AS FOLLOWS:  
 SPEED LIMIT FORMULAS  
 40 MPH OR LESS:  $L = \frac{WS^2}{60}$   
 45 MPH OR GREATER:  $L = (W)(S)$   
 W = WIDTH OF OFFSET IN FEET.  
 S = NORMAL POSTED SPEED IN MPH.

ALL DIMENSIONS ARE IN INCHES UNLESS OTHERWISE SHOWN.

USER NAME = Piersontj	DESIGNED -	REVISED -
PLOT SCALE = 40,0000 * / in.	DRAWN -	REVISIED -
PLOT DATE = 3/15/2022	CHECKED -	REVISIED -
	DATE -	REVISIED -

**STATE OF ILLINOIS  
 DEPARTMENT OF TRANSPORTATION**

**SHOULDER CLOSURE  
 TRAFFIC CONTROL DETAIL**

SCALE: N.T.S. SHEET 1 OF 1 SHEETS STA. TO STA.

F.A.I. RTE. 55	SECTION *	COUNTY MCLEAN	TOTAL SHEETS 4	SHEET NO. 4
			CONTRACT NO. 46597	
ILLINOIS FED. AID PROJECT				