



Illinois Department of Transportation

Office of Intermodal Project Implementation / Division of Aeronautics
1 Langhorne Bond Drive / Springfield, Illinois 62707-8415

June 3, 2022

SUBJECT: Quincy Regional Airport
Quincy, Illinois
Adams County
Illinois Project Number: UIN-5025
AIP Project Number: N/A
Contract No. QI065
Item No. 06A, June 17, 2022 Letting
Addendum A

NOTICE TO PROSPECTIVE BIDDERS

Attached is an addendum to the plans or proposal. This addendum involves revised and/or added material.

Reason for Addendum:

Provide end area earthwork calculations for landside improvements.

To All Plan Holders:

Changes to the Bidding Documents in this change order include:

1. Add cross section sheets with end area calculations for the landside improvements.
2. Adjust quantity of Unclassified Excavation.

Plan Changes:

1. REVISE QUANTITY: Sheet 2, Pay Item AR152410, from 19,250 cy to 27,600 cy.
2. REMOVE: Sheets 49 and 50.
3. ADD: Sheets 49 – 55 (attached).

Special Provisions Changes:

No Changes

Schedule of Prices Changes:

1. Increase quantity of pay Item AR152410 Unclassified Excavation from 19,250 cubic yards to 27,600 cubic yards.

Prime contractors must utilize the enclosed material when preparing their bid and must include any changes to the Schedule of Prices in their bid.

Questions on this addendum may be directed to Wes loerger of CMT at 217-787-8050.

Attachments

- Revised Sheet 2
- Revised Sheets 49-55

BID SUBMITTAL
APRIL 22, 2022

CONSTRUCT AIRPORT
GENERAL AVIATION APRON &
ROADWAY

OWNER



CITY OF QUINCY
QUINCY REGIONAL AIRPORT
QUINCY, IL

| | | |
|---|--------|------------|
| A | 6/3/22 | ADDENDUM A |
|---|--------|------------|

| MARK | DATE | DESCRIPTION |
|------|------|-------------|
| | | |

AIP PROJ. NO: N/A

IL PROJ. NO: UIN-5025

CMT PROJECT NO: 19002002

CAD DWG FILE: 190020-02 GI002.DWG

DESIGNED BY: HWI

DRAWN BY: DPA

CHECKED BY: CHK

APPROVED BY: APR

COPYRIGHT:

SHEET TITLE

SUMMARY OF
QUANTITIES & INDEX
TO SHEETS

GI002
SHEET 2 OF 55

| Sheet List Table | | |
|------------------|-------------|---|
| Sheet No. | Sheet Index | Sheet Title |
| 1 | GI001 | COVER SHEET |
| 2 | GI002 | SUMMARY OF QUANTITIES & INDEX TO SHEETS |
| 3 | GI101 | AIRPORT SITE PLAN |
| 4 | GC001 | CONSTRUCTION ACTIVITY NOTES 1 |
| 5 | GC002 | CONSTRUCTION ACTIVITY NOTES 2 |
| 6 | GC003 | CONSTRUCTION ACTIVITY DETAILS 1 |
| 7 | GC101 | CONSTRUCTION ACTIVITY PLAN |
| 8 | CD000 | EXISTING CONDITIONS NOTES & LEGENDS |
| 9 | CD101 | EXIST. CONDITIONS & REMOVALS - AIRSIDE |
| 10 | CD102 | EXIST. CONDITIONS & REMOVALS - LANDSIDE |
| 11 | CP101 | PROP. PAVEMENT GEOMETRY - AIRSIDE |
| 12 | CP201 | TAXIWAY PLAN & PROFILE - AIRSIDE |
| 13 | CP202 | APRON PLAN & PROFILE - AIRSIDE |
| 14 | CP203 | ACCESS ROAD PLAN & PROFILE - LANDSIDE |
| 15 | CP301 | TYPICAL SECTIONS & DETAILS - AIRSIDE |
| 16 | CP302 | TYPICAL SECTIONS & DETAILS - LANDSIDE |
| 17 | CS101 | STAKING PLAN - AIRSIDE |
| 18 | CS102 | STAKING PLAN - LANDSIDE |
| 19 | CJ101 | JOINTING PLAN |
| 20 | CJ 501 | JOINTING DETAILS |
| 21 | CG101 | GRADING & DRAINAGE PLAN - AIRSIDE |
| 22 | CG102 | GRADING & DRAINAGE PLAN - LANDSIDE |
| 23 | CU101 | STORM SEWER PLAN - LANDSIDE |
| 24 | CU102 | DOMESTIC WATER UTILITY PLANS - LANDSIDE |
| 25 | CU103 | UNDERDRAIN PLAN - AIRSIDE |
| 26 | CU201 | UNDERDRAIN PROFILES |
| 27 | CU501 | STORM AND SANITARY SEWER DETAILS - LANDSIDE |
| 28 | CU502 | DOMESTIC WATER DETAILS - LANDSIDE |
| 29 | CU503 | UNDERDRAIN DETAILS 1 |
| 30 | CU504 | UNDERDRAIN DETAILS 2 |
| 31 | EL101 | ELECTRICAL PLAN |
| 32 | EL501 | ELECTRICAL DETAILS 1 |
| 33 | EL502 | ELECTRICAL DETAILS 2 |
| 34 | EL503 | ELECTRICAL DETAILS 3 |
| 35 | CM101 | MARKING PLAN - AIRSIDE |
| 36 | CM102 | MARKING PLAN - LANDSIDE |
| 37 | CF101 | FENCING PLAN |
| 38 | CF501 | FENCING DETAILS 1 |
| 39 | CF502 | FENCING DETAILS 2 |
| 40 | LG101 | TURFING & EROSION CONTROL - AIRSIDE |
| 41 | LG102 | TURFING & EROSION CONTROL - LANDSIDE |
| 42 | LG501 | EROSION CONTROL DETAILS |
| 43 | LG502 | EROSION CONTROL DETAILS - LANDSIDE |
| 44 | CG600 | CROSS SECTION INDEX - AIRSIDE |
| 45 | CG601 | APRON CROSS SECTIONS 1 |
| 46 | CG602 | APRON CROSS SECTIONS 2 |
| 47 | CG603 | APRON CROSS SECTIONS 3 |
| 48 | CG604 | TAXIWAY CROSS SECTIONS |
| 49 | CG800 | CROSS SECTIONS INDEX - LANDSIDE |
| 50 | CG801 | CROSS SECTIONS - ACCESS ROAD 1 |
| 51 | CG802 | CROSS SECTIONS - ACCESS ROAD 2 |
| 52 | CG803 | CROSS SECTIONS - ACCESS ROAD 3 |
| 53 | CG804 | CROSS SECTIONS - PARKING 1 |
| 54 | CG805 | CROSS SECTIONS - PARKING 2 |
| 55 | CG806 | CROSS SECTIONS - PARKING 3 |

| SUMMARY OF QUANTITIES - BASE BID | | | |
|----------------------------------|-----------------------------------|--------|---------|
| ITEM NO. | ITEM DESCRIPTION | UNITS | QTY |
| AR 108108 | 1/C #8 5 KV UG CABLE | FOOT | 65.0 |
| AR 108158 | 1/C #8 5 KV UG CABLE IN UD | FOOT | 470.0 |
| AR 108706 | 1/C #6 COUNTERPOISE | FOOT | 535.0 |
| AR 110102 | DUCT MARKER - IN PAVEMENT | EACH | 2.0 |
| AR 110504 | 4-WAY CONCRETE ENCASED DUCT | FOOT | 60.0 |
| AR 125415 | MITL - BASE MOUNTED | EACH | 15.0 |
| AR 125902 | REMOVE BASE MOUNTED LIGHT | EACH | 2.0 |
| AR 150510 | ENGINEER'S FIELD OFFICE | L SUM | 1.0 |
| AR 150520 | MOBILIZATION | L SUM | 1.0 |
| AR 150550 | CONSTRUCTION ACCESS | L SUM | 1.0 |
| AR 152410 | UNCLASSIFIED EXCAVATION | CU YD | 19250.0 |
| AR 152511 | SUBGRADE REPAIR | SQ YD | 235.0 |
| AR 156510 | SILT FENCE INSTALLATION & REMOVAL | FOOT | 1850.0 |
| AR 156511 | DITCH CHECK | FOOT | 810.0 |
| AR 156513 | SEPARATION FABRIC | SQ YD | 3915.0 |
| AR 156520 | INLET PROTECTION | EACH | 6.0 |
| AR 156530 | TEMPORARY SEEDING | ACRE | 4.0 |
| AR 161601 | TEMPORARY GATE | EACH | 1.0 |
| AR 162510 | CLASS E FENCE 10' | FOOT | 1145.0 |
| AR 162618 | CLASS E GATE-18' | EACH | 1.0 |
| AR 162900 | REMOVE CLASS E FENCE | FOOT | 650.0 |
| AR 208609 | 9" AGGREGATE BASE COURSE | SQ YD | 3611.0 |
| AR 209606 | CRUSHED AGG. BASE COURSE - 6" | SQ YD | 5220.0 |
| AR 401610 | BITUMINOUS SURFACE COURSE | TON | 315.0 |
| AR 403610 | BITUMINOUS BASE COURSE | TON | 450.0 |
| AR 501506 | 6" PCC PAVEMENT | SQ YD | 5070.0 |
| AR 501530 | PCC TEST BATCH | L SUM | 1.0 |
| AR 602510 | BITUMINOUS PRIME COAT | GALLON | 970.0 |
| AR 603510 | BITUMINOUS TACK COAT | GALLON | 95.0 |
| AR 620510 | PAVEMENT MARKING | SQ FT | 300.0 |
| AR 620520 | PAVEMENT MARKING - WATERBORNE | SQ FT | 365.0 |
| AR 620525 | PAVEMENT MARKING - BLACK BORDER | SQ FT | 365.0 |
| AR 701212 | 12" CMP | FOOT | 50.0 |
| AR 701518 | 18" RCP, CLASS IV | FOOT | 55.0 |
| AR 701524 | 24" RCP, CLASS IV | FOOT | 540.0 |
| AR 705524 | 4" PERFORATED UNDERDRAIN W/SOCK | FOOT | 1245.0 |
| AR 705544 | 4" NON PERFORATED UNDERDRAIN | FOOT | 240.0 |
| AR 705635 | UNDERDRAIN COLLECTION STRUCTURE | EACH | 2.0 |
| AR 705640 | UNDERDRAIN CLEANOUT | EACH | 7.0 |
| AR 705645 | UNDERDRAIN CONNECTION | EACH | 2.0 |
| AR 751410 | INLET | EACH | 3.0 |
| AR 751550 | MANHOLE - 5' | EACH | 1.0 |
| AR 751560 | MANHOLE - 6' | EACH | 1.0 |
| AR 752418 | PRECAST REINFORCED CONC. FES 18" | EACH | 1.0 |
| AR 752424 | PRECAST REINFORCED CONC. FES 24" | EACH | 1.0 |
| AR 760608 | 8" PVC WATER MAIN | FOOT | 700.0 |
| AR 760800 | FIRE HYDRANT | EACH | 2.0 |
| AR 760830 | WATER VALVE | EACH | 2.0 |
| AR 760838 | WATER VALVE - 8" | EACH | 2.0 |
| AR 760861 | 8"X8" TAPPING VALVE AND SLEEVE | EACH | 1.0 |
| AR 770506 | 6" SANITARY SEWER | FOOT | 125.0 |
| AR 770701 | SANITARY SEWER CONNECTION | L SUM | 1.0 |
| AR 901510 | SEEDING | ACRE | 9.5 |
| AR 904510 | SODDING | SQ YD | 450.0 |
| AR 908510 | MULCHING | ACRE | 6.0 |
| AR 908515 | HEAVY-DUTY HYDRAULIC MULCH | ACRE | 3.5 |
| AR 910230 | HANDICAP SIGN | EACH | 1.0 |

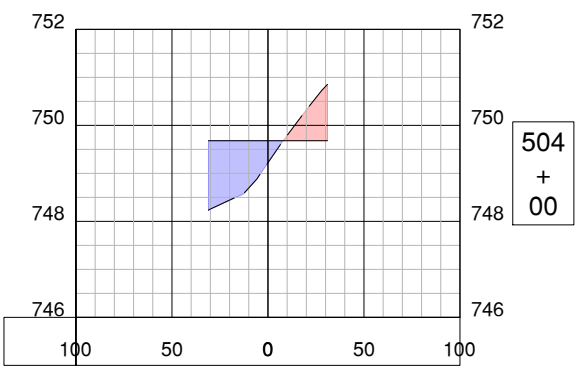
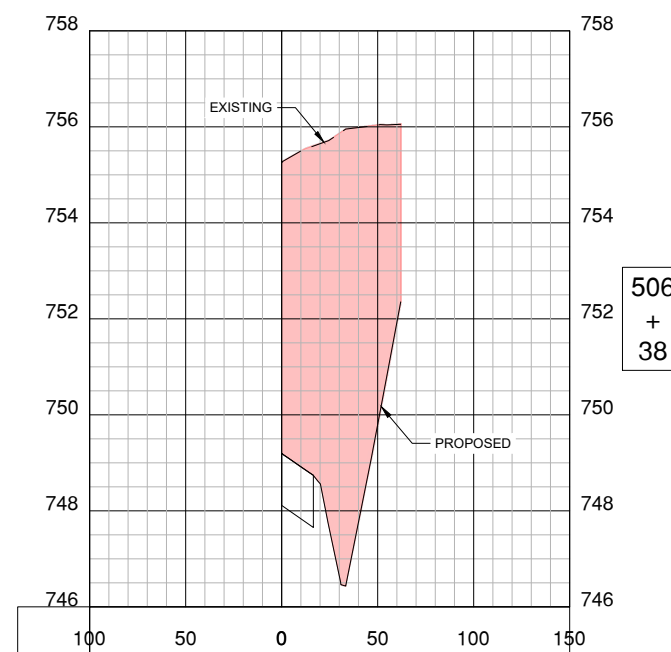
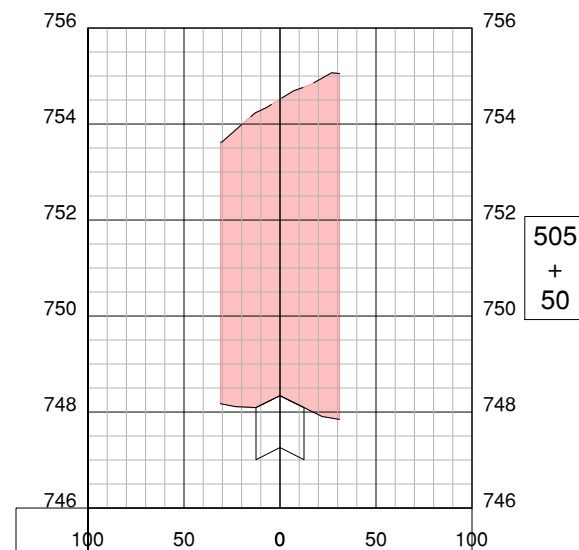
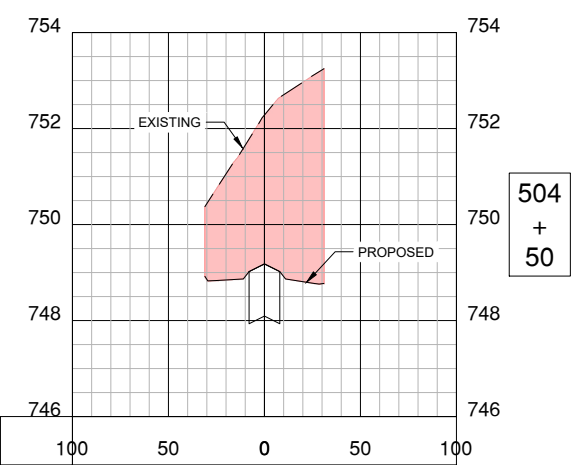
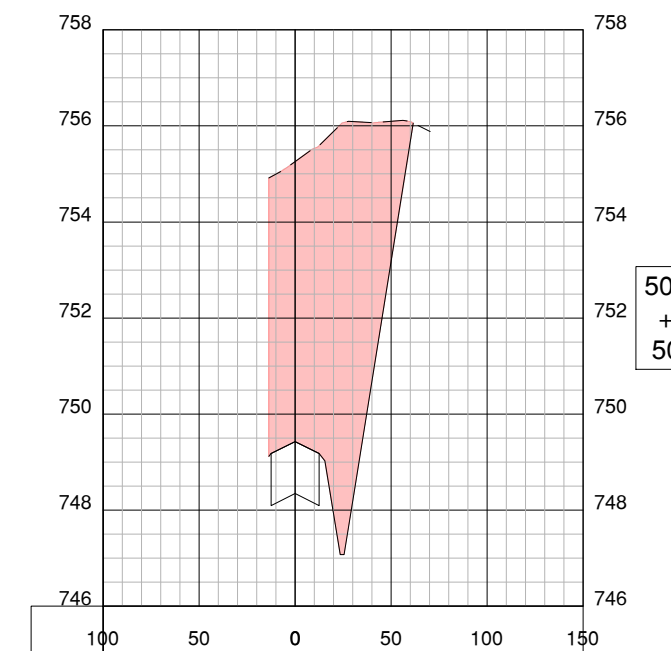
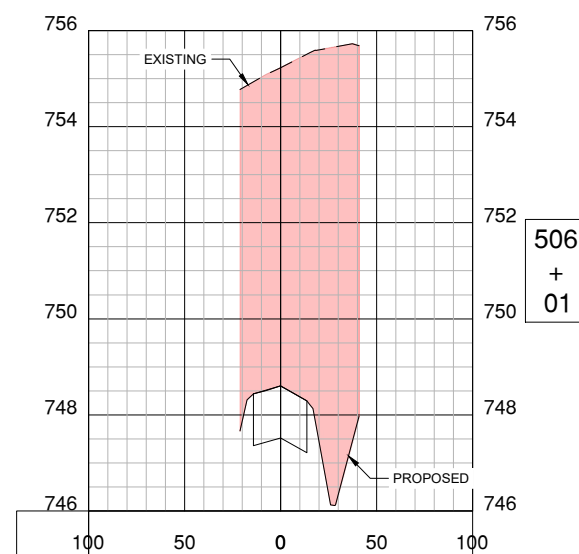
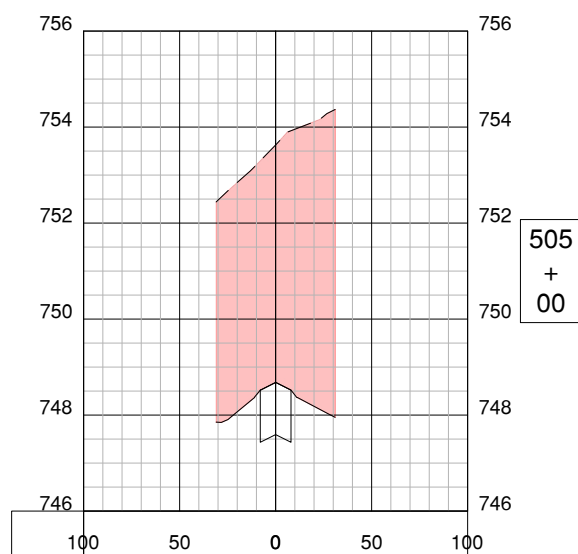
| SUMMARY OF QUANTITIES - BASE BID | | | |
|----------------------------------|-----------------------------------|--------|---------|
| ITEM NO. | ITEM DESCRIPTION | UNITS | QTY |
| AR 108108 | 1/C #8 5 KV UG CABLE | FOOT | 65.0 |
| AR 108158 | 1/C #8 5 KV UG CABLE IN UD | FOOT | 470.0 |
| AR 108706 | 1/C #6 COUNTERPOISE | FOOT | 535.0 |
| AR 110102 | DUCT MARKER - IN PAVEMENT | EACH | 2.0 |
| AR 110504 | 4-WAY CONCRETE ENCASED DUCT | FOOT | 60.0 |
| AR 125415 | MITL - BASE MOUNTED | EACH | 15.0 |
| AR 125902 | REMOVE BASE MOUNTED LIGHT | EACH | 2.0 |
| AR 150510 | ENGINEER'S FIELD OFFICE | L SUM | 1.0 |
| AR 150520 | MOBILIZATION | L SUM | 1.0 |
| AR 150550 | CONSTRUCTION ACCESS | L SUM | 1.0 |
| AR 152410 | UNCLASSIFIED EXCAVATION | CU YD | 27600.0 |
| AR 152511 | SUBGRADE REPAIR | SQ YD | 235.0 |
| AR 156510 | SILT FENCE INSTALLATION & REMOVAL | FOOT | 1850.0 |
| AR 156511 | DITCH CHECK | FOOT | 810.0 |
| AR 156513 | SEPARATION FABRIC | SQ YD | 3915.0 |
| AR 156520 | INLET PROTECTION | EACH | 6.0 |
| AR 156530 | TEMPORARY SEEDING | ACRE | 4.0 |
| AR 161601 | TEMPORARY GATE | EACH | 1.0 |
| AR 162510 | CLASS E FENCE 10' | FOOT | 1145.0 |
| AR 162618 | CLASS E GATE-18' | EACH | 1.0 |
| AR 162900 | REMOVE CLASS E FENCE | FOOT | 650.0 |
| AR 208609 | 9" AGGREGATE BASE COURSE | SQ YD | 3611.0 |
| AR 209606 | CRUSHED AGG. BASE COURSE - 6" | SQ YD | 5220.0 |
| AR 401610 | BITUMINOUS SURFACE COURSE | TON | 315.0 |
| AR 403610 | BITUMINOUS BASE COURSE | TON | 450.0 |
| AR 501506 | 6" PCC PAVEMENT | SQ YD | 5070.0 |
| AR 501530 | PCC TEST BATCH | L SUM | 1.0 |
| AR 602510 | BITUMINOUS PRIME COAT | GALLON | 970.0 |
| AR 603510 | BITUMINOUS TACK COAT | GALLON | 95.0 |
| AR 620510 | PAVEMENT MARKING | SQ FT | 300.0 |
| AR 620520 | PAVEMENT MARKING - WATERBORNE | SQ FT | 365.0 |
| AR 620525 | PAVEMENT MARKING - BLACK BORDER | SQ FT | 365.0 |
| AR 701212 | 12" CMP | FOOT | 50.0 |
| AR 701518 | 18" RCP, CLASS IV | FOOT | 55.0 |
| AR 701524 | 24" RCP, CLASS IV | FOOT | 540.0 |
| AR 705524 | 4" PERFORATED UNDERDRAIN W/SOCK | FOOT | 1245.0 |
| AR 705544 | 4" NON PERFORATED UNDERDRAIN | FOOT | 240.0 |
| AR 705635 | UNDERDRAIN COLLECTION STRUCTURE | EACH | 2.0 |
| AR 705640 | UNDERDRAIN CLEANOUT | EACH | 7.0 |
| AR 705645 | UNDERDRAIN CONNECTION | EACH | 2.0 |
| AR 751410 | INLET | EACH | 3.0 |
| AR 751550 | MANHOLE - 5' | EACH | 1.0 |
| AR 751560 | MANHOLE - 6' | EACH | 1.0 |
| AR 752418 | PRECAST REINFORCED CONC. FES 18" | EACH | 1.0 |
| AR 752424 | PRECAST REINFORCED CONC. FES 24" | EACH | 1.0 |
| AR 760608 | 8" PVC WATER MAIN | FOOT | 700.0 |
| AR 760800 | FIRE HYDRANT | EACH | 2.0 |
| AR 760830 | WATER VALVE | EACH | 2.0 |
| AR 760838 | WATER VALVE - 8" | EACH | 2.0 |
| AR 760861 | 8"X8" TAPPING VALVE AND SLEEVE | EACH | 1.0 |
| AR 770506 | 6" SANITARY SEWER | FOOT | 125.0 |
| AR 770701 | SANITARY SEWER CONNECTION | L SUM | 1.0 |
| AR 901510 | SEEDING | ACRE | 9.5 |
| AR 904510 | SODDING | SQ YD | 450.0 |
| AR 908510 | MULCHING | ACRE | 6.0 |
| AR 908515 | HEAVY-DUTY HYDRAULIC MULCH | ACRE | 3.5 |
| AR 910230 | HANDICAP SIGN | EACH | 1.0 |

| SUMMARY OF QUANTITIES - ALTERNATE 1 | | | |
|-------------------------------------|---------------------------------|-------|--------|
| ITEM NO. | ITEM DESCRIPTION | UNITS | QTY |
| AS 209606 | CRUSHED AGG. BASE COURSE - 6" | SQ YD | 1480.0 |
| AS 501506 | 6" PCC PAVEMENT | SQ YD | 1430.0 |
| AS 705524 | 4" PERFORATED UNDERDRAIN W/SOCK | FOOT | 100.0 |
| AS 904510 | SODDING | SQ YD | 45.0 |

| MARK | DATE | DESCRIPTION |
|------|--------|-------------|
| A | 6/3/22 | ADDENDUM A |

| | |
|-----------------|-----------------|
| AIP PROJ. NO: | N/A |
| IL PROJ. NO: | UIN-5025 |
| CMT PROJECT NO: | 19002002 |
| CAD DWG FILE: | PLAN SHEETS.DWG |
| DESIGNED BY: | CSW |
| DRAWN BY: | CSW |
| CHECKED BY: | EBB |
| APPROVED BY: | |
| COPYRIGHT: | |

SHEET TITLE
**CROSS SECTIONS -
 ACCESS ROAD**





License No. 184-000613
CONSULTANTS

THIS BAR IS EQUAL TO 2" AT FULL SCALE (34X22).

SUB-CONSULTANTS



FINAL SUBMITTAL
APRIL, 22, 2022

CONSTRUCT AIRPORT
GENERAL AVIATION APRON &
ROADWAY

OWNER



CITY OF QUINCY
QUINCY REGIONAL AIRPORT
QUINCY, IL

| MARK | DATE | DESCRIPTION |
|------|--------|-------------|
| A | 6/3/22 | ADDENDUM A |

AIP PROJ. NO: N/A

IL PROJ. NO: UIN-5025

CMT PROJECT NO: 19002002

CAD DWG FILE: PLAN SHEETS.DWG

DESIGNED BY: CSW

DRAWN BY: CSW

CHECKED BY: EBB

APPROVED BY:

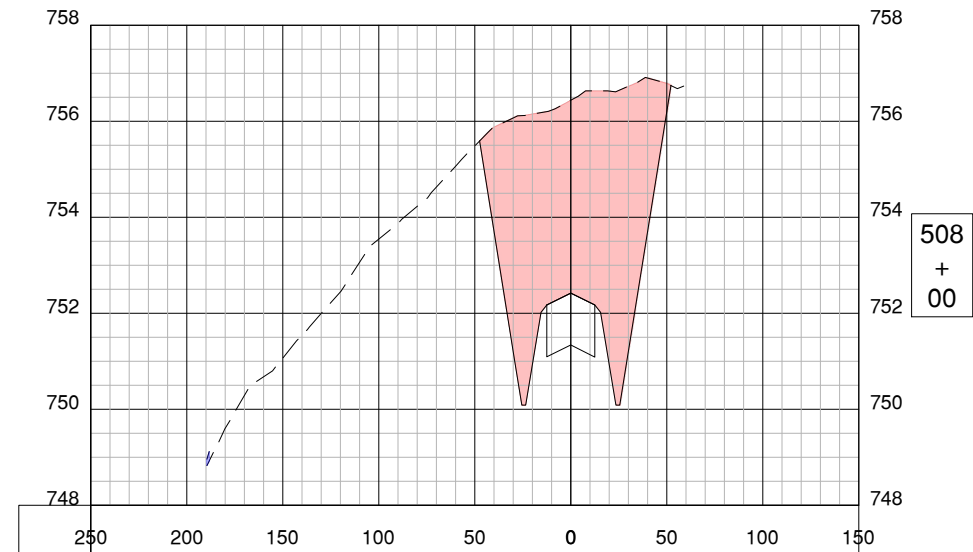
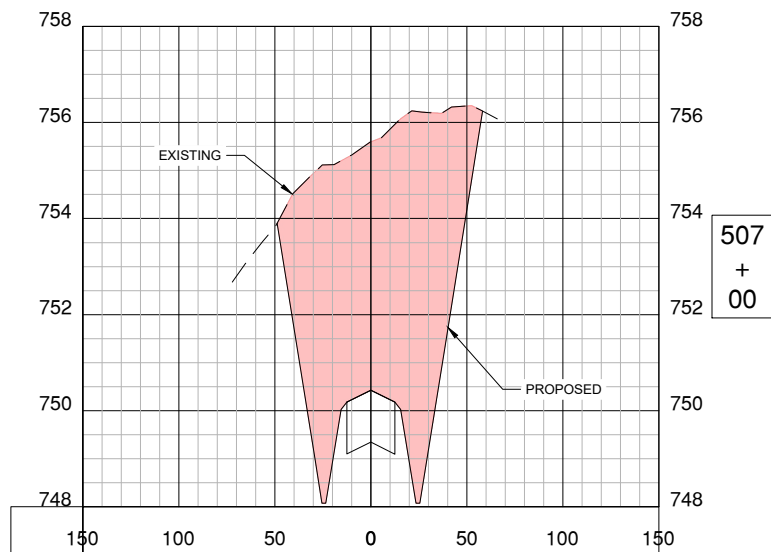
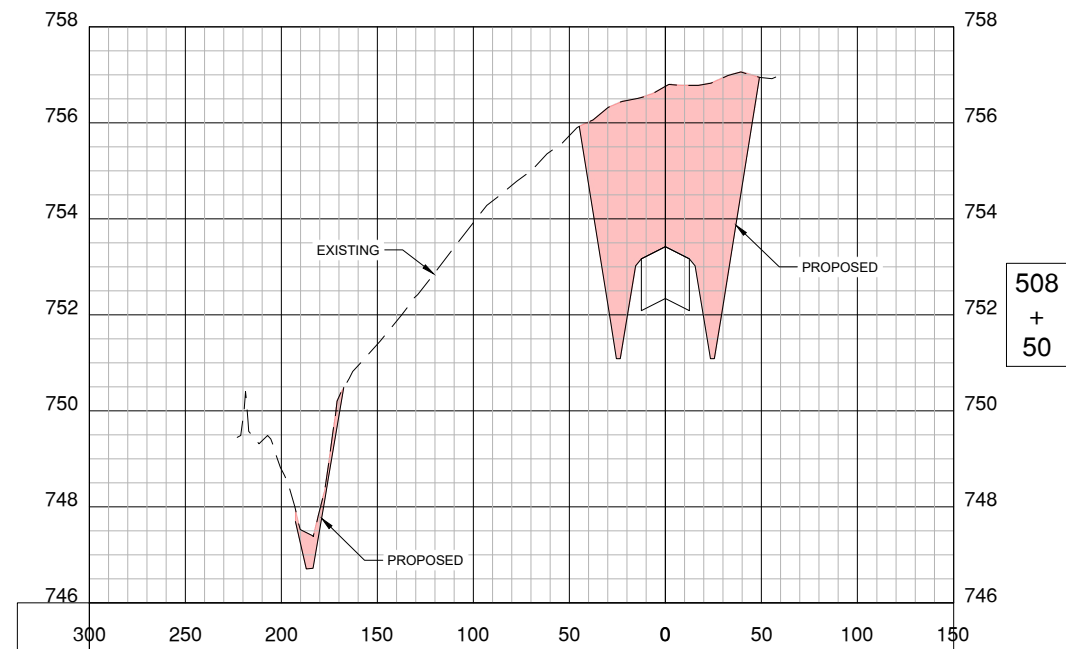
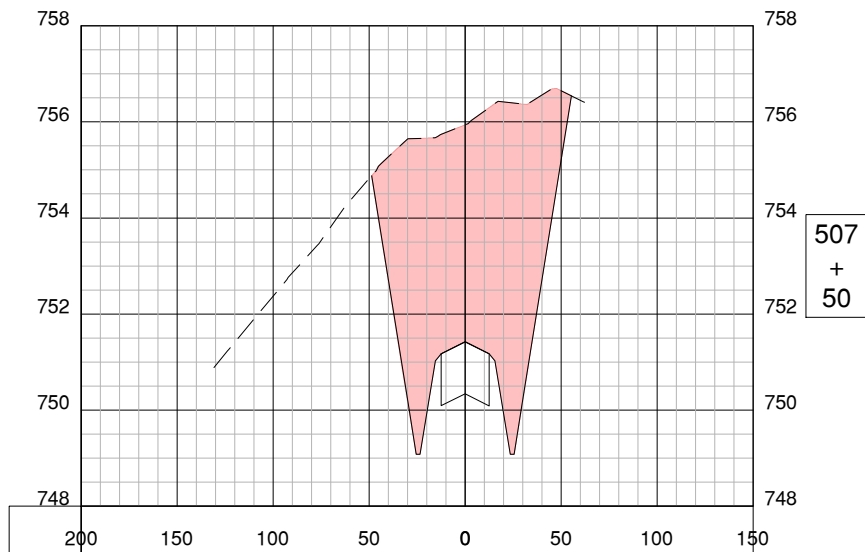
COPYRIGHT:

SHEET TITLE

CROSS SECTIONS -
ACCESS ROAD

CG802

SHEET 51 OF 55





License No. 184-000613

CONSULTANTS

THIS BAR IS EQUAL TO 2" AT FULL SCALE (34X22).

SUB-CONSULTANTS



FINAL SUBMITTAL
APRIL, 22, 2022

CONSTRUCT AIRPORT
GENERAL AVIATION APRON &
ROADWAY

OWNER



CITY OF QUINCY
QUINCY REGIONAL AIRPORT
QUINCY, IL

| MARK | DATE | DESCRIPTION |
|------|--------|-------------|
| A | 6/3/22 | ADDENDUM A |

AIP PROJ. NO: N/A

IL PROJ. NO: UIN-5025

CMT PROJECT NO: 19002002

CAD DWG FILE: PLAN SHEETS.DWG

DESIGNED BY: CSW

DRAWN BY: CSW

CHECKED BY: EBB

APPROVED BY:

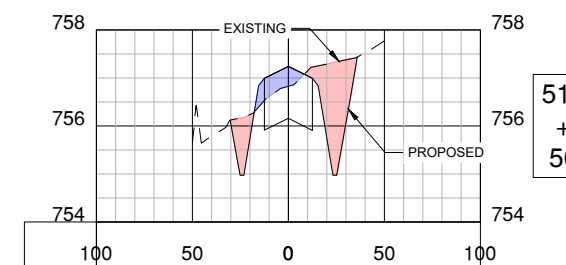
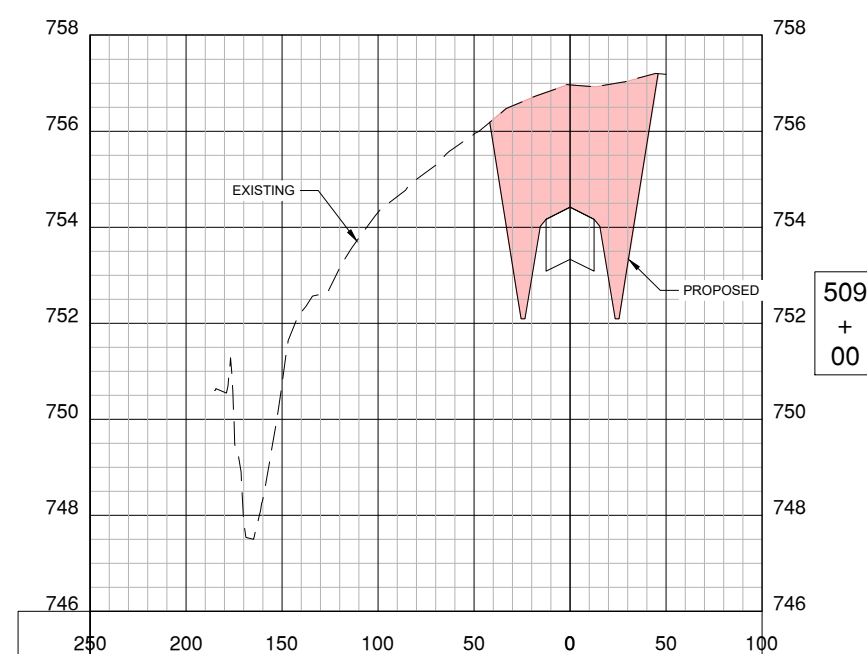
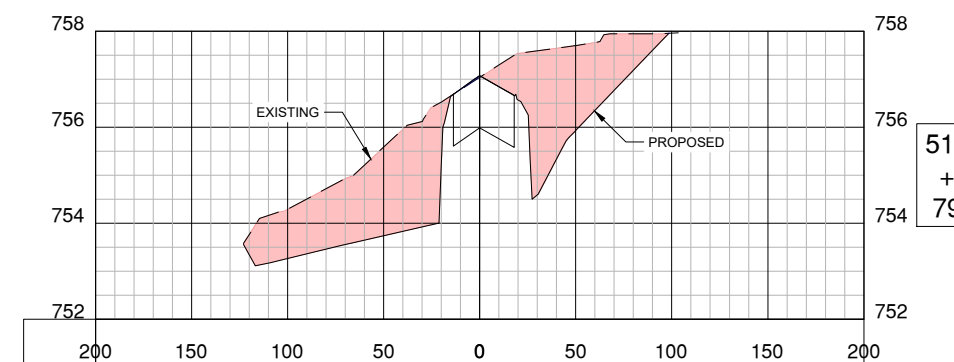
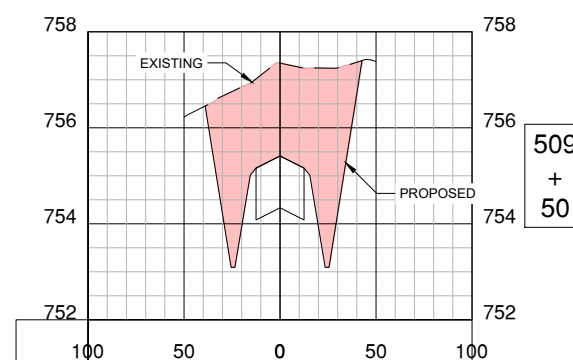
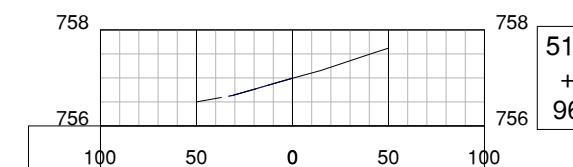
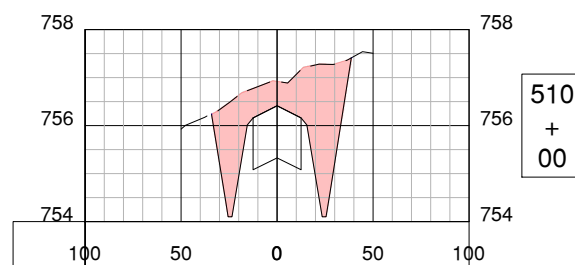
COPYRIGHT:

SHEET TITLE

CROSS SECTIONS -
ACCESS ROAD

CG803
SHEET 52 OF 55

| CONTROL STATION | CUT AREA | VOLUME CUT | VOLUME CUT | CUM. VOL. CUT | FILL AREA | VOLUME FILL(15% SHRINK) | CUM. VOL. FILL |
|-----------------|----------|------------|------------|---------------|-----------|-------------------------|----------------|
| | (sq ft) | (cu ft) | (cu yd) | (cu yd) | (sq ft) | (cu yd) | (cu yd) |
| 504+00 | 20 | | | | 30 | | |
| 504+50 | 212 | 5800.0 | 215 | 215 | 0 | 32 | 32 |
| 505+00 | 342 | 13850.0 | 513 | 728 | 0 | 0 | 32 |
| 505+50 | 455 | 19925.0 | 738 | 1466 | 0 | 0 | 32 |
| 506+00 | 493 | 23700.0 | 878 | 2344 | 0 | 0 | 32 |
| 506+38 | 451 | 17936.0 | 664 | 3008 | 0 | 0 | 32 |
| 506+50 | 443 | 15645.0 | 579 | 3587 | 0 | 0 | 32 |
| 507+00 | 545 | 24700.0 | 915 | 4502 | 0 | 0 | 32 |
| 507+50 | 485 | 25750.0 | 954 | 5456 | 0 | 0 | 32 |
| 508+00 | 424 | 22725.0 | 842 | 6297 | 0 | 0 | 32 |
| 508+50 | 358 | 19550.0 | 724 | 7022 | 0 | 0 | 32 |
| 509+00 | 275 | 15825.0 | 586 | 7608 | 0 | 0 | 32 |
| 509+50 | 210 | 12125.0 | 449 | 8057 | 0 | 0 | 32 |
| 510+00 | 118 | 8200.0 | 304 | 8360 | 0 | 0 | 32 |
| 510+50 | 56 | 4350.0 | 161 | 8522 | 2.5 | 3 | 35 |
| 510+79 | 306 | 5249.0 | 194 | 8716 | 0 | 2 | 36 |
| 510+96 | 0 | 2601.0 | 96 | 8812 | 0 | 0 | 36 |



FINAL SUBMITTAL
 APRIL, 22, 2022

CONSTRUCT AIRPORT
 GENERAL AVIATION APRON &
 ROADWAY

OWNER



CITY OF QUINCY
 QUINCY REGIONAL AIRPORT
 QUINCY, IL

| MARK | DATE | DESCRIPTION |
|------|--------|-------------|
| A | 6/3/22 | ADDENDUM A |

AIP PROJ. NO: N/A

IL PROJ. NO: UIN-5025

CMT PROJECT NO: 19002002

CAD DWG FILE: PLAN SHEETS.DWG

DESIGNED BY: CSW

DRAWN BY: CSW

CHECKED BY: EBB

APPROVED BY:

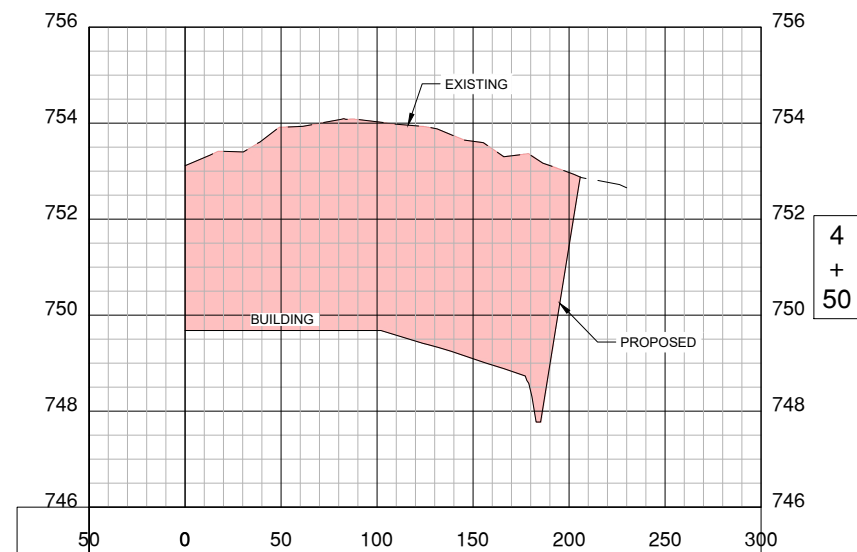
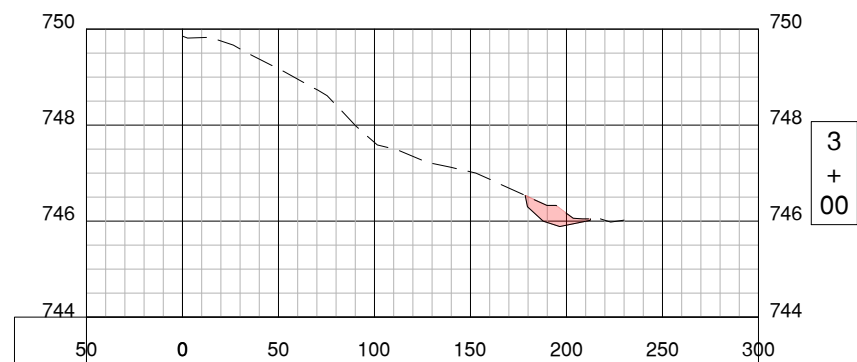
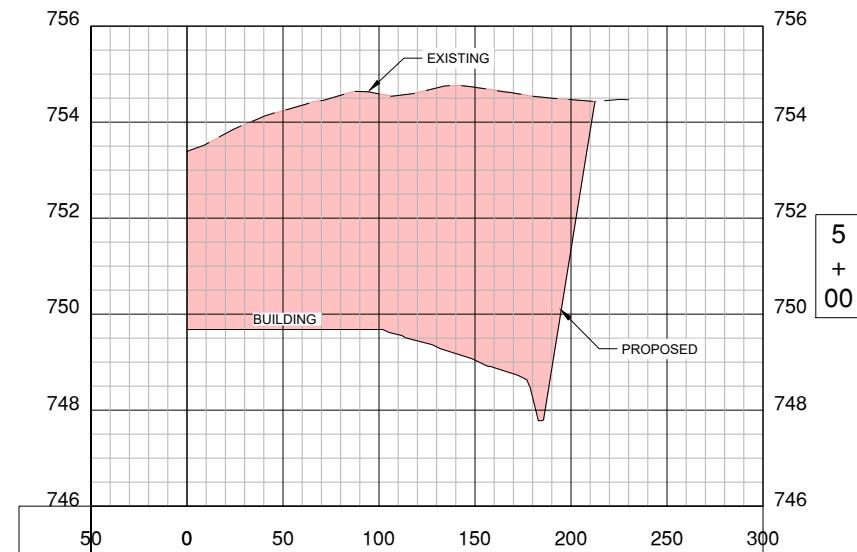
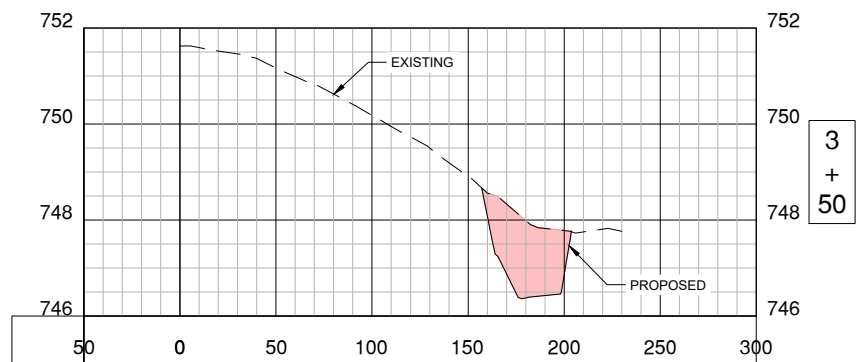
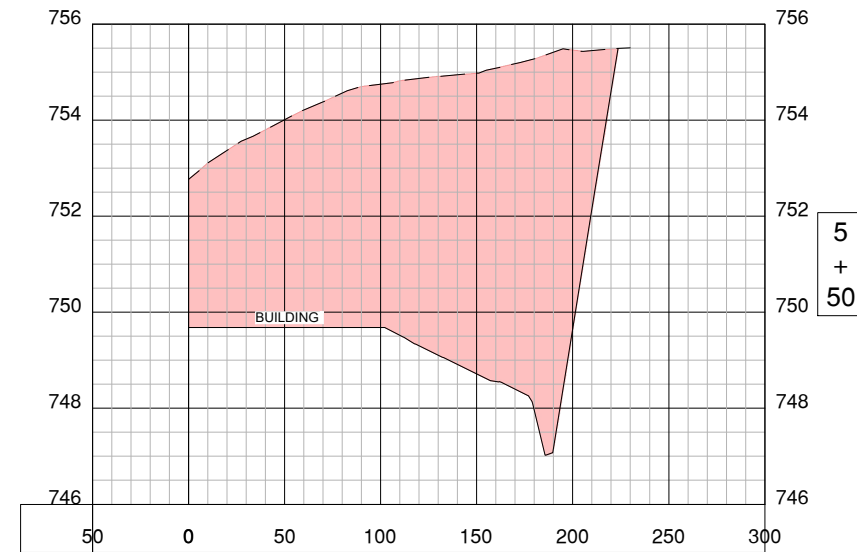
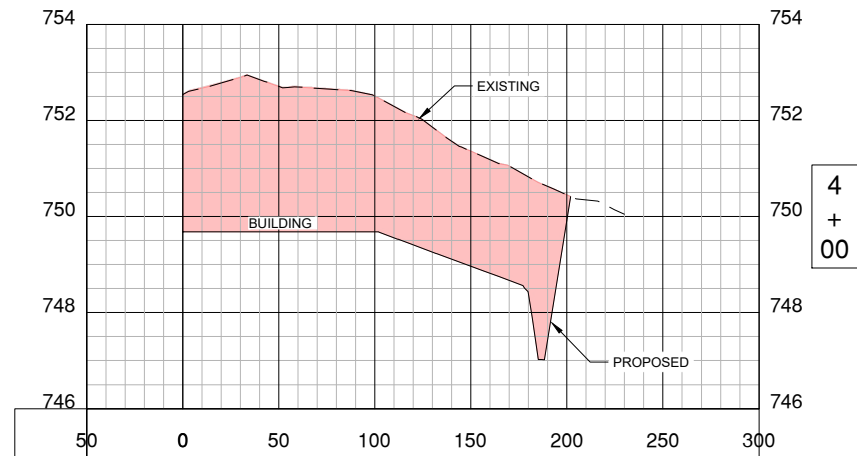
COPYRIGHT:

SHEET TITLE

CROSS SECTIONS -
 PARKING

CG804

SHEET 53 OF 55





License No. 184-000613

CONSULTANTS

THIS BAR IS EQUAL TO 2" AT FULL SCALE (34X22)

SUB-CONSULTANTS



FINAL SUBMITTAL
APRIL, 22, 2022

CONSTRUCT AIRPORT
GENERAL AVIATION APRON &
ROADWAY

OWNER



CITY OF QUINCY
QUINCY REGIONAL AIRPORT
QUINCY, IL

| MARK | DATE | DESCRIPTION |
|------|--------|-------------|
| A | 6/3/22 | ADDENDUM A |

AIP PROJ. NO: N/A

IL PROJ. NO: UIN-5025

CMT PROJECT NO: 19002002

CAD DWG FILE: PLAN SHEETS.DWG

DESIGNED BY: CSW

DRAWN BY: CSW

CHECKED BY: EBB

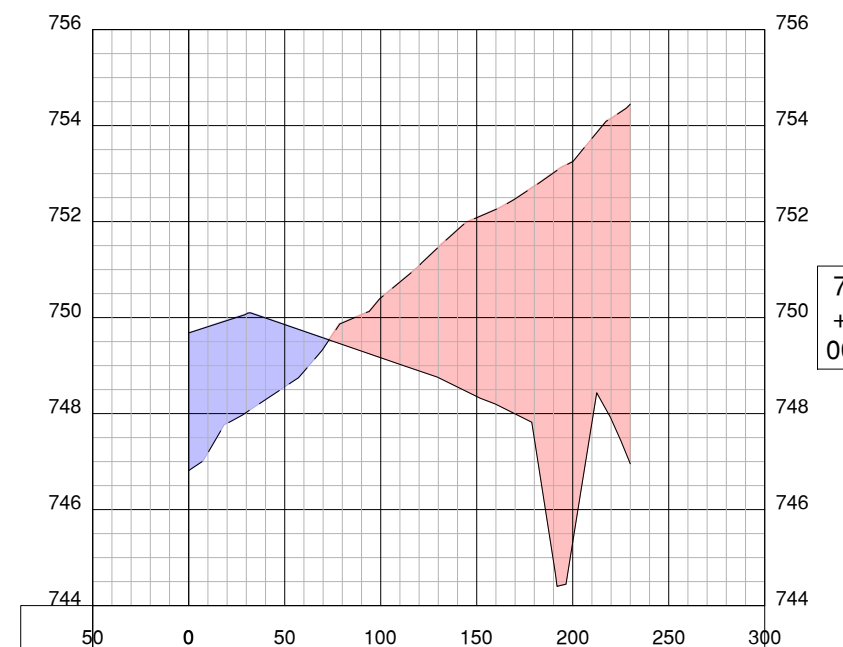
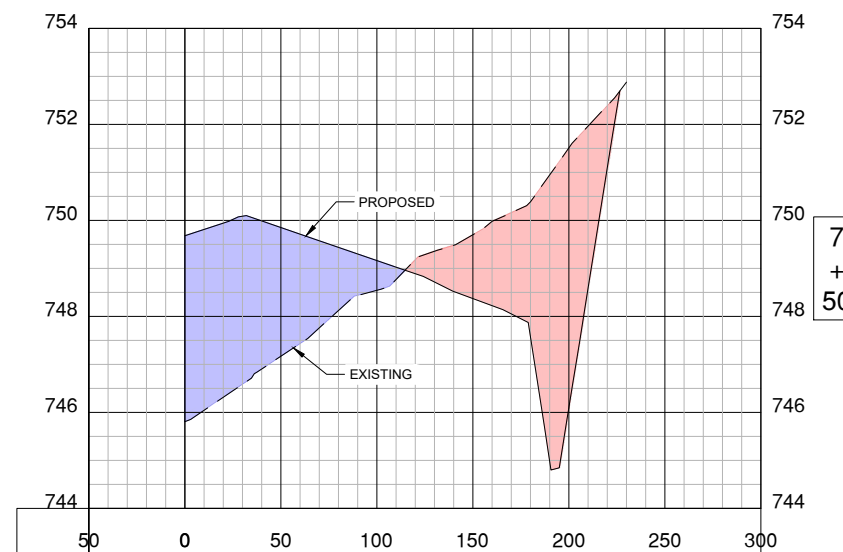
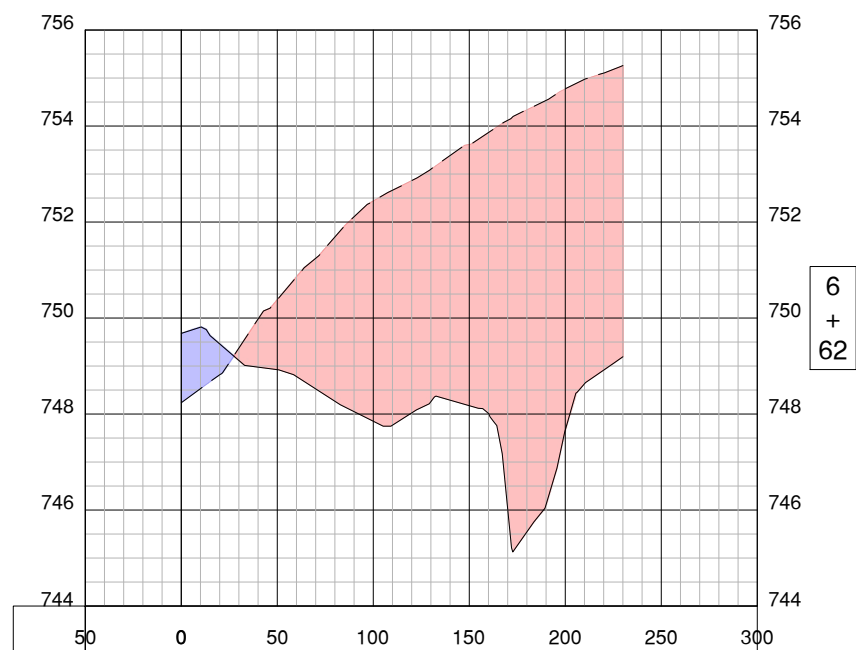
APPROVED BY:

COPYRIGHT:

SHEET TITLE

CROSS SECTIONS -
PARKING

CG805
SHEET 54 OF 55



| MARK | DATE | DESCRIPTION |
|------|--------|-------------|
| A | 6/3/22 | ADDENDUM A |

| | |
|-----------------|-----------------|
| AIP PROJ. NO: | N/A |
| IL PROJ. NO: | UIN-5025 |
| CMT PROJECT NO: | 19002002 |
| CAD DWG FILE: | PLAN SHEETS.DWG |
| DESIGNED BY: | CSW |
| DRAWN BY: | CSW |
| CHECKED BY: | EBB |
| APPROVED BY: | |
| COPYRIGHT: | |

SHEET TITLE
**CROSS SECTIONS -
 PARKING**

| CONTROL STATION | PARKING SECTIONS | | | | | | |
|-----------------|--------------------|--------------------|--------------------|-----------------------|---------------------|----------------------------------|------------------------|
| | ACTUAL CUT (sq ft) | VOLUME CUT (cu ft) | VOLUME CUT (cu yd) | CUM. VOL. CUT (cu yd) | ACTUAL FILL (sq ft) | VOLUME FILL (15% SHRINK) (cu yd) | CUM. VOL. FILL (cu yd) |
| 3+00 | 8 | | | | 0 | | |
| 3+50 | 58 | 1650.0 | 61 | 61 | 0 | 0 | 0 |
| 4+00 | 735 | 19825.0 | 734 | 795 | 0 | 0 | 0 |
| 4+50 | 1026 | 44025.0 | 1631 | 2426 | 0 | 0 | 0 |
| 5+00 | 1193 | 55475.0 | 2055 | 4481 | 0 | 0 | 0 |
| 5+50 | 1308 | 62525.0 | 2316 | 6796 | 0 | 0 | 0 |
| 6+00 | 1396 | 67600.0 | 2504 | 9300 | 0 | 0 | 0 |
| 6+62 | 984 | | 0 | 9300 | 26 | 0 | 0 |
| 7+00 | 618 | 30438.0 | 1127 | 10427 | 123 | 121 | 121 |
| 7+50 | 259 | 21925.0 | 812 | 11239 | 257 | 405 | 525 |
| 8+00 | 129 | 9700.0 | 359 | 11599 | 408 | 708 | 1233 |
| 8+50 | 62 | 4775.0 | 177 | 11775 | 448 | 911 | 2145 |
| 9+00 | 53 | 2875.0 | 106 | 11882 | 297 | 793 | 2938 |
| 9+50 | 0 | 1325.0 | 49 | 11931 | 49 | 368 | 3307 |

