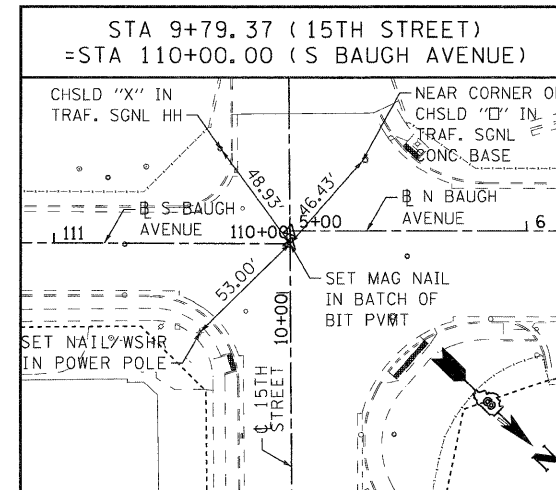
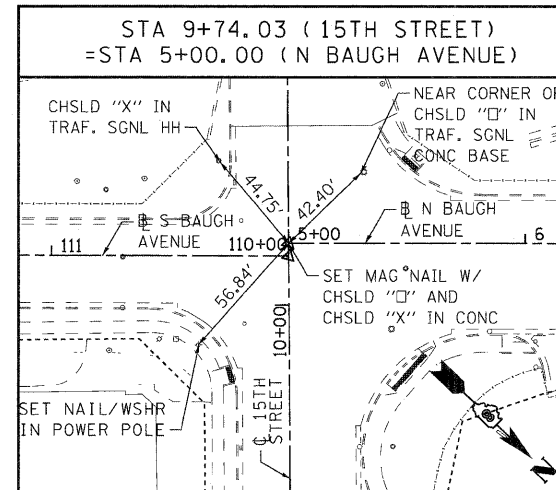
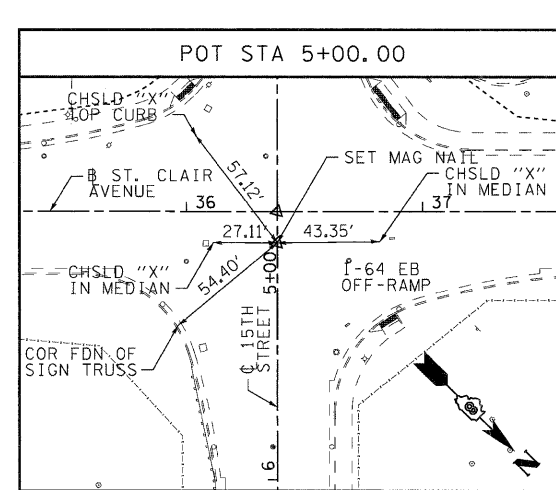
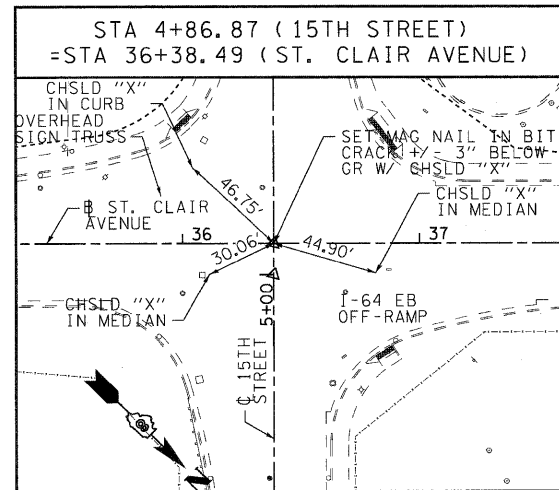
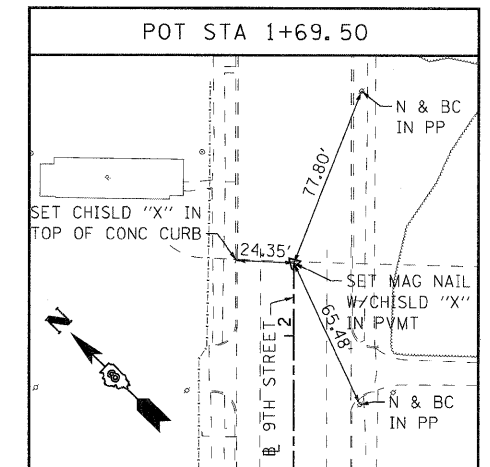


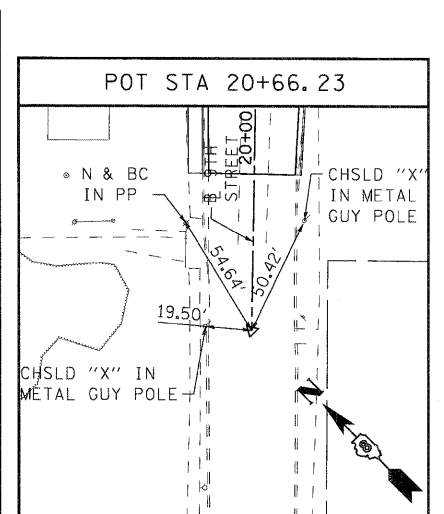
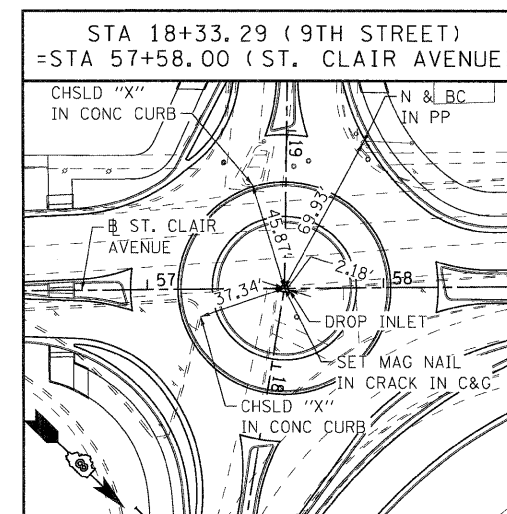
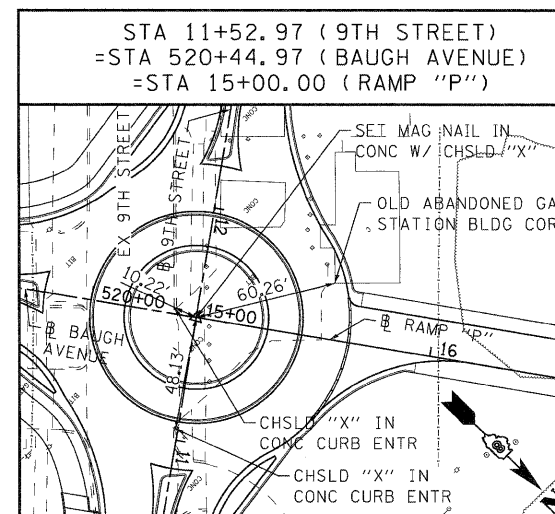
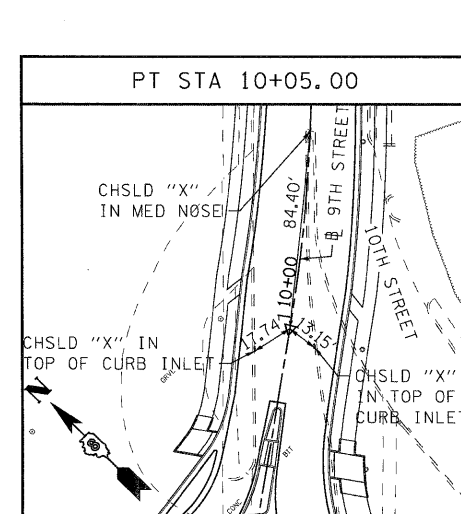
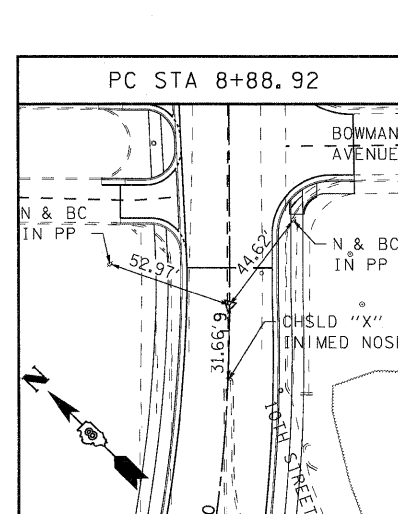
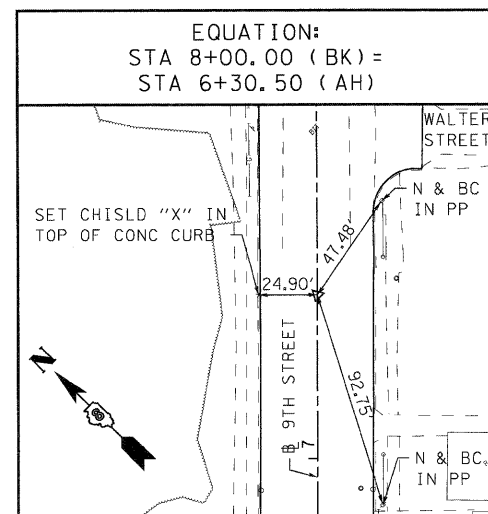
15TH STREET CENTERLINE



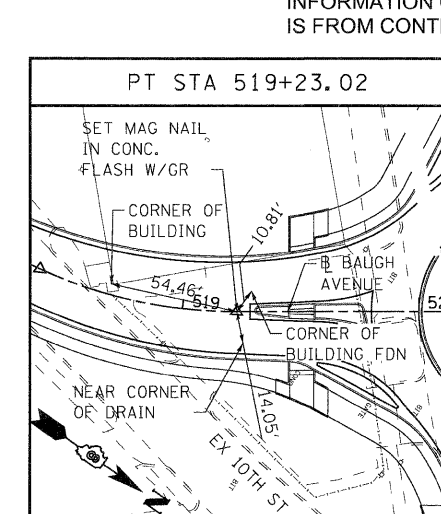
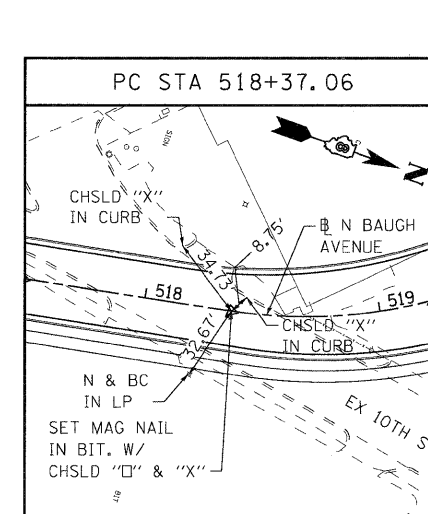
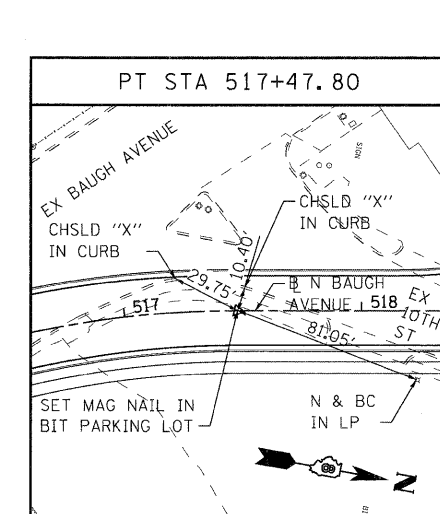
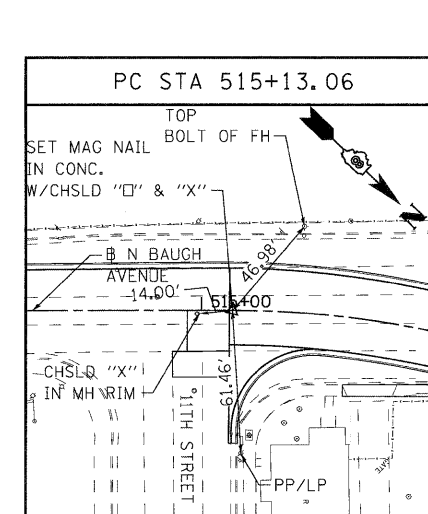
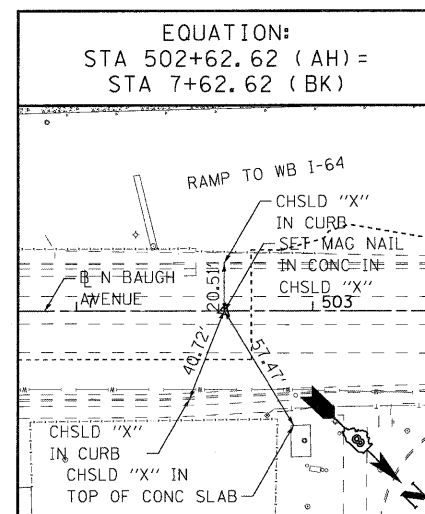
9TH STREET BASELINE



9TH STREET BASELINE

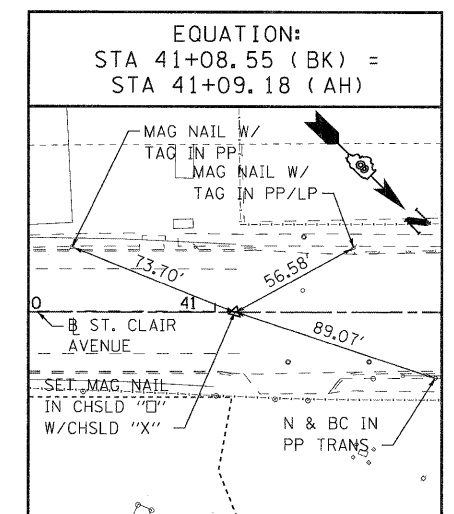


BAUGH AVENUE BASELINE



NOTE: INFORMATION ON THIS SHEET IS FROM CONTRACT 76C51.

ST. CLAIR AVENUE BASELINE



6/8/2011 10:03:30 AM

FILE NAME = DBTRI-76C51-sht-aligntblm-01-04.dgn
 USER NAME = jlt
 MODEL NAME = DBTRI-76C51-sht-aligntblm-03
 PLOT SCALE = 1:40
 PLOT DATE = 6/8/2011

DESIGNED - LDC
 DRAWN - JDF
 CHECKED - GEB
 DATE - 03/31/11

REVISED -
 REVISED -
 REVISED -
 REVISED -

STATE OF ILLINOIS
 DEPARTMENT OF TRANSPORTATION

ALIGNMENT, TIES, AND BENCHMARKS

SCALE: NONE SHEET NO. 3 OF 4 SHEETS STA. ----- TO STA. -----

F.A.U. RTE.	SECTION	COUNTY	TOTAL SHEETS	SHEET NO.
9214	82-1-12LS	ST. CLAIR	29	7
FED. ROAD DIST. NO.			ILLINOIS FED. AID PROJECT	
CONTRACT NO. 76F35				